



BROOKHAVEN BULLETIN

Published by the Brookhaven National Laboratory Public Relations Office



Volume 24, Number 1

January 8, 1970

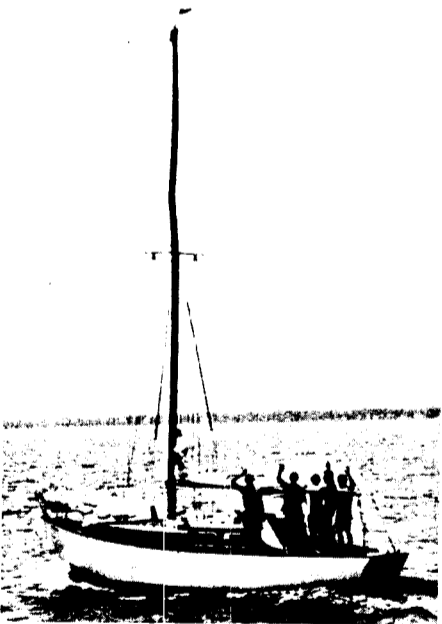
The Forsyth Saga — A Year In The Sun

Everyone who has dreamed about taking a year off and doing just as he has always wanted to, will enjoy the Lecture and film to be presented next Wednesday in Berkner Hall.

Eric Forsyth, his wife Edith, and their four-year-old son Colin, made their dream come true in July of 1968 by chucking home, job and convention and sailing off in a 35-foot sloop to spend a year in the Caribbean.

Forsyth, an engineer in the Accelerator Department, will talk about his trip and show color films taken on the way, at a Naval Reserve-sponsored lecture given in Berkner Hall at 7:45 p.m. Wednesday, January 14.

In order to answer the many questions about the trip that were asked of him after he came back to Brookhaven this summer, Eric wrote a short report of the highlights of the cruise that might well be described as a "cruising guide to the Caribbean Waters."



In the report were included tips on the best shopping places among the islands, what kind of milk to buy and maintenance hints for the sailboat skipper.

Mrs. Forsyth, a physician who was formerly on the staff of the Medical Research Center of BNL, took care of the health of the crew during the year-long trip.

The lecture and film showing is open to all members of the staff and their families who wish to escape the doldrums of winter weather and live for a short while with the Forsyths in "A Year In The Sun."

Coming Attractions

- 1/8 BERA Concert - James Gemmel
Free admission
(Berkner Hall - 8:30 p.m.)
- 1/14 Navy Lecture - Film
Eric Forsyth - A Year In The Sun
(Berkner Hall - 7:30 p.m.)
- 1/21 BNL Lecture - Myron Ledbetter
(Berkner Hall - 8:30 p.m.)
- 1/26 Movie - Zero de Conduite
French Group of BNL
(Berkner Hall - 8:30 p.m.)

Visit to Obninsk 1969

by Sol Pearlstein

From time to time BNL Staff members visit places that are off the beaten track for most Americans. The Brookhaven Bulletin staff believes that a look at some of these far away places through the eyes of one of our fellow workers is of interest to many readers. The editor asked Sol Pearlstein to write about his recent trip to the Soviet Union.

At the Obninsk Institute of Power and Engineering, research is performed in support of the Soviet Union fast reactor program. Obninsk is located 107 kilometers from Moscow at about the same distance BNL is from New York City. There are 3000 employees - about the same number of people that work at BNL. There the similarity ends, for Obninsk is connected to Moscow by a punctual, swift-running, smooth-running, wide-track railroad line that is part of the route between Moscow and Kiev. The Institute is located near the station, for while in the town of 30,000 people there are some busses to transport workers and children, there are no taxis and very few private cars. Other cars that are seen are owned by the state and used for official purposes.

As you approach the main entrance to the Institute there are - arranged at the left side of the road in Burma-Shave style - large, square red signs with white letters spelling L-E-N-I-N. I thought this was a bit too much and looked back as I passed, secretly hoping to indeed find a Burma-Shave message. But there was L-E-N-I-N coming and going. Lenin is considered the father of their country as Washington is considered the father of ours. Can you imagine driving through the BNL Main Gate and being greeted by W-A-S-H-I-N-G-T-O-N? On the right was a group of perhaps twenty large pictures of the faces of Obninsk workers. The sign accompanying the pictures was also red with white lettering. Translated, the sign gave credit to the group of workers for their efforts in "Russianization" of the Institute's programs.

I presented a recent photograph of the people in the National Neutron Cross Section Center. I also gave a talk describing the placement of the NNCSC within the BNL organization and the role of the NNCSC in coordinating the data evaluation work of many laboratories within the United States. For illustration I used slides of BNL obtained from the Public Relations Division, a map of the United States and slides of my own showing scenic areas around the U.S. laboratories. One slide of the Craters of the Moon National Park just outside the National Reactor Testing Station in Idaho, proved to be very timely. The visit to Obninsk took place on Wednesday, November 19, 1969. My talk began at precisely the moment the astronauts set foot on the moon.

(continued on Page 2)

Snow Season Half Over — Only Three Months to Spring

The large storm center that was born in the Gulf of Mexico on Tuesday morning was watched with apprehension by meteorologists all over the nation. It was felt that this storm would follow classical patterns and move up the Atlantic Coastline to bring heavy snowfall to the New York - New England area. However, when the storm reached Cape Hatteras, the spot where most storms intensify, it changed direction as it gained momentum and turned east out to sea. Instead of dumping an expected 4 to 6 inches of snow on Long Island, only 2 inches of light snow fell without the predicted high winds that usually accompany such a storm. Because of all the warnings that preceded the storm, snow removal equipment cleared up the small amount that did fall in short order.

The current snow season started in October this year with a trace of snow on the First. During November there was again only a trace of snow, and it was not until December that any real snowfall occurred.

During the month of December, a total of 12¼-inches of snow fell during 11 days of the month, for a normal amount for the month.

Since the start of the new year, up to the most recent snowfall, there was only periods of freezing rain that helped to keep December's snow from melting away. Weather since the first of the year has not been marked by any record low temperatures, but has been affected by the constant cold spell that has kept ice accumulations from melting. As far as "degree days" are concerned, the year of 1970 has been starting off with more than normal.

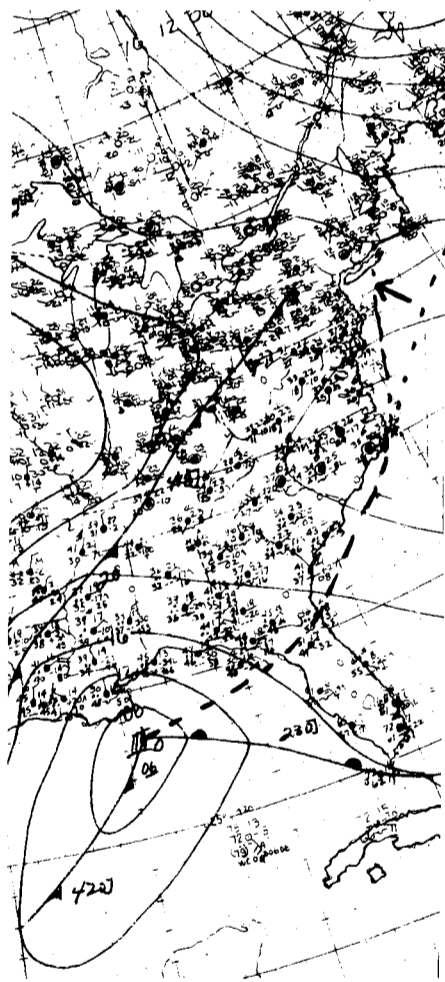
Forecasting A Problem

Forecasting the weather for Long Island is a problem. Frequently coastal areas are on the edge of snowstorms, causing inaccurate predictions of the snowfall.

As usual for this area, Wednesday's storm dropped more snow on the North Shore than on the side of the Island nearer the Atlantic Ocean. Local Meteorologists have observed that the "snow line" for this area is generally in the neighborhood of the LI Expressway - areas to the north of the Expressway generally have more snow than areas to the south of the expressway.

The worst month for snowfall in this area is February, which is borne out by records kept at the Lab since 1947. It was in 1947 that the largest single snowfall was recorded, the record 26-inch fall that paralyzed the state for almost a week.

Even though there have been many heavy snowfalls recorded on March 17, St. Patrick's Day, the snow season is generally conceded to be over by March 21st each year.



Weather map of the eastern United States showing the gulf storm that caused the recent snowfall. As of Tuesday morning, weathermen predicted that the storm would cross the Florida peninsula and then travel north along the coast as far as Hatteras and then after intensifying, either go out to sea or continue along the coast to Long Island.

Summer Student Program Application Deadline Near

Brookhaven will again offer a limited number of summer appointments to undergraduate students majoring in applied mathematics, physical and life sciences and in electrical, chemical and nuclear engineering.

From June 15 through August 28, participants will work with members of the scientific staff and gain research experience in nuclear physics, various areas of chemistry and engineering; in the physical, chemical and biological effects of radiation; in the application of tracer techniques to chemical and biological processes; in the assembly, testing and calibration of equipment and instrumentation used in reactor systems and high energy particle accelerators.

Applicants must be citizens of the United States, at least 18 years of age, and must have completed their Junior or Senior year

by June 1970 with a B average or better. Preference will be given to those undergraduate students who appear to have a genuine interest in research and teaching as a career and whose choice of field coincides with research in progress at the Laboratory.

Application forms are available from Jane Garron, Office of Scientific Personnel, and must be completed and returned before the deadline date of January 31. Applications will not be acknowledged on receipt; however, notice of the decision on each application will be sent between April 1 and April 15, 1970.

The Summer Student Program is supported by the Division of Nuclear Education and Training of the United States Atomic Energy Commission.

Snow Closing

	AM	FM
WRIV Riverhead	1390	-
WHRF Riverhead	1570	103.9
WPAC Patchogue	1580	106.1
WALK E. Patchogue	1370	97.5
WLNG Sag Harbor	1600	92.1
WBAB Babylon	1440	102.3
WHLI Hempstead	1100	98.3
WLIX Islip	540	-
WGSM Huntington Station	740	94.3
WGLI Babylon	1290	-

Small Boat Handling Course Starts Jan. 12

There was an early hint of Spring and the coming boating season in the announcement by George C. Wagner, Educational Officer of the Patchogue Bay Power Squadron, that the Spring session of the free Piloting and Small Boat Handling course will get under way on January 12th, 1970. Registrations will be accepted at the Bellport Senior High School, Beaverdam and South Country Rds. on the evening of the above date, starting at 8 p.m.

The course, expected to run about twelve weeks, meeting one night a week, is free of all charge for tuition and text material. The student will however, be expected to furnish a few working tools such as dividers, protractors, rulers and pencils. The course is open to all interested men and women, sixteen and over. Boat ownership is not required. Classroom lectures and demonstrations will be given by Squadron members with many years of actual experience afloat and proven teaching ability. Among the many subjects taught will be; seamanship, required safety equipment and its use, nautical rules of the road, use of the mariners' compass and chart reading. The course is a **must** for all newcomers to boating, to all who contemplate buying a boat and many "Old Timers" may derive benefits therefrom.

Further information regarding the course may be had by contacting George C. Wagner, Ext. 7573 or YA4-3267.

Classes will also be held in the following localities:

- Bellport Sr. High School
- Monday, January 12th, 8:00 p.m.
- Mastic Beach, Wm. Floyd High School
- Tuesday, January 13th, 8:00 p.m.
- Port Jefferson, Vandermuellen High School
- Wednesday, January 28th, 8:00 p.m.
- Westhampton High School
- Tuesday, January 13th, 7:30 p.m.
- Mattituck High School
- Wednesday January 14th, 7:30 p.m.
- Bayshore, Clarkson School
- Thursday, January 22nd, 8:00 p.m.
- North Babylon High School
- Tuesday, February 2nd, 8:00 p.m.

Obninsk

(Cont'd)

The computer equipment available at Obninsk does not reflect the technological advances the Soviet Union has made in this field. Instead it merely reflects the low priority the nuclear data programs have been given at Obninsk.

We were dinner guests of the Obninsk Institute in a dining room in much the same way some visitors are entertained at the BNL Center. At dinner the U.S. political situation was freely discussed but the Soviet Union political situation not so freely. President Kennedy is a very popular name in the Soviet Union and my gifts of Kennedy half dollars were much appreciated. Each visitor was given a lapel pin bearing the insignia of the Obninsk Institute. (Lapel pins are very popular in the Soviet Union.) A group picture taken during the day of ourselves with the Obninsk group was ready before our departure.

We returned by train arriving in Moscow a few minutes to eight in the evening. Our interpreter-guide said that something would happen very soon but would not tell us what. At exactly eight o'clock there was a fine display of fireworks over Moscow, 4th of July style, continuing for about ten minutes. It happens once a year on Army Day. The visit to Obninsk was a very interesting one, and I should like to return in the future to see what changes have occurred.

Dollars and Sense

Frank Federmann
Income - Part I

You pay federal and state taxes on most of your income. In this week's article we will discuss three major sources of taxable income - 1) salaries; 2) interest income; and 3) dividend income.

Salaries paid to you during 1969 will be reported to you by your employer(s) on form W-2. It is a good practice to compare the W-2 you receive with your own records (accumulated total of your salary check stubs). If an error is discovered, notify the employer involved immediately. An item of income also included on W-2s is "excess" employer contributions to group life insurance plans. In the case of BNL employees, this would only apply if the employee's salary is in excess of \$25,000 per year and he has elected Supplemental I and II life insurance coverage.

Interest income is most commonly derived from savings accounts (sometimes mistakenly called dividends), U.S. Savings Bonds, corporate bonds and municipal bonds.

Interest on savings accounts is fully taxable and is deemed received when it is credited to your account (rather than to your passbook). The savings institution will provide you with a form which will indicate the amount of interest earned in 1969.

Here and There

Claire Lamberti

Pedro A. Thieberger (Physics) was the inventor of "Pulse Height Compensation in Time-to-Amplitude Conversion" for which the AEC was granted U.S. Patent 3,484,703 on December 19, 1969.

Frederick P. Cowan (Health Physics) attended a meeting of the Board of Directors of the National Council on Radiation Protection and Measurements in Washington, D.C. on December 18.

J. Baum, F. Cowan, C. Distenfeld, and **A. Nappi** (all of Health Physics) recently attended the Second International Conference on Accelerator Dosimetry and Experience at Stanford, California. **J. Baum** and **F. Cowan** presented papers entitled "Factors Affecting Pulse Size in Sealed Tissue-Equivalent Counters" and "Recent Work of the NCRP, ICRU and ICRP of Interest to Accelerator Health Physicists," respectively.

Randolph A. Hudson, Jr. (Reactor Operations) attended a symposium on Power Generation and Environmental Change, held during the Annual Meeting of The American Association for the Advancement of Science (AAAS) in Boston, December 25-31.

The USAEC received U.S. Patent 3,480,870 on November 25, 1969 for "Parametric Preamplifier Circuit for Charge Particle Detectors," invented by **Robert L. Chase** and **Veljko Radeka** (both of Instrumentation).

Harold H. Smith (Biology) accepted the invitation to become a member of the Honorary Editorial Advisory Board of Radiation Botany for a five year term, commencing in January 1970.

Raymond Davis (Chemistry) was elected to Fellowship in the American Physical Society.

Irving Polk, Head of the Mechanical Engineering Division, was guest of honor at a surprise luncheon commemorating his 20th anniversary with BNL on December 18 at the Brookhaven Center.

U.S. Savings Bonds are unique in that you may elect to declare the interest on such savings as earned, or when the bond is redeemed. The first year you elect to declare interest as earned, you must declare all interest accrued to that time.

Interest on corporate bonds is fully taxable. Municipal bond interest is tax exempt for federal income tax purposes and generally tax exempt in New York State if the bond was issued by a New York agency or authority.

Dividends received from domestic (U.S.) corporations are generally taxable income. However, the first \$100 of dividends received by an individual is excluded from his taxable income. A \$200 exclusion is available if a joint return is filed, providing that each spouse received at least \$100 of dividends. Dividends received from securities jointly owned are to be divided equally in determining this exclusion.

Next week several other types of income will be discussed. Among them scholarships and fellowships, business income, rents and royalties, trusts and miscellaneous income.

NOTES:

1. The 1970 Tax Reform Law that has been signed by the President of the United States will *not* affect tax returns for 1969.
2. BNL W-2 forms (annual wage and tax statements) will be mailed out on or about January 15, 1970 by the Payroll Department. Kindly refrain from calling our Payroll Department during their peak period; the exact date of mailing will be announced by the *Bulletin*.

Telephone Troubles

Faulty operation of a telephone at BNL should be reported to Telephone Repair Service, Ext. 393, as listed on the inside front cover of the BNL Telephone Directory.

Sometimes, due to system difficulties, many phones will simultaneously not have a dial tone, or a busy signal or unusual sounds will be heard instead of the normal dial tone. Frequently these minor faults do not affect the basic operation of the telephone system, so that by ignoring them and dialing as usual, the call will go through. (This applies at home as well as at the Lab.)

A Guide to Happy Retirement

*Good morning, Mr. Janitor
How are you, Mr. Plumber
The weather's beautiful Mrs. Secretary,
Going on vacation this summer?*

*I hear your wife isn't feeling well.
So glad the kids are fine.
I had an over due bill to meet.
That raise came just in time.*

*You helped a lot staying late Miss Nurse.
Plus swapping days off too.
Without this rotating, versatile staff,
We don't know what we'd do.*

*We all must work to live a life
We all have a bed to feather
Making beds is no man's labor of love
But it's easier done together*

*Try to compliment your work-mate's job
And criticize when it's in order
Now don't go deep off either end
Everything must have a border*

*A dribbling thanks from those above
Is sometimes scarce and scant
A crumb is just a crumb to some
But a whole loaf to an ant*

*Now after 5, 10, or 20 years
It's a pleasure to look back.
Let my memories of you mean more to me
Than my medals, pins, and plaque.*

—Robert A. Brown (Medical)

BROOKHAVEN BULLETIN

Published Weekly for the Employees of
Brookhaven National Laboratory

CARL R. THIEN, Editor
CLAIRE LAMBERTI, Editorial Assistant

40 Brookhaven Ave. Upton, N.Y. 11973
Telephone 516 924-6262 Ext. 7238

NORBERT J. DERNBACH
Public Relations Officer

Letters To The Editor

Dear Sir:

The family of Henry M. Krauss wishes to extend their appreciation to the Laboratory and friends for all the cards, phone calls and visits while Henry was ill.

Alice Krauss

Arrivals & Departures

Arrivals

Anthony Allegretti.....P.E.P.
Nannette Dwyer.....Fiscal
Clive P. Hobbberger.....I. & H.P.
Karen B. Moyer.....Medical
Robert H. Whisker.....Applied Math.

Richard A. Pfister, who had been on military leave of absence since April, 1967 returned to work in the Accelerator Department.

Departures

Emil R. Adamik.....Medical
Margaret M. Bartley.....Physics
George H. Barton.....Personnel
John H. Bennett.....P.E.P.
John F. Conant.....D.A.S.
Veronica A. Evans.....I. & H.P.
Raymond E. Lawrence.....Applied Math.
Frank G. Seier.....Physics

Henry M. Krauss, who had been employed in the Supply and Materiel Division since April, 1947 died December 24, 1969.

USNR Research Co. 3-9

Brookhaven National Laboratory

Upton, New York YA4-6262 Ext. 2910

Drill Schedule

For Quarter Ending March 31, 1970

January 14

A Year in the Sun
Eric Forsyth

January 21

Cell Ultrastructure
(Brookhaven Lecture)
Dr. Myron Ledbetter

February 11

Analysis of Rocks from the Moon
Dr. Raymond Davis

February 18

Atomic Beams
(Brookhaven Lecture)
Dr. Victor Cohen

March 11

Problems of Drug Abuse
Dr. Leo Del Cortivo

March 18

Free Radicals in Biological Research
(Brookhaven Lecture)
Dr. Donald Borg

New Schedule for Safety Items

Safety Shoe Issues

Mondays 1330 to 1630
Thursdays 0900 to 1200

Safety Spectacle Issues

Mondays 0900 to 1200
Wednesdays 1330 to 1630

Mother-to-be Can Go To School

A new series of classes for expectant mothers will be conducted by the Suffolk County Department of Health starting Monday, January 12, from 2:00-4:00 p.m. at the Health Department, County Center, Riverhead.

The six-week course will be conducted by Mrs. Dorothy Krouse, a Public Health Nurse, and will give the expectant mother information about her pregnancy and what may be anticipated during her confinement. It will include discussion on human reproduction, preparation for labor and delivery, nutrition, care of the infant, breast feeding, formula preparation, and demonstrations of bathing the baby. A tour of the maternity division of a hospital will be made during the course.

Breathing and relaxation techniques will be taught to those who wish to participate, are beyond the first trimester, and have the physician's written consent.

All pregnant women are welcome, particularly those expecting their first baby. Further information may be obtained from the Riverhead office of the Health Department, telephone 727-4700, extension 373.

Bowling News

Irma Carl

Red League

Dimwits and Fireflies have tied for first place and will have a roll-off. The Sandbaggers came in third.

Purple League

Standings not known yet.

Rose League

Unmentionables have taken first place and the Bloopers second for the first half of this season.

Pink League

Hearty congratulations to the Fiscal Assets who have captured first place and to the Alley Oops who took second place. The rest of you gals still have a chance in the second half coming up - go get 'em.

Rifle-Pistol Club Meeting

The Rifle-Pistol Club will meet at the Recreation Building on Wednesday, January 14 at 5:10 p.m.

Cafeteria Menu

Week Ending January 15, 1970

Friday, January 9	
Old Fashioned Clam Chowder	
Fish 'n' Chips/Tartar Sauce	.65
Round Roast of Beef au Jus	.65
Shrimp Chow Mein/Soy Sauce	.75
Monday, January 12	
Chicken Chowder	
¼ Roast Stuffed Chicken/Cranberry Jelly	.65
Breaded Pork Chop/Apple Sauce	.65
Macaroni & Chopped Beef Steak	.65
Tuesday, January 13	
Beef Barley Broth	
Baked Meat Loaf/Brown Gravy	.65
Beef Chop Suey on Rice	.65
Broiled Chicken Livers/Bacon Strips	.65
Wednesday, January 14	
Cream of Mushroom Soup	
Veal Parmigiana	.75
Fried Scallops/Tartar Sauce	.80
Knockwurst/Mashed Potatoes & Sauerkraut	.65
Thursday, January 15	
Puree Potato Soup	
Round Roast of Beef/Brown Gravy	.65
Old Fashioned Chicken Pie/Pastry Cover	.80
Spaghetti/Italian Sausage/Marinara Sauce	.70

Pianist James Gemmell Featured Young Artist



James Gemmell will present an exciting program on the Young Artist Recital of the BERA Concert Series which is open to the public without admission charge. The concert is scheduled for Thursday, January 8 at 8:30 p.m. at Berkner Hall.

James, son of Lee Gemmell of the Health Physics Division, began the study of piano at the age of eight with Olivia Stickley. He was soon making numerous solo appearances in the Long Island area. His intensive study began, however, when he was accepted to the Oberlin College Conservatory of Music which has produced many American talents on the musical scene. He is now a senior at Oberlin and has been under the tutelage of Miles Mauney and for the past two summers under Olga Stroumillo. Gemmell's professional experience as an accompanist was broadened

when he became an official accompanist for the Metropolitan Opera Auditions in Cleveland and the Meadowmount School of Music under the direction of Ivan Galamian. His concert at BNL will consist of selections from Chopin, Schubert, DeBussy and Brahms.

Mixed Volleyball Ties Broken

The Bouncers, though dribbling up 'til now, took on an expert formation taking all three games on December 15th. Even so, the powerful Jets maintained first place by taking two wins. The Nets are in second place due to their previous nettings and one win on the 15th. However, first, second and third place are each separated by only one game. The poor Mets, not quite living up to their name, trail in last place by three games. —Lorraine Osterer

Maxi-Mini Temperature Control



Cathy Krivicich, DAS, achieves the proper temperature control during these cold days with a combination of a maxi-coat for outdoor use and a mini-skirt for use in warm office. —Humphrey



BERA Investment Lectures

In response to the interest indicated by many of our employees, we have made arrangements with two of the leading Investment Companies to present a series of lectures dealing with Personal Investments.

The BERA sponsored series will consist of four, two-hour sessions scheduled to be held at Berkner Hall on four consecutive Wednesday evenings, January 21, 28, February 4 and 11, starting at 8:00 p.m.

The topics to be discussed will cover a wide range of subjects which will be of interest to the beginning investor as well as the advanced - mutual funds, inflation, money management, types of investments, market trading techniques, bonds, etc.

An outline of the program is now being prepared by the two gentlemen who will conduct the lectures, Mr. Harry L. Hackett, Account Executive, Merrill Lynch, Pierce, Fenner & Smith, Inc. and Carl Lanzisera, Account Executive, Bache & Company. A copy of the outline and subject schedule will be mailed to registrants and published in next week's *Brookhaven Bulletin*.

If you or your spouse would care to attend any or all of the sessions, please register by calling the Recreation Office on Extension 2808 as soon as possible.

Judo Club

The BNL Judo Club has resumed its activities after the holiday recess.

Training sessions take place on Tuesdays and Thursdays in the Gymnasium at 5:10 p.m.

Hair Spray - Dangerous ? ?

Yes, hair spray, which seems like such an innocuous material, so easy to use just by pressing the little button on the top of the aerosol can, and so effective in its results, can be dangerous, **Very** dangerous. Have you ever noticed the word **Flammable** on the can containing your hair spray? It is not there without meaning. . . it is a warning to you that hair spray and fire are not compatible. Something will happen when they meet! And that something could be disastrous to you!

It is especially risky to use hair spray where several people are side by side in the same room, such as in a restroom. If one person should be using hair spray when another strikes a match or operates a cigarette lighter, a flash fire could occur engulfing the head and face of the one using the spray and possibly others nearby. So, be careful! Don't let this happen to you!

It is well to bear in mind, also, that eye injury can occur if certain types of this preparation are accidentally sprayed into the eye.

Racquetters

Now that 1970 has arrived, it becomes necessary to plan for the coming tennis season. One of the necessary jobs is to make an inventory of equipment to see what is still usable and what items must be replaced.

BERA has provided 8 tennis rackets for short-term loan. At the present moment, 4 rackets appear to be out on long-term loan - (or have they disappeared?)

Please, return the 4 BERA rackets so that we can determine how many need replacement or repair.

Cigar Smokers Note

As a result of the requests of a few cigar smokers, Schrafft's has placed a cigar vending machine in the lobby of the Cafeteria-Lecture Hall. This machine will be kept there for your use as long as warranted.

Classified Advertisements

Positions Available

TECHNICAL SPECIALIST - Medical
OPERATIONS ENGINEER - Accelerator

Employees interested in applying for above positions should inform their Supervisor and file a written request with the Employment Office.

Autos & Auto Supplies

66 MUSTANG CONV - Red/wt top, V8, console, buckets, wood grained int, excel cond. \$1395. C. Nielson, Ext. 7677, 325-0968.

64 DODGE POLARA - W/1966 383 eng, 4 spd Hurst, excel cond. \$675. Ext. 318, 924-3783 after 5.

68 VW FASTBACK - Dealer serviced, just tuned, excel cond. Jerry, Ext. 449, 744-8894.

66 CHEVY IMPALA - Good cond, new tires, battery, shocks. \$1250. Steve, Ext. 7467.

WATER PUMP - For 1965 Willys Jeep, OHC eng. \$10.50 firm. M. Sautter, Ext. 7112 or YA4-3338.

48 CADILLAC - Fleetwood, black, excel cond, extra parts incld. \$250. 585-2699 after 5.

59 STUDEBAKER - Runs, but won't pass inspection unless work is done on it. 281-5328.

65 FORD COUNTRY SEDAN - Auto trans, ps, V good eng, body, tires, new muffler system, rear snows. \$1000. Ext. 2435 or 538 after 6.

63 FORD FAIRLANE STA/WAGN - 6 cyl, stick, new tires, shocks, generator, clutch, inspection sticker. \$300. Shreiner, Ext. 398, 2759.

62 TRIUMPH - 2 dr sedn, overhauled eng, top carrier. \$75. David, 246-7684 days, 928-1155 evenings.

67 SAAB - 3 cyl w/oil injection, new in early 1968. R. Marr, Ext. 2729.

CORVAIR GEN - New rebuilt. \$7; 1 pair carbs, Corvair, auto choke, rebuilt. \$15 pair. Bob, Ext. 2450, 289-0357.

69 OPEL KADETT WAGON - 55 hp eng, excel cond, extra mounted snows. \$1500. Ron, 567-1572 after 6.

2-LIKE NEW SNOW TIRES - Size 6.50x15, mounted on Volkswagen wheels, for 1966 or older Volkswagen. \$40. J. Disparii, Ext. 7415 at noon time, 281-8943 after 5:30.

TIRES - 2 reg plus 2 snow, 7.75x14, Sears Premium, barely used. \$60. Ext. 7148 or 924-8670.

62 VW BUG - White, new tires, 70,000 mi plus, uses oil. \$350. J. Olson, Ext. 441, 289-1463.

66 VALIANT - 4 dr, white, 225 cu in 6, std trans, 48,000 mi, excel cond, new snow tires. \$1000. J. Olson, Ext. 441, 289-1463.

57 LINCOLN - Good for parts, new battery, new starter, 6 good tires. \$60. Ext. 7143, 281-8390.

62 OLDS - F85, auto trans. r/h, snow tires. \$200. 878-2083 before 3.

63 FORD - 2 dr sedan, 6 cyl, auto trans, clean. \$295. J. Mann, Ext. 2221.

59 FORD - 4 dr sedan, 6 cyl, std, good reliable second car. \$75. J. Bauerneind, Ext. 2822, 7827.

2 SNOW TIRES - Mounted on rims, 7.00/6.50x13, like new. \$18 each; 1 new w/w, 7.00/6.50x13. \$10. John, 475-0126.

60 PLYMOUTH - Good running cond, 8 good tires. \$75. Jose, Ext. 640, 744-3729.

66 FORD GALAXIE 500 - V8, 4 dr, auto trans, ps, r/h, burgundy/blk, excel cond, owner leaving. Ext. 7792.

60 CHRYSLER - New Yorker, full pwr. \$175. Jerry, Ext. 2934, HE3-3706.

Boats & Marine Supplies

9'2" BOSTON WHALER SQUALL - Plus spare unused sail, used 3 months only, new price \$680 plus tax, asking \$575. Ext. 2435 or 538 after 6.

"PRAM TYPE" ALUM 10 FT BOAT - Floatation built in, good cond. \$58. JU5-8322.

STAR NO. 1233 - W/2 sets of sails. \$200. Ext. 2981.

Miscellaneous

SKIS AND BOOTS - Child size 1, hardly used. \$12. Ext. 2435 or 538 after 6.

TV - G.E. console. \$40; iron, Proctor Silex. \$5. Ext. 2435 or 538 after 6.

CAMPER - Apache Ramada. \$1350. Steve, Ext. 7467.

SIAMESE KITTEN - 6 wks old, seal, female from champion stock, w/papers, CFA reg. \$25. Ext. 2179, JU1-7165.

DUST COVER - Deluxe high tinted, for dual 1000 series. \$7.50; ADC 220 stereo unit, like new. \$5. Tainiter, Ext. 2728.

AUTOMATIC ELECTRIC FRYER-COOKER - Chrome, new, \$9. Ext. 2492.

HI-FI AMP - 20 watt, solid state, 20 Hz to 40 KHz, amperex mid, PCA 8-36. \$17.50. Gil P., Ext. 2204.

MALL CHAIN SAW - Model 2-M-6, w/new 30" long chain, automatic oiler, J. Papa. 281-7595.

SKIS - 4 1/2' long, beginner. \$4; mens hockey skates, size 9, vg cond. \$4; boys ski boots, size 6. \$8.50. Gil, Ext. 2204.

FOLK GUITAR - 6 strings, excel cond. \$6.50. Gil, Ext. 2204.

HOCKEY SKATES - Size 8. \$4. AT6-1214.

AURORA MODEL RACING EQUIPMENT - Track-straight, curved crossovers, transformers and controls, excel cond, half price. AT6-1214.

SKATE BOARDS - Good cond. \$1 & \$2; camera, Revere automatic 504, never used. \$5. AT6-1214.

LONG ISLAND - So beautiful from spacious skies, view it sea to shining sea, discover flying, experienced certified pilot. \$3/1/2 hr. A. Roesch, Ext. 7667.

INTERNATIONAL HARVESTER CUB CADET - 10 hp, with 42" mower. \$550; lawn vacuum attachment. \$200. Webster, 286-3647 evenings.

FREE YARD CLEANING SERVICE - Start the new year right, I will clean your yard of that junk VW "free." John, Ext. 7461, 744-8765.

SNOW SKATES - Two double runner for children, black, size 13; white, size 12; perfect cond. \$3 each. Rowley, 631.

5 WATT GUITAR AMPLIFIER - For beginner, very good cond, R.N. Drucker, Ext. 2185.

BLONDE FALL & WIGLET - Real hair, hardly worn, \$125 when new, asking \$75. Bonnie, Ext. 2745.

SKI JACKET - Men's size med, blue nylon shell, 100% goose down filled, too large for me. \$30. Bill, Ext. 7693.

B^b CORNET - Olds Ambassador model, only six months old, like new, list price \$184. sell \$85. Bill, Ext. 2392.

TRUMPET - With case and mouthpiece, good cond, ok for student and cheaper than renting. \$30 full price. Bill, Ext. 2393.

LIVING RM SET - 7 piece Modern Danish, like new, only 6 months old. Ext. 502.

Real Estate

Real Estate advertised for sale or rent is available without regard for the race, color, creed or national origin of the applicant.

For Rent

FURN BASEMENT APT - All paneled, bath, pvt entrance, all utils, close to Lab/shopping, gentlemen pref. 281-8044 after 5.

FURN HOUSE - E. Patchogue, near bay, 4 bdrms, avail from Feb. thru July or Aug. Ext. 2729, 475-1372.

UNFURN HOUSE - 3 bdrms, dishwasher, refrig, w/w carpet, E. Setauket, avail Feb. 1, 70. Ext. 2954, 473-7841.

FURN HOUSE - 2 bdrms, dining/den w/fireplace, stereo, TV, hamlet of Brookhaven, avail Feb-June 15, 1970. AT6-1068 eves.

Wanted

SHOT GUN - Good cond, 20 ga pump action or single shot. JU5-8322.

GUITAR - 12 string, "steel string type," good cond. JU5-8322.

SKIS, SKI BOOTS, POLES - For 5'9", 160 pound male, in good cond. Jack, Ext. 2118.

ELMACK AF 67 - Need not be in working cond, cheap! Rolf, Ext. 638.

TO RENT - 1-2 bedrm house, Shirley, west side of Wm Floyd Pkwy, Baybright Dr to Smith Point Bridge only. Claire, Ext. 2131, 281-8306 after 5:30.

STUDENTS - Who wish to study piano, accordion or organ, beginners or advanced, my home or yours. Don, 281-8044 after 5.

BOYS FIGURE SKATES - Size 4 or 5. Rowley, Ext. 631.

GENERAL HOME MAINTENANCE WORK - Remodeling, repairing, paneling, basements finished, shingling, reasonable. 732-3762.

BABYSITTING JOBS - Reliable woman will care for your children, preferably my home. E. Patchogue. 475-2145.

BOAT WINCH - Lou, Ext. 485.

PORTABLE PIANO - Lou, Ext. 485.

Lost & Found

FOUND - Pr men's gloves, brown leather & knit combination, found 1/5, 510 parking lot. Ext. 640.

Classified Ad Policy

Deadline is 12 noon Friday for publication the following week.

1. The Brookhaven Bulletin's classified section may be used only by active and retired Laboratory employees.
2. All items for sale or rent must be the advertiser's property.
3. Ads for material acquired for resale in association with a full or part-time business cannot be accepted.
4. Firearms offered for sale or trade may not be brought on site.

5. Ads not carried because of space restrictions will be held for publication in the next issue.
6. Ads are run only once and must be resubmitted if they are to be repeated.
7. Ads should be restricted to 20 words or less and typed or printed on the form provided, and must bear the employees signature.

For Sale: Auto & Auto Supplies Wanted
 For Sale: Boats & Marine Supplies Carpools
 For Sale: Miscellaneous Lost & Found

Check the heading applying to your ad.
Print or type your ad in 20 words or less.

Ads concerning property for sale or rent cannot be accepted on this form. Special Real Estate Ad forms are available at the Office of the Brookhaven Bulletin, Room 112, 40 Brookhaven Avenue.

(Name & Phone No. To Call)

Employee's Signature: Life No. Ext.

Send to: Brookhaven Bulletin, 40 Brookhaven Avenue