

## Full Speed Ahead On Heavy Ion Project

The Tandem/AGS Heavy Ion Project, a 10.3 million project, is funded by the U.S. Department of Energy. Central to its design is the construction of a 2000-foot-long, 10-foot-diameter, beam transfer line to serve as a link between the Alternating Gradient Synchrotron (AGS) and the Tandem Van de Graaff accelerator. When this link is completed in 1986, highly charged atomic nuclei will be accelerated to high energies in the AGS. Scientists can then study these "heavy ions" to see what happens

when nuclear matter is compressed to extreme states of temperature and density.

The first step towards these studies was taken at a groundbreaking ceremony held on the hillside northeast of the intersection of Rutherford Drive and Cornell Avenue on Wednesday, October 16, at 11 a.m. Construction of the tunnel will begin shortly. Detailed design of the conventional construction was done by Amman & Whitney, Inc. and the Balport Construction Co. is the contractor who will build these facilities.

Following are excerpts from remarks made at the groundbreaking ceremony.

*"...Joining the AGS and the double MP Tandem Van de Graaff will provide a unique scientific opportunity. These accelerators have distinguished research records in high energy physics and nuclear physics, respectively. This new facility will give the United States an unmatched ability to examine nuclear matter under conditions only previously present at the creation of the universe. Brookhaven scientists who conceived and designed this project are to be congratulated for their ingenuity and creativity."*

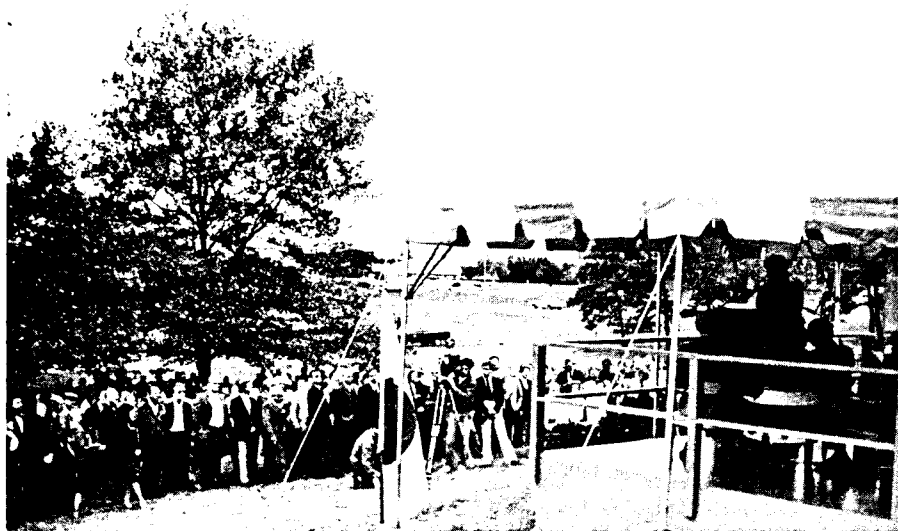
— Donald Hodel, Secretary  
U.S. Department of Energy  
(From a letter to Laboratory Director Nicholas Samios, read at the groundbreaking by Alvin Trivelpiece.)



Alvin W. Trivelpiece, Director, Office of Energy Research, DOE, at the podium.



Laboratory Director Nicholas Samios (left) and Congressman William Carney chat after the proceedings.



Laboratory Director Nicholas Samios addresses the crowd of over 300 people who attended the groundbreaking ceremony last Wednesday. With him on the dais are the occasion's three speakers, Alvin W. Trivelpiece, Director of the Office of Energy Research, U.S. Department of Energy; William Carney, U.S. Congressman from the First Congressional District; and Herman Feshbach, Chairman of the Board of Trustees of Associated Universities, Inc. (AUI). Also seated on the platform were Robert Hughes, President of AUI; Paul Reardon, Associate Director for High Energy Facilities; Derek Lowenstein, Chairman of the AGS Department; Arthur Schwarzschild, Chairman of the Physics Department; Horst Foelsche, Project Manager; and Peter Thieberger, Deputy Project Manager. —photos by Rosen



The first three spadeful of earth for the beam transfer line were moved by (from left) Nicholas Samios, William Carney and Alvin Trivelpiece. Carney wielded the spade which broke the ground for the AGS, Trivelpiece the shovel originally enlisted for the groundbreaking for the Tandem, and Samios a new spade, befitting the new project. After Herman Feshbach (left), Robert Hughes (right), and other guests took their turns at digging the tunnel, the employees attending the ceremony were all invited to follow suit.

*"...This is a really good idea, to take two existing facilities, to connect them together in an intelligent manner and have something in which the whole is much greater than the sum of the parts....It is this kind of curiosity-driven research that I think is so vital, and it is the curiosity-driven activities of 15, 20, 30, 40 years ago that led to many of the advances that we take advantage of today."*

— Alvin W. Trivelpiece, Director  
Office of Energy Research  
U.S. Department of Energy

*"...As a physicist I'm thrilled by the scientific opportunities which will become available when, with this accelerator combination, we enter into a new region, a new variety of experimental conditions, a new place where we have not been before....It's for this reason that nuclear and particle physicists, experimentalists and theorists, from here and abroad, will find a path to Brookhaven soon."*

— Herman Feshbach, Chairman  
Board of Trustees  
Associated Universities, Inc.

*"...We're going out into the areas where we don't know the answers, to seek the answers. The Congress is committed to it, the Laboratory is committed to it, we as a nation are committed to it. And Long Islanders should be very, very proud that the major work in heavy ion physics that will take place in the next, I hope, three decades, will take place right here at Brookhaven National Laboratory."*

— William Carney, Congressman  
First District  
U.S. House of Representatives

*"...One of the reasons we have it here is because, indeed, Brookhaven is a multidisciplinary lab. We're not focused on one subject....At the AGS now, we have a user group signed up of over 300 people, nuclear physicists from the outside who are interested in doing the new physics at the AGS, and we already have five proposals for doing experiments on this machine."*

— Nicholas Samios, Director

## Associate Director Named For Applied Programs

Seymour Baron, senior corporate vice president of Burns and Roe, Inc., will join the Laboratory on October 22 as Associate Director for Applied Programs.

In this capacity, Baron will be responsible for the research programs of the Departments of Applied Science and Nuclear Energy, the Reactor Division, applied programs in other departments, and the technology transfer efforts of the Laboratory.

Baron joined Burns and Roe, an architectural engineering company, in 1950, as a process engineer. He was appointed vice president, engineering, in 1964 and, in 1973, was named vice president of the company's Breeder Reactor Division. In 1975, he was elected senior vice president of Burns and Roe, Inc., and, in 1976, was promoted to senior corporate vice president for engineering and technology. In 1978, he was given additional responsibility as vice president of the Power Technology Division.

The new Associate Director was on site last month and in an interview with the Bulletin noted that, although his 34-year career had been in indus-



Seymour Baron

try, he is quite familiar with the work of the national laboratories. He served on the Board of Trustees of the Argonne Universities Association for seven years. There, his particular review committees included reactor (Continued on page 2)



Brookhaven was host to visitors from West Germany on October 12. Seated with Lab Director Nicholas Samios are Karl-Hans Laermann (left) and Peter von Handel (right). Laermann is professor of static and civil engineering at the University of Wuppertal and a member of the Bundestag in Bonn; von Handel is a member of the DESY directorate. They visited the NSLS and talked about the Heavy Ion Project, in both of which they were particularly interested, and also spent time at the Power Transmission Project and PETT VI. With them was Edwin Laermann (standing, left) and BNL assistant director Jerome Hudis, associate director Paul J. Reardon and Herbert Kinney, special assistant to the Director.

Mort Rosen

### Inside Info

C.V. Krishnan, a research collaborator in the Chemistry Department, has recently been awarded a 1984 Presidential Award for Excellence in Science and Mathematics Teaching. He joins a select group of teachers, one from each state plus the District of Columbia and Puerto Rico, who have been invited to Washington, D.C. the week of October 22 for a ceremony at the White House, a reception and a conference/workshop.

The award carries with it a grant of \$5,000 from the National Science Foundation to East Islip High School, where Krishnan works as a full-time chemistry teacher.

Krishnan has also garnered another

recent honor, the 1984 Nichols Award from the New York Section of the American Chemical Society. The Nichols Award is given annually to an outstanding teacher of high school chemistry.

Krishnan's association with Brookhaven began five years ago, when he started working with BNL chemist Norman Sutin on photoconversion reactions. This past summer, he was selected for a three-year summer fellowship program run by Donald Metz, DAS. In that program, seven high school teachers from Nassau and Suffolk were selected to do summer research at the Lab.

## Give Generously

BNL's 1984-85 United Way Campaign will begin next week with a mailed request from this year's campaign coordinator Cheryl Williams, Instrumentation, to give the United Way. All employees should receive the United Way mailing the week of the 22nd. This year's goal for BNL is \$65,000, an increase of only \$3,400 over last year's donations. BNL's contribution will help support the 130 service agencies belonging to the United Way of Long Island.

Return the pledge card to Betty Pergan, DAS, Bldg. 179A, or to your United Way department representative as soon as possible. "We can reach our goal if only a few more people make contributions for the first time, and if those who have supported the United Way in the past give just a little more generously," says Williams. "You can make a one time or payroll deduction, and your contribution can be earmarked for one particular United Way agency. Though you may already be participating through the United Way payroll deduction plan, you must renew your pledge for 1984-85 by January 1."

#### Department/Division Representatives

Department/Division	Representative	Extension	Mail Drop
AUI	Monique Toler	5175	134A
AGS/Advanced Projects	Harvey Lotko	4689	911A
Applied Math	Ed McFadden	4188	515
Applied Science	Joan Slavinsky	2910	179A
	Catherine Tierney	7121	318
Biology	Nick Alonzo	2364	463
Central Shops	Maureen Tierney	7725	462U
Chemistry	Elaine Rowland	4379	555A
Contracts and Procurement	Joan Lankford	7908	355
Director's Office	Rita Kito	3320	460
Fiscal	Marge Stoeckel	2459	134A
Instrumentation	George Sintchak	4227	535B
Management Info. Systems	Bob Jansson	3306	459
Medical	Joe Cardamone	3569	490
NSLS	Kim Holschuh	5472	725B
Nuclear Energy	Joan Goetschius	2119	197C
Personnel	Chris Hudak	2882	185
Photography & Graphic Arts	Jody Fanizza	2907	197B
Physics	Pat Valli	5377	510A
Plant Engineering	Tom O'Leary	5282	134C
	Patti Bender (IBEW)	4669	452
Reactor	Berthel Becton	2513	703
Safeguards & Emerg. Services	William Sells	3177	50
Safety & Env. Protection	Bob Malachowsky	7717	129
Staff Services	Nick Pisco	2524	179B
Supply & Materiel	Lou DiCarlo	2302	211
	George Dioguardo	2597	211
Technical Information	Linda Thompson	5068	477B

## To Cycle at Night Wear a Light

On October 29, when employees leave work, Eastern Standard Time will be in effect and it will be dark. Most people will travel by car, but some hardy souls will continue to ride their bicycles for the exercise and, for some, bicycles are their only means of transportation.

The Safety and Environmental Protection (S&EP) Division urges cyclists to make sure they are visible at night, and take to heart these safety reminders issued by the Consumer Product Safety Commission:

- Wear reflective clothing to be more visible, such as a reflective vest, reflective bands on the helmet and on the arms and legs.
- Equip the bike with front and rear reflectors, pedal reflectors and side rim or wheel reflectors, together with front and rear lights. Small battery-operated lights strapped to the legs are helpful.
- Always wear a good helmet with a rigid interior.
- Stay away from narrow, dark roadways where the speed limit is higher than 35 miles an hour.

S&EP would go a step further and urge that cyclists stay off the roads after dark. If that is unreasonable then the above precautions should be taken.

New York State law requires that bicycles ridden after dark be equipped at least with front and rear lights and reflectors. If a Laboratory bicycle is used after dark, the user's department or division is responsible for equipping the bicycle with a functioning headlight and clean reflectors. At the Laboratory, a reflective vest, "fanny bumper," or flag may be used instead of a taillight.

## In Memoriam

Frank B. Hill, a senior chemical engineer in the Chemical Sciences Division of the Department of Applied Science, died on October 14 at the age of 60 years. He had been with the Laboratory since September 1, 1954. Hill is survived by his wife, Betty, of Port Jefferson; a son, David, Houston, Texas; and two daughters, Elizabeth, Washington, D. C.; and Kathryn, New York City.

Arthur Humm Jr., who was a health physics associate at the Reactor Division, died on October 15 at Stony Brook Hospital. He was 57 years old. Humm joined the Laboratory on June 27, 1949. He is survived by his wife, Charlotte, a daughter, Patricia Doty and a granddaughter, Jennifer Doty. He was a resident of East Hampton.

## Baron

(Continued)

development, safety, chemical technology and fusion. As his firm's engineering and technology director, Baron has worked with all of the national laboratories on various projects. At BNL, for instance, Burns and Roe did engineering work on the High Intensity Radiation Development Laboratory and on the bubble chambers.

Baron said he would categorize his new job as, "bringing the outside world into the Lab, and the Lab into the outside world." By this, he means to encourage industry to use more Lab facilities, and to get the Lab's "products" out into industry. "Many people here don't realize that their work has outside applications, and I would hope to act as a vehicle for technology transfer," he said.

Another role that Baron sees for himself, is to help both the Applied Science and Nuclear Energy Departments broaden their base of work and develop new projects. In short, said Baron, "to help the Laboratory expand and prosper."

The new associate director is widely traveled. For his firm, he has made three trips to China, alone, this year, and before the year is out, he may go again. Baron doesn't know how much travel will be required of him at BNL, but he expects that he will be making several trips to Washington and, if international work is required, he stands ready.

Baron holds a Ph.D. in chemical engineering from Columbia University. He is a member of the National Academy of Engineering and is active on the Academy's Peer Review Committee. He is a fellow of the American Society of Mechanical Engineers, The American Association for the Advancement of Science, and the American Nuclear Society. He is a member of the National Society of Professional Engineers and served on that Society's Three Mile Island Review Committee. He is a commissioner of the New Jersey Commission on Radiation Protection.

## Equipment Demo

Magnetic Technologies, Inc. will give a product demonstration in Berkner Hall on Monday, October 22, from 10:30 a.m. — 3:30 p.m. They will demonstrate the DEST Workless Station, an optical scanner which automatically scans typed text into an existing word processing system within 15 seconds. It can read 10 pitch, 12 pitch, or proportionally spaced type.



Research associate Robert Hackenburg's car may not be faster than a speeding hyperon, but Hackenburg's 1978 Lincoln Continental can be compared to a hyperon in other ways. Hackenburg, a physicist, dubbed his vehicle Hyperon, and spent the \$20 extra for the personalized license plate, because his car is a heavy weight among automobiles, just as the hyperon is the most massive of the baryons. Baryons are fundamental nuclear particles which include protons and neutrons as well as hyperons. Hackenburg, who works with the Multi Particle Spectrometer group, also named his car to commemorate his work at the AGS.

Alex. Jan

# BROOKHAVEN BULLETIN

Published weekly for the employees of BROOKHAVEN NATIONAL LABORATORY

**BERNICE PETERSEN**, Editor  
**MONA S. ROWE**, Associate Editor  
**ANITA COHEN**, Reporter  
**MARSHA BELFORD**, Reporter

35 BROOKHAVEN AVE., UPTON, N.Y. 11973  
 Telephone (516)282-2345

## Concert Season Opens Oct. 30

The first concert of the 1984-85 Concert Series features violinist Young Uck Kim, who will perform on Tuesday, October 30, at 8:30 p.m. in Berkner Hall.

Over the last two decades, Young Uck Kim has built a formidable reputation on four continents. He has been a soloist with the world's major orchestras, including the Berlin Philharmonic, Concertgebouw Orchestra of Amsterdam, London Philharmonic, Zurich Tonhalle, Philadelphia Orchestra, New York Philharmonic and Pittsburgh Symphony. He has performed in such festivals as Salzburg, Spoleto and Marlboro. With the Ax-Kim-Ma Trio, he has appeared at Lincoln Center in the Great Performers Series and with the Chamber Music Society of Lincoln Center.

Mr. Kim's program on October 30 will feature Sonata in G Major, K. 301, by Mozart; Fantaisie by Schoenberg, Sonata in A Major, Op. 13, by Fauré; and Sonata No. 7 in C Minor, Op. 30, No. 2, by Beethoven. Pianist Staffan Scheja will be the accompanist.

Tickets for the concert are \$8, general admission; \$5, students and those over 65; and \$3 for those under 18. In addition to Mr. Kim's performance, four other concerts are scheduled in the 1984-85 Concert Series. Block tickets, good at any concert, can be purchased at a much reduced price of \$28 for the first five tickets and \$5 for each additional ticket.

Tickets will be sold at the door on the night of each performance. They can also be purchased in advance from the following:

	Bldg.	Ext.
Arnold Aronson	475B	2606
Clemens Auerbach	197D	2914
Howard Gordon	510A	3740
Geoffrey Hind	463	3400
Richard Holroyd	555A	4329
Blanche Laskee	185	2873
Donald Lazarus	911B	4643
Myron Ledbetter	463	3418
Benjamin Magurno	197D	5207
Edwin Popenoe	490	3622
Stephen Schwartz	426	3100
T. Laurence Trueman	510A	3767

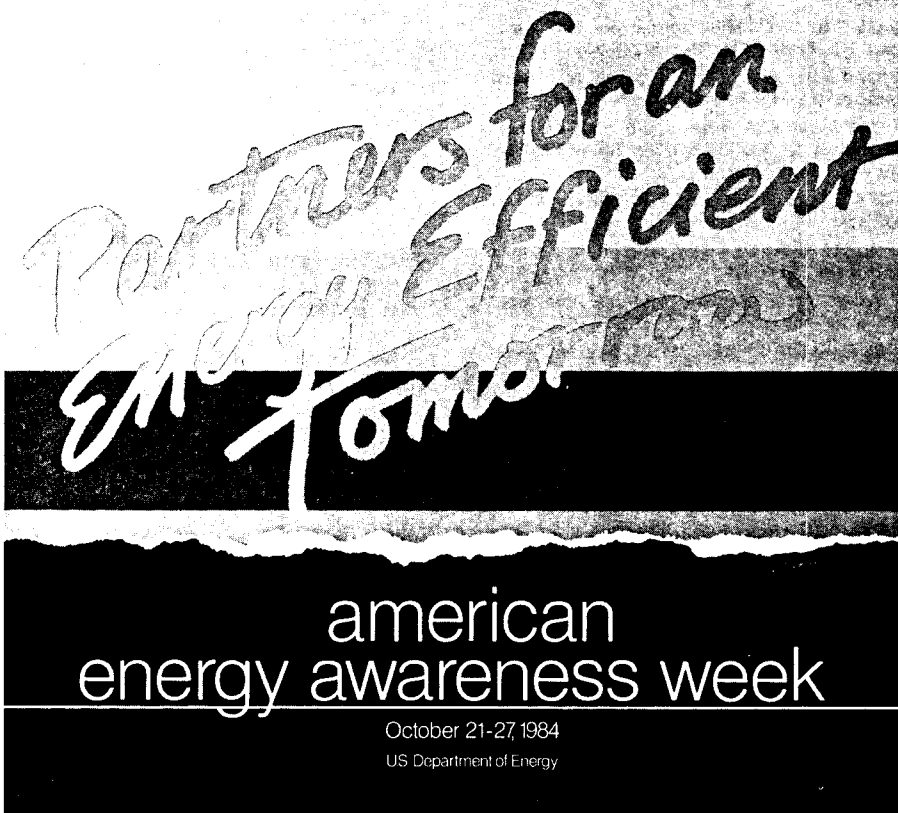
## CREF Values

October	65.95	November	67.06
December	66.84	January	66.50
February	64.21	March	65.37
April	65.34	May	60.81
June	61.71	July	60.35
August	66.91		
September \$66.75			

## IBEW Meeting

Local 2230, IBEW, will hold its regular monthly meeting on Thursday, October 25, at 6 p.m. in the Knights of Columbus Hall, Railroad Avenue, Patchogue. There will also be an afternoon meeting at 2 p.m. for shift workers in the Union office at 31 Oak Street, Patchogue. On the agenda will be regular business, committee reports and the president's report.

## In-house Energy Management and You



As the poster proclaims, next week, October 21-27, is American Energy Awareness week. It's a good time for employees to begin thinking about energy conservation in the coming winter months. Here at the Lab, just as it is in your home, saving energy is up to you. Two specific reminders: thermostats should be set to 65°F during the day and 55°F at night, and storm windows should be lowered. If you have a problem with your storm window, call Plant Engineering at Ext. 2468. Energy saving ideas are always welcome; contact Ken Testa, Ext. 3263.

## AMD Courses

### Introduction to TEX

Six 1-hour sessions, 1:30 - 2:30 p.m., Tues. and Thurs., Oct. 30 through Nov. 15, AMD Seminar Room, Bldg. 515.

### The C Programming Language for Programmers

Six 1-hour sessions, 9 - 10 a.m., Mon., Wed. and Fri., Oct. 29 through Nov. 9, AMD Seminar Room, Bldg. 515.

For more information or to register for either course, call Ronald Wittlock at Ext. 4112.

## NY City Trips

The Hospitality Committee is planning two group railroad trips to the city in the next two weeks. One is a special on Saturday, October 27, leaving at 8:31 a.m. Round-trip fare is \$6.50. The second is a regularly scheduled trip on Wednesday, October 31, leaving at 7:55 a.m. The round-trip fare is \$5. Children under five ride free on both trips. All departures are made from the Patchogue LIRR station.

To reserve a ticket, send your fare through the U.S. mail to BNL, P.O. Box 322, Upton, New York 11973. Checks or money orders should be made payable to BNL. Do not send cash. Put the date of the trip, your telephone number and BNL life number on the check. Tickets will be given to you on the train.

Fares for both trips must be received no later than Thursday, October 25. Refunds will be made only if cancellations are received by the Monday morning preceding the trip.

Scheduled trips for the remainder of 1984 are as follows:

Wednesdays	Saturdays
Oct. 31	Oct. 27
Nov. 7, 21	Nov. 17, 24
Dec. 5, 19	Dec. 8, 15

## Arrivals & Departures

### Arrivals

Armin Pfoh ..... Physics

### Departures

This list includes all employees who have terminated from the Laboratory, including retirees:

Raymond Davis, Jr. .... Chemistry  
 Tex L. Horning ..... DAS  
 Donna Marie R. Kennell ..... C&P  
 Daphne V. Fitzhugh ..... Medical

## Cafeteria Menu

### Week Ending October 26

<b>Monday, October 22</b>	
French onion soup w/croutons	(cup) .65
	(bowl) .85
Southern fried chicken w/1 veg. & cranberry sauce	2.10
Western omelet w/French fries	2.00
Hot Deli — Baked ham & Swiss	(bread) 2.00
	(roll) 2.15
<b>Tuesday, October 23</b>	
Cream of broccoli soup	(cup) .65
	(bowl) .85
Taco platter & 1 veg.	2.00
American chop suey over rice	2.05
Hot Deli — Chicken patty club	(bread) 2.15
	(roll) 2.30
<b>Wednesday, October 24</b>	
Vegetable beef soup	(cup) .65
	(bowl) .85
Roast pork loin w/apple & 1 veg.	2.15
Baked meatloaf & 1 veg.	2.00
Hot Deli — Corned beef	(bread) 2.00
	(roll) 2.15
<b>Thursday, October 25</b>	
Split pea soup	(cup) .65
	(bowl) .85
Ham & potato au gratin & 1 veg.	2.05
Spaghetti special w/meat sauce & garlic bread	2.20
"All You Can Eat"	
No take outs on special*	
Hot Deli — Philadelphia steak w/peppers & onions	(bread) 2.05
	(roll) 2.20
<b>Friday, October 26</b>	
Boston clam chowder	(cup) .65
	(bowl) .85
Old fashioned beef stew w/baking powder biscuit over egg noodle	2.10
Macaroni & cheese & 1 veg.	1.95
Hot Deli — French bread pizza	2.05

## —BERA News—

### Indoor Tennis

Sign-up for indoor tennis in the gymnasium will begin on Friday, October 19. The gym is available for tennis 5 p.m.-9:30 p.m. on Tuesdays, and 1 p.m.-5:30 p.m. on Sundays.

Reservations can be made in person at the BERA Sales Office in the cafeteria between noon and 1 p.m. on Monday for play the next day, and between noon and 1 p.m. on Friday for play the following Sunday.

Players are reminded that they are limited to one hour of court time per week for singles or two hours each per week for doubles.

### Cooking Exchange

"Squash for All Seasons" will be the theme of the next meeting of the Cooking Exchange on Wednesday, October 29. Dishes such as butternut pecan pie and pumpkin soup will be prepared.

The Cooking Exchange is open to all employees and members of their immediate families. Meetings are held in the Recreation Building on the second and fourth Wednesdays of each month from 12:30 to 2:30 p.m. A \$1 donation entitles each attendee to a copy of the day's recipes, generous taste-samples of the prepared dishes, and coffee or tea. Babysitting is provided at 50¢ for each child.

Contact Ellen Jacobson, 744-3578, with any questions regarding the Cooking Exchange.

### Rifle and Pistol Club

The BNL Rifle and Pistol Club is currently holding informal trapshooting events on a weekly basis at the club's on-site range. Anyone interested in participating is invited to call Tom Nepsee at Ext. 2613 for further information.

### Bowling

#### Red/Green League

High games were bowled by Joe Ferrante 234, Hank Arnesen 210, George Meinken 206/206.

#### Purple League

Jim Roesler rolled a 215, Tony Natoli 213, Bob Bergoffen 210, Pat Manzella 189/182/517 series, Nancy Erickson 187, Valerie Green 184.

#### White League

Paul Callegari had games of 244/202 for a 618 scratch series, Ben Belligan 225, Ed Sperry 218, Steve Gushue 211, Caryl MacDougall 219/571 scratch series, Sharon Smith 214, Millie Connolly 186, Kay Conkling 180.

## WIS Reminder

Don't forget the WIS Wine and Cheese Party, Wednesday, October 24, 4 p.m. to 6 p.m. at the Recreation Hall. All members, please attend and invite your colleagues!

## MICOM Meeting

The next meeting of the MICOM Users' Group will be Wednesday, October 24, at 2 p.m. for new users in Conference Room 2-160 of Bldg. 510A (Physics). Ruth Stannish, MICOM representative, will be present, and the topic will be footnotes and tables, headers and footers. At 3 p.m., the topic for experienced users will be communications. Stannish will give a demonstration on talking to another MICOM or the VAX computer. For further details, call Isabelle Harrity, Ext. 3727, or June Martino, Ext. 2933.

## Classified Advertisements

### Placement Notices

The Laboratory's placement policy is to select the best-qualified candidate for an available position, with consideration given to candidates in the following order of priority: (1) present employees within the department, with preference to those within the immediate work group; (2) present employees within the Laboratory as a whole; and (3) outside applicants. In keeping with the Affirmative Action plan, selection decisions are made without regard to age, race, color, religion, national origin, sex, handicap or veteran status.

Each week, the Personnel Office lists new personnel placement requisitions. The purpose of these listings is, first, to provide open placement information on all non-scientific staff positions; second, to give employees an opportunity to request consideration for themselves through Personnel; and, finally, for general recruiting purposes. Because of the priority preference policy stated above, each listing does not necessarily represent an opportunity for all candidates. As a guide to readers, the listings are grouped according to the anticipated area of recruitment.

Except when operational needs require otherwise, positions will remain open for one week following publication date.

For further information regarding a placement listing, contact the Personnel Placement Supervisor, Ext. 2882.

**LABORATORY RECRUITMENT** - Opportunities for Laboratory employees.

2127 MAIL CLERK - Staff Services Division.

**OPEN RECRUITMENT** - Opportunities for Laboratory employees and outside applicants.

2128 MECHANICAL DESIGN POSITION - Requires extensive experience in design/drafting relating to mechanical structures and devices used in experimental physics. Responsibilities include independent design work and detailing from layout/assembly of others. Will provide checking function and will ascertain conformity to applicable quality assurance standards. Requires BS degree or equivalent working experience. Physics Department.

2129 PROJECT ENGINEER - Requires BS degree in nuclear or electrical engineering or equivalent. Will be responsible for the development and implementation of reactor modifications and projects, utilizing DOE procedures for quality assurance within a research reactor and for providing engineering support for the HFBR and MRR. Familiarity with reactor operations is desirable. Reactor Division.

### Autos & Auto Supplies

TIRES - on G.M. truck rims. very good cond., \$20 ea., 15" Caddy rims, \$15/pr.; trailer hitch frame, mounted, \$80. 269-9510 after 7 p.m.

66 FORD FALCON - many new parts, \$200. 744-8279.

78 KZ400 MOTORCYCLE - recent tires, chain, sprockets & Die Hard, low mi., well maint., asking \$750. 281-0360 after 6 p.m.

77 MUSTANG COBRA II - 4 spd., 302, p/s, p/b, am/fm, good cond. in & out, 89,000 mi., \$2,300. Tony, Ext. 7543.

78 MAZDA - stick shift, excel. cond., asking \$2,500 or best offer. 727-0378 after 6 p.m.

75 OPEL MANTA - needs some exhaust work, good car, \$700. Mike, Ext. 7595 or 325-1711.

77 PLYMOUTH VOLARE - runs well, \$1,250 firm. 281-4871.

73 MERCURY MONTEGO - 4 dr., runs well, 68,000 orig. mi., \$950. Peter Eterno, Ext. 4167.

TIRES - (1) ER78-14, G78-14, \$ ea. Ext. 7505.

82 SUZUKI DIRT BIKE - RM125, mint cond., used wknds., w/equip., water cooled, \$800 firm. John, 281-3342 after 6 p.m.

79 FORD FAIRMONT - 4 dr., a/c, p/b, p/s, must sell, \$2,500. Ext. 3637.

82 MAZDA - RX7-GS, orig. owner, 21,000 mi., sunroof, am/fm cassette, asking \$9,400. 727-8269 after 6 p.m. or weekends.

76 HONDA CIVIC CVCC - 4 spd., good cond., 30-35 mpg, \$900. Joe, Ext. 5131 or 929-4425.

71 FORD PINTO - new starter, brakes, alternator, runs well, \$400. 878-4304 after 5 p.m.

AUTO STEREO SPEAKERS - brand new, 6"x9", 2-way, \$25. Willie, Ext. 4489.

72 MAVERICK - low mi., runs well, new brakes, exhaust, \$350. Devinder, Ext. 4985.

79 CHEVY MONZA - 4 spd., V6, p/b, p/s, a/c, am/fm stereo, new tires. 878-0012.

73 PLYMOUTH FURY - good running condition, \$450. Ext. 4407 or 3775.

78 HONDA ACCORD LX - hatchback, p/s, p/b, a/c, 5 spd., am/fm stereo, new exhaust & brakes, \$3,200. 422-1846 after 7 p.m.

79 TOYOTA CELICA GT - hatchback, a/t, a/c, p/s, low mi., good inside & out, \$3,900. Mark, 286-4150.

81 TOYOTA CORONA - like new, garaged, low highway mi., a/c. 4 speaker stereo, p/s, \$6,800. D. Hardy, Ext. 3389.

81 CAMARO - a/t, p/s, p/b, V6, am/fm stereo cassette, T-tops, 21,000 mi., sport mirrors, Rally wheels, excel cond. Ext. 5182.

72 MERCURY - excel. cond., a/t, a/c, p/s, p/b, radio. \$400. Gil, Ext. 7697 or 928-8623.

78 T-BIRD - a/t, a/c, p/s, power windows, am/fm stereo, sport panel, vinyl roof, front buckets, excel. cond., \$3,500 neg. 878-6822.

77 MONZA - hatchback, red & black, running cond., \$500. 727-4075 after 6 p.m.

71 DODGE DART - V8, p/b, p/s, a/c, excel. running cond., \$599 neg. Ext. 4935 or 928-5737 eves.

78 T-BIRD - a/t, p/s, power windows & locks, V8, 50,000 mi., \$4,000. Eric, 669-1557.

77 OSSA - 350cc, white, good cond., \$600. Tony, Ext. 4605.

75 PACER - 6 cyl., a/t, p/s, p/b, good cond., am/fm, asking \$850. 654-9340.

DUNE BUGGY - w/Porsche motor, all new parts, show quality. 669-2526.

81 MAZDA GLC - hatchback, stick, am/fm, radials, 35 mpg, excel., \$3,100 neg. Ext. 7676 or 673-1959.

76 DATSUN 280Z - orig. owner, \$3,800. Ext. 4867.

78 OLDSMOBILE CUTLASS - 8 cyl., 4 dr., p/s, p/b, a/c, clean in & out, low mi., \$3,600. Katherine, 281-8021.

79 GMC JIMMY - H.S., am/fm, p/s, p/b, excel. cond. T.D. Fraser, Ext. 2043 or 286-3317.

77 DATSUN 280Z - am/fm stereo, a/c, excel. cond., asking \$4,900. 744-4855 after 5 p.m.

71 CHEVY IMPALA - a/t, a/c, p/b, p/s, 82,000 mi., good cond., \$1,000. Ext. 2673 or 744-8632 after 6 p.m.

TIRES - (2) Pirelli-P3, 175SR-14, low mi., \$75.00. Ext. 2253.

72 DUSTER PARTS - 6 cyl. eng., right fender & windshield. 727-3608.

77 YAMAHA 500 - low mi., off road, street legal, \$600. 286-2289.

81 SUZUKI DIRT BIKE - RM125, Boysem Reeds, boost bottle, excel. cond., \$650. 929-8287.

76 AMC GREMLIN - good cond., \$500. Ext. 4250 or 331-9017.

77 PONTIAC ASTRE - 2 dr., 4 cyl., \$725. 331-1718.

73 OLDSMOBILE - good running cond., \$700. Ext. 2058.

70 CAMARO - Rally Sport, 80 eng. & trans., new tires, radiator & more, needs body work. 744-4288.

74 FORD PINTO - 2 dr., runs well, needs minor work, \$150. Ted Erickson, Ext. 2243.

77 TOYOTA COROLLA - very good cond., new brakes, tires, alternator, clutch & battery, \$1950. Ext. 4768 or Ext. 2512 after 6 p.m.

79 SUBARU BRAT PICKUP - 4 wheel, am/fm cassette, radials, new brakes, excel. cond., 69,000 mi., \$2,800. 878-6274 after 6 p.m.

80 CHEVETTE - orig. owner, a/c, a/t, am/fm, 4 dr., low mi., excel. cond.; (5) 13" tires, P-15580, \$40. 735-1144.

68 OLDS CUTLASS -not running, good car for mechanic to restore, \$250. 654-5012 before 3 p.m.

### Boats & Marine Supplies

16' RUNABOUT - fiberglass, full windshield, r/stearing, 40 HP Johnson, electric start, trailer, \$750. John, Ext. 5152 or 281-2471.

DEPTH FINDER - SI-TEX SH-1 w/transducer, new, asking \$100 was \$169. Rick, Ext. 7585.

17' CANOE - Grumman, excel. cond., \$300. Rick, Ext. 7585 or 654-3665.

21' RENKEN - 1979, 120 HP Volvo Penta I/O, low hrs., fully equipped cuddy, excel. cond., \$6,000. Rick, Ext. 7585.

27' REVELCRAFT - wood, V8, sleeps 4, in water, good cond., can demo., \$1,200. Frank, Ext. 2022 or 399-4480.

16' POINT JUDE SAILBOAT - fiberglass sloop, anchor, trailer, best offer over \$1,000. Tom, 744-5709.

17' THOMPSON - 1975, 135 HP rebuilt O/B, used only 3 seasons, trailer, \$4,700 or best offer. 744-4855 after 5 p.m.

18' MARQUIS - 1979, open-bow, 85 HP Johnson w/power-trim, full equip., canvassed, excel. cond., orig. owner, in water, asking \$5,300. Arnie, Ext. 2040 or 281-1870.

24' SEA RAY - 1978, flying bridge, 250 omc, will demo, excel. cond., \$16,400. Richie, Ext. 3815 or 924-5329.

30' PACEMAKER CABIN CRUISER - 1962, 1976 FWC 270 HP, excel. cond., make offer. 289-0012.

### Miscellaneous

STORAGE CABINET - on wheels, wood, desk-like w/2 wide doors, \$25. Al, Ext. 2160 or 273-5574 after 4 p.m.

COMPLETE STONE TUMBLER - used twice, \$40; World War II helmets, daggers, life size wood sculptures, 281-6944.

TRUMPET - used 6 mos., excel. cond., asking \$200. Ext. 7672 or 727-1667.

KEROSENE DRUMS - 55 gals, \$10 ea. Ext. 7505.

REFRIGERATOR - Westinghouse, self-defrost, in good cond., \$275; Atari 2600 w/8 tapes, asking \$125. 399-4822.

WOMAN'S BIKE - 26", needs tires, \$10. Nate, Ext. 3572.

SKI BOOTS - Raichle, size 8-8 1/2", never used, list price, \$130, sale price \$65. Ext. 3164.

GREEN HOUSE MATERIALS - 46"x66" tempered glass, aluminum battens for frame. Ext. 2081 or 878-9384.

HICKOK OSCILLOSCOPE - Model 670 w/manual, \$15 or best offer; stainless steel stove hood, \$15. Victor, Ext. 2395.

COLLECTOR'S PEWTER SPOONS - (13) original colonies, heavy embossing w/pine rack, must see, \$100. 878-0945.

DINING ROOM CHAIRS - (3) old mission oak, \$60; old mahogany coat rack, \$20; desk, \$40; dresser, \$25. 878-6637.

SKI EQUIPMENT - Kneissl skis & poles, 175 Tyrolia bindings, men's Munaki boots, 8-1/2-9-1/2, excel. cond., \$200. 286-4018.

CANADIAN HEMLOCKS - Tsuga-canadensis, field grown, 3', \$8 ea. 589-4363 after 6 p.m.

DINING ROOM SET - rectangular table w/leaf, 4 chairs, buffet, china closet, blonde wopd, moving must sell, \$250. 669-9482.

TENNIS RACKET - Davis classic, gut strings w/press, \$30. Georgia, Ext. 2342.

BRASS TABLE LAMP - colonial, Glass amber shade, 3-way switch, like new, \$45. 878-0945.

PHONO CARTIDGE - Astatic MF 200H, \$35; stylus, \$45, very transparent. Rick, Ext. 7178.

HANDMADE CABBAGE PATCH CLOTHING - under \$10, place Xmas orders early. 281-7722 between 10 a.m. & 1 p.m.

PORTABLE WASHING MACHINE - Sanyo, brand new, 3 wash cycles, \$250. Peter Eterno, Ext. 4167.

OVERHEAD GARAGE DOORS - (2) Brady, 8'Wx7'H, you pick up, \$50; stainless steel sink, 25"Wx22"D. 286-8807.

NIKON CAMERA - E300, plus Hanamex automatic flasher, hardly used, \$150. Pete, Ext. 3397.

JUNIOR SKI PACKAGE - Rossignol EquipeI skis, 140cm, saloman bindings & poles, excel. cond., \$75. Ext. 4449 or 751-8403 after 6 p.m.

SINGER TREADLE SEWING MACHINE - antique, inclosed walnut cabinet, \$65. 744-5317.

COCKER SPANIELS - black & white, papers, 5 weeks old, \$200. Tony, Ext. 4605.

G.E. DRYER - electric, works great, \$40. Rich Bernier, Ext. 4167.

FURNITURE - living room & dining room furniture, accessories, fine cond., moving, cheap. 593-6167 mornings or eves.

GARDEN TRACTOR - Sears, 10 HP, 1980, blade, mower, spreader, engine needs work, \$350 neg. Ext. 7676 or 673-1959.

DINING ROOM TABLE - walnut, 58"x40", w/2 leaves, 4 matching chairs, excel. cond. Ext. 4449 or 751-8403 after 6 p.m.

COMMERCIAL MOTORS - (2) 5 HP, 3 phase. 289-0967.

QUILTED BEDSPREAD - red, white & blue for twin size bed, like new, \$15. Les, Ext. 2920.

MAN'S BIKE - Raleigh Sprite, 21-1/2", 10 spd., still in box, \$125. Janet, Ext. 2345 or 929-4688.

GIBSON UPRIGHT FREEZER - 19 cu.ft., excel. cond., \$100. Don, Ext. 2043.

JEWELRY & GIFT ITEMS - Adrienne, 286-8424.

TRUMPET - Bach/Stradivarius, \$375; coronet, olds/Ambassador, \$125. Jim, Ext. 3372.

G.E. CHEST FREEZER - 12 cu.ft., brown, excel. working order, \$100. Linda, 286-1268 days or eves.

OFFICE DESK - all metal w/typing table, \$25. 744-9677.

HANGING LAMPS - (2) pentagonal, bulbs incl., no ceiling plate, amber glass, \$20 ea. Ext. 2905 or 281-8306 after 5:30 p.m.

PVC DARKROOM SINK - 72"x22", splash board, print drying racks, cabinet underneath, excel. cond., \$250. 698-0234.

UNICEF XMAS CARDS & GIFTS - for info. or order. Ann, Ext. 2022 lunchtime or 744-8386 eves.

X-COUNTRY SKIS - Nordic Kneissl, poles, boots, women's size 40 (8-1/2), waxes, \$50. Bonnie, 878-8113.

COLONIAL COUCH - 2 piece, 9' long, Herculon, excel. cond., \$115. 929-8287.

MARANTZ SPEAKERS - (2) 20 watt, \$35; TV antenna, 24 element mountings, cable, new, orig. cost \$70, sell for best offer. Ext. 3067.

WOMAN'S FUR COAT - lamb, off white, size M/L, \$75. Linda, Ext. 7745.

CHILD'S PHONOGRAPH - very good cond., \$15. 751-3551.

DUCK DECOY - black duck, never used, 12 decoys, \$30. Ext. 5609.

PERFECT WRITER - speller & calc. for MS-DOS or IBM PC's, original disks & documentation, \$100. Dick, Ext. 2911.

SKIS - Rosignol, 150cm & poles, \$50; assorted ski boots, sizes 6-1/2-9, \$10 ea. Jack, Ext. 4054.

MAN'S BIKE - Ross, 10 spd., like new, \$200. 289-7879 or 289-0967 after 6 p.m.

INDO-PERSIAN RUG - 9'x12', hand knotted, excel. quality, tight weave, almost new, bge/red/blue, \$2,450 or best offer. 331-5912 eves.

G.E. WASHER - old, but functional, \$50. Culwick, 744-5892.

DINING ROOM SET - mahogany table, 3 leaves, pads, 6 chairs & hutch. 732-3105.

BRAIDED RUG - green & white, 8-1/2'x5-1/2'; wooden swivel desk chair, captain's type; adult crutches. Ray, Ext. 7509.

WALL UNIT - teak veneer front, black sides, w/drop-lid desk, 3 drawers, 3 shelves, \$100. Peter, Ext. 3535.

PORCH WINDOW PANELS - (9) & door for enclosed porch, make offer. Don Borg, Ext. 3625 or 286-0428.

BEDROOM SET - Danish modern, highboy, triple dresser, king size headboard, \$200. Karen, 286-0428.

SWAGLAMP - 16", brown wicker shade, \$30; quartz heater, \$30; Zenith B&W TV, \$25. 744-6874.

EXTENSION LADDER - 40', wood, excel. cond., kept indoors, \$60. Tony, Ext. 4084 or 878-1060.

UPRIGHT FREEZER - 19 cu.ft., \$50; Kerosun Omni 105 keroheater, \$30; 40 CH base CB, digital, like new, \$50. Harry, Ext. 7578.

### Car Pools

E. NORTHPORT/COMMACK - 4 driver pool looking for 5th driver. Paul, Ext. 4156.

PATCHOGUE VANPOOL - seat open on Patchogue trans. van. Ext. 4669 leave name & Ext.

NORTHPORT/FT. SALONGA - need 4th person for on-time pool, 8:30-5:00 p.m., door to door. Walter, Ext. 4986 or 757-5478.

SHOREHAM - form or join carpool. Peter, Ext. 3297 or 821-9547.

BAYPORT - rider/driver to fill existing car pool. Ext. 4159/4085 or 2408, beeper 460.

QUEENS - existing carpool, 2 or 3 more drivers needed, meet Little Neck Pkwy. Ext. 3606.

### Yard Sale

SHOREHAM - 177 Randall Rd., 1 mi. south of 25A, Peerless Photo, Oct. 21, 9-4 p.m.

### Real Estate

Real Estate advertised for sale or rent is available without regard for the race, color, creed or national origin of the applicant.

### For Sale

ST. JAMES - 4 bdrm. Cape, mint, 3 baths, finished basement, 1/4 acre, low taxes, Smithtown school, owner anxious, \$114,990. Ext. 5061 or 862-6650 eves.

NORTH PATCHOGUE - 60 x 100 lot, near North Ocean Ave. & LIE, Sachem School District, level w/nice trees. Ext. 3392.

SHIRLEY - Tangiers Section, 3 bdrm. ranch, finished basement, fenced, many extras, assumable mort. 7-1/2%, must see. Ext. 2021 or 281-7240.

CORAM - Birchwood at Bretton Woods, condo., Dalton model, 3 bdms., den, formal d/r, 1-1/2 baths, gas heat, central air, patio, 1/2 block to clubhouse. 698-0234.

MILLER PLACE - 4 bdrm. Colonial, formal l/r & d/r, country kitchen, fam. room w/brick wall l/p. \$158,000. 331-1718.

### For Rent

MIDDLE ISLAND - (2) single bedrooms, share kitchen & bath, gentlemen preferred. 698-4895.

MILLER PLACE - 1 bdrm., l/r, kitchen, bath, private ent., util. incl., avail. Oct. 15. Ext. 2537 or 473-1658 after 5:30 p.m.

E. PATCHOGUE - LaBonne Vie Apts., 4 rooms, close to Lab, Jan. 1st (or before) occupancy. Robin, Ext. 3872.

VILLAGE OF PATCHOGUE - studio apt., private ent., security, util. incl. 289-0967 after 6 p.m.

PORT JEFFERSON STATION - Heatherwood apt., 1 bdrm., full bath, l/r & eik, unburn., util. incl. except electric. 928-9075 after 8 p.m.

MASTIC PARK - compact 1 bdrm. apt., \$275 plus electric, security, references, suitable single. 281-7844 eves.

WADING RIVER - lovely 3 bdrm. house on wooded acres, 2 baths, l/r, d/r, eik, sundeck, finished bdrm., 2 car garage, appliances, 10 min. to Lab, SWR schools, avail. early Dec. Shine, EXT. 4391/4396 or 4563 or 751-8224 after 6 p.m.

ROCKY POINT - private, 1-1/2 bdrms., basement, garage, 1/2 mi. to beach/shopping, 2 mo. security, \$600 & util. 289-0012.

GORDON HEIGHTS - newly renovated, furn./unfurn., 1 bdrm. apt., private, many extras, ideal for working single/couple, no children/pets, \$550 includes all. 698-1362 after 5:30 p.m. or wknds.

VERMONT HOUSE - reasonable vacation, 3 bdms., 2 baths, f/p, fully equipped, beautiful view, X-country & downhill skiing, family oriented, avail. weekly or wknds. 732-6499 after 6 p.m.

BELLPORT VILLAGE - room for professional woman, 1 mo. security, references. 286-1714.

ROCKY POINT - 2 bdrms., private, quiet, unfurn; available Dec. 1. Sheldon, Ext. 4986.

ROCKY POINT - 2 bdrm. apt. avail. Nov. 1, \$500 + util. Tom, Ext. 4819.

### Free

HAMSTERS - John, 924-6809 after 5 p.m.

DOGS - male, neutered, black Lab., female, spayed spaniel, great w/kids, housebroken, owner allergic. Chip, Ext. 2256.

LOVE SEATS - 2 w/wheels, leather, good cond. 744-5871.

### Wanted

FORD ENGINE - 240 C.I., 6 cyl., std., in good running cond. Bill Sanchez, Ext. 3848 or 281-6498.

LAWN CHAIRS - wicker or Adirondack style, to borrow for Nov. production of "Morning's at Seven." Penny, Ext. 5154.

CLEANING WOMAN - twice a week for physicist living on site. Ext. 3790.

BABYSITTING - experienced 16 yr. old babysitter will sit after 3 p.m., your home. 399-3381.

SNOW TIRES - G78x15 or equiv.; also 1