

A Visitor's View

Leon Van Hove, Theoretical Physicist



Leon Van Hove

—Roger Stoutenburgh

"I felt quite honored to have this invitation, as the first Leland J. Haworth Distinguished Scientist, a kind of visiting scientist position of a somewhat unusual type," said theoretical physicist Leon Van Hove, who reflected on this experience last Thursday, November 8, as his two-week stay at Brookhaven drew to a close.

In accepting the appointment, Van Hove agreed to spend from one to three weeks a year, for three consecutive years, in residence at BNL. In addition to presenting four talks during this year's visit, he was asked to meet with various groups. "They arranged a rather unusual way of doing that, which turned out to be extremely effective," said Van Hove. "Every day, at lunch and at dinner, I met with other scientists in a very relaxed atmosphere. Then we made appointments to discuss things more specifically

and to visit experiments.

"This was one of the really pleasant aspects of my time here," he continued. "I am among that old school of physicists who are somewhat less specialized, perhaps, than the younger generation, in the sense that I've worked in a variety of domains of physics. And I greatly enjoyed this opportunity to talk to people who do different things in physics. I found it, intellectually, a very stimulating visit."

At the end of his visit, Van Hove returned to CERN, the European center for physics research. He has been at CERN since 1960, serving as the laboratory's research director general for five years before returning to the theoretical physics division in 1981. There, his present research domain includes the theory behind the creation of a possible new state of matter, known as a quark-gluon plasma (see

box). As Van Hove explained it, this work involves "the rather concrete things that you might encounter when you try to make plasma, and also the more theoretical aspects of field theories at positive temperatures."

Various aspects of these considerations were the subjects of the four addresses Van Hove presented during his stay, in the form of a physics colloquium, two informal seminars and one lab-wide lecture. His discussions of experimentation with relativistic heavy ions were of particular interest at BNL. Last month, ground was broken for a transfer line that will link the Tandem Van de Graaff accelerator, which will supply ion beams (up to sulfur), with the Alternating Gradient Synchrotron (AGS), where beams of ions will be accelerated to about 15 GeV per nucleon (1 GeV = (Continued on page 2)

Measuring Human Iron Stores

Some people have "iron-poor blood" for which they take one-a-day iron supplements. However, an unfortunate few, afflicted with such disorders as thalassemia, chronic anemia and kidney failure, are overloaded with iron as a result of the regular transfusions they receive as treatment. These people accumulate 50 to 100 times the amount of iron normally found in the liver and 10 to 15 times more iron in the heart than normal.

Since human beings cannot eliminate all the extra iron taken in, these patients store the excess iron in their blood, liver, heart, kidneys and other organs. Increases in total iron stores in the body can lead to iron toxicity. This causes cellular damage in all organs, abnormalities in the heart, liver and endocrine systems, and can contribute to an untimely death.

To combat iron overloading, these patients are treated with chelating drugs which bind with excess iron in the soft tissues to form harmless compounds. These iron compounds are then excreted by the body.

Medical science does not know whether the extra iron in the liver or heart replenishes the excess-iron pool after its iron is removed through chelation. And it is also not known whether chelation of the excess iron reduces the malfunctioning of the liver and heart.

Associate physicist Lucian Wielopolski, Medical, is using a nuclear resonance scattering (NRS) system to answer these unknowns about chelation therapy. "Our specially designed NRS system is being used in the present study to non-invasively measure the iron stores of the liver and heart," says Wielopolski. "Our aim is to evaluate the efficacy of chelation therapy for patients with iron overloads and to examine the redistribution of iron following chelation therapy, if any."

At present, iron-overloaded patients undergo blood tests and biopsies for measurement of the excessive accumulation of iron in their blood and organs. However, whether the results from the clinical tests performed with these patients' blood reflect the total body burden of iron is under question. The surgical removal of liver tissue can be an undue risk to these patients because of their inability to stop bleeding and heal properly, and biopsy of heart tissue is not performed.

"Because NRS directly measures

the effectiveness of iron removal by chelating agents *in vivo*, we can more accurately adjust a patient's dosage of a chelating drug over time," explains Wielopolski. "We are using it as a research tool to establish a regulated course of chelation therapy which will safely and effectively remove excess iron from the body." The



Lucian Wielopolski

—Roger Stoutenburgh

iron index obtained from NRS measurements of the liver and heart indicates their iron burden.

To make the NRS measurements of their iron stores, a patient is exposed to the gamma ray source manganese-56 (⁵⁶Mn). To make this radioactive source, manganese-55 is irradiated in BNL's High Flux Beam Reactor for four hours, during which time it absorbs one neutron per nucleus to become ⁵⁶Mn. The source is placed under a treatment gurney in a shielded container which directs the gamma rays to the liver or heart. Exposure to the gamma rays lasts 30 minutes. The dose delivered to the skin is about one rad, and the dose absorbed by the heart or liver is smaller due to absorption by the overlying tissues.

Two large germanium detectors count the gamma rays from the source that collide with the iron in the patient's liver or heart and resonantly scatter. Since the intensity of the detected gamma rays is proportional to the number of iron nuclei present in the heart or liver, how much iron is in the organ at a specific time is measured. The change in the amount of iron in the organ over time can be calculated from serial measurements.

Wielopolski made the first measurements using his NRS system in 1981.

In 1982, he began serial measurements of the liver and heart on 20 consenting patients of pediatrician Richard Acona of Stony Brook University Hospital and nephrologist Robert Mossey of North Shore University Hospital, Manhasset. After a year to 18 months of chelation therapy, the patients' liver and heart iron burdens are again being measured, and the changes in the amount of iron in the organs are being calculated.

"The number of NRS measurements per patient to date indicate that the excess iron in the liver decreases over time due to chelation therapy," says Wielopolski, "but the data needs further evaluation. Our limited data regarding heart iron is so far inconclusive."

The Cooley's Anemia Foundation recently awarded Wielopolski a grant

to continue NRS serial measurements on thalassemic patients at regular intervals. This funding will allow him to complete the second serial measurements, perform third measurements in the series, and take NRS measurements of a new group of 20 thalassemic patients of physician Edward Zaino of Mercy Hospital, Rockville Center.

"The funding from the Cooley's Anemia Foundation will enable us to refine our technique and perform further NRS measurements of the heart, as well as continue our work regarding iron stores in the liver," says Wielopolski. "The next step in our research will be to increase the patients' dose of chelating agents and see what effect that has on the iron burden of the liver and heart."

—Marsha Belford

Haeg Named to Head Contracts & Procurement

Joseph D. Haeg, Assistant Manager of the Division of Contracts and Procurement, has been appointed Manager, effective immediately. He will succeed Alfred P. Lewis who had been with the division 24 years and who went on long term disability November 12. Haeg credits Lewis, in large part, for the smooth running operation he has inherited.

Haeg has been at the Laboratory since 1962. His specialty in his early buying days was what they called emergency procurement. He had to find and get delivered within 24 hours, items generally less than \$50 which were urgently needed. This honed his buying skills and, he says, exposed him to many different commodities and different marketplaces. Since then, he has become experienced in every facet of purchasing goods and developing contracts.

Asked about changes in purchasing during the last 22 years, he noted several highlights:

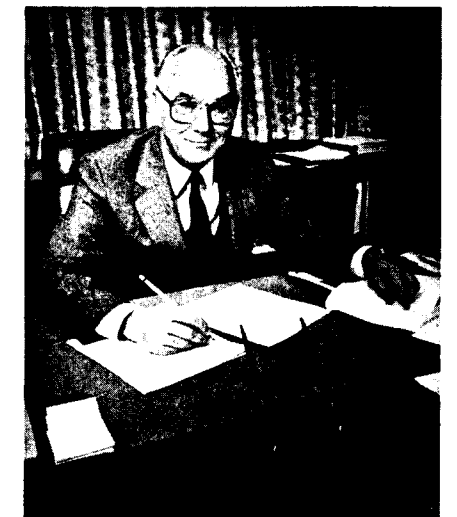
- Computerization of the procurement process. This began about five years ago and, after the start-up problems were ironed out, is working well.
- Government procurement regulations have multiplied, making procurement procedures more cumbersome.
- These regulations and an increase

in requests are responsible for having, for instance, five people do R&D and service contracts which at one time, Haeg was able to do by himself.

• The employment of women on the professional staff of the division. When Haeg started, women held only secretarial posts.

• A stronger effort to give small firms and minority enterprises business opportunities through Lab purchases.

Currently, the staff consists of 40 people. Last fiscal year, Contracts and Procurement spent \$72 million which involved 28,000 transactions.



Joseph Haeg

—Roger Stoutenburgh



—Roger Stoutenburgh

Enhancing the main entrance to BNL since Wednesday, November 7, has been a new sign, designed by Roger Bailey of Plant Engineering, Architectural Design Group, and landscaped by the Grounds Maintenance Group. Though the sign appears to have been carved from a block of stone, it is actually a clever construction, prefabricated by an outside contractor. The sign consists of a steel frame covered in the same acrylic stucco as that being applied to many of the Lab's masonry buildings (see story).

On Site

What's being done to Building 459?

Building 459, home to Management Information Systems (MIS), is getting a facelift, as part of a lab-wide, energy saving project to insulate some of the structures built on site during World War II.

Funded by the Department of Energy's (DOE) In-House Energy Management Program, the project grew out of a 1979 Plant Engineering (PE) study aimed at finding the most economical way of insulating concrete or metal buildings on the outside, while maintaining a pleasing appearance. Based on the results of that study, PE's Energy Management Group submitted a proposal to DOE. "In 1983," said energy engineer Mark Culp, "we received \$920,000 for phase one, and we recently were approved for phase two, another \$930,000 for fiscal year 1985."

What that money will buy is new insulation for many of the masonry buildings BNL inherited from Camp Upton. During phase one, new coats will be applied to buildings 421, Structural Biology; 426, Environmental Chemistry; 445, Waste Management Facility (almost finished); 459, MIS (completion next spring); 464, DOE Brookhaven Area Office (under way); 475, Department of Applied Science (DAS); 479, Heavy Machine Shop 526, DAS (all done); 527, DAS Combustion Research; and 901, Cyclotron.

Once a building is re-covered, it will pay for its new coat in energy savings in about two years. And there are other savings as well. "Putting the insulation inside would cost about twice as much," said Culp, "there's too much inside to be removed and replaced." The outside insulation also saves the inconvenience of having to move people around.

Before the new insulation can be applied, the existing concrete block surface must be cleaned and smoothed, by sand blasting or a high pressure water wash. Then three-inch thick polystyrene boards are attached to the block with a mastic-type adhe-

sive. "The reason we went with three inch boards," said Culp, "is to bring the walls up to DOE and national energy standards for wall insulation. When added to the existing wall, we have a total R value of 17."

On top of the tightly butted boards, a coat of a plaster-like material is applied. Embedded in the wet material, for rigidity, is a fiberglass mesh that looks somewhat like a net. When all is dry, everything is covered with a washable, final coat of acrylic stucco, which is available in a wide range of colors and textures.

Design development for the various buildings fell to project architect John Castro, of PE's Architectural Design Group, who was also assisted by an outside architectural consultant. "What we are doing," he said, "is swallowing up whole buildings in a new material. It's an opportunity to give some of these vintage buildings a new and attractive look." Toward that end Castro is also working with the Grounds Maintenance Group of PE to develop landscaping that complements each renovated structure.

Renovations have been completed, and the Brookhaven Center will reopen on Monday, November 19.

Equipment Demo

The General Communications Corporation will exhibit UNIX based hardware and software products including: UNIX based systems for real-time data acquisition and measurement applications; UNIX based systems for program cross development for Macintosh(tm), Apple(tm), IBM(tm), PC/XT/AT, Commodore(tm); and UNIX kernel performance enhancements. The demonstration will be held in the lobby of Berkner Hall between 10 a.m. and 5 p.m., Tuesday, November 20.

Arrivals & Departures

Arrivals

Prem L. Bhalla Biology
Edward C. Carley Central Shops
Daniel A. Fischer NSLS
Emanuel Garber Physics
James F. McCabe S&ES

Departures

None

Van Hove (Continued)

one billion electron volts), then collide with fixed targets. Brookhaven has also submitted a proposal to the U.S. Department of Energy for a Relativistic Heavy Ion Collider (RHIC) in which two opposing beams of heavy ions (up to and including gold) traveling close to the speed of light (relativistic), would collide. Collisions could occur at a wide range of energies, up to at least 100 GeV per nucleon in each beam.

"In this field, there's a great advantage to experimenting with heavy ions," explained Van Hove. "It makes more plasma possible. The quark-gluon plasma is supposed to be a new state of matter, and we want to see it in bulk. We would like to produce as much plasma as we can, so we start with as much nuclear matter as we can."

The AGS experimentation will be a first step towards searching for this new state of matter. "You're entering a very interesting domain," said Van Hove, "one that you have to go through as a basis for further study. The plasma, we may perhaps never see. Maybe we are wrong in our guess. But what is certainly right is that you'll reach energy densities which are incredibly high. You'll have very, very intense accumulations of energy and, also, high compression of nuclear matter. That you enter a totally new territory, cannot be disputed and it is guaranteed."

Different research interests dominated Van Hove's agenda when he first came to BNL, in the 1950's. Recalled Van Hove, "I was here for several summers, as a young theorist having discussions with experimentalists who worked on the Graphite Reactor. I was a research associate at the Institute for Advanced Study, working in the field of low energy neutron scattering."

"In the summers I spent here, I did see this laboratory transforming in several very essential ways," Van Hove said, during his lab-wide lec-

ture. "It was being opened up to outsiders. The access was made more and more convenient, not only to American scientists but also to foreigners. And large facilities like the Graphite Reactor, the Cosmotron and, later on, the AGS were being constructed with the spirit that they were there not to be used exclusively by the in-house staff, but to be fundamental instruments for the scientific community at large.

"The development of Brookhaven was a very important example for other institutions at that time and, in particular, for the development of CERN," he continued. "I should add that at CERN, during the construction of the proton synchrotron, which is a slightly smaller brother of the AGS that was built in the same span of time, there developed a remarkably fruitful and friendly collaboration between the people at Brookhaven and at CERN. That was the beginning of a long-standing and friendly collaboration of scientists on both sides of the ocean."

Though Van Hove often comes to the United States, this visit was particularly well timed, in several respects. "It's always an experience to be in the States when you have a Presidential election," he said. "It happened twice in my life. When Eisenhower was elected the first time, I was a young man in Princeton. I remember that night, when Stevenson was the other candidate, things were very unclear and there was a long night of guessing, whereas this year the surprise was in the landslide more than the election."

The timing was also beneficial to Van Hove's love of art. "I really counted on this visit to see the improvements at the Museum of Modern Art," he said.

And finally, Van Hove said, "I had very good weather." He will have a chance to see if our weather patterns repeat themselves next year, when he has scheduled his second year's visit for the last half of October.

—Anita Cohen

A Quark Matter Primer

Quark-gluon plasma? Relativistic heavy ions? Nuclear matter? Understanding these terms is the key to understanding the new kinds of physics research planned and proposed for Brookhaven. Leon Van Hove's lab-wide lecture on November 5 discussed the theory behind that research, summarized below.

1. It's a matter of matter.

Normally, atoms combine to form solid, liquid or gaseous matter. In stars and interstellar gases, or under certain laboratory conditions, the atoms in gases can lose electrons and become ions. This ionized mixture of positive ions and electrons is a fourth state of matter called a plasma. Today, theoretical physicists like Leon Van Hove believe that, under the right circumstances, another state of matter — a new type of plasma — can be created out of the entities that combine to form nuclear matter.

2. Quarks + gluons = hadrons.

Atomic nuclei are composed of protons and neutrons, which are composed of even smaller entities called quarks, "glued" together by other entities called gluons. When three quarks join forces they can form protons and neutrons, as well as other particles called hadrons.

3. A strong relationship.

The quark/gluon symbiosis is so tight that quarks cannot exist in free space. As quarks draw further away from each other, the field surrounding them (called the color field) just gets stronger. New quarks are created, and, in the end, no quarks will be found in isolation. As described by the theory of Quantum Chromodynamics (QCD), this confinement property will prohibit anyone from ever liberating a free quark, unless the right conditions prevail.

4. Under the right conditions...

The conditions that must prevail, says QCD, are characterized by extremely high densities and temperatures, and would mimic those which existed during the first moments of the expansion of the universe or which may be found now in some neutron stars. "We know of only one possibility," says Van Hove, for reproducing these conditions in the laboratory: using accelerators to create very high energy collisions of atomic nuclei. That is the aim of the heavy ion program.

5. Compression yields deconfinement.

In such collisions, it is theorized, the nuclear matter would be tightly compressed, stacking quarks on top of each other and crowding them to the point of deconfinement. When there are too many hadrons in too small a space, quark-gluon plasma, or quark matter, would be formed.

6. Measuring the plasma.

If quark matter exists and can be created in the laboratory, physicists hope to measure its properties, as well as the characteristics of the transition from one state of matter to another. Because the plasma would be very short-lived, only its remnants — in the form of hadrons that flow out of it — would be detected. These measurements would be both difficult and time-consuming, as physicists try to separate those that tell something about the properties of quark matter from those that are related more to the ejected hadrons. In the end, however, a new state of matter, the quark-gluon plasma, could be carefully studied.

—A.C.

BROOKHAVEN BULLETIN

Published weekly for the employees of BROOKHAVEN NATIONAL LABORATORY

BERNICE PETERSEN, Editor
MONA S. ROWE, Associate Editor
ANITA COHEN, Reporter
MARSHA BELFORD, Reporter

35 BROOKHAVEN AVE., UPTON, N.Y. 11973
Telephone (516)282-2345

Concert Rehearsals

A schedule of rehearsals for a Christmas Concert has been set for Tuesdays and Thursdays starting November 27, at noon in Berkner auditorium. Each rehearsal is expected to last not more than half an hour. All interested singers are invited to join the BNL Choral Group for this annual concert which is presented in the cafeteria during the holiday season.

PC Users Meeting

The next meeting of the PC/Workstations Group will be on Wednesday, November 28, at 10:30 a.m. in the Applied Mathematics Department Seminar Room. Marwin Rapkin will talk on "APL — Love It Or Leave It". APL is a compact and powerful programming language.

Diners Note

The Cafeteria will operate only snack bar service from 9:00 a.m. until 2:00 p.m. daily over the Thanksgiving holiday weekend, Thursday, November 22 through Sunday, November 25. The Brookhaven Center will be closed on Thursday, Friday and Saturday, reopening at 5:00 p.m. on Sunday, November 25.

The Vended Food Service in Building 912 will be in operation throughout the Thanksgiving holiday.

NYC Train Trips

The Hospitality Committee is planning two group railroad trips to the city in the next two weeks. The first is a regularly scheduled trip on Wednesday, December 5, leaving at 7:55 a.m. The round-trip fare is \$5.00. The second is a regularly scheduled trip on Saturday, December 8, leaving at 8:31 a.m. Round-trip fare is \$6.50. Children under five years ride free on both trips. All departures are from the Patchogue LIRR station. Fares for both trips must be received no later than Thursday, November 29.

To reserve a ticket, send your fare through the U.S. mail to BNL, P.O. Box 322, Upton, New York 11973. Checks or money orders should be made payable to BNL. Do not send cash. Put the date of the trip, your telephone number and BNL life number on the check. Tickets will be given to you on the train.



"YOU DON'T EAT THEM. JUST SPILL THEM ON THE FLOOR THREE TIMES A DAY AND PICK THEM UP ONE AT A TIME."

BERA News

On the Aisle

Righting their world is the main task performed by the characters in the comedy *Morning's at Seven*, by Paul Osborne, the fall production of the BNL Theater Group finely directed by Neil Baggett and well produced by Kurt Fuchel. The title of this play, set in a Midwestern town in the 1930's, comes from a Robert Browning poem in which he declares, "God's in his heaven — all's right with the world." But in this play all is not right in the worlds of four elderly, yet spry, sisters. Their papa used to say, "Esty's smartest, Arry's wildest, Ida's slowest, Cora's mildest," and although the four are in their sixties and seventies, they still can be described by those adjectives.

Esty, acted with sensibility and intelligence by Penny Baggett, thinks she has outsmarted her husband David, acted by Peter Rathvon, by visiting her sisters on the sly though she promised him she wouldn't. David, a former college professor who thinks highly of himself and little of his "moron" in-laws, wises up to Esty, confronts his wife with her broken promise and takes action on his threat to make Esty a "free agent." Rathvon wittily combines David's pomposity and brilliant insight with sophisticated humor.

Arry, the youngest sister and the "old maid" who lives with Cora and her husband, disregards the restraints time and custom have placed on the others. She is one busybody who doesn't believe "your own sister should talk behind your back." But she doesn't follow her own advice. Arry talks behind her sisters' backs. Peggy Woody portrays this feisty lady with verve and energy.

Ida, played with patience and even-temperedness by Connie Fuchel, slowly realizes that her 68-year-old husband Carl and her 40-year-old son Homer must grow up. At his mother's insistence, Homer, played with humorous timidity and growing self-confidence by Tom Morris, finally brings home the 39-year-old "girl" Myrtle he has dated for the past 12 years. Sandi Lane is convincing as Myrtle, a sappy, sweet and self-effacing woman who is anxious to please, yet anxious not to end up an old maid.

When Homer introduces Myrtle to his family, his father Carl refuses to meet her because "why should anybody want to meet a failure like me?" Bob Butz acts out Carl's existential crisis with amusing heart and soul.

Jane Love plays Cora as a sleeping volcano about to erupt. As Cora, who is temperate in feeling and behavior, declares, "There's such a thing as being too mild." Cora directs her passion against Arry and at her husband Thor, acted by Bill Love as a wise, yet innocently foolish, man who is used to the company of the two feuding sisters.

The plot is revealed in Cora's and Ida's neighboring backyards. The set, designed by Penny and Neil Baggett and Jane Wood, has an American Gothic simplicity to it. The sisters' white wood-frame houses are represented by austere, yet elegant, white wood frames. This backdrop of stick houses allows the characters to escape the confines of their homes and interrelationships, yet confines the players within a framed picture of familiar, familial scenes.

—Marsha Belford

Bowling

Red/Green League

Ed Sperry IV rolled a 227, Dick Adams 224, Ed Meier 219/215/633 scratch, Hank Arnesen 218, Tom Prach 213, Rich Larsen 208/203/600 scratch, Wayne Rasmussen 207, Charlie Tomesch 206, Bill Sells 205, Bob Jones 200, Ed Sperry 200.

Pink League

Fern Coyle bowled a 186, 84 pins over average, Maryann Reynolds 182.

Purple League

Gene Fales had a 210, Joe Ferrante 207, Jere Austin 203, Mary Eggert 178, Mary Grace Meier 172.

White League

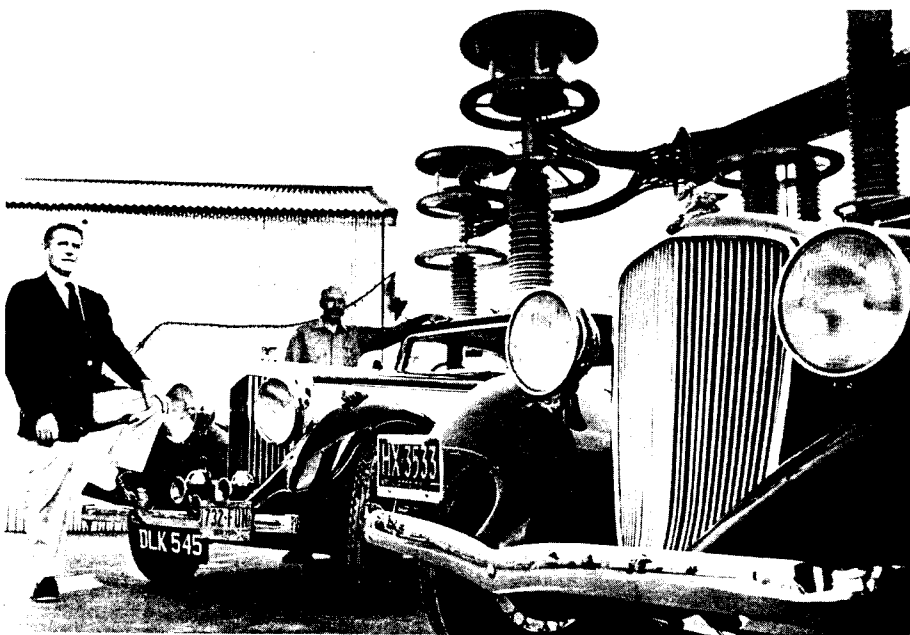
High games were bowled by Ken Asselta 223/226, Rich Larsen 234, Gene Hassell 215, Nelson Tyler 213, Al Pinelli 200, Caryl MacDougall 221, Lee Barberich 206, Kathy Griffin 197/192, Sharon Smith 193, Jeanette Thiede 192.

Cooking Exchange

"Dim Sum" is the theme of the next meeting of the Cooking Exchange on Wednesday, November 28. In Chinese cookery, dim sum are small dumplings which are usually steamed or fried, and filled with meat, vegetables or condiments. They are served as appetizers, snacks or as a light meal. Various dumplings will be prepared and sampled.

The Cooking Exchange is open to all employees and members of their immediate families. Meetings are held in the Recreation Building on the second and fourth Wednesdays of each month from 12:30 to 2:30 p.m. A \$1 donation entitles each attendee to a copy of the day's recipes, generous samples of the prepared dishes, and coffee or tea. Babysitting is provided at 50¢ for each child.

For more information, contact Michiko Tanaka, 744-3690, or Dee Polychronakos, 744-3578.



Eric Forsyth (left) and Al Muller on the site of the Power Transmission Project with their "fun" cars — a 1937 Bentley and a 1933 Essex Terraplane.

They Don't Make 'Em Like They Used To

Immersed as they are every day in the high tech world of the Power Transmission Project, Eric Forsyth and Al Muller find joy and relaxation in antique cars.

Forsyth's car is a 1937 Bentley which he bought in England and had shipped over here in a container. He bought it from a fellow member of the Bentley Drivers' Club, an organization devoted to the preservation of these cars. The club possesses all the original drawings and arranges to have the spare parts made. Forsyth owns another Bentley, this one, a 1928 which he restored himself. The Bentley company went under in 1930 and was bought by Rolls Royce which made a line of cars they called Bentley from 1933 to 1939, when production was discontinued. Forsyth's 1937 Bent-

ley has 98,000 miles on it and he says it's probably more like 198,000. The 1928 car has clocked in 250,000 miles.

Al Muller drives a 1933 Essex Terraplane. He's had it since he was an undergraduate and has been restoring it for the past five years. Muller bought the Terraplane in 1950 as a used car and it has a straight "8" engine. He has done a ground-up restoration on it — "every bolt has been taken apart and reconditioned." This spring was the first time it had been on the road in 30 years. Muller also has a 1941 Hudson in his garage. Essex was a division of the Hudson Motorcar Co. In 1954, Hudson merged with Nash to form American Motors.

As does Forsyth, Muller drives his elegant car to work only in good weather.

Cafeteria Menu

Week Ending November 23

Monday, November 19

Navy bean soup	(cup) .65
	(bowl) .85
BBQ spare ribs w/black eyed peas	2.10
Southern fried chicken	
w/collard greens	2.05
Hot Deli — Top round of beef	(bread) 2.00
	(roll) 2.20

Tuesday, November 20

French onion soup	(cup) .65
	(bowl) .85

Thanksgiving Special

Prime ribs of beef	
with broccoli spears or cauliflower au gratin	
and	
French fried or boiled new potatoes	2.80

Wednesday, November 21

Cream of tomato soup	(cup) .65
	(bowl) .85
Seafood platter	2.30
London broil w/mushroom gravy	
& 1 veg.	2.30
Hot Deli — Knockwurst & kraut	(bread) 2.00
	(roll) 2.20

Thursday, November 22

Snack bar — 9:00 a.m. — 2:00 p.m.

Friday, November 23

Snack bar — 9:00 a.m. — 2:00 p.m.

GRAF Values

November	67.06	December	66.84
January	66.50	February	64.21
March	65.37	April	65.34
May	60.81	June	61.71
July	60.35	August	\$66.91
September	66.75		
		October	\$66.70

Badge Bulletin

When your film badge is not on your body, it belongs on the board. In particular, make sure it is on the board by November 30. A new type of badge will be issued December 1 and the old ones picked up. Your safety coordinator has the details.

Classified Advertisements

Placement Notices

The Laboratory's placement policy is to select the best-qualified candidate for an available position, with consideration given to candidates in the following order of priority: (1) present employees within the department, with preference to those within the immediate work group; (2) present employees within the Laboratory as a whole; and (3) outside applicants. In keeping with the Affirmative Action plan, selection decisions are made without regard to age, race, color, religion, national origin, sex, handicap or veteran status.

Each week, the Personnel Office lists new personnel placement requisitions. The purpose of these listings is, first, to provide open placement information on all non-scientific staff positions; second, to give employees an opportunity to request consideration for themselves through Personnel; and, finally, for general recruiting purposes. Because of the priority preference policy stated above, each listing does not necessarily represent an opportunity for all candidates. As a guide to readers, the listings are grouped according to the anticipated area of recruitment.

Except when operational needs require otherwise, positions will remain open for one week following publication date.

For further information regarding a placement listing, contact the Personnel Placement Supervisor, Ext. 2882.

LABORATORY RECRUITMENT - Opportunities for Laboratory employees.

2143 PAINTER A - Under minimum supervision, performs wide variety of interior and exterior skilled painting operations on buildings, furniture, and Laboratory equipment. Must know use and application of paints, synthetics, bleaching materials, stains and similar products. Plant Engineering Division.

2144 FINISHER A - Under minimum supervision, applies all finishes to furniture, models, and cabinet products. Must be proficient in the use of spray equipment, synthetic and other paints, rubbing compounds, masking and similar work on wood, metal, and other finishes. Plant Engineering Division.

Autos & Auto Supplies

72 MONTEGO - 70,000 mi., ac, am/fm cassette, \$400. Ext. 3533 or 289-1488.

73 BUICK ELECTRA - completely loaded, nice shape, low mi. 475-2289.

82 DODGE 150 RAMPICK-UP - 6 cyl., 4 spd. over-drive, 68,000 miles, missing tailpipe, \$4,450 neg. 924-7627.

SNOW TIRES - 15", mounted on rims, from 77 Chevy, \$25 for both. Joe, Ext. 4255 or 289-1831.

84 HONDA SPREE MOPED - 6 mos. old, excel. cond., \$400. Ext. 3908 or 585-4038.

78 MERCEDES BENZ 300 DIESEL - clean, very good cond., asking, \$10,500. Ext. 7959 or 727-5803.

67 PONTIAC LEMANS - new engine, trans., reliable, runs well, \$750. Bob, Ext. 2088 or 924-0834.

73 TOYOTA CORONA DELUXE - good running cond., p/s, p/b, a/c, \$500. Norbert, 567-1800 or 821-3940 eves.

79 BRONCO - auto., 4 wheel drive, brand new big tires, \$6,950 neg. 924-7627.

RIMS - (4), lug-mag, 5-1/2-JJx14, \$40/pr. 231-7750. Ext. 400 days or 751-6418 weekends.

79 FORD COUNTRY SQUIRE STATION WAGON - all power, 50,000 miles, \$3,500. Joe Soler, 475-4596.

MANUALS - 1984 Ford truck, 1 set, 4 books, \$30; Shop manual, 76 & 77 Honda Civic cvcc, \$5; Toyota am/fm, 4-spkr. radio, \$40. Gordon, Ext. 4095.

76 NOVA CONCOURSE - 2 dr., 48K miles, excel. cond., avail. Dec. 1, \$2,500 firm. Al, Ext. 2043 or 369-1768 nights.

70 OLDS 88 - ps/pb, runs well, \$500. Jeanne, Ext. 2364 or 7742.

73 GREMLIN - high mileage, good local trans., \$300. Ext. 4184 or 736-3573.

BONAIRE VACUUM CLEANER - for auto., paid \$25, used once, sell for \$15. 727-5912.

81 LEMANS STATION WAGON - excel. cond., 32,000 miles, \$5,100. Ed, Ext. 7786.

74 CHEVY NOVA - 6 cyl., two door, auto., p/s, good cond. Bob, Ext. 4672 or 929-4753.

77 NOVA - 3 dr., 6 cyl., 98K, \$750. Phil, 689-9402.

76 PINTO STATION WAGON - for parts, \$165. Ed, Ext. 7786.

RIMS - (2), Ford/Merc., 14 in., 5 hole, \$5/ea. Tony, Ext. 3637.

76 DODGE DART - p/s, p/b, a/c, clean inside and out, dependable, \$975. G. Watson, Ext. 4716 or 286-3679.

80 AUDI 5000S - Diesel, 5 spd., 38 mpg, all power, air, cruise control, am/fm tape, Met/Red, low miles, \$7,900. 941-4999.

63 VOLKSWAGON BUG - running cond., needs new floor driver's side, \$100. Ext. 4660 or 286-8445.

82 ESCORT-GL - 4 dr., am/fm stereo, intv. wipers, 4 spd., gauges, \$4,100. L. Licalzi, Ext. 3354 or 473-3328.

81 GTA CELICA - Ltd. Edition, Supra, int. brown/tan, excel. cond., \$5,900. Linda, Ext. 7745.

76 FORD PINTO WAGON - am/fm, reliable, snows, \$750. 928-6120 nights, weekends Ext. 4339.

77 HONDA - CB 750K, 24K mi., windscreen, runs well, \$850. Dave, Ext. 2386 or 924-6575.

76 GREMLIN - 2 door, std., am/fm cassette, excel. body, 70K mi., good tires, \$1,300 flexible. JU8-6519.

DUNE BUGGY - show car w/Porsche motor, all new parts, \$2500. Dave, 669-2526.

80 PLYMOUTH HORIZON - 2 dr., hatchback, 4 spd., a/c, am/fm, 38,000 mi., \$3,250. 286-1783 after 5 p.m.

76 GMC CARRYALL - 350 cu. in., 3 spd. col., new tires, shocks, \$1,800. Dave, Ext. 2386 or 924-6575.

73 VW SQUARE BACK - good running cond., engine 2 years old. Ron, Ext. 2189 or 281-6630 after 5 p.m.

TIRES - (2), Pirelli-P3, 175SR-14, low mileage, \$75/pr. Ext. 2253.

81 FORD ESCORT L - a/t, a/c, 60,000 mi., excel. cond., \$2,850. John, Ext. 5277.

78 HONDA CIVIC - 4 spd., 35 mpg., am/fm, \$1,400. Sherie, Ext. 4478 or 924-6937.

71 DUSTER - good engine and trans., \$150. 751-2149 after 6 p.m.

TIRES - (2), 15" w/w, steel belted tires, size 225-15, \$15. 727-5912.

83 SUZUKI - SP 250 Enduro, excel. cond., \$1,000. Rob, 727-1155.

81 KAWASAKI - 650 CSR, 2,000 miles, sissy bar, excel. cond., \$1,300. Lew, Ext. 3082 or 477-2262.

69 OLDS DELTA 88 - 75K, good running cond., \$600. Ext. 7507 or 744-3729 after 5 p.m.

81 KAWASAKI - black 440 Ltd, 160 miles, must sell, \$900. 289-6519.

80 DATSUN 200SX - am/fm stereo, w/quad. speakers, a/c, p/s, p/b, 5 spd., turbo, elec. test system/side mirrors, tinted sunroof, good cond., \$5,500. 654-0830.

70 CAMARO - a/t, a/c, runs well, needs body work, \$595; 78 Honda motorcycle, CB 550K, low mi., excel. cond. 467-8563 after 6 p.m.

TIRES - (4) Bridgestone, HR-78-15, mud & snow, steel belted radials on white spoke rims., excel. cond., best offer. Jerry, Ext. 2907.

71 DATSUN - \$400. 286-9051.

74 GMC - 4x4, all new sheet metal, alum. wheels, tires, paint, utility body, \$5,500. 744-9892 after 6 p.m.

Miscellaneous

FLOOR WAXER - \$10; basketball rim, \$5; girl's ice skates, 6 pairs, sizes 4-13, \$2/pr. Ext. 4846.

TRASH COMPACTER - Kenmore, new cond., changeable panels, freestand/under counter, \$200. Nick, Ext. 7652 or 758-9197.

SW RADIO - walkie-talkie (2). Dan, Ext. 2319.

160 SKIS - w/poles, Fischer w/Tyrolia bindings, excel. cond., \$90; Coleco Vision, orig. box, 3 game cart., hardly used, \$80. Ext. 3604 or 878-0516 after 5:30 p.m.

SUPER QUAD FUZZ BUSTER - \$75; VHF to VHF block converter, \$50; dictaphone, \$50. 281-7844 eves.

BUNK BEDS - good cond.; 4 cup electric drip coffee pot, \$5. 924-7476 eves.

CONTEMPORARY KITCHEN SET - table, four chairs and leaf, tan formica top, chrome legs, \$75. 924-7634.

LENS - camera f28, 35mm wide angle Ricoh 126c Flex TLS, \$20. Susan, Ext. 4267.

GENERAL ELECTRIC WASHER - old, but serviceable, \$50. Culwick, Ext. 4930 or 744-5892.

BED FRAME - single, metal, w/mattress and box-spring, good cond., \$10. Mark 473-5012 or Ext. 4058.

CHIPPENDALE DINING ROOM SET - good cond., good price. 751-2149 after 6 p.m.

WOODEN DESK - oak, \$65; dumbbells, \$10; Binks compressor and spray gun, \$85; Electrolux floor scrubber/polisher, \$150. Paul, Ext. 4156.

EXHAUST HOOD - for kitchen range, excel. cond., harvest gold, variable speed, w/light, \$60. Tom, Ext. 4084 or 878-1060.

26" BOY'S BICYCLE - w/2 carry racks, ideal for newspaper route, \$35. Joe, Ext. 4255 or 289-1831.

WOODEN DESK - chair, swivel type, \$30; adult wooden crutches. Ext. 7509.

MOVIE PROJECTOR - 16mm Sound Singer model, new cond., \$300. 878-9256.

BIKES - (2) boy's, excel. cond., 20" red Columbia, \$35; 20" Columbia Trans-Am, black/yellow, \$50. Larry, Ext. 4295.

CHEST OF DRAWERS - \$20; 6-1/2 ft. artificial Xmas tree, \$5; 3 Mission oak chairs, \$50; large wooden dining room table, \$40. 878-6637.

SOFA BED - brown/beige, like new, \$225. 744-9677.

PVC DARKROOM SINK - 72"x22", splash board, print drying racks, cabinet underneath, excel. cond., \$250. 698-0234.

WOODSTOVE - Upland Mod. 207, \$200; coal-stove, Koppe, new \$1,100, sell for \$650. Gordon, Ext. 4095.

MINK STOLE - w/Launaire Collar, \$300 or best offer. 363-6121 after 6 p.m.

FREEZER - upright 15-1/2 cu. ft., 3 modern sofas; chandeliers, 2 bikes for 8-12 yr. old, 12' x 20' green nylon carpet, guitar & amp. Jake, Ext. 4532.

DOUBLE HUNG WINDOW - w/screens and storms, extra pair of screens and storms all good cond. 325-0447 after 6 p.m.

G.E. FREEZER CHEST - in good working cond., \$65. 878-0897 after 5:30 p.m.

TV ANTENNA - 24 elements, orig. cost \$70, best offer. Ext. 3067.

GERMAN SHEPHERD PUPS - AKC Reg., white/black and tan/black, \$350. 281-1694.

AIR CONDITIONER - Sears Kenmore, energy efficient for casement windows, used one season, 6000 btu, \$400. 331-3999.

CB RADIO - SBA, 40-channel, complete w/antenna, \$40. Ext. 4680 or 286-1331.

TREES - locally grown, evergreens, maples, dog-wood, you dig, reas. 924-6582.

ROLLER SKATES - like new, woman's size 9, \$22. 744-0354 after 3 p.m.

MEXICAN LIVING ROOM SET - 5 pieces, hand carved, good condition, needs 3 cushions for couch, \$750. 654-0830.

BOEHM PORECELAIN - "The Sacred Cow Head" commissioned for King Tut exhibit, \$375. 286-0517.

CHESS COMPUTER - Sensory Challenger 9, ac adapter CB9 cartridge. Ext. 2883.

BABY CRIB - \$40; baby carriage, \$20; baby car seat, \$5. 399-4394.

SPEAKERS - B.I.C. Venturi, 48" x 14" x 16", walnut, \$600 new now \$300/pr. 689-7487.

ATARI 5200 - w/5 tapes, asking \$100; child's desk, antique white, excel. cond., \$30. 689-8090 after 4 p.m.

DISPOSABLE DIAPERS - thick, absorbant (w/o elastic legs), for toddlers, mne trained early 282-3031.

SPANISH OAK HUTCH - 7 ft., w/stereo and bar, mint cond., \$500; helmets, daggers, band saw, reasonable. 281-6944.

ROWING MACHINE AMEREC 610 - barely used, \$225. 331-4458 eves. or weeker ds.

BIC TURNTABLE - w/Grado cartridges, \$35; Craftsman 18" chain saw, \$125. 751-8240.

COUCH - blue & tan print, \$125. 9 x 12 wool oriental design rug, \$125, fruitwood burl ball-foot china cabine, \$525.00. 751-8240.

SPACE HEATER - \$25; children's sheets, 3 pc., \$15; 2 pc., \$10; woman's velour robe, orig. \$66, ask \$25; humidifier, \$25. S. Spark, Ext. 4111.

FIREWOOD - full cords, split and delivered, \$135. 467-8976.

POINSETTIA - red, various sizes, delivery around Dec. 15. 727-6818.

ROLL UP BLINDS - white, two 30", one 27", \$3/ea. Bob, 4551.

STORM DOOR - alum., 35 1/2" w x 83" h, jalousie insert, \$25. 727-4884 after 5:30 p.m.

MOVING SALE - phone for items and prices. 732-5004.

TRAVEL TRAILER - 15 1/2', sleeps six, \$3,500; Nikon camera, 3 lenses, 2X extender polarizer, exten. tubes, sunbeam prd., flash fully auto.; Kero heater, Sears, 19K btu, new wick and ignitor, \$60. 732-5004.

Car Pools

E. NORTHPORT/COMMACK - 4 driver pool looking for 5th driver. Paul, Ext. 4156.

MATTITUCK - driver to fill car pool, regular hours. Bill, Ext. 3992.

QUEENS - need drivers to join existing car pool, meet LIE exit 32. Ext. 3606.

BAYPORT - rider/driver to fill existing car pool. Ext. 4159/4085 or 2408, beeper 460.

STONY BROOK TRANSVAN - has vacancy for one rider. Sid, Ext. 4125 or Paul, Ext. 2476.

Real Estate

Real Estate advertised for sale or rent is available without regard for the race, color, creed or national origin of the applicant.

For Rent

SELDEN - 1 bedroom apt., unfurn., eik, full bath, pvt. entrance, immac. cond., \$475 incl. utilities. 698-6120.

MASTIC AREA - 2 bedroom, large, basement apartment, \$400/mo. 281-1694.

BELLPORT VILLAGE SOUTH - near bay, stores, fully furnished, spacious modern house, all appliances and piano, mid. Jan. - mid. July, adults only, rent negotiable to responsible tenant. Ext. 3950.

FLORIDA - month of Dec. and/or Nov., 2 bdrm. house, West Coast, planned community. 261-2719 after 5 p.m. or Ext. 4226.

MT. SINAI - furnished room, new carpet, desk, bed, etc., \$250/mo., two meals available w/additional \$250 month. Shoko, 331-4648.

For Sale

BELLPORT - mother/daughter, 5 bdrms., split level, Florida sun room w/deck, 100 x 180 back yard. 286-9051.

CORAM - Birchwood at Bretton Woods, condo., Dalton model, 3 bdrms., den, formal d/r, 1-baths, gas heat, central air, patio, block to clubhouse. 698-0234.

WASHINGTONVILLE - (upstate, 50 miles from NYC), 4 bdrms., fireplace, parquet floors, detached screen house, barn shed, 1 car garage, 1 acre sacrifice, \$110,000. 281-7786.

SELDEN - Cape Cod, 100 x 100 front dormers, full basement, immaculate, walk to shopping, transportation, 20 min. to Lab. 732-5004.

Wanted

ONE BEDROOM APT. - between exit 57-60 LIE. Dan, Ext. 2319.

SKIS - 175 or 180, with or without bindings, good cond. Ext. 3604 or 878-0516.

COAL STOVE - pot belly type. Austin, Ext. 4479.

ACCESSORIES - for a Texas Instrument Computer, printer, interface cable, disk drive. Sandra, Ext. 4933.

TRAINS - Lionel, American Flyer, accessories, any cond. brings good price. Carole, Ext. 3362 or 924-4097 eves.

CAMPBELL SOUP LABELS - send to F. Chandler, Bldg. T89.

HOME FOR CAT - beautiful tri-color, long haired, spayed, new baby allergic, free. Ext. 4184 or 736-3573 eves.

HOUSEMATE - to share large house, 8 min. from Lab., 10-acres, \$200/mo., plus 1/2 util. Roland, Ext. 3969 or 924-3669.

ROOMMATE - female, to share Condo., Calverton Hills, 10 minutes East of Lab., \$285/includes all. Sandy, 369-0433.

VENDORS - Dec. 1, Holiday crafts fair, Bay Community School, S. Country Road, Brookhaven. June, 399-2587 or 286-8026.

2 PERSONS - to share skiing apt. in Colorado at Christmas, 12/20 to 12/29, flights reserved. Edith, Ext. 4379.

Lost & Found

LOST - black leather key case, lost at gym or Medical Dept. area. Dan, Ext. 3631.

Notice

Because of the Thanksgiving holidays, the Bulletin will not be published on November 23.

Classified Ad Policy Deadline is 4:30 p.m. Friday for publication Friday of the next week.

As this is the time of year to renew old friendships and to remember those you may not have had a chance to visit during the year, the Bulletin is publishing this list of retired employees and those on long-term leave. The listing was prepared by Personnel Services from their records and is up to date as of November 3. If you have any corrections, please notify Personnel or call (516) 282-7516.

- RAYMOND A. ABBOTT
1809 E. Indiana Ave.
Southern Pines, NC 28387
- BENJAMIN C. ACKERT
RR1, Box 404
Shohola, PA 18458
- MARY ADAMCZEWSKI
River Road
Calverton, NY 11933
- ROGER R. ADAMS
Box 356 Overhill Rd.
Shoreham, NY 11786
- WILLIAM E. ADAMS, JR.
19 Middleton Rd.
Greenport, NY 11944
- MARY ADELHARDT
16 Canal Rd.
Massapequa, NY 11758
- GEORGE ADLER
21 Harvard Rd.
Shoreham, NY 11786
- ROBERT AICHROTH
129 Shaw Ave.
Islip, NY 11751
- JAMES ALBERTI
161 Sun Valley Estates
Tarpon Springs, FL 33589
- JOHN H. ALBRECHT
525-167 Riverleigh Ave.
Riverhead, NY 11901
- ROBERT C. ALDRIDGE
Flying Point Rd.
Watermill, NY 11976
- HAROLD ALEXANDERSON
51 Munson Lane
W. Sayville, NY 11796
- AUGUSTINE O. ALLEN
Box 173
Shoreham, NY 11786
- JOSEPH E. ALLINGER
35 Rockridge Dr.
Eugene, OR 97405
- ADOLPH A. ALMASY
20 La Crosse Rd.
Mastic Beach, NY 11951
- JAMES AMARO
40 Inwood Ave.
Seiden, NY 11784
- HAROLD F. AMES
2233 White Marsh Rd.
Suffolk, VA 23434
- ELEANOR C. ANDERSON
Rt. 2 Box 118
Ostham Ave.
Riverhead, NY 11901
- R. CHRISTIAN ANDERSON
186 Beaverdam Rd.
Brookhaven, NY 11719
- THEODORE ARNS
Box 453
Center Moriches, NY 11934
- FRANCIS W. ASCOLESE
240 Private Rd.
E. Patchogue, NY 11772
- GINO AURELIO
486 Windsor Farms Dr.
Lawrenceville, GA 30245
- VIRGINIA AUSTEN
38 Woodlot Rd.,
Ridge, NY 11961
- COSMO R. AZZARA
407 Pulaski Rd.
Greenlawn, NY 11740
- CHARLES P. BAKER
Fairhaven C071
7200 Third Ave.
Sykesville, MD 21784
- LEONARD S. BAKER
8612 Fox Run
Potomac, MD 20854
- ROBERT BAKER
108 Ave. A
Port Jefferson, NY 11777
- ROGER D. BAKER
7 Woodland Park
Bellport, NY 11713
- ROBERT A. BALDWIN
51 Potter St.
Patchogue, NY 11772
- JOHN T. BALLARD
RR2, Box 9A
Randall Rd.
Wading River, NY 11792
- HERBERT BANKS
543 Surrey Place
Oceanside, NY 11572
- CARL H. BARBER
19 Case St.
Patchogue, NY 11772
- DAVID A. BARGE
c/o Zarkany
Wardencloff Rd.
Shoreham, NY 11786
- ELIZABETH M. BARNES
37 Station Rd.
Bellport, NY 11713
- ELWOOD J. BARNES
442 Wellwood Dr.
Shirley, NY 11967
- HARRIOT L. BARRY
11 Crosby St.
Center Moriches, NY 11934
- WILLIAM BARTHOLD
Cowan Rd.
P.O. Box 336
Hopart, NY 13788
- HAROLD BARTLETT
Box 386
Riverhead, NY 11901
- GUSTAV K. BARWALD
8919 Fordham St.
Ft. Meyers, FL 33901
- JOHN L. BATDORF, JR.
RD1 McEachron Hill Rd.
Argyle, NY 12809
- JOSEPH BATKY, JR.
Siely La
Northampton
Sag Harbor, NY 11963
- GEORGE BAUER
206 3rd St.
St. James, NY 11780
- FREDERICK BAUMFALK
100 Southern Blvd.
East Patchogue, NY 11772
- ARLENE BAXTER
607 Flanders Rd.,
Riverhead, NY 11901
- ALBERT BEAUFRERE
Private Rd.,
Huntington, NY 11743
- PIERRE R. BECKER
8 Canterbury Court
E. Setauket, NY 11733
- STANLEY L. BECKER
7322 SE Concord Pl.
Hobe Sound, FL 33455
- WALTER G. BECKER
30 Hewlett Ave.
Patchogue, NY 11772
- ARTHUR J. BECKWITH
Rt. 3, Box B
271 Yorkshire Ave.
Ft. Myers, FL 33908
- HENRY BEDNARZ
c/o Barandon
338 Carnation Rd.
W. Islip, NY 11795
- JOSEPH M. BEITEL
41 Fuoco St.
Bellport, NY 11713
- QUENTIN R. BEITEL
Holiday Manor
106 Duncan Lane
Naples, FL 33962
- FRANKLIN G. BELL
Atlantic Ave.
East Moriches, NY 11940
- SILVIO BELLO
4354 Branden Dr.
Delray Beach, FL 33444
- WILLIAM G. BENEDICT
255 Bay Ave.
Patchogue, NY 11772
- JOHN G. BENNETT, SR.
111 Northern Blvd.
Shirley, NY 11967
- WALTER BERNATZKY
c/o Laurie Sturm
2280 Bowers Rd.
Lapeer, MI 48446
- RICHARD A. BETH
8 Leisurely La.
Bellport, NY 11713
- GEORGE A. BETZ
Raynor Rd.
Ridge, NY 11961
- JAMES BIAMONTE
Box 548
Center Moriches, NY 11934
- HARRY BIESELIN
21 Breselin Rd.
Bellport, NY 11713
- WALTER F. BIGELOW
11 St. Joseph Ave.
Lake Ronkonkoma, NY 11779
- AUDREY O. BIITNER
4 Adelaide Park
Center Moriches, NY 11934
- JOHN P. BINNINGTON
348 Beaverdam Rd.
Brookhaven, NY 11719
- ALFRED M. BJORK
Dragsfjard, Karra
Furustrand D21
Finland
- JOHN P. BLEWETT
Box 12
New Suffolk, NY 11956
- FRITZ W. BLOCH
29 Second St.
Bellport, NY 11713
- ARTHUR R. BLUMMERT
10 Palmetto Dr., Box 75-210
Garden City, SC 29576
- RALPH O. BOARDMAN
131 Flanders Rd.
Riverhead, NY 11901
- LEROY R. BOERCKEL
Box 227
Medford, NY 11763
- NORA & WILLIAM BOLSTER
704 Aster St.
Escondido, CA 92027
- ANTHONY BONO
246 Maple Ave.
Smithtown, NY 11787
- GERD BORNER
4348 N.W. 37 Terrace
Fort Lauderdale, FL 33309
- CHRISTINA BORTSCHELLER
112 Pine Road
Mastic Beach, NY 11951
- JOHN BORUCH
621 Bellmore Ave.
Islip Terrace, NY 11572
- PHILLIP L. BORZI
65 Case Ave.
Patchogue, NY 11772
- LOUIS F. BOTH
41 Far Pond Rd.
Southampton, NY 11968
- BRAULIO BOTTARI
348 Revilo Ave.
Shirley, NY 11967
- CHARLES A. BOULIN
145 Central Ave.
Holiday Hill
Pt. Richey, FL 33568
- KARL BRANDT
43 Plattekill Tpk
Newburg, NY 12550
- PHILIP F. BREHER
RD 2, Box 197A
Laurel, DE 19956-9338
- MARGARET BROCKNER
255 Fred Rd.
New Suffolk, NY 11956
- ROBERT BROUWER
13 Sunsel Lane
Patchogue, NY 11772
- HELEN M. BROWELL
945 Riverside Drive
Bldg. 18, Unit B
Methuen, MA 01844
- ROBERT C. BROWN
116 Mill Rd.
Riverhead, NY 11901
- ROBERT P. BROWN
PO Box 370, Moores La.
Cutchogue, NY 11935
- WESLEY BROWN
244 Old Quogue Rd.
Riverhead, NY 11901
- ALFRED J. BRUNINI
2929 E. Ocean Blvd.
Huntington, NY 11743
- NICHOLAS A. BRUNO
Box 198, 1 Crystal Beach Blvd.
Moriches, NY 11955
- GEORGE E. BRYANT
31 Miller Ave.
Center Moriches, NY 11934
- KENNETH BUBB
PO Box 265
8 Breselin Rd.
Bellport, NY 11713
- VERNON J. BUCHANAN
5 George Ct.
Bellport, NY 11713
- MARSHALL BULL
18 Fox Hill Rd.
Chatham, MA 02633
- RITA BULLA
167 Grand Ave.
Shirley, NY 11967
- MARY R. BURNS
Box 82, Main St.
Setauket, NY 11733
- THOMAS F. BURNS
36 Ranch Dr.
Shirley, NY 11967
- JAMES M. BUTLER
54 Barbeau Ave.
Blue Point, NY 11715
- JOHN T. CAIN
2 Squires Ave.
Port Jefferson Sta., NY 11776
- LOUIS P. CAIOLA
Gardiner Rd.
Miller Place, NY 11764
- FLORENCE CALIGURI
21 Albinet Ct.
Selden, NY 11784
- FRANCES B. CAMMAROTO
273 W. Tarpon Blvd. N.W.
Port Charlotte, FL 33952
- BERNARD CAPPEL
416 Cross Rd.
Cocoa, FL 32922
- FRANK CAPUCIO
8 Walnut Ave.
E. Farmingdale, NY 11735
- ABRAHAM CARRINGTON
719 Harrison Ave.
Riverhead, NY 11901
- ALFRED CELENTANO
237 Barton Ave.
Patchogue, NY 11772
- ORLAND C. CENTABAR
713 Pease Lane
W. Islip, NY 11795
- LLOYD CHADWICK
Shore Rd., Box 257
Remsenburg, NY 11960
- HELEN M. CHERUBINI
Middle Island Garden Apt.
32 Bailey Rd.
Middle Island, NY 11953
- ALFRED CHICKERING
49 Locust St.
Massapequa, NY 11758
- FRANK CHORZEMPA
RR #1, Panamoka Trail
Ridge, NY 11961
- JOE G. Y. CHOW
3306-2B Ptarmigan Dr.
Walnut Creek, CA 94595
- MARJORIE L. CHRISTIANSON
P.O. Box 772
Southold, NY 11971
- BJARNE CHRISTOFFERSEN
21 Pine Oaks Place
Farmingville, NY 11738
- DOUGLAS CLAREUS
125 Elm St.
Sayville, NY 11782
- KEVIN M. CLARK
Cheemaun Trail
Ridge, NY 11961
- SIGMUND CLAUSEN
Flamingo Rd.
Rocky Point, NY 11778
- GEORGE B. COLLINS
1380 Locust Dr.
Blacksburg, VA 24060
- PAUL COLSMANN
P.O. Box 628, Heino Rd.
Acworth, NH 03601
- BERNARD R. COMFORT
Box 1871, 17 Ayrshire Pl.
E. Hampton, NY 11937
- ROBERT A. CONARD
32 Ivy Lane
Setauket, NY 11733
- JOSEPH A. CONLEY
7833 Bridle Path Row
Bayonet Point, FL 33567
- RAYMOND CONNOLLY
139 Southern Blvd.
E. Patchogue, NY 11772
- KENNETH CONROY
37 Stuyvesant Ave.
Mastic, NY 11950
- HELEN H. COOKE
c/o Mrs. Robert Sorkin
1853 Marlow Pl.
Crofton, MD 21113
- CORNELIA A. CORCORAN
RFD 1, Morway's M.H. Court
Charlestown, NH 03603
- FREDERICK P. COWAN
Apt. B-125
6152 N. Verde Trail
Boca Raton, FL 33433
- ETHEL B. COX
8 Carl's Place
Riverhead, NY 11901
- MARY H. COX
24 Yaphank Rd.
Box 225
Brookhaven, NY 11719
- MARY W. COYLE
615 Main St.
Greenport, NY 11944
- BARBARA M. COZINE
Main St.
Remsenburg, NY 11960
- WILLIAM H. COZINE
1231 West Main St.
Riverhead, NY 11901
- FLORENCE W. &
JOHN R. CRAIG
Rt. 1, Box 102
Yaphank, NY 11980
- MARY A. CRAIG
46-101A Piedmont Drive
Port Jefferson Sta., NY 11776
- FRANK J. CRAVEN
9 Bridge Place
Brookhaven, NY 11719
- MARION L. CZAJA
31 S. Howells Pt. Rd.
Bellport, NY 11713
- MICHAEL CZEPAK
POB 611 - Eastwood Dr.
Miller Place, NY 11764
- FRANCIS J. DACEY, JR.
24 Grant St.
Port Jefferson Sta., NY 11776
- JOSEPH DAMM
2341 Motor Parkway
Ronkonkoma, NY 11779
- DOUGLAS P. DANIELS
160 Lakewood St.
Patchogue, NY 11772
- NELSON C. DAVIDS
1676 Pine Acres Blvd.
Bay Shore, NY 11706
- RAGNA DAVIDSEN
Box 126
Hampton Bays, NY 11946
- DONALD A. DAVIS
101 Henry Rd.
Merrick, NY 11566
- HERBERT G. DAVIS
129 Sabal Dr.
Fort Myers Beach, FL 33931
- JUDSON G. DAVIS
104 Whittier Pl.
Port Jefferson, NY 11777
- RAYMOND DAVIS
28 Bergen Lane
Blue Point, NY 11786
- WALTER H. DAWSON
P.O. Box 821
Cheriton, VA 23316
- HERMAN DECASTRO
125 Orchid Dr. N.
Jasmine Lakes
Pt. Richey, FL 33568
- DOMINICK DEGUISEPPE
23 Auburn Ave.
Shirley, NY 11967
- DONALD G. DEININGER
14 Oxford Lane
Smithtown, NY 11787
- PETER C. DELMONTE
41 Southern Blvd.
E. Patchogue, NY 11772
- JOHN J. DEMICHELE
29 Titmus Drive
Mastic, NY 11950
- ALFRED W. DELPH
33 Cook St.
Kings Park, NY 11754
- LOUIS E. DENDATO
120 Pine Neck Ave.
E. Patchogue, NY 11772
- JOSEPH DE NARDO
193 Beaver Dr.
Mastic Beach, NY 11951
- EDWARD DER MATEOSIAN
3 Brown's La.
Bellport, NY 11713
- LOUIS DEROSA
97 Head of Neck Road
Bellport, NY 11713
- JOHN J. DE VRIES
Box 196
Ridge, NY 11961
- EDWARD W. DEXTER
17 West Meadow Rd.
Setauket, NY 11785
- ANGELO A. DIDIO
19 New Jersey Ave.
Bellport, NY 11713
- JULIUS J. DIENER
127 Jayne Ave.
Patchogue, NY 11772
- ROBERT L. DILG
14 Champlain Ave.
Bellport, NY 11713
- ROBERT W. DILLINGHAM
P.O. Box 205
Aquebogue, NY 11931
- DOROTHY M. DIOGUARDO
68 Donegan Ave.
E. Patchogue, NY 11772
- JOSEPH P. DISPARTI
440 Auburn Ave.
Shirley, NY 11967
- EDWARD DIVIS
298 Fairview Ave.
Bayport, NY 11705
- P. ANSIL DIXON
1375 S. Pasadena Ave.
Lot 703
St. Petersburg, FL 33707
- MILDRED H. DOBERT
1953 SE 36 St.
Cape Coral, FL 33904
- RICHARD W. DODSON
336 Oak Leaf Circle
Santa Rosa, CA 95405
- ELIZABETH DOMINY
33 S. Howells Pt. Rd.
Bellport, NY 11713
- JEAN V. DOMISH
1A Ticonderoga Ct.
Ridge, NY 11961
- STEFAN DOPIERALA
298 Laurel Rd.
Northport, NY 11768
- MARION & THOMAS J. DORFER
79 Lexington Rd.
Shirley, NY 11967
- MARY R. DOHRMAN
Box 151
Miller Place, NY 11764
- LOUIS E. DORN
East Bartlett Rd.
Middle Island, NY 11953
- JOHN DORR
Postfach 60
8071 Grossmehring
West Germany
- JOHN J. DOWNEY
Box 423
Port Jefferson, NY 11777
- HOWARD F. DOWNS
5 River Ave.
Riverhead, NY 11901
- WILLIAM J. DRESCH
71 Bergen St.
Central Islip, NY 11722
- RUTH M. DREW
Greenwich Bay Manor, Apt. A-33
945 Main St.
E. Greenwich, RI 02818
- ROBERT A. DRYDEN
13 Sagamore Rd.
Hampton Bays, NY 11946
- EDWARD DUBANIEWICZ
Smith St.
E. Moriches, NY 11940
- WILLIAM E. DUNNE
24 Naugatuck La.
E. Islip, NY 11730
- GERALD A. DUPRE
RR1, Box 108B
Charles St.
Yaphank, NY 11980
- DOROTHY F. DURKIN
29 Amsterdam Blvd.
Cortez Windmill Village
Bradenton, FL 33507
- ORRINGTON E. DWYER
PO Box 67
Pemaquid, ME 04558
- ALFRED L. EAMOTTE
Pinelake Village, Box 15
Jensen Beach, FL 33457
- SANFORD N. EARLE
1106 Bird Bay Way
Venice, FL 33595
- WILLIAM F. EBERSPACHER
263 Cambon Ave.
St. James, NY 11780
- THOMAS EFF
217-17 102 Ave.
Queens Village, NY 11429
- JAMES C. EICHACKER
3667 Arelia Dr. N.
Delray Beach, FL 33445
- OTTO EISOLD
70-66 SE Bluebird Circle
Hobe Sound, FL 33455
- WILLIAM F. ELASIK
190 Dwight Ave. S.E.
Port St. Lucie, FL 33452
- GEORGE R. ELEAZER
55 New Jersey Ave.,
Bellport, NY 11713
- MADLYN H. ELEAZER
83 Hiddink St.
Sayville, NY 11782
- NORMAN ELLIOTT
20 Bergen Lane
Blue Point, NY 11715
- ADOLF E. EMANOVSKY
Box 1063, S. Fisk St.
Montauk, NY 11954
- FREIDA M. ENGLBERGER
Mill Rd.
Yaphank, NY 11980
- NANDOR ENLUND
Box 158, Shore Rd. W.
Mt. Sinai, NY 11766
- EDWIN ERICKSON
7 Palmetto Dr.
Shirley, NY 11967
- JOHN & S. WILMA ERIKSEN
102 W. Caribbean
Port St. Lucie, FL 33452
- ANTHONY J. FABIANO
Box 272, Bridgehampton Tpke.
Sag Harbor, NY 11963
- ALBERT FALANGO
34 Brandy Lane
Lake Grove, NY 11755
- EUGENE R. FALES
Box 211
Ridge, NY 11961
- HOWARD J. FALES
90 Dayton Ave.
Manorville, NY 11949
- GERALD FARBBER
480 Kirby Rd.
Elmont, NY 11003
- HENRY T. FARRELL
19 Bliss St.
N. Patchogue, NY 11772
- HOWARD H. FARRELL
26 Strong's Lane
E. Patchogue, NY 11772
- JAMES C. FARRELL
59 Purick St.
Bayport, NY 11705
- WILLIAM E. FARRELL
204 Jamaica Ave.
Medford, NY 11763
- JOSEPH FEDELEM
343 Connors Ave.
Naples, FL 33940
- JAMES R. FENTON
650 Pinellas Pt. So.
St. Petersburg, FL 33705
- ROBERT W. FERGUSON
15 Rosewood Lane
Wantagh, NY 11793
- EDMUNDO FERNANDEZ
Box 355
6 Orchard Neck Rd.
Center Moriches, NY 11934
- JOHN FERRERO
358 Summer Circle
Palm Beach Gardens, FL 33410
- MICHAEL FIGLIUZZI
62 Lexington Rd.
Shirley, NY 11967
- HENRY W. FINKENDEY
Medford Rd.
Ridge, NY 11961
- W. ALVORD FINN
178 S. Country Rd.
Bellport, NY 11713
- GEORGE J. FISCHER
248 Durkee Lane
E. Patchogue, NY 11772
- WILLIAM FLEISCHMAN
26 Church Lane
Aquebogue, NY 11931
- MARGARET FLEMING
249 Cedar Ave.
Patchogue, NY 11772
- JOHN J. FLOYD
11 Mott Lane
Brookhaven, NY 11719
- GEORGE FOGARTY, JR.
38 Fuoco St.
Bellport, NY 11713
- GEORGE M. FOLLS
19 Woodville Rd.
Shoreham, NY 11786
- GUSTAVE W. FORMHALS
Manorville, NY 11949
- HELEN FORSBERG
19417 Gull Blvd., Apt. A212
Indian Shores, FL 33535
- JOSEPH F. FORTUGNO
3 Calverton Road
Sound Beach, NY 11789
- DORIS M. FRANCK
12 Oakcrest Ave.
Farmingville, NY 11738
- RUTH P. FRANCOIS
24 Burchell St.
Blue Point, NY 11715
- JOHN F. FRASHER
483 Stratford Lane
Ridge, NY 11961
- SIMON FREED
89 Bedford St.
New York, NY 10014
- B. CHALMERS FRAZER
14 Cherboung Ct.
Potomac, MD 20854
- CHARLES D. FREEMAN
650 Sylvan Ave.
Bayport, NY 11705
- GERHART FRIEDLANDER
5 Lorraine Ct.
Smithtown, NY 11787
- ARTHUR FRIEDMAN
P.O. Box 5022
Hendersonville, NC 28739
- ROBERT J. FUCHS
56 Country Club Rd.
Bellport, NY 11713
- GEORGINA A. FULD
Beach Rd.
Wading River, NY 11792
- LEO J. FULHABER
70 Lyman Road
E. Patchogue, NY 11772
- MARION & ROBERT GAFFGA
9034 Gallup Rd.
Spring Hill, FL 33526
- ARTHUR GANNON
27-7 Winding Path
Manorville, NY 11949
- MARY J. GARDAYA
c/o Dreker, Apt. 3A
3527 Nostrand Ave.
Brooklyn, NY 11229
- RAYMOND GAWLOWSKI
69 Concord Rd.
Shirley, NY 11967
- CHARLES A. GAZDICK
11 Pinetree Drive
Shirley, NY 11967
- WILLIAM F. GEFERS
81 Marilyn St.
E. Islip, NY 11730
- ALBERT GEIGER
4 S. Country Rd.
Bellport, NY 11713
- WALTER GEISBUSCH
2363 Waterfall Dr.
Spring Hill, FL 33526
- LEE GEMMELL
1668 Oakhill Dr.
Escondido, CA 92027
- CHARLES L. GERLE
57 Midland Ave.
Mastic, NY 11950
- GEORGE R. GERLE
71 Norton St.
Patchogue, NY 11772
- DOROTHY GERMAN
79 Swezey St.
Patchogue, NY 11772
- FRANK K. & MARY GERMAN
4220 Yardley Ave. No.
St. Petersburg, FL 33713
- PETER GIANLOMBARDO
175 Blue Point Rd.
Selden, NY 11784
- ANN J. GILLEN
153 Clinton Ave.
Mastic, NY 11950
- FREDERICK J. GILLESPIE
11 Pine St.
Brookhaven, NY 11719
- NORMA G. GILLESPIE
Chapel Ave.
Brookhaven, NY 11719
- DONALD GILZINGER
P.O. Box 586
Miller Place, NY 11764
- SALVATORE GIORDANO
108 Fruita St.
Port Jefferson, NY 11777

G NORRIS GLASOE
14414 Bolivar Drive
Sun City, AZ 85351

T. KEITH GLENNAN
11483 Waterview
Cluster
Feston, VA 22090

ALTHEA GLINES
RD3, Box 99
Lisbon, CT 06351

CARL R. GLOVER
40C Dale Drive
Holiday Mobile Park
Tavares, FL 32778

CHARLES GOLDMAN
Box 97, N. Wading River Rd.
Wading River, NY 11792

LAWRENCE GOLSONG
5416 Isabelle Ave.
Commonwealth Mobile Estate
Port Orange, FL 32019

MABEL GONDOLA
81 Hewitt Blvd
Box 859
Center Moriches, NY 11934

WALTER L. GOODRIDGE
6 Goodridge Ave.
Riverhead, NY 11901

HENRY GORCZYCA
38 Avenue K
Kings Park, NY 11754

STANLEY GOSCINSKI
1519 N.E. 12th St.
Gainesville, FL 32601

DOMINICK GRACIA
89 Park Ave
Calverton, NY 11933

DONALD E. GRANT
115 Rogers Ave.
Westhampton Beach, NY 11978

WILLIAM L. GRAVES
26 Livingston Rd
Bellport, NY 11713

WILLIAM E. GRAY
Box 188
Hateras, NC 27943

VERNON GRECO
181 Carmen St.
Patchogue, NY 11772

FRANCES M. & FRANCIS T. GREE
81 Lexington Rd
Shirley, NY 11967

JOHN J. GREEN
123 E. 25 St.
Huntington Sta., NY 11746

MARGARET W. GREENE
7 Maple St.
Bellport, NY 11713

ANDREW GREENER
Patchogue Rd
RR#1, Box 164
Yaphank, NY 11980

ANN GRIGNON
4311 Crystal Lake Dr.
Apt 203
Pompano Beach, FL 33064

KENNETH L. GRIST
Box 65, Old Pond Lane
Remsenburg, NY 11960

FRED B. GRISWOLD
201 Chestnut St.
Port Jefferson, NY 11777

EDWARD W. GROHSE
75 Clifton Place
Port Jefferson Sta., NY 11776

DOROTHY GROOBERT
Tanners Neck La
Westhampton, NY 11977

THOMAS GUIDA
East Margin Rd.
Ridge, NY 11961

BENJAMIN A. GUIDONE
2011 William Floyd Parkway
Ridge, NY 11961

DAVID H. GURINSKY
40 Inwood Road
Center Moriches, NY 11934

GEORGE M. GUYDISH
Silas Carter Rd
Manorville, NY 11949

EDWIN HAGELBERG
2304 Royal Rd.
Hagerstown, MD 21740

JOSEPH A. HALA
7 Dual Drive
Lake Ronkonkoma, NY 11779

EUGENE E. HALIK
1800 Old Meadow Rd.
McLean, VA 22101

MARY C. HALL
RD1, Box 113, Jordan Rd.
Jordan, NY 13080

OTTO HALLER
11 Julia Circle
F. Setauket, NY 11733

JAMES A. HALLOCK
11614 Spotted Horse Dr.
Austin, TX 78759

ERIK HALSTENSEN
107 Northern Blvd.
Shirley, NY 11967

ALFRED J. HAMILTON
37 Comet Rd.
Rocky Point, NY 11778

JACK R. HAMMOND
40 Pine Neck Ave
F. Patchogue, NY 11772

HARRY L. HANKINS
25 Garfield Ave
Coram, NY 11727

HENRY B. HANSTEEN
303 Richard Place
Ithaca, NY 14850

EUGENE HARCHUCK
27 Flower Lane
Centereach, NY 11720

JOHN R. HARE
Four Seasons Estates, Lot 440
9980 Ulmerton Rd
Largo, FL 33541

EDWARD HARRIGAN
298 Gibson Dr.
Kennesaw, GA 30144

AMANDA L. HARRISON
2294 Woodside Lane #7
Sacramento, CA 95825

GEORGE T. HARRISON
1 Soundview Dr.
Shoreham, NY 11786

ERNEST HARTMANN
21 Richlee St.
Blue Point, NY 11715

LORRAINE E. HARTY
69 Cedar Lane, P.O. Box 151
Middle Island, NY 11953

MARY E. HASCASAK
c/o Wm. Hascasak
383 Woodbridge St.
Manchester, CT 06040

SVEN HASSELRIS
85 Greene Ave.
Sayville, NY 11782

LORANUS P. HATCH
Simonton Rd.
Camden, ME 04843

ROMAN A. HAWRYLAK
P.O. Box 596
Upton, NY 11973

THOMAS J. HAYCOCK, JR.
232 Broadway
Bangor, PA 18013

LEROY W. HAYWOOD, JR.
Artist Drive, Box 392
RT 1
Middle Island, NY 11953

PETER J. HEALEY
400 Forrest Rd.
Mastic Beach, NY 11951

CHARLES S. HEBRANCE
8 Aljan Dr.
Brentwood, NY 11717

FREDERICK C. HEEMSOTH
P.O. Box 501, Lynbrook Dr.
Sound Beach, NY 11789

MALCOLM A. HERBERT
135 Evergreen Lane
E. Patchogue, NY 11772

DAVID H. HETRICK
Mill Rd.
Yaphank, NY 11980

PATRICK J. HICKS
192 Artist Lake Dr.
Middle Island, NY 11953

THEODORE M. HILGEMEIER
6 Willow Pl.
Albertson, NY 11507

MARTHA J. HILL
73 Donegan Ave.
E. Patchogue, NY 11772

ROBERT H. HILL
Box 524, Beaverdam Rd.
Bellport, NY 11713

LUISE HILLEN
189 Jay Court
Holiday Park Unit 1
North Port Charlotte, FL 33595

RICHARD HIPPERLING
798 97th Ave. N.
Naples, FL 33940

WOODROW W. HOBSON
96 Quogue Rd.
Riverhead, NY 11901

ELIZABETH J. HOLLAND
P.O. Box 711, Maple St.
Henniker, NH 03242

ALBERT G. HOLTZ
11 Country Club Rd.
Bellport, NY 11713

ROBERT HOPPE
160 Sycamore Circle
Stony Brook, NY 11790

CHARLES H. HORN
58 Atlantic Ave.
Blue Point, NY 11715

WESLEY L. HOWELL
14 Terry Place
Center Moriches, NY 11934

ERNEST W. HOYLE
111 Camille St.
Lake Marionette
Hudson, FL 33568

GEORGE C. HRABAK
835 Blair St.
Bohemia, NY 11716

THEODORE P. HRYNUS
23 Bonnie Dr.
Westbury, NY 11590

CLAIRE F. HULL
80 Hampton Ave.
Mastic, NY 11950

CLIFTON P. HULSE
558 N. Howell Ct.
Riverhead, NY 11901

CHARLES F. HUNOLD
11 Arrowhead Drive
Shirley, NY 11967

EDGAR J. HUNTER
P.O. Box 575
Margaretville, NY 12455

GEORGE A. HUTSON
96 West 16th St.
Deer Park, NY 11729

FRANCES R. HYDOSKI
Box 316
Phillips Ave.
Remsenburg, NY 11960

MARY & THOMAS IAROCCI
4605 S. Priest Dr.
#251
Tempe, AZ 85282

OLE A. INGBRETSEN
1019 Village Drive
E. Patchogue, NY 11772

GERTRUDE & ROBERT R. INCE
59 Burnett Lane
Brookhaven, NY 11719

FREDERICK A. ISELI
40 Roe Ct.
Islip, NY 11751

H. STANLEY IVERSEN
c/o Herbert A. Iversen
3512 Aberdeen Place
Mojave, CA 93501

JOSEPHINE A. JACKSON
29 Park Ave.
Mastic, NY 11950

WALTER R. JACOBS
39 Donellan Road
Hampton Bays, NY 11946

DAVID D. JACOBUS
24 Academy Lane
Bellport, NY 11713

SYLVIA R. JANATER
P.O. Box 44
Rockledge, FL 32955

FRANK A. JANIK
71 Greenport Ave.
Medford, NY 11763

LEROY JEFFERSON
45 New Jersey Ave.
Bellport, NY 11713

MARY E. JEFFRIES
137-1661 Old Country Rd.
Riverhead, NY 11901

JOHN J. JENNY
620 Montauk Hwy. 10
Westhampton Beach, NY 11978

JACK E. JENSEN
3890 Darbyshire Dr.
Columbus, OH 43220

HOWARD W. JEWETT
Box 234A, Silas Carter Rd.
Manorville, NY 11934

AGNES H. JOHNSON
1100 Main St.
Upland, PA 19015

MALCOLM JOHNSON
69 Country Club Rd.
Bellport, NY 11713

NATHAN JOHNSON
378 Northville Tpke.
Riverhead, NY 11901

ROBERT T. JOHNSON
53 Herbert Circle
Patchogue, NY 11772

WILLIAM E. JOHNSTON
4 Norton Ave.
Terryville, NY 11776

FRANCIS X. JONES
5602 11th Ave. W.
Bradenton, FL 33505

SIDNEY W. JUNGREIS
35 Park Ave.
Blue Point, NY 11715

HANS J. KALBACH
German Blvd.
Yaphank, NY 11980

JOSEPH J. KALINOWSKI
98 Franklin St.
Patchogue, NY 11772

MATISLAUS KALINOWSKI
40 N. Howell's Pt. Rd.
Bellport, NY 11713

STANLEY KALINOWSKI
35 Vernon St.
Patchogue, NY 11772

MARIE L. KALOUSEK
7 Garfield Ave.
Coram, NY 11727

MARION V. KAMINSKI
10 School Dr.
Port Jefferson Sta., NY 11776

OTTO KAMMERER
1 Oakfield Rd.
St. James, NY 11780

JOHN & ROSEMARY KANUGA
38 Evergreen Lane
E. Patchogue, NY 11772

ELIZABETH J. KAPPER
R.R.#3, Box 183A
College Sta., TX 77840

ALLIE KAPLAN
Jessup Ave.
Quogue, NY 11959

LOUIS E. KARSON
190 Broadway
Shirley, NY 11967

WILLIAM E. KEATING
495 Bay Ave.
Patchogue, NY 11772

JAMES G. KEEGAN
41 Newins St.
Center Moriches, NY 11934

JOHN KEHLENBECK
Rt. 1, Gilliam Mt. Rd.
Hendersonville, NC 28739

JOHN M. KENNY
250 Lorraine Ave.
Venus, FL 33595

DORIS L. KILTHAU
110 Donegan Ave.
E. Patchogue, NY 11772

MYRTON J. KINNEY
E. Main St.
Yaphank, NY 11980

WILLIAM E. KIRKLEWSKI
27 Broadway
Mastic, NY 11950

SADIE F. KIRKUP
Long Island Ave.
Box 245
Yaphank, NY 11980

ANNA KISSEL
Box 137
70 Tanners Neck La
Westhampton, NY 11977

GEORGE KISSEL
83 Academy St.
Bayport, NY 11705

WILLIAM J. KLINGENBECK
19 Silver St.
Selden, NY 11784

FRANK J. KLUSKA
380 Granada St.
New Smyrna Beach, FL 32069

AUGUST KNECHT
536 Hickory St.
Lindenhurst, NY 11757

HAROLD E. KNUDSEN
47 Sherwood Rd.
Hampton Bays, NY 11946

KNUD D. KNUDSEN
12307 Braxfield Ct., Apt. 15
Rockville, MD 20852

OTTO KOCHMAN
38 Patchogue Dr.
Rocky Point, NY 11778

ANTHONY KOKINELIS
POB 446
Miller Place, NY 11764

LOUIS T. KOLB
43 Dunn Court
Sayville, NY 11782

GEORGE KORHUT
399 Forest Rd.
Mastic Beach, NY 11951

RUTH M. KORSOS
29 Beverly Ave.
E. Patchogue, NY 11772

PETER F. KREH
2800 Camp Mineola Rd., Box 736
Mattituck, NY 11952

THEODORE KRIEGER
209 Artist Lake Dr.
Middle Island, NY 11953

MALVINA P. KRUPSKI
P.O. Box 332, Main St.
Center Moriches, NY 11934

RAY KUCZYNSKI
706 Greenport Ave.
Medford, NY 11763

FREDERICK H. KUHN
29 Oakleigh St.
Patchogue, NY 11772

IZYDOR KUJAWSKI
187 Falcon Ave.
Patchogue, NY 11772

HORNER & MARIETTE KUPER
Box 266
Setauket, NY 11733

MARY K. KURKA
Riverhead Gardens Apt.
1355 Roanoke Ave.
Bldg. 10, Apt. A
Riverhead, NY 11901

ERNEST J. KUTSCHERA
128 Hayrick Lane
Commack, NY 11725

GEORGE KUZMACK
43 Neptune Ave.
E. Patchogue, NY 11772

WILLIAM S. KWIATKOWSKI
38 Roosevelt Blvd.
E. Patchogue, NY 11772

MORRIS LAFFER
9840-A Parkinsonia Tree Trail
Boynton Beach, FL 33436

GERALDINE M. LAINO
6 Robinson St.
Shoreham, NY 11786

MICHAEL A. LAINO
248D Prince Rd.
Rocky Point, NY 11778

MICHAEL W. LALOSH
RD #1, Box 204
Roxbury, NY 12474

WALTER & LILY S. LAMBECK
Rte. 1, Box 504
Sound Beach, NY 11789

ELOISE LANGHORNE
Box 86, Horton Ave.
Riverhead, NY 11901

HELEN M. LASAUCE
Rt. 1, 98 Lincoln Rd.
Medford, NY 11763

ADAM R. LASKY
50 Clinton St.
Center Moriches, NY 11934

ROBERT LEHN
22 Braemer Rd.
E. Setauket, NY 11733

LUDWIG LEICHT
1594-63 Ave. No.
St. Petersburg, FL 33702

GEORGE J. LEITL
29 Kellum St.
Huntington Sta., NY 11746

FRANKLIN L. LEON
304 S. Ocean Ave.
Patchogue, NY 11772

PASQUALE LETTIERI
535 Columbus Ave.
E. Patchogue, NY 11772

GEORGE LEUCHNER
394 Oxhead Rd.
Stony Brook, NY 11790

NATHAN LEVENSON
6450 Collins Ave., Apt. 302
Miami Beach, FL 33141

ALFRED P. LEWIS
c/o IRWIN
75 Spoonhill Rd.
Point Manalapan, FL 33462

WINFIELD LEWIS
28 Snedecor Ave.
Bayport, NY 11705

GEORGE W. LILJA
29 Miller Dr.
Lake Ronkonkoma, NY 11779

SU TANG LIN
552 Riverside Dr.
Apt. 2G
New York, NY 10027

ROLF J. LINDGREN
2682 SW Fairview St.
Palm Bay, FL 32907

ROBERT T. LOGAN
70 Phyllis Dr.
Patchogue, NY 11772

ROSEMARIE LONG
116 S. Haven Ave.
Medford, NY 11763

STEPHEN B. LONSKI
444 Fishel Ave.
Riverhead, NY 11901

PEGGY ANN & JOSE A. LOPEZ
16 Long Neck Blvd.
Riverhead, NY 11901

CHARLES LO RE
RFD 1, Box 593
Bailey Road
Middle Island, NY 11953

ROBERT A. LOVE
38 Bellport Lane
Bellport, NY 11713

CHARLES LUTZ
204 6th Ave. SW
Ruskin, FL 33570

CHARLES J. LYONS
Denison St.
Sag Harbor, NY 11963

VIRGINIA P. LYONS
333 Chapel Ave.
Brookhaven, NY 11719

ALICE A. MABRY
Box 989
S. Ocean Ave.
Center Moriches, NY 11934

STANLEY MACCORMACK
213 Thurms Estates
Calverton, NY 11933

DONALD MACCORNACK
Old Post Rd.
Sugar Hill, NH 03585

THOMAS MACPHERSON
PO Box 428
E. Quogue, NY 11942

FRANK MAGNANI
Ryerson Ave.
Manorville, NY 11949

HARRY MAILE
84 Roe Ave.
E. Patchogue, NY 11772

JOHN R. MALAKIE
103 Carswell Circle
Sun City Center, FL 33570

DONALD MALLORY
10318 Mission Lane
Sun City, AZ 85351

TIMOTHY MALLOY
475 Long Island Ave.
Medford, NY 11763

HELEN Z. MALONEY
55 Mt. Pleasant Rd.
Smithtown Branch, NY 11787

JOSEPH MAMMINA
Box 234
Rocky Point, NY 11778

ALBERT MANGER
Shagwong Dr.
Sound Beach, NY 11789

WALTER J. MARESCO
90 Robinson Ave.
Medford, NY 11763

WARREN K. MARKS
8 Marlboro Dr.
Port Jefferson Sta., NY 11776

RENE J. MASSARD
17 Whitewood Dr.
Rocky Point, NY 11778

LEONARD MAUCELLI
161 Union Ave.
Holbrook, NY 11741

RICHARD G. MAYER
91 Fairview Ave.
Islip Terrace, NY 11752

FRANK MAZZEO
P.O. Box 8822
Naples, FL 33941

JOHN T. MCCAFFERTY
160 Jayne Ave.
Patchogue, NY 11772

HARVEY MCCHESENY
44 Bellport La.
Bellport, NY 11713

MALCOLM MCCRUM
6 Oak Tree Dr.
Islip, NY 11751

DAVID MCCUTCHEON
28 Fireplace Neck Rd.
Brookhaven, NY 11719

GEORGE L. MC GANN
Montauk Highway
Water Mill, NY 11976

BRITA U. MCGONIGLE
Middle Island Blvd.
Middle Island, NY 11953

JAMES W. MCINTOCH
671 Sandra Ave.
W. Islip, NY 11795

FRANK J. MCKAY
1835 Neptune Drive
Englewood, FL 33533

DENNIS F. MCKENNA
RD #1, Box 622A
Delhi, NY 13753

SHIRLEY & JOSEPH MCKENNA
Rt. 1, Box 75-124
Garden City, SC 29576

MICHAEL MCKEOWN
15 Mott La.
Brookhaven, NY 11719

VIOLA N. MCKENZIE
69 Williams La.
Middle Island, NY 11953

THOMAS F. MCKINLEY
5439 Chedworth Dr.
Charlotte, NC 28210

LOWELL MCLEAN
285 Yaphank Rd.
E. Patchogue, NY 11772

JOHN C. MCMAHON
5 High Street
Sayville, NY 11782

HELEN L. MCNALLY
5214 Bucco Reef Rd.
New Bern, NC 28560

JULIA MCRAE
104 N. Paquatuck Terr.
E. Moriches, NY 11940

ELIZABETH MEDD
Box 742, Christian Ave.
Stony Brook, NY 11790

DOROTHY MEEHAN
RFD 541A
Wading River, NY 11792

FREDERICK MEIER
Gabriel Mills Rd
Wading River, NY 11792

FRED MEISENZAHL
Box 131
Shannon Blvd.
Yaphank, NY 11980

PAUL J. MELVIN
4307 70th Court North
Palm Lake Estates
N. Riviera Beach, FL 33404

MADELINE & ANTHONY MEO
333 Oak St.
Patchogue, NY 11772

PIERRE MERCIER
225 Tahlulah Lane
W. Islip, NY 11795

EARL E. MESAROS
40 Vee Jay Drive
Shoreham, NY 11786

IRWIN A. MEYER
Dogwood Dr., P.O. Box 318
Wading River, NY 11792

JOSEPH T. MEYER
56 Harris St.
Patchogue, NY 11772

EDWARD MICHAELIS
79 Woodside Dr.
Mastic Beach, NY 11951

CHARLES A. MIGNEREY
126 Vanderbilt Ave
Ronkonkoma, NY 11779

RICHARD R. MIKO
206 Union Ave.
East Patchogue, NY 11772

VERONICA P. MIKO
206 Union Ave.
East Patchogue, NY 11772

JULIUS MILAU
17 Hillcrest Ave.
Pt. Jefferson, NY 11777

FRANCIS T. MILES
4 Shore Rd.
Bellport, NY 11713

MADDIE MILES
RR#1, Box 13, Main Rd.
Mattituck, NY 11952

ARTHUR J. MILEY
Box 70, Swezey Lane
Middle Island, NY 11953

ANTONIO MINARDI
90 Lakeland Ave.
Patchogue, NY 11772

ARTHUR L. MINARDI
Box 213
Ridge, NY 11961

KURT F. MINATI
65 Timber Pt. Dr.
Northport, NY 11768

AMBROSE MISCAVISH
620 53rd Ave. So.
St. Petersburg, FL 33705

DOUGLAS C. MITCHELL
555 Sylvan Ave.
Bayport, NY 11705

ROBERT A. MITCHELL
Rt. 2, Box 186A
Lavonia, GA 30553

SALVATORE J. MODESTO
8 Washington, Ave.
Smithtown, NY 11787

ELMER J. MONTI
Miller Ave., Box 304
E. Moriches, NY 11940

HENRY L. MONTVILLE
3940 NW 42 Ave.
Lauderdale Lakes, FL 33319

GEORGE MOONEY
24 Quebec Drive
Huntington Sta., NY 11746

DAVID MORRIS, JR.
35 Bell Ave.
Blue Point, NY 11715

JOSEPH & HELEN G. MOTTL
Mollie Blvd.
Holbrook, NY 11741

THOMAS A. MULLANY
194 Norwood Ave.
Port Jefferson Sta., NY 11776

SYLVIA MURRAY
73 Bay Bright Dr.
Shirley, NY 11967

CONSTANCE M. NAGLE
902D Caminto
Madrigal
Carlsbad, CA 92008

LOUISA NASH
Park Lake Estates & Marina
318 Lake Shore Dr.
Hallandale, FL 33009

CASIMIR Z. NAWROCKI
1377 Hinton St.
Port Charlotte, FL 33952

WILLIAM A. NEAL, SR.
214 W. 36th St.
Wilmington, DE 19802

VIRGINIA L. NEILL
265 S. Country Rd.
Brookhaven, NY 11719

ARTHUR E. NELSEN
128 McKinley Dr.
Mastic Beach, NY 11951

ALFRED NELSON
Beaver Dam Rd.
Brookhaven, NY 11719

NORMAN NELSON
120 Quogue Rd.
Riverhead, NY 11901

THOMAS A. NEWHAM
15 Nottingham Ave.
Patchogue, NY 11772

ROBERT T. NICHOLAS
380 Adirondack Dr.
Farmingville, NY 11738

LOUIS J. NICOLOSI
6558 E. Koralee Way
Tucson, AZ 85710

ALFRED F. NIELSEN
Twin Pond Rd., Box 301
Montauk, NY 11954

JOSEPHINE NOBILE
181 South Country Rd.
Bellport, NY 11713

HENRY P. NOEHREN
22 Bieseler Rd.
Bellport, NY 11713

ALBERT V. OHLSEN
3569 Lake Bayshore Dr.
Apt. J-209
Bradenton, FL 33505

ERNEST C. OKRESS
2400 Chestnut St. #307
Philadelphia, PA 19103

EDMUND E. OKULA
Main Rd.
Orient, NY 11957

HOWARD D. OLSON
P.O. Box 273, Dartmouth Rd.
Shoreham, NY 11786

AMELIA L. OROPELLO
54 Charles Rd.
E. Patchogue, NY 11772

JAMES OSTER
329 Lincoln Ave.
Sayville, NY 11782

CARL C. OTTO
26 S. Coleman Rd.
Centereach, NY 11720

IRENE OZOLS
1805 Roswell Rd.
42L
Marietta, GA 30062

FRANK J. PACHINGER
83 Gaymore Rd.
Port Jefferson Sta., NY 11776

PETER PAIGE
PO Box 26, 2 Gerard St.
Bellport, NY 11713

FRANCIS G. PAINTER
359 Fishel Ave.
Riverhead, NY 11901

STEPHEN A. PALERMO
522 SW 18th St.
Boynton Beach, FL 33435

HARRY PALEVSKY
327 S. Country Rd.
Brookhaven, NY 11719

FREDERICK O. PALLAS
60 Everett St.
Patchogue, NY 11772

THOMAS PAPA
2227 Rose Lane
Clearwater, FL 33516

ADAM PASKIEWICZ
1534 Meadowlark Rd.
Springhill, FL 33526

WILLIAM J. PATANJO
15 General McLean Dr.
Bellport, NY 11713

MILDRED PAVELEC
373 Vermont St.
West Melbourne, FL 32901

FRANCIS C. PECHAR
6 River Rd.
Calverton, NY 11933

MANUEL PEDROSO
790 N. Adele St. #B
Orange, CA 92667

JOHN A. PENNY
1914 Towanda Trails
Athens, TN 37303

DON PERDIKOYLIS
Box 176, Maple Rd.
Wading River, NY 11792

ALICE M. PEREZ
142 Stanley Dr.
Centereach, NY 11720

MICHAEL J. PERRIER
PO Box 254
Center Moriches, NY 11934

JOHN H. PETERSEN
233D Blackpool Court
Ridge, NY 11961

KARL E. PETERSON
21 Cherry Lane
Port Jefferson Sta., NY 11776

RUTH PETIT
91 N. Howell's Pt. Rd.
Bellport, NY 11713

HENRY PETRULE
68 N. Division Ave.
Blue Point, NY 11715

JACK E. PHILIPS
Box 44, Walnut Ave.
E. Quogue, NY 11942

ROBERT H. PHILIPS
Box 382, Basket Neck Lane
Remsenburg, NY 11960

SALVATORE PIAZZOLA
1550 Nebraska St. NE
Palm Bay, FL 32907

JAMES PLASTIRAS
14 Sycamore La.
Commack, NY 11725

EDWARD A. PLUTA
230 King Rd.
Rocky Pt., NY 11778

IRVING J. POLK
236 Jayne Ave.
Patchogue, NY 11772

WILLIAM POLLACK
56 Broadway Ave.
Mastic, NY 11950

BUDD & DOROTHY S. POLLOCK
833 Auburn Blvd
Port Charlotte, FL 33948

CHARLES W. PORCARO
Lake Kathryn Estates
880 Tumbleweed Lane
Casselberry, FL 32707

CHARLES K. POSPISIL
8203 Heartwood La.
Bayonet, FL 33567

LOUIS K. & ANNA C. POTTER
370 Oak St.
Patchogue, NY 11772

ROBERT W. POWELL
The Pasture
Rte. 3, Box 78
Fairhope, AL 36532

CARL J. POZGAY
7 Walnut Dr.
Shoreham, NY 11786

CHARLES PUKIT
8 Anderson Rd.
Hampton Bays, NY 11946

DENNIS PULESTON
Meadow Lane
Brookhaven, NY 11719

FRANK PULKA
River Rd.
Calverton, NY 11933

RICHARD M. QUICK
45Q Sound Ave.
Riverhead, NY 11901

BRUCE W. QUINN
24 Kelsey Ave.
Box 482
Port Jefferson Sta., NY 11776

JOHN W. QUINN
63 Paumanake Rd.
Blue Point, NY 11715

KURT RABE
9 Shady Lane
Coram, NY 11727

GEORGE W. RADLHAMMER
561 Yale Rd.
S. Venice, FL 33595

ANGELO RAFANIELLO
23 Carrington Dr.
East Northport, NY 11731

UNA K. RANDALL
14 Meadow Lane
Brookhaven, NY 11719

CHARLOTTE & EDWIN RAPPE
5574 Pendlewood Lane
Ft. Meyers, FL 33907

PETER RATYCA
Box 452, Devon Lane
Middle Island, NY 11953

DYSART A. RAVENHALL
Box 308, Edgewood Rd.
Quogue, NY 11959

SIDNEY RAYNOR
31 Barton Ave.
Patchogue, NY 11772

PHILLIP J. REANY
342 Carnation Dr
Shirley, NY 11967

JAMES E. REBMAN
745 Haywaters Rd.
Cutchogue, NY 11935

RITA M. RECH
Fulton Ave., Box 256
Mastic, NY 11952

LEO H. REDMOND
Rt. 4, Box 30T
Delunak Springs, FL 32433

CHESTER B. REED
308 Wendi Lane
Ruskin, FL 33570

CLIVE E. REED
1540 Bonair St.
Clearwater, FL 33515

ANDREW J. REICHLEN
PO Box 133
Mt. Sinai, NY 11766

WILLIAM G. REID
2834 Crosley Dr. E.
Villa I
West Palm Beach, FL 33406

EDWARD G. & EUNICE REILLY
Old Gate Rd.
P.O. Box 1643
Morehead City, NC 28557

GEORGE R. REISERT
Tallmadge Rd
RFD#1, Box 533
Northport, NY 11768

WILLIAM E. REMBT
154 Northern Blvd.
St. James, NY 11780

FRANK N. REMISZEWSKI
815 Roanoke Ave.
Riverhead, NY 11901

EDGAR O. REYNOLDS
Box 367
Oriental, NC 28571

MARIE REYNOLDS
395 Sunnyside Rd.
Smyrna, DE 19977

RAYMOND H. RHEAUME
711C Wooton Court
Lakehurst, NJ 08733

JOSEPH B. RHODES
46 Lakewood St.
Patchogue, NY 11772

POWELL RICHARDS
436 Gatewood Dr.
New Bern, NC 28560

JUDITH C. RIDGEWAY
Star Route 3, Box 1324A
Hernando, FL 32642

JOHN RIGLICK
221 S. Filmore
Beverly Hills, FL 32665

THEODORE RIMLER
16 Wiggs Rd.
Nesconset, NY 11767

DOROTHEA RIPPERGER
392 S. Country Rd.
Brookhaven, NY 11719

WESLEY RIPPERGER
Box 144
Port Jefferson Sta., NY 11776

JOSEPH RISLEY
7-13 Greenway
Manorville, NY 11949

OLIVE K. RITTER
73 Ohio Ave.
Medford, NY 11763

FRANK J. RIZZO
4630 E. Franklin Rd.
Norman, OK 73071

MARY ANN ROBERTS
Box 321, Barton Manor Court
Bartonsville, PA 18321

CHARLES V. ROBINSON
228 Sheldrake Ave.
Port Jefferson, NY 11777

KELSEY ROBINSON
99 Peter Lane
Westhampton Beach, NY 11978

KENNETH F. ROCKWELL
48 Clinton Ave.
Patchogue, NY 11772

SANFORD J. ROE
5 Atlantic St.
Brookhaven, NY 11719

JOHN M. ROECKLEIN
P.O. Box 361
Patchogue, NY 11772

ARNOLD M. ROESCH
Box 30, North Street
Manorville, NY 11949

EDWARD ROGERS
804 S.E. Bianca Drive
Palm Bay, FL 32905

JOHN E. ROGERS
128 Conklin Ave.
Patchogue, NY 11772

WILLIAM A. ROGERS
28-10 Winding Path
Manorville, NY 11949

AGNES ROMARD
7306 Por Circle
Orlando, FL 32807

SALVATORE ROSATO
104 Lake Shore Drive
Hallandale, FL 33009

ARNOLA R. ROSE
206 Bayview Terrace
Port Jefferson, NY 11777

WILLIAM M. ROSS
610 Eighth Ave.
E. Northport, NY 11731

JAY C. ROWLAND
90 Carmen Street
Patchogue, NY 11772

WILLIAM RUBINSON
24 White Pine Drive
E. Patchogue, NY 11772

CHARLES RUEGE
1567 Oxford Rd
Wantagh, NY 11793

ANTHONY RUSSO
206 Blue Point Rd
Farmingville, NY 11738

JAMES J. RYAN
396 Oakwood Ave.
W. Islip, NY 11795

ALBERT SALE TROS
11 Roe Ave.
E. Patchogue, NY 11772

SALVATORE SAULLE
18 Epsom Course
Brookhaven, NY 11719

JAMES H. SAULS
1842 Tiburon Bend
Lewisville, TX 75067

MARTIN SAUTTER
Box 59
Dundee, NY 14837

VIRGINIA SAYRE
5 Titus Lane
Bellport, NY 11713

JOSEPH SCESNY
RR 1, Box 443, Middle Island Rd.
Yaphank, NY 11980

ROBERT P. SCHAEFER
78 Namkee Rd.
Blue Point, NY 11715

THOMAS B. SCHEUERER
50 Pauchogue Ave.
E. Islip, NY 11730

LAWRENCE SCHIRO
54 Country Club Rd.
Bellport, NY 11713

LOUIS SCHLOSBERG
320 NE 12 Ave.
Hallandale, FL 33009

CHARLES W. SCHMIDT
763 N.E. Emerson St.
Port St. Lucie, FL 33452

ROBERT D. SCHMIDT
149 Pine St.
E. Moriches, NY 11950

FREDERICK SCHNEIDER
P.O. Box 399
Paisley, FL 32767

DOROTHY SCHROEDER
21 Second Ave.
Port Jefferson, NY 11777

GEORGE H. SCHUETTE
RR 1, Box 66B
Parker Rd.
Lockwood, NY 14859

HENRY SCHWARTZ
5329 NW First Ave.
Pompano Beach, FL 33064

GEORGE E. SCHWENDER
7 Cornell Rd.
Shoreham, NY 11786

WILLIAM SCHWENZER
220 Norwood St.
Islip Terrace, NY 11752

GEORGE W. SCOTT
27 Windsor Ct.
Centereach, NY 11720

VALBORG SEGERDAHL
6309 Lilac Place
Sarasota, FL 33581

JOSEPH SEITZ
133 Boyle Rd.
Selden, NY 11784

ANNA M. SELL
RFD 1, Box 226A
Andover, NH 03216

JOHN P. SEMKUS
Harrison St., Box 1081
Sag Harbor, NY 11963

ESTHER B. SEMM
115 California Ave.
Port Jefferson, NY 11777

ROBERT H. SERRELL
Rt. 2, So. Redwood Dr.
Sag Harbor, NY 11963

ELLIOTT N. SHAW
Unterer Rheinweg 46
4057 Basel
Switzerland

EDWARD E. SHELTON
P.O. Box 584
Setauket, NY 11733

FREDERICK SILKWORTH
103 Whittier Pl.
Pt. Jefferson, NY 11777

MARY & PAUL SIMACK
Box 329, Rte. 1
Manorville, NY 11949

JOAN J. SIMECEK
14 Franklin St.
Patchogue, NY 11772

IRVING A. SINGER
18 The South Lot Rd.
Smithtown, NY 11787

CLYDE R. SIPE
250 S.W. Lucero Dr
Port St. Lucie, FL 33452

ETHEL G. SKINNER
208 Park St.
New Canaan, CT 06840

MORRIS SLAVIN
c/o Frances Sherwin
284 Troy Del Way
Williamsville, NY 14221

MAXWELL M. SMALL
7 Otis Lane
Bellport, NY 11713

DOUGLAS W. SMITH
6 Magellan Ave.
Kings Park, NY 11754

HAROLD H. SMITH
Tower Hill Rd.
Shoreham, NY 11786

LYLE W. SMITH
112 Arlington Ave.
Port Jefferson, NY 11777

MARY S. SMITH
15 Cove Lane
Port Jefferson, NY 11777

RONALD SMITH
P.O. Box 246
Hiram, ME 04041

CHARLES SMOL
168 Pine Neck Ave.
E. Patchogue, NY 11772

JOSE SOLER
65 Blossom Ave.
Holtsville, NY 11742

SUSANNA SOLOVEY
53 Seacliffe Ave.
Miller Place, NY 11764

WALDEMAR O. SORENSON
P.O. Box 103
Yaphank, NY 11980

NICHOLAS SOWIAK
23 Thompson Hay Path
Setauket, NY 11733

RHODA C. SPARROW
11 Leisurely Lane
Bellport, NY 11713

ROBERT W. SPENCER
710 Post Ave.
Bellport, NY 11713

EDWARD SPERRY, JR.
Medford Road
Ridge, NY 11961

GILBERT G. SPIRA
8 Magnolia La.
Miller Place, NY 11764

MARY SPIRITO
68 Stevens Ave.
Yonkers, NY 10704

CHARLES N. SPONHEINER
39 Sycamore St.
Patchogue, NY 11772

RADFORD J. SPRAGUE
Rt. 6, POB 270
Hartwood, VA 22471

JAMES STAFETAS
13019 Coxswain Court
Hudson, FL 33567

ROBERT E. STAFFORD
61 N. Howells Pt. Rd.
Bellport, NY 11713

WILLIAM F. STAFFORD
78 Dana Ave.
Mastic, NY 11950

LOUIS G. STANG
13769 Exotica Lane
West Palm Beach, FL 33414

JAMES G. STANGBY
Sturgis Rd., PO Box 145
Shoreham, NY 11786

JULIUS STAPON
Box 96, Church Lane
Aquebogue, NY 11931

STANLEY A. STARON
Box 97
Mattituck, NY 11952

IRENE G. STEELE
12 Arthur Ave.
Blue Point, NY 11715

JOHN R. STEHN
8 Harbor Hills Dr.
Port Jefferson, NY 11777

MILTON STEINBURG
140J LaBonne Vie Dr. West
E. Patchogue, NY 11772

HERMAN STELLING
135 Maple Ave.
Patchogue, NY 11772

ANTHONY STEVENS
4948 NW 48 Ave.
Fl. Lauderdale, FL 33313

RESSI STEWART
137 Hilltop Dr.
Brentwood, NY 11717

ERNEST M. STIHEL
1701 Pinehurst Rd., Villa-16F
Dunedin, FL 33528

IRA W. STILL, JR.
36 Hill St.
Patchogue, NY 11772

MARION M. STILL
24 Cottage Ave.
Bay Shore, NY 11706

GEORGE M. STOLL
546 Gillette Ave.
Bayport, NY 11705

RICHARD D. STONER
Hawkins La.
Brookhaven, NY 11719

MICHAEL J. STRAVINO
76 Elizabeth Dr.
Bethpage, NY 11714

VINCENT G. STUMPO
29 Daisy St.
N. Patchogue, NY 11772

ERIK SUNBERG
01180 Kaakstrand Porto
Finland

PATRICIA SUTHERLAND
Box 329, Rte. 1
Lake Grove, NY 11755

LISPENARD SUYDAM
Box 44
South Bristol, ME 04586

JERRY SVOBODA
Wildwood Shore Estates
Beach Rd., Box 392
Wading River, NY 11792

FLORIAN SWAN
206 S. Harbor De.
Holmes Beach, FL 33510

WILLIAM E. SWATTON
126 Lincoln Rd.
Medford, NY 11763

THOMAS E. SWEDA
72 Terry Rd.
Patchogue, NY 11772

ARTHUR M. SWENSON
186 Hudson Ave.
Lake Ronkonkoma, NY 11779

ERNEST SYKES
10 Pine St.
Brookhaven, NY 11719

JOSEPH SYLVESTER
105 Cedarhurst Ave.
PO Box 152
Medford, NY 11763

EDWIN SZCZEPANIK
13235 Drayton Dr.
Spring Hill, FL 33526

CASIMIR SZPULECKI
PO Box 126
Selden, NY 11784

STEPHEN M. TAKATS
56 Gould Rd.
Centereach, NY 11720

ELTON E. TANK
36 Newins St.
Center Moriches, NY 11934

GERALD F. TAPE
6717 Tulip Hill Terrace
Bethesda, MD 20816

RALPH P. TAYLOR
423 S. Country Rd.
Brookhaven, NY 11719

ALFREDO TEXEIRA
35 Walnut Ave.
Patchogue, NY 11772

WILLY H. THATNER
69 Sally Lane
Ridge, NY 11961

CHARLES O. THEISEN
15 Chichester Ave.
Center Moriches, NY 11934

EWALD O. THEWKE
Carter Bridge Rd.
East Durham, NY 12423

CARL R. THIEN
8 Eastview Dr.
Sound Beach, NY 11789

CHARLES J. THIESEN
55 Champlin St.
Lake Ronkonkoma, NY 11779

OSCAR A. THOMAS
Box 40
Yaphank, NY 11980

REESE D. THOMAS
56 Lakeland Ave.
Sayville, NY 11782

SIDNEY O. THOMPSON
48 Willow Ave.
Hempstead, NY 11550

ALAN M. THORNDIKE
2A Gerard St.
Bellport, NY 11713

JOHN J. TILLEY, JR.
11436 S.E. 208th St., No. 118
Kent, WA 98031

JACOB TILLINGER
321 Prospect Ave.
Apt. B5
Hackensack, NJ 07601

FRED G. TIMPE
116 Buffalo Ave.
Medford, NY 11763

ALICE TINGLER
202 Altamont Rd.
Anderson, SC 29621

CHARLES TOMESCH
Box 293, Mt. Vernon Ave.
Medford, NY 11763

ANTHONY P. TORRE
Box 523, Lake Griffin St.
Lady Lake, FL 32659

MARION S. TOWER
Newport Beach Blvd.
East Moriches, NY 11940

JOHN TREMSKI
River Rd.
Calverton, NY 11933

RINO TULIPANO
1 Pennsylvania Ave.
Brentwood, NY 11717

CLARENCE M. TURNER
355 SW Cherryhill Rd.
Port St. Lucie, FL 33453

GEORGE TURPIN
RT. 20-20, Wilson Ave.
Middle Island, NY 11953

W. ANSEL TUTHILL
Box 94, Quogue Point
Westhampton Beach, NY 11978

WILLIAM A. TUTTLE
Box 94, Main Rd.
Aquebogue, NY 11931

NIKOLAIS UPENIEKS
165 Tudor Rd.
Centereach, NY 11720

JOHN C. VALEK
Box 147
Jamesport, NY 11947

VICTOR V. VALERIO
57 Maple St.
Blue Point, NY 11715

MARTIN VAN LITH
Rt. 3, Box 260
Pittsboro, NC 27312

CHARLES VAN VALKENBURGH
34 Herbert Circle
Patchogue, NY 11772

MARGARET P. VAN WORMER
20 Gail Dr.
Lake Ronkonkoma, NY 11779

CLGA C. VARIO
85 E. Molly Pitcher Lane
Yorktown Heights, NY 10598

VICTOR J. VITKUN
203 Second St.
St. James, NY 11780

MILDA VITOLS
42 Landing La.
Port Jefferson, NY 11777

RICHARD L. VOGT
Cedar Pointe D-1
2929 SE Ocean Blvd
Stuart, FL 33494

FRANK VOLNY
380 Broadway Ave.
Holbrook, NY 11741

GEORGE C. WAGNER
1636 Arbor Dr.
Clearwater, FL 33516

GEORGE C. WALDBAUER
117 Chapel Ave.
E. Patchogue, NY 11772

ALEXANDER WALKER
41 Maple Ave.
Shirley, NY 11967

WILLIAM G. WALKER
350 Sugar Pine Dr.
Pinehurst, NC 28374

WILLIAM J. WALSH
25 Nautilus Dr.
Hampton Bays, NY 11946

KENNETH C. WARD
236 Mt. Vernon Ave.
Medford, NY 11763

WILLIAM WARE
Box 144
Leonardsville, NY 13364

JOSEPH S. WASHBURN
285 Greene Ave.
Sayville, NY 11782

STEPHEN T. WASKI
13209 Drayton Drive
Spring Hill, FL 33526

CLAUD WEAVER
262 Dunton Ave.
E. Patchogue, NY 11772

MARIE & HENRY WEINMANN
Sun Lake, 1235 Sun Meadow Lane
Grand Island, FL 32735

FLORENCE WEISS
3207 Wiley Ave.
Melbourne, FL 32901

RICHARD WEISS
67 Peeker Ave.
Mastic Beach, NY 11951

FRANK P. WELCH
67 Scotch Pine Dr.
Central Islip, NY 11722

CHRISTOPHER WENNES
6 Hall Court
Farmingdale, NY 11735

ALONZA P. WERNER
401 Eastwood Blvd.
Centereach, NY 11720

ROBERT WESSEL
199 N. Ocean Ave.
Patchogue, NY 11772

GEORGE M. WEST
PO Box 234
Garrison, NY 10524

JOSEPH H. WHELAN
15 Lakeview Dr.
Lake Ronkonkoma, NY 11779

GEORGE S. WHITE
33 Date St.
Central Islip, NY 11722

JOHN G. WHITE
809 Peaksview St.
Bedford, VA 24523

LILIAS L. WHITE
44 Pine Court
Riverhead, NY 11901

CELIA WILBER
5 Stony Brook Ave.
Stony Brook, NY 11790

EDWARD F. WILD
195 Adrienne Dr.
Bay Shore, NY 11706

HAZEL W. WILLIAMS
286 No. Ocean Ave.
McPeak Adult Home
Patchogue, NY 11772

MIA WILLIAMSEN
167 McKinley Dr.
Mastic Beach, NY 11951

WALTER F. WILM, SR.
74 Mt. Vernon Ave.
Patchogue, NY 11772

WALTER WILSHUSEN
Box 72A, RFD 1
Mattituck, NY 11952

CARL W. WINGARD
255 Washington Ave.
Patchogue, NY 11772

ROBERT E. WIRTENSON
5 Lever Place
Plainview, NY 11803

HELEN R. WISNOSKI
61 W. Shore Dr.
Patchogue, NY 11772

RICHARD WISWALL, JR.
331 Beaver Dam Rd.
Brookhaven, NY 11719

WILLIAM F. WOCEL
12017 Cartwright Dr.
Hudson, FL 33567

JOSEPH WOJCIECHOWICZ
10 Sarah Dr.
Hauppauge, NY 11788

ANDREW W. WOLKE
6 Sherwood Dr.
St. James, NY 11780

JOHN H. WOLTERS
c/o Hoyer
2095 Oxford Place
Merrick, NY 11566

BURTON A. WOODS
27 Ridgeview Place
Mt. Sinai, NY 11766

GEORGE W. WOODSON
406 Oakland Dr.
Riverhead, NY 11901

HAROLD A. WORWETZ
Bayberry Lane
North Haven
Sag Harbor, NY 11963

ARTHUR B. WRIGHT
Main St.
Yaphank, NY 11980

RUTH V. WRIGHT
1477 Straight Path
Wyandanch, NY 11798

FANNIE WYCHE
Rt. 2, Hobyson Dr., Box 14
Mattituck, NY 11952

SHIZUKO YAGI
2914 Sahalee Dr. E.
Redmond, WA 98052

GEORGE A. YENGEL
12 Firdale St.
Centereach, NY 11720

LUKE C. YUAN
15 Claremont Ave.
New York, NY 10027

JOHN G. ZAHRA
162 High View Dr.
Calverton, NY 11933

LEO P. ZALOGA
2 Shawnee Trail Cimerron
Myrtle Beach, SC 29577

ROBERT W. ZANE
16 Garden Lane
Centereach, NY 11720

EDWARD & LOIS ZEIDLER
118 Oregon Ave.
Medford, NY 11763

DANIEL D. ZELEM
17 Colony Dr.
West Sayville, NY 11796

EDWARD H. ZELLNER
1661 Old Country Rd.
Riverhead, NY 11901

WILBUR E. ZENKER
40 Stephanie Ave.
Patchogue, NY 11772

EDNA W. ZOLLO
84 Log Rd.
Patchogue, NY 11772

MICHAEL F. ZUKAS
Bayberry Rd.
Southold, NY 11971

GEORGE L. ZUKOWSKI
1137 Lantern Light
Port Charlotte, FL 33952