

# the Bulletin Board

VOLUME 13 - NUMBER 27

Published by BNL Personnel Office

MARCH 9, 1960

## Fringe Patter

### MAJOR MEDICAL INSURANCE COVERED EXPENSES

The term COVERED EXPENSES means "necessary and reasonable expenses incurred, with the approval of a legally qualified physician or surgeon," and include:

1. expenses incurred for treatment by a legally qualified physician or surgeon;
2. expenses incurred for hospital confinement;
3. expenses incurred for nursing services by a registered nurse other than a member of the employee's family;
4. expenses incurred for medical or surgical services and supplies.

The insurance company has the right and obligation to determine whether expenses are necessary and reasonable. For example, if you pay \$10.00 for a prescription which normally costs \$2.00, the insurance company can rightly question whether or not the expense is reasonable. Likewise, all other covered expenses, including physicians' and surgeons' fees, must be necessary and reasonable. If you are charged \$500 for a normal tonsillectomy without complications, the insurance company might question the charge since the normal fee for this operation is less than 50% of this charge.

Consequently, if you or a member of your family is to undergo treatment or an operation, it is to your best interests to discuss over-all costs with your physician or surgeon. They will gladly discuss the matter with you so that you may be fully aware of the expenses involved.

### APRIL FOOL'S DANCE - APRIL 1

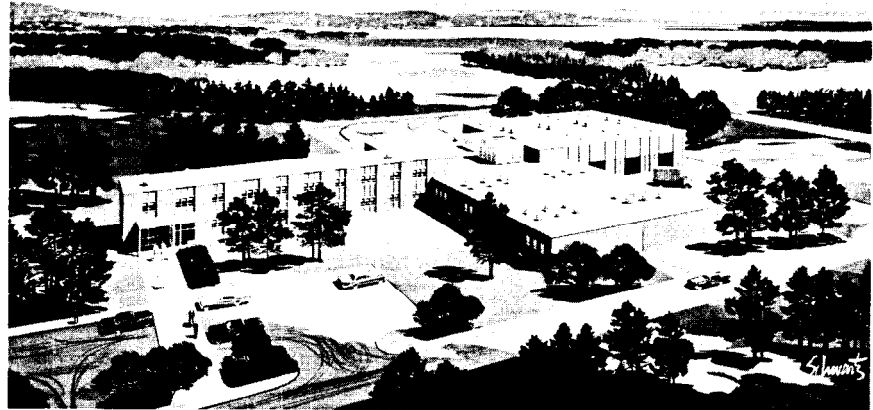
A dance committee has been formed and plans are well underway for a gala April Fool's Dance to be held Friday, April 1, in the Gym. Tickets will be available at the door at the following prices: Employee - \$1.50; Employee's Escort - \$1.50; Guests - \$2.00.

A five-piece orchestra, "The Hi-Fives", will entertain from 9 p.m. until 2 a.m. Circle your calendar now - invite your best beau or gal and plan to attend.

More help is needed on the committee. You may volunteer by calling G. Sabine, Ext. 391 or Carmen Spirio, Dance Committee Chairman, Ext. 686.

Watch THE BULLETIN BOARD for further details.

## NEW NUCLEAR ENGINEERING BUILDING UNDER CONSTRUCTION



Shown above are a rendering of the new Nuclear Engineering building (Phase I) and a view of the recently completed steel work for the building, which is being constructed on Rutherford Drive, diagonally opposite the Hot Laboratory.

It is expected that Phase I will be completed by April, 1961. It will be an important step in consolidating the physical set-up of the Nuclear Engineering Department and providing modern, adequate laboratory and office space. At the present time the department is housed in nineteen different buildings. Most of these buildings are wooden World War II Army barracks. These are often inadequate in size and at times experimental work has been hampered by inadequate power and water supply. Wooden buildings are particularly undesirable for housing high temperature experiments, which comprise a sizable portion of Nuclear Engineering's work, because of the fire hazard.

The new building will be occupied primarily by some of the members of the chemistry and chemical engineering divisions, now located in the Hot Laboratory and Buildings 354, 473, 137, and 197. It will provide facilities for 75 people. Estimated cost is \$1,879,000.

(Continued on Page 2)

## NUCLEAR ENG. - (Cont'd)

The building will be a cross-shaped structure; development labs, chemistry labs, shops and offices will each be housed in one of the four wings. The building will consist of 38,000 square feet gross, 24,000 square feet net working space. In addition to the laboratories, shops and offices, the building will house a stockroom, counting room and instrument maintenance area.

The four large chemical engineering development laboratories, in one wing of the building, will each be 40 feet by 50 feet with an eighteen foot clear ceiling height. All heating and lighting is recessed in the ceiling and in each bay there is provision for piping liquid radioactive waste direct to glass lined hold-up tanks, located in the vault outside the building. Radioactive gases will be piped to the Reactor stack. Each lab will have a power distribution station (440 V, three phase) steam, water, compressed air and gas. Each development lab has access to a service corridor and to the service apron.

The chemistry labs also incorporate the most modern design and equipment and will provide vastly improved experimental facilities. The laboratories' dimensions will be 24 feet by 32 feet. In each lab all hoods are located on one wall with provision for additional hoods should they be required and space has been provided for the later installation of air conditioning units to accommodate any excessive heat loads generated in the laboratories through the use of furnaces, etc.

The chemistry labs have been designed for adaptability. All of the furniture is of modular design (made of standard components) and the labs can easily be converted for rack type chemistry or for bench work. Service stations on the benches provide water, power (110 V), gas, compressed air, distilled water and vacuum. All of the utilities are valved at the wall so that the benches are readily movable. In addition to the power at the benches, each lab has a 440 V three phase power distribution panel to provide service to larger pieces of electrical equipment.

All of the air which passes to the outside from air conditioned labs in the building passes through absolute filters. In addition, there is in each lab a connection to the hot waste system which runs to the hold-up tanks. Provision has been made for lockers in the hall for gas cylinder storage. The gases are then piped through the wall to the individual experiments or benches, thus eliminating the need for cylinders in the laboratories.

The counting room will be shielded to eliminate both nuclear radiation and radio frequency waves.

The new building now being constructed will meet the department's most pressing laboratory needs, but it is only Phase I of the plan to consolidate the different parts of the department into a smaller number of buildings and to provide better experimental facilities. One of the advantages of the cross-like shape of the new building is that it can very easily be expanded by adding on to each of the wings. In the future it is hoped that an additional 39,000 square feet of space can be added to the building and that the Nuclear Engineering Department's mechanical engineering, operations, design, and reactor theory personnel can be housed in the expanded new building.

## PROFESSIONAL ENGINEERS MEETING AT BNL

The Suffolk County Chapter of the New York State Society of Professional Engineers will hold a dinner meeting at 7:00 p.m. March 17 at the Brookhaven Center. Brookhaven engineers are cordially invited to attend the meeting.

If you are interested in attending the meeting, please contact Sven Wichman, Ext. 2158, so that dinner reservations may be made.

## CIRCUS DISCOUNTS

Arrangements have been made through Madison Square Garden for discounts to Laboratory employees for the Ringling Bros. Barnum and Bailey Circus. A saving of approximately 30% can be yours by exchanging the identification tickets offered to us.

Pick up your discount tickets at Personnel Services, Building 185. The supply is limited. First come, first served.

## RIFLE AND PISTOL CLUB

There will be a group leaving the Recreation Building at 6:30 p.m. Thursday, March 10, for the Pistol Match with the Mid-Island Rifle and Pistol Club. There are directions on the bulletin board in the club room for those who wish to go but can't go with the group. This match is an N.R.A. 50 ft. course and only .22 cal. pistols may be used. Let's have a good turnout!

## SET SHOTS

The Thumpers' dreams of an undefeated season came to an abrupt end last Tuesday when a poor scoring effort was finally capitalized on by Metallurgy in a 40-30 contest. It was a close defensive game until 3 minutes from the end of the game. Then Atherton stepped to the foul line for two shots with his team only 3 points down. Both shots just rolled out and the heartened Metallurgists hit 3 straight field goals to romp home by 10.

Bill Kenney really had a good night as he poured in 18 goodies while the best any Thumper could do was a 12 point effort from Jack Rush.

At 7:30 Chemistry and Biology clashed and right from the start Biology was running away to a 53-21 victory. Everyone scored well for the Bios with Marshall (18) and Sabine (17) high men. Lark was high for Chemistry with a mere 9 points.

This week it's the Thumpers vs. Chemistry at 6:15 and O.T.'s vs. Metallurgy at 7:30.

## BNL SAFETY RECORD



**62 Days Since Last Disabling Injury**  
(Jan. 5, 1960 - March 6, 1960)



## BERA BOWLING

### GREEN LEAGUE

The Fire Department beat Chemistry 4-0. Rhodes, Kinney and McFadden rolled 566, 535, and 514 series, respectively. The Reefers won over the Teasers, 3-1. The Reefers lost the last game by one pin. Kampe and Ratyca had 519 and 506 series.

The Old Timers won easily over the Electrons 3-1. Adams had 522 and Gilmartin 519 for the winners. Dvorak had 553 series for the losers. High games were: Dvorak 211, Rhodes 224, Gilmartin 197, and McFadden 191.

### PURPLE LEAGUE 2/24/60

The Phoubars, still in first place, took three points from the Bowl Aides. Dick Vogt had a 231, 577, Ole 182, 507 and T. Marrion 177. The Bowl Aids didn't give up easily as Schulz bowled his first 214, 505 series.

The Designers had little opposition as they took four points from the Toppers. Rocky had 195, 556, Scatton 204, 551, Sperry 202, 550. For the losers Reamy had 174, 510 and Nocar 170.

The Chain Gang and Fiscal split 2-2. Brems had 184, 507, Whitaker 181 and Lacey 175. The Fiscal team had Bohn with a 172 and Saletros 166.

The Ptuis had a bye.

**3/2/60** The Chain Gang with Brems' 524 series put a damper on the Designers' bid for first place by splitting 2-2. Sperry's 215 and Rocky's 204-555 helped the Designers' cause.

The Phoubars retained first place by winning three points on Ole's 219-575, Vogt's 520, Marrion's 511, and Serry's 193. Dick German's 514 and Beckwith's 194 were the losers' best efforts.

Fiscal, paced by Bohn's 495, took 3 points from the Toppers. For the losers, Nocar had 505.

### BOWLING PARTY COMMITTEE MEETING

There will be a meeting of the BERA Bowling Party Committee held at the Recreation Office, in the Gym, Thursday, March 10, 12 noon. All league representatives please attend.

### DANCE CLASS

The first meeting to organize a new Arthur Murray dance class last Thursday was postponed because of the snow. However, this Thursday, March 10 at 8:30 p.m. in the Recreation Building those interested will form a new class to last 10 weeks. The fee will be about \$1.50 per lesson. Registration will be accepted at this meeting.

## BERA EXECUTIVE BOARD ELECTION

The terms of three members of the Executive Board of BERA expired on March 1, 1960. The Nominating Committee of BERA presents the following slate of six candidates. Three are to be elected for a term of two (2) years.

Ballots with voting instructions are being distributed this week to all employees.



Left to right: Top row - RED CARSTEN (Instrumentation and Health Physics), ALF CHRISTOFFERSEN (Photography and Graphic Arts), and DON DAVID (Physics). Bottom row - BOB FUCHS (Reactor), LARRY FULLER (Nuclear Engineering), and MARY SEMERJIAN (Accelerator Development).

### CHESS

The weekly meeting of the Chess Club is to be held on Tuesday evening, March 8 at 8 p.m. in the Recreation Building. All employees and their families are cordially invited to attend. In view of the short notice any person who cannot attend and would like to join our group is asked to call Enid Degenhardt, Ext. 2110, so that they might be placed on our game schedule for future meetings.

### 1960 SLO-BALL LEAGUE

Preliminary plans are now being made for the 1960 Slo-Ball season. It is anticipated that there will again be two leagues of about six teams each, with some inter-league games played. Each team will be scheduled to play one game per week over about a fifteen week season.

Departments or groups interested in forming teams should send a representative to the next meeting - at 1200, March 16th, in the Recreation Office. Call Tom Prach - Ext. 778, or Len Baker - Ext. 591 for further information.

### BROOKHAVEN SKINDIVERS MEET MARCH 14

The next meeting of the Brookhaven Divers club will be held on Monday, March 14, at their quarters in the Recreation Building on York Lane at 8 p.m.

The order of business will include further plans for club activities this coming season. Under particular discussion are dives to Block Island and surrounding waters and a mandatory diving proficiency test for members.

Following the regular meeting, a 40 minute color film entitled "Underwater Treasure" will be shown.

**BALLET INSTRUCTION**

Perhaps you have noticed or heard about a group of young ladies going to the gymnasium on Thursday evenings, practicing ballet routines and receiving informal instruction from one of our employee's wives who has been offering her time and talents. Because of this activity, the instructor has been receiving requests to start a formal class open to employees and wives of employees.

The class will meet each Thursday at the gymnasium at 7:30 p.m. Each session will last about 1½ hours. The entire course will span an 8-week period. Participants will be expected to purchase their own shoes (arrangement will be made for a group purchase). The expenses involved will include the purchase of necessary bars and records plus the traveling expenses of the instructor.

It is planned to begin the instruction March 10th. Each lesson will cost no more than \$1.50 per person. This figure will be reduced depending on your response. The more we have in the class, the less it will cost you. Register now at the Recreation Office, Building 461, Ext. 391. Your registration MUST be accompanied by the fee for the 8-week course, \$12.00.

**FAMILY PASSES**

All employees are urged to obtain long term passes for members of their immediate families if such members will use the recreation areas without the employee being present.

Members of immediate family include husband, wife, children over 13 years of age and other relatives who reside in the employees home. A memo of request to the Security Office is sufficient.

**SEWING CIRCLE**

The Wednesday sewing-chatting circle has decided to charge 25¢ per adult, per meeting to cover the necessary expenses. Coffee and cookies will still be served. All wives of Brookhaven employees and newcomers are welcome to come between 2:30 and 4:30.

**PHYSICAL FITNESS**

Informal sessions are being held each Thursday evening at 7:30 p.m. at the Gymnasium for those employees wishing to get some regular exercise in one form or another. A BERA instructor is on hand to supervise the activity. Men and women - bring gym shoes and clothes.

**COMING**

CONCERT - Duo Di Roma. Wed., March 23.  
BERA DANCE - April Fool's Day.

**CLASSIFIED ADS****FOR SALE**

1957 BELAIRE CHEVROLET - 6 cylinder, 2 dr. sedan. R&h, electric clock, cig. lighter, automatic transmission. 30,000 miles. \$1200. Jake, Ext. 2208.

1952 CHEVROLET - 4 door sedan, automatic transmission. \$125 or best offer, owner leaving this country. Ext. 2356, Erdik.

1951 CHEVROLET - 6 cylinders, 4-door sedan, radio and heater, manual transmission. \$80. E. Hart, Ext. 793.

1956 OLDSMOBILE - 4 door, 2 tone, radio and heater. Auto. trans. J. Zahra, Ext. 2170 or POrt Jefferson 8-2075-J.

HOUSE - Center Moriches. 4 large rooms and bath. Knotty pine kitchen. One acre land. Two car garage. A-1 condition. Near new Catholic school. Phone evenings ATLantic 4-6350.

HOUSE - Lord Chesterfield Ranch, E. Brentwood. 3 bedrooms, full dining rm., living rm., vanity bath. Cabinet lined GE kitchen, wall oven, refrig. table top range. Double hung windows. Full dry basement. Attached garage. Front porch. Oil hot water heat. Extras include shades, storms and screens, washer, patio. Landscaped ½ acre. \$14,750. BRentwood 3-9422 evenings.

HOUSE - Center Moriches. 2 story, 3 rooms and kitchen ground floor; 2 large, 3 small rooms, bath second floor. 2 screened porches. ¼ cellar, hot-water heat, screens, storm sash. Large trees, many flowering shrubs. Convenient walking distance stores, schools. Sacrifice \$11,000. Ext. 689 or ATLantic 4-8316.

HOUSE - 6 yrs. old. 2 bedrooms, picture-window living room with wall-to-wall carpeting, eat-in kitchen, colored tile bath, attached garage, aluminum storms and screens, washing machine. Many shade trees on this 80 ft. x 128 ft. lot. \$55 per month pays all. Price \$8500. RONkonkoma 9-5562 after 6:00 p.m.

HOUSE - Patchogue. Nice location near Roe Blvd. section. Entrance hall, living rm., dining rm. with fireplace, kitchen, bedroom (or TV room) and full bath downstairs. 4 bedrooms and bath upstairs. Full attic and cellar. Recently installed circulating hot water heating system with all new radiation. Westinghouse electric range and laundromat included. Lot 60 x 200. 2-car garage. Ext. 2210 after 3 p.m. or ATLantic 6-8876 after 6 p.m.

HOUSE - \$7500. 3 bedrooms, stucco ranch, new hot water heat, 8 miles to Lab. BELLport 7-0611-J.

HOUSE - for sale or rent. Bellport. Near schools and village. 4 bedrooms (1 very small). Modern kitchen, garage. ATLantic 6-8850 evenings.

HOUSE - 2 bedroom Cape Cod, 6 months old, unfinished upstairs. Full basement, oil heated hot water, hot air heat. Blue Point. C. Bedell, Ext. 2191 or EMerson 3-9531 after 6:00 p.m.

BEEETLE CAT BOAT - 1 yr. old. Fully equipped. Dacron sails. \$650. Please contact Lippincott, BELLport 7-1485.

CAR-TOP BOAT LOADER - one man operation. Used only one season. Complete with front carrier, fits any standard trailer hitch. D. Cantor, Ext. 2102.

TV SET - 21 inch RCA table model. In good working condition. 3 yrs. old. Jake, Ext. 2208.

TV SET - 12 inch Zenith. Not working. Needs picture tube. \$5. R. Louttit, Ext. 738.

AMPLIFIERS - two 20 watt Heathkit amplifiers Model A9C with built-in preamps. One is 1 yr. old, the other 2½ yrs. old. G.E. stereo cartridge (Golden Classic Series). Needs new stylus. Complete price - \$45. J. Smith, Ext. 792.

TELEPHONE TABLE - maple (honey tone), bench - perfect condition - \$15. 1 pr. golf shoes, size 8½, English import, cost \$25 - price \$10. Mahogany coffee table, leather tooled top, \$15. Green, Norgahyde "relaxer" chair, \$70. E. Miller, Ext. 2172, or POrt Jefferson 8-3036.

MARKSMAN - Pellet pistol, cal. 177. With 5 packs BB-2 darts. \$4.50. ATLantic 6-8517.

SKI BOOTS - Strasser Parsenn. Ladies size 7½. Partial boot-within-a-boot. Used two days. Real bargain for spring skiing. \$20. R. Louttit, Ext. 738.

35 MM. CAMERA - German model "Edixa-1". F-2.8 lens, built in self-timer, with leather carrying case. Leather case with shade hood and 5 filters. Flash outfit. All in excellent condition. \$40. P. Buhl, Ext. 354.

**FOR RENT**

HOUSE - 8 room. 2 baths, washing machine, dishwasher, refrigerator, etc. in heart of Bellport, 2 blocks from Bay, available from May 24, 1960 to end of August 1961. D.C. Rahm, Ext. 544 or BELLport 7-0054-W.

HOUSE - 3 bedrooms. In village of Patchogue, near schools, railroad and village. \$90 month. GROver 5-8339.

HOUSE - East Setauket, unfurnished 1½ year old house: 2 large bedrooms, living-dining room, large kitchen, good closet space, stove and refrigerator. Available June. Call Paul Michael, Ext. 550 or Setauket 6-1955.

**WANTED**

LIONEL O-27 ENGINE - Diesel preferred. Also 2 or 3 passenger cars. Ext. 590.

PING-PONG TABLE - used, reasonably priced. Call Torre, Ext. 423.

DC ELECTROMAGNET - 0 to 10,000 gauss. For short term experiment on site. Ext. 354, J. Kelsch.

**CAR POOLS**

Three man car pool leaving Bay Shore desires other members. Jake, Ext. 2208.

Want to join or form car pool from Riverhead. A.C. Nerenberg, Ext. 744.

Ride wanted from 4 corners in Patchogue or S. Ocean and Carman St. Ext. 460.

**LOST AND FOUND**

FOUND - gold pin found in parking field across from Cafeteria. Call Personnel Services, Ext. 2107.