

the Bulletin Board

VOLUME 13 - NUMBER 39

Published by BNL Personnel Office

MAY 31, 1960

EMERGENCY MEDICAL CARE AFTER HOURS

If you have an accident or urgently need medical care while on site during non-regular hours (from 5:00 p.m. to 8:30 a.m. on weekdays and twenty four hours on Saturdays, Sundays and holidays), your most important consideration is to obtain medical help as soon as possible. Before such an emergency arises, every employee should be sure he knows where to get this help.

There are several important things to remember. **For radiation accidents, go to the Radiation Accident Treatment Entrance of the Industrial Medicine Clinic. For all other emergencies, go to the Regular Entrance of the Industrial Medicine Clinic.** Do not use other entrances to the Medical Research Center as you will encounter unnecessary delay in obtaining immediate care. The Radiation Accident Treatment Rooms and the Industrial Medicine Clinic are designed to give you the immediate help you need in case of emergency.

When necessary to telephone the Medical Research Center, the Extension to dial is 301.

RADIATION ACCIDENTS

The Radiation Accident Treatment Rooms are located to the right of the ambulance entrance (see photographs). If you have an accident in which there is a question of contamination, go to this entrance. Open either of the two entrance doors. This will **automatically** signal medical personnel on duty. Go inside the room and immediately and thoroughly wash the body areas affected. There are showers and a sink directly inside each door for this purpose. When your signal is received, you will be given instructions over a loud-speaker, telling you what to do while help is on the way.

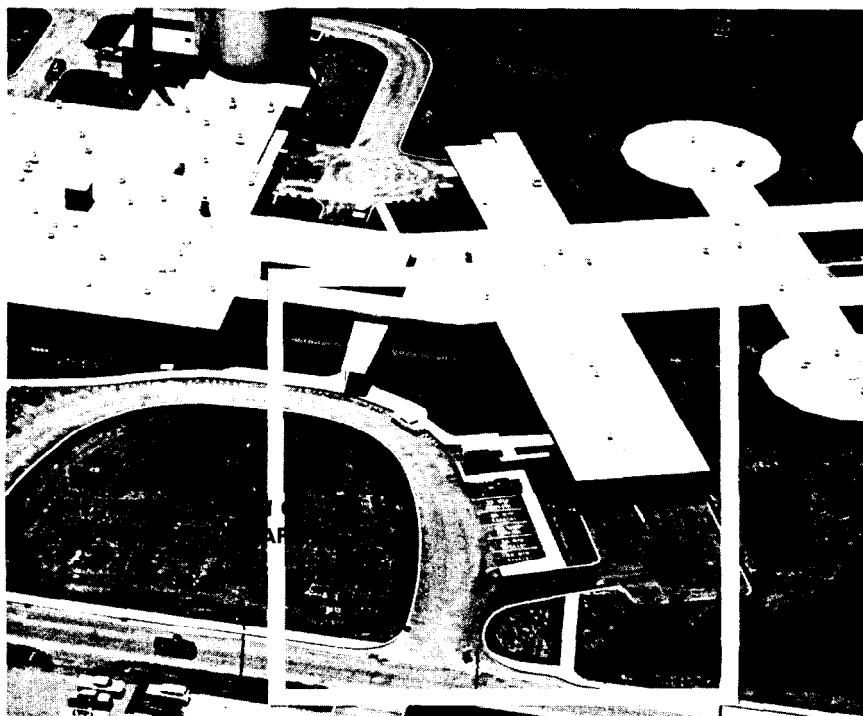
The room has two suites designed specifically to deal with radiation accidents. To go elsewhere would mean a delay in treatment and the possibility of contaminating other areas of the Medical Research Center.

People who work in areas where the possibility of radiation accident exists

**HOSPITAL VISITORS'
ENTRANCE ONLY**

**ENTRANCE FOR ALL
TREATMENTS EXCEPT
RADIATION ACCIDENTS**

**ENTRANCES FOR ALL
RADIATION ACCIDENTS**



should be familiar, of course, with the Health Physics procedures which have been set up in their areas.

OTHER EMERGENCY MEDICAL CARE

For any other type of medical emergency after hours, go to the main Industrial Medicine Clinic entrance (see photographs). The outer door at the entrance is always open. A telephone

intercom for emergency use is in the vestibule. A sign gives instructions for its use. Lift the phone off the hook. This will **automatically** signal a nurse. Wait for her to answer the signal. She will give you further instructions over the telephone intercom.

Study the photographs. Be sure you know where to report in case of medical emergency after hours.

NAVAL RESERVE RESEARCH COMPANY 3-9 TEN YEARS OLD



"Captain R.A. Conard, MC, USNR, inspects control console of Medical Department Research Reactor during tour of Facility by NRRC 3-9."

Naval Reserve Research Company 3-9, which has its home base on site, recently observed its 10th birthday. From the original nucleus of Naval Reserve officers who organized the group, motivated by a mutual interest in scientific research and the desire to keep informed of research and development activities in the Navy, "Three Dash Nine" has expanded into one of the largest of 110 Research Reserve Companies in the country. The current roster of over thirty members includes five Army Reserve officers and one Air Force Reserve officer.

Most BNL employees are vaguely aware that the Naval Reserve Company exists. Perhaps you have wondered what they do.

If you dropped in at one of their meetings in the Research Staff Lounge, you might not be aware that it is a military organization, since there would be no uniforms in sight. You might catch part of a discussion of military matters or of a research project with salty overtones. In past sessions, you might have heard a lecture by a scientist actively engaged in the problem of training a man to fly the first Moon-Ship (this was discussed four years before Sputnik) or a description of Project Mouse (Minimum Orbital Unmanned Satellite of the Earth), which two years later was to become the basis of the U.S. satellite program. You might have listened in, via tape recordings, on a gam of whales in their natural habitat or a porpoise calling its mate. You might have had a chance to fly a patrol bomber by means of a synthetic trainer with all of the realism of actual flight.

The object of all this is to keep the group informed of latest developments in Naval Research and to keep them abreast of current military matters. Thus each reservist is provided with opportunities for peacetime participation in the research and development program of the Office of Naval Research and his value to our country in case of mobilization is enhanced.

For most BNL employees, the most obvious sign of activity on the part of the local company appears on the Monday after Labor Day when the annual Nuclear Sciences Seminar convenes in the Lecture Hall. During this period, thirty to fifty reserve officers from all services come to BNL under orders from their home commands and spend two weeks participating in a seminar program. Last year the program provided comprehensive coverage of all types of radiation accidents. This year's seminar, currently being prepared by 3-9 and the Health Physics Division, will provide a two-week course in Health Physics. Military administration, conduct of the programs and liaison with BNL is arranged by members of 3-9, some of whom will be on two weeks active duty for this purpose.

During the rest of the year, the company holds regular meetings which are used for planning seminars, listening to lectures on naval or scientific subjects, making tours of military or scientific facilities in the area, or working on a scientific or technical study pertinent to the Office of Naval Research program. Research Reserve Companies enjoy local autonomy in setting up their training programs. The Staff of 3-9 tries to develop training programs consistent with qualifications of individual members.

Many of the members take active duty for training at other locations around the country where specialized seminars on scientific subjects are conducted. Two weeks active duty per year is available to research reservists, but is not required for membership. Membership in the company is always open to eligible reservists. Information can be obtained from the Commanding Officer, CDR J.C. Austin or the Executive Officer, LCDR S.J. Tassinari.

Membership in the Research Reserve benefits the reservist by keeping his commission current, providing half the annual requirements for promotion, providing the necessary qualifications for "Satisfactory Federal Service" and eventual retirement with pay, and giving him first priority for attending Research Reserve Seminars.

In case of mobilization, Research Reserve Officers can expect to be assigned to duties in connection with

conducting or administering research projects, administering research contracts or serving as staff advisors or liaison officers for research and development activities.

A lesser known aspect of the Naval Reserve is the Navy's Direct Appointment Program. Under this program, certain individuals who have had military service in any rank or rating, and who have since obtained a degree from an accredited university, can apply for a commission in the Naval Reserve. Information on this program can also be obtained from the Commanding Officer.

OPERATION GET TOGETHER NUMBER 3

Now that warm weather is upon us, thoughts turn to boating, swimming and picnics. Around the Laboratory "picnic" means OPERATION GET-TOGETHER, an annual fun-day sponsored by your Recreation Association for the enjoyment of all employees and their families. The 3000 attending each of the past two picnics have clearly indicated this as BERA's number one participation event.

Even the smallest event - such as your family going to the beach - requires planning. The salad and sandwiches you unpack did not just happen. The napkins, plates and cold drinks did not come uninvited. Somebody had to remember the portable radio, the blanket, the swim suits and the softball bat. Your car did not decide to head to the beach on that particular day.

Somebody planned it all that way. The result; a happy family outing.

Obviously, our picnic requires the cooperation and assistance of a great number of people in order to be successful. The first steps are now being taken. Don't hesitate when you or your department is asked for help. Committees will be organized early in June. Start thinking about which one you would like to serve on.

UPTON RIFLE - PISTOL CLUB

The U.R.P. Pistol Shooters were defeated by the Mid-Island Rifle and Pistol Club in a match on May 22, by a score of 1045 to 996. The four top contenders in this match were P. Colsmann 267, P. Hichborn 253, M. Johnson 246, and R. Smith 230. There was a good turnout for the match by both teams and the enthusiasm warrants a return match in the near future.

The next official match will be with the Southampton Rifle and Pistol Club on Sunday, June 19.

MOTOR BOAT REGISTRATION RULES

From a pamphlet prepared by the State of New York Conservation Department, Division of Motor Boats:

Beginning January 1, 1960, a new State Conservation Department, the Division of Motor Boats, administers a new Federally approved boat registration and safety program.

Here's how it affects you as a boat owner:

WHO MUST REGISTER - Under new Federal and State laws which first became effective January 1, 1960, existing Coast Guard and State boat numbering systems were discarded and a new uniform and nation-wide system was adopted. In New York State, **all owners of mechanically propelled boats** (except U.S. Customs documented vessels) **will be required to register** their boats under the new system and to obtain new identification numbers.

WHAT IS INVOLVED - The new Federal - State plan requires boat owners to display their new numbers in contrasting letters at least three inches high on both sides of the bow of their boats. In addition, the new laws require that a pocket size certificate of registration, to be issued with each number, be available at all times for inspection on the boat for which it is issued, whenever the boat is in operation.

WHERE DO I GET APPLICATION BLANKS TO REGISTER MY BOAT? - Applications for your new boat number may be obtained at marine dealers, yacht clubs, boat shows, through your boating organization, or by writing the Division of Motor Boats, Conservation Department, Albany 1, N.Y.

WHAT WILL IT COST? - The cost of your new boat registration will depend on the size of your boat. Each registration will be for a **three-year** period according to the following schedule:

3 yrs {	Under 16 ft in length	\$ 3
	16 to under 26 ft in length	\$ 6
	26 ft or over in length	\$10

WHEN MUST I REGISTER? - It is estimated that there are over 600,000 motor boats in New York State that must be registered under the new plan. To avoid a registration log-jam before the start of this boating season, a three-year staggered registration system was worked out.

By 1960 - If your boat is not presently registered with either the Coast Guard or the State Department of Public Works, you must register under the new system before you can operate it in 1960. If your boat bears a New York registration number from NY 1 to NY

88,000, it also must be registered under the new system before it can be operated in 1960.

By 1961 - Coast Guard registered boats and all New York State registered boats which bear numbers from NY 88,000 to NY 150,000 must be registered under the new system before the beginning of the 1961 boating season.

1962 for numbers over 150,000 - Boats bearing New York State registration numbers above NY 150,000 need not be registered until 1962.

FOREIGN UNIVERSITY STUDENTS TO VISIT BNL

A group of foreign students now attending American universities will visit the Laboratory on Saturday, June 4. The visit was arranged by the Department of Christian Friendliness of the Baptist Society of the New York City Metropolitan Area as part of its Hospitality Program to International Students. Approximately 40 students will be in the group.

LAST CHANCE TO ORDER FIRE EXTINGUISHERS

The deadline for orders for Kidde 2½ pound Dry Chemical Fire Extinguishers is this Friday, June 3. Don't forget to place your order at Personnel Services, 58 Brookhaven. List price \$19.75, group purchase price \$12.50. Your order must be accompanied by payment. These extinguishers are United States Coast Guard approved for use on boats.

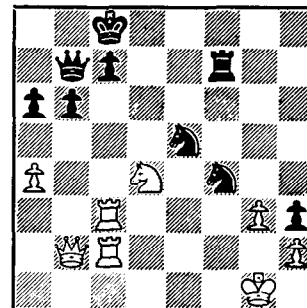
BNL SAFETY RECORD



8 Disabling Injuries at BNL thus far in 1960 (for a rate of 4.32 injuries per 1,000,000 manhours - compared to all AEC Research Contractor rate of 1.77).

CHESS PROBLEM

This is the first of a series of chess problems to be presented in THE BULLETIN BOARD by the BNL Chess Club. It is black's move. White has a solid position, but black wins by mate nonetheless. Answer to the problem in next week's BULLETIN BOARD.



ADVICE TO THE LOVE-LAWN WATERING

It is usually not necessary for a lawn's survival to water it except during periods of prolonged drought. Overwatering usually has unsatisfactory results. It causes an abundance of some weeds and a soft lush growth that is subject to fungus disease.

If you want to maintain a green lawn in hot, dry weather, watering should be started before the grass begins to turn brown. Experts agree that light waterings are harmful. On the other hand, it is not practical to put the equivalent of an inch of rainfall on a large area - this would amount to 27,000 gallons of water for one acre. Just do the best you can and don't worry about it.

ROSES

To control Black (leaf) Spot on roses, use a fungicide such as Bordeaux Mixture, Dusting Sulphur, etc. Reapply after each rain.

Aphids can be controlled with Black Leaf 40 (nicotine sulphate) or the Pyrethrum sprays. Chewing insects (Japanese beetles etc.) can be controlled by chlordane or D.D.T. sprays.

Some plants will show leaf injury (leaves partly eaten) with no insect in evidence. This is usually the result of the Asiatic Garden Beetle. This insect feeds at night. This beetle looks like a coffee bean. (We don't know what 42 beans to the cup will produce.)

POOL

The swimming pool will remain on its present schedule until mid-June. Summer rates and times will be announced shortly.

FRINGE PATTERN

One of the outstanding features of the A.U.I. retirement plan is the fact that both TIAA and CREF are "fully vested" annuities. This means that you own your annuities completely. From the day your first annuity premium is paid, you assume full control of all retirement and survivor benefits purchased by your own and A.U.I.'s contributions.

If you leave A.U.I., you may leave your retirement contracts in force and continue payments on your own or leave the contracts in effect and make no further payments. If you continue payments on your own, you may adjust the amount of your monthly payment as is most convenient for you. Whether you continue to make payments or not, when you retire (at whatever age you choose) you will receive retirement income based on both your contributions and those of A.U.I.

If you leave A.U.I. before you have been a member of TIAA-CREF for five years, you may elect to cancel your retirement contracts, in which case you receive a cash return of your contributions, including all interest and dividends. TIAA-CREF repurchases your contracts, returning to you your portion of the total accumulated funds, and returning to A.U.I. its portion of the funds.

FREE AUTHENTIC HAWAIIAN HULA SHOW

The L.I. Industrial Recreation Association has planned an authentic Hawaiian Hula Show for you on Monday night, June 6, at 8 p.m. The show will take place at the Republic Recreation Building, just 500 feet north of Republic Aviation's main gate (Farmingdale) on Route 110 (Amity-Huntington Road).

The performers, hula girls and guitar players, will come directly from Hawaii to entertain you and to tell you about the romance of spending your vacation in their lovely islands. A color and sound movie will also be shown, to acquaint you with places of interest in the Islands. This meeting will be of special interest to those planning to make the HAWAII AND THE GOLDEN WEST tour this summer.

This trip (fare only \$569) is open to all employees, their families AND THEIR

FRIENDS. Those having questions about this trip will have the opportunity to ask them at the June 6 get-together. However, this show is open to all, and it is not necessary that you be registered for the trip to attend.

Folders are available at the Recreation Office in the Gymnasium and at Personnel Services, 58 Brookhaven Ave.

BROOKHAVEN CENTER

The Brookhaven Center will be closed on Monday, June 6th, as it has been reserved for a conference which will require all its facilities.

DON'T SEND FILM THROUGH LAB MAIL

The film service at Personnel Services is on a self-service basis. Please do not send film for processing through the inter office mail.

DU BRIDGE BOOKS HAVE ARRIVED

The group order of "Introduction to Space", by Dr. Lee A. DuBridge, has arrived at Personnel Services. Please bring payment when you pick up your copy.

CLASSIFIED ADS**FOR SALE**

1946 DE SOTO - good running condition. 4 new tires and spare. \$50. Ext. 2342. Mrs. H. Weyrauch.

1953 CHEVROLET - 4 door sedan, standard shift. Heater, good tires, two new. Very good condition. \$300. M. Collins, Ext. 2265 or Atlantic 1-9455.

1954 HUDSON - Hornet. 2 door hard top. automatic transmission, power brakes, r&h. Best offer over \$200. E.E. Shelton, Ext. 543.

1949 PACKARD - reliable and runs well. Owner leaving Lab. Contact today. Ext. 733.

1953 FORD - 6 cyl. Asking \$200. Will bargain. Degenhardt, BRentwood 3-2250, or Ext. 2110.

1957 ½ TON PICKUP - very good condition. Two extra wheels and snow tires. \$850. H. Vanderloef, WAding River 9-4151.

TRACTOR - 4 wheel riding tractor. 8½ h.p. Briggs, chain drive through slip-band clutch with forward and reverse. Has dual 6 by 12 tractor driving wheels, 10 in. plow and coulter, 10 in. discs, cultivator and 36 in. front blade. Price is \$400 fixed. Ext. 353 or BELLport 7-0436.

BOAT - open 17 ft. with 25 h.p. 1955 Evinrude outboard. Price \$150. Phone F. Griswold, Ext. 693.

24 FT. CABIN CRUISER - with 100 h.p. Flagship engine. Rebuilt 1959, full galley, head, very sound boat. \$1200. GRover 5-3632.

HOUSE - N. Bellport, 3 bedroom ranch. Complete basement, fully landscaped, storms and screens. Walking distance to elementary school, bus to junior and senior high school, bus to new parochial school now under con-

struction. ATLantic 6-9246 after 5:30 weekday, all day Saturday and Sunday.

LAWN MOWER - hand, 17 in. cut, Pennsylvania. Used one season, excellent condition. \$12. C. Porter, Ext. 2373.

4 CHILDREN'S CHAIRS - captain's style, pine finish. \$10. J. Handloser. BELLport 7-1694.

MOSSBERG .22 CAL. - with scope, new case, strap, cleaning kit. \$40. Call Ext. 354 or STony Brook 7-0835. J. Kelsch.

ELECTRIC RANGE - 1958 model 40 in. G.E. with double oven. M. Hillman, Ext. 779 or EMerson 3-6787.

GIRL'S BICYCLES - Sterling 24 in., good running condition, \$16. Columbia 26 in., needs paint and a new tire, \$12. Call BELLport 7-1232-M.

GIRL'S 26 IN. BICYCLE - good condition. \$10. Call Yaphank 4-3824 after 5:30 p.m.

FREE - If anyone wants PROC. IRE, Vol 42 thru Vol. 47, come and get them. J. Handloser, Ext. 645, T-144.

FOR RENT

APARTMENT - Patchogue. 2 rm. studio apt. Furnished or unfurnished. Centrally located. All utilities. GRover 5-1880.

CAR POOLS

DESPERATE - Size 12 willing to reduce to size 10 to fit into crowded car pool as rider only. Vicinity of South Ocean Avenue, Patchogue. Call Ext. 462.

FOUND

CIGARETTE LIGHTER - Augusta "Star".