

the Bulletin Board

VOLUME 13 – NUMBER 51

Published by the BNL Personnel Office

AUGUST 30, 1960

PROCESSED ISOTOPES CATALOG

The Hot Laboratory has issued a catalog of the processed isotopes available from BNL. At present Brookhaven is the only source of supply in the United States for the isotopes listed, in the form shown.

A major source of other isotopes is Oak Ridge National Laboratory. At the present time medical researchers are the biggest users of BNL's isotopes; some are sold for industrial tracing experiments and geochemical studies (such as the dating of rocks). All customers must be licensed by the USAEC.

LABOR DAY HOLIDAY

Labor Day, Monday, September 5, will be observed as a regular Laboratory holiday.

LET'S HAVE A SAFE HOLIDAY

Since 1894 a legal holiday celebrated on the first Monday in September has been a source of enjoyment for the majority of Americans. However, for a significant number it has been a source of pain and suffering.

In order that all BNL employees may return from the Labor Day Weekend with happy memories, let's take "Safety" home Friday – and, for that matter, every day.

Labor Day ranks second of all holidays during the year in the number of people killed or injured – only Christmas figures are higher.

Take care of yourself and your family whether at the beach, in your car, mowing the lawn, painting the house . . . by constant safety awareness. Do it as though your lives depended upon it – they do!

ICE CAPADE DISCOUNT TICKETS

Exchange discount tickets to the Ice CAPADES OF 1961 are available at Personnel Services, 58 Brookhaven Avenue. The discount tickets may be purchased for all evening performances between August 31 and September 14, excluding Saturdays and Labor Day. Exchange tickets are available for matinees on September 3 and 4.

BNL'S TELEPHONE BELLES



Our staff of telephone operators is a service group with which everyone at BNL comes into contact. These Brookhaven employees perform a difficult, and sometimes hectic, job cheerfully and efficiently. The BNL switchboard handles a total of approximately 3000 to 3500 calls each day. The hours of 10 a.m. to 12 noon and 2 to 4 p.m. are the busiest of the day for the switchboard and the operators. Since employees can dial from one extension to another within the Laboratory, the bulk of calls handled by the operators are incoming and outgoing off-site calls.

The BNL switchboard is a 4-position multiple dial system. This means that four operators can be on duty at the same time. The word "multiple" refers to the fact that each operator can answer calls from any of the extensions in the Laboratory and receive calls from any of the incoming trunk lines.

A BNL operator is stationed at the sub-switchboard in the Medical Department during regular working hours. At night and on weekends the extensions in the Medical Department are handled through the main switchboard, and callers in this department dial extensions all over the Laboratory.

The BNL switchboard is at our service 24 hours a day, 7 days a week. There are regularly 4 operators on duty during the busy weekday regular work hours. During the early morning hours and on weekends, when there are far fewer calls, usually only one operator is on duty. Telephone information requests are referred to extension 400 in the Mail Room. In the evenings and on weekends, however, the operators perform information duties. They also receive and send out telegrams during these hours. (Continued on Page 2)

PHONE BELLES — Cont'd

Although many of the calls which the operator handles each day are routine, some of them are quite challenging. Approximately one overseas call is placed each month. From time to time conference calls are set up whereby people on up to four Laboratory extensions may talk to an off-site party.

Many of the operators' duties require their full attention for several minutes. For example, it is sometimes difficult to locate people for whom there is an incoming call. This is especially true in the case of guests and visitors at BNL. Each outgoing long distance call requires that the operator record detailed information on a "toll ticket".

When the operator is on duty alone, or when many calls come in at the same time, as frequently happens during the busy work hours, hectic situations may develop. This is particularly true when emergencies, such as snowstorms, arise and the switchboard is deluged with calls. Patience and courtesy, as well as fast thinking, are important parts of the operator's job.

WHO'S ON FIRST?

Umpire, batting in clean-up spot,
hits double.

Catcher Cooper does juggling act.

Base ump tags man out at second in
triple play.

Higinbotham scores as pitcher; hits
bat every time.

These were some of the high points of the contest between the Technicians and Engineers of the Instrumentation Department on Monday evening, August 22. Captains Joe Mead (Technicians) and Sy Rankowitz (Engineers) followed the regular procedure of flipping a coin to determine which team would bat first. From this point on, the rules of the game were modified as conditions demanded.

In order to keep things even, the Engineers were permitted six outs in the third, fourth and fifth innings. Umpire Budd Pollock called balls and strikes with a fine disregard for actualities. He was put on ice (literally) during the third inning, but returned in the next inning to take a turn at bat. Frank Rizzo, Jack Tillinger, and Dick German also umpired. Dick wore a glove in order to assist the team in the field, and participated in a number of unusual plays.

In a desperation move, the Engineers declared second base a "clean" area, and roped it off, insisting that all Technician runners be surveyed for contamination before tagging the base. The game was called after five innings because of fog, darkness and lethargy. Due to circumstances beyond his control, scorekeeper Dick Richardson has not been able to find out who won, so the official trophy has not yet been awarded.

During the height of the confusion, the umpire helped the catcher block the plate, and the runner yelled "That's not cricket!" the spirit of Abner Doubleday moaned "It's not baseball, either!" Fortunately, no pictures are available.

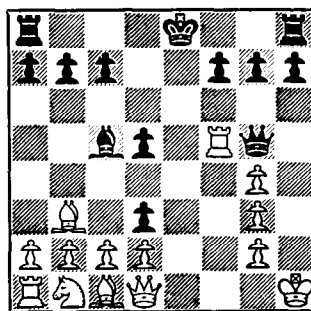
WEEKLY SAFETY HINT



"Chuck" Foelix - new Safety Representative at the Hot Lab - warns, "If you're using carbon tetrachloride, acetone, benzene, etc., - - DON'T! Try one of the safer solvents carried in stock at T-100 and listed in GS-6 of the BNL Safety Manual."

CHESS PROBLEM

In this week's problem white is pieces ahead, but most of his pieces are tied up. Black only has two pieces in action and one of them is under fire. It is black's move. Who is going to win this one? Answer on page 4.



PROPERTY MANAGEMENT

Property Management has located some heavy steel cylinders. These are liners for Navy gun barrels and can be obtained for the cutting and shipping charges. The dimensions of these liners cover a wide range of diameters and wall thicknesses; some of which are shown below:

38" I.D., 49" O.D., 20' long

36" I.D., 49" O.D., 10' long

28" I.D., 39" O.D., 20' long

6.5" I.D., 18" O.D., 40' long

7.5" I.D., 18" O.D., 40' long

If interested, call Property Management on Extension 347.

TENNIS FINALS WEDNESDAY

Last year's finalist, J. Brandon, advanced to the finals by defeating A. Nerenberg 6-2, 6-0, and R. Stearns 6-3, 6-3. R. Ekholm and A. Auskern moved to the semi-finals by virtue of their victories over T. Ishida and Dombey. R. Stearns had advanced to the semi-finals by trouncing D. Thomas 6-0, 2-6, 6-0.

On Wednesday, August 31, at 5 p.m., J. Brandon will play the winner of the Ekholm-Auskern match to determine the tournament championship.

The same evening will see the climax of the Doubles finals between Merkle-Kevey and the winners of the Auskern-Fleitman, Giallorenzo-Thomas match.

THEATRE GROUP NOTES

At a meeting of the Theatre Group, held on August 24th, the following officers were elected for the coming year.

President, John Gibson; Vice-president, Lou Slater; Secretary, Mary Kinsley; Program Chairman, Jerry Lellouche; Advisory Chairman, Harold Schwarz; House Committee, Ed Loeser and Ed Nielsen, joint chairmen.

The fall production will be THE DETECTIVE STORY with direction by Joe Jach. A group reading will be held in the Theatre Building on September 7, 1960 and all interested parties are cordially invited to take part. Meeting will begin at 8:00 p.m. when copies of THE DETECTIVE STORY will be made available.

PICNIC PICTURES

The pictures taken on the day of OPERATION GET-TOGETHER No. 3 have been printed and are now on display at the Cafeteria. Copies can be obtained by placing your order at Personnel Services, 58 Brookhaven Avenue. Orders accompanied by payment (10¢ each) will be taken until Friday, September 2.

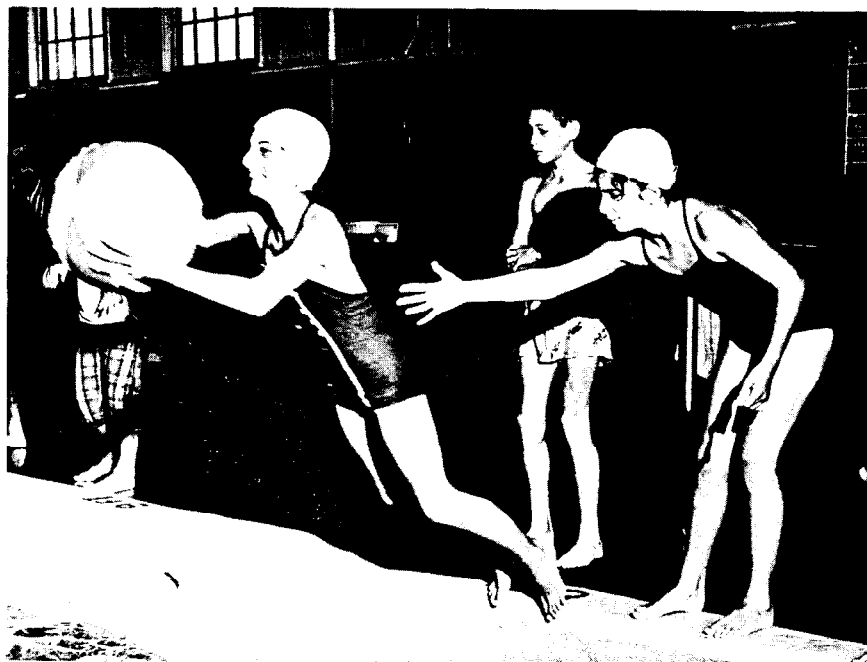
BERA FISHING CONTEST

This week there were many bluefish entries, but F. Griswold holds first place with his 3 lb., 5 oz. entry, caught trolling out of Port Jefferson.

Les Lawrence got the ball rolling in the striped bass family, with a 3 lb., 8 oz. entry. This starter was taken off the beach on the west side of Moriches Inlet.

W. Hansen now holds top honors in the fluke class with a 4 lb., 10 oz. entry. This one was taken on the surf in Quogue. The top entries to date are:

Striped Bass.....3 lb., 8 oz. - L. Lawrence
 Sea Bass.....No entries
 Blackfish.....5 lb., 2 oz. - F. Cermak
 Bluefish.....3 lb., 5 oz. - F. Griswold
 Cod.....24 lb., 7 oz. - N. Sowiak
 Flounder.....1 lb., 13 oz. - A. Kokinelis
 Fluke.....4 lb., 10 oz. - W. Hansen
 Kingfish.....12.5 oz. - W. Castleman
 Mackerel.....1 lb., 9 oz. - A. Beckwith
 Porgy.....3 lb., 0 oz. - A. Schroeder
 Tuna.....No entries
 Weakfish.....2 lb., 14 oz. - J. Klein
 Brook Trout.....No entries
 Brown Trout.....12 oz. - K. Jellet
 Large Mouth Bass.....2 lb., 2 oz. - J. Klein

SPLASH PARTY TREMENDOUS SUCCESS

Last Friday 110 of the Laboratory's most active young mermaids and mermen frolicked at a splash party in the pool. The afternoon of fun featured games and contests, which were witnessed by many parents of the participants. Prizes were awarded to the winners of the contests and all the participants received gifts from a grab bag. Certificates were also awarded to the members of the swim classes. Those who qualified received Red Cross cards.

Prize winners were: Eric Von Berg, Gretchen Von Berg, Vera De Benedetti, Paul Schwartz, Betty Bates, Kathy Swartz, Maro DerMateosian, Kathy Walsh, David Alburger, Maureen Rudden, Larry Milian, Ted Strong, Paul Courant, Joe Lapienski, Gladys Rich, Gilbert De Benedetti, Eileen Kelly, Edward Rosavitch, and Patty Taylor.

BOWLER?

Fellow talking politics to his friend: "Well, we've had a piano player and a golfer in the White House. You know who I'd like to see get in next? A bowler!"

You don't have to have aspirations to be President to join our Laboratory Bowling Leagues which are now being formed. All you need to start is some enthusiasm. Entry blanks are on hand at both the Recreation Office in the Gymnasium and the Personnel Services Office, 58 Brookhaven Avenue. Sign up now. Leagues will be formed in both the Men's and Ladies' Divisions. An early start is expected in late September. Round up five for a team or sign up as an individual.

North Shore

In addition to our South Shore Patchogue leagues, entries are being accepted for the formation of a Port Jefferson league. A few have already been received. Where's yours?

FLASH!!!

Last week, Janet Collins, a member of our beginning swim class in 1959, came through with flying colors to capture 4 medals in the Brookhaven Town swim meet held at the North Shore Swim and Tennis Club.

SOFTBALL STANDINGS

NATIONAL LEAGUE	W	L	%
1. Metallurgy	11	3	.786
2. Thumpers	11	3	.786
3. Plant Maintenance	10	5	.667
4. Old Timers	10	6	.625
5. Phoubars	8	6	.571
6. Dirty Sox	7	9	.438

BROOKHAVEN LEAGUE

1. Cosmotron	10	6	.625
2. Potsareebies	8	8	.500
3. Health Physics	7	9	.437
4. Gnats	4	11	.267
5. Medical	3	13	.187
6. Derelicts	3	13	.187

The National League Race has narrowed down to two teams, the Thumpers and Metallurgy, and these teams clash head on on Thursday, September 1, in what very well may be the game of the year.

The Thumpers, by virtue of their twin victories over another erstwhile contender, the Phoubars, have moved into a tie for first place with Metallurgy who dropped a game to the Dirty Sox.

Playoffs

The playoffs will take place Tuesday and Thursday, September 6 and 8, in a best out of three series. If a third game is necessary, it will be played on Tuesday, September 13.

UPTON RIFLE AND PISTOL CLUB

The URPC will resume its monthly meetings, Thursday, September 8, at 8 p.m. in the Recreation Building.

All members interested in large bore shooting please contact A. Lukas, Ext. 769. The program is being scheduled and is expected to start September 18.

NEXT WEEK AT THE BROOKHAVEN CENTER

8 P.M. THURS., SEPT. 1 - BULL RING

All members and wives, and visitors to Laboratory and their wives invited.

GUYS AND DOLLS AT WESTBURY

GUYS AND DOLLS, billed as the funniest, wackiest musical of all time, will be at the Westbury Music Fair from August 30 to September 4. Leonard Bernstein's WEST SIDE STORY will be the last attraction of the 1960 summer season, from September 6 through 18.

20% discount tickets are available to BNL employees and their families. Seat reservations and payment are made directly through Personnel Services, 58 Brookhaven Avenue. PAYMENT MUST BE BY CHECK MADE PAYABLE TO WESTBURY MUSIC FAIR.

POOL, GYM CLOSED

The swimming pool and the gymnasium will have completed their summer schedules this Wednesday, August 31. Both facilities will be closed during the month of September. Announcements of future schedules will be made in THE BULLETIN BOARD for the fall season.

RECREATION OFFICE CLOSED

The Recreation Office will be closed beginning Tuesday, September 6, through Friday, September 23. For recreation information, contact R. Vogt at the Personnel Office, 58 Brookhaven Avenue, Ext. 2107.

ANSWER TO CHESS PROBLEM

WHITE	BLACK
1.	P - K R 4 (Threat P x P mate)
2. P x P	Q x R
3. P - N 4	R x P check
4. P x R	Q - K 5 (Threat ... Q - R 5 mate)
5. Q - B 3	Q - R 5 check
6. Q - R 3	Q - R 5 check
7. K - R 2	B - N 8 check
8. K - R 1	B - B 7 double check, and mate next.

CLASSIFIED ADS**FOR SALE**

1955 FORD - 8 cyl. Tudor in excellent cond. New tires, new seat covers. Best offer over \$550. Owner leaving Lab. Ext. 2148.

1960 VOLKSWAGEN MICROBUS - coral and cream station wagon, heater, 5000 mi., excellent cond. ATLantic 9-0919.

1959 RENAULT DAUPHINE - heater, windshield washers, 11,000 mi., excellent cond. Blue. \$1,100. J. Backes, Ext. 2341 or ATLantic 6-8224.

1950 CHEVROLET - 2 dr. sedan, r&h, good running condition. \$125. Ext. 2119. BELLport 7-0866 after 5 p.m.

1949 WILLYS - station wagon. Also 10 cu. ft. King freezer. Girl's 24 in. bicycle, like new. SElden 2-3285.

1956 FORD STATION WAGON - country sedan. Auto. trans., r&h, 41,000 mi. Excellent cond. Owner leaving country. R. Von Berg, Ext. 377 or 535.

1951 CADILLAC SEDAN - engine in excellent shape. Ext. 2109 (V. Hughes).

1951 CHEVROLET - power glide. Good cond. Good tires. L. Green, Ext. 789.

HOUSE - 6 yr. old Cape Cod. \$10,000. 3 master bedrooms, large Hollywood tile bathroom, living rm., and kitchen. Hot water heat (oil) full cellar. 9x12 patio. 100x100 landscaped. Stove. Ref., washing mach. all electric. G.Rover 5-2715.

1958 12 H.P. SEA KING - very good cond., manual start, remote tank, used 2 summers. \$160. Also 1959 18 h.p. Johnson, all white and gleamy. Used this summer only, perfect condition, push button stop, will give new motor guarantee, std. shaft. Book value \$290. Will sell for \$260. Ext. 482 or BELLport 7-1092 evenings or weekends.

1954 CHRIS CRAFT - 22 ft. Express Cruiser. Galley, 2 bunks, navy top and side curtains, rear canvas. Elec. bilge pump, s/s radio. 95 h.p. engine. Extras. \$2,000. Ext. 600, Bob Streeter. Evenings SHoreham 4-9382.

1958 FIBREGLASS RUNABOUT - 15 ft. with elec. starting, forward-steering, Johnson 35 h.p. outboard motor. Also includes 6 gal. fuel tank, full canvas cover, water-proof upholstered seats, lines, ladder, front and rear lights. Our total cost was over \$2300. Will sell complete for \$1050. ATLantic 6-8744 evenings.

21 FT. SLOOP - Shore Bird No. 27. New Dacrons, centerboard, caulking. Good racing record. Don Gardner, Ext. 2376 or G.Rover 5-8054.

GRAND PIANO - Kranich and Bach. Ext. 2373 or 618.

GREAT DANE PUPS - AKC reg. Champion sired. Show prospects. Handsome, excellent with children. MOhawk 9-8027, Ext. 620.

TRANSCIEVER - LaFayette HE-15 Citizens Band. Complete with crystals, new mike, latest circuits. Like new, less than 20 hrs. use. R. Young, Ext. 590.

RADIO - AM-FM RCA. Twin speakers, \$35. N. Pattenden, Ext. 541.

WILL SWAP - an Ultra Blitz strobe and Kalart extension for an 1895 Dutch botter and \$10. Positively no dickering. J. Walsh. Must be seen to be appreciated. Ext. 612.

17 IN. RCA TV - console. Mahogany finish, top working order, has pilot light in front, phono and tuner input plug with video shut off switch and tone control. \$50. W. Kalinowski, call noontime, Ext. 2129 or BELLport 7-1474-J evenings or weekends.

WESTINGHOUSE LAUNDROMAT - 2 yr. old, excell. cond. J. Thoma, Ext. 373 or WA 9-4867.

MARTIN CLASSIC GUITAR - Call Pixley, Ext. 2218.

UPRIGHT PIANO - for person who inserted want ad in August 16 BULLETIN BOARD. Reasonably good condition, needs tuning. AT-6-8927.

15½ FT. RUNABOUT - Lyman. 18 h.p. Evinrude, remote controls, etc. In water, ready to go. R.A. Beth, Ext. 2263 or ATLantic 6-8215.

CAR POOLS

Would like to form car pool to NYU for Monday evening classes for fall semester. J. Friedman, Ext. 2354.

Looking for 1 person to share driving from Lindenhurst area. S. Gaddone, Ext. 442.

Would like steady ride from vicinity of Bernice Dr., Bayport. Don Horne, Ext. 673.

Want drivers from Blue Pt. area to join existing car pool. Wilma Flannery, Ext. 2463.

FOR RENT

STUDIO APARTMENT - furnished, two rms. Large kitchen. Yaphank. \$70/mo. M. Sagese, YAPhank 4-3904.

HOUSE - Bellport, lovely spacious house and grounds. 4 bedrooms, living rm., dining rm. Sun porch, modern kitchen, third floor, recreation rm. in basement and greenhouse. Available for occupancy early September. 1 yr. H. Snyder, ATLantic 6-8875.

FOUND

ONE GREENBACK.

LEATHER POCKETBOOK - found in women's lockers at swimming pool. Ext. 2107.

LOST

RAINCOAT - Plymouth label. On or about Aug. 20, half of interior lined with Tartan. Finder please call Ext. 572, D. MacKenzie.

SMALL PLASTIC BRIEF CASE - with a PW insignia on outside. Contained papers important to loser and a slide rule. Call J.K. Cannell, Ext. 590.

WANTED

2 BEDROOM HOUSE - for rental by end of October. Prefer E. Patchogue, Patchogue, Bellport area. ATLantic 9-0919.

FRIENDS OF COLUMBIA UNIVERSITY - to attend a garden tea party on Monday, September 5 (Labor Day), in Rocky Point. Call Treuenfels, Ext. 2448 for details.

TOOL SHED - used. About 9 by 12 ft. Ext. 688.