

the Bulletin Board

VOLUME 14 - NUMBER 1

Published by the BNL Personnel Office

SEPTEMBER 7, 1960

PENSION PLAN DISCUSSIONS

Members of the Personnel Office recently began a schedule of talks to employees on our retirement plan, its benefits and features. They will visit every department in the Laboratory to speak on this subject. Sessions are arranged through the departmental offices and employees will be advised as to the time and place of the talk in their departments.

NAVAL RESERVE SEMINAR

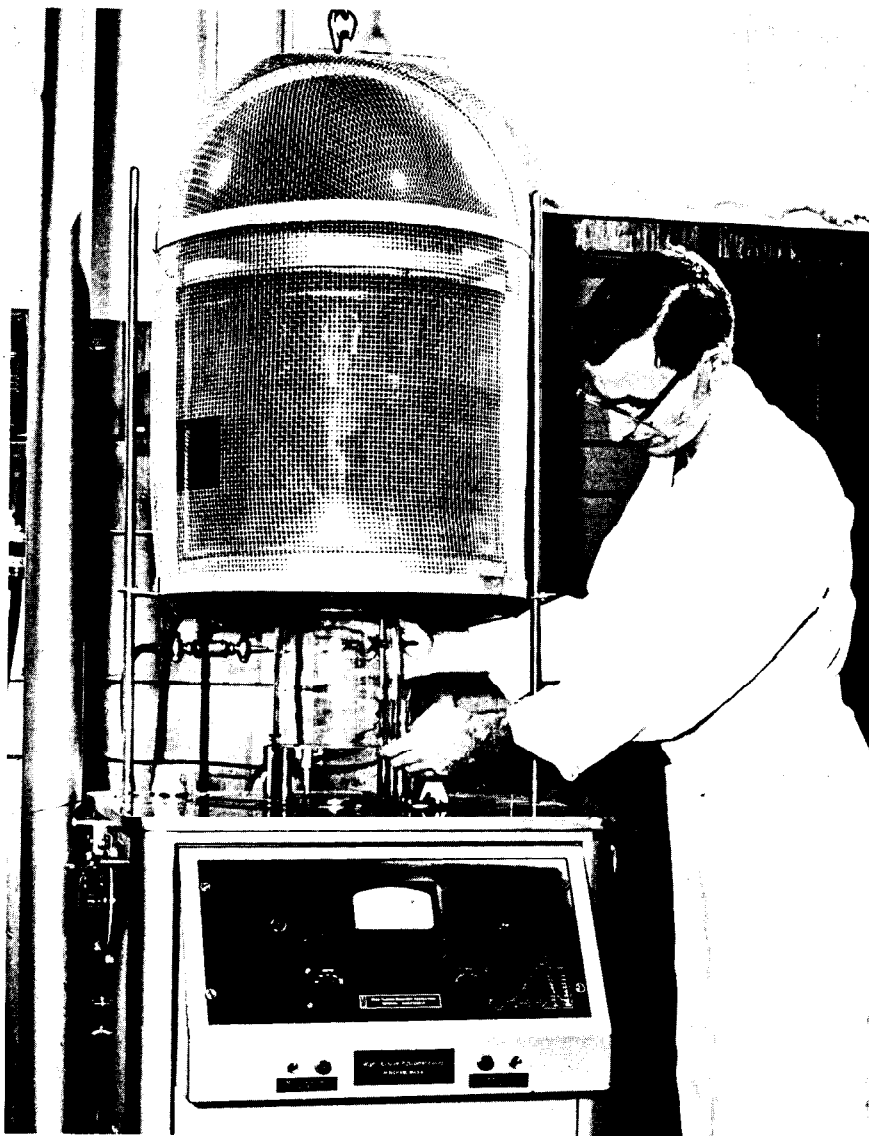
The 8th Annual Naval Reserve Nuclear Sciences Seminar at Brookhaven will start on September 11th. As in the past, this seminar is co-sponsored by the Office of Naval Research through our local Naval Reserve Research unit and by the AEC and BNL. The seminar this year is entitled, "A Basic Workshop In Health Physics" and the majority of lectures will be given by members of the BNL Health Physics Division. Approximately forty-five Navy, Army and Air Force Reserve Officers are expected to be ordered to this seminar for their annual two weeks training duty. Lectures will be open to a limited number of civilian personnel - for further information on the program contact either Jere Austin at the Hot Lab (who is C.O. of the local reserve unit) or Len Baker at the Safety Office (who will be on active duty as representative of the Commandant of the Third Naval District).

VISITORS TO BNL

A number of American and foreign physicists who have been attending the Rochester High Energy Physics Conference will visit BNL during this week. They will see the laboratories and accelerators, and discuss the Brookhaven research program with members of the staff.

The Defense Research and Engineering Advisory Group on Electronics Parts to the Defense Department will hold a meeting here on September 8 and 9. The function of this group is to coordinate projects being carried out by the Joint Services dealing with materials study as it relates to the general subject of electronics.

THE TUBE SHOP



Technician operating vacuum coater.

The Instrumentation Division provides the Laboratory with a number of types of services. Some of these varied services are offered by a small group working in the Tube Shop. The title stems from the fact that the group's principal function in the early days of the Laboratory was to produce special Geiger-Muller and proportional radiation counters needed by experimenters and unavailable commercially, work which employs many of the specialized techniques used in the manufacture of vacuum tubes.

As research workers throughout the Laboratory found that these specialized techniques could often be employed to advantage in the solution of other technical problems, the group's function continually increased in scope. The

(Continued on Page 2)

TUBE SHOP—Cont'd

four man group has found answers to problems involving high vacuum techniques for a large number of the experimental groups at BNL. The Tube Shop makes to order particle detectors such as Geiger-Muller counters, proportional counters, BF_3 neutron counters, ionization chambers or fission chambers, processes discharge tubes and fills them with appropriate gas; and mounts special scintillators, among many other items.

Frequently there are requests for leak-checking some component of a vacuum system, for repair and calibration of vacuum-measuring instruments, or checking the performance of a counter or scintillator. The group checks photomultipliers for the Purchasing Department prior to acceptance and placement into general stock. Requests for vacuum coating continue to increase in number and in the size of objects to be coated.

Considerable use is made of vacuum evaporation techniques for producing accelerator targets. Many hours have been spent in polishing plastic light-pipes and scintillators and in cementing these to photomultipliers to form scintillation detectors. A number of "quickie" jobs are performed, such as silver brazing a metal joint in a hydrogen atmosphere or in vacuum, electroplating some small piece of equipment, spot-welding a thermocouple or some small structure, producing a transparent conductive coating on glass, and chemically silvering a Dewar flask.

The Tube Shop's stock of such items as metal-to-glass seals, fine wires, and epoxy cements have been found very helpful in emergencies by people in many departments throughout the Laboratory. A number of standard items are stocked, but most of the Tube Shop's work is on a "made to order" basis. The broad experience of the group in special techniques is often a source of valuable information to the research workers, and consulting on various problems in technique is an important function of the Tube Shop.

DIVERS CLUB MEETING

The monthly meeting of the Brookhaven Divers Club will be held on Monday, September 12 at 8 p.m. in the Recreation Building on York Lane. On tap for the evening will be films of the previous dives this summer, as well as a discussion of another dive to South Shore wrecks on September 17. All members interested in an exploration trip to the "quadrant" wreck should be present. Guests and prospective members are always welcomed.

Remember the date: Monday, September 12; Time: 8 p.m.; Place: Recreation Building.

PROPERTY MANAGEMENT

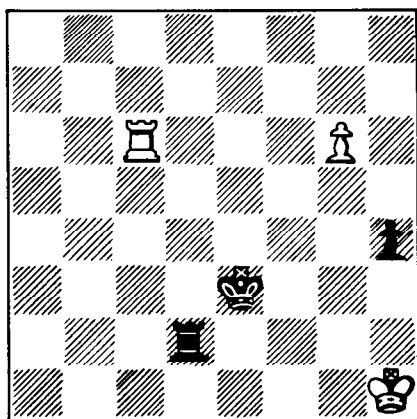
Property Management has located some heavy steel cylinders. These are liners for Navy gun barrels and can be obtained for the cutting and shipping charges. The dimensions of these liners cover a wide range of diameters and wall thicknesses; some of which are shown below:

38" I.D., 49" O.D., 20' long
36" I.D., 49" O.D., 10' long
28" I.D., 39" O.D., 20' long
6.5" I.D., 18" O.D., 40' long
7.5" I.D., 18" O.D., 40' long

If interested, call Property Management on Extension 347.

BNL SAFETY RECORD

11 DISABLING INJURIES at BNL thus far in 1960 (for a rate of 3.42 injuries per 1,000,000 manhours - compared to the AEC Research Contractor rate of 1.63).

CHESS PROBLEM

This week's problem was submitted by Dr. J.S. Robertson of Medical. Very interesting end game. It is white's move. Watch out for stalemate. Better set up the board for this one. Answer on Page 4.

THEY LIKE BIKES

The Laboratory's new fleet of bicycles has become a very popular mode of transportation on site. There are 40 of the bikes at the present time.

METALMEN UPSET THUMPERS

Concluding a neck and neck softball season, Metallurgy and the Thumpers went down the stretch and into a do-or-die last game last Thursday to determine the winner of our National League. Les Lawrence started the action by belting a home run in the first inning. The Metaliks scored one in the first, pushed another over in the second and two more in the third to account for all the runs in their 4 to 1 victory. Peters' three hits and Thompsons' clutch hitting contributed to the Thumpers' downfall. Rob Jones pitched a well controlled game and was given errorless support by his teammates.

CONGRATULATIONS METALLURGY

and our sincerest best wishes in the coming playoffs. —THUMPERS

BNL WORLD SERIES

Now that both our leagues have finished their schedules and the winners declared we get set for our fall classic - the playoff for the BNL Championship between the Cosmotron (Brookhaven League) and Metallurgy (National League).

SCHEDULE

September 6	1st game	Princeton Field
September 8	2nd game	Brookhaven Field
September 13	3rd game	(if necessary)

WEEKLY SAFETY HINT

Bob Gibbs, Safety Coordinator at the Cosmotron says, "Every so often we hear about a compressed gas cylinder which has fallen, broken its valve, and taken off like a jet-propelled rocket. Keep cylinders well secured". (See GS 8 - BNL Safety Manual).

BRANDON**RETAINS****CROWN**

Adept defensive tennis marked the replay of last year's thrilling finals match as J. Brandon again faced R. Ekholm for the BNL Singles Championship. The match resulted in a smashing come-from-behind victory for Brandon (3-6, 6-3, 6-3).

The Doubles final pitted last year's champion duo of Merkle and Kevey against a pair of BNL newcomers Auskern and Fleitman. This hard fought match produced a repeat victory for the Merkle and Kevey team (6-0, 2-6, and 6-4).

After the first two sets the singles encounter shifted to a keen battle of baseline defensive play. This type of game resulted in long exciting volleys that are usually missing from the offensive style of tennis.

The outstanding net play of Andy Kevey was the difference in the doubles match. His speed of foot and sharp volleying produced many points for his team. This was an extremely tight match after the first two sets were divided. The third set was tied at 4 all when the champions were able to break through Fleitman's service. In the last game the losers were able to stave off one match point before a return by Kevey brought final victory.

BERA will present trophies to the winner and runner up in the singles and to the doubles champions. Vacations will delay the presentations until the week of September 19.

BOWLING

Little by little the entries are coming in and the indications are that we will have leagues in the Patchogue Bowling Center, Patchogue Recreation and Port Jefferson Bowling Alleys. Entries are still being accepted in the Men's and Women's divisions. There is still time for you or your team to join the game. Plans are being made to start knocking them down in late September. Entry blanks may be picked up at and returned to the Personnel Services Office, 58 Brookhaven Avenue.

PICK UP DU BRIDGE BOOKS

There are still some people who have not yet picked up their DuBridge Books at Personnel Services, 58 Brookhaven Avenue. Please do so as soon as possible.

CATALOGS AT PERSONNEL SERVICES

Catalogs of C.W. Post, Adelphi, Hofstra, and several other colleges and universities are available at the Personnel Office, 58 Brookhaven Avenue.

WEST SIDE STORY AT WESTBURY

WEST SIDE STORY, Leonard Bernstein's widely acclaimed musical, will play at the Westbury Music Fair until September 18. This is the last attraction of the 1960 summer season.

20% discount tickets are available to BNL employees and their families. Seat reservations and payment are made directly through Personnel Services, 58 Brookhaven Avenue. PAYMENT MUST BE BY CHECK MADE PAYABLE TO WESTBURY MUSIC FAIR.

ICE CAPADES DISCOUNT TICKETS

Exchange discount tickets to the ICE CAPEDES OF 1961 are available at Personnel Services, 58 Brookhaven Avenue. The discount tickets may be purchased for all evening performances until September 14, excluding Saturdays.

POOL, GYM CLOSED

The swimming pool and the gymnasium have completed their summer schedules. Both facilities will be closed during the month of September. Announcements of future schedules will be made in THE BULLETIN BOARD for the fall season.

RECREATION OFFICE CLOSED

The Recreation Office will be closed beginning Tuesday, September 6, through Friday, September 16. For recreation information, contact R. Vogt at the Personnel Office, 58 Brookhaven Avenue, Ext. 2107.

ANSWER TO CHESS PROBLEM

White wins by:

WHITE	BLACK
1. R - K6 check	K - B6
2. P - N7	R - Q
3. R - B6 check	K - N6
4. R - N6 check	K - R6
5. K - N	R - KN
6. K - B2	K - R7
7. R - B4	P - R6
8. R - B3.....	

PROCESSED ISOTOPES CATALOG

The Hot Laboratory has issued a catalog of the processed isotopes available from BNL. At present Brookhaven is the only source of supply in the United States for the isotopes listed, in the form shown.

A major source of other isotopes is Oak Ridge National Laboratory. At the present time medical researchers are the biggest users of BNL's isotopes; some are sold for industrial tracing experiments and geochemical studies (such as the dating of rocks). All customers must be licensed by the USAEC.

DON'T SEND FILM THROUGH LAB MAIL

The film service at Personnel Services is on a self-service basis. Please do not send film for processing through the inter office mail.

CLASSIFIED ADS**FOR SALE**

1955 PLYMOUTH - Savoy 4 dr. sedan. 6 cyl. Runs well. \$450. A. Russo, Ext. 639.

1941 PONTIAC - \$50 will take it. 2 dr. sedan, with 1949 Plymouth motor. Car runs, has 4 new 4-ply tires with 4 new tubes. Bill Walsh, Ext. 481.

1957 NEW YORKER HARDTOP - power steering, brakes, and windows. Snow tires. Must sell. After 6 p.m. ATLantic 9-0632.

1951 PLYMOUTH - 4 dr. sedan. Mechanically excellent condition. Tires low mileage, new muffler. Highest bidder. Ext. 541 or GRover 5-5167.

1955 PLYMOUTH - 2 dr., std. trans., good cond., very reasonable. Owner returning to college. Ext. 2302 or Yaphank 4-6333. Ray Bruno.

1950 FORD - inspected, runs well. \$100. Bookless, Ext. 572 or ATLantic 6-8698.

1950 STUDEBAKER - 2 dr. sedan. Good running cond. \$85. SAYville 4-4385.

1950 CHEVROLET - 2 dr. sedan, r&h, good running cond. \$125. Ext. 2119. BELLport 7-0866 after 5:30 p.m.

1959 FORD STATION WAGON - Country Squire, white, 9 pass., whitewalls, power steering, brakes, and seats, spotlight, excellent cond. Sally, Ext. 319.

1953 FORD - V-8, 2 dr. sedan. R&h, std. shift. Excellent cond. \$295. Will haggle. ATLantic 1-7467.

'51 OLDS ENGINE - 4 barrel manifold. Make offer. ATLantic 1-7467.

TRADE - would like to make some kind of reasonable trade; a 1954 4-dr. Ford sedan in good running cond., for some kind of small foreign car. Bill Walsh, Ext. 481.

MOTORCYCLE - Red & white 180 lb. Harley-Davidson. 1957 model in good cond., used for only 2 mo. since its purchase, 6,000 mil. Cruising speed 40-50 m.p.h. 70 miles per gal. of gas. Owner leaving Lab. \$305. Don Reinhardt, Ext. 2259.

BEETLE CAT BOAT - Excell. racing record. In water ready to go. \$500. ATLantic 6-8886 after 5 p.m.

NARRASKETUCK - No. 62. In water, top condition, 4 mainsails, 3 jibs. Asking \$775. BELLport 7-0795.

OWENS CRUISER - 25 ft. 1960. New this season. Completely equipped. D. Riel, Ext. 753 or 572.

8 FT. PLYWOOD PRAM - \$50. Ext. 572 or ATLantic 6-8698. Bookless.

22 FT. CRUISER - 1956 Owens. Twin bunks, foam rubber mattress, head, navy top and side curtains. Best offer accepted. E. Collins, BELLport 7-1052. Ext. 391.

10 FT. HOMEMADE ROWBOAT - and motor. Very strong boat. Both for \$60. Ed Mignani, WAding River 9-4434 anytime.

WASHING MACHINE - automatic. 1959 Norge (highest tested in Consumer's Report). Like new. Asking \$95. original price, \$200. Ekholm, Albion Rd., Rocky Point, SHoreham 4-2014.

10 IN. TRICYCLE - Also 16 in. chain drive tricycle. S.S. Garrett, Ext. 2123 or ATLantic 4-1002.

SPEAKER SYSTEM - 12 in. woofer, multi-cellular horn type tweeter in Jensen bass ultraflex formica finished cabinet. Best offer takes all. Ext. 772, J. Bauenfeind.

RECEIVER - brand new and boxed Motorola FM 900 auto fm receiver. 12 volt negative ground cars only. Can be seen at Building 911 (Tech Shop). Best offer, or trade for 6 and 2 meter transmitter or receiver or cash. \$129 value. B. Howard, Ext. 2314.

PORTABLE RECORD PLAYER - Voice of Music. \$35. Hendrika Rosemeyer. Ext. 301-24; after 5 call Ext. 2280.

U.S. DIVERS - single stage regulator, 72 cu. ft. tank with depth compensating safety reserve, 12 lb. weight belt. All in excellent condition. \$80 takes everything. Gil, Ext. 2129.

SPEAKER - handsome Able wood corner speaker with 15 in. Altec coaxial speaker. Lists at \$300. Asking \$175. Also TV Master antenna for \$15. S. Jungreis, Ext. 301.

SLIDE RULE - K and E. Log log duplex decitrig. \$15. B. Comfort, Ext. 2221.

WALNUT ARMCHAIR - Avacado Naugehyde covered \$25.; two matching avacado naugehyde chairs \$20. each; Thin-line Air Conditioner, like new condition \$100.; one 2-piece sectional sofa, light green, foam rubber, excellent condition \$100.; one typewriter table with casters \$20. Call Eleanor Miller, Ext. 2172.

HOUSE - Midland Ave., Mastic. 4 bedrooms, hot water heat, 80x100 Anchor fenced plot, full basement partially finished. Sacrifice \$11,500. ATLantic 1-8532 anytime.

LARGE BABY'S CRIB - Like new. Cost me \$125. Asking \$35. ATLantic 1-9638 during day.

FOR RENT

FURNISHED APARTMENT - or housekeeping rooms. 9 miles from Laboratory. Ext. 323 or ATLantic 1-6237.

HOUSE - Selden. 2 bedrooms. Full basement and garage. Partially furnished. Oil heat, gas stove and hot water. Storms and screens. \$80 plus security. No more than one child. F. Mo, Ext. 540.

HOUSE - Bellport, lovely spacious house and grounds. 4 bedrooms, living rm., dining rm. Sun porch modern kitchen, 3rd floor, rec. rm. in basement, greenhouse. Available immediately. Very reasonable. 1 yr. H. Snyder, ATLantic 6-8875 or Ext. 366.

WANTED

BEETLE CLASS SAILBOAT - R.C. Anderson, Ext. 741 or BELLport 7-1402-R.

CAR POOLS

Would like to form or join car pool to Hofstra Tues., Wed., Thursday., evenings. R. Drager, Ext. 2468.

Would like to form or join car pool to Adelphi College, Monday evening classes, 6:30 to 10:30, fall secester. K. Fuchel, Ext. 415.

Fifth member wanted to join car pool from W. Babylon. R. Drager, Ext. 2468.