

# the Bulletin Board

VOLUME 14 - NUMBER 3

Published by the BNL Personnel Office

SEPTEMBER 20, 1960

## NOTES ON THE DONNA-MITE BLAST

September 12, 1960

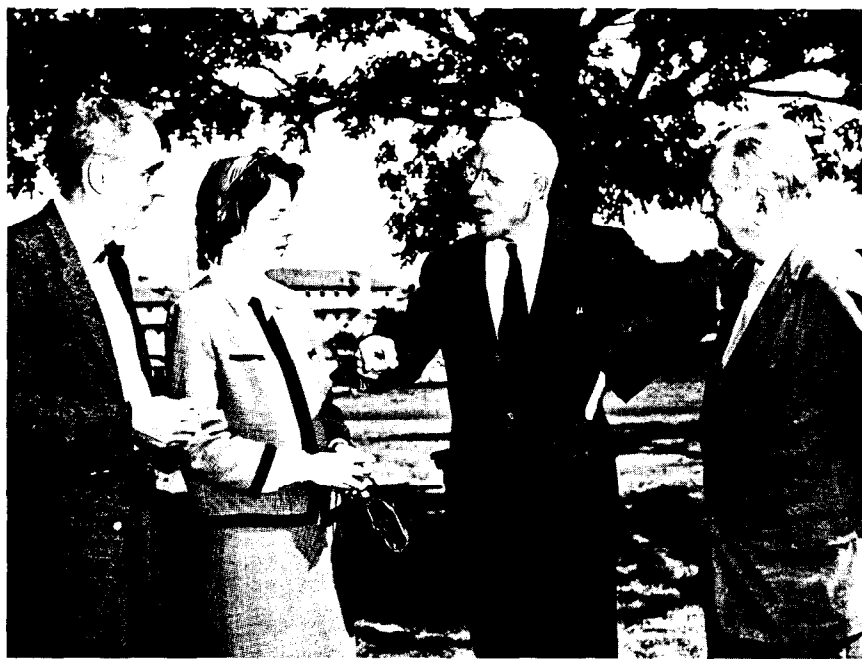
The hurricane, after having passed through North Carolina during the evening of September 11, curved from a northeasterly to a northerly course off the Virginia and New Jersey coasts, so that the eye of the storm passed over central Long Island at approximately 3:45 p.m. EDT. There is considerable confusion about the exact path of the storm center, owing to the fact that the eye was very broad and poorly defined. This is probably attributable to the fact that the hurricane had already spent much time over land and had changed markedly in many of its characteristics. It seems quite certain, however, that the center passed between Hempstead and Brookhaven, since the official records showed a wind direction change from northeast through south to southwest at Brookhaven, while the shift proceeded from northeast to north and northwest at Mitchel Air Force Base. Personal observations at various points in between confirm the existence of a very large region of light winds in the storm center.

We may consider ourselves fortunate that much of the energy of the storm had been dissipated over land before it reached here, since passage of the center slightly to the west placed Brookhaven in the least favorable position with regard to the storm track. As it was, the winds reached peak speeds of 90 mph from the southeast at the 300 ft level approximately at 2:10 p.m., and at almost the same time, a peak of 65 mph was observed at a height of 37 ft above ground. Following the passage of the storm center, the wind speeds rose again, but from a westerly direction. The record of the 300 ft wind speed, shown in the photograph, reveals both the peak regions and the marked lull as the center of the storm passed.

Other interesting statistics are the total rainfall of 4.64 inches which fell during the entire period of the storm (including Sunday), and an amazingly rapid accumulation of rainfall in the hour between 1 and 2 p.m. when 0.94 inches fell. The pen of the Brookhaven recording barograph dropped off the

(cont'd on page 2)

## 1960 PEGRAM LECTURES



Left to right: Dr. R.C. Anderson, 1960 Pegram Committee Chairman, Mrs. Jean Dubos, Dr. Rene Dubos, 1960 Pegram lecturer, Dr. S.A. Goudsmit, 1961 Pegram Committee Chairman.

The 1960 George B. Pegram Lecturer is Dr. Rene Jules Dubos. Dr. Dubos, described as "... a witty Frenchman whose erudition and command of his adopted language extend well beyond the confines of a laboratory, (who) stands in no need of popularized interpretation," will give four lectures on October 10th, 12th, 14th, and 17th on the general subject "THE DREAMS OF REASON." The title originally announced was "SCIENCE AND UTOPIAS."

The titles of the specific lectures in the series to be presented by Dr. Dubos are as follows: on October 10th, "SALOMON'S HOUSE AND THE BACONIAN WORLD"; on October 12th, "MEDICAL UTOPIAS"; on October 14th, "ILLUSIONS OF UNDERSTANDING"; and on October 17th, "THE DEHUMANIZATION OF THE SCIENTIST."

In the first lecture, Dr. Dubos will discuss the rise of the experimental method, the influence of Bacon and the development of the scientific academies. He will then examine the uses of science (exemplified by Faraday), the effects of industrialization and the appearance of concepts of and attempts to realize utopias.

The interaction of medical advances and disease, the appearances of new diseases for old and a description of a social philosophy of medicine are the subjects of the second lecture.

Dr. Dubos will discuss in the third lecture on "ILLUSIONS OF UNDERSTANDING" several topics: science and curiosity, the pleasures of understanding, life versus the mechanisms of living, and science and primary perceptions.

The final lecture examines the various views taken in recent times of the scientist and his science. For example, Ortega's position in the "Revolt of the

(Continued on Page 2)

**LECTURES—Cont'd**

Masses" will be discussed. Some subtitles are "the scientist as barbarian", "the scientist as philosopher" and "science and its public."

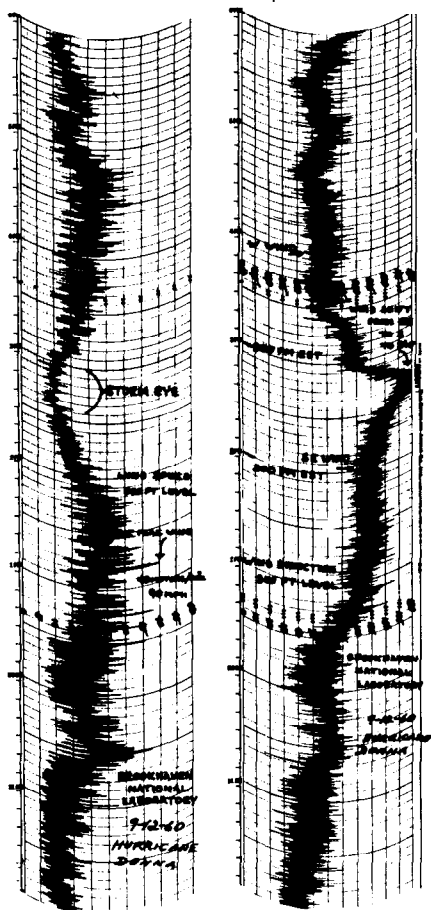
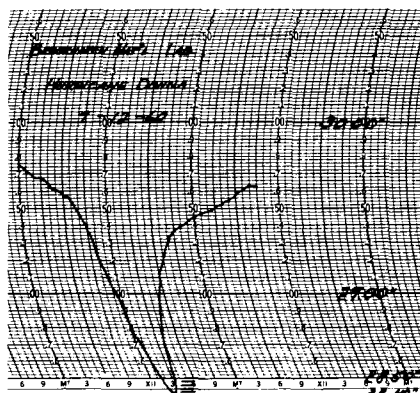
Dr. Dubos joined the Rockefeller Institute in 1927 and has had a brilliant career as a bacteriologist. He first demonstrated the feasibility of obtaining germ-fighting drugs from microbes 20 years ago. His pioneer work on producing gramicidin and tyrocidine (too toxic for internal use, but still used today for infected wounds) helped pave the way for subsequent research leading to the development of other antibiotics. Among his other scientific achievements are the development of a rapid method for growing tubercle bacilli in submerged cultures, important in the diagnosis and experimental study of tuberculosis; investigations on the mechanisms of acquired immunity, as well as of natural susceptibility and resistance to infection – with special emphasis on tuberculosis and other bacterial diseases.

Dr. Dubos is well known as an author and lecturer as well as a scientific investigator. His latest volume "The Mirage of Health", published last year, has attracted much favorable comment. His books also include: "Bacterial and Mycotic Infections of Man", third edition in 1958; "Biochemical Determinants of Microbial Disease" in 1954; "The White Plague – Tuberculosis, Man and Society" in 1952; "Louis Pasteur – Free Lance of Science" in 1950; and "The Bacterial Cell" in 1945.

A small display of Pegram Lectureship material may be seen in the lobby of the Brookhaven Center.

**DONNA (Continued)**

base of the chart, but the mercury barometer showed a minimum pressure of 28.375 inches at 3:50 p.m.

**DONNA ANEMOMETER READING****DONNA BAROMETER READING**

Many newspaper reporters, seeking superlatives as usual, have described this storm as the most destructive hurricane on record. It may be in the economic sense, since it did affect a large number of communities and both the inventory and value of property available for damage have increased enormously in the past two decades. However, as far as Long Island is concerned, it was a relatively mild hurricane. Peak wind speeds, for example, in Carol (1954) reached 125 mph for a brief period, and certainly in the 1938 hurricane, the winds were very much higher than either of these later storms. Estimates suggest peaks of 150 mph or more, and the truly extensive damage which accompanied the storm over eastern Long Island leaves no doubt of its physical supremacy.

**FOLK DANCING BY THE "BIRDS"**

Liz and Neil Lark will again lead folk dancing each Monday evening this fall, starting next week, September 26th. Dancing will be held in the Recreation Building in the Apartment Area from 8:00 to 10:30 p.m. About the first hour of each session will be devoted to basic instruction for beginners. The remainder of the time will be spent teaching somewhat more difficult dances, reviewing, and enjoying the dances we already know. Our "repertoire" includes group and couple dances from many different countries and regions but excludes American square dances. (We're not prejudiced - we're just not good callers.)

There will be a fee of \$3.00 per person for the entire series, which will last until about the first of the year. However there will be no charge for the first evening.

**CAR CLUB**

The Car Club is planning an auto trip to the Danbury Fair on the week-end of October 8. It will be a very beautiful drive at this time of the year. Why don't you make plans to join us? Further details will be in next week's BULLETIN BOARD.

**CAMERA CLUB**

The BNL Camera Club will hold its first meeting of the fall season on Tuesday, September 27th at 8 p.m. in the Recreation Building. At this time there will be a showing of color slides from various parts of the world. Anyone who has color slides of foreign countries that they would like to show should contact Bill Cohen, Ext. 564 or Paul Michael, Ext. 550.

Anyone who desires to show some slides from abroad or see the showing or is generally interested in photography is urged to attend. A brief business meeting will precede the showing.

**BNL SAFETY RECORD**

11 Disabling Injuries at BNL thus far in 1960 (for a rate of 3.24 injuries per 1,000,000 manhours – compared to the AEC Research Contractor rate of 1.58).

**UPTON RIFLE - PISTOL CLUB**

All U.R.P.C. members are invited to the next .22 rifle D.C.M. match on Thursday, September 22 at 5:30 p.m. on site. Free ammo and targets.

**Happiness makes up in height  
for what it lacks in length.**

— Robert Frost

## WEEKLY SAFETY HINT



Ray Stong, Safety Representative to the Nuclear Engineering Department, asks:— "Do you know the location of the fire extinguisher and of the fire alarm box nearest your place of work? If not, **NOW** is the time to find out!

## ALL VEHICLE DRIVERS

About 450 BNL employees and guests are holders of U.S. Government Motor Vehicle Operator's Identification Cards which will expire this month. Check yours.

Also check your state operator's or chauffeur's license. This too may expire at the same time.

Upon renewal of your state license, your Government permit must also be renewed, if you are to drive a Government vehicle. You are not permitted to drive a Government vehicle unless you have a valid permit.

Renewal forms for the Government permit are being distributed via inter-office mail. If you do not receive your form, contact the Security Office, X-2392.

## POOL, GYM CLOSED

The swimming pool and the gymnasium have completed their summer schedules. Both facilities will be closed during the month of September. Announcements of future schedules will be made in THE BULLETIN BOARD for the fall season.

## TV TROUBLE SHOOTERS GUIDE

Do-It-Yourself TV Trouble Shooter Guides are on sale at Personnel Services, 58 Brookhaven Avenue.

## CONTEST LURES MANY FISH TALES



It is time to start planning your fall fishing trips. With September here, the best of Long Island fishing is under way. Surf casters and boatmen are really getting into Bluefish and Striped Bass, and the fall run of Flounder and Blackfish has started.

Stripes and Bluefish entries are really pouring in. E. Jackson's 7 lb. 8 oz. Striper and K. Jellett's 4 lb. 3 oz. Blue are the largest yet. Both were caught surfcasting on the South Shore. H. Farrell has finally broken the ice with a 25 lb. Tuna entry.

The BERA Fishing Contest is open until October 31st, so there is still time to yet in your entries. Any size fish of an eligible species can be entered, so weigh them up. All entries are on display at the Recreation Office bulletin weigh them up. All entries are on display at the Recreation Office so come over and see them. On the Recreation Office bulletin board you will see a list of the top three entries in each species to date.

The FISHERMAN OF THE YEAR AWARD has been established and will be determined in the following manner:

3 points will be awarded for the first place entry in each species. 2 points for each second place entry.

1 point for each third place entry.

The person having the greatest accumulation of points shall receive the FISHERMAN OF THE YEAR AWARD.

In case of a tie, that person in the tie who has the next highest entry in any species will be the winner.

Subsequent ties will be broken in the same manner.

## THE TOP ENTRIES TO DATE ARE:

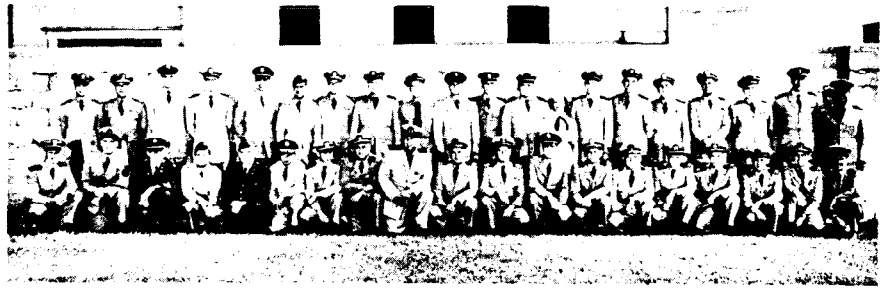
Striped Bass	7 lb. 8 oz.	E. Jackson
Sea Bass	No Entries	
Blackfish	5 lb. 2 oz.	F. Cermak
Bluefish	4 lb. 3 oz.	K. Jellett
Cod	24 lb. 7 oz.	N. Sowiak
Flounder	1 lb. 13 oz.	A. Kokinelis
Fluke	4 lb. 10 oz.	W. Hansen
Kingfish	12.5 oz.	W. Castleman
Mackeral	1 lb. 9 oz.	A. Beckwith
Porgy	3 lb. 0 oz.	A. Schroeder
Tuna	25 lb. 0 oz.	H. Farrell
Weakfish	2 lb. 14 oz.	J. Klein
Brook Trout	No Entries	
Brown Trout	12 oz.	K. Jellett
Large Mouth Bass	2 lb. 2 oz.	J. Klein

GET YOUR ENTRY BLANKS FOR THE CONTEST AT THE RECREATION OFFICE.

## NAVAL SPACE TALKS

A common meeting of the Naval Reserve Research Company 3 - 9 and the Suffolk County Council of the Navy League will be held at the Brookhaven Center on September 21, 1960. After the dinner, a lecture will be given at the Research Staff Lounge by Capt. R.F. Freitag, USN, Astronautics Officer, Bureau of Naval Weapons. "The Navy in the Space Age" will be the subject of his talk. Any employee wishing to attend the talk is cordially invited.

## EIGHTH ANNUAL NAVAL RESERVE NUCLEAR SCIENCES SEMINAR, SEPT. 11-24, 1960



# SHOP YOUR CLASSIFIED ADS

## FOR SALE

1956 RAMBLER - 4 dr. sedan. R&H. In superb condition, 3 new tires. \$725. S. Killmann, Ext. 301, after 5 p.m. Ext. 509.

1955 FORD - 2 doors. Good running condition. \$395. C. Cantera, Ext. 2376.

1959 FORD STATION WAGON - Country Squire, white, 9 pass., whitewalls, power steering, brakes, and seats, spotlight, excellent cond. Sally, Ext. 319.

1951 PLYMOUTH - mechanically excellent condition, tires, low mileage, new muffler, 4 dr. sedan. Highest bidder. Ext. 541 or G.Rover 5-5167.

VOLKSWAGEN SEDAN - 1956, excellent condition. Ext. 301-14.

1958 OPEL REKORD - 2 dr. sedan. R&H, 33,000 miles, new tires and battery, clean and well kept. J. Uner, Ext. 2201. After 6 p.m. S.Ayville 4-4687-J.

1959 RENAULT DAUPHINE - heater, windshield washers, 11,000 mi., blue, excellent cond. \$300 down and take over low payments. J. Backes, Ext. 2341 or ATLantic 6-3224 after 5:30.

SAILBOAT - 19 ft. lightning class. In water. Good cond. R. Krueger, Ext. 301-69 or BELLport 7-0693-J.

16 FT. "MAINE FISHERMAN" BOAT - \$150 without motor. \$400 with 40 h.p. Scott-Atwater motor. Ext. 2268.

HOMEMADE ROWBOAT - 10 ft. and motor. Both for \$60. Very strong boat. E. Inignani, Beach Rd., Wading River. WA 9-4434.

23 FT. OWENS CABIN CRUISER - 1956, 96 hp. New valve job, sleeps 3, head, galley, \$200 of access. including elec. w. wiper and bilge pump, extra prop., spotlight, compass, waterskiis, etc. Excellent cond. \$2150. Mapes, Ext. 427 or Yaphank 4-3118.

30 FT. YAWL - new, Aux. eng., dacron sails and stainless steel rigging. Sleeps 6 in three separate compartments, encl. head, dining area. Very roomy and fast. Trade for smaller boat or sell for \$7750 (lists at \$9800). Ext. 2324 or Port Jefferson 8-3371-J.

HOUSE - 6 yr. old Cape Cod. \$9,500. 3 master bedrooms, large Hollywood tile bathroom, living rm., and kitchen. Hot water heat (oil) full cellar. 9x12 patio. 100x100 landscaped. Stove. Ref., washing mach. all electric. G.Rover 5-2715.

SNOW TIRE - Mobile super traction, tube type, 4 ply, size 6.70-15. \$7. Not a re-cap. R. Walton. Ext. 2181.

TWO SNOW TIRES - size 6.70-15. \$30 takes tubes and rims also. Worth \$58 new. W. Berg, Ext. 2467.

BEDROOM SET - good condition. \$25. ATLantic 1-8015 after 6 p.m.

AIR CONDITIONER - RCA, 6000 BTU/hr. Operates on 115 volts. 1953 model, works fine. \$40. B. Schwartz, Ext. 2218.

ELECTROLUX - vacuum cleaner, \$15 and Craftsman reel-type lawnmower, \$20. J. Ferrer, Ext. 791 or ATLantic 4-0792.

HOTPOINT REFRIGERATOR - 30 lb. freezing compartment. Good running condition. 4 yrs. old. \$100. Also Kenmore automatic washing machine. 10 lb. capacity. Control water temp. level. Full timing cycle 2½ yrs. old. Excellent condition. \$100. Jake, Ext. 2208.

BENDIX - semi-automatic washer. Very good condition. \$30. Ext. 292 or Port Jefferson 8-2107.

VACUUM CLEANER - Hoover constellation No. 85. Like new. After 6 call MOhawk 9-3293.

BABY GRAND PIANO - JUniper 7-0711.

PORTABLE PHONOGRAPH - VM 4 speeds. Must sell, leaving country. \$30. Hendrika Rohemeyir, Ext. 301-24 or 2280 after 5 p.m.

CITIZEN'S BAND TRANSCEIVER - Lafayette He 15. Seldom used. Like new. Must sell. R. Young, Ext. 590.

HERMANOS HEW SHOTGUN - Brand new, never used. Double 12 gauge. \$120. R. Giambalvo, Ext. 574.

MYNAH BIRD - Complete with cage. Talks very well, no rough language. Working couple, no time to properly care for it. Worth \$250 - selling for \$50. Ext. 2352 or MOhawk 9-9389 after 7 p.m.

COFFEE TABLE - oval mahogany Duncan Phyfe, excellent condition; pair wing back chairs; lounge chair; 20 gal. stainless steel aquarium, pump, and accessories; chest of drawers; snow tire, tubes; clothing; rowboat; outboard motor; miscellaneous. All items in good condition, priced to sell. 379 Greene Avenue; S.Ayville 4-3269.

## FOR RENT

ULTRA-MODERN HOUSE - fully furnished, 2 bedrooms, oil hot water heating, 20x16 living room - one wall thermopane glass doors, big patio, fireplace, built-in oven and counter top range, full basement. Located in Center Moriches, 15 min. from Lab. Ext. 676 or ATLantic 4-1568.

## WANTED

'53 - '54 USED CAR - reliable, preferably manual shift. G. Czapski, Ext. 628.

BOAT TRAILER - for 14 ft. boat. In good condition. Park 7-5535.

CHILD'S CRIB - used, standard size. Yaphank 4-6589.

## LOST

PAIR OF CLIP-ON GLASSES - Call Ext. 2107.

## CAR POOLS

Fifth member wanted to join car pool from Lindenhurst - West Babylon area. Ray Drager, Ext. 2468.

One or two members wanted to join car pool from Islip - East Islip area. A. Weiss, Ext. 779.

Rider desiring ride from vicinity Bernice Dr., Bayport, D. Horne, Ext. 653.

Looking for fifth member to join car pool from South Huntington. I. Feigenbaum, Ext. 2207.

Riders wanted to Boston or vicinity. Leaving Lab Friday Oct. 17 - Return Sunday night Oct. 19. R. Rechtschaffen, Ext. 435.

Would like to form car pool to C.C.N.Y. or Columbia - Tuesday evening. A. Tranis, Ext. 2255.