

the Bulletin Board

VOLUME 14 - NUMBER 4

Published by the BNL Personnel Office

SEPTEMBER 27, 1960

LABORATORY SAFETY REPORT

To All Employees:

I am happy to report that the Laboratory recently surpassed its own previous safety record of continuous operation without a disabling injury. As nearly as can be figured, we reached 1,000,000 continuous manhours without a disabling injury at 4:00 p.m. on Monday, September 19.

The most significant aspect of this record is that there are among us today one or more employees who would, under previous conditions, have been disabled through accidental injury. It is also worth noting that the achievement will earn us recognition from the National Safety Council and from the Atomic Energy Commission; this is particularly gratifying in light of the fact that for some time we have lagged behind the safety records of our sister laboratories.

Congratulations are due to the supervisors who have line responsibility for safety, to the staff safety people who assist them, and to each and every employee who participated in the setting of this record.

—LELAND J. HAWORTH, Director

PHONE BOOK

The Laboratory Telephone Directory for issuance in November is being prepared for publication now. Any changes in building locations or extensions should be forwarded using BNL form 241 A to Communications Group, 2 Center Street, no later than October 7, 1960.

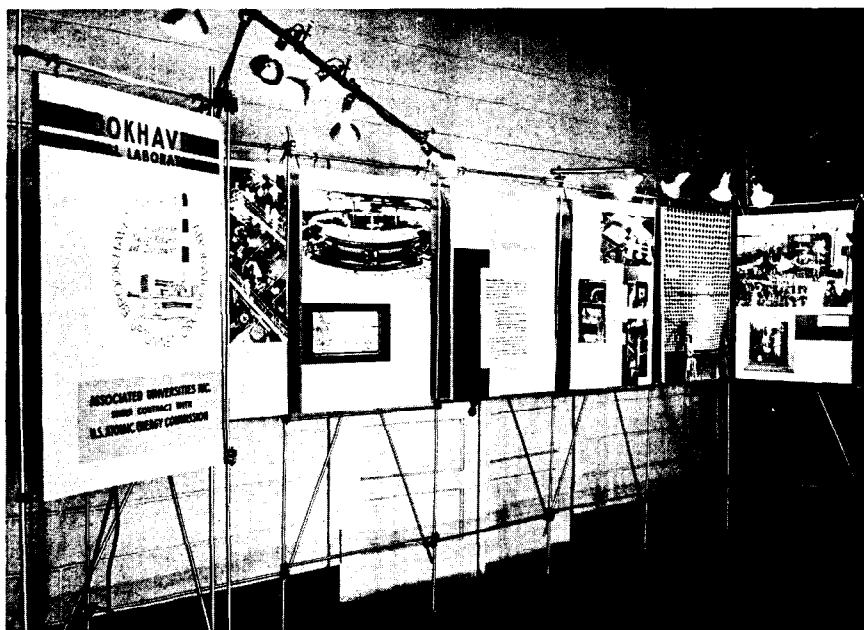
MICROMET SALE

Orders for Micromet accompanied by full payment are now being taken at the Personnel Office, 58 Brookhaven. No orders will be taken after Friday, October 14th.

THEATRE GROUP READING

On Tuesday, October 4th, there will be a reading of J.B. at the home of Ed and Jinney Sayre at 8 p.m. The Sayre's live on Old Barton Road which runs South from Montauk Highway (27A), a few feet west of the New Yaphank Avenue traffic light. Keep going one mile down until you reach an old farm house with large front porch.

THE BROOKHAVEN EXHIBITS



One of the BNL panels for showing at the Long Island Fair.

The interest and support of the general public in BNL is important to us for a number of reasons. One of the main reasons, perhaps, is the fact that the Laboratory operates on Government funds; thus, it is in a sense owned by the U.S. citizen, whose tax money supports us. We have, therefore, a definite responsibility to inform him on how he is investing in research. Another reason stems from the currently expanding national effort in all areas of science and technology, which is creating an ever-increasing demand for scientists and engineers. We must, therefore, do all we can to encourage students to adopt careers in such fields, and, more specifically, to help them and their instructors understand the need for basic research, and Brookhaven's role in filling this need.

Many of the Laboratory's responsibilities in the area of public information are met by the annual Visitors' Days, the provision of guest speakers at civic affairs, planned tours for special groups, brochures and pamphlets on various aspects of our research, visits by press representatives and science writers, and in response to hundreds of letters from students seeking assistance and advice on science projects and term papers. Another function in this general area is in providing exhibit materials for display at science fairs and expositions. By this means, it is possible to acquaint a great many people with the Laboratory, although, naturally, one cannot hope to convey much more than a very broad impression.

BNL exhibits can be considered in two categories - manned and unmanned. The manned display, such as those for our Visitors' Days, is attended by staff members qualified to provide explanations and answer questions. Thus, it can provide far more technical information than is possible with an

(Continued on Page 2)

BROOKHAVEN EXHIBITS—Cont'd

unmanned exhibit, which is able only to "speak for itself." Examples of the latter type are models of research devices, such as reactors and accelerators, with the principal component parts clearly labeled, backed by explanatory panels of pictures and text. The primary aim of this type is to help answer such simple questions as: "What is Nuclear Research?" "What does a reactor look like?" and "What does it do?"

The Laboratory has been active in the exhibit field since 1947, when a traveling exhibit was prepared here under joint AEC-AUI sponsorship. Starting with a several-months' stay at the American Museum of Natural History in New York City, it then toured the New England area. It included such "live" features as a diffusion cloud chamber and a small electrostatic generator, which were demonstrated by the staff members accompanying the exhibit. For each of the Laboratory's annual Visitors' Days, much effort is devoted to the preparation of displays which will capture the interest of the visitors. Various aspects of our research have been featured at a number of international expositions, including the Atoms for Peace Conferences at Geneva in 1955 and 1958, the World Agricultural Exposition in New Delhi, and atomic energy exhibitions in Tokyo, Karachi, and Cairo. During the next year, BNL will be represented in Buenos Aires, Rio de Janeiro, Caracas, and Lima.

The design and construction of our exhibits is an effective demonstration of teamwork: the scientists and technicians provide the basic ideas, which are then carried out by the craftsmen - the staffs of the Illustration Section, Photography, Carpentry Shop, Paint Shop and Machine Shops - to mention only a few of those involved. A recent example of the demands made, and met, by our staff in the exhibit field is afforded by the following incident. Last Spring, BNL loaned the reactor model, at the request of the U.S. Information Agency, for display at an exposition in Mexico City in July. Although due to be shown at the Suffolk County Fair in Islip, beginning September 14, this model was not returned to us from Mexico until September 8. Upon inspection, it was found to be badly battered with parts broken and missing, and paintwork marred in many places. Yet, in spite of the intervening weekend and Hurricane Donna, the model was completely repaired, and ready for the Fair, by the 13th.

Work is currently well under way on the exhibits for the 1960 Visitors' Days in late October; these are revised every year to incorporate new ideas on the best means of informing our visitors on some selected aspects of the Laboratory's many varied research projects. Prior to the Visitors' Days, however, some of these exhibits must be ready for the Science and Industry Exposition and Long Island Fair, to be held at Roosevelt Raceway, October 8-16. Formerly known as the Mineola Fair, this 118-year-old annual institution is now broadening its coverage to Suffolk County, and one entire floor of the Raceway grandstands will be devoted to displaying the scientific and industrial capabilities of the Island. Needless to say, as one of the area's most prominent research installations, BNL should be well represented on this occasion. We will show our reactor model, backed by a set of panels portraying our major research facilities; the Cosmotron model, with a panel on accelerators; and a biology display which includes a model, with live plants, of the gamma field, and demonstrations of the radioisotope as an ultraprecise measuring tool, and of radiation as an effective source of mutations in seeds and plants.

In the coming years, the Laboratory's activities in the exhibit field will undoubtedly expand, to keep pace with the need to inform an intelligent public on the new breakthroughs in nuclear research.

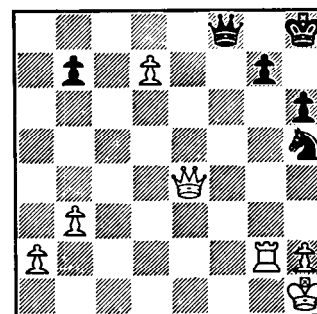
Fringe Patter

SOCIAL SECURITY CHANGE

A provision of the new social security amendments changes the rules for determining how earnings from work affect a person's right to receive monthly benefits. The change affects the social security beneficiary whose earnings from employment or self-employment go over \$1200 a year. For earnings from \$1200 to \$1500, \$1.00 in social security benefits will be deducted for each \$2.00 of earnings. For any earnings over \$1500, \$1.00 of social security benefits will be deducted for each \$1.00 in earnings. Under the old rule, which remains in effect until the end of 1960, a person is required to give up his entire monthly social security check for every \$80 or part of \$80 by which his earnings go over \$1200. The change in the new law eliminates the possibility that a person may lose considerably more in social security than he earns from his work - a possibility that existed under the old law.

The following rules remain unchanged:

1. Anyone earning \$1200 or less during a year will still be entitled to receive his full social security check for every month of the year;
2. Anyone who has reached his 72nd birthday will still be able to receive his full social security check for every month no matter how much he works and how much he earns;
3. A person will not have any deduction from his social security check for any month that his earnings as an employee are \$100 or less, or, if he is self-employed, for any month that he does not do substantial work in his business.

CHESS PROBLEM

Black to move

In this week's problem black is way behind in pieces and white is one move away from Queening its pawn. Still black can win. How?

Answer on Page 4.

COMING

SQUARE DANCE - B.E.R.A. DANCE

"Everything comes to him
who hustles while he waits."

—Thomas Alva Edison

BOWLING SEASON STARTS NEXT WEEK

We're off to another flying start as 38 teams have already signed up and are ready to enter the competition in five different leagues which will start action beginning the **First Week of October**. Leagues have been formed in the Patchogue Bowling Center and the Patchogue Recreation Alleys. In addition, for the first time, our bowlers will be represented in a North Shore league, rolling in the Port Jefferson Lanes.

Captain's meetings are underway and the following are scheduled for this week: Tuesday (Pt. Jeff League), Wednesday (Patchogue Rec. Wednesday League), Thursday (Patchogue Rec. Monday League), Friday (Patchogue Bowling Center Wednesday League).

This is your last opportunity to round up your team and file your entry. We still have two spots open which you could be squeezed into, if you file by this Friday.

Appointments of Secretaries and League Representatives will be made this week. The newly elected will serve on the Bowling Board which will hold its election of officers in the near future.

PHOTOGRAPHIC EVIDENCE



The big news this week is Dick Roth's 18 lb. 7 oz. striped bass shown above. Dick (Property Management) caught this fish on a plug early in the morning at Moriches Inlet. It tops the next entry by 7 lbs.

Bass are showing all along the South Shore and even the ladies are getting

METALLURGY SQUEAKS!!!



The winning run.

A battling, highly underrated, Cosmotron team from the "weak" league nearly pulled the biggest upset in BNL history. The league playoffs to determine the Lab softball champion was easily the closest and most exciting ever held at the Lab. The box scores printed below show that each game was won by the home team by one run in the last inning! (The first game went an extra inning).

Congratulations are in order to Metallurgy and Cosmotron for winning their respective leagues and playing championship ball.

	1	2	3	4	5	6	7	
METALLURGY	1	0	0	5	3	1	2	12 Third Game
COSMOTRON	1	2	2	6	0	0	0	11

	1	2	3	4	5	6	7	
METALLURGY	4	4	0	0	1	0	1	10 Second Game
COSMOTRON	0	1	2	3	3	0	0	9

	1	2	3	4	5	6	7	8	
METALLURGY	2	0	2	0	5	0	1	0	10 First Game
COSMOTRON	9	1	0	0	0	0	0	1	11

into the act. Irene Abrams caught a 6 lb. 10 oz. bass at Cherry Grove on a Hopkins lure.

Meanwhile bluefishing is slowing down with the largest entry in this species at 4 lbs. 15 ozs. Skindivers tell us that there are large numbers of blackfish showing up on the North Shore; however, no new entries have shown up in the contest. Also that old favorite the flounder is making his fall appearance in the bays.

NEW RECREATION BUILDING SCHEDULE

The Recreation Building, in the Apartment area will open Monday, Tuesday, Wednesday and Thursday evenings from 5:00 p.m. to 11:00 p.m. For information on activities or reservations call G. Sabine, Extension 391.

"The chief function of your body is to carry your brain around.

— Thomas Edison

THEATRE GROUP NOTES

The casting has been completed, according to Joe Jach, director, for Detective Story, the next play to be offered by the BNL Theatre Group.

PART	PLAYER
Joe Feinson.....	Jerome Sadofsky, Metallurgy
Detective Dakis.....	William Greenhill, Reactor
Shoplifter.....	Valerie Hughes, Personnel
Detective Gallagher.....	John Gibson, Physics
Mrs. Farragut.....	Patricia Towey, Physics
Detective Callahan.....	Geo. Hardman, Nuc. Eng.
Detective O'Brien.....	James R. Grover, Chemistry
Detective Brody.....	Fred Thompson, Arch. Plan.
Endicott Sims.....	G.J. Dienes, Physics
Detective McLeod.....	George Lowe, Physics
Arthur Kindred.....	George Graudy, Reactor
Patrolman Barnes.....	Gordon Danby, AGS
1st Burglar (Charlie).....	Carl Wilson, Reactor
2nd Burglar (Lewis).....	Carmen Spirio, Physics
Mrs. Bagatelle.....	Margaret Dienes, Inf. Div.
Dr. Kurt Schneider.....	Gerald Lellouche, Nuc. Eng.
Lieut. Monaghan.....	John J. Kelsch, Metallurgy
Susan Carmichael.....	Doris Seebode, AEC
Patrolman Keogh.....	Ron Horwath, Physics
Patrolman Baker.....	Carl Goodzeit, Physics
Willy.....	Cyril Woodburn, Reactor
Miss Hatch.....	Diane Eisler (Fred), Cosmotron
Mr. Feeney.....	Bill Vogelsang, Reactor
Mrs. Feeney.....	Barbara Garnier, Solid State
Crum-Bum.....	Open
Mr. Gallantz.....	Leonard Galanter, Nuc. Eng.
Mr. Pritchett.....	Clifford Swartz, Cosmotron
Mary McLeod.....	Janice Loehr, Malan Const.
Tami Giacoppetti.....	Aurelio Ascoli, Solid State
Photographer.....	Don David, Physics
Indignant Citizen.....	Marjorie Davis, Malan Const.

A "circle" reading of the full play will take place in the Main Lounge, Brookhaven Center, Thursday 8 p.m., September 29.

MICROMET SALE

Orders for Micromet accompanied by full payment are now being taken at the Personnel Office, 58 Brookhaven. No orders will be taken after Friday, October 14th.

WEEKLY SAFETY HINT



Ed Bailey, Safety Coordinator at the Physics Department, remarks: "The largest percentage of on-site traffic accidents involve a vehicle which is backing up. Be sure it's clear behind you before you start in reverse."

UPTON RIFLE AND PISTOL CLUB

The next monthly meeting will take place October 6th, at 8:00 p.m. Topic of discussion will deal with refunds of that portion of the annual dues which was intended to go towards an indoor range. All members are urged to attend this meeting.

The large bore rifle match started Sunday at the Medford Range featuring an array of heavy artillery that would make an army envious. Springfields, Garands and Enfields were at the top of the list along with a few half-breeds. Competition among the sharpshooters was keen and when the smoke cleared, the spread between highest and lowest man was no more than 10 points. Al Lukas led the way with a score of 175 out of a possible 200. Breathing down his neck were Pete Columbo with a 173 and Paul Colsmann with 171. All contestants left the range muttering 'Wait till next week'. The large bore meet is open to all members of the club. Free ammo and targets are supplied. For further information contact A. Lukas, Ext. 769.

CHESS ANSWER

BLACK	WHITE
1.	Q - B8 check
2. R - N1	N - N6 check
and mate next.	

CLASSIFIED ADS

FOR SALE

1960 FALCON STATION WAGON - green and white. 2 dr. Standard trans. Under 4,000 miles. Must sell, asking \$1875. Ext. 362 or ATLantic 9-1426.

1952 FORD - 4 dr. V-8. R&H. Good condition. \$175. Pixley, Ext. 2218.

1955 FORD - 2 dr. Good running condition. Standard shift. 6 cyl. \$395. C. Cantera, Ext. 2376.

1955 PLYMOUTH - 4 dr. 6 cyl. sedan. Good tires and engine. Dependable. \$400. R. Lea, Ext. 2336.

1949 DODGE - Good condition. Best offer over \$40. R. Dvorak, Ext. 618.

1956 BUICK CENTURY - A-1 condition. Fully equipped. New tires. Best offer. A. Debons, Ext. 301-26.

1951 CHEVROLET - Sedan delivery. Good running condition. Good tires, \$150. F. Flynn, Ext. 661 or ATLantic 1-8427.

HOUSE - 3 bedroom ranch. 80x100 landscaped corner plot. Extra 10x10 room for storage or expanded dining area. Near parochial school, North Bellport. \$8,500. ATLantic 6-9237 anytime.

WESTERN SADDLE - matching bridle, saddle blanket and hackamore. \$70. Ext. 363 or Yaphank 4-3035 after 6 p.m.

SPLIT LEVEL HOUSE - Beautiful 7 rm. on wooded 1/2 acre lot. Fireplace, large living room, 26 ft. recreation room, 3 bedrooms, 1 1/2 baths, laundry. Private beach. E. Rogers, Ext. 600 or SHoreham 4-9877 after 6 p.m.

23 FT. OWENS CABIN CRUISER - 1956, 96 h.p. New valve job, sleeps 3, head, galley, \$200 of access, including elec. w. wiper and bilge pump, extra prop., spotlight, compass, waterskiis, etc. Excellent cond. \$2150. Mapes, Ext. 427 or Yaphank 4-3118.

24 FT. CENTERBOARD SLOOP - Comfortable day sailer. Mahogany hull with cedar trim. Sitka pine mast. Two mains, jib and spinaker. Ext. 2294 or BELLport 7-1068.

G.M. FRIGIDAIRE REFRIGERATOR - 6.9 cu. ft. Excellent condition. Moving must sell, available Oct. 22. \$55. E. Jenkin, Ext. 328 or ATLantic 9-0919.

STERO HI-FI SYSTEM - Heath kit, RP - 3x. 4 speed changer, picking 371 cartridge, Heath kit SA-2 dual 14 watt amplifier (wired), 2 ea. US-3 12 inch co-axial speakers and all cables. System used for test purposes only. Selling because of too many hobbies. \$160. P. Buhl, Ext. 354.

WEBCOR HI-FI - 3-speed phonograph, table model. 3 speakers, G.E. cartridge with diamond needle. Blond Korina wood cabinet. \$55. E. Tonna, Ext. 301-33.

8MM MOVIE CAMERA - German make "AK8". Can also take single frames. \$20. J. Weiss, Ext. 2472.

SPAULDING GOLF CLUBS - three woods, four irons, bag, tees. Reasonable. Clarinet & case. Excellent condition. Mellow tone \$50. Trumpet. New condition, case. \$40. J. Kelsch, Ext. 354.

WOMAN'S STORM COAT - full length, hood, size 18. \$12. Also black-watch plaid polo coat, interlined \$25. ATLantic 6-8712.

FOR RENT

RANCH HOUSE - 5 rms. Fully furnished. Lake Panamoka - 6 min. drive to Lab. \$100 per mo. You pay utilities. Park 7-3350 after 5:30.

FOUR-ROOM HOUSE - Partly furnished, East Patchogue. \$60 per mo. Pixley, Ext. 2218.

FURNISHED BEDROOM - large, for single man. Share bath. Kitchen and living room with two other men. Private entrance. Patchogue. G.Rover 5-1371.

CAR POOLS

Two-man car pool desired from E. Patchogue (Bellport Beach Estate), Katakis, Ext. 628.

Would like to share driving to Brooklyn Poly on Friday nights. B. McRickard, Ext. 691.