

the Bulletin Board

VOLUME 14 - NUMBER 6

Published by the BNL Personnel Office

OCTOBER 11, 1960

FIRE PREVENTION WEEK

This year the week of October 9th to the 15th has been designated as "National Fire Prevention Week." It is appropriate at this time to reflect on the appalling loss of life due to fires. Deaths number in excess of 12,000 annually and many other individuals are painfully injured. Losses sustained by the destruction of homes, buildings, irreplaceable materials, etc., cannot be measured in dollar value only.

Despite the advances in fire resistive construction, the installation of interior fire protection devices, and the development of better fire apparatus, the annual fire losses increase. Items still remaining high on the list as fire hazards are the careless handling of flammable liquids, the accumulation of rubbish, overloaded house wiring, and frayed appliance cords.

Fire prevention should be a daily part of our lives. It is a highly cooperative endeavor and each of us should do our utmost to see that Fire Prevention Week is not forgotten the other fifty-one weeks of the year.

SECOND ANNUAL BROOKHAVEN ART EXHIBIT

COMING - NOV. 2 THROUGH NOV. 9

Sponsored by BERA

Participating this year:

JULIAN LEVY, painter

PERLE FINE, painter

CONSTANTINO NIVOLA, sculptor

well-known artists from the

EAST HAMPTON NEW YORK ART GROUP

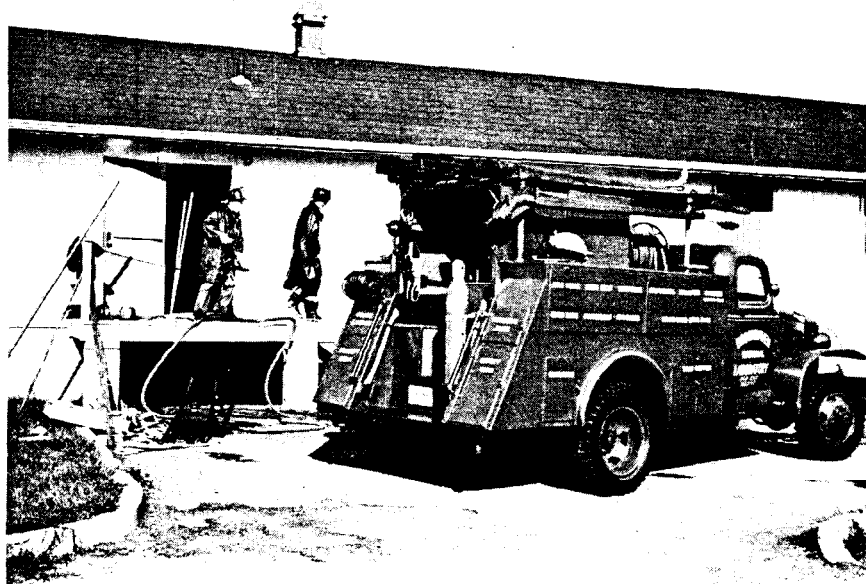
OPENING: Wednesday Eve., Nov. 2 at 8 p.m.

SMOKE RINGS

The controversy which continues over whether cigarette smoking contributes to the incidence of cancer is of vital importance to every smoker. However, while the argument rages, smoking and matches cause over 200,000 fires and 1200 deaths per year. (One of the most insidious ways in which these fires and deaths are caused is where someone falls asleep while smoking.)

All that is necessary for the forces of evil to win in the world is for enough good men to do nothing. — Edmund Burke

FIREFIGHTING



The Firefighters in action

Every week is Fire Prevention Week for BNL's Fire Department and its personnel. The firefighters are on an around-the-clock schedule to prevent fires and put them out promptly when they occur. In many ways the BNL Fire Department is similar to an up-to-date, well-equipped municipal fire department, but the varied work carried on at the Laboratory calls for different methods of fire prevention, detection, and extinguishment. The methods used depend on the location of the fire and the type of work being done in the area. Powdered graphite, for example, is used to control fires in metals when the use of water or other agents might create a greater hazard.

The Fire Department's equipment includes two modern pumping engines, a rescue vehicle, and a brush truck. The two large pumping engines can be connected to any of the 155 fire hydrants on site when necessary. These engines carry hoses of various sizes, ladders, a variety of fittings and nozzles, and auxiliary tanks for use when there are no hydrants near the fire.

The rescue vehicle carries typical rescue equipment, such as respiratory equipment, masks, resuscitators, stretchers, and portable oxygen-acetylene cutting equipment. Geiger counters, an explosimeter (to detect leaks of flammable gases), asbestos blankets, and a foam hopper to put out flammable liquid fires are other available equipment. The rescue vehicle also carries detailed Health Physics data about various buildings on site.

With the sounding of any fire alarm, a pumper and the rescue vehicle both respond to the area of potential danger. This enables the Fire Department to respond quickly to any fire. (Please turn to Page 2)

FIREFIGHTING—Cont'd

ment personnel to arrive at the scene with an adequate amount of equipment to meet any emergency.

Early detection of a fire or a potentially dangerous situation is very important in minimizing destruction. Because of this fact many of the preventative duties of the Fire Department are unknown to the average employee. For example, building inspectors check the 224 structures on site on a regular schedule. During non-working hours, there are areas that receive an hourly inspection, such as the hospital area and the apartment area. Each fire hydrant is checked and tested monthly. There are over 1200 fire extinguishers of various types on site to be examined, and daily inspection and tests of the fire alarm system are made. The BNL firefighters spend two hours of each day in training. During this period, problems of various sorts dealing with fires and explosion dangers are simulated. In addition, the Fire Department is often called upon to stand by when a potentially dangerous operation is carried out. This is known as a fireguard detail. Welding and cutting operations performed by outside contractors often require this type of assistance.

During fiscal year 1960 the Fire Department responded to 108 alarms both on and off site. In addition there were many fires that were investigated as to cause and possible ways to prevent combustion in the future. There were 5 off-site alarms in which BNL equipment responded. The BNL Fire Department has mutual aid agreements with the surrounding communities of Ridge, Yaphank, Mastic, Center Moriches, Manorville, and Riverhead.

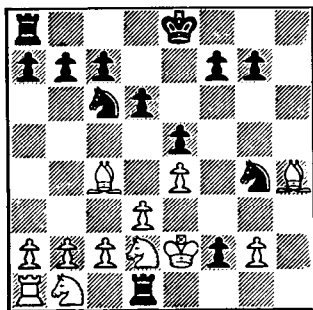
The aims of our Fire Department are to prevent fires from starting, and if they do start, to detect them early and put them out quickly and efficiently.

TWO TO TANGO

True enough! However, it takes a few more to get 400 dancing. That's why we need you to help organize the next B.E.R.A. Dance. Plans are to have the affair in early November. Don't be bashful, no experience is needed - enthusiasm will do. Join the committee by calling G. Sabine, Ext. 391, Recreation Office.

CHESS PROBLEM

In this weeks problem it is blacks move. Answer elsewhere in this weeks BULLETIN BOARD.



Black to move

PICK UP DU BRIDGE BOOKS

There are still some people who have not yet picked up their DuBridge Books at Personnel Services, 58 Brookhaven Avenue. Please do so as soon as possible.

WEEKLY SAFETY HINT

Walter Schmelz, BNL Fire Chief, states:- "If fire breaks out, don't delay in calling the Fire Department! Use the nearest manual fire alarm box, or if none available, telephone Extension 313. This must be done **FIRST!**"

BNL SAFETY RECORD

11 DISABLING INJURIES at BNL thus far in 1960 (for a rate of 2.94 injuries per 1,000,000 manhours - compared to the All AEC Research Contractor rate of 1.58).

FIRE ON-SITE!**WOULD YOU KNOW WHAT TO DO?**

If you were first on the scene of a fire here at work would you know what to do? Naturally, all fires are different, but there are some basic rules which can be followed:

FIRST! - NOTIFY THE FIRE DEPARTMENT. A manual fire alarm box is preferred - if none is nearby, use the phone but be precise about the location. If possible, have someone stand by to direct the firefighters. (Do you know the extension to call?)

NEXT - If there is no immediate life hazard, and if you think you can control the fire, use the **correct** fire extinguisher. If you're not sure of the right kind or how to use it, leave it for someone who does.

ALWAYS - If there is danger to life, be sure everyone gets out.

FIRE AT HOME!**WOULD YOU KNOW WHAT TO DO?**

Would you know what to do if fire broke out in your home? Pre-planning for home fires cannot be overstressed - every member of the family (and this includes baby sitters) should automatically know what to do. Basic rules for home fires are:

FIRST! - GET EVERYONE OUT OF THE HOUSE. You should be able to do this automatically if you have previously organized an escape plan and practiced the procedure to follow. (Further information on escape plans is available from the BNL Safety Office.)

NEXT - Call the Fire Department from your neighbor's house. (This of course, assumes there is a neighbor with a phone within reasonable distance.)

SOMETIMES - If the fire is small and you can put it out with water, smothering or whatever, do so. Always be sure you are between the fire and an exit, and if the fire starts to get out of control, use the exit - quick!

PROPERTY MANAGEMENT

On September 1st, 1960 the Director's Office approved a credit plan in connection with the Capital Equipment Pool, Building 87. Did you know that you could turn in usable capital equipment which is excess to your needs for credit against your capital equipment budget? For information concerning this plan, telephone Property Management, Ext. 347 or 470.

! DON'T FORGET !

Square Dance - - - October 18, 1960

FREE SWIM SPOTLIGHTS OPENING

That's right! The first night of our pool reopening will feature free admission to our employees and family members. We want you to come out, and see what you've been missing. The winter season will extend from October to mid-June and will begin on Tuesday the 18th at 7:00 p.m. As of Wednesday, the 19th the following schedule of rates and hours will be in effect.

TUESDAY, WEDNESDAY, AND FRIDAY
7:00 - 10:00 P.M.

THURSDAY
5:00 - 10:00 P.M.

DAILY ADMISSION

Employee or Family Member..... 35¢
Guest of employee..... 60¢

SEASON TICKETS (OCT. - JUNE)

Employee.....\$ 5.00
Family.....\$10.00
Children under 6 yrs. FREE.

For further information, call George Sabine, Ext. 391, Recreation Office.

UPTON RIFLE & PISTOL CLUB

The third meeting of the large bore group took place Sunday with Judd "Precision" Diener setting the pace with a score of 182 out of 200. Rumors say that the secret of Judd's success is firing 100 rounds for zeroing in. "Persistent" Paul Colsmann followed closely with a 180 and Pete Colombo limped in with a 176. After being handed a shovel to fill in the holes, Frank German has some doubts about using armor piercing again, even though it does improve his score.

HIGH HOOK

When it comes to catching the big ones, Nick Sowiak, Grounds Maintenance, leads the list with three top entries, a 27 lb., 12 oz. striper, a 7 lb. 8 oz. bluefish, and a 24 lb. 7 oz. cod.

Reports of battling bass are coming from both the North and South shores. Flounders are beginning to show in good catches, and also a few weakfish in the surf.

A few more weeks remain before the contest closes, so, put in a few extra fishing trips and try to top the entries.

CHESS ANSWER

WHITE BLACK

1. N - Q5 check
2. K X R N - K6 check and mate next

NEXT SQUARE DANCE OCTOBER 18

Now's your chance to shake those doldrums and get in the spirit of things by attending this season's first Square Dance. We know you'll have a ball dancing to the calls and strains of "The Fearsome Foursome." The fun begins at 8:30 on October 18th, Tuesday, at the Recreation Building (York Lane - Apt. Area). Because of the volunteer services of the musicians, there is NO admission charge. However, if you must spend your money, we'll have ice cold beer and soda to give you that extra added energy. If you haven't tried docey . . . doing it before, give it a whirl next Tuesday evening.

**BERA BOWLING****GREEN LEAGUE**

With 8 teams starting Monday night, it appears to be a strong competitive league. The Mole-Stars took last year's champs (Fire Dept.) 4-0. The Reefers squeezed in with a 3-1 win over the Old Timers III. Black Birds over the Electrons 3-1 and the Old Timers I beat their cousins Old Timers II 3-1. High games by J. Gilmartin 205, 190; Adams 187; G. Hardman 180; and J. Lucas 203.

LADY KEGLERS LEAGUE

The Ladies League was off to a flying start Wednesday night, lacking in neither noise, skill, or good natured competition. There are lots of new faces and teams in the league this year, and we'd like to extend our welcome to the new girls, and wish everyone good luck in the coming season.

The APC's came through with a complete victory over the Boo Boo's, as did the Medigals over the Nightingales. The Alley Kats took 2½ points from their opponents the Allthumbs (3rd game was tied). Last year's All-League Champions, the Odds and Ends got off to a poor start, losing three points to the superior bowling of the Twinkle Toes. This was due in part to the outstanding exhibition of one Pat Towey, who promises to be one of our more prominent trick shot artists. Need we say more? Grace Shiro converted the only split shot of the night when she made the 5-7. High games for the night were: Regina Svendsen 164,

Chris Podlaski 161, and Barbara Garnier 160.

PURPLE LEAGUE

The Designers, with Capt. Ed. Sperry leading the way with a, 203-542, took 4 points from the Bowl Aids.

The Hopefulls, a team of new recruits with high hopes, took four points away from the Phoubars.

The Dirty Birds with T. Grisoli's 192 squeaked out 3 points from the Fiscal Boys. R. Brower with a 498 and H. Bohn 508 couldn't keep the birds down.

The Woodbutchers, with all their hammering could not hold down the Scotches. P. Reany's 191-211-512 sawed 3 points out of them.

RED LEAGUE

Well, here we are again, same old time, same old place (P.B.C.). The league got off to a good start with Biology rolling against the Bismuth Kings. Biology's two top men were E. Schwinghamer with a 417 series and F. Belohlovek with a 433. With this, Biology took three points from the Bismuth Kings. The help on the Bismuth Kings came from B. Watson, 482 and J. Vereeia, 480.

The Skins really skinned the Gnats by taking three points from them. The pushers for the Skins were L. Potter with a 516 and L. Lento with a 457. The only Gnat that got away with his skin was C. Backsmith with a 441.

The Bugs really got on to the Downunders and took three points from them. The Bugs only had seven men on the team; their backbone was H. Shipley with a 490. The men on the Downunders who did not go under completely were M. Iarocci with a 450 and H. Beiselin with a 445.

Square Dance - - - October 18, 1960

CLASSIFIED ADS

FOR SALE

1956 LINCOLN - premier convertible. Excellent condition. \$1500. Ext. 664.

1958 FORD STATION WAGON - Country sedan. Radio, heater, power steering and brakes, auto. trans. V8. 24,000 miles. Ext. 2133 or JUniper 1-4040 after 6 p.m.

1952 STUDEBAKER COMMANDER - good condition, \$175. T. Honnett, Ext. 577 or Atlantic 6-8945.

1956 MERCURY - 2 dr. sedan. Clean. Atlantic 9 0259 after 6 p.m.

1951 CHEVROLET - 4 dr. sedan. R&H, two new tires and battery. Outstanding over-all condition. Available Nov. 1. W. Oosterheert, Ext. 727.

1949 BUICK - 4 dr. sedan. R&H. Clean. \$75 or best offer. Atlantic 1-8253 or Ext. 635.

1954 FORD - Columbus Day Special, \$225. 6 cyl. 4 dr. sedan. Green and white. Good running condition. Just had valve job and new carburetor. R&H. New points. B. Walsh, Ext. 481.

1952 HILLMAN - 4 dr. sedan in good condition. Dependable second car. Recent work done. 32 m/g. \$210. J. Walsh, Ext. 454.

1953 STUDEBAKER - 5 pass. sport coupe, V8. Auto. trans. \$375. R&H. Original owner. 58,000 mi. F. Horn, Ext. 2383 or SAyville 4-2759.

1953 CADILLAC - fully equipped. Push button windows. White walls. \$500. Ext. 2453 or Atlantic 6-9112 after 6 p.m.

1957 CHRYSLER HARD TOP - full power. Best offer over \$1000. Call Atlantic 9-0632 after 6 p.m.

1955 PLYMOUTH - 4 dr. 6 cyl. sedan. Good tires and engine. Dependable. \$400. R. Lea, Ext. 2336.

1958 LAMBRETTA 150LDM motor scooter, \$200. C. Baltay, Ext. 2407.

SPLIT LEVEL HOUSE - Beautiful 7 rm. on wooded ½ acre lot. Fireplace, large living room, 26 ft. recreation room, 3 bedrooms, 1½ baths, laundry. Private beach. E. Rogers, Ext. 600 or Shoreham 4-9635 after 6 p.m.

CUSTOM BUILT RANCH - 3 bedrooms, attached garage. Located in Patchogue Village on 100x110 plot. \$14,500. Also 100x110 wooded lot in Village. \$1,500. G.Rover 5-1969 after 6 p.m.

HOUSE - quiet residential area on landscaped plot 75x168. Large shade trees. 3 bedrooms, sunporch, tiled bath, oil heat,

combination windows and doors. Near school and village. \$9000. C.Enter Moriches. Atlantic 4-1014 anytime.

LYMAN "ISLANDER" BOAT - 65 hp gray marine inboard. Navy top. Compass. Ext. 2133 or JUniper 1-4040 after 6 p.m.

TRICYCLE - 16 inch chain driven. \$10. S. Garrett, Ext. 2123.

GIRL'S BICYCLE - Schwinn, full size. \$20. R. Vogt, Ext. 2107.

1953 JOHNSON OUTBOARD MOTOR - 25 hp. 6 gallon gas tank. Good condition. \$130. J. Hallock, Ext. 2480.

THOMPSON 35 EVINRUDE ELECTRIC - 17 ft. Covers, extras, Gator trailer. All 1958. G. Lekay, Yaphank 4-6790.

FALL SPECIAL MOWER - Reo power, 18 in. Reel type. Needs some work. \$15. M. Greene, Ext. 779 or Bellport 7-0237.

DINING ROOM SET - 5 piece. Gray wood, grained top, curved back chairs, leaf. No mar taper tubular black legs with sterling silver guides. Deluxe quality. Orig. cost \$189. Asking \$75. One yr. old. G.Rover 5-4199.

KITCHEN GAS RANGE - white. \$15. Living room chairs (2), excellent cond. Atlantic 6-8476 after 5:30 p.m.

KENMORE AUTO. WASHING MACHINE - 2½ yrs. old. Controls water level, temp. wash time. Perfect condition. \$80. Jake, Ext. 2208.

G.M. FRIGIDARE REFRIGERATOR - 12 yrs. old and in excellent condition. \$50. E. Jenkins, AT 9-0919.

"CRAFTSMAN" MITRE BOX - for standard or stiff back saw. Wood base, metal fence and guides. Accurate protractor and lock. \$6. Call Ext. 2236.

COATS - szs. 11-15, Fur, pink tan, rose corduroy, brown checked, gray poodle shorty. Fancy dresses, szs. 9-13. Gowns, Floor length. Green velvet, shrimp chiffon, pink crystal-lette. All like new and reasonable. AT 9-1754.

HORSE - blue and white, mare. Very gentle with children. K. Hickey, AT 4-0811 after 6 p.m.

LIONEL TRAINS, Steam Locomotive, Tender, Tank Car, Flat Car, Box Car, Cannister Car, Gondola, Caboose, 1 pair Remote Control 027 non-derailing switches, Transformer, approx. 25 ft. of 027 Track mounted on 4'X8' board, Tunnel, Station, Misc. Bldgs. Ext. 2119.

SHOTGUN - J.C. Higgins 12 ga. mod. pump. Recoil pad and canvas cover. Excel. cond. Very good duck gun. \$40. Call AT 9-0654.

ADVICE - Skiers! NOW is the time to start exercising and saving money too!

FOR RENT

FOUR-ROOM HOUSE - partly furnished. East Patchogue. \$60/mo. Pixley, Ext. 2218.

COZY BUNGALOW - in Mount Sinai. 15 min. from Lab. 5 min. to beach. Two bedrooms living room, modern kitchen and bath. Full basement and attic, economical oil hot air heat. Very reasonable rent. Available about November 1. B. Monaghan, Ext. 2407 or PO 8-2918-J.

RANCH HOUSE - 5 rms. fully furnished. Lake Panamoka, 6 min. drive to Lab. \$100/mo. you pay utilities. PA 7-3350 after 5:30.

FURNISHED APARTMENT - 3 room. Located 5 mi. from Lab. E. Yellin, Ext. 779.

CAR POOLS

One or two riders wanted for car pool from Islip-East Islip area. S. Kalish, Ext. 2338.

Ride wanted from Patchogue, vicinity S. Ocean Avenue. 8:30 - 5:00. W. Creller, Ext. 301-38.

Would like ride to and from Ronkonkoma (near bank). C. Baltay, Ext. 2407.

LOST

MAN'S LIGHT BROWN LONDON FOG RAINCOAT - If found, please call Ext. 460.

WANTED

Anyone interested in joining a record playing group, please get in touch with Steve Yamamoto, Ext. 474. We also welcome pianists and singers (madrigals).

First or second floor apartment within short walking of Bellport village. BE 7-1214-W.

Child's stroller and folding gate. V. Myers, Ext. 538.

BNL Chess Club members. Meeting every Thursday night 7:30 p.m. at the Recreation Building. Everyone welcome.

Clarinet - call Nicolosi, Ext. 471.

To borrow one chess clock for play-off of BNL Chess Tournament. Call Ext. 565.

To rent or buy a cement mixer. G. Nugent, Ext. 2239.

FOUND

Blank U.S. Postal Money Order. Contact the bank.