

the Bulletin Board

VOLUME 14 - NUMBER 19

Published by the BNL Personnel Office

JANUARY 10, 1961

Fringe Patter

NON-TAXABLE SICK LEAVE

The Internal Revenue Code of 1954 provides that payments made to employees for sick leave under the Laboratory sick leave policy may under certain circumstances be excluded from gross income for Federal income tax and Social Security purposes. Payments received under the following circumstances may be excluded:

1. If absence from work is caused by SICKNESS extending beyond seven consecutive calendar days, sick leave payments up to a weekly rate of \$100 attributable to the eighth and all consecutive days of absence thereafter may be excluded from gross income.

2. If absence from work is caused by SICKNESS, and the employee is HOSPITALIZED for one or more days during that absence, sick leave payments up to a weekly rate of \$100 attributable to the first day of absence thereafter may be excluded from gross income.

3. If absence from work is caused by PERSONAL INJURY (either occupational or non-occupational), sick leave payments up to a weekly rate of \$100 attributable to the first day of absence and all consecutive days of absence thereafter may be excluded from gross income.

Any employee who has sick leave payments during 1961 which fall in one or more of the above three categories should fill out Form No. 989-A, obtained through your Department, IMMEDIATELY AFTER THE ILLNESS and return the form to the Payroll Section. It is important to note that Form 989-A SHOULD BE COMPLETED UPON THE EMPLOYEE'S RETURN TO WORK so the information can be reported on the W-2 form next year. If you fail to report non-taxable sick leave at the time it occurs, it will be assumed that the sick leave payments are taxable.

If an employee elects to use vacation leave to provide wages while absent because of illness or injury, vacation pay may be considered in computing the amount of sick pay exclusion.

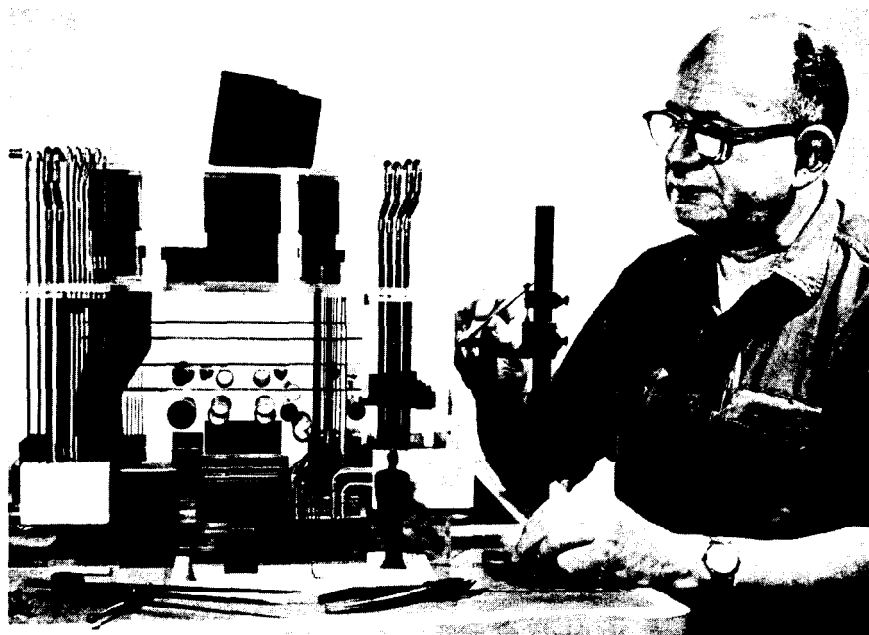
ALIEN ADDRESS REGISTRATION

Every alien must report his address during January of each year to the Commissioner, Immigration and Naturalization Service. Alien address report cards are available at the Upton U.S. Post Office, 2 Center Street.

MODEL SHOP

If you have entered the Pile or Cosmotron lobbies you have undoubtedly seen the detailed scaled models on display. These are the most complicated of the many models that have been built in the BNL Model Shop, which is part of the Cabinet Shop located at the corner of Brookhaven and Upton Roads.

All of the models that are constructed by the shop are built directly from construction drawings. They are scaled down to either $\frac{3}{4}$ in. to a foot or $\frac{3}{8}$ in. to a foot and are accurate to within $\frac{1}{16}$ in. A wide variety of materials is used in the fabrication of these models in order to attain the desired appearance. Among materials commonly used are wood, plastics, metal, copper tubing and wire. Such components as motor generators, compressors, vacuum pumps, and many other pieces must be hand made to scale. After the model is completed, it is sent to the Finishing Shop where it receives its finish coat to resemble concrete, steel, sand or other materials which will be used in the facility.



The accompanying photograph shows the High Intensity Radiation Development Laboratory model, which is now under construction. Ground was broken for this project in November, 1960 (BULLETIN BOARD, November 29), and the model will serve as a useful reference throughout construction of the project. As an example of the detailed work which goes into each model, there are approximately 1600 parts in the 3 by 7 foot model, ranging from tiny laboratory benches to a miniature underground decontamination canal and a railroad track (which will be used to bring samples into the Laboratory).

The models are extremely useful, both before and after the construction of a building or project. Models that are built before actual construction enable engineers and architects to see physically what they have put on paper. Most facilities of which models are made are extremely complex, and it is helpful to be able to see, in three dimensions, how all of the various compo-

(Please turn to Page 2)

MODEL SHOP - continued

nents, such as electrical wiring, water supply, and air conditioning equipment, will fit together in the finished project. If any problems are spotted, they can be corrected before the actual construction begins.

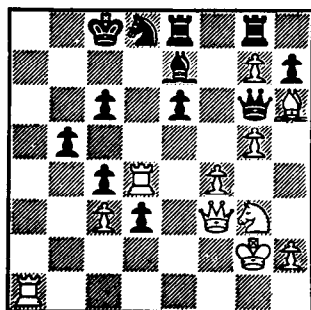
Once construction has been completed, the models give visitors a quick, complete picture of the facility, and in most cases, a much clearer one than could be obtained in any other way.

1 9 6 1

Upside down, or right side to,
It looks the same to me and you.

When will this happen again? When
did it last occur?

The first person with the right answers
to call Ext. 396 will receive a prize of a
year's free subscription to THE BULLETIN
BOARD.

CHESS PROBLEM

This week's problem was an actual
game played between Marshall and
Tarrash back in 1910. It is white's move
and win. Answer elsewhere in this
week's BULLETIN BOARD.

BNL SAFETY RECORD

There have been no disabling injuries
at BNL thus far in 1961.

LABORATORY STORM CLOSINGS

The following radio stations will carry
announcements concerning Laboratory
closings and openings when storm
or other emergency conditions exist.

WPAC	Patchogue	1580
WRIV	Riverhead	1390
WHLI	Hempstead	1100
WALK	Patchogue	1370
WGSM	Huntington	740

MOVIE SERIES TICKETS

Series tickets are available for em-
ployees at \$4.00 from F. Rizzo (Nuclear
Engineering), Robert Nathans (Physics),
Noel Corngold (Chemistry) and the Rec-
reation Office in the Gymnasium. Single
admissions 90¢, high school students
50¢.

BNL THEATRE TO LIGHT UP

JANUARY 26, 27, and 28

An off-Broadway production of Sid-
ney Kingsley's gripping three act drama
THE DETECTIVE STORY will be presented
by a stellar cast of BNL talent. This is the
largest cast of players to appear in one
play since YOU CAN'T TAKE IT WITH YOU,
many years ago.

This is the kind of play that is worth
seeing more than once. It is contempo-
rary, and offers to the audience a be-
hind-the-scenes glimpse into the workings
of a New York City detective bureau.
The motivations which mold the char-
acters of the detectives are cleverly dis-
played by Mr. Kingsley, who knows his
theatre and his detectives.

This play has many dramatic ele-
ments - humorous incidents, admirable
characters and pathetic ones, a dyed-in-
the-wool louse, stark drama, and trage-
dy - all served up in a remarkably be-
lievable presentation of the events
which take place on a late August after-
noon and evening in a detective pre-
cinct station.

There will be a double tragedy if our
BNL public forgets to buy tickets and
attend this event. In line with a policy of
years' standing, tickets will be just one
dollar each for adults and/or children.
Because of the large size of this produc-
tion, it will require a large attendance
at the play to enable the Theatre
Group to maintain this policy. Box office
receipts go to BERA, which underwrites
all Theatre Group activities.

Tickets will be on sale next week and
may be purchased from all members of
the cast and from others - names will be
announced in next week's BULLETIN
BOARD. Non-employees may attend by
securing tickets from employees. Rela-
tives and friends of Laboratory person-
nel are invited to enjoy this event. Tick-
ets will be good for any seat, any night
(January 26, 27, and 28).

We all have weaknesses. But I have figured
that others have put up with mine so tolera-
bly that I would be much less than fair not
to make a reasonable discount for theirs.

—William Allen White

BNL RESERVE UNIT COMMENDED

The Commandant of the Third Naval
District has commended Naval Reserve
Research Company 3-9, which meets on
site, for the mark of Excellent attained
in its annual inspection. The overall
grade of 96.58 assigned to the group is
the highest mark received by any Non-
Pay Company so far this fiscal year, and
is higher than any mark received by any
Non-Pay Company in the Third Naval
District last fiscal year. There are sev-
eral hundred Non-Pay Companies in the
District.

THIRD BROOKHAVEN LECTURE

By Dr. Werner Hirs, BNL Biology
Department.

Title: Inside the Protein Molecule.

Lecture Hall: 8:00 p.m., Wednesday,
January 11.

A buffet supper (\$2.75) will be served
at the Brookhaven Center before the
lecture, beginning at 6:00 p.m. Reserva-
tions should be made at least one day
in advance, by calling Ext. 2302 before
5 p.m., or Ext. 2453 in the evenings.

Refreshments will be available in the
Research Staff Lounge following the
lecture.

BIG FIVE WINS HALF

In the BNL Basketball League, which
plays its season in two halves, the Big
Five cinched a playoff spot as it ran off
its sixth victory without a loss. The win-
ning score was totaled against the Old
Timers, 44-25.

TEAM STANDINGS

TEAM	WON	LOST
1. Big Five	6	0
2. Odd Balls	4	2
3. Metallurgy	3	3
4. Old Timers	3	3
5. Biology	2	4
6. Health Physics	0	6

Games every Tuesday at 6:15, 7:25,
and 8:35 p.m.

BNL DOWNS RIVERHEAD

The Upton Rifle and Pistol Club piled
up 1009 points to down Riverhead at a
pistol match at the Riverhead Armory
on Thursday, January 5. Four highest
scores were: P. Colsmann - 255; M.
Johnson - 252; J. Kopp - 252; C. McClel-
land - 250.

PERSONNEL RECORDS

TO ALL EMPLOYEES: Be sure to report
any changes in home address or tele-
phone number to Personnel Records.



BERA BOWLING

PURPLE LEAGUE

The Designers, by taking 4 points from the Scotchies, moved into first place. For the Designers it was Capt. Ed Sperry 225-550, J. Roeklein 214-550, A. Texiera 199-540. The Scotchies had R. Reamy with 185-517.

The Fiscal team banded together to take 3 points from the Woodbutchers and took over 2nd place. Leading the way was R. Brouwer 191-514, R. Eberbach 185-483, and H. Bohn 180-490. The best for the Woodbutchers was W. Milian's 194-540.

The Dirty Birds swarmed all over the Phoubars for 3 points. The high-flying Birds were G. Kuzmack 203-502, and A. Dick 174. The Phoubars' best were B. Brown 201 and D. Vogt 170-481.

The Bowl Aids and the Hopefuls battled to a tie, the Hopefuls getting their 2 points by 4 pins. Steady bowling for the Hopefuls by J. Booker 125-369, A. Hanson 142-361, C. Zavesky 161-416. The best for the Bowl Aids were V. Celentano 132-389, E. Walsh 146, and D. Schulz 160-462.

TEAM STANDINGS	WON	LOST
1. Designers	32	16
2. Fiscal	30½	17½
3. Scotchies	29½	18½
4. Woodbutchers	27	21
5. Phoubars	20	28
6. Bowl Aids	19	29
7. Hopefuls	17	31
8. Dirty Birds	17	31

BLUE LEAGUE

The Techs took 4 from the Powermites finishing off with a big 250 game by Ganga-mella. Larsen's 192-559 series and Hildenbrand's 181-504 drove the final nails. The Powermites bowling with only 4 men had their power shut off.

The Splitters (4 man team) held second place although losing 3 points to the Pacers. The one point taken by the Splits was by the narrow margin of 2 pins. Spira bowled a 186 for the losers. For the Pacers, Jackson had a big night bowling a 199-561 series. Dexter had a 182 and Rutan's 176 was the last straw (89 pins over his average).

The Nuclides took 3 from the Bubble Boys in a close contest. One game was won by 2 pins - total wood by 16 pins. For the Nuclides Kukacka threw a 180-507 series and Milau a 179 game. Scheliga was top man of the match with a 181-515 series, bowling for the losers.

The Meteors were entangled by a 4 man monster (actually a three man monster in the first game) known as the Snafus. The Snafus moved to one point ahead of the Meteors behind a 196, 189-556 series by Newman and a 184 game by Klotz. The 4 point losers made a valiant attempt with Marr's 189 game and Walsh's 218-506 series.

Blue Ball of the Week to Len Newman of the Snafus with a gross series (incl. handicap) of 625.

RED LEAGUE

It looks like the Downunders were still in that New Year's spirit for they gave 4 points to the Gnats. The only Downunder that had both eyes open was Iarocci and he rolled a 504. The new captain of the Gnats seems to have the right idea for he led his team on to victory with a 511. He was supported by Wilson 502 and Backsmith 459.

The Skins and Bugs rolled it off; the Skins took 3 points from the Bugs. It seems that the two-week rest helped the Skins for Weinmann rolled a 542 and Bugala rolled a 506. The two-week layover was too much for the Bugs though for Iarocci was the only one to score a good series - 570 and a free haircut.

Well, last place in the League and last place in the write-up are the Bismuth Kings (?) who presented Biology with a nice New Year's present of 3 points. The present was accepted by J. Ruscica with his famous slow-ball - 459 and McGovern (who said he drank pure Coca Cola) who rolled a 493. The only Bismuth King who didn't give in was Taylor with a 452.

GYM SCHEDULE

The re-finishing of the gym floor has been completed and the following schedule will be resumed this week:

MONDAY: 5:00 - 7:00 p.m. Tennis (by reservation).

TUESDAY: 5:00 - 6:00 p.m., General Activity; 6:00 - 10:00 p.m., BNL Basketball League. 3 department games, 6:15, 7:25 and 8:25 p.m.

WEDNESDAY: 5:00 - 7:00 p.m., Tennis (by reservation); 7:00 - 10:00 p.m. Open for general activity, badminton, volleyball, table tennis, basketball, exercising, etc.

THURSDAY: 5:00 - 7:00 p.m., BNL Volleyball League. Badminton, Table tennis. 7:00 - 10:00 p.m., Open for general activity, badminton, table tennis, basketball, volleyball, exercising.

FRIDAY: 5:00 - 7:00 p.m., Tennis (by reservation).

ROVER HOCKEY TICKET SALE

Here's your chance to get rid of that excess energy - a chance to cheer on the local favorites and save money at the same time. Bargain priced tickets, regularly \$2.50, are yours for only \$1.40 at the Recreation Office in the Gymnasium.

The game should provide an extra measure of excitement as evidenced by the recent sports headlines compiled after the last meeting of the New York Rovers and the New Haven team.

Tickets are now on sale for the New Haven game to be played on Sunday afternoon at 3:00 p.m. on January 22. Tickets will be sold while the supply lasts, but no later than Thursday, January 19.

GRETE SULTAN, PIANIST

The third BERA Concert will be held on Wednesday evening, January 18, at 8:30 p.m. in the Research Staff Lounge. The featured artist will be Grete Sultan, pianist.



Miss Sultan studied with the late Edwin Fischer and has won great success in recent years in both Europe and the United States. She specializes in Bach, Beethoven, and Schubert, works by whom will make up her program.

Single admissions at \$2.50 will be sold at the concert.

SKI CLUB

There will be a Ski Club meeting on Monday, January 16, at 8 p.m. at the Recreation Building in the Apartment Area. Non-members who are interested in skiing are welcome. Further plans for the February trip will be discussed, and details arranged. A ski film will be shown after the meeting. For further information, call Ginger Moore, Ext. 301-40 or John Walsh, Ext. 454.

PERSONNEL SERVICES

The following items may be purchased at Personnel Services, 85 Brookhaven Avenue, at the present time:

FILM (ALSO FILM PROCESSING)
RADIO AND TV TUBES
COFFEE

Any profit derived from the above sales is given to BERA.

**WATCH FOR
BERA DANCE**

RENTAL LIBRARY

Among the books currently available at the Rental Library in the Personnel Office are:

Douglas Angus: THE IVY TRAP
 Louis Auchincloss: THE HOUSE OF FIVE TALENTS
 Shirley Barker: SWEAR BY APOLLO
 Anita R. Block: NECESSARY END
 Robert Crichton: THE GREAT IMPOSTER
 Jack Dillon: OUR KIND OF PEOPLE
 William Faulkner: THE MANSION
 Ernest Frankel: BAND OF BROTHERS
 Richard Frede: THE INTERNS
 William M. Geoney: MOMENT OF TRUTH
 Shirley Jackson: THE HAUNTING OF HILL HOUSE
 Storm Jameson: ONE ULYSSES TOO MANY
 Joseph Kessel: THE LION
 Ruth Moore: THE WALK DOWN MAIN STREET
 Agnar Mykle: LASSO ROUND THE MOON
 Boris Pasternak: I REMEMBER
 Christiane Rochefort: WARRIOR'S REST
 Leo Rosten: THE RETURN OF HYMAN KAPLAN
 Lawrence Schoonover: THE REVOLUTIONARY
 Nevil Shute: TRUSTEE FROM THE TOOLROOM
 Pierre Sichel: THE SABBUCKET GENIUS
 Eugene Vale: THE THIRTEENTH APOSTLE
 Jerome Weidman: BEFORE YOU GO
 Keith Wheeler: PEACEABLE LANE
 Robert Wilder: THE SUN IS MY SHADOW
 John R. Wilson: MEANS TO AN END
 Herman Wouk: THIS IS MY GOD

DISCOUNT TICKETS AVAILABLE AT PERSONNEL OFFICE

At the present time the discount tickets are available at the Personnel Office, 58 Brookhaven Avenue, for the following shows and games:

EPITAPH FOR GEORGE DILLON, Actors' Playhouse (Sheridan Square); THE 49TH COUSIN, Ambassador Theatre; ICE FOLLIES OF 1961, Madison Square Garden; NEW YORK RANGERS, Madison Square Garden; NEW YORK KNICKERBOCKERS, Madison Square Garden and PEPE, Criterion Theatre.

ANSWER TO CHESS PROBLEM

White wins with

WHITE

1. R x N check
2. Q x P and mate next.

BLACK

K x R

CLASSIFIED ADS

BULLETIN BOARD CLASSIFIED AD POLICY

1. Employees only may place ads in THE BULLETIN BOARD.
2. All items advertised for sale must be the property of an employee.
3. Real estate ads will be accepted only when they involve change of residence by an employee.
4. No ads for business purposes will be accepted.
5. Ads must be submitted in writing (preferably typed) by 3 p.m. Friday for inclusion in the next week's newspaper. Address the ads to THE BULLETIN BOARD, 58 Brookhaven Avenue, or deliver them to the Personnel Office. Ads must contain a signature and Laboratory telephone extension. If you do not want your name to appear when the ad is printed, put it in parentheses.
6. Ads are run on an available space basis. If your ad does not appear due to lack of space, it will be held for inclusion in the next issue of THE BULLETIN BOARD.
7. If you wish to repeat an ad, you must resubmit it.

FOR SALE

1956 CHEVOLET - Two door sedan, six cyl., standard shift, very good cond. \$650. Call Ext. 421.

HOUSE - 8 mi. from Lab. Mastic, 6 rms, hot water heat. Full basement (partly finished). 80X100 ft. Anchor-Fence enclosed plot. AT 1-8532 anytime.

HOUSE - Five room, Village of Bellport, new heating system, garage, 75x175 plot. Owner leaving Lab. Call AT 6-8299 after six.

HOUSE - Yaphank, on landscaped wooded lot, 125x200. Two bedrooms, modern kitchen, dishwasher, full cellar with finished room. Five years old, \$10,800. Morris, Ext. 474 or SH 4-5096.

WEBCOR TURNTABLE - Automatic, with base, Stereo cartridge and diamond needle. \$15. Tony, Ext. 2308. ALSO: 1955 International - 1/2 Ton Pickup, r&h. Like new. Must see to appreciate. \$595. Central Islip 4-6985. Call after 6.

MOBILE HOME - 33 ft., complete with stove, refrigerator, etc. Ron, Ext. 2473.

SOFA-BED - and two chairs with covers. \$75. AT 4-6310.

ROW-BOAT - 14 ft. cedar row boat in good condition. Call AT 1-8253 or Ext. 635.

HEATHKIT IGNITION ANALYZER MODEL 1A-1 - Completely wired, very good cond. Will sell for kit price. \$65. Call R. Perry, Ext. 2212.

SKINDIVING EQUIPMENT - Divair regulator and hour tank. New wet suit jacket, flippers, mask, belt with weights, depth meter, \$100. Also ping pong table 5x9 ft. folding type. Fully equipped, \$20. Ext. 657.

AUTOMATIC GAS STOVE - almost new. 30 in. oven. Cost \$190, will sell for \$75. Call Al, Ext. 344.

TEXAS RECEIVING CRYSTAL - for Citizens Band channel 6, 455 I.F., \$2. Also Lafayette radio control compound escapement F-256, new \$2.50. Frank Rumph, Ext. 2221.

1953 FORD - 4 door auto. trans., r&h, good cond. \$245. Ext. 301-23. Evening Ext. 528

TV - 10 inch screen. Excellent condition, \$25. Ext. 528.

WANTED

4 inch belt sander - Paul, Ext. 596.

8" ARBOR-TILT SAW - With or without motor. Also Boat-Trailer for 14-16 ft. boat. Call AT 1-8253 or Ext. 635.

120 BASS ACCORDION - Wm. Fedrich, Ext. 672.

WOODWORKING BENCH VISE - "C" Clamps - Circle Plane, H. Farrell, Ext. 548.

BOY'S SKATES - 5-6. MacKenzie, Ext. 572.

INFORMATION - regarding cleaning woman to work in Stony Brook area. Ext. 354, or ST 7-0835.

SKIERS - interested in one day ski trips in N.Y. area weekdays only. Call Al, Ext. 344.

SAIL BOAT - 14 to 16 ft. centerboard boat. Eric Forsyth, Ext. 2263.

CAR POOL

Driver wanted for existing car pool from Sayville - West Sayville area. Call J. Daane, Ext. 779.

Would like to join car pool from No. Patch.- Medford area. C. Brewster, Ext. 2208.

FOUND

LEATHER GLOVE - black, with red lining. Call Personnel Office, Ext. 2107.

LIGHT METER - Call Dr. Alaghemand, Ext. 301.

LOST

One stainless steel penknife. E. J. Tuthill, Ext. 2387.