

# the Bulletin Board

VOLUME 14 - NUMBER 30

Published by the BNL Personnel Office

APRIL 4, 1961

## ON-SITE BANK MANAGER RETIRES

Mr. Eugene Rogers, who has been manager of the on-site Peoples National Bank facility since it opened in 1948, retired on March 31, 1961. He has been succeeded as manager by Mrs. Vivien Richards. Mrs. Richards has also worked at the on-site banking facility since its opening.

## SIXTH BROOKHAVEN LECTURE

By ERNEST COURANT  
Physics Department

TITLE: High Energy Accelerators  
LECTURE HALL: 8:00 p.m., Wed., April 12

A buffet supper (\$2.75) will be served at the Brookhaven Center before the lecture, beginning at 6:00 p.m. Reservations should be made at least one day in advance, by calling Extension 2302 before 5:00 p.m. or Extension 2453 in the evenings.

Refreshments will be available in the Research Staff Lounge following the lecture.

## DISCOUNT TICKETS

Discount tickets to the following shows and events are currently available at the Personnel Office, 58 Brookhaven Avenue:

THE BEST MAN  
(Morosco Theatre, N.Y.C.)

CLYDE BEATTY - COLE BROS. CIRCUS  
(L.I. Arena, Commack)

THE KING AND I (in Grandeur 70)  
(Rivoli Theatre, N.Y.C.)

TENDERLOIN  
(46th Street Theatre, N.Y.C.)

## NEW BERA OFFICERS

The Brookhaven Employees Recreation Association's Executive Board held its monthly meeting on Tuesday, March 28th, at the Recreation Building. The first order of business was the nomination and election of officers from among Board members to serve until March 1, 1962.

## Election Results

President - A. CHRISTOFFERSEN  
Vice President - L. FULLER  
Secretary - M. SEMERJIAN

## THE RESEARCH LIBRARY



Periodical room of the Research Library.

A reasonably accurate description of the Research Library is that it is the Laboratory's supermarket of scientific information. It reached the size of a supermarket in the early years of Brookhaven National Laboratory, when loads of knowledge arrived by the truckful. This rapid build-up was deliberately planned, so that newly arrived staff members could do the literature research that was required before engaging in their particular projects.

Now that the annual intake has leveled off to roughly 1,000 journals, 2,500 books and 5,000 reports, the real job is to decide what to acquire, where to put it when it arrives, and how to find the needed bits and pieces of knowledge from the mass of printed pages that have accumulated on the shelves.

The selection of books to be added to the Library's collection is accomplished through a cooperative effort between the library staff and the scientific staff members. At the Library the announcements of scientific book publishers and reviews in scientific journals are scanned daily. Possible titles for purchase are accumulated until a cut-off date, and are then distributed in list form to the scientific staff. Each staff member checks titles which he recommends for purchase, and occasionally those he doesn't. Rejects are often indicated by marginal notes reading "This author doesn't know what he's talking about" or "This book is worthless." After a final review by the library staff, the orders go in.

The selection of our scientific journals is a far less complicated procedure, because there are so few new titles appearing each year. Publishers usually announce new journals by issuing detailed descriptive brochures. Such advertisement  
(Please turn to page 2)

**RESEARCH LIBRARY—Cont'd**

tisements are forwarded to the scientists whose field of interest is covered by the journal. Subscriptions are placed only after their approval.

When books have been received, a decision has to be made concerning their location in the Library. We could, of course, shelve all red books together and do the same for the greens and the blues. Instead, we do it the hard, but only logical way, by shelving them by subject.

Every book, therefore, involves a decision which is not always easy to make, and the Cataloging and Classification Section often becomes entangled in subjects within subjects within subjects. The other responsibility of this section is to maintain a complex card file which guides users to the books containing the information he needs.

The journals, of which there are now about 50,000 accumulated volumes, are arranged by title and are backed up with an extensive collection of abstracting and indexing journals.

Rounding out our stock is a complete collection of Atomic Energy Commission reports, now numbering over 10,000 titles. Many of these are now issued in micro-opaque rather than printed form. These reports are indexed in the excellent A.E.C. abstract journal, *Nuclear Science Abstracts*.

A small collection of books on various aspects of science in general is also provided.

Literature and bibliographic services are provided by both the Circulation Section and the Reference Section. With the assistance of the staff in the Circulation Section, scientists can obtain on loan old and hard-to-find books and journals. An indication of the size and usefulness of the Brookhaven collection is indicated by the fact that the Research Library loaned 450 volumes to other libraries last year - about one-third more than we borrowed.

A major service of the Reference Section is to assist scientists in keeping up-to-date with new developments as reported in the literature. This is done partly through the editorial supervision of the *Weekly Selected Reading List*. This weekly publication is a list of important articles of interest to the Brookhaven staff which have been selected from journals available in the library.

Another service provided by this section is in bibliographic assistance, ranging from brief literature searches to the assembling of extensive and continuing bibliographies.

Although the major emphasis of the acquisition and bibliographic service program is directed toward the scientific interests of Brookhaven, the library also supports the administrative, educational and training functions of the Laboratory. Files of A.E.C. semiannual reports, news releases and selected committee hearings are maintained. Catalogs from approximately 300 colleges and universities are shelved in the Reference Section. Language records in Russian, French, Spanish, and German are provided for staff members who require refresher courses before leaving for extended trips abroad.

At the present time, the Library is devoting much effort to the assembling of a comprehensive collection of works on mathematics, as a result of the growing requirements of the Applied Mathematics Division. It is anticipated that the activities of the Research Library will continue to change and grow, in line with the Laboratory's ever-shifting patterns of research.

**FRINGE PATTERN****NON-TAXABLE SICK LEAVE**

The Internal Revenue Code of 1954 provides that payments made to employees for sick leave under the Laboratory sick leave policy may under certain circumstances be excluded from gross income for Federal income tax and Social Security purposes. Payments received under the following circumstances may be excluded:

1. If absence from work is caused by SICKNESS extending beyond seven consecutive calendar days, sick leave payments up to a weekly rate of \$100 attributable to the eighth and all consecutive days of absence thereafter may be excluded from gross income.

2. If absence from work is caused by SICKNESS, and the employee is HOSPITALIZED for one or more days during that absence, sick leave payments up to a weekly rate of \$100 attributable to the first day of absence thereafter may be excluded from gross income.

3. If absence from work is caused by PERSONAL INJURY (either occupational or non-occupational), sick leave payments up to a weekly rate of \$100 attributable to the first day of absence and all consecutive days of absence thereafter may be excluded from gross income.

Any employee who has sick leave payments during 1961 which fall in one or more of the above three categories should fill out Form No. 989-A, obtained through your Department, IMMEDIATELY AFTER THE ILLNESS and return the form to the Payroll Section. It is important to note that Form 989-A SHOULD BE COMPLETED UPON THE EMPLOYEE'S RETURN TO WORK so the information can be reported on the W-2 form next year. If you fail to report non-taxable sick leave at the time it occurs, it will be assumed that the sick leave payments are taxable.

If an employee elects to use vacation leave to provide wages while absent because of illness or injury, vacation pay may be considered in computing the amount of sick pay exclusion.

**BNL SAFETY RECORD**

32 Days since last Disabling Injury.  
(March 2nd - April 2nd)

**SKI CLUB NOTICE**

The last Ski Club meeting of this season will take place on Monday, April 10th, at 8:00 p.m. in the Recreation Building on York Lane. Elections of officers for next season! Discussions of next season's activities! Movie! Try to make this meeting!!

**SWIMMING POOL SCHEDULE**

Tuesday, Wednesday, Friday  
7:00 p.m. - 10:00 p.m.  
Thursday  
5:00 p.m. - 10:00 p.m.  
Admission: 35¢ for employees and family members; 60¢ for guests.

**HOME PHONE NUMBER CHANGED?**

Many telephone numbers in the vicinity have been changed recently or will be changed in the near future. Be sure to report all changes in home phone number to Personnel Records, 58 Brookhaven Avenue.



## BERA BOWLING

### BLUE LEAGUE

Techs are league champs - Splitters second. The Tech took three from the Pacers and thereby clinched first place. The postponed game between the Techs and the Powermites was forfeited by the Powermites and gave the Techs a four point frosting on the cake. Dick Larson was high man last week with a 196, 195, 560 series. Hildenbrand ran second with a 210, 198, 538 series. Their fifth man knocked more pins than the best of the Pacers.

The Splitters took three from the Powermites with Sparacino's 194, 517 series leading the way. Spira rolled a 181, Gallagher a 189, 169, 514 series. For the Powermites, Walker looked best with a 209 game. Nerenberg had a 188 and Brockbank a 186.

The Nuclides, who need one more point for third place in the league, took 3½ from the Meteors in another one of their score keeping duels. Majeski was high man with a 213 game, Green bowled a 188. For the Meteors, Lambeck was high with a 170.

The Snafus who need four points for third place split with the Bubble Boys. Uddman rolled the high game of the night a 227, 540 series. Sucher had a 188 game. For the Bubble Boys, Ferrante bowled a 197, 180, 528 series.

Blue Ball of the week to the Splitters' Sal Sparacino with a 580 gross series.

### RED LEAGUE

By popular demand the Bismuth Kings get top billing after their really hot night of bowling. They bowled (and I use the word loosely) against the Downunders, giving them 3 points. The B.K.'s tried to give the Downunders 4 points but 3 was all they would take - real sports. The B.K.'s were led onto victory (1 point) by Irving Smeargas (Varela) 479, Dead-eye Taylor 392, and their real strength, Watson with a smashing 360. (Wait 'till the sweeps.) The only Downunder who was way out was Bieselin with his 478.

Looks like the Gnats like their spot in the League because they only took 1 point from the quiet men of the Biology team. The word "quiet" refers to 4 of the Biology men. Their last man, McGovern, rolled a 493 and was helped out (but not enough) by Schairer with a 469. The men of the Gnats who fought hard for that point were Bachsmith with 471 and, of course, VanNorman again with a 556.

The Bugs rolled it off against their arch enemies, the Skins, and the story was the same - the Bugs took 3 points from the Skins. The law came through once again for the Skins; Weinmann 491 and Bugala with a 467. The Bugs still have the same powerhouse, Laurine 531, Iarocci 525 and Shipley with a 479.

### GREEN LEAGUE

The old Timers II are Green League champions, winning over the Black Birds 4-0. Keating had 187, 533 and McKenna 190, 505 for the winners. The Old Timers III won over the

Mole-Stars 3-1. Hardman had 186, 521 for the Old Timers III. The Reefers lost to the Electrons 3-1. Ratyca 177, 512. The Fire Department beat the Old Timers I 3-1. Peters had 190, 548, Rhodes 198, 534, and Reilly 169, 500.

### LADY KEGLERS COLUMN

With Twinkle Toes undisputedly in 1st place, 2nd is still a big mystery; All Thumbs took 3 points from the Twinkle Toes while the Alley Kats tied them once again by taking 3 points from the Nightingales. Odds and Ends took 3 points from the Boo Boo's with their Doris Tenzer converting the 5-10 split, against Grace Siemen rolling a 202, 587 series (new high series for the league). Medigals forfeited to the APC's. Other high games for the night were: Theresa Barbato 180, and Joyce Sims 161.

### BOWLING CHAMPIONSHIP

The Bowling Executive Board at its meeting on March 30th selected, by the toss of a coin, the Port Jefferson Bowl as the site for the All-League Championship Tournament. It was decided to hold the tourney at a different set of alleys each year on a rotating basis. Last year's event was at the Patchogue Bowling Center and next year's is planned for the Patchogue Recreation.

The tournament will be held at 6:30 p.m. on Wednesday, April 19th.

### KNOCK KNOCK . . . WHO'S THERE?

Nobody . . . They're all out making plans for the big night. April 29th - Bowling Awards Dance and Party.

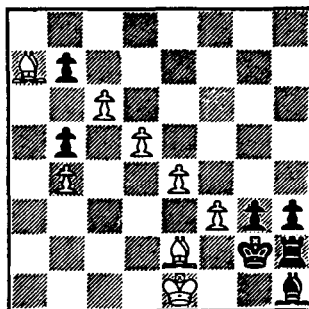
What luck to be a bowler - free music, beer, set ups, laughs and MOST OF ALL a night out with the entire bowling league. What more could you want????

See you there - ready for a good time.

Tickets will be distributed by your captains in about two weeks and don't forget to volunteer, you'll enjoy it twice as much.

### CHESS PROBLEM

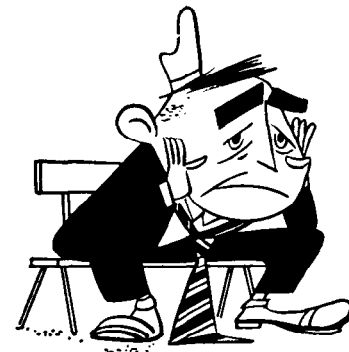
In this week's problem, submitted by the BNL Chess Club, there should be a mate in 5 moves. Can you do it? Answer elsewhere in this week's BULLETIN BOARD.



The Chess Club meets every Tuesday night at the Recreation Building in the Apartment Area. All are welcome - if you don't know how to play, we'll teach you.

### FISHING CONTEST (SEZ WHO?)

A Fisherman's Lament, by Jim Klein



The weather forecast for Tuesday was too good to be passed by, so I talked one of my co-workers, Pete Hlavak, into using one of his hard-earned vacation days to do some fresh water fishing. We fished one lake for about two hours - no fish. Then to my second best lake, where Pete caught one yellow perch about 3 inches long. After 2 hours of fresh air, wet lines, and bad fishing, I decided poor Pete needed a treat.

I broke down and took him to my favorite white perch spot. Two minutes later Pete had a fish (about 12 oz. of white perch). He yelled for a net, and I yelled back, "Lift him in!" He screamed, "I only have 5 pound test!" I politely explained that I use a 4 pound test, and told him again to lift it in. The line broke and Pete lost his first fish, probably because his terminal tackle had been worn in the previous fishing. For one hour we caught a fish for every cast, a total of about 60 perch, of which we kept 20. With the contest in mind, Pete jealously guarded his fish, weighing every one with a De Liar. Finally he did it; he hooked a monster of 1½ pounds. Needless to say, Pete has seen the last of my favorite perch spot. I have the local cops alerted for his car, a pigeon egg blue 1951 Impala. Pete will be picked up for petty larceny - stealing the Fisherman of the Month prize from yours truly.

Leading contenders in the Fishing Contest so far are (all with white perches): Pete Hlavak, 1½ lbs., 375 points; Jim Klein, 1½ oz., 225 points; John McCafferty 1½ lbs., 375 points.

### WHAT, ME WORRY? Picnic July 29

I'm going to the picnic on July 29th, but why should I worry about working on the committee? Someone else will do it; I'll just go and have a good time. (Nice people call Bob Fuchs on Ext. 394.)

### UPTON RIFLE AND PISTOL CLUB Medford Range Opening Delayed

Due to repairs, opening of the Medford Range has been delayed. This means that our big bore season will get off to a late start. The new starting date will be announced in THE BULLETIN BOARD.

Don't let this delay your signing up. Call A. Lukas, Ext. 769, or P. Colombo, Ext. 624. An excellent program has been arranged. Pete Colombo has assured this reporter that his "do it yourself" (from scrap metal) rifle will be ready for opening day. Get out with us, do some good shooting, and enjoy Pete's show.

A reminder - the next monthly meeting will be Thursday, April 6, at 8:00 p.m. in the Recreation Building.

### ANSWER TO CHESS PROBLEM

WHITE	BLACK
1. B - N 6	P x P
2. B - B 5	P x P
3. B - Q 4	P x P
4. B - K 3	P x P
5. B - B 1 mate.	

### SOFTBALL

Well, we've done it! Picked up that extra team to even things up. Now there are 14 teams entered - thanks to Biology. At last week's captains' meeting Chairman Bob Jones selected several working committees, discussed the schedule proposals, and picked the starting date as May 2. League entries will be accepted until April 14.

J. Sadofsky was elected League Secretary and W. Knapp was elected Treasurer.

**Players Pool** - If you are not on a team now, and would like to be, call the Recreation Office, Ext. 391, and you will be assigned to a team.

Entry blanks and information are at the Recreation Office, 3 Center St.

**Next Meeting** - Friday, April 7, at noon in the Recreation Office.

### CLASSIFIED ADS

#### FOR SALE

1954 PLYMOUTH STATION WAGON - 2 dr., one year old clutch, 4 good tires, (2 brand new), new battery. D. Ballantine, Ext. 2211.

1956 BUICK SUPER - 2 dr. hardtop, coral and white, r&h, power brakes & steering. 44,000 miles, good cond. Ext. 2212, Dave Biggins.

1953 FORDOMATIC - R&h, new tires, paint, battery, carb., shocks. Clean, runs well. \$125. Hank, Ext. 601.

1950 PONTIAC - 1952 engine, 6 cyl., std. trans., new battery, brakes, and generator, good rubber. \$125. Ted Schreiner, Ext. 2604.

VW 1958 SEDAN - Excellent condition. Driven by bald headed man with tender right foot. Ext. 396.

MUFFLER - Brand new muffler, tailpipe for MGA. \$5. H. Spiess, Ext. 693.

HOUSE - 2 bedrooms, 2 baths, living room, den, dining room, kitchen & enclosed patio with heat. ¾ basement, oil forced hot air heat. Near stores and schools. BE 7-1789 after 6.

HOUSE - Yaphank on well-landscaped, wooded corner lot, 125x200 ft., two bedrooms plus extra finished room in cellar, large living room, modern kitchen, dishwasher, full basement. Ten minutes from Lab. \$10,800. SHoreham 4-5096.

HOUSE - Year round, 100x147 ft., 4 rooms, screens, storm windows, part cellar, central heating, oil. ATLantic 1-6695.

HOUSE - St. James, in fine residential area, three bedroom ranch with attached garage, brick front, finished recreation room in full basement, ¼ acre, many extras. Ext. 563 or JU 4-6283.

RUNABOUT - 16 ft. - 15 h.p. Johnson motor. Whole hull recently fiberglassed. Painted this spring, ready to go. Will seat 5 comfortably. All in A-1 cond. Must sell. \$260. BE 7-0294.

16 FT. CUSTOM FIBERGLASS RUNABOUT 1960 - 40 h.p. Evinrude engine, Holsclaw Tilt Tongue Trailer. Taylor safety plate glass windshield, Deluxe Navy top, side curtains, mooring cover, 5 seat cushions, 4 life jackets, 2 anchors & rope, dry charge extinguisher, speedometer, running lights, remote control steering, excellent cond. \$1445. R. Graeb. Ext. 2409.

AEROCRAFT BOAT - 12 ft. extra heavy aluminum. 7½ h.p. Scott motor. 14 ft. Holsclaw Trailer. \$350. H. Shipley, Ext. 448 or JU 8-7824.

19 FT. EXPRESS OUTBOARD CRUISER - 35 h.p. Evinrude engine used 10 hours, good cond., needs spring painting. \$1,000. J. Hare, Ext. 2165 or GR 5-2888 after 6.

SKIN DIVING EQUIPMENT - including one diver tank, with plastic harness and J valve, one rubber jacket and weight belt, one aqua-lung, minstrel type with hoses & mouth piece. In top notch condition. HR 3 9264 after 6.

HEATH MODEL O-11 SCOPE - Like new, \$50. Sofa with slip cover in fair cond., \$25. Lee Rogers, Ext. 2212.

WHITE COMB. GAS & OIL RANGE - Also Rheem 52 gallon elec. water heater. Both in fine cond. GR 5-3525.

MEISSNER FM TUNER - it plays, but needs a good antenna. \$10. M.W. Greene, Ext. 779 or AT 6-0237.

CHEST OF DRAWERS - dresser with mirror, night table, sewing table, \$40. Secretary \$8. Pion, Ext. 2430.

#### WANTED

ENLARGER - for 35 mm. Must be reasonable. Pat, Ext. 610 or GR 5-0479.

100 FT. OF FENCE - Good cond. H. Williams, Ext. 2205.

ONE CONVERTIBLE CAR - Cheap, not too cheap, must run and have passed inspection. C. Spirio, Ext. 686.

GUITAR - Used Spanish or jazz guitar, in good cond. Ext. 524.

ELEC. RANGE - 20 or 24 inch apt. size, must be white and in good cond. R. Smith, Ext. 541 or GR 5-3632.

#### LOST AND FOUND

FOUND - 1 sterling silver tie clip or money clip made in Mexico. Found at the Concert, March 30. Call Personnel Services, Ext. 2107.

FOUND - man's Winton wrist watch. Call Personnel Services, Ext. 2107.

FOUND - 2 stereo speaker units. Owner may claim upon reporting and identifying speakers at Security Office.

LOST - pedometer. Lost in Cafeteria, Pistol Range or T-480. Please call J. Kelsch, Ext. 354.

#### CAR POOLS

Join or form carpool from Bayshore. Rod, Ext. 604.

Fifth driver needed for established car pool from Patchogue, south of Sunrise Hwy. Ext. 472.

Ride wanted from Sunrise Highway, West Islip to Medical Center four days a week. Al Williams, Ext. 301-37.

Want to join car pool from Amityville daily. Ed Hemminger, Ext. 2168.