

the Bulletin Board

VOLUME 14 - NUMBER 38

Published by the BNL Personnel Office

JUNE 1, 1961

BERA FILM SERIES PRESENTS "SEVENTH SEAL"

On Monday, June 5, "Seventh Seal" will be shown at 8:30 p.m. at the Lecture Hall. This film, directed by Sweden's brilliant Ingmar Bergman, portrays life in medieval Sweden during the plague. The contrast between the stark reality and despair of the times and the trusting innocence of a family of traveling performers makes this a compelling film. It has such an impact on its audiences that many feel it is one of the most powerful films ever made.

WESTBURY MUSIC FAIR TICKETS AVAILABLE

Twenty percent discount tickets to the Westbury Music Fair are now available at Personnel Services, 58 Brookhaven. Seat reservations and payment are made directly through Personnel Services. Payment must be by check made payable to Westbury Music Fair.

1961 Season Schedule

June 6-25 FLOWER DRUM SONG
June 27-July 2 Carol Channing in
SHOW GIRL
July 4-9 THE VAGABOND KING
July 11-16 Julia Meade in
THE PAJAMA GAME
July 18-23 GENTLEMEN PREFER BLONDES
July 25-30 Paul Hartman in
TAKE ME ALONG
August 1-13 Monique Van Vooren in
DESTINY RIDES AGAIN
August 15-20 THE MOST HAPPY FELLA
August 22-27 THE MERRY WIDOW
Aug. 29-Sept. 3 ANNIE GET YOUR GUN
September 5-24 THE MUSIC MAN
Reservations may be made now for
all performances this season.

GOOD TIME!

That was the comment from all who attended the Square Dance at the Rec. Hall last Tuesday. Thanks to the enthusiasm and talents of the "FEARSOME FOURSOME", everybody had a ball and can't wait until the next one.

GYMNASIUM TO BE CLOSED

Due to the Biology Conference and preparations for the BERA Dance, the Gym will be closed for all physical activities June 5 through 9, and June 11.

This will **not** affect the pool, which will remain open.

STAMPS AND THE ATOM



1



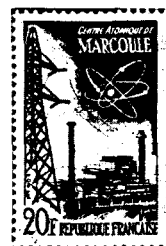
2



3



4



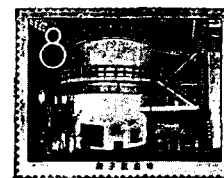
5



6



7



8

From the "Bulletin de la Communauté Européenne" of November 1960.

Only a relatively few years have passed since the first reactor was constructed, but the philatelist (stamp collector to the uninitiated) can already gather about fifty stamps to illustrate the subject - "The Atom". The stamps shown above represent the following countries:

1. Belgium, 2. Germany, 3. United States, 4. Yugoslavia,
5. France, 6. Japan, 7. U.S.S.R., 8. China.

The stamp shown in figure 3 was designed by BNL's George Cox. George's design won a nation-wide contest in 1955 for the design of a commemorative stamp for the Atoms for Peace program. Some 120,000,000 of these stamps were issued.

HOW SAFE IS YOUR CAR?

Order blanks for auto seat belts at a discount are available at the Personnel Office. Belts listing for \$9.00 are available for \$4.50, with the deluxe \$12.00 list price belts available for \$6.50. This includes all parts and instructions for installation, which requires drilling two holes in the floor for each belt. The belts come in a variety of colors and meet both Federal and SAE specifications.

SWIMMING POOL

The pool will remain on its present schedule through Friday, June 16.
Tues.-Wed.-Fri. 7:00 p.m. -10:00 p.m.
Announcements of the Summer Schedule will be made shortly.

SHORT BULLETIN BOARD THIS WEEK

Due to the three-day work week, this issue of THE BULLETIN BOARD is an abbreviated one.

MOON TO SHINE - JUNE 9

The weatherman may not know it - but we do! The moon (in all shapes and sizes) will shine on June 9 from 9 P.M. until 2 A.M. at the gymnasium. Admission will be \$1.50 each for employee and escort; \$2.00 each for guests.

Mike Greco and his well-known orchestra will play for your musical enjoyment; gala entertainment has been planned.

The first 100 couples to arrive will receive a special prize - so be prompt! A Charleston Dance Contest will highlight the festivities - get busy now and practice, all you old-timers (and new-timers too). A famous dance team - recently arrived from the Moon - will perform for your entertainment, and a special door prize will be awarded.

Hot dogs, coffee, beer and ice will be available at a nominal fee.

P.S. - HELP IS NEEDED by the Decorating Committee. If you are free June 7 or 8, come on down to the gym in the evening and join in the fun of decorating for the June Moon Dance.

BERA SOFTBALL

National League

Monday: Pop Ups vs. Health Physics rained out.

Tuesday: Cosmotron remained undefeated by beating the Gnats who haven't had any luck at all yet. Bob Gagradi played a fine defensive game for the winners.

Cosmotron 18, Gnats 8.

Wednesday: Metallurgy came from behind to tie it up in the last inning. This was probably the closest and best played game so far this season.

Metallurgy 9, Dirty Sox 8.

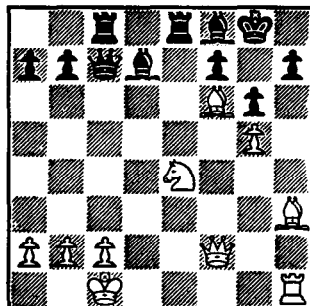
Thursday: The Phoubars beat the Old Timers in another really close contest. Everyone had a good time except Geo. Sabine. He got the you-know-what award.

Standings

TEAM	WON	LOST
Cosmotron	4	0
Metallurgy	3	0
Phoubars	2	1
Dirty Sox	2	2
Pop Ups	1	1
Old Timers	1	3
Gnats	0	4

CHESS PROBLEM

In this week's problem it is White's move. Answer elsewhere in this week's BULLETIN BOARD.



Any questions regarding the weekly chess problem should not be directed to the BULLETIN BOARD but to Martin Van Lith, Ext. 565.

MICROMET IS HERE

To those who ordered Micromet: pick up your order at Personnel Services 58 Brookhaven.

ANSWER TO CHESS PROBLEM

White wins a rook, at least, by B xB. If the Black Queen takes the Bishop, it would run into mate by White's 2 R x P, etc.

DISCOUNT TICKETS

Discount tickets to the following shows and events are currently available at the Personnel Office, 58 Brookhaven Avenue.

1ST ANNUAL OUTDOOR - INDOOR SHOW
(L.I. Arena, Commack)
THE MIRACLE WORKER
(Playhouse Theatre, N.Y.C.)

CLASSIFIED ADS

FOR SALE

1959 PLYMOUTH - tan, 2 dr., 6 cyl., standard trans., r & h, original 14,000 miles. Excell. cond. AT 1-7595.

1951 TUDOR FORD V-8 - Black, good cond. J. Munch, Ext. 657.

1959 TR-3 - Blue, r & h, \$1600 or best offer. M. Navenberg. Ext. 620 day, Ext 528 evening.

1959 RENAULT DAUPHINE - 4 dr., new tires, r & h, excell. cond. \$595. SE 2-8950.

1950 CHEVROLET COUPE - r & h, inspected, ready to go. \$100. YA 4-3469 or Ext. 2187.

HOUSE - Split level on wooded half-acre lot. Private beach rights. 3 bedrooms, 1 1/2 baths, large living room, 26 ft. recreation room, fireplace, dishwasher, screens, storm windows beautiful neighborhood. \$18,500. SH 4-9877 evenings.

3 BEDROOM BRICK RANCH - East Patchogue, fireplace, oil hot water heat, 2 car garage, 1/4 acre lot, patio, wall-to-wall carpeting, many extras. House 6 years old. \$13,000 mortgage available. Asking \$14,600. AT 6-8712.

HOUSE - Miller Place, ranch style, six rooms, enclosed sun porch, full basement, large living room, 125' x 125' corner lot, fully wooded, oil heat, dining area, knotty pine kitchen cabinets, plus many extras. Must sell. \$15,500. HR3-9236

HOUSE - Brookhaven, 120 x 120 ft corner lot, two bedrooms, den or third bedroom, living room with fireplace, kitchen, dining area, many extras. \$12,500. BE 7-0757 M.

HOUSE - Holtsville, on a 90 x 180 ft. well landscaped wooded lot, Cape Cod, full dormer, four bedrooms, full basement, combination storm and screens. \$12,000. Regan, Ext. 2387 or GR 5-9241 after 6 p.m.

3 BEDROOM BRICK RANCH - 2 car garage, private wooded plot, fireplace, \$2,500 cash, \$17,000 FHA Mortgage can be obtained. No. Huntington area - July 1 occupancy. Hamilton 1-3847.

HOUSE - Bellport, 80 x 80 ft landscaped plot, 3 bedrooms, kitchen, living room, finished play room, utility room and attached garage. Includes fence and special windows. \$11,500. M. Weitz, AT 6-9259.

HOUSE - East Patchogue, brick, 3 bedrooms with abundant closets, extra hall closets, large living room with oversized fireplace, dining room, modern kitchen with dishwasher and wall oven. Huge finished basement room garage 30 ft. long, lot 100 x 125. Excell. lawn and landscaping. No through traffic, convenient to elementary school. \$19,500. Call Shapiro, Ext. 397 or AT 6-8911 evenings.

GARWOOD SPEEDBOAT - 19 ft, 105 h.p., grey marine, all accessories including trailer. Very good condition. Asking \$1350. Ext. 451 or AT 1-7942.

1955 OLYMPIA - 14 ft. boat with 1955 Evinrude - 15 h.p., motor; controls, windshield, seats, deluxe - etc. \$235 complete. AT 1-7595.

10 FT. FIBERGLASS DINGHY - motor just broken in, \$300. Ted, Ext. 2187 or LT 9-2470.

1956 10 H.P. JOHNSON - \$135., runs like new, looks like it too! Motor must be heard to be appreciated. Fully guaranteed. Ext. 482 or BE 7-1092 after 5:30.

CRIB (1) - foam rubber padded innerspring mattress. Best offer. C. Fong, Ext. 301.

TELESCOPE - refracting - 60 mm, eyepieces to give powers of 40, 65, 90 and 115. Tripod, carrying case. Best offer over \$50. J. Faust, Ext. 2255.

PHILCO ELECTRIC RANGE - 40 inch size, good condition. Best offer. Ronald Graeser, Ext. 2352.

GAS RANGE - older model, good cond., best offer over \$25. J. Faust, Ext. 2255.

SQUARE PLAYPEN - with nylon net \$10. Baby carriage, Marmet coachette, \$40. Has wooden body with metal collapsible frame. Can also be used as car bed. Baby carriage - cloth body with plastic lines. Can also be used as car bed. Frame folds for storage. Also known as "boodle buggy" price \$12. Bouncing chair "Welsch Playmate" \$4.50. All in A-OK cond. B. Fox, Ext. 784.

UNIVERSAL TRAILER HITCH - Retractable. Will fit all American cars. List price \$16.00. Asking \$10.00. G. Floyd, Ext. 2254.