

the Bulletin Board

VOLUME 14 - NUMBER 41

Published by the BNL Personnel Office

JUNE 20, 1961

SUMMER FILM SERIES

The Summer Film Series will begin on Thursday, July 6, at 8:30 p.m. at the Lecture Hall. A film will be shown every Thursday through September.

The first presentation will be "Little Fugitive." It is a simple vignette of childhood experience and a wonderful voyage of exploration as the camera captures the wonder, excitement, the humor and pathos of a small boy's adventures at Coney Island. With Richie Andrusco as "Joey." Silver Lion Award at Venice Festival.

BNL SAFETY RECORD

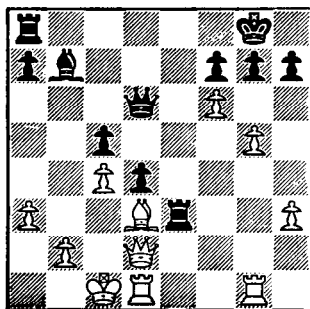
31 Days Since Last Disabling Injury
(May 19 - June 18)

HEALTH PHYSICS FELLOWS ARRIVE

Sixteen Health Physics Fellows arrived at BNL for the summer on Monday, June 19. They are graduate students at the University of Rochester, Harvard University, and University of Michigan, whose studies are sponsored by Atomic Energy Commission fellowships in health physics. The purpose of these fellowships is to make available to atomic energy programs individuals well trained in both the theoretical and practical aspects of radiation protection. Brookhaven's role in this program is to educate in the practical aspects of health physics operations. The fellows will spend a nine-week training period in the Health Physics Division this summer.

CHESS PROBLEM

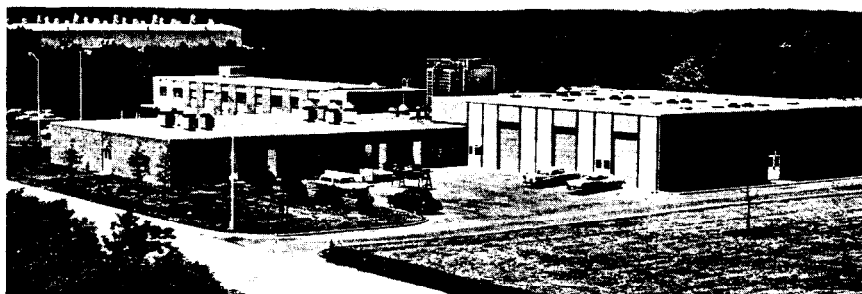
In this week's problem it is White's move. Both Black and White are even in pieces. White's position seems to be better, but is it good enough to win? Answer elsewhere in this week's BULLETIN BOARD.



NEW

NUCLEAR ENGINEERING BUILDING

COMPLETED



Views of Phase I of the Nuclear Engineering Building.
(Top, looking NW; Bottom, looking NE)

Phase I of the Nuclear Engineering Building at 75 Rutherford Drive is essentially complete and department personnel are moving in. This building represents part of a program to consolidate the different parts of the Nuclear Engineering Department into a smaller number of buildings and to provide better experimental facilities. Total cost of Phase I of the building was slightly less than \$2 million.

The building provides facilities for approximately 75 people. It is occupied primarily by members of the chemistry and chemical engineering divisions, who were formerly housed in the Hot Laboratory, Building 197, and several barracks-type buildings.

The new facility is a cross-shaped structure; chemical engineering laboratories, chemistry laboratories, services areas, and offices are each housed in one of the four wings. The building consists of approximately 24,000 square feet of net working space. In addition to the laboratories, service areas, and

(Continued on Next Page)

NE Building—Cont'd

offices, the building houses a stockroom, shop, counting room, instrument maintenance area, and dark room. The chemistry and chemical engineering laboratories incorporate the most modern design and equipment. They have been designed for adaptability so that they may usefully serve a number of different projects.

Such things as fire retardant construction, extra-strong floors, availability of systems for the handling of both gaseous and liquid radioactive wastes, easy access to utilities and large amounts of electrical power allow the researchers to set up and carry forth their experiments with more ease than was possible previously, in the converted barracks buildings.

The exterior of the building is of brick and prefabricated panels, and the interior walls are painted concrete block.

One of the advantages of the cruciform shape of the new building is that it can very easily be expanded by adding on to each of the wings. Construction in the future of Phase II of the building would add approximately 38,000 square feet of working space. The Nuclear Engineering Department's mechanical engineering, operations, design, and reactor theory personnel would then be housed in the expanded new building.

SWIM CLASS

APPLICATION: Swimming Classes Date.....
Name Son/Daughter Age* Classification

1.

2.

3.

4.

5.

*If under eight years old, state height.

I wish to register the above child in the Swimming Classes. I understand that he or she is not permitted to leave the SWIMMING POOL AREA. I agree that he or she may be denied participation in the program for failure to observe the rules.

.....
(Employee's Signature)

.....
(Life No.)

.....
(Extension)

Forward this application with registration fee to the Recreation Office, 3 Center Street.

REGISTRATION DEADLINE - JUNE 30

ANSWER TO CHESS PROBLEM

White wins with.....

1. Q x R . . . If Black takes the Queen, then
2. B x P check followed by
3. R x Q

Please register early! A program will be arranged based on the returned applications. THE BULLETIN BOARD will announce the time and schedule of classes.

Important: If there are days your child can NOT attend classes, indicate this on application. No registration fees will be refunded.

SWIMMING CLASSES: 1:00 - 2:30 p.m.

1. These classes are for all Laboratory employees' children.

2. Children must be eight years of age or four feet in height.

3. Each child will be scheduled for a specific period, probably once a week depending on response.

4. A fee of \$2.00 per child must accompany application. (Make checks payable to BERA.)

5. Children will report at the Swimming Pool not earlier than 12:50 p.m.

6. Classes will end at 2:30 p.m. Off-site children must remain in the pool area until picked up by parents. On-site children must remain in the pool or proceed directly to apartment area.

7. Children will pay daily admission fee (.35) or present season ticket to enter swimming pool.

8. To the best of your knowledge, select and write in on application the group your child qualifies for: **Beginner**, Non-swimmer or NOT able to swim 40 feet. **Intermediate**, Can swim at least 40 feet. **Swimmer**, Can swim 100 yards.

LOCKER REGISTRATION

All locker registrations at the Gymnasium and Swimming Pool expire as of June 30. If you wish to keep yours - please re-register for it at the Recreation Office.

POOL OPEN FULL TIME

Beginning Monday, June 19 the summer schedule of rates and hours will be in effect as follows:

POOL OPEN MONDAY THROUGH FRIDAY
2:30 P.M. to 9:30 P.M.

DAILY ADMISSION RATES

Employee	\$.35
Family member	.35
Guest	.60

SEASON TICKETS

(June 19th to August 31st)

Employee	\$ 5.00
Family	10.00

Tickets will be on sale at the Pool Office.

DON'T BRING CHILDREN BEFORE 2:15 P.M. The pool does not open for general admission until 2:30 p.m. daily. Parents bringing children to the Laboratory to swim are requested not to do so before **2:15 p.m.**

GYMNASIUM

The gym will be open for evening activities during the months of July and August beginning Monday, July 3rd. Each evening will be scheduled for "General Activity" - badminton, basketball, table tennis, volleyball, exercise, etc. . . The facility is equipped with mens' and ladies' locker and shower rooms. Soap is provided and towels can be rented.
Open Mon., Tues., Wed., Thurs. to 9:30 p.m.

OPERATION GET-TOGETHER NO. 4

This year, after long and hard deliberation, the Committee has decided to add a bit of culture to the BERA sponsored Operation Get-Together to be held on-site July 29, 1961. The Contest Committee has responded enthusiastically to a suggestion that the contests of Operation Get-Together be on a higher level. This year there will be contests offered in the fields of Music, Art and Fashions. (Watch THE BULLETIN BOARD for further details.)

Ike Cole, in charge of tickets, reports that tickets will be offered for sale on or about July 1. Get your tickets early this year and don't miss out on the fun and good times.

NEW BRIDGE CLUB

Formation of a biweekly duplicate bridge club with master point awards is now being planned for an official start this fall. A couple of sessions will be held during the next few weeks. All those interested please fill out the form below and send it to Sanford Wagner, Building 194, or call him at Ext. 618 or 2373.

Even if you have played only rubber bridge previously, send in your name.

- ☐ I am interested in playing duplicate bridge in the fall.
☐ I would be interested in playing in a duplicate game next week.

Name
 Ext.

THEATRE GROUP MEETS

There will be a general meeting of the Theatre Group Wednesday evening, June 28, promptly at 8:00 p.m. in the Recreation Hall. Election of officers for the coming year will take place. Refreshments will be available. All members and others who are interested are urged to attend.

The candidates for office are as follows:

President - JERRY SADOFSKY, JIM POWELL
 Vice President and Treasurer -
 ED LOESER, CARL GOODZEIT
 Secretary - RITA STRAUB, VALERIE HUGHES
 Chairman of the Theatre Committee -
 ED NIELSEN, FRED THOMPSON
 Chairman of the Advisory Committee -
 GORDON DANBY, CLIFF SCHWARTZ
 Chairman of the Program Committee -
 GINNY SAYRE, BERTHA KUGELMAN
 Others may be nominated from the floor.

RECREATION OFFICE HOURS

MONDAY THROUGH FRIDAY
 11:30 a.m. - 12:30 p.m.
 4:00 p.m. - 5:00 p.m.

UPTON RIFLE AND PISTOL CLUB

One of the first clubs organized at Brookhaven for employee recreation was the U.R.P.C. Its founding goes back to 1947. It is a chartered club of the National Rifle Association and as such receives certain benefits extended by the N.R.A. The club serves Brookhaven employees interested in guns and shooting and provides personal association with fellow shooters. Where a desire exists and facilities permit, an effort will be made to satisfy all members' needs.

The last few years have seen increased activity in the club's programs. There are now organized programs for small bore, pistol, and skeet shooters. A ten-week small bore match is now in progress. The 100 yard large bore match has just finished and a 300 yard match is scheduled in the Fall. Pistol shooters participate in a league of approximately ten clubs every fall and winter, with occasional club matches in between. A skeet program is also scheduled for Fall. Trophies or prizes are awarded to the top scores in these categories. N.R.A. classifications and awards are also available to persons who qualify. These activities are in addition to the personal shooting a club member enjoys at the club range. Use of the range obliges the members to obey the Rules of the Range. This program offers a member a chance to exercise his choice of events and to participate in them.

Shooting facilities available to club members are a 50 yard pistol and small bore range on site and a 300 yard large bore range on the north property. A club room in the recreation building is equipped with some reloading and shooting equipment. Available for use in club matches are four M-1 rifles and a supply of .22 calibre rifles. Ammunition, targets, and some reloading equipment are for sale at cost.

So much for the present, now, what plans for the future? The members are looking forward to the day when we have our own indoor range to pleasure away the long winters. Activities then will be unlimited. One of the most important of these is the training and instruction of Brookhaven boys and girls in safety and marksmanship. We may possibly have a future Olympic champion in our midst. The N.R.A. reaches 350,000 boys and girls yearly to help combat juvenile delinquency. With a home range, participation in an industrial league by the rifle shooters will be possible and will save the pistol shooters half the traveling time they now spend. Other possibilities are hunter training and a women's branch of the club. In brief, a home range will provide more activities for more employees.

Experience has shown the status of our club in marksmanship is such that we are fully capable of competing with the best opposition Long Island has to offer, in any event. Here is one example. Of the four club members that entered the Brookhaven Town Recreation Department matches last year, two took second place and one third place in different events.

Employees who are interested in joining the U.R.P.C. should contact the present secretary, Dick Chapman, Ext. 624. Meetings are the first Thursday of every month. Next meeting is in September after the summer interval. Club dues are \$5.00 for new members, \$3.00 yearly thereafter.

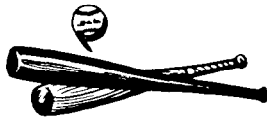
BOWLING PARTY PICTURES

Photos of the highlights at our Annual Bowling Awards Evening are now on display at the Recreation Office.

RECREATION BUILDING

The Recreation Building will be open Monday through Friday evenings from 5:00 p.m. to 11:00 p.m. during July and August.

SOFTBALL



NATIONAL LEAGUE

MONDAY

Old Timers 13 Potsareebies 2
Beer game anyone???

TUESDAY

Phoubars 14 Dirty Sox 9
Phoubars continue to play a good steady game.

WEDNESDAY

Metallurgy Gnats
RAIN

THURSDAY

Pop Ups 8 Cosmotron 7
George Oldham's fine defensive play was the reason.

Standings

Team	WON	LOST
Metallurgy	4	1
Cosmotron	5	2
Phoubars	4	2
Old Timers	4	3
Dirty Sox	3	3
Pop Ups	2	2
Gnats	0	5

BROOKHAVEN LEAGUE

MONDAY

Old Timers 13 Potsareebies 2

TUESDAY

Biology E.O.A.
Postponed.

WEDNESDAY

Untouchables Electronics
Rained Out. Rescheduled Monday, June 19.

THURSDAY

Health Physics 7 Medical 2

SMALL BORE RIFLE TOURNAMENT

Last week Al Lukas set a new record with an astounding 230. Judd Diener was second with 215 and Roy Domish was third with 196. It is still not too late to come and join the fun. Matches are held on site every Thursday at 5:30. Call Roy Domish, Ext. 2468 for details.

UPTON RIFLE AND PISTOL CLUB

Pete Colombo won the 1961 Large Bore Tournament with an average score of 188.5 out of a possible 200. J. Diener was second with 188.25 and Roy Domish was third with 186.

Our small bore tournament is under way. There is still plenty of time for late commers to join the fun. Contact Roy Domish, Ext. 2468.

CLASSIFIED ADS

FOR SALE

1954 PLYMOUTH - r&h, needs ring job. Will sell entire load or piecemeal. Best offer. O'Donnell, Ext. 593 or 2128.

1957 OLDSMOBILE - Fully equipped, \$650. Sonny, Ext. 2154.

1951 PLYMOUTH - 4 dr., excell. cond., new tires, \$150. Ext. 541.

1954 MG Model TF - Green, good cond., wire wheels, one year old top, 2 new tires, asking \$900. E. Degenhardt. Ext. 373 or BR 3-2250.

1953 MERCURY - Autom. trans. (available about July 21) and TV set. Owner leaving country. D. Heymann, Ext. 607 or 724.

1950 PONTIAC - '52 engine, std. shift, new battery, generator and tires. \$125. T. Schreiner, Ext. 2406.

1940 DODGE - running cond., recently inspected. Good inexpensive local transportation. Ext. 773.

1956 CHEVROLET STATION WAGON - \$350. Ext. 408.

1951 WILLYS SUBURBAN - 4 cyl. with overdrive. Engine overhauled last yr., brakes this spring. Runs well. \$150. Ext. 434.

HOUSE - E. Patchogue. Brick, 3 bedrms. with abundant closets, extra hall closets, lg. liv. rm. with oversized fireplace, din. rm., modern kitchen with dishwasher and wall oven. Finished basement rm. garage 30 ft. long. Lot 100x125. Excell. lawn and landscaping. No through traffic, near school. \$19,000. Shapiro, Ext. 397 or AT 6-8911.

HOUSE - Brookhaven, 120x120 corner lot. 2 bedrms., den or 3rd bedrm. Living rm. with fireplace, kitchen, dining area. Many extras. Ext. 746 or AT 6-0859.

1960 30 FT. YAWL - auxil. yawl, ss rigging, dacron sails, fibreglass on marine plywood hull, and cabin. Full headroom, fast, sleeps 6 in 3 sep. compartments. Best offer or trade for smaller boat or real estate. Ext. 2324.

16 FT. RUNABOUT - 2 ft. shock mounted motor extension (18 ft. total). Plywood hull completely fibreglassed. Windshield, all remote controls, high freeboard. 1955 Evinrude, 25 h.p. Elec. start, like new. Cruise-a-day gas tank and extras, \$500. Anderson, Ext. 2254 or JU 1-7854.

BOAT - with motor. 15½ Lyman lapstrake, 5 ft. beam, excell. cond., with 18 h.p. Evinrude outboard motor and controls, front steering wheel, accessories. For inspection, call Ext. 2263, or AT 6-8215 eves. or weekends.

15 FT. RUNABOUT - fibreglass with 35 h.p. elec. starting Johnson outboard. Forward steering. 1958, but only used 1 season. 40 hrs. total use. Full canvas cover, fuel tank, new uphols., lights, excell. cond. Cost \$2300, price \$1000. AT 6-8744.

22 FT. CENTURY RAVEN - 1958 Lapstrake skiff. 135 h.p. Gray Marine eng. Navy top. Ship to shore radio-tel. 2 forward bunks w. forward hatch cover, head, lights; bunk and seat cushions, many extras. Tows 5 adult skiers. Ideal for off shore fishing. Cond. like new. Orig. cost equipped \$7200, price \$2850. AT 6-8744.

RIFLE-SCOPE - Weaver K-10 with split ring mts, like new, \$40 (without mts, \$35); BC-453 Receiver, 190-540 kc., noise-limiter, RF and AF gain controls, \$17.50; 1884 Springfield Rifle, 45-70 cal., refinished stock and polished action, bore, good cond., \$20; HRO-M Amateur Receiver, one set of coils (Type J-B) completely rebuilt and refinished, new S-meter and noise limiter, \$50. P. Buhl, Ext. 354.

GARDEN FURNITURE - 2 aluminum chaise, \$8 & \$12; webbed porch furn., chaise with 2 chairs, \$8; beach umbrella, \$3; dinette, rocking chair, twin bedsprings and mattresses, 1 foam rubber; baby crib; shoes, Winthrop, new and like new ones, size 12c, \$5-\$10. SH 4-3788.

FOUND

FOUND - Cigar holder, Pearl earring, Gold tie clasp, and Rhinestone clip. Found at the dance.

TAN RAINCOAT (Alan Edwards) - Ladies white gloves. Silver pin in shape of a feather. Call Personnel Services, Ext. 2107.

WANTED

HOUSE - 3 or more bedroom house for occupancy July 1. Preferable in Yaphank vicinity. T. Moran, Ext. 564.

WOMAN'S LIGHTWEIGHT BICYCLE - Gear-shift, good condition essential. Harbottle, Ext. 625.

BASSINET - clean, good condition. HR 3-2568, or Ext. 301-93.

VOLKSWAGEN - 1957, 58, 59, perhaps 1960. W. Link, Ext. 321 (leave message) or call SH 4-3181.

CHILDREN'S EQUIPMENT - two 39 in. twin size mattresses; play gym, youth chair. AT 6-0656.

PHONOGRAPH - Portable with good tone. Also, portable AM/FM radio. Alan Kemp, Ext. 2536 or 524.

35 MM. SLIDE PROJECTOR - and screen. Portable typewriter. P. Coppens, Ext. 650 or AT 9-1091.

CAR POOLS

Driver wishes to join carpool from Queens or environs. H. Kramer, Ext. 624.

Two drivers wanted to join established pool from Nassau County daily. Degree not required, females preferred. O'Donnell, Ext. 593 or 2128.

Car pool desires other driver from vicinity of Maple Ave. Shopping Center or Rt. 111-Smithtown Bypass. Bob Doering, Ext. 779.

Looking for more drivers to join car pool from Bayport. H. Pfister, Ext. 2128.

Wish to join car pool from Patchogue - Roe Blvd. area. Ext. 472..

Very dependable, capable woman driver wishes to have other women riders. I will do all driving. Riders wanted from anywhere along following route: Leave Hicksville (exit 35, No. State Pkwy.) 7:00 a.m. sharp, to Veteran's Highway, to Sunrise Hgwy, to Medford Ave. to Montauk Highway, to Lab. Ext. 2327.

Need ride from Patchogue, south Rider Ave. B. Alburty, Ext. 2106.