

the Bulletin Board

VOLUME 14 - NUMBER 42

Published by the BNL Personnel Office

JUNE 27, 1961

EXTENSION TO AEC BUILDING

An extension to the Brookhaven Area U.S.A.E.C. building on Bell Avenue is presently being completed. This addition will approximately double the present office space of 4,000 square feet. It will help to relieve the somewhat crowded working conditions in the present building. In addition, the New York Operations Office Patent Group move Operations Office Patent Group will move into the building from their present quarters on Brookhaven Avenue.

The extension, like the present building, will be a single-story structure, of concrete block construction. The construction contractor is Magee Construction Company.

The building is scheduled for completion early in September.

A SAFE, SANE & LEGAL FOURTH

"Bootlegged" fire crackers will be coming into New York this year as in past years. Some bootleggers will be caught, most will not. The best possibility of enforcement lies with parents. It is usually the parent who buys the fire crackers and brings them across the state line for his children to "play with."

The number of children who have been blinded and/or burned by these explosives runs into the hundreds of thousands; those killed amount to over five thousand. Even the "harmless" sparklers burn at a temperature of 1650 degrees F! (3 times hotter than the kitchen stove - not a very nice toy for children!).

Satisfy the urge of your children (and yourselves) by taking the family to one of the many professional fire works displays in your area. They are much prettier, louder and a lot safer!

BERA FISHING CONTEST

John Pontieri took the honors in May with a 1 lb. 12 oz. yellow perch, caught in Yaphank Lake. The brute was worth 437 points. Next best was Bob Hoheb with a 2 lb. 12 oz. flounder from Gardiners I. worth 344 pts.

There were 18 fish entered during the month. Entries for June are scarce and low in points, so get your entry in. Fluke are in Moriches and Shinnecock Bays. A 15 pounder was caught in Moriches. Small blues at Shinnecock Inlet and the Canal.

THREE EMPLOYEES TO RETIRE



Shown left to right: Emil J. Harenberg, George C. Morrin, William Sukov.

June 30, 1961 marks the retirement of three BNL employees: Emil J. Harenberg, George C. Morrin, and William Sukov.

The most senior in terms of length of service is Emil J. Harenberg of the Cosmotron who came to the Laboratory in 1948. William Sukov of the Central Shops started here in 1949, and George C. Morrin, also of the Cosmotron, joined the Laboratory in 1951.

On behalf of all BNL employees, we wish them good luck and happiness in their retirement.

INDEPENDENCE DAY HOLIDAY

Tuesday, July 4, 1961 will be observed as a regular Laboratory holiday. Since shift checks will not be ready on Wednesday, shift employees who normally receive their checks on that day may have them mailed to them on Thursday, July 6 if they will leave their name, life number and address with the Cashier not later than July 3.

Due to the short work week, supervisors of weekly employees are requested to deliver time cards to Payroll by hand rather than the interoffice mail distribution before noon, Monday, July 3.

VISITORS TO BNL

A group of 27 students at New York University who are taking a course in Radiation Training visited the Laboratory on Monday, June 26. On Tuesdays, June 27, 30 participants in an Isotope Course at Mount Sinai Hospital attended lectures here. Both groups were given general tours of BNL with emphasis on their special interests.

BNL RECEIVES 2ND A.E.C. AWARD

The Atomic Energy Commission has recently presented the Laboratory with its second "Award of Merit" for again exceeding one million man hours of work without a disabling* injury.

The most recent award is for operating 1,051,960 man hours without a disabling injury and covers the period from December 14, 1960 to March 1, 1961. The plaque will hang in the cafeteria next to other Laboratory safety awards.

Once again the importance of this achievement is not the plaque or the recognition by the A.E.C., but is the realization that during these periods of time some unknown number of fellow employees continued to work safely rather than suffer a serious work injury.

*Per American Standard Association Z16.1

BNL SAFETY RECORD

38 Days Since Last Disabling Injury
(May 19 - June 25)

SEAT BELT DELIVERY

The supplier of the automobile seat belts which may be obtained through Personnel Services, has advised us that delivery of belts has been held up due to a manufacturer's shortage of hardware. Delivery to those who have ordered belts will be made shortly.

OLIVER SCHAEFFER DISCUSSES METEORITES AND COSMIC RAYS

Dr. Oliver Schaeffer gave the last lecture of the present series of Brookhaven lectures. He gave a popular account of the history and origin of meteorites within the solar system. These bodies originated as fragments of colliding asteroids, or small planetoids, that are rotating around the sun with highly elliptical orbits between Mars and Jupiter. Dr. Schaeffer explained that the time of breakup of the planetoid could be measured by determining how long the fragment - meteorite - had been exposed to cosmic radiation. This was accomplished by measuring the rate of production of a particular radioactive isotope of chlorine - Chlorine-36 - and the total amount of accumulated decay product - Argon-36.

Measurements on a number of meteorites showed that these fragments had been formed by collision as long ago as 560 million years, and others only 20 million years ago. Dr. Schaeffer explained how radioactivities in meteorites could be used to check on whether the cosmic ray intensity has been constant in the distant past. The measurements show that cosmic rays have remained at their presently observed intensity during the last 100,000 years.

Studies were also made of the spatial constancy of cosmic rays in the solar system by measuring short-lived radioactivities. For this purpose the meteorite must be studied in the laboratory right after its fall. The stony meteorite, Hamlet, that fell in Indiana on October 12, 1952 was studied, from which it was concluded that the intensity of cosmic rays is constant within the solar system.

The lecture series will start again next fall. Laurie Miller of the Instrumentation & Health Physics Department will tell us of new developments in particle detectors.

DON'T GET LEFT BEHIND

Persons wishing to take the 3:55 p.m. Laboratory vehicle to the Yaphank train station are requested to notify the receptionist in the Administration Building, Ext. 2131, BEFORE 3:30 p.m., in order that sufficient space is available.

BE AN EARLY BIRD

Tickets for Operation Get-Together No. 4 will go on sale Friday, June 30, and end July 22. Tickets are available for employees and immediate family (family members residing with the employee only!!). No guests will be permitted at the picnic. Tickets are not transferable. Adults \$1.50; Children (under 18) - \$.25; Infants free.

There will be ticket sellers in each group and department. A complete list will appear in next week's BULLETIN BOARD.

Don't run the risk of disappointing your family and missing a wonderful time. Get your tickets EARLY!

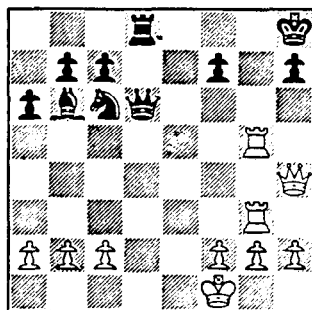
DISCOUNT TICKETS

Discount tickets to the following shows and plays are currently available at Personnel Services, 58 Brookhaven Avenue:

MY FAIR LADY
(Mark Hellinger Theatre, N.Y.C.)

PARADISE ISLAND
(Jones Beach Marine Theatre)

WESTBURY MUSIC FAIR
(Current attraction - SHOW GIRL.
Next attraction - THE VAGABOND KING)

CHESS PROBLEM

In this week's problem it is white's move. White has to be careful because Q - B8 means mate. So, what to do? Answer elsewhere in this week's BULLETIN BOARD.

GYMNASIUM

The gym will be open for evening activities during the months of July and August beginning Monday, July 3rd. Each evening will be scheduled for "General Activity" - badminton, basketball, table tennis, volleyball, exercise, etc. . . The facility is equipped with mens and ladies' locker and shower rooms. Soap is provided and towels can be rented.
Open Mon., Tues., Wed., Thurs. to 9:30 p.m.

OPERATION GET-TOGETHER NO. 4

This year's picnic promises to be bigger and better than ever. The day will be filled to overflowing with contests, rides, music, dancing, refreshments, cartoons, prizes and fun for all.

To keep in step with the creeping suburban intellectualism of our society, the following special contests (to be judged by experts in each field) will be offered:

Beatnik Contest - Child or adult dressed as the most authentic Beatnik will be honored with a prize.

Crazy Painting Contest - Paint anything (and we do mean that) - modern art, futuristic art, anything you think is art. You paint it - we'll display it - and award a prize.

Group Singing Contest - Barber shop quartet, choir or an original group - as long as you can carry a tune, you are eligible.

Watch THE BULLETIN BOARD each week for more information on the BERA picnic, July 29, beginning at 1 p.m.

FOLK DANCE GROUP

The Brookhaven Folk Dance Group will not meet next Monday, July 3. For the remainder of July the group will hold its usual folk dance sessions on Monday nights at the Recreation Hall from 8 to 10:30 p.m. For the benefit of beginning dancers the first half of each evening will be given over to elementary instruction.

THEATRE GROUP MEETS

There will be a general meeting of the Theatre Group Wednesday evening, June 28, promptly at 8:00 p.m. in the Recreation Hall. Election of officers for the coming year will take place. Refreshments will be available. All members and others who are interested are urged to attend.

The candidates for office are as follows:

President - JERRY SADOFSKY, JIM POWELL
Vice President and Treasurer -

ED LOESER, CARL GOODZEIT
Secretary - RITA STRAUB, VALERIE HUGHES

Chairman of the Theatre Committee -
ED NIELSEN, FRED THOMPSON

Chairman of the Advisory Committee -
GORDON DANBY, CLIFF SWARTZ

Chairman of the Program Committee -
GINNY SAYRE, BERTHA KUGELMAN

Others may be nominated from the floor.

RECREATION BUILDING

The Recreation Building will be open Monday through Friday evenings from 5:00 p.m. to 11:00 p.m. during July and August.

TENNIS TOURNAMENT

The 1961 BNL Tennis Tournament is about to get under way. Entries are now being accepted. Contests will be held in men's singles, ladies' singles, doubles and mixed doubles if enough entries are forthcoming. Competition will start the week of the 17th.

Deadline for entries will be Thursday, July 13.

A tournament fee of 50¢ must accompany EACH entry. (Make checks payable to BERA).

Participants will be scheduled to play one match per week at a mutually agreed upon time and day.

Name Ext.

Check tournaments you wish to enter:

- ☐ Men's Singles
☐ Men's Doubles

(Partner..... Ext.)

- ☐ Ladies' Singles
☐ Mixed Doubles

(Partner..... Ext.)

Mail or bring application to Recreation Office, 3 Center St.

BROOKHAVEN DIVERS CLUB

A special meeting of the Brookhaven Divers Club will be held on Thursday, June 29, 1961 at 8 p.m. in the Skin Divers Club Room in the Recreation Building. The annual club dive at Block Island scheduled for early August will be organized at this time. All persons interested in participating, please attend. For further information contact Jean Lauer, Ext. 2390.

POOL SALE

No! We are not selling the pool - just bargain-priced season tickets. From now to the end of August you and the family can swim for \$10. A single season employee ticket is only \$5. Purchase at the pool office.

SUMMER FILM SERIES

The Summer Film Series will begin on Thursday, July 6, at 8:30 p.m. at the Lecture Hall. A film will be shown every Thursday through September.

The first presentation will be "Little Fugitive."

MISS BNL TO BE NAMED

Who will be "Miss BNL 1961"? Have any ideas? This question will have everyone guessing at the Big Picnic this year. This year BERA is sponsoring a beauty contest to find "Miss BNL." Who in your department is entering? Already several departments and clubs are sponsoring their choice for "Miss BNL." Don't wait. Get your group to enter one of the gorgeous females on site!

Contest Rules

1. Entrant must be a BNL employee (per BERA definition) - married or single.
2. Entrant may be sponsored by any organized group, department, recreational activity, (such as Miss Phoubar, Miss Personnel, Miss Critical Assembly, etc., etc.) or may be an individual applicant.

3. Entrants (or sponsor) must file application (signed by entrant) before July 16, 1961. Send applications to George Sabine, Recreation.

4. Entrant does not have to work in the department or be affiliated with the sponsoring organization.

5. Entrant will be judged in a bathing suit at Operation Get-Together (bathing suit to be entrant's choice).

6. Entrant will be judged on appearance and poise only.

7. First place winner will receive a cup and full "Miss BNL" privileges for 1961. There will be two runner-up trophy winners.

Contest will be judged by a battery of well-known personalities including Miss Rheingold 1961, top name stars of stage, screen, and radio, and BNL notables. Get going, guys - Get the girls out to enter - Now!

Application for Miss BNL 1961

Name of Applicant

Department

Sponsor (if any)

Title of Applicant

Signature of Applicant

Send Application to G. Sabine, Recreation

SWIM CLASS

This Friday is the deadline for registration in our children's swimming program which will get under way the week of July 10. Sign up now - applications and information at the Recreation Office.

RECREATION OFFICE HOURS

MONDAY THROUGH FRIDAY
 11:30 a.m. - 12:30 p.m.
 4:00 p.m. - 5:00 p.m.

LOCKER REGISTRATION

All locker registrations at the Gymnasium and Swimming Pool expire as of June 30. If you wish to keep yours - please re-register for it at the Recreation Office.

SLO-BALL**National League**

MONDAY: Metallurgy 20, Pop Ups 19; Quote "A comedy of errors" Unquote. Phoubars 21, Untouchables 13.

TUESDAY: Old Timers 8, Metallurgy 6. Skelly Frei's hitting, coupled with some good fielding, gave the old men a much needed win. A well played game.

WEDNESDAY: Dirty Sox, Cosmotron; Rain.

THURSDAY: Pop Ups 13, Gnats 6.

Brookhaven League

Last week's results.

MONDAY: Untouchables 12, Phoubars 24; Untouchables 14, Electronics 13.

TUESDAY: Medical 36, E.O.A. 6.

WEDNESDAY: Health Physics 24, Pots-areebies 30.

THURSDAY: Biology 14, Electronics 10.

FOR SALE

1955 RAMBLER - deluxe station wagon, r&h, A-1 condition. Call JUniper 1-8271.

1955 MERCURY CONVERTIBLE - r&h, auto. trans. New tires, top. 38,000 mi. Orig. owner. \$600. M. Smilay, Ext. 301-30.

1940 DODGE - running condition, recently inspected. Good inexpensive local transportation. Ext. 773.

1958 LAMBRETTA - \$150. Fully equipped. Ext. 301-23.

1951 STUDEBAKER COMMANDER - 4 door, r&h, new carb., fuel pump, etc. Dependable, \$40. Clive Reed, Ext. 2182.

1953 FORD VICTORIA - r&h, auto. trans., Ext. 2369.

1956 MERCURY - 2 door sedan, 33,000 miles. Very good condition. Price \$595. Ext. 339, Ed Zeidler.

1960 OLDSMOBILE - 4 door, all power, perfect. Ext. 423.

TWO-BEDROOM HOUSE - East Patchogue, expansion attic, oil-hot water heat, city water, Bay side of South Country Road. Ext. 752 or GR 5-0043 week-ends and after 6 p.m.

HOUSE - E. Patchogue. Brick, 3 bedrms, many lg. closets, lg. liv. rm. with fireplace, din. rm., modern kitchen. Finished basement room, garage 30 ft. long. Lot 100x125. Excell. lawn and landscaping. No through traffic, near school. \$19,000. Shapiro, Ext. 397 or AT 6-8911.

1940 PLYMOUTH - Runs ok. Available July 7. \$50 or offer. John Swan, Ext. 797.

1952 PONTIAC - r&h, hyd., new tires. \$95. Irv. Lipton, Ext. 2430.

HOUSE - Mastic, 8 mi. from Lab. Six rooms, hot water heat, 80 x 100 fenced in plot. Sacrifice. \$10,500. AT 1-8532.

HOUSE - quiet residential area. On landscaped plot 75 x 186. Large shade trees, 3 bedrooms, sunporch, tiled bath, oil heat, combination windows and doors. Near school and village. Senix Ave., Center Moriches. \$9,000. AT 4-0375 after 6 p.m.

RANCH HOUSE - Three bedroom custom built, located in the Incorporated Village of Shoreham. Private beach, tennis courts, excellent schooling. \$22,500. SH 4-3401.

RANCH HOUSE - Custom, Patchogue, 3 bedrooms, 29 ft. living room, knotty pine kitchen, and dinette with glass doors to outside patio, 2 ceramic tile bathrooms, 2 car garage, oil hot water baseboard heat, aluminum storm doors & windows, cornices, full cellar. AT 9-1741.

HOUSE - Beautiful 7 room split level on ½ acre wooded lot, excellent neighborhood, private beach rights, 3 bedrooms, 1½ baths, laundry, large living room plus 26 ft. recreation rooms, fireplace, landscaped. SH 4-9877 evenings.

BEACH BUGGY - 1950 Willys Station Wagon. 800x15 tires, r&h. Large canvas-covered roof box, good cond. Joe Balsamo, Ext. 600.

1958 17 FT. CRUISER INC. - Runabout 50 horse power, Johnson Motor. Fully equipped, ready to go. Can be seen weekends at Elm Road, Elder Drive, Mastic Beach. A. Pace, AT 1-8166.

CLASSIFIED ADS

BOAT - 19 ft. Shelter Cabin Inboard. 60 h.p. Chris Craft engine. \$850. Fully equipped. GR 5-5194.

32 FT. CABIN CRUISER - Custom built in 1959. 10 ft. 6 in. beam, 3 ft. draft. Sleeps 5. All stainless steel and formica galley. 175 h.p. Chris-Craft Marine engine w/2:1 reduction gear. Fresh water cooled. Fully equipped, including S/S 65 Watt and Depth Finder, 8 ft. dinghy with 1960 3 h.p. Johnson outboard. Many other extras - must be seen to be appreciated. Will sacrifice for any reasonable offer. Ext. 416 or SE 2-3296 after 6 p.m.

10 FT. SAIL SCOOTER - 45 square ft. red nylon sail. Everything in good to excell. cond. Can be seen in East Setauket on Coach Road 100 yards south of 25A. Asking \$125 cash. R. Isler, Ext. 649 or XH 1-4696.

15½ FT. LYMAN RUNABOUT - Evinrude motor and controls, front steering, extras. R.A. Beth, Ext. 2263, or AT 6-8215.

CABIN CRUISER - Custom Built, 16 ft., 25 h.p. outboard. Hull completely fiberglassed up to mahogany decking. Electric starting with remote steering and shift, completely furnished in every detail including Danforth anchor, running & cabin lights, fire extinguisher, compass, bilge pump, 2500 \pm Test Nylon Lines, canvas tarp., etc. Boat and motor less than 2 years old. Price \$1200. Ext. 2376. After 6:30 p.m., GR 5-4946.

EXPRESS CRUISER - 23 ft. Chris Craft, 130 h.p. Chris Craft Engine, good cond. \$2200 including mooring and many extras. Can be seen in Port Jefferson Harbor. Ready to go, family boat, fishing boat. Ext. 574, or HR 3-1435 after 6.

CHEVROLET WHEELS - 14 in., two; 800x14 in. tires used, two. All for \$12. Frank Rumph, Ext. 2221.

CHAISE LOUNGE - good cond. \$35. Margaret Greene, Ext. 779 or AT 6-0237 after 5:30 p.m.

BEDS - 2 sing. \$15. 1 double with chest of drawers, \$10. File cabinet, \$30. High chair, chrome, \$5. Baby bed, \$15. Large book case, \$20. 18 in. Lawnboy mower, very good running cond., \$35. AT 9-1413 or AT 9-0706.

PIANO - Steinway upright, \$350. 1941 Cadillac, \$110. Kitchen table, \$10. Dressers \$10 each. Available also in August - refrigerator, wash. machine, TV, sofa-bed, assorted furniture galore, must sell, moving to Hawaii. Brewbaker, Ext. 2259 or YA 4-3719.

1956 PLYMOUTH STATION WAGON - V8. \$525. Turntable Rek-O-Kut, Fairchild arm, G.E. pickup with base. \$70. Ext. 2123 or AT 4-1066.

1958 EVINRUDE - Like new, \$125. Chuck Rappe, Ext. 792.

WURLITZER - 120 bass Accordion. 4 treble switches. In good condition \$100. AT 6-0286.

PLATFORM ROCKER - upholstered with ottoman and slipcover \$25.; large child's wagon \$4.; 3 army cots \$2. each; set of dishes suitable for summer camp \$5.; bathroom scales \$2. AT 6-1145.

REFRIGERATOR - Frigidaire, 9 cu. ft., very good cond. M. Smilay, Ext. 301-30.

SERTA BOX SPRING - 72 x 38 in. and "Knickerbocker" adjustable steel frame on casters. Suitable for foam mattress. 1 year old. As good as new. \$20. Fischer, Ext. 618.

FOR RENT

HOUSE - Patchogue, 3 bedrooms, enclosed porch, open porch, living room, dining room, kitchen, bath, large basement, etc. \$90. per month. J. Kane, Ext. 2218 or Wm. Underwood, GR 5-3600.

LOST AND FOUND

FOUND - silver ring at swimming pool. Personnel Services, Ext. 2107.

FOUND - car key in case, found near Building 475. Call Personnel Services, Ext. 2107.

FOUND - man's wristwatch with black band. Personnel Services, Ext. 2107.

LOST - has anybody seen BNL Library copy of "High Voltage Lab Techniques" by Craggs & Meek? Please call R.A. Beth, Ext. 2263.

WANTED

WASHING MACHINE - in reasonably good condition for a reasonable price. Feinendegen, Ext. 301.

TEACHER - Nursery school teacher. Half-days starting in September. Training and experience in Early Childhood Education necessary. GR 5-4591.

BELT SANDER - 2 or 3 inch size. Ext. 778

STEAMER TRUNK - Battered but good for one Atlantic crossing. Ext. 367.

HOME FOR DOG - 4 year old male mongrel, good watchdog, good with children and well trained in the house. AT 6-1145.

OUTBOARD MOTOR - up to 3 h.p. Ext. 423.

AUTOMATIC WASHER - second hand, preferably Westinghouse Laundromat! Also Mixer. W. Linde, SH 4-3181 or Ext. 2410.

SOFTBALL PLAYERS - any summer students interested in forming a softball team. Contact Harvey Huttas, Ext. 772.

CAR POOLS

Ride wanted from Colony Drive and Montauk Highway. West Sayville. D. Zelem, Ext. 639.

Want carpool members for the Port Jefferson Harbor Hills Area. L. Green, Ext. 2546.

Want member for carpool. Bellport Village to BNL. Ext. 665.

Want to join carpool from North Massapequa or vicinity. Will drive in turn. H. Huttas, Ext. 752.

Would like to join or form carpool from Commack-Deer Park Area. Ext. 624.

Want to join or get rides to Lab from area South of Skyliner Diner, Patchogue. Ext. 2212.

ANSWER TO CHESS PROBLEM

White wins with . . .

WHITE	BLACK
1. R - Q5	Q x R
2. Q - B6 mate.	

or

1. R - Q5	Q - K2
2. Q x Q etc., etc.	