

the Bulletin Board

VOLUME 14 - NUMBER 47

Published by the BNL Personnel Office

AUGUST 1, 1961

BNL STAFF MEMBERS FEATURED IN SUNDAY PAPER

Readers of THE SUNDAY REVIEW, a Suffolk County newspaper started early this year, will have found in the Magazine Section a series of extremely readable articles on BNL personalities. To date, the following people have been featured: Messrs. Goudsmit, Halama, Higinbotham, Puleston and Quastler. The gifted author of these delightful profiles is Mrs. Norval Dwyer of Wading River, wife of Dr. O.E. Dwyer of Brookhaven's Nuclear Engineering Department. Since the Laboratory is a practically inexhaustible source of unusual and interesting individuals with varied backgrounds and from many walks of life, it is hoped that Mrs. Dwyer will be able to continue publishing this series.

SAFETY RECORD REPEATED

FOR THE THIRD TIME in little more than a year, the Laboratory has operated more than a million man hours without a disabling injury! A conservative estimate (until actual hours become available) reaches one million on July 23rd, and at this writing the current period is continuing without a chargeable disabling injury.

Repeating three times in so short a period assumes special significance since there is no record of the Laboratory's having reached a million before last year. The real significance of these safety statistics, however, is with the members of the staff - whoever they are - who were not injured.

VISITORS TO BNL

Tuesday, August 1: National Science Foundation Summer Institute, University of Pennsylvania, 11 teachers.

Thursday, August 3: N.S.F. Summer Institute in Chemistry, 41 high school teachers from Adelphi College.

Friday, August 4: N.S.F. Summer Institute in Radiochemistry, 28 high school and college teachers.

DISCOUNT TICKETS

FIORIELLO

Broadway Theatre, N.Y.C.

Available at Personnel Services,
58 Brookhaven.

AUI CELEBRATES 15th ANNIVERSARY

Associated Universities, Inc., which operates Brookhaven National Laboratory under a contract with the U.S. Atomic Energy Commission, was incorporated on July 18, 1946, under the Education Law of the State of New York. This summer, therefore, marks the fifteenth birthday of the corporation.

The idea of Brookhaven National Laboratory grew out of the conviction of a group of eminent scientists that adequate facilities for nuclear research on a scale impractical for single institutions should be provided in the northeastern part of the country, where no such facilities had been developed during World War II. This group received a favorable response from the Manhattan Engineering District, and in the course of extensive preliminary discussions, it was generally agreed that these research facilities should be freely available to scientists, that cooperation by scientists and scientific institutions could best be assured by establishing a Laboratory in which there would be relatively complete freedom under a university-type management, and that a cooperative university group set up for the express purpose of managing such a Laboratory would be more effective than a single university.

Associated Universities, Inc. was the natural outgrowth of these discussions. Its organization has unusual features. It is sponsored by nine major universities, namely Columbia, Cornell, Harvard, Johns Hopkins, Massachusetts Institute of Technology, Princeton, Pennsylvania, Rochester, and Yale.

After incorporation and throughout the remainder of 1946, the AUI Trustees and Officers laid the groundwork for the operation of BNL: this involved choosing a site, hiring personnel, and outlining the initial research program. Since the Laboratory began to function early in 1947, the AUI Board of Trustees has been active in the development of policy and in the guidance of the Laboratory's program.

During 1954 and 1955, the Corporation became involved in a new project, which developed into the National Astronomy Observatory at Green Bank, West Virginia (See BULLETIN BOARDS of January 24 and February 7, 1961). AUI has operated NRAO since its opening in 1956, under a contract with the National Science Foundation.

In addition to these responsibilities, AUI has also been involved in several shorter-range projects over the years. One of these was PROJECT EAST RIVER, a comprehensive study of the civil defense requirements of the United States in the atomic age. This study, sponsored by the Department of Defense and two other agencies, was started in 1951 and completed in January 1953.

The first President of AUI was Mr. Edward Reynolds, the Administrative Vice President of Harvard University, who served in this post from 1946 to 1948. He was succeeded by Mr. Frank D. Fackenthal, who had been Acting President of Columbia University from 1945-48. Mr. Fackenthal was President until 1951, when Dr. Lloyd V. Berkner was elected to the office. Dr. Berkner resigned in December 1960, to become President of the Graduate Research Center of Dallas, Texas.

Following Dr. Berkner's resignation, Dr. Leland J. Hayworth, then Director of BNL, served as President of the Corporation on a temporary basis, until he resigned to become an Atomic Energy Commissioner in April of this year. Mr. Edward Reynolds then became President on an interim basis, until the appointment of Dr. I.I. Rabi on April 21, 1961. Dr. Rabi, Professor of Physics at Columbia, was one of the incorporating Trustees of AUI in 1946. (Continued)

AUI Celebrates — Continued

Each of the nine sponsoring universities nominates two members of the Board of Trustees, which is now the governing body of the corporation. Of these two, one is required to be a principal administrative or corporate officer of the university. The other is customarily a scientist eminent in one of the fields in which BNL research is carried forward. These nominees are designated University Trustees. When the prospect of managing a second installation, the National Radio Astronomy Observatory, appeared, it was decided to enlarge the Board by the addition of three Trustees-at-large, who are chosen by the University Trustees. All Trustees in these two categories are elected for three-year terms, and the Board is divided in such a way that the terms of office of one-third of its number expire each year. In addition, the board at any annual meeting may elect not more than three Annual Trustees, who serve for terms of one year. The President, if not already a Trustee, becomes one ex officio on his election.

As indicated above, all powers of the corporation are vested in the Trustees. The Board elects the officers of the corporation and fills vacancies which occur in its own number. The By-laws provide for an annual meeting and such other meetings as the Board may determine should be called.

Over the years, a pattern for meetings has developed. The annual meeting is held in October of each year. Beginning in 1957, the annual meeting has been held at the National Radio Astronomy Observatory in Green Bank, West Virginia. The full Board meets again in January and in April, usually at Brookhaven. The Executive Committee, which in the intervals between the meetings of the Board of Trustees has immediate charge of the affairs of the corporation, meets each month with the usual exception of August.

The Board of Trustees plays little direct part in the day-to-day work of the corporation, which is carried on at its two installations, the large one at Brookhaven, and the much smaller one in Green Bank, West Virginia. The operation of each of these institutions is the responsibility of its Director, who is chosen by the Board and who is charged with the duty of carrying out the policies laid down by the Board. The Directors report regularly and at length to the Trustees. Major staff appointments are submitted to the Trustees for approval. Annual budgets are approved by the Trustees before being submitted to the two sponsoring Government agencies, the Atomic Energy Commission for Brookhaven, and the National Science Foundation for the Observatory.

NEXT WEEK: "Introduction to AUI's Board of Trustees."

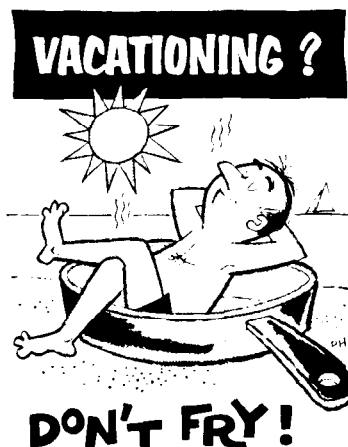
HOLD THE PHONE. . .

As you know, by newspapers, radio and other publicity, there has been a tremendous nation-wide seat belt program instigated by the Federal Government. All seat belt manufacturers and their suppliers of material were literally swamped with orders. Due to the great demand, delivery will be delayed about one to three weeks. Please be patient.

FAMILY PASSES

All employees are urged to obtain long term passes for members of their immediate families if such members will use the recreation areas without the employee being present.

Members of immediate family include husband, wife, children over 13 years of age and other relatives who reside in the employees home. A memo of request to the Security Office is sufficient.

**ATTENTION - ARTISTS, SUNDAY PAINTERS, AND DABBLERS IN THE ARTS**

Undeniably, the BNL staff is a veritable goldmine of many talents, hobbies, and extracurricular interests. Outstanding among these is the artistic urge, which so far has been hidden under the proverbial bushel. In recognition of this lack of opportunity for employees to display their handiwork, BERA is in the preliminary stages of planning an art exhibition, to be held in early February, 1962. The exhibit will be open to all employees and members of their immediate families; entries will be limited to two works per individual. Included will be paintings, drawings, sculpture, modeling, montages and ceramics.

The primary aim of the exhibition is to provide a means for displaying the varied artistic efforts of BERA members; it is NOT a contest, so there will be no votes, awards, prizes or selection committees. Everyone, however modest he may be about his talents in this direction, is encouraged to show his work.

Watch future issues of THE BULLETIN BOARD for further announcements, and in the meantime, dust off the brushes and easels, and prepare to give your fellow employees an unforgettable artistic treat.

BERA FILM SERIES

THURS., JULY 3 - 8:30 P.M. - LECTURE HALL

END OF INNOCENCE, from Argentina, directed by Leopoldo Torre Nilsson.

This critical success at Cannes was based upon a novel, "The House of the Angel," by Beatriz Guido, one of the foremost Latin American novelists. It records with great understanding the adolescence of a 15-year-old girl in the 1920's. Raised in an atmosphere of stifling Puritanism by a pietistic and rigid mother who wishes her to grow up conventionally ignorant of the facts of life. She is aroused to break free when she meets a political-minded young man who is also a victim of his milieu. She is led by him from innocence to disillusion. Nilsson is a director who can achieve psychological portraits of real depth against backgrounds of social criticism.

UKIYO-E (Prints of Japan)

Twelve famous artists of the 17th and 18th centuries in Japan, the age of Ukiyo-e "pictures of the floating world," are presented through characteristic works from the collection in the Art Institute of Chicago. The camera does a remarkable job of showing details in the prints and then making a smooth transition to the fuller view, and of passing from one work to another.

BRIDGE PLAYERS - MASTER POINTS!

Duplicate bridge, Thursday, August 3 in the Recreation Hall. Master points will be awarded. 8:00 p.m. sharp.

SMALL BORE RIFLE TOURNAMENT

Last Thursday, Al Lukas again surpassed previous records by setting a new high of 233 out of a possible 250. Roy Domish was second with a score of 227 and Judd Diener was third with 215.

BROOKHAVEN LEAGUE

Standings, including week of July 24.

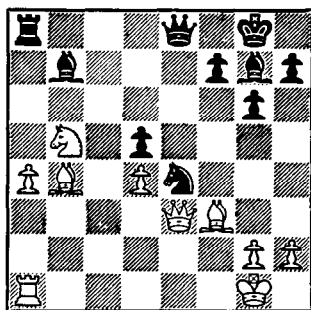
TEAM	WON	LOST
Biology	10	2
Medical	6	4
Electronics	5	6
Untouchables	5	6
Potsareebies	6	7
Health Physics	3	8
E.O.A.	1	9

DANCE TIME

Every Wednesday evening at the Recreation Building - 9-12 p.m. Refreshments available. Cost - just 50¢ to enjoy Frank Campbell's live combo.

CHESS PROBLEM

In this week's problem it is Black's move. The position is rather complicated and it would be good to study it first. Answer elsewhere in this week's BULLETIN BOARD.

**PROFESSIONAL OPENINGS AT BNL**

From time to time, THE BULLETIN BOARD lists job opportunities for which employee referrals are sought. At the present time there are openings at the Laboratory for Electrical and Electronics Engineers, and Mathematicians-Programmers.

If you know of anyone who might be interested in exploring these or other professional vacancies, notify P. Paige, Ext. 2100 or R.C. Anderson, Ext. 741.

**THE RAINS CAME**

And so did the crowds. Over 3400 persons attended Operation Get-Together No. 4 last Saturday and not even the weather could dampen the spirit of enjoyment and good-fellowship that prevailed. The Committee provided a sprinkler system to cover the entire area and even the adults enjoyed the food, dancing, games and contests in between the raindrops.

The West Sayville Drum and Bugle Corps provided an outstanding demonstration of their skill and the music throughout the afternoon was a delight to the ears.

The highlight of the day was the crowning of Miss BNL by Miss Rheingold. The lucky girl was Geraldine Mataragus, Miss Technical Information, who received a trophy and a huge bouquet of roses. Her official escort for the afternoon was Dr. Carsten. The runners-up in the Bathing Beauty Contest were Audrey Bangel, Miss Accelerator, and Rosemary Reichold, Miss Supply and Materiel.

Many people gathered in the gym while others stood on line for delicious hamburgers, hot dogs, corn and watermelon. The Carvel trucks were overwhelmed by the response of the children and the theatre was filled to overflowing for the Magic Show as was the Research Staff Lounge for cartoons.

All in all, 3400 people can't be wrong - Operation Get-Together No. 4 was a success and we're all looking forward to Operation Get-Together No. 5!

CLASSIFIED ADS

BULLETIN BOARD CLASSIFIED AD POLICY

1. Employees only may place ads in THE BULLETIN BOARD.
2. All items advertised for sale must be property of an employee.
3. Real estate ads will be accepted only when they involve change of residence by an employee, and are accompanied by a statement of ownership and change of residence.
4. No ads for business purposes will be accepted.
5. Ads must be submitted in writing (preferably typed) by 3 p.m. Friday for inclusion in the next week's newspaper. Address the ads to THE BULLETIN BOARD, 58 Brookhaven Avenue, or deliver them to the Personnel Office. Ads must contain a signature and Laboratory telephone extension. If you do not want your name to appear when the ad is printed, put it in parentheses.
6. Ads are run on a space available basis. If your ad does not appear due to space reasons, it will be held for inclusion in the next issue of THE BULLETIN BOARD.
7. If you wish to repeat an ad, it must be re-submitted.

FOR SALE

1951 FORD V-8 - Tudor, good cond. GR 5-5894.

1957 MGA - Red with black interior. Excell. cond., fully equipped. SH 4-3356 after 6.

1958 BUICK - Convertible, black, excell. tires, top. \$1295. Ext. 483.

1954 FORD - Station wagon Squire, 9 pass., r&h, Fordomatic, good running cond. \$395. AT 1-7344, 5-6 p.m.

1954 FORD - 4 door sedan, V-8 st. shift, new tires, good mech. cond., clean inter. Available August 8. Ext. 345 or GR 5-4532.

1958 VAUHALL - 4-dr., extra snowtires. \$450 firm. AT 4-0792.

1959 MGA - Blue, black top, Michelin "X" tires, S & W speed., vac. gauge, r&h. Excell. roadster for rally enthus. \$1,100. JU 8-4498 aft. 6.

HOUSE - 6 rm. custom built ranch in Inc. Village of Shoreham. Priv. beach, tennis courts, general store and school in easy walking distance. Quiet North Shore community. Listed at \$22,500. SH 4-3401.

HOUSE - E. Patchogue, 3 yr. old Calif. ranch. 3 bedrms., tile bath, wall oven in kitchen. Full basement studded. City gas and water. Alum. siding, storms, screens, jealousy doors. 80X100 ft. lot, rustic fence, corner. \$11,500. Whitey, Ext. 2179 or AT 6-9248.

BRICK RANCH - Custom built, 3 bedrms, fireplace, lg kitchen, full basement, 2 car gar., oil hot water heat, tile bath, patio, wall-to-wall carpeting, extras, \$900 down, 78.00 per month. AT 6-8712.

CAPE COD HOUSE - Shoreham, 4 bedrms, 2 full baths, 5 yrs. old. Finished attic, full rear dormer, 95'X125' fenced plot. 1½ car gar., finished basement with outside entrance to 16'X30' concrete patio. Many extras, 4½% G.I. mort., \$16,500. Ralph, Ext. 481 or SH 4-9921.

MOBILHOME - Lincoln, 45X10, 2 bedrm, kitchen, living room, bath, storm windows, awning. Furnished. Reasonable. WA 9-4781.

RANCH-TYPE - 3 bedrm. house, full basement, 2 car gar., large lot, nice loc. Sale or rent, reasonable. AT 6-1119.

23 FT. SKIFF - Gehrlein 1954. 8 ft. beam, 60 h.p. Chris Craft. Teak decks, navy top, side curtains. 2 bunks with foam mats. helms. seat, compass, Raytheon oil press. and water temp. alarm, extras. GR 5-4627 aft. 5:30.

SNIPER SAILBOAT - \$200. John Walsh, Ext. 454.

16 FT. LYMAN LAPSTRAKE BOAT - Evinrude motor and controls. Front steering, extras. Ext. 2263 or AT 6-8215.

1960 AUXILIARY YAWL - must sell, 30 ft. ss, dacs, full head rm. Sleeps 6 in 3 compart. Fibreglass over wood, little brightwork. Reasonable offer or trade for smaller boat. Ext. 2324 or HR 3-9266.

14 FT WOLVERINE - Steering controls, fibre glassed, 25 h.p. Evinrude, 6 gal. gas tank, \$350. In water, rarin to go! C. Brunone. Ext. 574 or AT 1-9411 aft. 6.

14 FT. AMSBURY SEA SKIFF 1958 - 1956 Mark 25, good running cond. Asking \$300. Jim Flynn, Ext. 604-2410 or AT 4-1496.

SAILBOAT - 22 ft. Star Class sloop, dac. sails; 4 wheel trailer. Retired from racing but years of sailing left. Sell or trade. Ext. 454.

14½ FT. THOMPSON - 7½ h.p. Evinrude, complete accessories. In water, ready to go. \$160. Shaver, Ext. 450 or AT 6-0596 eve.

17 FT HIGGINS UTILITY SPEEDBOAT - 95 h.p. Chrysler Ace, fibre glassed bottom, new cover & cushions, excell. for water skiing, fishing, or getting there in a hurry. Top cond. R. Young, Ext. 590.

MERCURY MARK 20 OUTBOARD - Good cond. AT 4-0792.

USED TV - RCA 21, \$40. Ext. 345 or GR 5-4532 eve.

MAN'S BICYCLE - British, lt. wt., excell. cond. \$27. Ext. 503.

LAWN MOWER - Jacobsen, brand new, 18" reel type; or Craftsman rotary, 2 mo. old. Ext. 2379 or LT 9-3410 eve.

TRICYCLE - for 2-3 yr old, excell. cond.; 35mm Argus camera, leather case, good cond. Ext. 707.

35MM ARGUS C-3 - case, flashgun, filters. T. Schreiner, Ext. 2406.

OSCILLOSCOPE OM-3 - Heathkit, completely assembled and in first class operating cond. Used abt. 2 hrs. Will sell for unassembled kit price, \$45. Ames Ext. 2349.

SUPERCHARGER - Shorrock, for M.G. TC, TD, 1250 TF. Peter Fallon, Ext. 576.

PARTS - '53 FORD, etc. Std. trans., housing, starter, gen., carb., fuel pump, clutch disc, press. plate & flywheel, \$20. New Chev. truck block, V-8, 265 cu. in., 5,000 mi. on same short block, \$15. 10½ racing inboard runabout Crosley engine, powered direct drive with 2 wheel trailer; all for \$150. Ron, Ext. 464.

WASHING MACHINES - Wringer-type & tubs, Westinghouse autom., ea. \$35; chrome dinette set, \$25; daveno, \$20; single bed, \$25; rollaway bed, \$15; platform rocker, \$10; Zenith radio-phono & rec. cab., \$16; plants, misc. Moving, must sell. AT 6-1119.

AMPLIFIER - Dyna circuit, 50 watts w/Dyna 430 output transformer, \$30; 3-dwr chest, \$8; rollaway double bed, \$12; car crib, \$2; baby tenda, \$10; kit. step stool, \$4; wheel barrow, excell., \$4; hand lawn mower, excell., \$8; rubber garden hose, 50' and 25' lengths, \$4; chemical journals. Fong, Ext. 301-26 or HR 3-1631.

LOST AND FOUND

LOST - Girl's glasses, light gray frames. Missed in women's locker room at pool. H. Palevsky, Ext. 648.

FOUND - Red change purse, "Souvenir of Florida." Personnel Services, Ext. 2107.

WANTED

ON-SITE RESIDENTS - as babysitters. Please call Personnel Services, Ext. 2106.

GIRL'S 20 IN. BICYCLE - Need not be in good cond. J. Chester, Ext. 598.

SEPARABLE BUNK BEDS - Or two small single beds for children, Ext. 769.

FRENCH SPEAKING LADY - to give lessons in conversation to 3 children. AN 5-0501.

ELECTRIC RANGE - apt. size; TV set; convertible sofa bed; wooden kit. table & chairs; electric dryer; and mixmaster. Link, SH 4-3181, or Ext. 321.

GUITAR - in good cond., without metal strings for a novice. Susan Warner, Ext. 388.

BAR BELL SET - J. Kelsch, Ext. 354.

PRAM - Abt. 8' long, good cond., AT 6-1221.

CAR POOLS

Rides offered to N.Y.C. this weekend and most other weekends. Leave Friday, 5:15, return Sunday night. D. Merrill, Ext. 648.

Need ride from Patchogue, vicinity S. Ocean Ave., W.G. Creller, Ext. 301-38.

Would like to join or form car pool from Southold or vicinity. Bob Williams, Ext. 2369.

Wish to join or start carpool Canaan Lake area. C. Hunold, Ext. 657.

Looking for ride from Port Jefferson. N. Warner, Ext. 301-14.

Opening for one member in carpool from Elwood, E. Northport, Commack. Fred, Ext. 687.

ANSWER TO CHESS PROBLEM

One possibility is . . .

WHITE

BLACK

1. . . .

Q x N

2. P x Q

R x R check

3. B - K1

B x P

if

4. Q x B

R x B mate

Another idea is . . . (yours).