

the Bulletin Board

VOLUME 14 - NUMBER 48

Published by the BNL Personnel Office

AUGUST 8, 1961

THE BULLETIN BOARD takes great pleasure in printing the following resolution adopted by A.U.I. at a recent meeting at BNL.

ASSOCIATED UNIVERSITIES, INC.

Resolution of the Trustees

July 21, 1961

Leland J. Haworth

The Board of Trustees of Associated Universities, Inc. wish to record, upon the occasion of the resignation of Dr. Leland J. Haworth as President of Associated Universities, Inc. and Director of Brookhaven National Laboratory, their thanks for his manifold services since he entered the employ of the corporation over thirteen years ago.

Dr. Haworth joined the staff of Brookhaven National Laboratory on August 1, 1947, in the full expectation of devoting himself to research in high energy physics, and more especially to the design and construction of particle accelerators. However, the administrative problems of the Laboratory speedily and increasingly engaged his attention and abilities. On the resignation of Dr. Philip M. Morse, the Trustees, on July 17, 1948, named Dr. Haworth Acting Director of the Laboratory, and on October 14, 1948, Director. On January 1, 1952, the duties of Vice President were added to the Directorship, and finally, on December 1, 1960, Dr. Haworth became President of the corporation, following the resignation of Mr. Lloyd V. Berkner, who had been President since 1951. Thus, for a period of four months, Dr. Haworth was not only the corporation's principal executive officer, but also the active head of its chief operating unit, Brookhaven National Laboratory.

It is needless to enlarge upon or enumerate Dr. Haworth's achievements at Brookhaven National Laboratory. As in the case of Sir Christopher Wren, it can fairly be said "If you would see his monument, look around." Suffice it to say, that in 1948 Brookhaven had made a promising start but was still in its formative stages, and its success was by no means assured. By 1960, it had become a research institution of international reputation with a mature, devoted, and competent staff. For this growth in stature and size, the unremitting efforts, high intelligence, and complete integrity of Leland J. Haworth have been in great measure responsible. For him no obstacle has been too formidable and no task too great, or, indeed, too small. (Continued on page 2)

INTRODUCTION TO AUI'S BOARD OF TRUSTEES

Last week THE BULLETIN BOARD featured an article describing the function and organization of Associated Universities, Inc. Since AUI, like any organization is composed of people, the question naturally arises, "Who is AUI?" Because innumerable people are involved in the work of AUI, this is a difficult question to answer unless it is limited to the Board of Trustees and Officers. Thus, as a partial answer to the question, "Who is AUI?" follows a very brief identification of the outstanding men who guide AUI.

UNIVERSITY TRUSTEES

Columbia University

I.I. Rabi. Dr. Rabi is a Professor of Physics at the University and was one of the incorporating Trustees named in the charter issued in July 1946. On April 21, 1961, he was elected President.

Ralph S. Halford. Dr. Halford is Dean of the Graduate Faculty and Vice Provost for Projects and Grants and has served on the Board since October 1959.

Cornell University

Franklin A. Long. Dr. Long is Chairman of the Department of Chemistry and has served on the Board since June 1947.

Sanford S. Atwood. Dr. Atwood is Provost of the University and was elected a Trustee at the Annual Meeting in October 1960.

Harvard University

William H. Sweet. Dr. Sweet is Associate Professor of Surgery at the Massachusetts General Hospital and has served on the Board since October 1959.

L. Gard Wiggins. Mr. Wiggins is Administrative Vice President of the University and was elected to the Board in October 1960.

The Johns Hopkins University

P. Stewart Macaulay. Mr. Macaulay is Executive Vice President of the University and was first elected a member of the Board of Trustees in July 1946.

William D. McElroy. Dr. McElroy is Professor of Biology and Chairman of that Department, as well as Director of the McCollum-Pratt Institute. He is active at the Marine Biological Laboratories at Woods Hole, Massachusetts. He has been a Trustee since June 1954.

Massachusetts Institute of Technology

Carl F. Floe. Dr. Floe is Professor of Metallurgy and Vice President for Research Administration at M.I.T. and has served on the Board since October 1959.

(Please turn the page)

INTRODUCTION TO AUI'S BOARD OF TRUSTEES—Cont'd

Peter T. Demos. Dr. Demos is Associate Director of the Laboratory for Nuclear Studies. He was elected a Trustee in October 1960.

Princeton University

Joseph C. Elgin. Dr. Elgin is Dean of the School of Engineering at the University and has served on the Board since October 1950.

Elmer G. Butler. Dr. Butler is Professor of Zoology and has also been active at the Marine Biological Laboratories at Woods Hole. He has served on the Board since October 1955.

University of Pennsylvania

Francis C. Wood. Dr. Wood is Chairman of the Department of Medicine at the University Medical School and has served on the Board since October 1953.

Carl C. Chambers. Dr. Chambers is Vice President for Engineering Affairs at the University and has served on the Board since October 1954. He is the present Chairman.

University of Rochester

La Roy B. Thompson. Mr. Thompson is Vice President and Treasurer of the University and has served on the Board since October 1951.

Elmer H. Stotz. Dr. Stotz is Professor of Biochemistry and Chairman of the Biochemistry Department at the School of Medicine and Dentistry. He has served on the Board since October 1957.

Yale University

William W. Watson. Dr. Watson is Chairman of the Department of Physics and Director of Physics Laboratories at the University. He was one of the incorporating Trustees named in the charter issued in July 1946.

C. Hamilton Sanford. Mr. Sanford is Business Manager of the University and has served on the Board since October 1951.

Trustees-at-large

Leo Goldberg. Dr. Goldberg was Chairman of the Department of Astronomy and Director of the University of Michigan Observatory until June 1960, when he became a member of the faculty of Harvard University. He has served on the Board since January 1957.

Albert E. Whitford. Dr. Whitford is Director of Lick Observatory in California. He has served on the Board since October 1959.

Harold F. Weaver. Dr. Weaver is a Professor of Astronomy at the University of California in Berkeley. He was elected a Trustee in October 1960.

ANNUAL TRUSTEES

Edward Reynolds. Mr. Reynolds retired as Administrative Vice President of Harvard University in June 1960. He was first elected a member of the Board of Trustees in July 1946, and now serves as a Vice President as well as a Trustee.

Theodore P. Wright. Mr. Wright retired as Vice President for Research at Cornell University in June 1960. He has served on the Board since April 1948.

At the annual meeting in October, the Trustees voted to amend the By-laws of the corporation to provide for annual trusteeships. One of the purposes of this change was to enable the Corporation to retain the benefit of the services of experienced members of the Board who have retired from their universities.

NEXT WEEK: OFFICERS OF THE CORPORATION

Dr. Haworth (continued)

Moreover, Dr. Haworth's influence has spread far beyond the confines of the Laboratory. By achievement and example, he has given vitality to an important part of the work of the United States Atomic Energy Commission, namely, the support of fundamental research in the national laboratories.

In adopting the policy of contractor operation for these institutions, the Congress and the Commission sought to obtain the advantages of private management supported by the financial resources of the Federal Government. To be successful, this policy of the Government and its contractors imagination, understanding, and the closest possible cooperation. To Dr. Haworth's realization of these requirements and his success in meeting them, the notable success of Brookhaven National Laboratory may fairly be ascribed. At all times during his service as Director, Dr. Haworth showed himself alert to the underlying interest of the public in the Laboratory and its work. He never pressed demands which would have entailed sacrificing to the limited needs of Brookhaven the broader needs of the Commission's program as a whole. Finally, he achieved, by meticulous care, candor, and unflinching honesty, truly harmonious cooperation with the representatives of the Government.

Dr. Haworth's participation in the affairs of the corporation's other operating unit, the National Radio Astronomy Observatory, was unfortunately limited in time, but nevertheless the impact has been of enduring value. He attacked the problems of the Observatory with the same thoroughness that he employed over the years at Brookhaven, and, for some of these problems, notably those connected with the completion of the large radio telescope, he produced workable solutions. The responsibility for their effective execution of course devolves upon others. It is fair to say that under his administration the Observatory has moved closer to maturity as a research organization.

COME DANCE WITH ME

Could there be some with souls so dead
That to themselves haven't lately said
"To a dance I'd like to go
And listen to golden notes start to flow."
If this applies to you and you,
Then join us won't you, Fred and Sue?

Every Wednesday Frank Campbell and his combo entertain at the Recreation Building. The time is 8:30 p.m., admission 50¢, and refreshments are available.

Leisure is an empty cup: It all depends on what we put into it.

IN APPRECIATION

On July 29, 1961 approximately 3500 people gathered at our annual OPERATION GET-TOGETHER, and despite a curve ball thrown by old Jupiter Pluvius, they thoroughly enjoyed themselves.

To make certain that this enjoyment would prevail, many people spent many hours of diligent planning. To these people we extend a grateful thank you and congratulations on the efficiency of their committees.

Space limitations prevent us from acknowledging all of the wonderful people, but we would like to name the committeemen: Robert Fuchs, Ginger Moore, Ted Middleton, Ike Cole, Don David, Harvey Marshak, Bob Young, Joe Misiano, Bob Bowers, Dan Cantor, Blanche Laskee, Pat Towe, Joe Metzger, Marion Childress, Bob Brown, Andy Cendrowski, A. Minardi, John Pontieri, Ed Hagelberg, and Neal Roberts. We salute you for a job well done.

TENNIS TOURNAMENT

The tournament is now in its third week; the first round of matches has been completed and the contestants are entering the quarter- and semi-finals. Those victorious in the first round of the men's singles tournament were Thomas, Omen, Fujita, Raka, Collins, Coffin, Fleetman, Baker, and Carstons. Those who have won their quarter-finals matches to date are Fujita, Auskern, Craig, Merkle, and Brenner.

The first round of the doubles match found the following combinations on top: Merrill and Stearns, Carsten and Baker, and Brenner and Omenn. The semi-finals are now in swing and the winners of the matches played thus far have been Chen and Fujita, Coffin and Prodell, and Collins and Hein.

DUPLICATE BRIDGE

Last Thursday's winners:

- N-S 1. Small and Jonas
- 2. Sternheim, Mr. and Mrs.
- 3. Dvorak, Bob and Dee
- E-W 1. Ashare and Sears
- 2. Yao and Oston
- 3. Czapsik and Schwarz

Next session August 17.

WHAT'S PLAYING?

FIORIELLO!
Broadway Theatre, N.Y.C.
PARADISE ISLAND
Jones Beach Marine Theatre
DESTROY RIDES AGAIN
Westbury Music Fair

Discount tickets available at Personnel Services, 58 Brookhaven.

BERA FILM SERIES



"Bourvil, a bucolic French comedian who resembles George Gobel in appearance and Jerry Lewis in style, receives all the attention in this one. . . the actor runs through his entire repertoire of studied pantomime and slapstick pratfalls." —New York Times

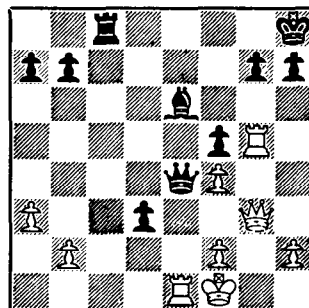
CRAZY FOR LOVE. A French comedy directed by Jean Boyer and starring Bourvil, one of France's funniest comedians. **CRAZY FOR LOVE** is a delightful farce about a village idiot who sets out to get an education so he can qualify for an inheritance. The story centers mainly around Bourvil's hilarious experiences, both in school and out, and offers ample opportunity for a display of his remarkable ability to combine comedy and pathos. Co-starring with Bourvil is Brigitte Bardot and Jane Marken.

PASSIONATE PASTIME is the short subject this week. It is a fascinating historical pageant of the game of chess over the past 5,000 years produced and directed by Hans Richter. Using rare museum pieces, the film ranges from the origin of chess in primitive times through its refinements and improvements up to the present. An experience for players and non-players alike.

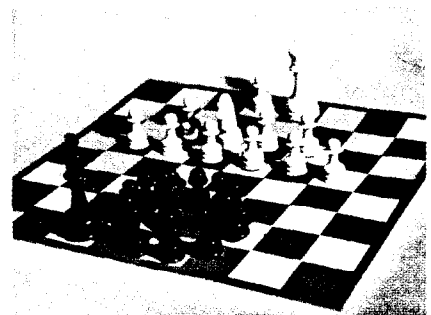
Thursday, August 10 - 8:30 p.m. - Lecture Hall

CHESS PROBLEM

In this week's problem it is Black's move. Black is a piece behind and stands to lose his K. N. pawn; but he has a passed pawn. Could White win?



BONUS CHESS PROBLEM



For the non-chessplayer (and the experts too) perhaps this will present a challenge. See next week's BULLETIN BOARD for the answer.

Answer elsewhere in this week's BULLETIN BOARD.

INVISIBLE SHIELD

It's a mighty strange thing. There are few among us who have any serious notion that we're perfect citizens, perfect bowlers, perfect golfers, because we're well aware of our faults. Yet, our attitude toward safety messages indicates that for some illogical reason we do have the notion that we're perfect drivers, perfect pedestrians, perfectly safe workers.

So, there's a curtain down between our minds and any worthwhile ideas that could improve our attitudes and actions and skills.

Take a new slant. Realize, once and for all, that you are the "other guy." Rip away that dangerous curtain in your mind. Strive to be a better driver, a better worker, a safer all-around citizen - nothing more than a simple shift in attitude, but it might save you a finger, your sight, your earning power. It might save your life. It might save the lives of those you love.

—Employers Mutuals of Wasau.

ANSWER TO CHESS PROBLEM

Black wins with:

- | | |
|-----------|--------------|
| WHITE | BLACK |
| 1. -- | Q - R8 check |
| 2. Q - N1 | P - Q7 |
| 3. Q x Q | P x R check |
| 4. K x Q | R - B8 check |
| or | |
| 3. R - Q1 | R - B8 |
| 4. K - K2 | Q - K5 check |
| 5. K x P | R - B7 mate. |

FOLK SONG CLUB



For all those interested in Folk Songs - There is a club being formed which meets every Tuesday in the Recreation Building in the Apartment area. Bring your guitar and banjo and share the fun.

ERRATUM

Rose Marie Reichhold, a runner up in the Miss BNL contest, was erroneously reported as Miss Supply and Materiel in last week's BULLETIN BOARD. As official candidate of the Applied Math Department she is proud to bear the title Miss Applied Math.

CLASSIFIED ADS

FOR SALE

1937 CORD BEVERLY SEDAN - Factory rebuilt trans. Classic form but needs work. \$100. Gordon, Ext. 2308 or EM 3-6155, 6-9 p.m.

1953 PLYMOUTH - 2-door sedan, heater, overdrive. Mech. good (burns no oil), body rusted somewhat. Never in an accident. Best offer around \$100. D. Christman, Ext. 731.

1955 CHEVROLET - Green, V-8, power glide trans., mech. sound, very clean, 2 new tires, 2 slightly used. \$550 firm. G. Hambley, Ext. 481, after 5:30. HR 2-1151.

1958 BUICK - Convertible, black, excell. tires, top. \$1295. Ext. 483.

1953 BUICK - Roadmaster, good cond. Automatic trans. \$200. Phil Duke, Ext. 2536.

CHEVROLET - Master Deluxe 2-dr. sedan. Exceptionally clean, solid 1940 beauty in classic cond. One owner, low mileage (in storage past 5 years). Ext. 2325.

14 FT. RUNABOUT - Sea King, fiberglass bottom with 15 h.p. Evinrude outboard and Mastercraft trailer. All in excell. cond. \$375. Sabine, Ext. 391 of JU 8-5586.

12 FT. RUNABOUT - Aluminum Durateck with front deck and steering. Comes with Mastercraft trailer equipped with winch and stop light. Plus bonuses. \$275. Ext. 624.

18 FT. SAILBOAT - Town class sloop in good cond. 2 suit of sail, 2 h.p. outboard, winter cover and many other extras. Fully equipped. \$475. Ext. 2309.

32 FT. CABIN CRUISER - Custom built in 1959. 10 ft. 6 in. beam, 3 ft. draft. Sleeps 5. All stainless steel and formica galley. 175 h.p. Chris-Craft Marine engine w/2:1 reduction gear. Fresh water cooled. Fully equipped, including S/S 65 watt and Depth Finder, 8 ft. dinghy with 1960 3 h.p. Johnson outboard, life preservers, etc. Must be seen to be appreciated. Now at Port Jefferson Marina. \$6500 takes all. SE 2-3296 after 6 p.m.

SAILBOAT - Cape Cod Nimblet 16 ft. sloop. Hull fiberglassed this spring. S.s. rigging, Egyptian cotton sails. Moored at Carman River, Brookhaven, ready to sail. \$325. W. Chinowsky, Ext. 746 or AT 6-0859.

14 FT. RUNABOUT - Wide beam, plywood construction; fiberglassed deck, sides, and bottom. 18 h.p. 1958 Evinrude, elec. start. Many extras incl. In water being used, but will pull out and deliver in Suffolk County. Fun for the family for \$500. Jim Klein, Ext. 2408.

BOAT - 1957 Loycraft 16 ft. with 35 h.p. Johnson, elec. start., all controls, and accessories. 1957 Mastercraft trailer. Will accept first offer over \$625. Ed Zeidler, Ext. 339 or AT 9-1430.

12 FT. RUNABOUT - Plywood, fiberglass bottom; mooring cover; fully equipped. \$125. H. Christopher, Ext. 2348.

ANCHOR - 100 lb. mushroom anchor w/chain and bouy \$30. Call Gil, Ext. 2457.

STEREO - RCA portable, 4 speed, detachable speakers. List \$130. Will sell for \$90. Brand new. AT 6-1205.

WASHING MACHINE - 1959 Frigidaire auto. washer. Like new cond. \$125. Ext. 2309.

WASHER - Bendix Economat, clean. \$15. E. Potter. TU 8-1179.

DINING SET - China closet, server, square table (pull out), 4 chairs. Light mahogany, excell. cond. Asking \$60. AT 1-8253.

WASHER - General Electric Auto. Filter-Flo, 5 yrs. old, excell. cond. Wayne Sump Pump, auto. stop-start switch, Model CD320. Used approx. one hour, excell. cond. Any reasonable offer. E. Fales, Ext. 553.

TV - RCA, excellent definition, sound, \$25. Dresser, maple veneer, excell. cond., \$12. Standing lamp, globe, 3 bulbs, \$12. Playpen, \$10; cookout table, redwood, \$8. YA 4-3719.

FRYPAN - Presto electric with control master, unused, \$12. Samson blender, almost new, \$12; G.E. travel steam iron, \$5. Camera, Minolta 16, \$10. Rao, Ext. 628 or SE 2-5722.

WASHING MACHINE - Wringer type, portable tubs, good cond., \$35; daveno, \$20; chrome dinette set, \$25; single bed, \$25; child's table & chair set; rug & pad, \$5; house plants. Leaving lab., must sell. AT 6-1119.

WASHING MACHINE - G.E. \$50; 2 bed springs for twin beds, \$8; modern, 3 globe, floor lamp, \$5; 2 glass lamps for bedroom, \$5; Storkline crib and Colgate mattress, \$30; baby lamp, \$2.50; bumpers for crib and bouncing chair, \$6; 5 piece Daystrom chrome dinette set, \$50; snack and snoozer, \$4; 2 Syraco wall plaques, \$15. Marv Weitz, Ext. 391 or AT 6-9259.

HOUSEHOLD ITEMS - Green wing chair, \$15; red stuffed chair, \$10; studio couch sleeps two, \$35; night stand, \$3; oak office table, \$5; 2 cotton hooked rugs 3x5, \$2.50 each; hi-fi cabinet, \$5. Misc. items. AT 6-0859.

FOR RENT

HOUSE - Unfurnished 2-bedroom house. 10 min. from lab. in Yaphank area. If you seek privacy and like to hike, this is for you. YA 4-6635.

LOST AND FOUND

FOUND - Pipe made in Spain, pair of metal-rimmed glasses in Maroon case, sunglasses. Personnel Services, Ext. 2107.

FOUND - Trunk key for Ford. Bob Spinrad, Ext. 2533.

LOST - Pair of women's sun glasses, prescription lenses. Ext. 2106.

LOST - Brown leather wallet. M. Goldberg, Ext. 2135.

WANTED

RIFLE - .22 cal. F. Walsh, Ext. 2184.

RIDE - to Boston, Cambridge area for week-end of Aug. 18-20. Will share expenses. Steve Cole, Ext. 671.

UNFURNISHED HOUSE - to rent until year from Sept.; fit three small children, piano, and corner cupboard. Woodwell, Ext. 719.

FURNISHED APARTMENT - \$80-100 mo. for 3-6 months. Schneider, Ext. 394.

12 FT. CAT BOAT - or similar, fiberglass. Ext. 396.