

the Bulletin Board

VOLUME 14 - NUMBER 49

Published by the BNL Personnel Office

AUGUST 15, 1961

BERA FILM

Thursday, August 17, 1961
8:30 p.m. --- Lecture Hall
"8 X 8"

Written, designed, produced and directed by Hans Richter.

Like a poet's fancy in glowing color, the film is a fairy tale for grownups based on a chess game as a symbol of the eternal conflict among men. Part Freud, part Lewis Carroll, it contains eight striking and varied episodes moving from chess board to bull ring, from Venice to Vienna. It is a chess-sonata in which kings and queens, knights and bishops, castles and pawns are played by a host of internationally-known painters, poets, composers and beautiful women. The participants include Paul Bowles, Jean Cocteau, Julien Levy, Jacqueline Matisse, Jose Sert, Yves Tanguy, Eugene Pellegrini and Ahmed ben Driss Yaccoubi.

DISORDER

A cinematic attempt to render the restlessness and confusion of Bohemian youth on Paris' Left Bank told in impressionist terms. The show will start promptly at 8:30 p.m.

BERA FILM SERIES — FIRST HALF

- Sept. 7 THE THREE PENNY OPERA
Sept. 21 BALLAD OF A SOLDIER
AND WEDGE'S NEW YORK
Oct. 5 THE QUIET ONE
AND LAUGHING GRAVY
Oct. 19 THE MOUSE THAT ROARED AND
A SERIES OF BENCHLEY SHORTS
Nov. 2 THE GOLDEN AGE OF COMEDY
AND VIRAPURU
Nov. 16 HAMLET
Nov. 30 LOVE AND THE FRENCHWOMEN
Dec. 14 A NIGHT WITH CHARLIE CHAPLIN
and two experimental films —
NARCISSUS AND OBJECT LESSON
Jan. 4 "IKIRU"
Jan. 18 ROMEO AND JULIET
- | | |
|--------------------------|---------|
| 20-admission ticket..... | \$12.00 |
| 10-admission ticket..... | 7.00 |
| Single admission..... | 1.00 |

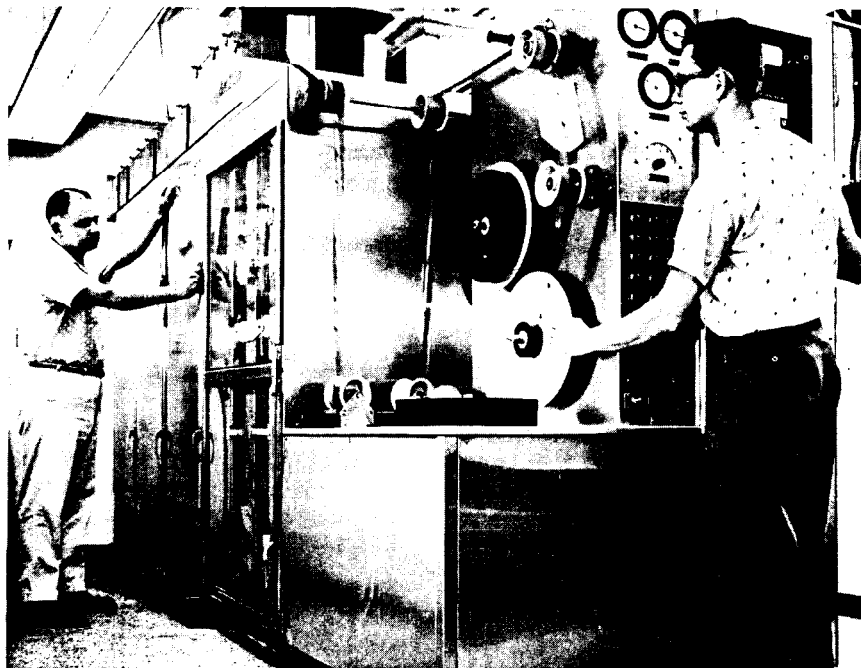
For further information contact the Recreation Office.

VISITORS TO BNL

A group of forty Middlesex County Soil Conservation Specialists from all fields of agriculture visited the Biology Department briefly Tuesday, August 15.

CONTINUOUS SPRAY PROCESSING

The increasingly large quantities of film being used by the bubble chambers, spark chambers, cloud chambers, and other recording devices at BNL have led the Photography Group to install a continuous film processing machine. This device is comparable to those in motion picture laboratories, but Brookhaven's must handle any width of film from 16 to 70 millimeters, either perforate or unperforate. Also the "stars" of these films aren't from a Hollywood set but from a chamber placed in the path of a beam from a high energy particle accelerator (such as the Cosmotron or AGS). The cameras may click in the 20-inch bubble chamber up to 15,000 times in a day of full experimental use. These photographs must be developed quickly so they can be examined by the scanners and eventually by the physicists.



Try squeezing this in your home dark room.

This machine might have come from a Rube Goldberg dream. Together with a loading section and a drying cabinet the machine has three spray cabinets containing the usual developer, fixer, and wash. The film is transported on 137 plastic rollers and in each cabinet is sprayed with solution from 96 nozzles located 12 inches apart.

At the start of a run the machine contains 600 feet of leader. Exposed film in 2000-foot reels is spliced on to the leader in the darkroom loading area, and 15 minutes later at the usual speed of 40 feet/minute is being wound up on the delivery end in another room — dry and ready for scanning.

As a loading elevator in the darkroom allows the trailing end of the film to be stopped for making splices with new reels, the film in the processing section continues to move. A succession of 2000-foot loads are attached, and the machine is not again filled with leader until the end of the day.

(Continued on next page)

Spray Processing — Continued

In the processing cabinets the solutions are pumped up from the sump, adjusted to 80°F ($\pm 2^\circ$), and sprayed in flat fans against the passing film. In effect, the interior of the cabinets is like a violent shower bath. This is a rapid and very efficient method of developing. Between the cabinets the film is spray rinsed and, as it leaves the wash cabinet, it passes through two air squeegees which act like knives of air shaving water off the surface of the film. The drying is completed in an impingement drying cabinet with blasts of hot dry air.

As the processing solutions are partially exhausted by use, they are continuously replenished at a rate designed to maintain this activity at a constant level. When running 70mm film the developer is replaced at a rate of 25 gallons per hour. The chemicals are mixed in a separate room in 100-gallon tanks with propeller blades that would make a good outboard, if you could plug it in anywhere.

A continuous check on the process is maintained by sensitometric strips which precede each roll through the machine. These "police men" are carefully standardized exposures made on a sensitometer which are read on a densitometer and plotted on a "favor" chart to detect any variation from the standard. By such means the process is held to closer tolerances than can be observed visually.

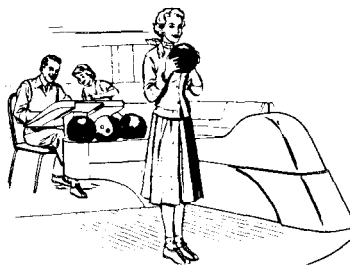
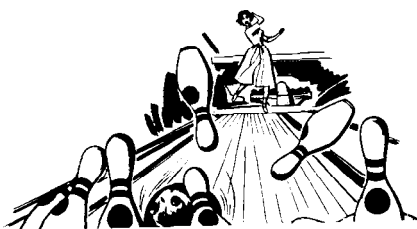
Except for a high noise level from the air jets the machine is usually well-behaved, but if trouble develops, as it may from a torn or damaged piece of film, the alarm panel lights up like a Christmas tree and the operators end up knee-deep in film. Then the job is to re-thread — a job several hundred times more difficult than your home movie projector.

Completion of the 80-inch bubble chamber in 1962 will result in an even larger number of photographs to be developed. A second spray processor will be installed this Fall.

BOWLING STARTS SOON!

Preparations for the coming bowling season, to start the week of September 18th, are underway. Many new teams are expected, as well as changes in locations. As a start in organizing our league, some idea of team plans and preferences is needed.

Prospective teams (new and old) should fill in and submit the pre-entry form as soon as possible — preference in league assignments will be given to those pre-entries received first. Pre-entry forms are not a commitment, but merely a notice of intent. Formal entries, which must be accompanied by a roster and the fee, will be available later, and a deadline set.



'61 — '62 BOWLING PRE-ENTRY FORM

(SUBMIT TO G. SABINE, RECREATION OFFICE AT GYM)

We hope to enter a team in one of the BNL Leagues —

Probable team name..... Temporary Captain.....

Our preferences are: (give 1st and 2nd choice)

Bowling Alley

Night of Week

1st choice..... 1st choice.....

2nd choice..... 2nd choice.....

Date Rec'd. in Recr. Office: Signed.....

BERA FISHING CONTEST

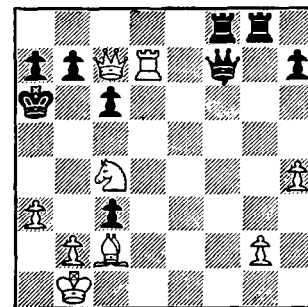
Could it really be true that only two people have been tantalizing the Long Island fish this August? Be sure to enter **all** catches for total points!

D. Ravenhall from Applied Math calculated the right lure and location to win the Fisherman-of-the-Month Award for July with a 6 lb. 5 oz. bluefish (316 points) caught in Moriches Inlet. Among the numerous July entries, a 16 lb. 2 oz. striped bass landed by John Sondericker certainly deserves mention.

Fred Cermak from Nuclear Engineering leads the August list with a 6 lb. 13 oz. black fish. Let's all get out and fish!

CHESS PROBLEM

In this week's problem it looks pretty black for Black but it is his move. Could you get out of this? Answer elsewhere in this week's BULLETIN BOARD.



CHANGES IN BOWLING RULES

At a meeting on August 7th, the Bowling Executive Board made preliminary plans for the coming season (see Pre-Entry form elsewhere in this issue), and voted in two rules changes. These changes are:

1. The handicap system has been changed from 70% of the difference between a bowler's average and 180 to 80% of the difference between the average and 200. This slightly reduces the disadvantage of having a low-average bowler on a team while still giving an "edge" to the better bowler. The new system applies to both the men's and the ladies' (which was formerly 100%) leagues. The men's league will have a maximum handicap of 70 pins, with no maximum in the ladies league.

2. Additional awards (not trophies — probably shoulder patches) have been added to recognize high scores **including** handicap. They are: (a) High individual gross series, (b) High individual gross game, (c) High team gross series. As before, no bowler may receive more than one individual award and/or more than one team award. Heretofore all individual awards have been on a scratch (not including handicap) basis, which has limited the competition to the better bowlers.

LEAGUE STANDINGS**National League**

TEAM	WON	LOST
Metallurgy	10	3
Phoubars	10	3
Cosmotron	9	4
Oldtimers	8	6
Pop-Ups	7	7
Dirty-Sox	5	9

Brookhaven League

TEAM	WON	LOST
Biology	13	2
Untouchables	8	6
Electronics	7	6
Medical	7	7
Potsareebies	6	8
Health Physics	3	9
E.O.A.	2	11



This past week saw some fierce competition in the National League as the Phoubars and Metallurgy battled for first place. The Phoubars helped their own cause by defeating Metallurgy in a well-played game by a score of 5-3. Both teams have one more game to play, Metallurgy engaging Cosmotron on Monday, while the Phoubars take on E.O.A. on Tuesday. If there is a need for a play-off, Metallurgy and the Phoubars will square away in a one game play-off on Wednesday.

The play-offs will start the week of August 21, and the season will reach its climax at the All-Star Game August 30.

ANSWER TO CHESS PROBLEM

WHITE	BLACK
1. ...	Q - B8 check
2. R - Q1	Q x N
3. B - Q3	P - B7 check, etc.

ANSWER TO BONUS CHESS PROBLEM

Your only chance now is to punt.

DUPLICATE BRIDGE

WEDNESDAY, AUGUST 16

The game will start at 8 p.m. sharp in the Recreation Hall. Master points will be awarded and a big turnout is expected. A partner is guaranteed for any player who comes.

OFFICERS OF THE CORPORATION

This is the final installment of the current series of articles introducing AUI and the men who guide it. We believe you will agree they are doing a wonderful job.

President

I.I. Rabi. Dr. Rabi is a Professor of Physics at the University and was one of the incorporating Trustees named in the charter issued in July 1946. On April 21, 1961, he was elected President.

Vice Presidents

Edward Reynolds. Mr. Reynolds retired as Administrative Vice President of Harvard University in June 1960. He was first elected a member of the Board of Trustees in July 1946, and now serves as a Vice President as well as a Trustee.

Otto Struve. Dr. Struve is Director of the National Radio Astronomy Observatory at Green Bank, West Virginia. He is an astronomer of great distinction and came to AUI from the faculty of the University of California at Berkeley.

Treasurer

James S. Alexander. Mr. Alexander is a former Vice President of the Morgan Guaranty Trust Company of New York. He was first elected Treasurer in July 1947.

Assistant Treasurer

Joseph F. Lord. Mr. Lord is an Assistant Vice President of the Morgan Guaranty Trust Company of New York. He has been an officer of the Corporation since October 1951.

Controller

Lewis R. Burchill. Mr. Burchill, in addition to his AUI duties has been Controller of Brookhaven National Laboratory since 1951.

Secretary and Counsel

Charles F. Dunbar. Mr. Dunbar has been Secretary and Counsel of AUI since 1949 as well as Resident Counsel of Brookhaven National Laboratory since 1947.

Assistant Secretary

Richard M. Emberson. Dr. Emberson devotes himself almost exclusively to the affairs of the National Radio Astronomy Observatory. He has been in charge of the construction of the 140-foot radio telescope.

DISCOUNT TICKETS

Discount tickets are available for the following shows.

THE MOST HAPPY FELLA
Westbury Music Fair
PARADISE ISLAND
Jones Beach Marine Theatre
Personnel Services, 58 Brookhaven Ave.

It's a well known fact that one of the most difficult instruments to play well is second fiddle.

RENTAL LIBRARY

New books currently available at the rental library at the Personnel Office, 58 Brookhaven Avenue, are:

GEMINI	W. Kelley
THE GOLDEN YOUTH OF LEE PRINCE	A. Goodman
THE FROG POND	J. MacIver
AIMEZ-VOUS BRAHMS . .	F. Sagan
THE SECRET OF THE KINGDOM	M. Waltari
THE WHEELER DEALERS	G. Goodman
THE SEDUCER	J. Lange
THE HIGH ROOF	J. Packer

CLASSIFIED ADS

FOR SALE

1954 MG - Model TF, good cond. Must sell. \$700. BR 3-2250 aft. 5, or Ext. 373.

1951 FORD V-8 - Tudor, std. trans. Good cond. GR 5-5894.

1954 CHEVROLET - 4 door, new tires, st. shift, 6 cyl. \$125. Kelly, GR 5-3516.

1953 FORD - 2 door, st. shift, r&h, white wall tires. \$162. AT 1-7467.

1958 FORD - Convertible, V-8, Cruisomatic trans., r&h, blue and white. Frank Drell, Ext. 2480.

1954 FORD - 4 door sedan, V-8, st. shift, new tires, good mech. con., clean inter. \$150. Ext. 2432.

1958 BUICK - Convertible, black, excell. tires, top. \$1295. Ext. 483.

1955 CHEVROLET - 2 door sedan, green, 8 cyl. \$550. Or, 1961 Willy Jeep CJ-3B, 4 cyl. \$2000. George Hambley HR 2-1151 aft. 5:30 or Ext. 481.

VOLKSWAGEN - 1960 sedan, sunroof. Reasonable. Ext. 2309 or AT 4-0291.

SPLIT LEVEL HOME - 7 rooms, 3 bedrms, 22 ft. rec. room, 1½ baths, landscaped, screens and storms, basketweave fence, side porch, Bellport. \$13,000. Judy, Ext. 2144, or AT 6-9357 aft. 5.

CAPE COD HOUSE - Shoreham, 4 bedrms, 2 baths, 5 yrs. old, finished attic, full rear dormer, 95x125 ft. fenced plot, 1½ car gar., finished basement with outside entrance to 16x30 ft. concrete patio. Many extras. 4½% G.I. Mort. \$16,500. Ralph, Ext. 481, or SH 4-9921.

HOUSE - Babylon-West Islip area; 8 yrs. old, 10 min. Jones Beach breakers, 4 large bedrooms, 2 full baths, oil hot water heat (system installed 1 yr. ago), attached garage, 75x172 shady plot. Asking \$16,500. Ext. 2516 or MO 9-7816.

LOTS - Center Moriches, 1 landscaped, large trees on Beach Fern Road, 1 on Neville St., \$1800. Good residential section, walking distance stores, etc. Ext. 689 or AT 6-0147.

PHONOGRAPH - Good cond., diamond stylus, 4 speed. \$15. Phil Duke, Ext. 2536.

RIDING MOWER - 24 in., reel type, 3 h.p. Clinton engine, \$75. Good cond. YA 4-3685 after 6.

DINETTE SET - Table, 4 chairs, steel, padded seats, good cond. \$25. Roland Alfred, Ext. 749.

18 FT. SAILBOAT - Town class sloop in good cond. 2 suit of sail, 2 h.p. outboard, winter cover and many other extras. Fully equipped. \$475. Ext. 2309.

SAILBOAT - Cape Cod Nimblet, 16 ft. sloop. Hull fiberglassed this spring. S.S. rigging. Egyptian cotton sails. Moored at Carman's River, Brookhaven, ready to sail. \$325. W. Chinowsky, Ext. 746, or AT 6-0859.

15 FT. OLD TOWNE - '57, 40 h.p. Scott Atwater, controls, trailer, Navy top, \$450. Good cond. LT 9-3072.

SAILBOAT - 15 ft., fiberglassed hull, dacron sails, S.S. rigging, \$250. Ext. 739.

25 FT. CABIN CRUISER - Richardson "Little Giant", sleeps 4-5. 95 hp Chrysler Ace rebuilt 1960. Auto. bilge pump. 3 burner bottle gas stove. Citizens band transceiver. 40 gal. fresh water tank. Clean. Port Jeff Marina. \$2200. Jud Davis, HR 3-1523 or Ext. 375.

OUTBOARD MOTOR - 12 h.p., with 6 gal. aux. fuel tank. \$100. R. Lundgren, Ext. 782.

TIRES - 4 Goodrich Silvertown, whitewall, tubeless, 750x14. Good. \$20. E. Pitti, Ext. 383, or AM 4-4627 aft. 7.

BOWLING BALL - Brand new, holes not drilled, 16 lbs. D. Sisson, Ext. 773.

PLAYER PIANO - Factory rebuilt 2 years old. Rolls, bench incl. Cost \$500. Will sell for \$185. Moved, no space for it. GR 5-7869 aft. 6.

LOVE SEAT - Duncan Phyfe, beige upholstery. Very good cond. \$75. Ext. 2230 or AT 6-8521.

PIANO - Estesy upright. Excell. cond. \$250. Bicycle, man's lightwt., 26". Almost new. \$25. Please inquire Wed., Aug. 16. Ext. 503.

DESK - 2 small chests of drawers, loveseat (needs upholstering), child's easel. GR 5-4038 aft. 6.

SONY TR-620 - Pocket size transistor radio, incl. extras. \$20. Fujii, Ext. 2537 or AT 6-9191.

"A" BATTERY ELIMINATOR - Heavy duty ATR Model 620C-ELIT delivers 6v @ 20a or 12v @ 10a DC continuously with low ripple. Built-in voltmeter and ammeter; 8 position voltage adjustment (approx. ±3v from nom. 6 or 12v). Little used. Orig. cost \$65; will sell for \$40. L. McLean, Ext. 385 or GR 5-1918 aft. 5.

AUDIO AMPLIFIER - Heathkit, 7 watt, \$5. Ext. 739.

21 IN. T.V. - G.E. Silver Screen. Like new, limed oak console. Perfect. \$150. AT 1-7467.

TV - Philco Console, 20" rect. tube. G. Kiriokos, Ext. 422.

WASHER - Foam r. beds, dinette set, TV, dresser, playpen, lamp, iron. bd., table, cot, utility cart, wagon, sled, garden tools; any reasonable offers. YA 4-3719.

REFIGERATOR - 9 cu. ft. Good cond., reasonable. S. Jungreis, Ext. 301-45 or EM 3-7032.

STEREO - RCA portable, 4 speed, detachable speakers. List \$130. Will sell for \$90. Brand new. AT 6-1205.

HOUSEHOLD ITEMS - Green wing chair, \$15; red stuffed chair, \$10; studio couch, sleeps 2, \$35; 2 cotton hooked rugs, 3x5, \$2.50 ea.; hi-fi cabinet, \$5. Misc. items. AT 6-0859.

TWIN BEDS - box springs, matt., chest night table, double dresser, mahog. in excell. cond., 1½ yrs. old., \$1200 new, will sell for \$400; convert. couch, \$40; wood. closet, \$10; lamp, \$8; 2 snow tires on rims 7.50/14, \$40; girl's 24" bike, \$15. JU 7-0711, or Ext. 393.

CASCO KITCHEN STOOL - good cond., \$1; expansion gate, 50¢; size 1 snow suit, \$2; size 1 blanket sleeper bag, like new, \$1. Size 9 nurses' uniforms, \$2 ea. AT 6-0596.

DINETTE SET - 5 piece Daystrom chrome, \$50; floor lamp, \$5; bedroom lamps, \$5; crib and matt., \$30; baby lamp, \$2.50; bumpers for crib and bouncing chair, \$6; snack and snoozer \$4; 2 Syracuse wall plaques, \$15. Marv Weitz, Ext. 391, or AT 6-9259.

WANTED

WHEEL BARROW - garden hose (abt. 100 ft.); 40 ft. extens. ladder (alum.); stiff back garden rake; 7 ft. folding step ladder. John, Ext. 2376.

IRON - good cond. Ext. 511.

Good home for German Shepherd puppies. Homeyer, Ext. 772 or JU 8-3521 aft. 6.

TENT - large enough (but not too large!) for a family of five. Need cots or air matts. Bill, Ext. 2255.

HOUSE - to rent, 2-3 bedrms, lg. din. rm., Bellport-Patchogue or Shoreham-Wading River pref. areas. AT 6-9355.

BICYCLE - man's 28". Good cond. R.A. Beth, Ext. 2263 or AT 6-8215.

LOST AND FOUND

LOST - yellow key case with VW key. Some where on north side of the gate. C. Silvers, Ext. 301-1.

LOST - Circular gold earring, between lib. and cafe. L. Collins, Ext. 2246.

LOST OR STRAYED - Large, black, affectionate, altered female cat. Last seen Aug. 4 in Yaphank. M. Metzger, Ext. 301-12.

FOUND - ladies sun glasses, tortoise shell frame; tie, found Aug. 7 between P.O. and Instr.; black and white checked jacket found at baseball field opp. Carp. Shop. Personnel Services, Ext. 2107.

CAR POOLS

Join or start carpool from vicinity of North Ocean Ave. and Middle Road, Bayport. Ext. 383 or HR 2-0832.

Driver wanted to compelte 5 man car pool. Merrick area. Charles Ruege, Ext. 451

Want to join car pool from Huntington Station area. M. Steinberg, Ext. 340.