

the Bulletin Board

VOLUME 15, NUMBER 7

Published by BNL Personnel Office

OCTOBER 24, 1961

BACK TO STANDARD TIME

Eastern Standard Time will go into effect on Sunday, October 29. Be sure to set your clock back one hour before you go to bed on Saturday night, October 28.

DISCOUNT TICKETS

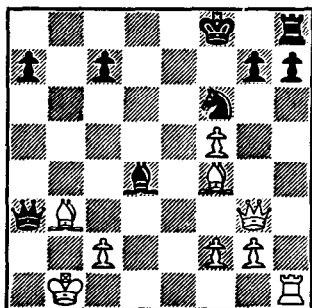
Discount tickets for the New York Knickerbockers' 1961-62 season basketball games are currently available at the Personnel Office, 58 Brookhaven Avenue.

MEDICAL CONCLAVE

Chairmen of departments of Internal Medicine at seventy American and Canadian medical schools are meeting at BNL this week, October 23 and 24. Topic of the conference, which is the sixth in the series of conclaves on the subject of nuclear energy in medicine, is "The Hazards of Uses of Atomic Radiation in Medical Practice, Teaching and Research in Internal Medicine." The AEC's Division of Biology and Medicine and BNL's Medical Department are joint sponsors of the meeting.

CHESS PROBLEM

In this week's problem, being just one move behind makes a big difference. Black would win if it were his move, but it is White's turn to play and he can prevent Black from winning. How? Answer elsewhere in this week's BULLETIN BOARD.



White to move

POOL OPEN? YES!

TUESDAY - WEDNESDAY - FRIDAY
7:00 P.M. TO 10:00 P.M.
THURSDAY
5:00 P.M. TO 10:00 P.M.

With the following article on Los Alamos, THE BULLETIN BOARD continues its current series on some of BNL's sister laboratories in this country and similar laboratories abroad.

LOS ALAMOS SCIENTIFIC LABORATORY

The Los Alamos Scientific Laboratory was established under a contract with the University of California in the early part of 1943 to provide a focal point for the previously diversified research directed toward the feasibility of an atomic bomb. Its initial staffing was partly military and partly civilian, although the major technical direction was primarily in the hands of the latter.

The Laboratory conducted the first nuclear weapons test at Alamogordo on July 16, 1945, and provided the actual weapons and the technical crews associated with them for the bomb drops the following month.

By the time of the adoption of the Atomic Energy Act of 1945, the technical military staff of the Laboratory had essentially vanished and the civilian staff had decreased. Following the decision by the AEC to continue the Laboratory as a permanent institution, the Laboratory began to grow again, reaching a present size of over 4,000 people.

During the first half-dozen years after the war, the Laboratory concentrated almost all of its efforts on problems of atomic weapons development, climaxed in 1951 by the successful development of the thermonuclear fusion principle for weapons. Since then the Laboratory has broadened the base of its activities by applying to other areas of national interest the skills and technologies developed in connection with weapons activities.

Weapons research and development is still the primary mission at Los Alamos. Other current activities include basic and applied research in the fields of thermonuclear and fission power programs, and nuclear rocket propulsion systems. The Laboratory maintains research facilities and equipment appropriate to fundamental research in nuclear physics, chemistry, metallurgy and cryogenics, computational techniques, biophysics, and biochemistry. Research is conducted in all these fields.

In nuclear rocket propulsion, the Laboratory is responsible for theoretical design and system studies of potential uses of nuclear energy for rocket propulsion, including materials, studies, construction, and operational tests of prototype and preliminary models (in collaboration with other institutions and agencies). Heat-exchanger reactors for rocket propulsion differ in important ways from reactors designed to propel ships or to produce electric power. They must be relatively light in weight, and operate at high power densities and high temperatures. They must be capable of being brought from zero power to full power in an extremely short time. These requirements produce formidable problems in core design, in development of materials, and in control engineering.

A major mission of the Laboratory is the study of power production from the fission process. These studies encompass such areas as homogeneous or mobile fuels, plutonium-burning systems, high temperature gas-cooled systems, and systems in which there is a direct conversion of thermal to electrical energy such as the plasma thermocouple.

Another mission of the Laboratory is the study of the possible production of power from the thermonuclear fusion process. The Laboratory is a major

(continued on following page)

LOS ALAMOS—Cont'd

participant in Project Sherwood, the AEC's program of research in the control of thermonuclear reactions. This is a cooperative effort, with research being conducted at several institutions. Fusion power, when achieved, will provide man with an almost limitless source of energy.

Biomedical activities grew up at Los Alamos in recognition of the difficult and unique problems that its workers would face as a result of handling plutonium. Most of the biomedical work has continued to be directly related to weapons research, development and testing, but many of the problems encountered have necessitated basic research in radiation biology, biochemistry, biophysics, radiochemistry, and instrumentation.

Finally, Los Alamos is very active in the field of electronic computing. In addition to several other computers, large and small, a gigantic new one called Stretch was installed in May 1961.

With facilities for research in the areas outlined above, Los Alamos Scientific Laboratory contributes to the over-all research and development effort sponsored by the Atomic Energy Commission.

FIRE CALL

The Security Division wishes to make the following announcement:

The ALL-CLEAR (two blasts on the siren) has been discontinued.

Incidentally, curiosity seekers and casual onlookers at the scene of a fire or accident are not welcome, since they impede emergency workers and obstruct emergency vehicles. Unless you have an official function in connection with an emergency, please stay away from the scene of a fire or accident.

NEW BULLETIN BOARD EDITOR

We are pleased to announce that Miss Janet Whitehead has joined the Personnel staff and will serve as editor of THE BULLETIN BOARD. For all future BULLETIN BOARD questions, please get in touch with her at the Personnel Office, 58 Brookhaven Avenue, Ext. 396.

BERA FILM SERIES

Attention series ticket holders! The following changes will be made in the use of series tickets:

1. All 20-series tickets will be recalled and replaced with 10-series tickets.
2. 10-series tickets which were purchased for the 1961-62 series will now be valid for all movies shown at the Lab within two years of the date of purchase. All tickets will be dated. See the ticket seller at the Lecture Hall at show time.

The next movie will be "The Golden Age of Comedy", which will be shown on Thursday, November 2. Because there will also be an art exhibit on site that evening, the movie will be shown twice - at 8:30 p.m. and at 10:00 p.m. The short subject will be run between these two performance of "The Golden Age of Comedy."

NIMRODS ARCHERY CLUB

The first interclub match for the winter season will be held with the Republic Archers on November 4 at the Babylon indoor range.

Don't forget to come out and sharpen up a little at our range on Wednesdays at 5:30 p.m. Everyone interested is welcome. Watch the BULLETIN BOARD for more details.

BASKETBALL PLANS

Representatives from several basketball teams planning to enter the slow-break competition met last week to draw up plans for the coming season. So far, seven teams have indicated interest in joining the league: Biology, Metallurgy, Phoubars, Untouchables, Old Timers, Chuckers, and Medical.

The league will start play officially on November 21. Games will be on Tuesday evenings throughout the season.

ENTRY DEADLINE - All teams must submit their rosters of players and entry fees (\$35 per team*) by **November 1**.

*The entry fee is based on a 7-team league and will be adjusted, if necessary, when the final count is in. A captain's meeting will be held at the Recreation Office at noon on November 1 to elect league officers, review the rules and approve the schedule. New teams seeking information or individuals interested in joining the league should contact George Sabine, Ext. 391.

What is slow-break basketball? The basic rule change requires the offensive team, after gaining possession of the ball, to take at least six seconds before moving the ball over the center line. This does away with the fast break and gives the defense a chance to breathe and set up.

DANCING DEMONSTRATION

Arrangements have been made to bring two professional instructors out from the Arthur Murray Dance Studio to exhibit the latest steps, review the older ones and answer your dancing questions. Free instructions will be given on this first night, October 31, Tuesday at the Recreation Building at 8:30 p.m.

A course of instructions will be offered beginning the following Tuesday at 8:30 p.m. It will consist of 10 lessons at a cost of \$1.50 per person per lesson. Bring your wife, husband, boy or girl friend or come stag.

LEARN TO SWIM

Classes are now being organized to teach you how to swim or if you're struggling along - how to swim a little better.

Adult Classes are offered to employees and their wives or husbands. Lessons will be held on Wednesday evenings 5:15 at our pool. Each session will be one hour long, once a week for a period of seven weeks. The fee for the entire course will be \$4.00 per person. Please register as soon as possible. Registration fee **must** accompany your application. Send or bring to G. Sabine, Ext. 391. (Make checks payable to B.E.R.A.)

Registration Deadline November 1st. Classes will begin November 8th (Wed.) if enough employees sign up.

Children's Classes. A class for children (at least four feet tall) will be organized on Friday evenings from 6:30 p.m. to 7:30 p.m. starting November 10th if enough children are registered in advance. The length of course, fee, and registration procedures are the same as for the adult class.

MASTER POINT GAME

A full master point game will be held this Thursday, October 26, at 8:00 p.m. in the Recreation Hall.

In a closely-contested game last week, the winners were:

N-S

1. Geddie Czapski and Dmitri Katakis
2. Skelly Frei and Les Lawrence
3. Hazel Williams and Ain Aitchison

E-W

1. Paul Reilly and Max Schmaeler
2. Mr. and Mrs. John Van Norman
3. Mr. and Mrs. Morton Sternheim

POOL OPEN? YES!

TUESDAY - WEDNESDAY - FRIDAY

7:00 P.M. TO 10:00 P.M.

THURSDAY

5:00 P.M. TO 10:00 P.M.



BERA BOWLING

Blue League

The Splitters split with the Gators. Carter rolled a 190-194-206 to give him a 590 series. Gallagher's high game was 185 with a 471 series.

The Bubble Boys met the Techs and the Techs walked off with 4 points again. From the Tech's series, it looks like they are starting to bowl now with Wessel-456, Meier-463, Heins-506, Hildenbrand-487, and Larsen with a high game of 206 to give him a 495 series. For the B.B.'s it was Frantz with 207.

The Skins took the Leftovers 3-1. The hot bowlers for the Skins were Bugala, high game 233 with a 574 series, and Lento's high game 204 with a 550 series. Uddman, for the Leftovers, rolled a 244 high game with 524 series.

The Sleepers put the Nuclides to sleep by taking 3 points. For the Nuclides, Kukacka's high game was 161. H. Lypevsky rolled a 187 high game and R. Meier rolled a 513 for high series.

The Bubble Finks and the Needlers split 2. The Finks' high men were Sondericker, 445, and Baer, 478 series. For the Needlers, Sunyar had a high game of 186 and a 457 series, and Majeski had a 460 series.

UPTON RIFLE - PISTOL CLUB

Pistol Club

All participants enjoyed the pistol match held on Sunday, October 15. The Hempstead club won the 22 calibre course by 1045 to our 1018. However, the Upton team took first place in the 38 calibre course, 901 to 846. This gave us a total score of 1919 to 1894, enough to win the match on total aggregate. The Hempstead team invited Upton to a match at their indoor range on November 15. For details, contact J. Diener.

Following are the high scores for the Upton team: 22 Calibre; McClelland 267; Goodzeit 261; Diener 246; and Colsmann 241. 38 Calibre; Goodzeit 238; McClelland 234; Colsmann 223; and Hichborn 206.

Rifle Club

Heavy overcast and occasional rain did not stop Pete Colombo from shooting 97 out of a possible 100 in the first shoot of our large bore tournament. J. Diener followed with a 95, while A. Lukas and C. McClelland tied for third with 90's.

DISCOUNT TICKETS

Discount tickets for the New York Knickerbockers' 1961-62 season basketball games are currently available at the Personnel Office, 58 Brookhaven Avenue.

THIRD ANNUAL BROOKHAVEN ART EXHIBIT

The third annual Brookhaven Art Exhibit, sponsored by BERA, will be held November 2 through November 8 in the Exhibit Hall. Six painters and two sculptors will be represented. This year's show will have an interesting variety, since it will include both abstract and representational art.

The painters represented will be Karl Schrag, William Kienbusch, Leon Goldin, Kenneth Evett, Marguerite Zorach and John Koch. The sculptors will be George Rickey and Jane Wasey. All of these artists have exhibited in many museums and art galleries and have received numerous awards and fellowships.

The entire exhibit will be on loan to Brookhaven from the Kraushaar Galleries of New York City.

The show will open Thursday, November 2 at 8:00 p.m. Brookhaven staff members and their families and friends are cordially invited to attend the opening. The exhibit will be open for two periods on Friday, November 3, from 10:00 a.m. to 5 p.m. and from 8:00 p.m. to 10:00 p.m. The following Monday,



Tuesday and Wednesday, exhibit hours will be from 10:00 a.m. to 5 p.m.

THANKSGIVING DANCE

November 17 is a date we should all mark on our calendars: That's when the official BNL fall social season starts, with a BERA-sponsored Thanksgiving Dance that should be the swingingest yet. There will be a band, a useful door prize and a surprising booby prize.

One of the unusual features of the dance is that it will be presented by the Bubble Chamber Group in cooperation with BERA. With BCG leading the way, we hope other groups at BNL will present dances in the future.

Herman Stenzler's Band will furnish the music at the Thanksgiving Dance. The group, which features the sounds of sax, trumpet, drums, bass and accordion, is now playing at the Taft Hotel Lounge in New York City.

As a famous philosopher once said, the evening should be "real kookie." Don't forget to come!

DRIVER'S CLUB OPEN HOUSE

Be sure to remember that the Brookhaven Diver's Club is holding its second annual Open House at the Pool on Monday, October 30, at 8:00 p.m. There will be displays of equipment, demonstrations of techniques, and the opportunity to try out equipment in the pool.

Whether you're interested in becoming a skin diver, or just want to know what skin diving is all about, you'll be welcome at the Open House.

The annual skin-diving class is in the process of being organized. The course will consist of 8 classes to be held every Monday night. The first 3 classes will be concerned with basic free-diving techniques and safety practices. The last 5 lessons will be on advanced diving with aqualungs.

The first organizational meeting of the diver's class will be on Monday, November 6, at 7:30 p.m., at the Pool. At the meeting, prospective members will be briefed on equipment needed and course content. No equipment will be required at this meeting.

FISHING CONTEST

Well, the fish really liked clams this week. Nick Sowiak caught a beautiful cod weighing 42½ pounds off Montauk, putting him in the lead for fisherman of the year with 733 points. Using clams for bait, Nick also caught a bluefish weighing 9¼ pounds.

Let's do some fishing! The big ones are here and there are only a few more weeks of contest time before the season ends.

CLASSIFIED ADS

FOR SALE

1951 STUDEBAKER - Champion, 4 dr., st. shift with overdrive. Eng., clutch, brakes, rubber, upholstery very gd. 25 m.p.g. \$150. Slavin, Ext. 491.

1950 JEEP STATION WAGON - 2 wheel dr. AT 6-8975.

1948 BUICK - Sedanette. Running cond., 2 new tires, 6 month-old battery. \$75. Ext. 423.

1959 CHEVROLET - Impala convertible, V-8, 250 h.p. Black, red interior. Ex. cond. \$1650. SE 2-8818.

CUSTOM RANCH HOUSE - Brookhaven, 3-4 bedrooms, 2 full baths, basement, fireplace, large plot, appliances, oil-hot water heat, low taxes. Owner leaving Lab. Asking \$19,500. AT 6-1262.

RANCH HOUSE - St. James, 3 bedrooms, many extras. Low interest, high mortgage. Ext. 563 or JU 4-6283.

COLONIAL CAPE HOUSE - Blue Point, near bay. 11 yrs. old, 6 rms, porch, flagstone patio, basement, laundry, 1½ baths, firepl., appliances, 2-car garage, landscaped ¼ acre. \$23,750. Ext. 2482 or EM 3-6741.

HOUSE - Two family, Patchogue, 2-car garage, lg. landscaped plot. No reasonable offer refused. AT 4-0249 after 5:30.

RANCH HOUSE - Centereach, 3 bedrooms, ¼ acre fully landscaped, full basement, storm windows & screens. \$12,500 OR WILL RENT, \$115-125 mo. with 1 yr. lease, opt. to buy. JU 8-2007 after 4:30.

SPLIT LEVEL HOUSE - Shoridge Hills, 7 rms, 3 bedrooms, rec. rm. 1½ baths. Private beach rights, many luxury features. SH 4-9877 evenings.

HOUSE - Bellport, walking dist. of bay, 2½ landscaped acres with wooded area, 7 rms., 3 bedrooms, cellar, patio, aluminum windows & screens, appliances, hot water oil heat. Asking \$27,500, mortgage terms arranged. Ext. 2210 or AT 6-8876 eves.

BOAT - 35x9½x3½ ft. 1958 Palmer IH 240, 2:1 reduction gear, fresh water cooled. Sleeps 5, gas stove, stainless sink, enclosed head. An older boat with all the comforts of home. Asking \$3,700. Paige, Ext. 2513 or AT 6-0284 after 6:00.

JERSEY SKIFF - 24 ft., blt. 1952 by Coast Boat Co. Chris-Craft 105 h.p. new 1959, small cabin with head, large cockpit. Fishing or utility service. \$2250. Thorndike, Ext. 787.

GUNNING BOAT - Built 1954 by Louis Howell. 1959 3 h.p. Evinrude, 12 cork Black Duck decoys. Ready to go. \$300. Fleming, Ext. 2180.

BEETLE CAT - Buy a sail boat that has been cared for. \$500. Discount for early removal. Finn, Ext. 301, or AT 6-0231.

DAY SAILER - Verg gd. cond., 24 ft. long. Willing to sacrifice before putting up for winter storage. Ext. 2630 or AT 6-0691.

JERSEY SKIFF - 26 ft., W.J. Deed Custom 115 h.p. Merc. conv., fresh water cooled. Sleeps 4, foam rubber mattress, double stateroom, full headroom, galley, head, ice box. \$3,000. Ext. 2578.

AUX. YAWL - Sacrifice. New 1960 30x8x3½ ft. Dacs. SS Marconi Rig. Ideal for safe, fast family cruising. Sleeps 6, full headroom, enclosed head, good galley. Make offer. Ext. 2324.

CHRIS CRAFT EXPRESS CRUISER - 1951, 31 ft. Twin 145 h.p. engines repowered 1960. Sleeps 4, dinette, head, bottled gas. GR 5-3624.

BABY GRAND PIANO - Very reasonable. Martin Zucker, Ext. 2207 or AT 1-6504.

PLAY PEN - \$7; high chair, \$4; rocking horse, \$2.50. Fowler, Ext. 544 or AT 6-0741.

CLOTHES DRYER - RCA Whirlpool. Purchased Oct. 1958, 3 drying cycles, 220 volts, ex. cond. Ext. 2220 or HR 3-2912.

CAMERA - Bolsey 35 m.m., with case flash-gun. Gd. cond. \$15. Rumph, Ext. 2221.

DEEP WELL JET PUMP - ½ h.p., used on 105 ft. well. Gd. cond. \$25. Porcaro, Ext. 2389, 12:00 - 12:30.

HOT WATER HEATER - and 70,000 BTU floor furnace, gas, ex. working cond. Will sell one or both, best offer. Ext. 2382 or SE 2-6241 after 6 p.m.

MOVIE CAMERA - Bell and Howell, 8 m.m. F 1.8 Zoom lens; coupled exposure meter; single frame, 16 frames per second, and slow motion running speeds. One year old. \$135. Ext. 532 after 5 p.m.

ELECTRIC STOVE - 20 inch. Gd. cond. \$50. Tom, Ext. 481.

TWO SNOW TIRES - Used 1 month, size 760x15. \$35 for both. H. Sandberg, Ext. 452.

KIRBY VACUUM - All attachments, gd. cond. \$75. Ext. 639 or AT 6-0372.

KITCHEN SET - Maple, 5-piece. Gd. cond. H. Stelzl, Ext. 2254 or SH 4-3120.

U.S. SPRINGFIELD - Model 1903, 30.06. Serial 832679. Groove barrel with sling. AT 6-0248 after 6 p.m.

ACCORDION - Galizi & Sordoni, 120 bass student model. Two treble shifts, case. \$100. Roller skates, ladies' size 7, Hyde shoes. Like new. \$10. Ron, Ext. 464.

PURITRON UNIT - Ext. 395.

TURNABLE - Miracord automatic, Model X100, 4-speed with full provision for automatic or manual operation, push-button. Miratwin turnover magnetic cartridge. Ex. cond. \$30. R. Betts, Ext. 610.

1956 MARK 25 - Gd. running cond. Michigan bronze prop. Asking \$90. Jim, Ext. 2410 or AT 4-1496.

TWO SNOW TIRES - Recapped, tubeless 640x15. Used 4 months on Studebaker Lark. \$15 for both. Dee, Ext. 301-37 or AT 6-8909 after 6 p.m.

WANTED

ELEC. CLOTHES DRYER - 115 to 120 volt. In good working order. Also desire good children's table and chairs. B. Mozer, Ext. 749.

SNOW PLOW - For Jeep Station Wagon, Ext. 782.

PLAY PEN - L. Belkin, Ext. 563.

METRONE - and 120 bass accordion, ladies' size. Paul Pion, Ext. 2430.

TRUMPET - Reasonable. L. Harty, Ext. 333.

TO TRADE - 24 in. RCA console (like new) for 19 in. portable TV any make. Ext. 405.

BOY'S 28 in. TWO WHEELER - Good condition. Reasonable. Pat, Ext. 330.

VACUUM CLEANER - Any cond. if repairable. Will buy, or will trade for 3-yr.-old G.E. washing machine. Ext. 2430 or AT 6-0691.

CAR POOLS

Ride to Adelphi. (Sayville Extension) on Monday evening for 6:30 class. Please call S. Leonard, Ext. 2135.

Ride to Hofstra, Tues. and Thurs. evenings, 6:15 class. Hilgemeier, Ext. 2531.

Fifth driver needed in carpool to and from Bayport. Cy Fine, Ext. 346.

Fifth member for carpool from Lindenhurst-West Babylon area. Ray Drager, Ext. 2468.

Established carpool would like fifth driver from Strongs Neck-Setauket area. Kinne, Ext. 593.

Driver wanted to join car pool from Bayport village vicinity. Ext. 301-107.

Want to join or form carpool from Brookhaven. Ext. 2430 or AT 6-0691.

Ride from vicinity of Sayville wanted. J. Palmer, Ext. 639 or LT 9-0435.

FOUND

Pr. of men's sunglasses. Personnel Services,

SOLUTION TO CHESS PROBLEM

WHITE	BLACK
1 Q x P	1 K x Q
2 B-R6 Mate	
Or the long way:	
1 Q x P Check	1 K-K1
2 Q-B7 Check	2 K-K1
3 Q x P Check	3 K-K1
4 B-B7 Check	4 K-B1
5 B-R6 Mate	