

the Bulletin Board

VOLUME 15, NUMBER 8

Published by BNL Personnel Office

OCTOBER 31, 1961

ELECTION DAY WORKING HOURS

The normal working hours for the Laboratory on Election Day, Tuesday, November 7, 1961, will be from 8:30 a.m. to 3:00 p.m. However, employees will be paid for the regular day.

Time cards for personnel working the normal day schedule will show 1500 (3:00 p.m.) as the time out for those leaving at 3:00 p.m. and immediately above it in the time-out column will be entered "E-2".

Supervisors of personnel in positions which require service on three shifts will schedule Election Day shifts for two hours in addition to the regular shift schedule but will not require the two additional hours to be worked.

Time cards will show the time actually worked and above the figure in the time-out column will be entered "E-2". Consequently, the two hours of time off for voting purposes will be at straight time for all employees.

1961 VISITORS' DAYS

TO ALL EMPLOYEES:

As in past years, the 1961 Visitors' Days were eminently successful. Many of our visitors on these three days have expressed their thanks for the warmth of their reception and the lucid presentations of the various aspects of the Laboratory's research. These annual Visitors' Days are an important part of the Laboratory's responsibilities to its neighbors and to the general public. All of the Laboratory staff who participated in this project are to be thanked for the considerable effort they contributed toward making these Visitors' Days a success, and I wish to convey my personal appreciation to them.

MAURICE GOLDBABER, Director

OVER 12,500 VISIT BNL

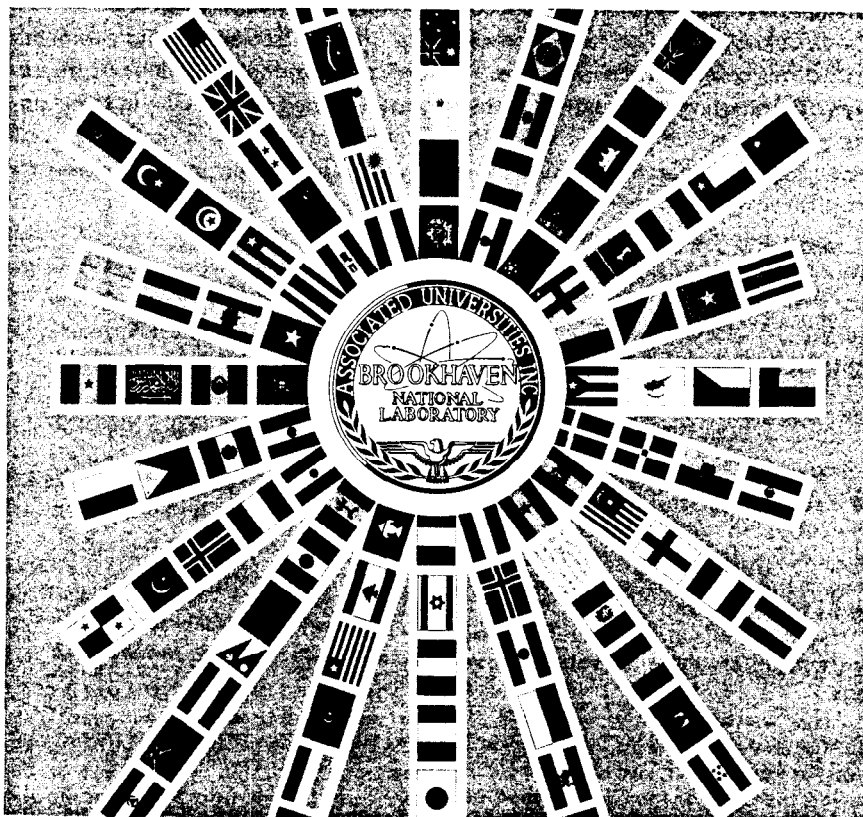
A total of 12,853 people visited the Laboratory during this year's three Visitors' Days.

Saturday, October 21 - Visitors' Day for the General Public - drew a crowd of 7,135.

On Friday, October 27, over 1,000 college students inspected the various exhibits and facilities at BNL.

And, last but not least, visitors numbering 4,273 turned out for High School Student Visitors' Day on Saturday, October 28.

BNL'S INTERNATIONAL SET



United Nations Day, which was last Tuesday, October 24, might have served us as a reminder that BNL is itself a truly international community. According to the latest tally, there are 189 foreign nationals, representing 32 countries, holding formal appointments to the staff of the Laboratory.

Not surprisingly, the countries with the largest representations are Great Britain and Canada with 33 and 17 people, respectively. Next come Germany (15) and three Asian countries. Japan (15), China (14) and India (11). The show of hands from Asia also includes Korea, South Vietnam and Pakistan from the Far East; and Iran, Lebanon and Israel from the Middle East.

In addition to Germany, many other European countries are represented at the Lab: Greece, Holland, Portugal, Denmark, France, Austria, Italy, Switzerland, Spain, Norway, Yugoslavia, Sweden, Belgium and even tiny Liechtenstein.

Only a few "delagates" from Latin America hold appointments to BNL's staff at the present time - there are three Argentineans, one Brazilian and one Chilean. Haiti also claims a visiting scientist here.

Just one African country currently has a representative at the Lab: South Africa. Rounding out the group are three citizens of Australia.

BNL's international set of 189 is composed of regular employees, students, research associates and visitors. Research associate appointments are similar to postdoctoral fellowships in that they are awarded to recent Ph.D.'s and

(continued on following page)

INTERNATIONAL SET—cont'd.

M.D.'s for further study and research in their particular areas of interest. Foreign nationals form a little more than half of the total number of people now holding such appointments to BNL's staff. In the visitors category, largest of the four, are over eighty scientists and engineers who receive their support from outside sources. Some are supported by their home governments or institutions, or by fellowships from organizations such as the International Atomic Energy Agency, the International Cooperation Agency and NATO; others, already in the United States as students or research workers at American Universities, have come to BNL as part of an American university team.

Brookhaven has no formal program for attracting scientists and engineers from other countries to work here. However, in keeping with its basic objectives of promoting the use of its many special facilities and serving in the training of scientists and engineers, BNL has maintained a policy in recent years of encouraging any qualified scientist-citizen or alien to engage in its research programs.

Our international members not only contribute to BNL through the work that they do, but also through the exchange of ideas and friendly relationships that their presence fosters. Science is international in scope and may be one of the successful avenues by which men can come to understand each other and settle their differences peacefully.

BERA FILM SERIES

"The Golden Age of Comedy" will be featured at the Lecture Hall on Thursday, November 2. Because there will also be an exhibit on site that evening, the film will be shown at 8:30 and again at 10:00 p.m.

The short subject, "Uirapuru", will be presented between the feature showings.

"The Golden Age of Comedy" is classic proof that the camera as a vehicle for humor reached its peak during the days of the silent comedies, about 30 years ago. This side-splitting cavalcade of sight gags was assembled by Producer Robert Youngson after looking at 2,000 comedies made by the masters. Hal Roach and Mack Sennett were back of the camera in these inspired productions of 1923-1928, as were many other famous names. In the eight reels of collectors' items are knockout scenes of slapstick with the Keystone Cops and Billy Bevan; uninhibited sequences from Laurel and Hardy's zany masterworks; the early Will Rogers spoofs; memorable wonderful moments with Carole Lombard in a rah-rah collegiate drag; and miming by baby-faced Harry Langdon.

SERIES TICKETS ARE NOW VALID FOR TWO YEARS FROM DATE OF PURCHASE. 10-SERIES TICKETS (\$7) CAN BE PURCHASED AT SHOW TIME. SINGLE ADMISSION \$1

Life magazine said about "The Golden Age of Comedy": "Some of the finest sight gags from what many people consider the funniest pictures

ever filmed." And the New York Herald Tribune states: "This is one of life's almost-vanished pleasures - the shared enjoyment of humor and artistry on the screen."

BERA CONCERT SERIES

**Albeneri Trio - Brookhaven Center
8:30 p.m. - Monday, November 13**

The second of the current BERA concert series will present the Albeneri Trio. Tickets are available by contacting Rudy Sher, Ext. 453. The price is \$7.50 for series tickets and \$3.00 for single admission.

The Brookhaven Center will serve a special Concert Supper from 6:00 to 8:00 p.m. for the convenience of those attending the BERA concert.

Reservations are necessary and must be made in advance not later than 5:00 p.m. on Monday, November 13. Call Ext. 2302 or 2453.

A VISITOR'S THANKS

The following thank-you note from a very young lady, presented just as she wrote it, makes a meaningful final note to BNL'S 1961 Visitors' Days:

Dear Sirs,

Just a few lines to say hello and thank you for spending so much time on the exhibits and explaining to us about the things we did not know about the: synchrotron, cosmotron, nuclear reactor, hot laboratory, and the chemistry and physics.

I enjoyed every minute of being there. Every model looked so percise, it seemed to be like the real thing.

I haven't much to say for now. By!

NUCLEAR FALLOUT RADIATION MEASURING KIT

Personnel Services will make available for purchase the Bendix radiation measuring system designed for home survival use. The system has been approved by the Health Physics Division and Civil Defense.

Priced at \$18.75, the kit consists of two radiation dosimeters, charger, and instruction manual. One of the dosimeters is calibrated to indicate 0-600R exposures and the other unit describes dosage rate.

Instruction in the proper operation of the unit will be arranged for interested parties. Contact Health Physics, Ext. 2308, for information.

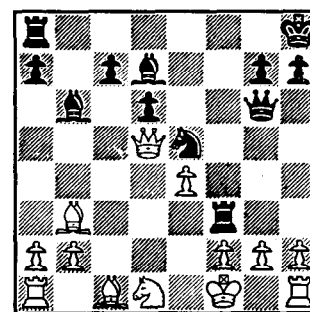
Orders accompanied by payment in full will be taken at Personnel Services through Friday, November 10.

ART EXHIBIT

An exhibition of oil paintings by Mrs. Daphne O. Dostrovsky will be held at the Three Village Art Shop in Setauket from November 4 to November 30. In addition to portraits, the exhibit will include many landscapes of Israel. Mrs. Dostrovsky is the wife of Dr. I. Dostrovsky, visiting scientist in the Chemistry Department.

CHESS PROBLEM

White is eyeing Q x R. But White is one move behind because it is Black's move. Can you get White out of this situation - and even win? Answer elsewhere in this week's BULLETIN BOARD.



Black to move

FAMILY PASSES

All employees are urged to obtain long term passes for members of their immediate families if such members will use the recreation areas without the employee being present.

Members of immediate family include husband, wife, children over 13 years of age and other relatives who reside in the employee's home. A memo of request to the Security Office is sufficient.

BANK AND POST OFFICE HOURS

The Peoples National Bank on site will be closed on November 7, Election Day.

U.S. Post Office Election Day hours will be from 8:15 a.m. to 3:00 p.m.

DANCE CLASSES

The first lesson in a series of 10 will be given by two instructors from the Arthur Murray Dance Studios on Tuesday, November 7, at 8:30 p.m. in the Recreation Building. Fee - \$1.50 per person per lesson. Everybody welcome!

BASKETBALL

Opening Game - Tuesday, November 21

Team Entries - Due now!

Entry Fee - \$35 per team

Players' Pool - Call G. Sabine if you are interested in joining a team.

Captain's Meeting - Wednesday-noon- November 1 at the Recreation Office.

NIMRODS ARCHERY CLUB

Don't forget the first interclub match this Saturday, November 4, at 10:00 a.m. at the range in Babylon with the Republic Archers.

The winter indoor season at the Gym will open next Monday night, November 6. Everyone is welcome. Whether you're interested in shooting or not, come down and watch - or even try a shot or two if you'd like. We have a good instructor and all kinds of equipment on hand.



Purple League

BERA BOWLING

The Scotches split 2-2 with the Toppers. For the latter, Zavesky had a 183/497 and Reany, a 208/531. Mead and Galen of the Scotches rolled 186 and 200/515.

The Phoubars conquered Fiscal 3-1. Phoubars' Caiazza and Gardiner had 190 and 212/520. For Fiscal, Bohn rolled a 180/516.

The Woodbutchers vs. Designers score was also 3-1. Ruppert and Benson of the Woodbutchers had scores of 190/480 and 220/526. Chirco bowled a 197/509 for the Designers.

The Bowl Aids were defeated by the Hope Fuls 3-1. For the latter, Sundberg had a 210/234/594 and Kuzmack, 234/588. Schulz and Sawyer of the Bowl Aids had 180/517 and 161.

Pink League

The Nightingales are singing the blues after losing 4 to the Twinkletoes. Twisted neck all cured, J. Siebert rolled a 210 (70-pin handicap). (Continued on Page 4)

GYM OPENS NEXT WEEK

Starting Nov. 6th the gymnasium will be open evenings (Nov. - April) to 9:30 p.m. - Mon., Tues., Wed., and Thurs. Equipment is available for badminton, volleyball, basketball, table tennis, exercising, etc. Locker and shower rooms.

SCHEDULE - Mon.: 5:00 - 7:00 p.m. Tennis (by reservation)

7:30 - 9:30 p.m. Archery Club

Tues.: 5:00 - 9:30 p.m. Basketball League - Table Tennis

Wed.: 5:00 - 7:00 p.m. Tennis - Table Tennis

7:00 - 9:30 p.m. General Activities

Thurs.: 5:00 - 7:00 p.m. Volleyball

5:00 - 9:30 p.m. General Activities

Fri.: 5:00 - 7:00 p.m. Tennis

ELECTION DAY RECREATION SCHEDULE

Bowling - Our ladies' and mens' leagues will bowl as scheduled. See your league secretary for exact time.

Pool - Recreation Building - Gym - Will be open as scheduled.

VOLLEYBALL LEAGUE

Thursday evening has been set aside on the Gymnasium schedule for our volleyball enthusiasts. Two courts are available for games from 5:00 p.m. on. For the past few years, play has been more or less informal with no regular scheduled competition.

However, this season several departments have indicated they would like to get an active league started with a prearranged schedule, team standings, and, at the end of the season, trophies for members of the winning team.

Entries are now being accepted at the Recreation Office for teams wishing to enter the competition. The names of 8 players will constitute a minimum roster. Games will be scheduled weekly. A meeting of team representatives will be held in the near future to draw up rules and schedules.

Entry Deadline: November 15.

For information, call G. Sabine, Ext. 391.

UPTON RIFLE - PISTOL CLUB

The results of our election of officers will be announced at the November 2 monthly meeting. Paul Hichborn has arranged an exhibit of hand guns for this meeting. Anyone who has a hand gun that he would like to show should bring it to the meeting.

The weather was perfect for shooting last Sunday. Anyone who does not believe it can call Judd Diener, who shot a 99 out of a possible 100 in the large bore match at 300 yards. The one point that Judd lost was out of the bull by 1/4 of an inch! Pete Colombo followed with a 97, and Jim Rutherford took third with a 95.

THANKSGIVING DANCE

Achtung party people. Preparations are being made to insure that our Thanksgiving Dance be the party of the year.

Admission to the dance is a modest \$1.50 each for employees and \$2.00 for guests. This donation includes free chips, pretzels, and Long Island ice. Beer, soda, and hot dogs will be on hand for a small fee. Best of all, bring your own nectar and favorite drinking glass.

The response to Herman Stenzler's Band has been overwhelming. People who have heard the band say that the two vocalists plus grand music amount to a successful group. As is our custom, we are going to present a dance contest featuring that new dance craze that is sweeping New York - the Twist.

The date, November 17. Don't miss the party of the year.

ART EXHIBIT OPENS THURSDAY

The third annual Brookhaven Art Exhibit will open this Thursday, November 2 at 8:00 p.m. and run through November 8 in the Exhibit Hall. The exhibit will be open for two periods on Friday, November 3, from 10:00 a.m. to 5:00 p.m. and from 8:00 p.m. to 10:00 p.m. The following Monday, Tuesday and Wednesday, exhibit hours will be from 10:00 a.m. to 5:00 p.m.

The Brookhaven Center will serve a special buffet supper for the convenience of those attending opening night of the exhibit on November 2. The price of the supper will be \$2.75 and it will be served from 6:00 to 8:00 p.m.

A few of the artists whose works will be featured at the exhibit will be present.

Reservations are necessary and must be made in advance not later than 5:00 p.m. on Thursday, November 2 by calling Ext. 2302 or 2453.

BERA BOWLING—Cont'd

The Contacts were wired for 3-1, shocking the Dipions. V. Austen for the Dipions converted a 5-7 split and P. Perry for the Contacts came through with a 6-7-10.

The Allthumbs stole 3 answers from the Question Marks. G. Searles converted the 2-7 split and B. Nine conquered the 5-7. High game was Irene Ditmar's 172.

Blue League

The Needlers really gave the Splitters the old horse needle this time, taking all 4 points. The Needlers who applied the pressure were Earle, 451, Sunyar with high game of 191, and Majeski who rolled a 489 series. Carter of the Splitters rolled a 190-181-200 to give him a 571 series and Spira rolled a 191/523.

The Bubble Finks split 2-2 with the Sleepers. Bear, for the Bubble Finks, rolled a 439 series. Meier, for the Sleepers, rolled a 200 for high game to give him a 505 series.

The Skins lost 3 points to the Techs. Bugala rolled a 205 for high game giving him a 534 series and was helped out by Weinmann with a 481 series. The leading Techs were Wessel with a 464 series, Hildenbrand with a 194 for high game and 533 series, and Larsen with 216 high game and 534 series.

The Bubble Boys rolled against the Nuclides and lost 3 points to them. Frantz had a 486 series for the Bubble Boys. The Nuclides bowled as a team with the exception of O'Donnell, who rolled a big 383 series.

The Alleygators took the Leftovers into the swamp and came out with 4 points. Uddman of the Leftovers had a 195 high game and 538 series. The Alleygators rolled with four men; Sucher had a 202 high game and 493 series. Watson came up with a 497 series.

FISHING CONTEST

In this last month of the fishing contest, there should be some good striped-bass fishing on both shores. On the north shore, the Crane Neck area is producing fish, mostly small but with a few 10-20 pound fish mixed in. The south shore is producing stripers in the inlets with some fish in the 20-pound class.

The 42-pound cod caught last month is going to be hard to beat for the season's honors, but the fisherman of the month contest is still wide open for anyone who wants to drag his monster to the scales.

ADULT SWIM CLASS BEGINS

The first adult swim class lesson will be given on Wednesday, November 8 at 5:15 at the Pool. We still have room for a few more people. Call G. Sabine, Ext. 391, for further information.

SOLUTION TO CHESS PROBLEM**WHITE**

1
2 K x Q
3 K-N1
4 RP x R

BLACK

1 Q x P
2 B-R6 Check
3 R-N6 Check
4 N-B6 Mate

CLASSIFIED ADS**FOR SALE**

1951 PONTIAC CATALINA - Hydramatic, r&h, gd. running cond. \$100. R. Gottschalk, Ext. 2315.

1955 OLDS '88' HOLIDAY - 4-door, power steering and brakes, auto. trans. \$450. Reiff, Ext. 481.

1955 MERCURY MONTCLAIR - Coupe, full-power, auto. trans. L. Stuart, Ext. 782 or GR 5-0294.

1953 HILLMAN SEDAN - Low mil., r&h, gd. cond. \$120. Leon, Ext. 628.

1957 FORD FAIRLANE - T-bird V-8 Fordomatic. Power steering and brakes. 45,000 mi., orig. owner, ex. cond. Must sell! \$690. Ext. 2188 or SH 4-2097.

VAUXHALL - 20,000 mi. (1960). Very clean. \$800. GR 5-3921.

1956 DODGE CUSTOM ROYAL - Elect. windows & seats, 3-tone paint, power steering & brakes, low mi., r&h. Also, 1961 Volkswagen Camper Deluxe, 1400 mi., 30 mpg, seats 8. Closets, water storage, bed, ice box, 2 built-on tents. Both priced for quick sale. Homeyer, Ext. 772 or JU 8-3521 eves.

1951 JEEP STATION WAGON - Gd. mechanical cond. Ext. 2184.

COLONIAL CAPE HOUSE - Blue Point, near bay, 11 yrs. old, 6 rms., screened porch, 1½ baths, flagstone patio, fin. basement, laundry, firepl., appliances, 2-car gar., landscaped ¾ acre. \$23,750. Ext. 2482 or EM 3-6741.

CUSTOM RANCH HOUSE - Brookhaven, 3-4 bedrms., 2 full baths, basement, firepl., appliances, oil-hot water heat, ¾-acre plot. Owner leaving Lab. Red. to \$17,900. AT 6-1262.

BOAT - 35x9½x3½ ft. 1958 Palmer IH 240, 2:1 reduction gear, fresh water cooled. Sleeps 5, gas stove, stainless sink, enclosed head. An older boat with all the comforts of home. Asking \$3,700. Paige, Ext. 2210 or AT 6-0284 after 6:00.

JERSEY SKIFF - 24 ft., blt. 1952 by Coast Boat Co. Chris-Craft 105 h.p. new 1959, small cabin with head, large cockpit. Fishing or utility service. \$2,250. Thorndike, Ext. 787.

2-WHEEL UTILITY TRAILER - 4 by 6 ft. Very gd. cond. \$50. GR 5-1583.

RADIO RECEIVER - Hallicrafter SX 101A. \$265. Robertson, Ext. 2470 & 507.

PR. TABLE LAMPS - \$15. Also odd table lamp, \$10. HR 3-3089.

2 SNOW TIRES - 1 mounted, size 760x15, used 1 season. \$20. C. Bennett, Ext. 411 or AT 1-8683.

GERMAN SHEPHERD - AKC-registered, male, 2 yrs. old, has all shots, perf. cond. Gentle with children. Leaving Lab, must take best offer. D. Levine, PA 7-4650.

35 M.M. GRAFLEX CAMERA - F/3.5 lenses, built-in split-image rangefinder and timer, leather case and flash attach, \$35. 2 Walkie-talkies, 1 operating, 1 needs minor parts, \$15. TV set, Westinghouse 16 in. console, needs some work. \$10. Roto-Broil with rolling table, very gd., \$30. B. Williams, Ext. 2369.

WESTINGHOUSE REFRIGERATOR - old but good cond. \$25. Thayer twin carriage, seldom used. \$25. Ladies gray winter coat, size 13, "Lassie Jr." brand. Seldom worn. \$20. Almost new winter maternity outfits, size 16. \$15. for all four. Enamel baby tub, infants car bed, \$5. for both. Ext. 2543 or AT 6-0408.

2 CRIBS - bassinette, highchair, tricycle, carriage, record player, beach umbrella. Owner leaving country. S. Penselin, Ext. 564.

9x12 FT. RUG - Wool and nylon. \$30. Shaver, Ext. 388 or AT 6-0596.

TRAM SET - Lionel "O" gauge. 1 eng., 5 freight cars, remote switches, straight, curved, uncoupling tracks, etc. 2 mech. buildings, extras. \$30. J. Weiss, Ext. 2472.

PURITRON UNIT - Ext. 395.

TAPE DECK & RECORDING PREAMPLIFIER - Pentron Prof. Model. Tape deck, TM-56, 2-speed with 4 pole motor. Preamplifier, P-4, with VU recording meter. Unit seldom used. Orig. cost \$170, will sell for best offer. R. Young, Ext. 591.

FOR RENT

4-ROOM APARTMENT - Furnished, with bath. AT 6-8975.

SMALL HOUSE - Furnished, hot water heat, all improvements. Rocky Point, rent until June. SH 4-2461 after 6:00.

NEW HOUSE - Bellport, 3 bedrms., fin. cellar, attached garage. 100x100 plot. \$120 mo. Mrs. Williams, AT 6-0644 after 5:00.

WANTED

RIGGING & SAILS - For 14 ft. boat, 9½ ft. boom. Also good 35 m.m. camera. Shaver, Ext. 388 or AT 6-0596.

SPORTS CAR - 1956-59 MG, Triumph, Austin Healey or similar model. Ext. 2184.

H-O TRAINS - If you are tired of railroading, call R. Mitchell, Ext. 653 or 673.

CAR - Prefer Ford, Plymouth or Chevy not earlier than 1955 model and not more than \$300. E. Sacharidis, Ext. 2510.

PHOTO ENLARGER - For 2¼x3¼ in. negatives. Gd. cond. J. Schneider, Ext. 568.

CAR POOLS

Want 2 drivers to complete existing carpool from Holtsville area. Ext. 2180.

Rider wishes to join carpool south of Swan Bakery in E. Patchogue. Joe, Ext. 2264 or GE 5-3071.

Driver needed for established carpool from Bayport village area. J. Opkins, Ext. 2574.

Want to join carpool from Medford Ave. area, Patchogue. M. Brooks, Ext. 2346.

Want to join existing carpool in vicinity of N. Ocean Ave., Patchogue, south of Sunrise. P. Payne, Ext. 610.

FOUND

WHITE GLOVES - 2 pairs, found after Pegram Lecture. Personnel Services, Ext. 2106.

EARRING - Blue crystal. Personnel Services, Ext. 2106.