

# *the* Bulletin Board

VOLUME 15, NUMBER 14

Published by BNL Personnel Office

DECEMBER 12, 1961

## CHRISTMAS HOLIDAYS

Monday, December 25, will be observed as the Laboratory's Christmas Holiday, and the last four hours of scheduled work preceding Monday will be observed as a pre-Christmas half holiday.

The Peoples National Bank facility will be open from 8:00 a.m. to 12:30 p.m. on Friday, December 22. All weekly paychecks will be distributed at the Bank during these hours.

Weekly employees on a shift basis who will not be able to pick up their checks on Friday may have the checks mailed to them by leaving their name, address and life number with the Fiscal Division Cashier not later than Monday, December 18.

Because of the short work weeks following the Christmas and New Year's holidays, supervisors are asked to deliver weekly time cards and monthly leave records in person to the Payroll Section by 9:00 a.m. on the Tuesday following the Christmas holiday, and to deliver weekly time cards to Payroll by the same time on the Tuesday following New Year's holiday.

Since weekly paychecks will not be ready until Thursday of both weeks following the holidays, weekly shift employees who normally receive their checks on Wednesday may have them mailed to their home if they will leave their name, address and life number with the Cashier not later than Tuesday, December 26, and Tuesday, January 2.

## SOCIAL SECURITY

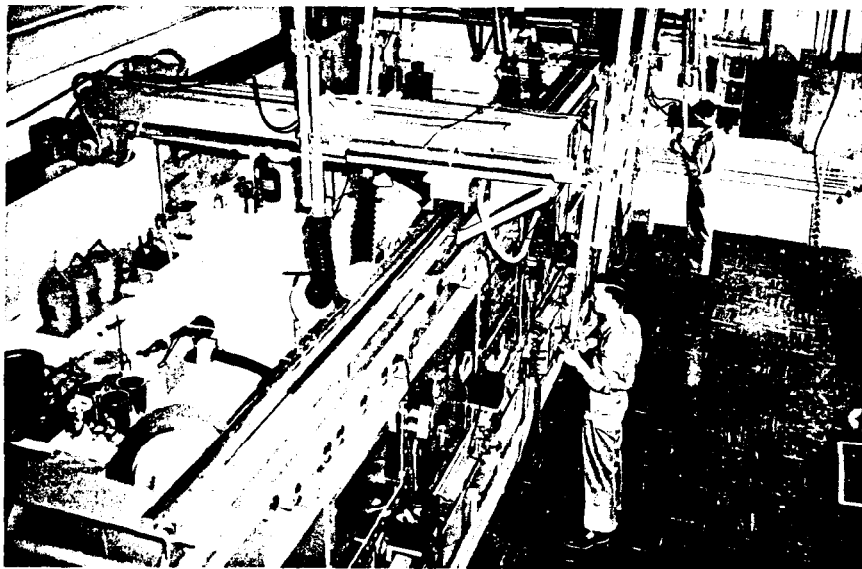
### DEDUCTIONS INCREASE

Effective January 1, 1962, the Social Security Law requires an increase in your Social Security deduction, to 3½% of the first \$4,800 earned. This will mean an annual deduction of up to \$150, instead of \$144 under the old maximum rate. The Laboratory, of course, must increase its contribution to match its employees' dollar for dollar.

The change in the Social Security Law was passed by Congress last summer, when taxes on both employees and employers were raised in order to make increased Social Security benefits possible.

**MOVIE — DECEMBER 14**

## AMES LABORATORY



Ames "hot canyon," a laboratory equipped for the safe handling of relatively high levels of radioactivity.

Ames Laboratory, at Ames, Iowa, is operated for the Atomic Energy Commission by Iowa State University through its Institute for Atomic Research. Though Ames is not a National Laboratory, its research and development work is linked importantly with many of the programs conducted by the National AEC installations, as well as other major laboratories of the Commission.

Iowa State University's participation in the national atomic energy program began early in 1942. At that time, Dr. Enrico Fermi's group at the University of Chicago was a focal point of U.S. atomic research. The specific objectives at Chicago were: studies of nuclear properties, of the possibility of establishing a self-sustaining chain reaction, and of the possibility of manufacturing plutonium in a nuclear reactor. The physical chemistry section at Iowa State had long been active in problems connected with physical metallurgy and the chemistry of the rare earths. The Ames group was therefore requested to establish and direct a chemical program at Chicago to complement the physics research there.

A materials research program was also maintained at the University. There, the Laboratory carried out a major portion of the metallurgical research for the atomic program and conducted fundamental studies on the chemistry of plutonium and other materials that might be used in nuclear reactors. Along with other groups, Ames also attacked the problem of producing large amounts of pure uranium metals for use in reactors. The Laboratory furnished a substantial portion of the metal used in the first successful chain-reacting pile at Chicago in December, 1942. The methods that are now used nationally by industry for the large-scale production of uranium, thorium and several other metals were developed at Ames during this period.

(Continued on following page)

**AMES LABORATORY — Cont'd.**

As the huge research and production installations at Oak Ridge, Los Alamos and Hanford began operation and took over various production phases of the atomic program, a number of scientists trained at the Ames project were assigned to these facilities. Ames, however, continued to be active in metals production, as well as materials research work, for the duration of the war.

When the Atomic Energy Commission was established in 1946, it decided to maintain extensive facilities at Ames. In May 1947, the Commission announced that the Ames Laboratory, within the Institute for Atomic Research (established by Iowa State in 1945), would continue to be one of its research institutions.

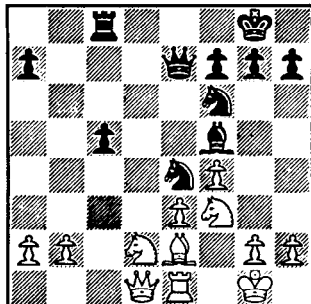
Ames is now engaged in a program of basic materials research, and is a leader in rare-metals research and development. Present facilities at Ames, most of which are located on the Iowa State University campus, include six buildings with physical, chemical and metallurgical laboratories. The Synchrotron Building houses two small electron synchrotrons that are used primarily for materials research. Research programs are administered under four categories: metallurgy, chemistry, physics and engineering. The applied metallurgical research of the Laboratory is generally directed toward the development of special metals and alloys for nuclear applications. Ames' research on the rare earths and other exotic materials has resulted in important basic information on the properties of the metals and salts. The ion exchange process for separating the rare earths was developed at Ames and has made compounds of the unfamiliar elements available to science. Research in physics includes studies by means of beta- and gamma-ray spectrometry and high energy accelerators. Many developments in solid state physics and high energy physics have been achieved, such as the discovery of the isotope phosphorous-33 and the establishment of a method for the accurate measurement of thermal properties of metals and alloys at high temperatures.

**SECOND PEGRAM LECTURES BOOK**

The 1960 Pegrarn Lectures by Dr. Rene Jules Dubos have been published in book form. Entitled "The Dreams of Reason; Science and Utopias," the lecture series consists of four talks, individually titled "Salomon's House and the Baconian World," "Medical Utopias," "Illusions of Understanding," and "The Dehumanization of the Scientist." The book may be ordered from Personnel Services, Ext. 2106.

**CHESS PROBLEM**

In this week's problem, it is Black's move. White's King seems to be well defended, but a close study will provide a win for Black. Can you do it?

**TWELFTH BROOKHAVEN LECTURE**

By DR. LEWIS K. DAHL  
MEDICAL DEPARTMENT

Title:

EXCESSIVE SALT INTAKE  
AND HYPERTENSION:

A DIETARY AND GENETIC INTERPLAY  
Lecture Hall: 8:00 p.m., Wed. Dec. 13

A buffet supper (\$2.75) will be served at the Brookhaven Center before the lecture, beginning at 6:00 p.m. Reservations should be made at least one day in advance by calling Ext. 2302 before 5:00 p.m., or Ext. 2453 in the evenings.

Refreshments will be available in the Research Staff Lobby following the lecture.

**LIQUID METALS CORROSION MEETING**

The third annual AEC-NASA Liquid Metals Corrosion Meeting will be held at Brookhaven on Thursday and Friday, December 14 and 15.

**UPTON RIFLE-PISTOL CLUB**

Attention pistol shooters! The last match of 1961 will be held at the Southampton range on Thursday, December 14. Let's have a good turnout.

**PATIENTS' WELFARE FUND**

Several employees, on learning that the Medical Research Center's hospital maintains a patients' welfare fund, have urged that particularly at this time of the year an announcement about the fund be made to all Laboratory employees.

Since the first contribution by an appreciative family in 1949, the hospital has maintained a fund for the benefit of patients during their stay at the Medical Research Center. Use of the fund is restricted to expenditures for which operating funds of the Laboratory may not be used, and typically covers such items as favors for birthday and holiday celebrations, radios for patients confined to bed and therefore unable to enjoy TV programs available in the pavilion day rooms, and personal needs of patients without resources. On two occasions over the past twelve years, the fund's balance has reached as high as \$400. Usually, however, there is just enough to squeak by until some "angel" prevents its reaching zero.

Many employees who are familiar with the pleasure and appreciation of patients benefiting from the fund believe that, with knowledge of the existence and need of the fund, individuals and groups will always prevent the use of the "no funds available" stamp.

**MAILING CHRISTMAS CARDS**

Postmaster Garrett of the U.S. Post Office requests that you separate your Christmas cards into boxes or bundles according to city or state destinations before bringing them in to be mailed.

**LAST CHANCE  
FOR CHRISTMAS CANDY AND COOKIES**

The deadline for placing Christmas candy, cookie and fruitcake orders at the Personnel Office is Monday, December 18. All orders must be accompanied by payment in full.

**NEXT DANCE BY S. AND M.**

The Supply and Materiel Division has taken up where the Bubble Chamber Group left off by volunteering to be the second department to "present" a BERA dance. S. and M. will take over the committee work to select the entertainment and set up the Gym for our Valentine Dance on Friday, February 16.

Because of everyone's enthusiastic reception of Herman Stenzler's Band at the last dance, we are now trying to schedule his services for the Valentine Dance.

## FISHING CONTEST

The 1961 Annual BNL Fishing Contest came to a close at the end of November. Nick Sowiak was the monthly winner again in November. He came up with a huge 12 lb. 11 oz. fluke worth 634 points to top all other entries for the month.

There will be a meeting at the Recreation Office at 12 noon, Thursday, December 14, to announce the final big winners of the yearly awards and to formulate plans for next year's contest. All monthly winners, fishing committee members, and anyone who is interested are requested to attend.

The monthly winners for 1961 were: March - tie, J. McCafferty - 1 lb. 8 oz. White Perch, P. Hlavac - 1 lb. 8 oz. White Perch; April - J. Klein - 1 lb. 3½ oz. White Perch; May - J. Pontieri - 1 lb. 12 oz. Yellow Perch; June - R. Emanovsly - 2 lb. 14 oz. Brook Trout; July - A. Ravenhall - 6 lb. 5 oz. Bluefish; August - H. Buchanan - 10 lb. 8 oz. Blackfish; September - C. Tierney - 3 lb. 7 oz. Lg. Mth. Bass; October - N. Sowiak - 42 lb. 8 oz. Cod; November - N. Sowiak - 12 lb. 11 oz. Fluke.



## BERA BOWLING

### BLUE LEAGUE

Well it looks like the Splitters don't want to bowl well unless they roll against the Tech's: this time they gave 3 points to the Bubble Boys. Maybe it was some of the hot games like Babbs' 161 and Frantz's 191 or was it Spirio's dazzling foot work that gave him a 101? This might have caused the split in the Splitters. Even with Sick's high game of 202-505 series and Carter's 183 high game 515 series all they could take was 1 point.

The Needlers didn't penetrate the tough hide of the Tech's except for 1 pt. this round. Weiss tried hard with a 184 high game for the Needlers. He was helped out by Majeski's 170 high game and Sunyar with a 180 high game with a 461 series. The Tech's that broke the Needlers were Wessel with a 215/576, "Baby Face" Larsen's 191/509 and "Legs" Heins who covered the alleys to come up with a 472 series.

The Leftovers battled it out against the Sleepers, only to drop 3 points to the Sleepers. The Sleepers that rolled well were Meier 210/532 and Lypecky, 209/502. The man that led the battle for the Leftovers was Banslaben with a 160/414.

The Alley-Gators evened it up with the Nuclides this time. The Alley-Gators took 4 points from the Nuclides so nicely that the Nuclides were left standing (?) with their mouths wide open. The Alley-Gator who showed up was Sucher with 5 strikes in a row

## BERA FILM SERIES

### "A Night with Charlie Chaplin"

Thursday, December 14, 1961

Lecture Hall, 8:30 p.m.

The BERA group is happy to present an evening of entertainment that will include some of the silent era's most hilarious comedies. Thursday's program will star Charlie Chaplin, with Slim Summerville, Chester Conklin, Hank Mann and The Keystone Cops. The following productions will be featured: Dough and Dynamite, Caught in a Cabaret, His Pre-Historic Past, His Trysting Places, Easy Street, In the Park, and The Tramp. Also included in the program will be three Mack Sennett films: "Dare Devil," "Feet of Mud," and "Taxi Dolls."

### FILM SCHEDULE THROUGH JUNE 1962

Jan. 4	IKIRU - Japan, Akira Kurosowa, Director
Jan. 18	BACKSTREETS OF PARIS - France, Simone Signoret starred
Feb. 1	ROMEO AND JULIET - Britain, Lawrence Harvey starred (This date announced incorrectly on previous posters)
Feb. 15	LUCKY JIM - Britain, Ian Carmichael starred. Short, SUMMER CINEMA 16
March 1	OTHELLO - U.S.A., Orson Welles starred.
March 15	To be announced.
March 29	THE MEDIUM - Menotti opera, Marie Powers & A.M. Alberghetti starred.
April 12	To be announced.
April 26	THE ORESTEIA - Greece
May 10	THE LAW IS THE LAW - France, Fernandel starred. Short, HARLEM WEDNESDAY.
May 24	THE WHITE REINDEER - Finland. Short, A DAY IN THE COUNTRY.
June 7	MEXICAN BUS RIDE - Mexico. Experimental film, NARCISSUS & OBJECT LESSON
June 21	OEDIPUS REX - Canada, Tyrone Guthrie, Director
July 2	BROTHERS IN LAW - English, Terry Thomas & Ian Charnichael starred. Short, MOBY DICK

This program will be changed only if it can be improved. Your suggestions are welcomed.

that gave him 211/505. Of course, Stelmashuk rolled his weight 210/504. Even the Nuclides' bringing in "the quiet man," Reed, who sneaked in a 516 series, didn't help.

The Bubble Finks lost 4 points to the Skins this time. Miller from the Finks rolled a 180 high game but didn't have any help. Weinmann from the Skins got in a 187/509 and had strong help from his team. There's a definite difference.

### PURPLE LEAGUE

The Phoubars swept their match with the Designers 4-0 to increase their league lead. Phoubars leading were Brown 191/533, Vogt 188, and Cox 165. For the losers, Chirco and Rocklein rolled 181 and 170 respectively. The Bowl Aids roared out of the cellar spot to take 3 points from the Scotches. Bowl Aids best were Walsh 187/469, Shultz 178 and Sawyer 147. Scotches trying were Johnson, 198/486 and Galen 191. By taking 4 points from the Hopefulls, the Toppers closed the cellar door upon them. Toppers tops were Scatton 201, 226/563 and Bubka 187/523. The winners had Sundberg 200/541. The Woodbutchers and Fiscal postponed their match.

### RED LEAGUE

The Cosmos belted the H.P. Outs for 4 points. Doing the better belting were Trannis 216, 208/585 (New high series), Hoyle 171, 213/494 and Skelton 188/477. High man for H.P. Outs was Caldwell with a 160.

The Mecas helped the Utilities retain first place by defeating the Biology Bugs 3-1. Helping the cause were Lehecka 179/485, Stafford 182/461 and York's conversion of the 4-10 split. Biology's best was turned in by Berech 174/499, and Rigopoulos 178/456.

The Ah Sos went on a rampage with Walter and Brockbank rolling 186/477 and 170/467, respectively. H.P. Ins had Len Baker, 177/464.

The Downunders chopped up the Utility Hot Shots 3 to 1. The big choppers were Little Buckes 203/533, Hook-Ball Fales 211/497, Zorros' 169/490 and Roll-Along Bieselin's conversion of the 6-7 split. Utilities' top men were Mike Iarocci 190/505 and John Connolly 208/560.

### PINK LEAGUE

All that can be said for the Contacts and the Twinkletoes is that they split 2-2.

The Dipsions went to town at the expense of the Allthumbs. M. Hall rolled 162, J. Reidl, 172, and E. Norton a 446 series. This flying team now holds high game (1051) and High series (3059) honors. Unable to report last week, we would like to mention that G. Fales of the Allthumbs tied high game of 184.

The Nightingales won 3-1 over the QuestionMarks. On their side was D. Rippenger with 178, M. Hill, 155. Going for the Question Marks was D. Dioguardo with 150, 145/422.

When you buy things for a song,  
watch out for the accompaniment.

## RECREATION HOLIDAY SCHEDULE

The Swimming Pool, Gymnasium, Recreation Building and Recreation Office will be **closed** the week of December 25.

All the facilities will resume their normal schedules on Tuesday, January 2.

### SKI CLUB TRIP

The first trip of the season will be on the weekend of January 13-14. We plan to stay in the Manchester, Vt. area and ski the new Stratton Mountain slopes. If thirty people sign up, the cost for transportation plus two nights lodging and three meals will be \$25 to \$26. Those interested may call Nancy Ashton, Ext. 2532 or Eugene Raka, Ext. 310.

### DUPLICATE BRIDGE BOOMING

Turnout at the duplicate bridge games held two Thursdays each month has been growing in leaps and bounds. From four table games early this fall, attendance has now reached the eight-table mark, and new players most of whom have only played rubber bridge before, are trying duplicate and are enjoying it. The game is run in a very relaxed way by director Sandy Wagner. Coffee is served and other refreshments are available.

The winners of November's full master point game were:

#### N-S

1. MR. & MRS. VERDIN
2. MRS. FREI & MRS. EMERSON
3. MR. & MRS. STERNHEIM

#### E-W

1. MR. SCHERMER & MISS SUICH
2. MR. AITCHISON & MISS KUO
3. MR. & MRS. VANERVELDE

A fractional master point game will be held December 21 at 8:00 p.m. in the Recreation Hall. A partner is guaranteed for everyone.

### ANSWER TO CHESS PROBLEM

- | WHITE   | BLACK       |
|---|-------------|
| 1. ....   | N-B7        |
| 2. Q-B1   | Q x P       |
| 3. N-R6 Double Check  |             |
| Or if White had taken the Knight, then .....  | Q x P Check |
| White would be forced to go to N3 (because K x Q would lead to N-N5 Mate). So ..... |             |
| 3. K-N3   | N-R4        |
| 4. K-R4   | Q x P Check |

NOTE: Anytime you have questions about problems or solutions, don't hesitate to discuss them with Martin Van Lith, Ext. 565 or AT 1-9693.

## CLASSIFIED ADS

### FOR SALE

1957 CHEVROLET STATION WAGON - 4 dr., 6 cycl. std. shift. Trailer hitch, r&h. Best offer over \$500. Ext. 542 or AT 6-1295.

1954 FORD - Gd. running cond., new shocks, plugs & points, muffler, tail pipe, new battery, carburetor & tires. Must sell. A. Delph, Ext. 439.

1955 PONTIAC - 860 repainted brown & white, r&h. Stand. \$275. D. Keating, Ext. 578.

1931 MODEL A FORD - 4 dr. sedan in good cond. Incl. 5 wheels & tires, size 8.20x15 for use on beach in addition to the regular 5 wheels & tires. Price \$250 firm. Ext. 745 or LT 9-2174 evenings.

1956 VOLKSWAGEN - Deluxe Sedan, r&h, w/w, ex. cond. 32 mpg. Newly inspected. \$600. Tanaka, Ext. 732.

1951 FORD - Very fine cond., 2 dr, r&h, new battery, water pump, carburetor, radiator and tires. Best offer over \$170. Ext. 717.

CAPE COD HOUSE - St. James, 4 bedrm., 1/4 acre, attached. garage, 2 baths, din. rm., washer, dryer, wall to wall carpeting, 2 refrigerators, oil hot water heat, completely landscaped. Taxes only \$260. Asking \$16,500. Call JU 4-6748.

HOUSE - E. Patchogue, split level, 100x100 with many extras. Excell. vicinity. AT 6-0632.

HOUSE - 7 rm. ranch, Bellport. 95x175, 2 or 3 bedrms., liv. rm., dining rm., den, patio, 2 baths. Oil/Hot water heat. Compl. landscaped. Owner leaving Lab., must sell Asking \$17,000. Ext. 2109 or AT 6-0789.

BOAT - 18' Thompson completely refinished, new hardware, rebuilt zero time twin 25 hp Johnsons, electric starter, controls, Navy Top, covers, new batteries on purchase. \$1200. Ext. 483 or AT 9-0854.

25' RICHARDSON - Little Giant Cabin Cruiser. Chrysler Ace 95 hp rebuilt in 1960. Sleeps 4 - 5. Bottled gas, auto. bilge pump. All necessary Coast Guard equip. Must sell. Price \$1650. Call Ext. 375 or HR 3-1523. Jud Davis.

STEREO ALBUM - "Music of Worlds Great Composers," plus appreciation guide. Twelve long-play records - Bach, Mozart, Chopin, etc. New - only 3 or 4 played at all. Cost \$18. Sell for \$13. Ext. 322.

MAPLE YOUTH BED - and mattress. \$15. Wood high chair (birch) \$5.00. Mahogany finish TV table with swivel top, \$2. Precise, all-metal enlarging easel, \$4. ST 7-1284 or Ext. 301-113.

LARGE PALAMINO SPRING HORSE - Korvette price \$27. My price \$15. 16" chain driven tri-cycle, new tires, A-1 cond. Orig. price \$45. My price \$25. Steve Garrett, Ext. 2123.

SKI BOOTS - Woman's with carrying rack. Worn four times, size 7 1/2, \$16. Ext. 2348. Nimmo.

16" TV - Portable, gd. cond. \$50. Ext. 2344.

ONE WHEEL TRAILER - 1/4 ton capacity. Best offer. John, Ext. 782.

INFANT SNOW SUIT - 24 month, worn 3 times, (bought too small) \$3 (1/2 orig. price). Smitty, Ext. 2478 after 4 p.m.

WALKER TURNER HEAVY DUTY 6" PLANER - with tool stand. \$110. Laminated Spruce Star mast approx. 32', \$100. Star dacron mainsail. Approx. 30'6"x14'6"x31'9", \$125. Star dacron jib approx. 20'6"x7'2"x17'10", \$25. Peter Paige, Ext. 2513.

1/4 MIDGET GOCART - Clinton 2 1/2 hp, 2 cycle. Best offer over \$80. Dorothy, Ext. 2357.

SKIS - Used one season, excell. cond. \$17. Van Hook, Ext. 2241.

E♭ ALTO SAXOPHONE - Made by the H.N. White Co. Good cond., gold plated with case, \$60. Karl Rosenbaum, Ext. 2207.

### WANTED

BANJO - in good cond. Will trade guitar with case and/or trunk. B. Keck, Ext. 752 or AT 6-9751 after 6 p.m.

SPINET PIANO - Call Trudi Neuhooff, Ext. 2178 or GR 5-3816.

HOUSE TO RENT - 2 bedrms., unfurnished, but with appliances. Couple with no children. North or South Shore. L. Lax, Ext. 301 or 523.

WOMAN TO SHARE HOME - With family. Own room, full house privileges, meals, also include ride to and from Lab. Call HR 2-0987 after 6 p.m.

BICYCLE - Boy's or girl's model English Racer 26", under \$15. Please call Ext. 301-96.

### FOR RENT

HOUSE - Brookhaven, 2 bdrms., utility room, modern kitchen, attached garage, full basement. Consider Rent with option to buy. AT 6-1307.

APARTMENT - 4 room, just painted, unfurnished. Call SE 2-6070.

APARTMENT - 4 room, furnished. AT 6-8975.

### CARPPOOLS

Would like fifth driver to complete present four-member carpool from Massapequa-Amityville area. Ext. 2293 or 559.

Would like to form carpool to Suffolk County Community College at Selden, Wed. & Thurs. evenings. P. Vosganian, Ext. 2430.

Driver needed to complete existing carpool from Patchogue. Ext. 472.

Paying rider, Medical Department, would like transportation from Bayport, south of Middle Road. Ext. 301-107.

Driving Wellesley, Mass. for Christmas weekend. Would like rider to share driving. Leave Saturday, Dec. 23rd, return Tuesday, Dec. 26th, or can alter plans to suit your convenience. Hazel Williams, Ext. 2205.

Want to form or join carpool from Bellport. Can drive Tues., Thurs., and Friday. Ext. 2246.

One driver needed to fill out existing car pool from Sayville-West Sayville area. J. Smolski, Ext. 651.

### LOST

KEYS - One set, black case. Phil Stohr, Ext. 2334.

MANS HAT - Brand-new brown felt Dobbs, Abraham and Strauss, initials A.J.B. in band. Lost at Plant Maintenance Christmas Party. Brunini, Ext. 620.