

the Bulletin Board

VOLUME 15, NUMBER 31

Published by BNL Personnel Office

APRIL 10, 1962

BASKETBALL CHAMPIONS



Members of the "Old Timers" captained by Tom Holmquist (about to dunk one) pose with their first place awards. Next year they promised to lend the ladder to another team. Standing left to right: H. Frei, W. Lanyi, C. Ryer. Up the ladder: T. Prach, J. Pontieri, F. Nichik.

BOWLING AWARDS NIGHT

Well, this week should finish league bowling with one more night each for Sweeps and Championship.

Then comes the event of the year - **Awards Night**. Mark the date, April 27, Friday, 8:15 p.m., at the Gymnasium. This annual affair promises to be the biggest wing-ding ever held at the Gym. Every bowler who attends is in for the surprise of the year.

All the committees are working hard on new ideas for the dance. There will be music by that most sought-after bandleader, Buddy Sandy. We have been fortunate to sign this five-piece band, plus vocalist, to a contract. Upon his completion of a fabulous run, Buddy has agreed to fill the Gym with danceable music from 9:30 p.m. until 2:00 a.m.

Something new has been added this year and that is the fact that food will be served at 11:30 p.m.

BERA FILM SERIES

INGMAR BERGMAN'S

"THREE STRANGE LOVES"

Thursday, April 12

8:30 p.m.

Lecture Hall

"Three Strange Loves", which is not recommended for children, is a series of film essays representing Bergman at his very best on the subject of love. The picture is in Swedish with English subtitles. In addition to the feature film, an Experimental Film entitled "Language of Faces" will be shown as a short subject.

NEWS FOR SERIES TICKET HOLDERS

"Lucky Jim", which was cancelled in February because of bad weather, has been rescheduled for Thursday, May 31, and will be shown as a **Bonus Film**. All series ticket holders will be admitted free.

Series tickets are valid for any ten movies within two years after the date of purchase. They are available from the ticket agent at the Lecture Hall at show time.

MOVIE SCHEDULE THROUGH AUGUST, 1962

April 12	Three Strange Loves	Ingmar Bergman
April 26	The Oresteia	Greece
May 10	The Law Is The Law	France, Fernandel starred
May 24	The White Reindeer	Finland
June 7	Mexican Bus Ride	Mexico
June 21	Oedipus Rex	Canada, Tyrone Guthrie directing
July 2	Brothers-In-Law	Britain, Terry Thomas starred
July 9	The Golden Demon	Japan
July 16	As You Like It	Lawrence Olivier starred
July 23	The Love Game	France
July 30	Make Mine A Double	Britain
August 6	Miss Julie	Strindberg classic
August 13	The Golden Coach	Anna Magnani
August 20	Love In The City	Italy
August 27	The 400 Blows	France

THREE SOFTBALL LEAGUES

Action on the softball fields has already started as 15 teams are practicing now to get in shape for opening day, April 30th. We had so many teams this year that we were able to establish three leagues. All teams were evaluated and placed in a league with teams of similar ability in an effort to keep the competition up for everyone throughout the season. Each team will play three games against opponents in the same league plus one inter-league game against a team in each of the other two leagues.

Trophies for first place will be awarded the winners in each league. A playoff will be held among the top teams to determine the Laboratory champions. As usual, an All-Star Game will be held at the season's close to climax the activity.

Brookhaven League: Metallurgy, Phou-bars, Blue Jays, Cosmotron, Old Timers.

National League: Electronics, Dirty Sox, Upton Downers, Biology, Untouchables.

Laboratory League: Gnats, Bubble Boys, E.A.O., Medical, Health Physics.

SIXTEENTH BROOKHAVEN LECTURE

by D. SCHWEITZER
Nuclear Engineering Department

Title:
"Fundamental Studies of
Radiation Damage in Graphite"

LECTURE HALL, 8:00 P.M., TUES., APRIL 17

A buffet supper (\$2.75) will be served at the Brookhaven Center before the lecture, beginning at 6:00 p.m. Reservations should be made at least one day in advance by calling Ext. 2302 before 5:00 p.m., or Ext. 2453 in the evenings.

Refreshments will be available in the Research Staff Lobby following the lecture.

*Arrivals and Departures***WELCOME TO BNL**

AGS	
John J. Jackson	Ext. 2553
CHEMISTRY	
Hamada Masayuki	731
FISCAL	
Alfred J. Ciervo	2390
INSTRUMENTATION	
Arcadio Niell	542
NUCLEAR ENGINEERING	
Leonard C. Emma	2521
PHYSICS	
Cynthia R. Brunini	2600-2619
William Delaney	2656
Dorothy L. Karshick	780
John W. Pukit	791
John F. Slavik	791
PLANT MAINTENANCE	
Louis T. Kolb	2389
Max J. Rose	620

LEAVING BNL

APPLIED MATH	
Katherine Chen	
BIOLOGY	
Elizabeth Fulhaber	
PHYSICS	
Carl M. Olsmats	

FENCING

The Fencing Club will meet, as usual, on Wednesday, April 11th, from 5:00 to 7:00 p.m. at the Gymnasium.

One of the greatest causes of world trouble today is that stupid people are so sure about things — and the intelligent folks are so full of doubts.

**TEAM-OF-FOUR
BRIDGE TOURNAMENT**

If you have not yet entered your team in the team-of-four tournament to be held Thursday, April 12, at 8:00 p.m. in the Recreation Hall, please call Bob Dvorak, Ext. 618.

In this hand from our last master point game, an injudicious double led declarer to an unusual and successful line of play.

N-S vulnerable

S

S. A K 9 8 6

H. 7 6 5 3

D. 3

C. A Q 9

W

S. 10 7 5 3

H. J 10 9 8 4

D. 10

C. 6 4 3

E

S. Q J 4

H. A K Q

D. Q J 8 2

C. 8 5 2

N

S. 2

H. 2

D. A K 9 7 6 5 4

C. K J 10 7

Bidding

N	E	S	W
1S	X	5D	P
P	X		

South's 5D bid was aimed at keeping the non-vulnerable opponents from finding a possible sacrifice in hearts.

A heart was opened, declarer ruffing the second round. Recalling East's double, and seeing the trump ace draw West's 10, declarer decided to play East for the remaining trumps. For the necessary trump coup to succeed, East had to have 3 clubs. A club to dummy, a heart ruff, two more clubs, another heart ruff, the ace and king of spades, declarer pitching his last club. On the spade lead from the board, East, holding Q J 8 of trumps, played the J. Declarer, holding K 9 7, underruffed with the 7. East was end-played. Had declarer overruffed, he would have been endplayed.

UPTON RIFLE-PISTOL CLUB

On Sunday afternoon, Roy Domish showed that he is the man to beat in large bore competition. Roy fired a score of 150 out of a possible 160 in four-position shooting at 200 yards. Al Lukas and Judd Diener were close on his heels with scores of 146 each.

Next Sunday will see the BNL riflemen on the north site range at 2:00 p.m. If you have not signed up, come out Sunday.

SOCIAL SECURITY

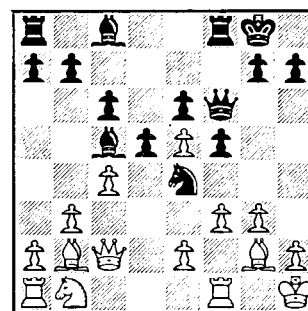
Some married women still carry the same social security cards they had before they were wed. They fail to make the necessary changes for months, or even years, after they have changed their names from Miss to Mrs.

The key to your social security record is your social security account number card. No one should have more than one social security number, yet it is possible to have more than one card under different names. In the interest of having all earnings properly credited to the proper account number, the Social Security Administration needs to know about changes in names, whether it be because of marriage, divorce, or other reasons. Women who marry and fail to report this change may experience delay when it is time to figure the social security benefits due them.

It really is a simple matter for a newly married woman to insure that her social security records are current and correct under the proper name and number. If you can, it is best to bring your old social security card to the nearest social security office. In Patchogue the address is 38 Oak Street — GROVER 5-3031. The social security office will issue you a new card with the same account number you had but under your new name.

CHESS PROBLEM

In this week's problem it is Black's move. Having two pieces under fire, Black has to come up with a sure move. Answer elsewhere in this week's BULLETIN BOARD.



Black to move and win

NEW TELEPHONE DIRECTORY

April 13 is the closing date for changes and additions to the April, 1962, issue of the Brookhaven National Laboratory Telephone Directory. Please check your listing and send any changes or additions to the Communications Group, 2 Center Street, on BNL Form No. 241B.



BERA BOWLING

PINK LEAGUE

The Question Marks failed in all but one game against the Nightingales. High for the Question Marks were J. Hughes with 162, L. Bartos with 177/450, and D. Dioguardo who rolled 155, 156/460.

The Twinkletoes picked up 3 from the Dipions. For the Dipions, R. Svendsen rolled 181/453, C. Gelhaus rolled 416, and V. Austen converted the 5-7 split. H. Sandberg rolled 157/431 and converted the 5-7 split for the Twinkletoes.

The Allthumbs took 3 points from the Contacts. For the Thumbs G. Fales rolled 167, 178, 190/535 and A. Woodbury rolled 166. For the Contacts, M. German and M. Doherty both converted the 5-10 split and C. Lydecker rolled 213/478 for second high game, and second high gross game with 265.

GREEN LEAGUE

The Fire Department clinched first place by splitting with the Electrons. Kinney, Texeira and Newham led the way with 193/538, 203/530 and 182/519, respectively. Dvorak scored 199, 192/568 and Levy, 202/549 for the Electrons.

The Reefers split with the Old Timers I: for the Reefers, Lucas 190, 190/536, and J. Kampe 200/548; for the Old Timers I, Adams 187/524.

The Gnats, trying hard to finish higher in the standings, battled the Black Birds to a 3-1 win. Wilson 190/527, and Van Norman 215/530.

Old Timers II and III split. Potter scored 184/508 and Frei 193/553 for Old Timers II; Tierney 179/480 and Keating 175/483 for Old Timers III.

RED LEAGUE

What a race in the Red League! The standings at the start of last week's games were: Utilities 68½, Biology 68, H.P. Ins 54, Cosmos 53½. By a quirk of the schedule, the final games have Biology vs. Utilities, and Cosmos vs. H.P. Ins. May the best team win!

When you want to observe thunder and lightning on the alleys, watch the big, tall boys. We have three: Jackson, Young and Zahra. When they start the ball, they reach out about a quarter-way down. When the ball hits, Boom! The pins are all over. Sounds like a strike every time. What's their average? Well, for instance, Jackson had a 583 last week.



BOWLING TOURNAMENT TIME AGAIN



The next BNL Mixed-Doubles Bowling Tournament is set for 3:00 p.m. Saturday, May 12th, at the Port Jeff Bowl. Each tournament has been getting bigger and bigger – the last one was subscribed to the limit. This is your chance to make sure you don't get left out.

The rules:

1. A team shall consist of two bowlers, one male and one female. At least one member of each team must be a BNL employee (per BERA definition.)
2. The tournament shall consist of three games per bowler, bowled across six lanes.
3. Handicap (per bowler per game) shall be arrived at by using the standard BNL bowling rule which is 80% of the difference between the bowler's average and 200. Average used must include at least 15 games.
 - a. Bowlers in BNL leagues this season use BNL average as of the week of April 1st.
 - b. Bowlers not in BNL leagues this season, but who bowled in BNL leagues last year, use final BNL average of last year.
 - c. Bowlers not in BNL leagues this season or last, but who bowl in other leagues (this season only), use highest current sanctioned average as of the week of April 1st.
 - d. All others use score of first game for first game average; use scores of first two games divided by 2 for second game average; use scores of first three games divided by 3 for third game average.
 - e. Maximum handicap allowed per game for men is 70 pins; and there is no maximum handicap for ladies.
4. Prizes will be based on scores plus handicaps, and awards given as follows:
 - 1st Place Team** - Two trophies and certificates for two custom fitted bowling balls. (Team High Gross Series.)
 - 2nd Place Team** - Two trophies.
 - 3rd Place Team** - Two trophies.
 - Ladies' Individual High Gross Game** - One trophy.
 - Men's Individual High Gross Game** - One trophy.

The above prizes are guaranteed for the minimum number of tournament entries (30). Additional prizes will be awarded based upon the number of team entries in excess of 30, e.g., 4th and 5th place teams, 2nd place ladies' and men's individual games. No ABC or WIBC prizes!
5. Team entry fee, including the cost of bowling, is \$5.00. Entry blank and fee must be presented at the Recreation Office not later than 2:00 p.m. on Friday, May 4. No entries will be accepted after the first 64 have been received. The fee is non-refundable; only in the event that the minimum number of team entries (30) is not reached will the fee be refunded and the tournament called off. Teams not present and ready to bowl at the start of the tournament will forfeit the team fee.
6. The rules of the BNL Bowling Association are adopted for this tournament except as otherwise stated herein.
7. Decisions of the Tournament Committee (J. Austin, W. Bishop, J. Pontieri, M. Tingen, E. Egler, G. Searles) shall be final.
8. Matchmaker Service: Call Bill Bishop, Ext. 2255, or Marion Tingen, Ext. 2256.

Submit to
Recreation Office

ENTRY APPLICATION

Must be accompanied by
\$5.00 non-refundable fee

1. Lady Bowler (name) BNL Employee (yes) (no)
Average is in League at Lanes.
 2. Man Bowler (name) BNL Employee (yes) (no)
Average is in League at Lanes.
- Received Recreation Office

CLASSIFIED ADS

FOR SALE

1953 CHEVROLET - 6 cyl., hard top, 2 dr. Good running cond. \$150. Ext. 2389 or 2159 after 5:00 p.m. GR 5-1413.

1961 CORVETTE - Silver with white top, 3 speed, positraction, 12,500 miles. \$3,200. H. Spiess, Ext. 2233.

1954 ENGLISH FORD CONSUL - Leather interior, new tires, gd. mech. cond. \$165. SE 2-3338 after 5:30 p.m.

1960 VOLKSWAGEN SEDAN - Mango green, \$1200. Owner leaving country. D. Katakis, Ext. 628.

1960 FORD SUNLINER - Convertible, power steering, power brakes, auto. trans., new tires, white with black & white interior. Excell. cond. Louis, Ext. 451 or SE 2-3378.

1961 WILLYS - 4 wheel drive, with snow plow and big tires with rims for the beach. \$2000. G. Hambley, Ext. 481.

1955 PLYMOUTH SAVOY - 2 dr. std. trans., r&h, 8 cyl., gd. running cond. \$275. D. Janes, Ext. 351.

1956 STUDEBAKER - 2 dr., r&h. No cream-puff, but excell. inexpensive trans. R. Dumont, Ext. 2506.

1954 FORD V8 - 4-dr. Crestline sedan, good regular tires plus 2 snow tires, r&h, in excell. running cond. Frazer, Ext. 398 or AT 6-8205

RANCH HOUSE - 3 bedrooms, full basement, attached garage, storms & screens, oil hot water heat, other extras. ¼ acre corner plot. 2 miles South of Suffolk Community College. \$14,000. SE 2-6270 after 6:00 p.m.

RANCH HOUSE - 6 rms., 3 bedrooms, din. rm. 46'x26' basement, storm windows & doors, tub enclosure, oil hot water baseboard heat, covered patio & attached garage, formica kitchen cabinets, wall oven, black top driveway, 5000 sq. ft. fenced in rear yard, 120' x 100' wooded corner lot. Walking distance to new elementary school and shopping. Located in Patchogue. \$17,250. B. Fox, Ext. 784 or AT 9-1589.

SPLIT LEVEL HOUSE - On wooded half-acre lot in Shoridge Hills. Large living rm., 26' rec. rm., 3 bedrms., 1½ baths, fireplace, laundry, private beach rights. SH 4-9877 evenings.

GARAGE - 14'x20', w/10'x10' extension. Novelty siding. Must be moved off premises. Miscellaneous doors and windows also available. YA 4-3340 after 5:00 p.m.

18' THOMPSON - Completely refinished. Twin 25 hp Johnson with electric starter, zero time since rebuilt. Navy top, new batteries. New running lights. \$1250, Ext. 483 or AT 9-0854.

BETTER CAT - Sail boat. W.A. Finn, Ext. 301 or AT 6-0231.

SPEEDBOAT - Higgins 17'9" Utility speedboat. Chrysler Ace 95 hp motor, fiberglassed new bottom, nautalex cockpit, boat in better than new shape. New cover, cushions, bilge pump, etc. Complete varnished painted and ready to go. Fast and seaworthy for fishing or relaxing. Only one at this sale price. R. Young, Ext. 591.

RUNABOUT - 14' Wolverine, fiberglassed, steering wheel & controls, 25 hp motor, gas tank. \$300. Ready to go. Carol, Ext. 574 or AT 1-9411 evenings.

15'5" LYMAN - Painted and ready to go, with full length boat cover, navy top with side curtains and compass. \$320. Lucas, Ext. 2193.

CRUISER - 23' Chris Craft Express Cruiser, 130 hp Chris Craft eng. Sleeps 2, galley, head, all accessories, new canvas top complete, lines, anchor, cushions, fire extinguisher, excell. fishing boat or day cruiser. Can be seen by appointment. Ext. 574 or HR 3-1435 after 5:00 p.m.

23' CRUISER - Chris Craft, 95 hp fully equipped. New Navy top and curtains. Ext. 636 or AT 6-1352.

16' CRUISERS INC. - 1958, with 1958 35 hp Johnson elec. Used only two seasons. All equip. incl. anchor, lights, remote steering, life preservers, battery. G. Penny, Ext. 2156.

20' AUGIES - (Custom) Sea Skiff, lapstreak constr. 95 hp Chris Craft. All equip. incl. 20 watt radio telephone, submersible bilge pump. \$1100. Ext. 2255.

14' WHIRLWIND - 1958. 1959 Evinrude 35 (purchased 1960). 1961 Tee Nee Trailer. Complete with windshield, wheel, and controls. Varnished and ready. \$685. Ext. 2316.

16' CENTERBOARD SAILBOAT - S/s rigging, outboard bracket, also Tee Nee Trailer with winch. The lot for \$350. Canadian cedar strip canoe, fiberglass covered, 15' with cherry-wood paddles. New cond. \$140. Ext. 2263 or AT 6-0322 evenings.

23' CRUISER - Chris Craft, 95 hp fully equip. New navy top and curtains. Ext. 636 or AT 6-1352

8' PRAM-TYPE DINGHY - Fiberglassed seams, oars, \$45. G. Roeser, Ext. 2578.

15½' LYMAN - Outboard motor, etc. AT 6-8215.

37' CHRIS CRAFT CRUISER - Twin screw, 130 hp, 65 watt S.S. Radio, ohm generator, Fathometer, flying bridge, sleeps 6, forward cabin, 2 heads. \$8,000. AT 1-9467.

BOAT - The flounders are running in the Bay, this beautiful "Queen" of the Patchogue River is in the water ready to go. 19', has cabin, running lights, portable head, 12 hp motor, all in good cond. Must sacrifice \$250. Enid, Ext. 373, or GR 5-7578.

17' THOMPSON - 35 hp Evinrude Lark Elec., Mastercraft Trailer, navy top, side curtains, cockpit cover, anchor, compass, 2 deck chairs, 2 Cruise-a-Day tanks, rod holders, plus other extras. Excell. cond., ready to go. ST 7-1996.

SHORT WAVE RECEIVER - Lafayette HE-10, list \$79.95, speaker, 9 tubes, HE-11, list \$7.95. Excell. cond. Both for \$50. Ext. 423 or AT 1-9721.

TWIN BED - Firm innerspring mattress and matching box spring with metal Hollywood frame. Cost \$90. Price \$49. L. Miller, Ext. 2543.

REFRIGERATOR - 8 cu. ft., runs well, \$18. Walters, Ext. 2469 or HR 2-1038.

LAWN MOWER - Non-pull starter, Mercury, 24-inch cut, 3 hp Briggs-Stratton motor, 1 extra blade, grass catcher attachment, used 1 season, like new. \$45. AT 1-8253.

WANTED

APARTMENT - Young working couple desire 3-3½ room apartment or bungalow for June occupancy. Vicinity of Bohemia, Bayport, Oakdale, or Sayville. Al, Ext. 301-37 or JU 7-1183 after 6:00 p.m.

CHEV. STATION WAGON - 1956 through 1958 with standard trans. V8 or 6 cyl. eng. Nomad preferred but not necessary. Any clean wagon considered. AT 4-0071 after 6:00 p.m.

BICYCLE - Boy's 20" or 24". Good cond. Ext. 691.

MOORING RIG - For 19 footer incl. 150 lb. Mushroom anchor and mooring buoy. A. Coppola, Ext. 2558.

DUCKBOAT - 10-12 foot, with or without netting. AT 1-8253 after 4:00 p.m.

HOMES - For puppies. S. Wichman, Ext. 440.

THREE-BEDROOM HOUSE - To rent for one year, beginning July 1962. Prefer furnished but will consider unfurnished. North Shore or Bellport Area preferred. Write to: Charles Eisenhower, 5209 Wissioming Road, Washington 16, D.C.

LEATHER CARVING TOOLS - Lois, Ext. 2234.

FEMALE WEIMARANER - To breed to a male out of hunting stock. J. Rothman, Ext. 2135.

WANTED DESPERATELY - VOLKSWAGEN - In good condition. Promise to give it a good home. Wilma Flannery, Ext. 301-105.

FOR RENT

COTTAGE - Make your plans now for a summer vacation on beautiful Peconic Bay. 2 bedroom summer cottage at Noyac. Fully equipped. \$100 per wk. J. Chester, Ext. 598.

APARTMENT - 3 rooms, furnished, located in Mastic. 15 min. from Lab. Bright and clean. Rental: \$80 mo. incl. all utilities. AT 1-7666.

UNFURNISHED APARTMENT - 3½ rooms in Patchogue Garden Apartments from May 1, 1962. Rent \$95 mo. GR 5-1744 after 6:00 p.m.

LOST & FOUND

CAT - Lost. Brown tortoise, female. Long haired. Ext. 2520.

GLOVE - Found. Ladies black stretch glove in front of Personnel Office. Ext. 2107.

CARPOOL

Driver wants to join carpool from Huntington Station or Huntington vicinity. Ext. 481, D. Plows.

Paying rider needs ride from South Ocean Avenue, Patchogue. Ext. 2464.

SOLUTION TO CHESS PROBLEM

WHITE	BLACK
1.	1. K x P Check