

# the Bulletin Board

Volume 15, Number 35

Published by BNL Personnel Office

May 8 1962

## OPEN HOUSE MAY 10

As announced in last week's BULLETIN BOARD, BNL employees and their families will have an opportunity to see the Laboratory this Thursday, May 10. The list of the major research facilities to be open is repeated below from last week's paper for your convenience. In addition to these, there will be exhibits operating in the Exhibit Hall (184).

Exhibit Hall (184)  
Research Reactor (701)  
Parts of the Cosmotron (902)  
Metallurgy Building (480)  
Beam Research Reactor (120)  
Radiation Devel. Laboratory (528)  
The Hot Laboratory (801)  
New Nuclear Engineering Bldg. (815)  
The new Computing Facility (459)  
New Target Building of the AGS (912)  
Volatility Studies (527)  
Reactor Physics (135)  
Critical Assembly Facility (525-526)  
Instrumentation Laboratory (194-426)  
The Calibration Laboratory (348)  
Meteorology Laboratory (51)  
Health Physics Laboratory (144-145)  
Parts of the Medical Res. Center (490)  
The old Nuclear Engineering Bldg. (197)  
The Biology Department with a special exhibit set up in the greenhouse (463).

Information on additional places to be open for visitors and maps of the site can be obtained at the Brookhaven Center on May 10 from 3:00 p.m. on.

## VISITORS

A group of graduate students from Lehigh University will visit the Laboratory on May 7.

The Physics Department Visiting Committee will meet at BNL on May 7 and 8.

The Director and several staff members from the Naval Ordnance Laboratory will visit BNL on May 9.

There will be a meeting on reactor operations dealing with AEC research reactors on May 10 and 11.

## MICROMET SALES

Orders for Micromet, accompanied by full payment, are now being taken at the Personnel Office, 58 Brookhaven Avenue. No orders will be accepted after Friday, May 25.

## G. NORRIS GLASOE APPOINTED ASSISTANT DIRECTOR



Dr. Maurice Goldhaber, Director, announced the appointment of Dr. G. Norris Glasoe as an Assistant Director of the Laboratory effective May 1. Dr. Glasoe's principal responsibilities will be in the area of technical services.

Dr. Glasoe came to Brookhaven in 1952 as Associate Chairman of the Physics Department, and he has held that position ever since. He was born in Northfield, Minnesota, received his B.A. from St. Olaf College, and his Ph.D. in physics from the University of Wisconsin in 1930. He later became an Instructor at the University of Wisconsin then Instructor at Columbia University. In 1941 he joined the staff at the Radiation Laboratory at Massachusetts Institute of Technology. After the war, Dr. Glasoe taught at Rensselaer Polytechnic Institute, where he was a Professor in the Physics Department until joining the staff at BNL.

## LAWN BOOKLET

In Spring, a homeowner's fancy turns to his lawn. Copies of the booklet "Planting and Maintaining a Lawn" by Ed Hunter of Plant Maintenance are available at the Personnel Office, 58 Brookhaven Avenue.

## FILM FEATURING BNL SHOWN IN NEW YORK

A short color film on the peaceful uses of atomic energy, which was partially filmed at Brookhaven was shown at the fourth annual American Film Festival in New York last week.

The 16 mm film, produced by Francis Thompson under the auspices of the Atomic Energy Commission, features a new type of triple projection, allowing an unusual instant, multiple-image treatment of a single text. With the new projection system, which its originators call triptych, images are transmitted onto a wide, three-panel screen by three synchronized, interlocked projection machines. The triptych image innovation allows not only the projection of a single wide image, but also the use of three different images simultaneously. Actual photographs are coupled with animated schematics in order to explain and clarify for laymen the technical subject matter.

Last week's showing of the triptych film in New York was the first time it has been formally presented to an audience in this country. Since it was completed, this film has served to introduce the AEC's Atoms at Work Display that has toured Latin American cities during the past two years.

## TIAA - CREF

Participants in the Laboratory Retirement Plan may elect to have all premiums applied to TIAA, the fixed annuity, or may elect to have a percentage of premiums applied to TIAA and the remainder (up to 50%) to CREF, the variable annuity.

These percentages may be changed once a year, effective July 1. All participants who wish to change current percentages must make application at the Personnel Office **prior to June 1, 1962.**

## THEATRE GROUP

Further tryouts for "The Moon Is Blue" will be held Friday, May 11, at 12:15 p.m. (lunchtime), in the Theatre. Anyone interested, but not able to make that date, call J. Jach, Ext. 634.

**BERA FILM SERIES****"THE LAW IS THE LAW"**

With Fernandel and Toto

**May 10 Lecture Hall 8:30 p.m.**

This hilarious border dispute which involves smuggling, bigamy, and national loyalties on the Franco-Italian border, provides a rare opportunity to see two of the top comic talents pitted against each other. The officiousness of petty government is mercilessly examined in this satirical spoof in which Fernandel plays a French customs official plagued by his most "intimate" enemy Toto, an Italian smuggler of indefatigable ingenuity.

The short subject is "Harlem Wednesday," in which a group of Harlem scenes by the painter Gregorio Prestopino are presented against a jazz background. The paintings and sketches are arranged so as to suggest activities of an ordinary midweek Harlem day.

**SEVENTEENTH  
BROOKHAVEN LECTURE**

By: A.H. SPARROW  
BIOLOGY DEPARTMENT

Title:

"THE ROLE OF THE CELL NUCLEUS  
IN DETERMINING RADIOSENSITIVITY"

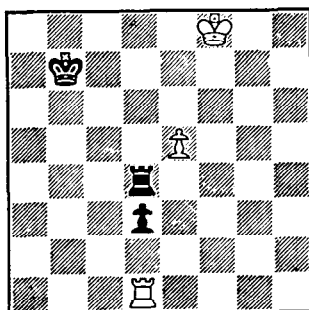
Lecture Hall, 8:00 p.m., Wed., May 16

A buffet supper (\$2.75) will be served at the Brookhaven Center before the lecture, beginning at 6:00 p.m. Reservations should be made at least one day in advance by calling Ext. 2302 before 5:00 p.m., or Ext. 2453 in the evenings.

Refreshments will be available in the Research Staff Lobby following the lecture.

**CHESS PROBLEM**

This week's problem looks easy, but watch out - it is far from it. It is White's move. Answer elsewhere in this week's BULLETIN BOARD.



White to Win

*Arrivals and Departures***Welcome to BNL**

AGS	
Roger Anderson	Ext. 2478
Edwin S. Krzeminski	2412
Jan Van der Lans	2627
APPLIED MATH	
Donald Engelberg	2579
DIRECTOR'S OFFICE	
Robert H. Masterson	435
MECHANICAL ENGINEERING	
Morris Reich	2516
PHYSICS	
Karin Hansen	574
Laurence T. Trueman	2622

**Leaving BNL**

FISCAL	
Margaret Prete	
NUCLEAR ENGINEERING	
Emanuel Yellin	
PHYSICS	
Ida P. DeWick	
Nikolaus Fiebigler	

**RECREATION ARTICLES**

All Recreation articles for publication in the BULLETIN BOARD should be presented at the Recreation Office no later than Friday for publication in the following week's issue.

**GYMNASIUM**

The Gym will be **closed** for all activities due to work being done on the floor from May 18 to 28.

**BRIDGE CLUB**

You are East holding S. 3, H. A 9 8 5 2, D. 9 6 4 2, C. J 5 3. The bidding has gone N-1D, S-1S, N-2S, S-4S. Your partner leads the king of hearts and dummy comes down with S. Q 6 4 2, H. 10, D. A K Q 10 5, C. 8 7 2. How do you plan the defense? Decide before reading on.

This problem was faced by most defenders in last week's game, and they all must have been napping, as every declarer made his contract. Clearly, if any tricks are to won by the defense, they must be found in the club suit and fast! Otherwise declarer will draw trump and pitch everything on dummy's five sure diamond tricks.

Give yourself 100 points if you overtook the heart king with the ace and led back the jack of clubs (the only hope of winning three club tricks). Declarer's hand was S. A K J 8 7 5, H. 6 4 3, D. 8, C. K 6 4. Give yourself 50 points if you overtook the heart king and led back a little club. This at least holds the hand to ten tricks.

Every Tuesday a new bridge problem appears on the Cafeteria bulletin board. You have until the following Monday to send in your solution and win two decks of cards or some other appropriate prize.

Thursday, May 10, at 8:00 p.m. is the date of the next duplicate game. The Individual Championship will be held on June 7. Notify Bob Dvorak, Ext. 618, if you wish to enter.

**FISH FLASH!**

Reports came in over the weekend from an oldtime Eastern fisherman that school bass are being taken in quantity on the west side of Shinnecock Inlet. A report from one of our Reactor Physicists has the flounders jumping in the boat on the bayside with catches going up to 2 pounds.

Dave Papa nosed out John McCafferty's white perch with a 24 lb. 1 oz. cod with 415 points for the April prize. The award will be made by Chairman Jim Baranosky in the near future.

This year's monthly prizes are practical awards - things you would like to have but rarely buy. The Committee is building a display case to show the awards, which will be ready shortly.

**Don't forget!** Enter all your catches - big or small. There are annual awards for your point accumulation. Even if you don't win a monthly award, **YOU** could be FISHERMAN OF THE YEAR.



## NEXT BERA DANCE

The pleasure of your company is requested at BERA's BLUE HAWAII DANCE on Friday, June 8. Atmosphere will be provided by the Medical Department and the Stan Laurence Orchestra. Informality will be the keynote - bright aloha shirts, slacks or bermudas for the men, and all sorts of Hawaiian attire for the women (mumuus, sarongs, grass skirts, colorful blouses and skirts). However, we expect that tourists in ordinary attire will also "make the scene."

## SOFTBALL

### Laboratory League

The game between the E.O.A. and the Bubble Boys scheduled for May 2 was drizzled out.

On May 3, Medical edged the Health Physics boys in a 7-5 thriller. Tom Miller, starting pitcher for the Medical-men, collected two strike outs - a remarkable feat in slo-ball. Don Sacker, possibly stealing the game from Health Physics, made not one, but two, "impossible" catches in short field. For Health Physics, Bob King gave notice to future opponents by lining a home run past the center field, driving in two of the H.P. runs.

## FENCING CLUB

The Fencing Club will meet on Wednesday, May 9, from 5:00 to 7:00 p.m. at the Gymnasium.

## SOLUTION TO CHESS PROBLEM

What might be called the main line runs 1 P-K6, K-B2 2 P-K7, R-B5 check 3 K-K8, R-B6 4 R-B8 check, K-Q3 5 K-Q8, R-K6 6 R-B3! P-Q7 7 RxR, P-Q8(Q) 8 P-K8(Q), etc.

If Black plays 3... R-Q5, another fascinating line is revealed: 4 K-B7 (see next paragraph for 4 R-KB1), R-B5 check 5 K-K6, R-K5 check 6 K-B6, R-B5 check 7 K-K5, R-B6 8 K-K4, R-B7 (note that any earlier... R-B7 is refuted by RxP) 9 KxP, K-Q2 10 K-K3, etc.

On 4 R-KB1 in the last line, White appears to win - but watch! 4... P-Q7 5 K-B8, P-Q8(Q) 6 RxQ, RxR 7 P-K8(Q), R-Q1, etc. Or 5 K-B7, R-B5 check! 6 RxR, P-Q8(Q) 7 P-K8(Q), Q-R4 check and Black recovers the Rook next move, for a draw. Or, once more in this last line, if 7 R-B4 check, Black defends with 7... K-Q3! 8 P-K8(Q), Q-Q4 check, etc.

Finally, a footnote on the 6 R-B3! of the main line: on 6 R-Q1, Black draws by 6... K-B4 (7 P-K8(Q), RxQ check and Black supports his Pawn till the Rook has to be given for it).

## MIXED DOUBLES TOURNAMENT



3:00 p.m.

Port Jeff Bowl

Saturday, May 12

Enough entries have been received to guarantee 24 prizes. Bowling balls, shoes, bags, trophies and cheer go to the winners.

Don't be late. Register at the desk when you arrive. The tourney begins at 3:00 p.m. **sharp**. Please come early.

NOTE: There will no practice bowling on the tournament lanes after 2:30 p.m.

## BULL'S EYE



Join the action with our Rifle-Pistol Club! All you have to do is call the President, Roy Domish, Ext. 2387, for information.

## DISCOUNT TICKETS

Discount tickets are currently available at the Personnel Office, 58 Brookhaven, for "Subways Are for Sleeping." The tickets are valid until May 18.

The world does not pay for what a person knows. But it pays for what a person does with what he knows.

## UPTON RIFLE-PISTOL CLUB

High score for the season was shot by Al Lucas who shot a 152 in this week's large bore tournament. J. Diener was second with 149 and C. McClelland was third with a 144.

There is no match scheduled for Mother's Day, Sunday, May 13.

## CLASSIFIED ADS

## FOR SALE

1957 TRIUMPH ROADSTER - TR-3, metallic silver/black. Completely rebuilt mechanically, new top, side curtains and interior. Many extras. Ext. 2273 or GR 5-3109 after 6:00 p.m.

1953 PLYMOUTH COUPE - Runs well, needs muffler, \$65. Ext. 2497, Hildebrand, or HR 3-5025 evenings.

1960 MGA - Black Roadster, beige interior, r&h, wire wheels, good tires, sliding windows, Tonneau, shop manual. Sue, Ext. 442 or TU 4-8571 after 6:00 p.m.

1956 OLDSMOBILE - 88, Holiday, 4 dr., hard top, \$375. J. Reiff, Ext. 481.

1954 FORD CONSUL - 4 dr., standard shift, gd. tires, leather interior. \$165. SE 2-3338 after 6:30 p.m.

1958 CHEVROLET - Sedan, good cond., snow tires, r&h, auto. trans. \$950. Also: Channel Master 8 trans. radio, unused. \$35. J. Medd, Ext. 347.

1956 OLDSMOBILE 88 - 2 dr. Sedan, auto. trans., r&h, blue & white, good cond. Clean. \$550. A. Minardi, Ext. 346 or YA 4-3581.

HOUSE - Beautiful all year round house, 2 bedrooms on main floor, one bedroom in finished attic, 18x20 living rm., large kitchen, all improvements, landscaped plot 100x200, with trees, hot water heat. Furnished, \$19,990; unfurnished, \$18,490. Finished cellar. WA 9-4704.

8' PRAM - Painted, with oars, all new. \$70. F. Rumph, Ext. 2221.

OLD TOWN SKIFF - 15½', 15 hp. Evinrude. \$200. Bob Lindgren, Ext. 434.

21' NARRASKETUCK SLOOP - 2 sets of sails, working and racing, all in excell. shape. H. Brenneis, Ext. 301, or HR 3-3942.

MOTORCYCLE - Classic Model 841, Indian. 45 cubic inches, opposed cylinders, shaft drive, dual carburetors, brand new Pirelli racing tires. Runs perfectly. \$175. R. Louttit, Ext. 738.

BICYCLE - 20" girls, lights, good cond. \$12. AT 1-8529.

17" MOTOROLA TABLE TOP TV - Wonderful shape. \$35. Joe, Ext. 627.

TENT - 9'x12' umbrella tent with extension, no center pole, sleeps four comfortably, used one season, good cond. \$50. Ext. 2187, Richter.

CAMERA - Nikon "S," f1.4, with case. \$130. F. Mo, Ext. 2682.

INTERESTED IN GOING TO EUROPE? - On chartered flight, date August 10, 1962 to Amsterdam and return date September 10, 1962 from Amsterdam. Approximate fare, \$262. P.S. Tu, Ext. 345.

DUCK BOAT - 11', 3½ Scott motor, \$75. AT 1-9564.

PHONOGRAPH - Columbia Hi-Fi. Any reasonable offer. J. Jach, Ext. 634.

LAWN MOWER - Grant Reeltype, Briggs & Stratton motor in good cond. \$30 or other offers J. Jach. Ext. 634.

1960 PONTIAC CATALINA - Coppertone, Stock, 360 hp eng., w/w, r&h, p.b., hs rear end. 3 dual carbs., tinted glass, w/s washers, undercoated, plastic slip covers, 20,000 miles. Tip top shape, Steve, Ext. 445.

VIBES (JENCO) - 5 mos. old, finished in Blue Pearl. Excell. cond. Tom, Ext. 301-22.

18' THOMPSON - Off shore, 35 hp Johnson, two tanks, elec. start., plus generator. Windshield, Navy top plus full cover, running lights and etc., etc. Sonny, Ext. 2154 or PA 7-4925.

1953 MERCURY - 4 dr., r&h, new points, plugs, brakes, head gaskets. Best offer over \$100. Ext. 783 or 2528.

## WANTED

UNFURNISHED HOUSE - 5 or 6 rooms for immediate occupancy. Ext. 435 or 507 evenings.

APARTMENT OR SMALL HOUSE - 2 or 3 bedrooms, kitchen, furnished, for year round occupancy beginning June 18. Vicinity of Lab. Nick Reiss, Ext. 2551.

HOME - For puppies, 8 weeks. S. Wichman, Ext. 440.

SOMEONE TO SHARE DRIVING - On trip down south in direction of Louisiana the first week in June. Ext. 2445.

TENT - To rent for month of June. Stocklin, Ext. 733.

CHILD'S TRICYCLE - In reasonable cond. Coppens, Ext. 650 or 701.

2 DR. FORD - 36-48, need not run, body in fair cond. A. Esper, Ext. 2201.

## FOR RENT

APARTMENT - 3 rooms in Mastic, 10-15 min. from Lab., new furniture, rooms will be painted, all utilities inc. \$90 per mo. Ext 337.

HOUSE - Rocky Point, 15 min. from Lab. Modern 3 bedroom Ranch, unfurnished, large corner fireplace, all elec. kitchen with dishwasher and washing machine incl. Rights of private beach available. Call Ext. 2245 or SH 4-9861 after 6:00 p.m.

HOUSE - Furnished, 3 bedrooms, comfortable, sunny in winter, secluded garden, view on bay, private beach. Sept. 1962 - June 1963. Blue Point, N. Elliott, Ext. 679 or EM 3-6596.

HOUSE - June 22 to Sept. 3, 8 rooms, 4 baths, all conveniences, 2 car garage, Sound Beach. All conveniences: dishwasher, clothes washer, dryer, steam iron, 2 TV's, one is colored, 8 beds, screened porch, flower gardens, large lawns. J.S. Medd, Ext. 347.

## LOST &amp; FOUND

COLLEGE RING - Found. 1954 C.W. Post College ring. K on stone. George, Ext. 391.

ARISTO STOP WATCH - Found in Reactor (701) conference room. Ext. 394.

## CARPOOLS

Need ride from South Ocean Ave., Patchogue. Ruth Cook, Ext. 2464 or 2467.

Driver would like to join carpool from vicinity of South Country Shore's development, East Patchogue. C. Shapiro, Ext. 345.