

the Bulletin Board

Volume 15, No. 39

Published by BNL Personnel Office

June 5, 1962

EIGHTEENTH BROOKHAVEN LECTURE

by JOHN BLEWETT, Accelerator Dept.
Title: "Accelerators of the Future"

Lecture Hall, 8:00 p.m., Wed., June 13

A buffet supper (\$2.75) will be served at the Brookhaven Center before the lecture, beginning at 6:00 p.m. Reservations should be made at least one day in advance by calling Ext. 2302 before 5:00 p.m., or Ext. 2453 in the evenings.

Refreshments will be available in the Research Staff Lobby following the lecture.

FOURTH PEGRAM LECTURESHIP

This year, the Pegrarn Lectures will be given in June rather than in the autumn. The George B. Pegrarn Lecturer for 1962 is Professor Derek J. de Solla Price of Yale University, who is an eminent historian of science. In his lecture series, entitled "Little Science, Big Science," Professor Price will consider the changing circumstances in the life of the scientist since the late nineteenth century and the profound effects which these changes have had on the behavior and attitude of scientists as well as on their organizations and publications. The dates and topics of the individual lectures are as follows:

PROLOGUE TO A SCIENCE OF SCIENCE, Tuesday, June 19; GALTON REVISITED, Friday, June 22; INVISIBLE COLLEGES AND THE AFFLUENT SCIENTIFIC COMMUTER, Wednesday, June 27; and POLITICAL STRATEGY FOR BIG SCIENTISTS, Friday, June 29.

TV PANEL DISCUSSION

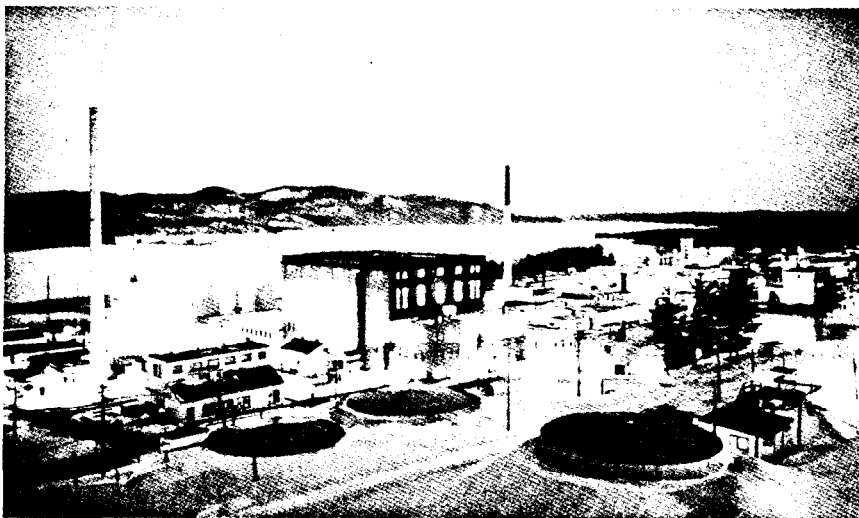
In conjunction with the E.J.C. Nuclear Congress, Bernard Manowitz of the Nuclear Engineering Department has helped to organize a panel discussion among prominent American leaders on the subject, "How the United States Should Spend its Research and Development Dollar."

The panel consists of Dr. James R. Killian, Jr., Congressman Chet Holifield, Dr. Warren Weaver, Dr. Charles Allen Thomas, and Mr. Dan A. Kimball.

A portion of the discussion will be televised on EDITOR'S CHOICE, Channel 7, Sunday, June 10, at 3:00 p.m.

CANADA'S CHALK RIVER

With the following article on Canada's Chalk River facility, the BULLETIN BOARD continues its series on BNL's sister laboratories in this country and similar laboratories abroad.



Night view of the Chalk River establishment of Atomic Energy of Canada Limited.

Canada's main atomic research and development center is located at Chalk River, Ontario, and is operated by the crown company, Atomic Energy of Canada Limited. AECL is an agency of the federal Canadian government which functions as a company rather than as a government department, but can act only as an agent of the crown. Its head office and a Commercial Products Division are located in Ottawa and a Nuclear Power Plant Division is located in Toronto. Chalk River, where approximately 2500 are employed, is the main center of activity.

In brief, the two main objectives of AECL are (1) to carry out applied research and development to promote the practical uses of atomic energy, and (2) to conduct fundamental research in the field of atomic energy. In the latter area of activity, particular emphasis is placed on research that utilizes special equipment, such as research reactors and large accelerators, available at Chalk River. Chalk River has five experimental reactors - ZEEP, NRX, NRU, PTR and ZED-2. The 40,000 kilowatt (thermal) NRX reactor went into operation in 1947 and the 200,000 kilowatt (thermal) NRU reactor was put into service in 1957. Both reactors are used for nuclear power experiments, for fundamental research and to produce radioactive isotopes and plutonium. The NRU reactor was the first one in the world to be refuelled routinely while the reactor continued to operate. The three low-power reactors, ZEEP, ZED-2, and PTR, are used for different purposes, such as: testing fuel rod arrangements for power reactors, determining the reactivity of fuel samples, and studying the neutron absorbing properties of materials.

In addition to the research reactors, there are other large research machines, including a 10 million electron volt tandem Van de Graaff accelerator.

(Continued on following page)

Chalk River — (continued)

ator, and a 3 million electron volt Van de Graaff generator. Using these reactors and accelerators, fundamental and applied research and development is carried out in physics, metallurgy, biology, medicine, chemistry and engineering.

Canada was one of the pioneers in the application of radioactive isotopes in research, medicine, agriculture and industry. The Commercial Products Division of the AECL processes and sells radioactive isotopes produced in the Chalk River reactors and also develops new uses for isotopes and equipment for their application. It is the policy of AECL to contract out to industry as much of the development work on nuclear power as is practical. However, much of the work, particularly fuel development, depends on access to irradiation facilities that are only available at Chalk River. Industry, therefore, works closely with the Chalk River staff.

A reactor school has been established at Chalk River to give both Canadian and foreign scientists and engineers intensive twelve-week courses that emphasize the type of research reactors and atomic power stations developed in Canada. Students and some university staff members are employed for summer work, visits are arranged for groups of students at all levels, and talks and lectures by Chalk River scientists are given at a variety of gatherings from school groups through service clubs to highly technical meetings.

CHILDREN'S SUMMER PROGRAM

Once again our Recreation Program will feature a "Summer Program" for children of laboratory employees. The supervision will be provided by two experienced instructors.

Registration of each child must be made in advance and parents will be required to sign a responsibility form agreeing to the necessary regulations of the program.

Both the On-Site Play Sessions and the Swimming Lessons will begin the week of July 10 and continue for a 7 week period through August 24. A special activities day has been planned at the Swimming Pool to climax the activities on Tuesday, August 28.

On-Site Play Sessions

The morning portion of the program will be for children of on-site residents. Children must be at least 5 years of age. These sessions will be held each morning from 9:00 a.m. to 11:30 a.m. at the Recreation Building in the Apartment Area.

Swimming Instruction Classes

The afternoon segment of the program will be open to all employees' children. Classes will be conducted at the pool weekdays from 1:00 p.m. to 2:30 p.m. Each child, age 8 or over, will be scheduled for one lesson per week.

Watch THE BULLETIN BOARD for all details, including registration forms, fees, schedules and other specific information.

*Arrivals and Departures***WELCOME TO BNL**

AGS		
John J. Gabusi	Ext. 2553	
Richard L. Lane	2416	
ARCHITECTURAL PLANNING		
Mildred J. Kreye	2564	
BIOLOGY		
Norika Ohta	2479	
COSMOTRON		
Leivis A. Jacobson	772	
NUCLEAR ENGINEERING		
Geoffery F. Champlain	2468	
PHYSICS		
George T. Mulholland	2627	

LEAVING BNL

FISCAL	
Roberta A. Marinuzzi	
MEDICAL	
Mary G. Wiggins	
NUCLEAR ENGINEERING	
Carmine Persiani	
PHOTOGRAPHY & GRAPHIC ARTS	
Fredericka Governale	
PHYSICS	
Josephine Capurro	

WESTBURY MUSIC FAIR

Discount tickets for the Westbury Music Fair are available at the Recreation Office, 3 Center Street, on MONDAY, WEDNESDAY and FRIDAY, 12:00 NOON to 2:00 P.M. ONLY. Payment must be made by check, payable to the Westbury Music Fair, and must accompany order.

Reservations must be made at least two days in advance.

IN MEMORIAM**DR. HARTLAND S. SNYDER**

February 24, 1913 - May 22, 1962

The following telegram has been received by the Director of BNL from Dr. Victor Weisskopf, Director General of CERN Laboratory, Geneva, Switzerland:

"Staff of CERN deeply shocked at death of Hartland Snyder. Send you and all Brookhaven staff expression of most heartfelt sympathy."

BERA FILM SERIES**"MEXICAN BUS RIDE"****"NARCISSUS"****"OBJECT LESSON"****Thurs., June 7 - 8:30 p.m. - Lecture Hall**

"Mexican Bus Ride" is one of the outstanding situation comedies to come out of Mexico. The story revolves around a girl who travels across Mexico on business. The extraordinary experiences she and her old fellow travelers encounter add up to a delightful evening's entertainment.

"Narcissus" and "Object Lesson" are two Cinema-16 experimental film releases. Both are prize-winning films and are of particular interest because of their unusual camera techniques.

VISITORS

The annual summer conference of the Biology Department will take place from June 4 to June 6.

The Nuclear Congress participants will visit BNL on June 7.

SOFTBALL



by ROGER CALDWELL

As high priest Neil Roberts muttered mystic incantations of "Bawhl", "Ster-a-ike", and "Yu oault", the Blue Jays laid another sacrificial victim on their gory altar, massacring Metallurgy 16-4. Adding to the ritual, warriors Haller, Carstens and Stohr each did a wild-eyed dance around the sacred diamond, their bats dripping blood.

Skelly Frei boomed a big one for the Old Timers, homering in all their runs. But the fine defensive play and timely hitting of the Untouchables proved too much for the Ancient Gents as they bowed 12-3 in an interleague game.

Electronics took the measure of Biology, 22-10. Joe Mead broke up a tight game in the bottom of the sixth with a beautifully placed triple down the first base line.

The Medicalmen continued their penant march, downing the E.A.O. 18-8. But beware Health Physics next week; the hungry tiger lurks in ambush, licking his wounds.

OTHER SCORES

Cosmotron	9	Phoubars	8
Upton Downers	14	Dirty Sox	2
Untouchables	14	Upton Downers	9

STANDINGS

Brookhaven League		Won	Lost
Blue Jays		4	0
Metallurgy		3	1
Cosmotron		2	3
Old Timers		2	3
Phoubars		1	2

National League

Untouchables	4	0
Electronics	3	2
Biology	1	3
Dirty Sox	1	4
Upton Downers	1	4

Laboratory League

Medical	4	0
Bubble Boys	3	1
Gnats	1	2
Health Physics	1	3
E.A.O.	0	3

GYM CLOSED - POOL OPEN

The Gymnasium will be closed for all physical activities from Thursday, May 17, to Monday, June 11, for floor re-finishing, Biology Conference and the BERA dance.

BLUE HAWAII

The time has come for all hep Lab employees to Go HAWAIIAN!

Kick off your shoes, girls, slip into muu muu (for divine comfort), grass skirt or sarong (for divine effect) or plain old Bermudas or slacks. And men, the night may be wiltingly warm, so don your aloha shirts (a prize will be awarded for the craziest one), Bermudas, slacks or whatever Island attire your imagination can contrive - and let's have a Hawaiian "ball." The versatile Stan Laurence Orchestra will play everything from Hawaiian music dripping with moonlight and atmosphere to a scorching twist (plenty of professional care on hand to treat twist exhaustion).

Bring your own bottle - mixers, beer, sandwiches, and coffee available at a nominal fee. Plenty of ice, potato chips and pretzels "on the house."

The Medical Research Center has put forth the effort - now let's see you all turn out for the last dance until the fall. Let's make it one to remember. ALOHA!

Friday night, June 8

Door Prize

Tag Dance

At the Gym

Refreshments

Ladies' Choice

9:00 p.m. - 2:00 a.m.

Multiplication Dance

Hula Contest

ATTENTION BNL EMPLOYEES

Have you heard the latest? We're planning for the greatest OPERATION GET-TOGETHER, ever.

July 28 is the date, I'm sure you can hardly wait,

For the music, fun, food, games, and such.

There'll be contests galore, and, oh, so much more

That the money you pay is not enough.

So BERA lends a helping hand, financially, you understand,

To feed you and the immediate family.

There'll be thousands here, a crowd! But, remember no guests are allowed,

At this OPERATION GET-TOGETHER No. 5.

The day is drawing near when tickets will be here,

Let's hope you won't forget to buy them.

They're just a dollar fifty, a price that's really thrifty,

For the "gay blades" who are eighteen plus . . .

While that younger son and daughter only pays a quarter,

And your infant, lucky tot, gets in free.

So come one, come all, we're going to have a ball

At OPERATION GET-TOGETHER No. 5.

KIDDE KOMPACT
FIRE EXTINGUISHERS

A group purchase of the newest Kidde two and one-half pound Dry Chemical Fire Extinguisher has been arranged by Personnel Services. This extinguisher, approved by the Underwriters' Laboratories and the U.S. Coast Guard, has a low cost, quick replacement cylinder which makes recharging a matter of minutes.

The list price of the extinguisher is \$11.95. The group purchase price is \$6.75. A supply of extinguishers and replacement cylinders is now on hand and may be purchased immediately at Personnel Services, 58 Brookhaven. For additional information, call Ext. 2106.

POOL SCHEDULE CHANGES

The pool will remain on its winter evening schedule through Friday, June 15.

TUES. - WED. - FRI. 7:00 - 10:00 p.m.

THURS. 5:00 - 10:00 p.m.

Beginning Monday, June 18, the summer schedule of rates and hours will be in effect as follows:

POOL OPEN MONDAY THROUGH FRIDAY

2:30 p.m. to 9:30 p.m.

DAILY ADMISSION RATES

Employee.....	\$.35
Family member.....	.35
Guest.....	.60

SEASON TICKETS

(June 18 to August 31)

Employee.....	\$ 5.00
Family.....	10.00

Tickets will be on sale at the Pool Office.

SOLUTION TO CHESS PROBLEM

R x N is a win for White because Black's Q x R will result in B-Q5 Check and Mate in two.

CLASSIFIED ADS

FOR SALE

1959 CHEVROLET - Std. shift, 2 dr. sedan, 28,000 miles. Brand new car-transportation or better. \$1000 you drive. GR 5-4596 days till 4:00 or Sat. and Sun. all day. Ext. 2120 after 5:00 weekdays. J. Soler.

1959 RAMBLER CLASSIC - Station wagon, auto. trans., r&h. H. von Koch, Ext. 629.

1956 FORD - V8, auto., r&h, good cond. \$360. J. Wittman, Ext. 2695.

1957 FORD FAIRLANE - ww, 8 cyl., gray. \$550. AT 6-0988.

1959 FORD FAIRLANE - White and light green, V8, std. trans., safety belts, new tires and shock absorbers, etc. Excell. cond. Reason for selling - leaving country. Dr. B. Persson, Ext. 301-69 or 522 evenings.

1953 PONTIAC - 2 dr. sedan, in good cond. 78,000 miles. Ext. 337.

1961 CHEVROLET IMPALA - Hard top coupe, light green, r&h, seat belts, 4 new tires, like new, only owner driven. Owner leaving country. \$1975. Jansen, Ext. 301.

1961 VALIANT STATION WAGON - Standard trans., many extras. Reiff, Ext. 481.

1961 AUSTIN HEALEY - 3000, four seater, never raced, new exhaust system, looks and runs like new, will consider trade-in. \$2000. Ext. 2553.

1950 CHEVROLET - Good tires, runs well. \$60. J. Ruscica, Ext. 373.

1952 CONSUL - (English Ford), good oper. cond., excell. mileage, leather interior, 4 good tires, r&h, windshield washer. Asking \$160. M. Rothbart, Ext. 680.

HOUSE - 4 bedroom Cape Cod, 2 large bedrooms, 1/2 bath and storage area upstairs. 2 bedrooms, living room and wall to wall carpeting, kitchen, dinette and full bath on main floor. Closets galore. 80% finished basement includes mahogany paneling, built-in bar, corner couch, and tiled ceiling. 1 1/4 acre plot of which half is cleared and landscaped. Oil hot water heat. 14x24 attached garage. Bohemia. \$18,500 firm. Ext. 2201 or LT 9-2489.

HOUSE - 7 rooms on wooded, landscaped, half-acre in beautiful Shoreridge Hills. 3 bedrooms, large living room plus 26 ft. rec. rm., laundry, stone fireplace. Private beach rights, many extras. \$18,500. AT 6-0774.

HOUSE - Split level, 3 bedrooms, playroom, washroom, many extras, near water, excell. location, South Country Shores, East Patchogue. Priced to sell. AT 9-0632.

HOUSE - 6 room Cape Cod on one acre, 3 bedrooms, 1 1/2 baths, 27 ft. living room, fireplace, Delco heat, full basement, 2 car garage with breezeway. \$22,500. SH 4-2241.

10 FT. DINGHY - With 3 1/2 hp Evinrude. \$120. Ext. 2263.

18 FT. THOMPSON - Completely refinished, twin 25 hp Johnson with electric starter, zero time since rebuilt. Navy top, new batteries, new running lights. \$1050. Ext. 483 or AT 9-0854.

15 FT. 5 IN. LYMAN RUNABOUT - With navy top and full length boat cover. \$290. Lucas, Ext. 2193.

ORGAN - Wurlitzer two manual spinet, model 4100, with complete set of chord buttons added. Solid walnut Italian Provincial cabinet, one year old, little use. Cost over \$1300. Gordon, Ext. 2308 or EM 3-6155 from 6:00 to 8:00 p.m.

TV - Admiral, 17 in. portable, used very little. in excell. cond. Original cost over \$150. Gordon, Ext. 2308.

GRANCO AM-FM Radio - \$10. Good cond. Ironing table, moderate cond. \$2. J. Lowe, Ext. 2218 or 2612.

CIRCUIT BREAKER PANEL - Federal Pacific, Stab-Lok, 20 Breaker stations. 3 30 amp breakers; 6 15 amp and 2 20 amp breakers. Make offer. Warren, Ext. 445.

BICYCLE - Schwinn, 26 in., balloon tires, knee action and lock on front shaft, excell. cond. \$25. Ext. 597.

COUCH - Comfortable, innerspring, opens to double bed, needs slip cover. \$8. Ext. 353.

REFRIGERATOR - 9 cu. ft., Crosley Shelvador with freezer compartment. Clean, good cond. \$30. Bob, Ext. 2561.

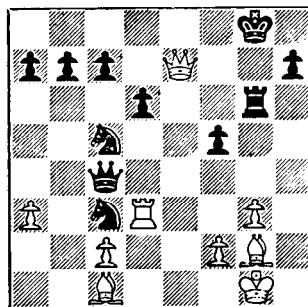
MICROSCOPE - Leitz-SM type, monocular, practically unused. \$420. H. Lutz, Ext. 2356.

LAWN MOWER - One reel type gas power. Best offer takes it. AT 6-0614 after 6:00 p.m.

PROPERTY - Bayport, 137x200 corner lot at Seaman Ave. and Woodland Dr. AA zoning, lovely trees. \$5,400. HR 2-0628.

CHESS PROBLEM

In this week's problem, Black has two more pawns than his opponent, but it is White's move and win. Answer elsewhere in this week's BULLETIN BOARD.



GARDEN TRACTOR - with 25 in. reel mower, 20 in. sickle mower, 8 in. plow, and 36 in. disc harrow. Needs 3 - 5 hp motor. Bob Williams, Ext. 2369.

SILVER DOLLAR COLLECTION - 100 different dates and mints, 17 extra. Any over face value considered. Nate Carter, Ext. 2339.

14 FT. RUNABOUT - Fibreglass bottom, 15 hp Evinrude outboard and a Mastercraft trailer. All in excellent condition for only \$350. G. Sabine, Ext. 391 or JU 8-5586.

WANTED

SAILING BOAT ACCESSORIES - Including outboard motor (approx. 5 hp), bilge pump, awning, spinnaker pole, life jackets or cushions, compass, etc. EM 3-9516 or Ext. 617 from June 11.

BOAT TRAILER - Light weight, for 10-foot pram. C. Swartz, Ext. 744.

FILE CABINET - Second hand, 3 or 4-drawer, reg. size. Nate Carter, Ext. 2339.

HOME - For kittens, 3 male, 1 female. Ext. 2510.

HOME - For one white kitten, 6 weeks old, female, blue eyes and 2 black spots on top of head. Frank, Ext. 2430.

ROOM AND BOARD - For friendly, medium-sized dog, good with children. Two weeks, second half of June. Ext. 689 or AT 6-0147.

HOME FOR DOG - Alert, friendly, 5 mo. old. Spanish-retriever cross. Dog free, shots \$15. L. Miller, Ext. 2543.

HOME - Female puppy, 8 weeks old, mother - purebred sheltie, father - same size, yours free if you promise a good home. Colsmann, Ext. 597.

LOST

RUG - A rolled rug was misplaced in Building 510 between May 14 and 28. It is approximately 30x50 in. and has a modern orange, green, and black design on grey. A reward will be paid for information or its recovery. G. Roeser or E. Church, Ext. 2578.

FOR RENT

HOUSE - 3 1/2 rms, cellar, garage, 20 minutes from Lab, lease. AT 1-8302.

HOUSE - 2 story, 3 bedrooms, large modern kitchen, 2 car garage, wooded lot, 15 min. from Lab., Miller Place, North Shore. \$120 mo. Frank Dunn, Ext. 301 or HR 4-5379.

APARTMENT - 4 1/2 rms, 3 bedrooms, in Patchogue Garden Apartments. Available July 1. Rent: \$128 mo. Sublease for one year or more. A. Schwarzschild, Ext. 797 or GR 5-1964.

CARPOOLS

Driver needs rider or carpool from Central Islip area. Donald Engelberg, Ext. 2579.