

# the Bulletin Board

VOLUME 15, NUMBER 47

Published by BNL Personnel Office

JULY 31, 1962

## OH WHAT A BEAUTIFUL DAY



Liz Honnet, Miss BNL 1962, being crowned by Dr. Maurice Goldhaber, with Rosemarie Reichold looking on.

### MISS BNL 1962

We don't have to go to Rome to find a Liz. We have our very own right here. Congratulations Liz Honnet - Miss BNL 1962.

The theatre was full at 3:45 on the day of the picnic, as twelve of the most lovely girls anyone could hope to see paraded before the judges in the Miss BNL contest. The three judges, Dr. Charles Falk, Mr. Dave Edwards and Rosemarie Reichhold (last year's runner-up) had a difficult time choosing, but choose they did. The runner-up trophies were presented by Dr. Clarke Williams to: Carol Scott - Miss Personnel; and Brigitte Griebel - Miss Crystalline Structure.

The Miss BNL award was presented by Dr. Maurice Goldhaber to Elizabeth Honnet - Miss 80" Control Room.

### FOLK DANCING

There will be folk dancing every Monday evening at 8:00 p.m. at the Recreation Hall.



Ginny Sayre placing the victors sash on Liz Honnet, as other contestants look on.

Operation Get-Together has come and gone, but those who attended will not soon forget the wonderful time they had.

A new attendance record was set with 4,250 people taking part in the biggest picnic yet. Delicious hamburgers, hot dogs, corn and watermelon were served; and most popular with the children were the Carvel and cotton candy stands. The theatre was packed for the clown show, and the Miss BNL Contest; and there were continuous cartoons in the Lecture Hall.

The Starlighters provided fine dancing and listening music, and there was square dancing courtesy of the Fearsome Foursome. And oh those contests - - - the winners were:

#### Crazy Hat Contest

#### Out of This World

#### Diaper Derby

Anonymous, Reactor Theory

Bill Walsh, Jr., Accelerator

Diana Caiazza

The winner of the Grand Door Prize was Gordon Stubbing, A.E.C. His prize is free admission, for two, to all BERA functions for a one year period. The other Door Prize Winners were:

Marion Walsh - Health Physics

David Pappa - Plant Maintenance

William Gefers - Accelerator

Doris Gangemella - Cosmotron

Gerry Riker - Cosmotron

John Zoeller - Nuclear Engineering

Pat Worthington - Supply & Materiel

Harold Avent - Physics

James Miles - Plant Maintenance

Andre Gallman - Physics

The Bubble Gum Contest winner was John Andrisani, and Anthony DiDio won the Spaghetti String Contest.

## BERA FILM SERIES

## "MISS JULIE"

**MONDAY, AUG. 6 8:30 P.M. LECTURE HALL**

"Miss Julie" is a cold, flawless jewel of a movie, a perfect rendering of Strindberg's play. Anita Bjork has never equalled her performance as the repressed, neurotic Julie. The galloping nightmare quality of the servant's Midsummer Eve revel is subtly balanced by the genteel horror of the dream-like flashbacks. Ulf Palme is strongly masculine, arrogant, and ambitious as the servant who seduces, or is seduced by, Julie; Marta Dorff is ugly and earthy as his downstairs mistress; and Jessi Alandh is a voluptuous icicle as Julie's mother. Alf Sjöberg, one of Europe's best directors, directed "Miss Julie."

## JAPANESE FILMS

About two hundred and fifty persons enjoyed four films on Japan last Wednesday evening. The show was presented by the Japanese scientists at the Laboratory together with BERA.

The Lecture Hall was decorated with paper cranes and Japanese flower arrangements, and wives of the Japanese scientists wore their native kimonos. The evening was enjoyable and most interesting for all.

## STAG OR DRAG

A good time is waiting for you as you dance to the music of Frank Campbell's Combo every Wednesday night at the Recreation Building in the apartment area. Admission is only 50¢. Beer, soda and pretzels are available. The time is 9:00 p.m. to 12:00 p.m. All are welcome, wed or unwed, secretary or scientist, steady or ready.

**PLAY SAFE-**

THERE'S NO  
SUCH THING AS

SECOND  
SIGHT...



HANG ON TO WHAT  
YOU'VE GOT--  
WEAR YOUR **SAFETY  
GLASSES.**

## THANK YOU

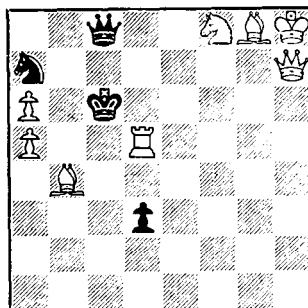
It would be impossible to list the names of everyone who worked so hard to make OPERATION GET-TOGETHER NO. 5 such a success. We would like to say **thank you very much** to all the committee members and volunteer workers.



Our special thanks to the following committee chairmen: IKE COLE, Tickets; JERRY FRIEDMAN, Publicity; CARMEN SPIRIO, Entertainment; JACK FITZSIMMONS, Food Supervision; JOSEPH MEAD AND RALPH PERRY, Facilities; JOHN PONTIERI AND ANDREW CENDROWSKI, Carnival; DUKE WORTHINGTON, Contests; JAMES WALSH, Food Menu; JOSEPH MISIANO, Food Layout; ROBERT BROWN AND MARION CHILDRESS, Signs; EDWARD HAGELBERG AND ANTHONY TORRE, Communications; NEAL ROBERTS, Athletics; MARIE FOLLENIEUS AND CAROL ROZANSKI, Decorations; RUTH NEUSS, Program Coordination; ELLEN LEONE, Secretary; DONALD DAVID, Volunteers; ROBERT FUCHS, Area Supervisor; and NEAL WEBER, Beauty Contest.

## CHESS PROBLEM

This week's game is an end game study. It is White's move and mate in two. How? Answer elsewhere in this week's BULLETIN BOARD.



## TO RETIRE AUGUST 3



On August 3, 1962, Mr. Herman Schreiber, a senior BNL employee, will terminate his employment here to retire. Mr. Schreiber has served the Laboratory since September, 1947 in the Plant Maintenance Division.

On behalf of all BNL employees, THE BULLETIN BOARD wishes Mr. Schreiber good luck in his retirement.

## VISITORS

On Thursday, August 2, a group of nurses from the Kings Park State Hospital will tour the Laboratory.

The National Science Foundation Institute of Mathematics teachers at Columbia University will visit Brookhaven on Thursday, August 2. The National Science Foundation Institute of high school teachers at Columbia University will also tour the Laboratory on Friday, August 3.

## Arrivals and Departures

## WELCOME TO BNL

COSMOTRON	
Gerard R. Lange	Ext. 464
MECHANICAL ENGINEERING	
Anthony C. Finocchio	403
PHYSICS	
Albert A. Cinquepalma	2671
Noel C. Litwin	2439
Raymond E. Wolfe	686
SUPPLY & MATERIEL	
Vincent J. Angloro	

## LEAVING BNL

BIOLOGY	
Patricia J. Schroeder	
MECHANICAL ENGINEERING	
George Stoll.	

## SOFTBALL



by ROGER CALDWELL

Pity the poor slo-ball pitcher. His efforts go unsung, his earned run average is ridiculous, and even the worst hacker can hit the fat bloopers he serves up. The slo-baller learns early to accept philosophically the repeated line drives that buzz by his ear. Some hurlers have even adopted a kind of psychological warfare that partly, at least, compensates for the large cross-section the ball presents at low energies.

Take, for instance, "Red" Carstens, sometime hurler for the Blue Jays. He tosses a careful, I'm-doing-my-best-to-put-it-where-you-can-hit-it, pitch, well calculated to inspire a stab of inadequacy at the crucial moment. Or take Gordon Danby, who throws for the E.A.O. His specialty is a floating, backspin pitch, delivered with a big, arm-flailing motion, as if Ray Stevenson himself were chucking. If he occasionally slips a fast one in, it is the better to preserve the illusion. Typical of the artillery school of thought among the slow-ballers is Bill Keating of the Old Timers. This Ancient Gent drops the ball at a 45 degree angle in the back six inches of the shoulders where only a contortionist can hit it. He attained his accuracy by tossing beer cans into the trash buckets.

In the final analysis, however, only a pitcher like Pat Lettieri of the Untouchables has what it takes in slo-ball: nine good players behind him.

There really is a team called the Upton Downers. I saw them play Medical just this week. They pound their gloves and holler at the ump just like real live ball players. Their teamwork is commendable, and only a close play at the plate spoiled a well played game.

Medical 10 - Upton Downers 9

Electronics earned 6/7 of an upset only to lose to the Untouchables in the last inning, 12-11. The Untouchables' secret game after game, is to always play just a little bit better than the opponents.

## Other Scores:

E.A.O.	12	H.P.	4
Metallurgy	7	Phoubars	5
Metallurgy	12	Old Timers	4
Dirty Sox	16	Biology	7
Bubble Boys	15	Gnats	6

## BRIDGE

Here is a defensive problem, faced by several defenders last Thursday, for you to handle. Your side needs two of the remaining four tricks, and you know this is the situation. Spades are trump.

N

D. A J 9  
C. 5

E

D. Q 8 3  
C. 8

S

S. 6  
D. 7 5 4

Declarer leads a small diamond toward dummy. What do you play? Decide before you read on.

Score zero if you play a low diamond, one hundred if you play the king. If you play low, declarer will play the nine, as this will succeed whenever you hold the ten and the diamond pictures are split. The play of the Jack only works when you hold both the king and the queen.

The nine loses to your partner's queen, declarer trumps the club return, and successfully finesses your king. However, if you at first played the king, declarer would likely assume you had the queen and would win the ace, trump a club, and lead another diamond. When you play low, chances are he would put up the jack, and down he would go.

The big upcoming event is another team-of-four on August 9 with the defending champions, the team of Les Lawrence, Sandy Wagner, and Mr. & Mrs. Bob Schermer.

Form your team this week and then call Les Lawrence, Ext. 2354 or 2591 to enter.

## SOLUTION TO CHESS PROBLEM

The key is 1. R - R5 to prevent Black's Q-R6. Now if Black answers by:

1. P-Q7 White's move should be:  
2. Q-B2 or if Black 1. N-N4  
2. Q-B5 and if 1. Q-B2  
then 2. Q-K4.

ELIGIBILITY AND ENROLLMENT  
FOR THE  
MEDICAL INSURANCE PLAN

## Family Benefits

When a single employee marries and wishes to change from the Single to the Family Plan, application should be made at the Personnel Office. If the application is made within ninety days of the date of marriage, no medical examination will be necessary. After ninety days evidence of insurability will be required.

## Maternity Benefits

Maternity coverage for the wife of an employee with a Family Plan becomes effective nine months after the application for family benefits is approved.

## Student Benefits

When the child of an employee becomes 19, his coverage under the Family Plan is automatically cancelled. By payment of an extra premium equivalent to the premium paid by a single employee, children over age 19 are eligible for coverage if they fulfill all of the following conditions:

1. They are unmarried and make their home with the employee;
2. They are fully dependent upon the employee; AND
3. They are attending an accredited educational institution on a full-time basis.

Application should be made at the Personnel Office within ninety days from the date of starting school as defined under Condition No. 3.

WHERE IS  
THE SAFEST PLACE TO BE?

Today, American working men and women are safest when they are at their jobs.

The Insurance Information Institute, which has a solid business reason for coming up with substantiating figures, is authority for the statement.

The I.I.I. reports that working men and women are "safer at work than at home, safer than in public places, and most certainly safer than in traffic." It goes on to explain:

"In 1960, some 14,000 on-the-job industrial fatalities were reported for the entire United States, as against approximately 38,200 motor vehicle fatalities, 27,500 fatalities in home accidents and 16,500 fatalities in public places in other than motor vehicle accidents."

"Half a century ago, accidents were commonplace," the report emphasizes. "In 1913, 91 workers out of every 100,000 employed in manufacturing were killed at their jobs. Twenty years later, in 1933, the ratio was 25 killed per 100,000 workers."

"By 1953, the rate had been reduced to 14 per 100,000 and today the figure is still lower, approximately 11 per 100,000. The number of disabling occupational injuries, alone, in the relatively short space of time since 1933 has been reduced almost 50 per cent."

"This improvement is chiefly attributable to engineering and employer progress, resulting in advances in machine design, operational procedures and protective devices."

## CLASSIFIED ADS

## FOR SALE

1956 BUICK - Good running cond. Owner leaving country. \$275. G. Czapski, Ext. 628.

1953 BUICK - Auto. trans., power steering, good trans. Best offer over \$100. Ext. 2112.

1957 FORD WAGON - 9 passenger, 35,000 orig. miles, T-Bird engine, std. shift, excell. cond. \$700. JU 1-2699.

1953 PLYMOUTH - 4 dr. sedan, mech. excell., orig. owner, 75,000 miles, body needs work. \$100. Available August 24. Ext. 753.

1961 WILLIES JEEP - Has 10 tires and rims, 5 beach and 5 army, two tops, one full top and one beach top. \$1500. George Hambley, Ext. 481 or HR 2-1151 after 5:30 p.m.

TR-3A - 1960, black, Michelin "X" tires, very good cond. \$1500. Howard, Ext. 548 or AT 9-1750.

1959 PLYMOUTH SAVOY - Std. trans., heater, 54,000 miles. Owner leaving Lab. \$700. Pat, Ext. 2320 or PA 7-3538.

HOUSE - 5 rooms, 2 baths, finished cellar, gas hot water heat, 3 track combination screens and storm windows, wall to wall carpeting, attached one car garage, patio, landscaped plot 100 ft. by 207 ft. Walking distance to schools, village and railroad. Owner leaving state. GR 5-5549 after 5:30 p.m.

12' SKIMMER RUNABOUT - Steering wheel, throttle, shift controls and cables, canoe paddle, self bailer, excell. cond. \$109. Also: 12 hp Sea-King outboard motor with forward, neutral and reverse. Includes 6 gallon gas tank with gauge, spare prop. and motor stand. \$149. Both for \$238. Rich Kerzner, Ext. 2411.

6 CYL. CHEVY ENGINE - Complete, best offer over \$50. 1962, 13 inch full chrome hub caps. Excell. shape. Tut, Ext. 2255.

SINGER SEWING MACHINE - Portable, lightweight, British model. \$65. Ext. 535.

TELESCOPE - 2½ in., refracting, 40x60, adjustable tripod, with alt-azimuth mounting to allow verticle and horizontal movement, can be locked in any position. Only four weeks old. Ext. 2564 or AT 6-0620 after 5:30 p.m.

LAWSON SOFA - 6 ft. Upholstered in marron and beige small stripes. Custom slip covers included. Cond. good. \$35. Call HR 3-2523 after 6:00 p.m.

TELESCOPE - 60 mm. refractor, 4 eyepieces, tripod, finder scope, etc. Best offer over \$40. J. Faust, Ext. 2255 or 2474.

MICROSCOPE - AO Microstar Binocular, triple objectives, with case and lenses, new, exceptional buy. \$450. Bob Borruso, Ext. 2419.

FOAM RUBBER MATTRESS - Sealy 4 in., full double bed size, \$30. Matching heavy plywood platform on metal frame with casters, \$10. Fischer, Ext. 618.

STEREO HI-FI SET - 70 Watt complete, Thorens turntable, Dyna kit preamplifier and power amplifiers, 2 Electro-Voice Esquire 200 speakers. Value over \$600. Only one year old. Owner is leaving Lab., selling for best offer over \$430. H. Zulliger, Ext. 618.

G.E. CLOCK RADIO - Push button. \$30. Hank Maust, Ext. 454.

SOUND PROJECTOR - 16 mm Bell & Howell, 27 full length technicolor pictures, plus twenty 400 ft. shorts, and four 400 ft. color cartoons. Will demonstrate. SH 4-5404.

ORGAN - Wurlitzer, two manual spinet in solid walnut, Italian Provincial cabinet. Complete, factory installed, set of chord buttons added, only one year old and hardly used. Original cost, \$1300; yours at a bargain price. Gordon, Ext. 2308 or Em 3-6155 from 6:00 to 8:00 p.m.

TV - 17 in. Admiral, portable, used very little, in excell. cond., orig. cost \$150., yours for \$50. Gordon, Ext. 2308.

GARAGE DOOR - 15'x7' overhead, all hardware included. Any reasonable offer. Bob, Ext. 2135 or AT 6-8770.

ROLLER SKATES - Chicago ballbearing, indoor, white shoes, girl's, size 4. Very good cond., only used at roller rinks. \$12.50. GR 5-1584.

IRRIGATING SYSTEM - 460 ft. of 2 in. aluminum pipe with sprinkler heads, risers & connectors. \$225. Centrifugal pump powered by 4 hp B & S engine. Delivers 40 GPM. \$165. Both in excell. cond. AT 9-0413.

LABRADOR RETRIEVER PUPPIES - Available soon, a select few Show and/or Field type Labrador Retriever puppies One is the holder of many awards from major shows. In addition, she is an excellent Gun Dog. The other is selected to be one of the most perfect type Labs in the Country. Del Sieger, Ext. 2169 or GR 5-3195.

PIPE COLLECTION - 10 brand new pipes in attractive walnut rack, with humidior. Pipes cost \$2. to \$10. One very unusual Kaywoodie. Everything for \$19. Sandy Wagner, Ext. 618.

PLOTS - On a beautiful road called Harts on the Sound. Private stairs to the beach. Water rights, fruit trees, lovely view. Call Ed Mig-nani, WA 9-4434.

1959 EVINRUDE LARK - 35 hp, elec., long shaft, with batt. and controls. Any offer over \$250. All in excell. cond. JU 5-8322.

## LOST &amp; FOUND

EYEGLOSS CASE - Brown leather, found at Hot Lab. Personnel Services, Ext. 2107.

PARKER "21" PEN - Black body with silver metal cap. Believe to be lost in Apartment area. A. Abrahamson, Ext. 2503.

PERSONNEL BIKE - Lost. Girls model, red. We use it to help expedite transmission of rate-of-pay changes to payroll. Call Ext. 396.

BOY'S HAT - Lost. Red, left in coke truck at picnic. Ext. 2375.

## FOR RENT

APARTMENT - Blue Point, 5 rooms and bath, summer porch, heat and all utilities incl. Adults please. EM 3-6509 after 6:00 p.m. for appointment.

APARTMENT - 4½ large rooms in Patchogue Garden Apartments. Unfurnished, two bedrooms, ground floor, new refrigerator. Available September 1. \$128 per mo. M. Stern, Ext. 2241 or GR 5-8556 after 7:00 p.m.

HOUSE - Unfurnished, 3 bedrooms, one year lease, available September 1. Wall to wall carpet in living room, one bedroom drapes and curtains, freezer in basement, landscaped yard, private beach rights, 10 miles from Lab. \$120 per mo. Ext. 2245 or SH 4-3814.

## WANTED

HOME - For lovable, intelligent, tame, brown rabbit, complete with cage and food. Stuart Lane, Ext. 572.

BASS VIOL - ½ or ¾ size. S. Fink, Ext. 346.

HOME - For four kittens, black, tiger, and spotted. Four weeks old, all male. June Nowaski, Ext. 2320 or YA 4-3360 evenings.

FURNISHED APARTMENT OR HOUSE - To rent, 2 or 3 bedrooms, beginning September 1, 1962. Nick Reiss, Ext. 2733 or Stan Kaplan, Ext. 2732.

CEMENT MIXER - In trade for 6' Dingy with oars and anchor. JU 5-8322.

## CARPOOLS

Driver wishes to join or form carpool from Smithtown vicinity. Joyce Smith, Ext. 578.

Driver would like to join carpool from Bayport area. Ext. 396.

Would like fifth driver for existing carpool from the vicinity of Centerreach. Paul LeDoux, Ext. 403.

Driver would like to join carpool from Center Moriches. Hank Maust, Ext. 454.

Rider would like to join a carpool from Sayville area. Ext. 2701.

## BULLETIN BOARD CLASSIFIED AD POLICY

1. Employees only may place ads in THE BULLETIN BOARD.
2. All items advertised for sale must be property of an employee.
3. Real estate ads will be accepted only when they involve change of residence by an employee, and are accompanied by a statement of ownership and change of residence.
4. No ads for business purposes will be accepted.
5. Ads must be submitted in writing (preferably typed) by 3 p.m. Friday for inclusion in the next week's newspaper. Address the ads to THE BULLETIN BOARD, 58 Brookhaven Avenue, or deliver them to the Personnel Office. Ads must contain a signature and Laboratory telephone extension. If you do not want your name to appear when the ad is printed, put it in parentheses.
6. Ads are run on a space available basis. If your ad does not appear due to space reasons, it will be held for inclusion in the next issue of THE BULLETIN BOARD.
7. If you wish to repeat an ad, it must be resubmitted.