

# the Bulletin Board

VOLUME 15, NUMBER 49

Published by the BNL Personnel Office

AUGUST 14, 1962

## FOLK DANCE SPECIAL COMING



The Brookhaven Folk Dance group will hold its regular weekly program next Monday, August 20, at the Recreation Hall from 8:00 to 11:00 p.m.

On Monday, August 27, the dance group will sponsor an evening of dancing and instruction under the direction of the noted folk dance authority and teacher, Michael Herman. Mr. Herman is the co-founder of Folk Dance House in New York City, a center for folk dancing since 1940. His activities have ranged from overseas tours sponsored by the State Department, to entertaining the Moiseyev Dance Company during their stay in New York. The program will be held at the Recreation Hall from 8:00 to 11:00 p.m. Refreshments will be available. Admission is \$1.00

Following the August 27 program, the Brookhaven Folk Dance Group will recess for the month of September.

## TENNIS TOURNAMENT

This week's BNL Tennis Tournament play will feature the Ladies' Singles and Men's Doubles championships. In the ladies' finals, scheduled for Wednesday at 5:00 p.m., Fauro will play Ryan; and the Men's Doubles on Thursday at 5:00 p.m., pits the duo of Kevy and Honeck against Merkle and Auskern.

The Men's Singles have reached the semi-finals as have the Mixed Doubles. The winners will be determined by the week of August 20.

Scorekeepers and lines judges are in scarce supply. If you plan to see your favorite tennis ace in action, call Ext. 391 and volunteer.

## SPECIAL POOL EVENTS



Fun, contests, and prizes will be in store for you on Friday afternoons in the swimming pool.

BNL'S first annual Inner-Tube Derby will be held on August 17. All boys and girls between the ages of ten and fifteen are eligible. Contestants should register with the lifeguards. Free pool admission will be granted to entrants registered before that day. Bring your own tubes!

August 24 is Crazy Fetch Day. Who can find the lucky object?

All pool events begin at 3:30 p.m. See you there!

## DISCOUNT TICKETS

Discount coupons are now available at the Recreation Office, 3 Center Street, for Madison Square Garden's "The fabulous ICE CAPADES OF 1963."

These coupons offer approximately a 30% discount, and are good for the evening performances on August 29, 30, 31, September 2, 4, 5, 6, 9, 10, 11, 12 and 13, and for the Matinees on September 1 and 2. Children under 12 years - half regular price on Saturday Matinee.

## BOWLING TEAM CAPTAINS

Entry blanks for the 1962-1963 season are now available at the Recreation Office, together with a listing of the final 1961-1962 averages of all BNL bowlers.

## BERA FILM SERIES

### "LOVE IN THE CITY"

Mon., Aug. 20 - 8:30 p.m. - Lecture Hall

"Love in the City" consists of five episodes comprising a "film journal" about love, directed by Federico Fellini, Cesare Zavattini, Dino Risi, Alberto Latuada, Michelangelo Antonioni, and Francesco Maselli.

A dozen of Italy's top directors, writers, and photographers collaborated in these candid-camera episodes, revealing city life and love. Zavattini conceived and hoped it would be followed by more "spectator" films, exploring a new possibility of neo-realist film technique that would employ considerable improvisation. It uses cinema as a way to observe life.

## BRIDGE

Bob Schermer and his charming wife Lennie set some sort of a record in the past two weeks – winning a master point game on July 26, a baby girl four days later, and another master point August 9.

The Schermers teamed with Les Lawrence and Sandy Wagner to win the BNL mid-summer team-of-four event. With seven teams competing, the winners scored 13 out of a possible 18 points; the team of Mr. & Mrs. Paul Michael and Mr. & Mrs. John Suich scored 12. In third place with 9½ were Gus Allen, Harold Schwarz, Paul Reilly, and Max Schmaeler.

Lawrence and Wagner demonstrated good bidding technique on this hand in which they held but half the high cards, and yet reached the icy 6H contract.

**N** (Lawrence)

S. —

H. K Q 9 8 6

D. A 9 6 3

C. Q 10 4 2

**W**

S. K 9 5 2

H. 7 4

D. K 8 7 4

C. 8 7 3

**E**

S. A Q J 10 8

H. 10

D. Q J 10 5 2

C. A 9

**S** (Wagner)

S. 7 6 4 3

H. A J 5 3 2

D. —

C. K J 6 5

East & West Vulnerable

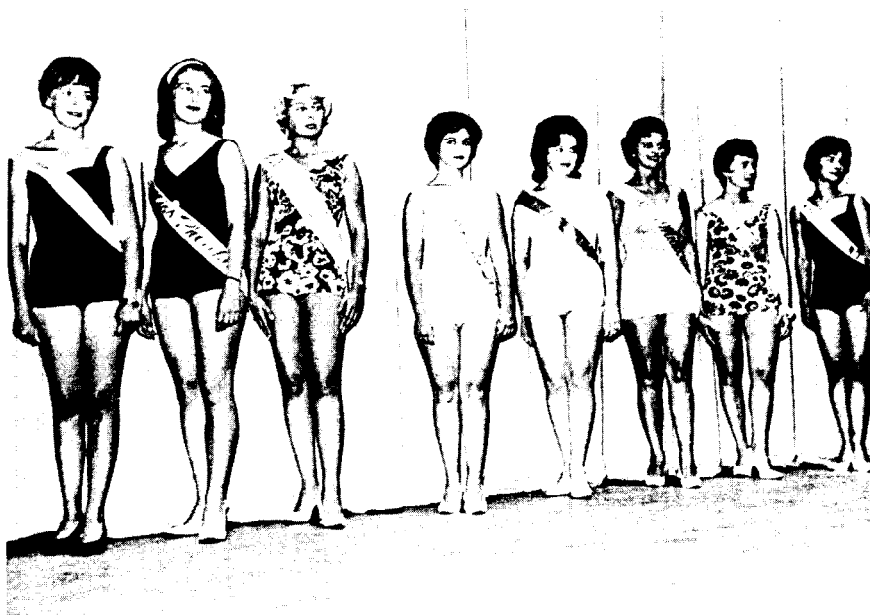
## Bidding

W	N	E	S
P	1H	1S	2C
P	2D	X	3D
P	5C	P	6H
P	P	X	P
P	P		

Wagner's response of 2C, instead of an immediate 3H bid, was a start of a complete description of the shape of his hand. Lawrence also chose not to give an immediate club raise, but bid 2D first to show the shape of his hand. When East doubled this bid, Wagner took advantage of this opportunity to show his diamond void by a bid of 3D. (If he had actually held support for his partner's diamond bid, he would have passed or redoubled.) Lawrence now completed his picture with a bid of 5C. As Les had bid three suits, his partner knew that he could hold no cards in the fourth suit, spades, and thus went directly to 6H. The ace of clubs was the only trick for the defense.

A full master point game will be held on Thursday, August 23, at 7:45 p.m. in the Recreation Hall.

## PICNIC PICTURES



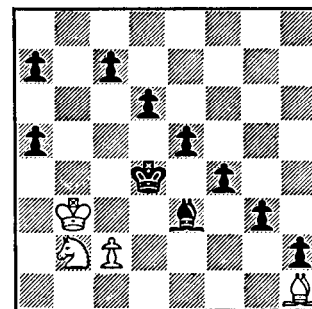
Pictures of Operation Get-Together are now on display at the Cafeteria. If you desire copies, copy the negative number and place your order at the Recreation Office by August 24. Each copy will be \$.05.

## ANNOUNCEMENT

The optician will not be at Building T-100 on August 16 or 20.

## CHESS PROBLEM

This week's problem is a so-called "ladder study" in which White, with only one pawn could win. You had better put up the board for this one. It is White's move. Answer elsewhere in this week's BULLETIN BOARD.



## WINNERS BUT NOT YET CHAMPIONS!



by ROGER CALDWELL

The smoke hasn't cleared yet, but three winners have emerged from the jumbled sounds of battle on the Softball fields.

Winners in the Brookhaven League are the Blue Jays. This raucous crowd of Jaybirds are probably the cream of the BNL leagues. A new team this year, made up of some of the better ballplayers from now defunct squads, they would be the odds on favorites to take the post season playoff if playing skill was the only basis for comparison.

However, they will have to reckon with the effort and determination of the Untouchables, undefeated winners of the National League. A well practiced and disciplined team, their strong point is hitting. If home runs had been counted this season, Joe Conway would run away with the honors, while Ernie Bindel and Mike Guacci would be welcomed in any batting line-up.

The dark horse in the playoff drama will have to be Medical, winner of the Laboratory League, where fun is the primary objective. Not to be tossed off too lightly, the Medicalmen have the capabilities to trip either of the other teams if they hesitate too long. Besides, they are on good terms with the goddess of luck, who with a wave of her hand can upset the wisest calculation in this fickle game of slo-ball.

The playoffs are planned so that the first team to win two games will have won the BNL Slo-Ball Championship. The first game will match the undefeated Untouchables against the flashy Blue Jays on Monday, August 20, at 5:30 p.m. The Jays will then lock horns with the Medics on Tuesday at the Carpenter Shop Field. If the Jays lose either of the games, then Medicalmen will meet the Untouchables on Thursday. If by then, everyone has a game to their credit, a rematch will be scheduled between two of the teams, and the winner will play the bye team for the championship games.

The play should be fast and furious, and the teams evenly matched. For an exciting evening next week take in one or all of the playoff games. The fresh air will pick you up, and the Laboratory grounds are especially lovely in the long summer evenings.

## FORM YOUR BOWLING TEAM NOW

BNL league bowling is one of the most enjoyable winter activities available. Our leagues bowl once a week, and there is no conflict with later social activities, as games start at 6:00 p.m. There will be leagues on both the North Shore and the South Shore, with a choice of three or more nights of the week. The cost is low; \$3.50 entry fee plus the actual cost of the games bowled; no charge for missed games; no dues. You don't need a ball – the alleys have a large selection for your free use. Shoes are available for a nominal rental fee, or you can buy your own pair for as little as \$5.00. Scoring is on a handicap basis, as poor bowlers, new bowlers, or never-bowled-before bowlers, are as welcome as those with pro-class averages.

Get the details now, and enter early! Team entry blanks and further information is available at the Recreation Office, 3 Center Street. If you can't get enough bowlers together to form a team, give George Sabine your name and he will put you on a list with other potential team members.

## LADIES' BOWLING CHANGED

It is planned to change the size of the BNL ladies' bowling teams from five to four bowlers. Any number from four to eight may be carried on a team roster, but only four will bowl in each game. This change is designed to provide the ladies with an earlier finishing hour, stimulate the formation of more teams, and have fewer forfeits (a team will forfeit only if fewer than two bowlers are present). A poll of some of last year's lady bowlers makes it appear that this change is attractive, and the formal change will be made by agreement when this year's captains meet early in September. In the meantime, it is suggested that teams plan for the four-bowler arrangement. This change will not apply to them Men's Leagues.

## FISHING CONTEST



George Sabine was the June winner with a five pound fluke. The prizes were a De Liar and Tankard.

William Flynn of Security, and Jim Baranosky split the July award of a knife and net. They each had a 7½ pound blue. Flynn got his in Shinnecock, and Baranosky on the North Bar at Montauk.

Things are pretty slack except for a few hot spots. The blues are off Port Jefferson but are very fussy. They only hit a lure known as a Scotty Rig, that has to be imported from Connecticut. Connecticut boats load up and the North Shore boats go hungry.

## BASEBALL BOX SEATS

BERA's box at the Polo Grounds has proven to be very popular, as seats have been sold-out well in advance for the summer months. However, there are still a few September dates open, featuring **Milwaukee, Cincinnati, and Chicago** on September 10, 16, 21 and 23. Oh yes, they are playing the Mets.

## Arrivals and Departures

### WELCOME TO BNL

ACCELERATOR	
George Korhut	Ext. 2410
NUCLEAR ENGINEERING	
John Garrison	453
Bette E. Sullivan	439
PLANT MAINTENANCE	
Arthur J. Englebach	2389
SECURITY & PLANT PROTECTION	
Marcella Wyer	2392

### RECENT DEPARTURES

COSMOTRON	
Patricia E. Tilp	
MEDICAL	
Kanti R. Rai	

**CLASSIFIED ADS****FOR SALE**

1956 CHEVROLET - 2 dr., Bel Air model, auto. trans., r&h. Ext. 345 or 2776 evenings.

1958 FORD - Like new, 2 dr. sedan, r&h, one owner. \$785. Ext. 2323 or JU 8-7331.

1958 RENAULT DAUPHINE - Engine, generator, front end & brakes rebuilt recently. Good tires, body & interior excell. \$325. Charlie, Ext. 573 or SH 4-3312 after 5:30 p.m.

1953 PLYMOUTH - 4 dr. sedan, one owner, 75,000 miles, mechanically excell. Available August 24. \$100. Ext. 753.

1953 JAGUAR MARK VII - In good cond. \$375. N. Elliott, Ext. 679.

1955 DODGE - Excell. running cond., can be seen at Building 422 parking lot on Wed., Thurs., & Fri. J. Knab.

1960 PONTIAC - Bonneville, excell. cond., 2 dr., r&h, air cond., power steering & brakes, 6-way power seat, alum. brakes and wheels. Gail Simon, Ext. 367 or HR 3-9115.

1961 VALIANT - Station wagon, must be seen to be appreciated. Reiff, Ext. 481.

1959 PLYMOUTH SAVOY CAMPER - In excell. cond., r&h, brand new tires, two snow tires completely equipped for camping, folding seat, gasoline stove, table and camp stools, window screen, etc. \$850. Only for drivers with healthy legs, std. trans. Rudy, Ext. 2667 or SH 4-9694 after 5:30 p.m.

1954 STUDEBBAKER - Coupe, in reasonably poor cond., it runs however. Must sell, leaving country. \$50. takes it away. G. Lellouche, Ext. 550.

1960 CHEVROLET - 4 dr. sedan, standard, excel. cond. Ext. 2453 or GR 5-5983.

1957 ZUNDAPP GERMAN MOTORCYCLE - 250cc, excell. cond., one owner, must sell. Anton Vierling, Ext. 2270 or 14 Cavendish Lane, Room 18.

1954 PLYMOUTH - 4 dr. 6 cyl., auto. trans., mechanically sound. \$125. Ted Moleff, Ext. 2314.

SAILBOAT - Old Towne, white cap, 14 ft. long, 6 ft. beam, 24 in. freeboard, 7.5 hp outboard on bracket, brand new dacron sails, 2 jibs, stainless and bronze rigging, paddle and anchor. Painted this spring, and in water. This is an excell. family boat with plenty of room and very stable. Reasonably priced. MO 9-9202 after 6:00 p.m.

PRAM - 8' long, needs paint job, priced for quick sale. GR 5-4199 after 5:30 p.m.

10' PLYWOOD - \$40. Ext. 2152 or GR 5-1683 after 6:00 p.m.

16' RUNABOUT - Home made, \$35. Frank Merkert, Ext. 2639.

M.F.G. FIBERGLASS BOAT - Navy top, lights, cushions, 18 hp Johnson. \$700. firm. Ext. 2597 or AT 4-0792.

SNIPE CLASS SAILBOAT - Old but in excell. repair. May be seen at Berth 86, Bellport Docks. \$150. Ext. 2237.

1957 18' REVEAU - Fully equipped with Navy top windshield to motor. 1959 50 hp Johnson outboard with elec. starter. 1959 Biscayne

trailer, cushions, two 6 gal. gas tanks with 15' hoses, anchor and brand new steering wheel, control box and cables. \$1100. J. Backes, GR 5-9115.

1958 FLEETCRAFT - 14' runabout, fiberglass hull, mahogany deck, 1958 Johnson 35 hp elec. start, remote controls, running lights. Completely equipped with two 6 gal. tanks, paddles, skis, tow line, etc. \$75. and resumption of a bank loan of \$570. J. Gordon, Ext. 2553 or 2323.

14' RUNABOUT - 25 hp Gale engine, skis and equipment, engine excell. Used one and one-half seasons, hull in good cond. \$350. R. E. Wolfe, Ext. 2407.

1962 WESTINGHOUSE AUTO. WASHING MACHINE - Ext. 345 or 2776 evenings.

ELECTRIC FAN - 13 in. diam. Electric deep fryer and cooker. Painted wooden record and phonograph cabinet. Baby carriage, lifts out for car bed. Ext. 2776.

EXPOSURE METER - Golden Crown, with boster, case and incident light attachment. \$44. list. \$25. firm. Condition like new. Ext. 2597 or AT 4-0792.

WOMEN'S CLOTHING - Size 12-14, reasonable. EM 3-6214.

HI-FI SPEAKERS - 2, Electro Voice Esquire 200, walnut enclosure, like new. H. Zulliger, Ext. 618.

2 DOORS - 32" x 79 3/4" x 1 3/4". One has 3 glass panes, the other has 4. Hardware included. \$4. each. J. Austin, Ext. 668.

REFRIGERATOR - Crosley Shelvador. \$30. J. Austin, Ext. 668.

TICKETS - 4, \$2. each for 5:00 p.m. performance at Westbury Music Fair, Saturday, Aug. 18, of "Wildcat" (Martha Raye). Grace Schiro, Ext. 2645 or AT 6-8234.

ROYAL PORTABLE TYPEWRITER - Very good cond. \$50. Bob Tallon, Ext. 2152 or HR 3-2753.

SCUBA EQUIPMENT - 3/4 double skin parkway wet suit, complete. U.S. Divers tank with J-valve and back pack. U.S. Divers aquamatic regulator and U.S. Divers "Aqua-Div" regulator. Weight belt and extra weights. U.S. Divers knife. Taylor compass & depth gauge. Excell. cond., like new. Must sell. \$180. C. Frank, Ext. 2201.

STUDIO COUCH - Green, with two pillows and slipcover. Fair cond. \$5. Bornstein, HR 3-1813.

DOG BED - 3' x 2' 10", 3 months old. \$4. Bea, Ext. 2102.

**SOLUTION TO CHESS PROBLEM**

- | White         | Black   |
|---------------|---------|
| 1. P-B3 Check | 1. K-B4 |
| 2. N-R4 Check | 2. K-N4 |
| 3. P-B4 Check | 3. K-R3 |
| 4. B-B6       | 4. B-N8 |

If Black decides to push the pawn, the process will be longer, but not different in essentials. Now the White king can take his time, and stroll via Q-B2 and K-N2, to K-R3, all the way to Q-B8, followed by N-N7 Mate.

**ALL-STAR GAME ON WEDNESDAY,  
AUGUST 29, AT 5:15 P.M.**

DRESSES - Cottons and woolens, all dry-cleaned and like new. Will sell very reasonably. Sizes 8, 9, and 10. GR 5-8676.

POODLE PUPPY - Small miniature, 3 months old, AKC reg., male, silver, very reasonable, must sell. HR 2-0658.

ELECTRIC GRILL - New black Angus indoor-outdoor, 1400 watts, 110 volts, original price \$20, will sell for \$12. J. Constant, Ext. 618.

**WANTED**

TYPIST - Would like to have my thesis typed. G. Dulz, Ext. 613 or HR 2-1208.

RIDER - To share driving and expenses West as far as Colorado. Leaving August 20. J. Mayeski, Ext. 2187.

SECOND HAND RUG - 12' x 16' or larger. Ext. 2294.

TRANSMISSION - For Volkswagen. Ext. 2135 or AT 6-8770 after 6:00 p.m.

FM RADIO - 2 children's bicycles (seven-year olds). Ext. 2618 or 511.

HOME - For a seven-week old black male kitten. Also home for a five-month old affectionate female calico cat, very good with children. Vise, Ext. 467 or JU 4-9550.

STEAMER TRUNK - M. Sehgal, Ext. 2307.

HOME - Two tabby cats, male, five weeks old. Ext. 2320, June Nowaski.

RIDER - To California, leaving end of August. Have car and tent. H. Zulliger, Ext. 618.

BICYCLE - Ladies English, good cond. N. Ohta, Ext. 2479.

TO DISPOSE - Of one Remington Rand Card Reader Unit (Remrand 3906), like new, purchase price, \$4500. Available for donation to any BNL Department. V. Field, Ext. 2688 or AT 4-1591.

**FOR RENT**

APARTMENT - Consisting of very large bedroom, bath, and large living room with Pullman kitchen, nicely furnished, private entrance and garage. Heat and light included in the rent of \$115. per month. Ext. 2497.

FURNISHED APARTMENT - 2 1/2 rooms, full kitchen, all utilities, private entrance, garage. Available September 1. YA 4-3806.

FURNISHED APARTMENT - 3 rooms, \$90 per mo., Mastic. Ext. 453.

**LOST & FOUND**

RAIN HOOD - Found in Research Library, light blue. Personnel Services, Ext. 2107.

**CARPools**

Carpool needs members from the Sayville, West Sayville area. J. Smolski, Ext. 782.

Rider needs transportation from Miller Place to Laboratory beginning the end of August. Judy Ridgeway, Ext. 2144 or 655.

Would like to join or form a carpool from East Medow or surrounding area. Frank Ernst, Ext. 2229.