

the Bulletin Board

VOLUME 15, NUMBER 50

Published by the BNL Personnel Office

AUGUST 21, 1962

BERA'S FALL FILM SERIES

Series tickets are on sale at the Lecture Hall at show time. The tickets sell for \$7.00 and entitles the holder to come to any ten performances within two years of purchase. Series ticket holders are admitted to Bonus films free.

Sept. 6	HIROSHIMA MON AMOUR
Sept. 20	A SUMMER TO REMEMBER
Sept. 27	GASLIGHT FOLLIES plus ROBERT BENCHLEY SHORTS (This is a Bonus night.)
Oct. 4	LETTERS FROM MY WINDMILL (Fernandel)
Oct. 18	TWO WOMEN (Sophia Loren)
Nov. 1	LESSON IN LOVE (Ingmar Bergman)
Nov. 15	THE WORLD OF APU (Indian)
Nov. 29	THE YOUNG AND THE PASSIONATE (Fredrico Fellini)
Dec. 13	THE COUSINS (French)
Jan. 3	THE RULES OF THE GAME
Jan. 17	THE SEVEN DEADLY SINS

The rest of the schedule will be arranged as more exciting films become available.

BOWLING TEAM CAPTAINS

Entry blanks for the 1962-1963 season are now available at the Recreation Office, together with a listing of the final 1961-1962 averages of all BNL bowlers.

PLAY SESSION

A gala picnic and sidewalk art show will mark the end of the On-Site play session activities on Friday, August 24. Throughout the summer more than 65 different children have been registered and have taken part in the activities. Picnics, an ice cream party for younger brothers and sisters, a field day, and the On Wheels Parade have been highlights of the program. Sports, games, tournaments, and arts and crafts have been part of the daily schedule.

STOP ON RED

The Security and Plant Protection Office has requested that the following information be given to all drivers of vehicles on site:

The flashing red light at Brookhaven Avenue and Upton Road signifies that Brookhaven Avenue traffic approaching that intersection shall stop at the "STOP" line, and shall proceed only when it is safe to do so.

BERA FILM SERIES

"THE 400 BLOWS"



Mon., Aug. 27 - 8:30 p.m. - Lecture Hall

"The 400 Blows" is the story of a young frightened 12 year old boy. His mother is a shallow and vain woman whose preoccupation with her own pleasures leaves her little time for her son; his "father" is a good-natured, but none-too-bright man who willingly marries Antoine's mother when she found herself pregnant by another man; his home is a tenement in Paris. From this basis, Truffaut has fashioned an intimate portrait of a boy, universal in concept, almost clinical in analysis, but devoid of the usual sociological and psychological jargon that customarily preaches that you, as a member of society, are partly responsible.

"A small masterpiece - A picture that encourages an exciting refreshment of faith in films . . . this is a smashingly convincing demonstration on the level of the boy - cool, firm and realistic, without a false note or a trace of goo . . . Words cannot state simply how fine is Jean-Pierre Leaud in the role of the boy - how implacably deadpanned yet expressive, how apparently relaxed yet tense, how beautifully positive in his movement, like a pint-sized Jean Gabin." —NEW YORK TIMES

"A picture everyone with a serious concern for fine films will not want to miss . . . It is pure movie but unmistakably didactic. Throughout he avoids the slack, the glib, the surface answers . . . Marks Truffaut as a director of considerable skill but, more important, an artist with a sensitive grasp of the character and quality of the contemporary world."

—N.Y. HERALD TRIBUNE

FOLK DANCE SPECIAL

Monday, August 27, 8:00 p.m.
Recreation Building - Admission \$1.00

The dance group will sponsor an evening of dancing and instruction under the direction of the noted folk dance authority and teacher, Michael Herman. Mr. Herman is the co-founder of Folk Dance House in New York City, a center for folk dancing since 1940. His activities have ranged from overseas tours sponsored by the State Department, to entertaining the Moiseyev Dance Company during their stay in New York.

ELIGIBILITY AND ENROLLMENT FOR THE MEDICAL INSURANCE PLAN

Family Benefits

When a single employee marries and wishes to change from the Single to the Family Plan, application should be made at the Personnel Office. If the application is made within ninety days of the date of marriage, no medical examination will be necessary. After ninety days evidence of insurability will be required.

Maternity Benefits

Maternity coverage for the wife of an employee with a Family Plan becomes effective nine months after the application for family benefits is approved.

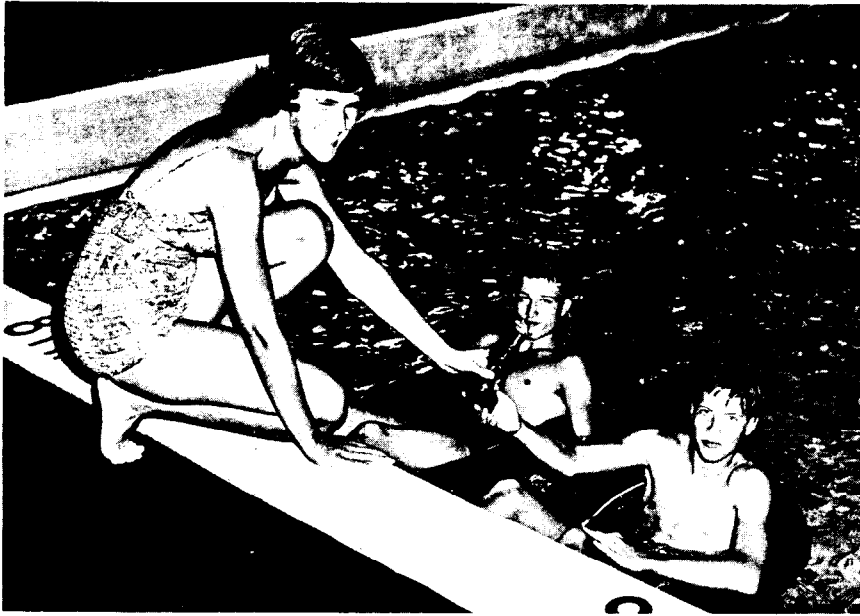
Student Benefits

When the child of an employee becomes 19, his coverage under the Family Plan is automatically cancelled. By payment of an extra premium equivalent to the premium paid by a single employee, children over age 19 are eligible for coverage if they fulfill all of the following conditions:

1. They are unmarried and make their home with the employee;
2. They are fully dependent upon the employee; AND
3. They are attending an accredited educational institution on a full-time basis.

Application should be made at the Personnel Office within ninety days from the date of starting school as defined under Condition No. 3.

INNER-TUBE DERBY



Beverly Wellings, instructor, presenting trophy to the winner, Dennis Berlin, as the runner-up, Brian Roesch, looks on.

The competition was keen as 15 contestants surged up and down the pool last Friday afternoon. The first across the line, and the winner of BNL's first Inner-Tube Derby was Dennis Berlin, followed closely by Brian Roesch and third place winner Gail Stong. The victor was presented with a trophy.

Immediately following the event, the tremendously successful Watermelon Scramble was held.

Next week's event will be the Crazy Fetch. See you in the pool at 3:30 next Friday!

FASTEN A SEAT BELT AND SAVE A LIFE

Every year, about 40,000 Americans are killed in car accidents.

If those figures aren't grim enough, then consider this: More than 1,500,000 people suffer disabling injuries.

According to the American Medical Association, nation-wide use of seat belts would have saved thousands of lives, dollars and untold hours of suffering and heartache. In fact, the AMA predicts we could probably save 5,000 lives every year and reduce the serious injury figures by more than one half.

Today, seat belts are inexpensive and easy to install - most automobile manufacturers include belt attachments as standard equipment.

To the complaint that "It's too much trouble to be always fastening and unfastening seat belts," the AMA points out that belts can be fastened in two seconds flat and loosened with a flick of the wrist.

Many drivers say they don't do much distance driving. But a 1958 survey showed that 47 per cent of all car deaths occurred at speeds below 40 m.p.h. - and 66 per cent took place within 25 miles of the driver's home.

Davis Aircraft Belts, now available at the Chevron dealers' on Long Island at a low installed price, have been checked by the BNL Safety Office and meet the most stringent standards.

UPTON RIFLE AND PISTOL CLUB

Al Lukas was top man in the Spring Small Bore Rifle Tournament with 362. Roy Domish was second with 340, and Pete Colombo was third with 326.

Al Lukas has proven himself the man to beat since he also took top honors in the Spring Large Bore Rifle Tournament with a score of 149.5. Judd Diener was second with 149.0, and Roy Domish was third with 148.25.

The next club meeting will be held September 6 at 8:00 p.m. in the Recreation Building.

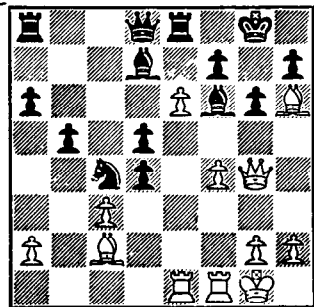
Large bore rifle shooting is scheduled to begin again on October 7, so it is not too early to begin rebuilding those rifles. Call Frank German for tournament details.

POOL SCHEDULE

The Swimming Pool will continue on its present schedule through Friday, August 31. During the month of September, the pool will be closed. An announcement of its reopening in early October will be made in the near future.

CHESS PROBLEM

White to move and win. Here is another position without that neatness and dispatch of a composed ending. But, in working over the rough edges, you may learn a little chess. You can pluck a real big feather to put in your hat if you can name the masters and the event, too! But how do you win?



ALL-STAR GAME ON WEDNESDAY, AUGUST 29, AT 5:15 P.M.

SPLASH PARTY

The 1962 Summer Swim Program will end with a big bang on Tuesday, August 28, with our annual Splash Party. All participants in our swimming lessons and on-site play session are eligible to take part in the festivities. **Pool admission is free.** There will be contests, fun, games and prizes. The pool doors will open promptly at 11:45. All participants are urged to eat a light lunch some time before 11 o'clock. The festivities will end at approximately 2:00.

WEDNESDAY DANCES

A summer of Wednesday nights of fun and dancing will end August 22. Come one, come all to this last dance; bid farewell to summer friends and meet new people as you dance to the music of Frank Campbell's Combo. Admission is only 50¢ and beer, soda, pretzels and potato chips will be available. Come alone, bring a date or friend. 9:00 p.m. is the time, Recreation Building 317, the place. See you there.

THE ALL-STAR GAME



by ROGER CALDWELL

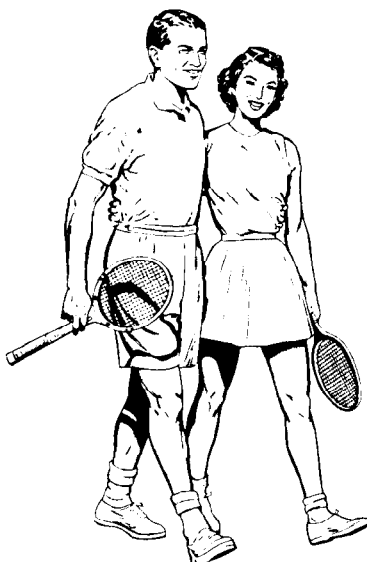
When the BNL Slo-ball leagues were formed last spring, the main idea was to segregate the fifteen teams into three good, better, and best leagues. Or, to be a little more candid, the strong teams, the perennial contenders were allowed to wage their more artistic battles without the sometimes disconcerting stumbling of the lesser teams, the also-ran teams were given a league of their own to provide an outlet for repeated frustrations, and the more inept outfits were lumped together into a sort of a senior Pee Wee league.

Best of BNL, the Brookhaven League is made up of the most competent young ball players and the old pros who have retired from hardball and football. Individual brilliance is the hallmark of the league.

The National League is characterized by discipline and teamwork. Sublimating their feelings of not being quite good enough to play with the best players, they have compensated with strong organization and group therapy. The result is that, as teams, they can occasionally knock off the individually better Brookhaven teams.

Like Maxim Gorky's "Creatures Who Once Were Men," the inhabitants of the Laboratory League (Get that originality: Brookhaven - National - Laboratory leagues) are so far down on the social scale that they no longer care for such ephemeral satisfactions as winning games; only that they get their weekly rations of canned beer and burnt hot dogs. They are remarkably adaptable creatures, playing with pick-up rosters and home-made strategy, and have great potential for survival.

Which brings us to the point I've been sledging at: I predict that the Laboratory league will win the three-headed monster All-Star game, Wednesday evening, August 29, at the Princeton field. What ungodly logic did I use to arrive at this ridiculous conclusion? Easy. The obvious advantage of greater numbers of better ball players will be largely nullified by choosing the four best players from each team. The excellent teamwork of the National teams will go for naught since the teams are broken up. And as for the individual brilliance of the Brookhaven gentlemen,



TENNIS TOURNAMENT

**MERKLE-AUSKERN
(Men's Doubles),**

RYAN (Ladies' Singles), WIN

HIGHLIGHTS OF TOURNAMENT PLAY

In the Ladies' Singles match played Wednesday, Barbara Ryan defeated Ruth Favro in straight sets 6-2, 6-2. Miss Ryan displayed a combination of shots which wore down her opponent; nevertheless, Miss Favro remained undaunted and gave a good account of herself. John Binnington, Vice President of the BERA Board, presented the championship trophy on behalf of BERA.

The following evening, the Men's Doubles finalists displayed their talents to an appreciative audience. The crowd repeatedly applauded the efforts of all four participants. The duo of Walt Merkle and Allan Auskern downed Andy Kevy and Henry Honeck 6-3, 7-5. Merkle and Auskern's long game and smashing serves proved the undoing of the losers.

This week's action will take place Thursday evening at 5:00 p.m. when the Mixed Doubles Championship will be decided between Hebard and Ryan, and Schoessler and Strauch. The following Tuesday, August 28 at 5:00 p.m., the Men's Singles will be held.

Come early for a choice view of the action. We are still in need of volunteers to act as linesmen and scorers. A big thank you from BERA goes to those people who have already been such a tremendous help.

I suggest that there is an analogy to the downfall of the over-specialized dinosaurs at the hands of the humble, but adaptable, mammals.

Arrivals and Departures

WELCOME TO BNL

ACCELERATOR	
Thomas J. Fey	Ext. 2410
INSTRUMENTATION & HEALTH PHYSICS	
Serafin R. Vargas	2374
Gerald L. Warner	2255
PLANT MAINTENANCE	
James G. Nekerman	639

RECENT DEPARTURES

BIOLOGY	
Penelope Riley	
INSTRUMENTATION & HEALTH PHYSICS	
John S. Handloser	
Hans R. Zulliger	
MEDICAL	
Emil Adamik	
NUCLEAR ENGINEERING	
Nancy Van Hook	

BOWLING LEAGUES FILLING UP

Entries are pouring in to the Recreation Office for this winter's Bowling Leagues. Practically all of last year's teams will be back, plus several newly-formed ones. There is still room for a few more new teams in some of the leagues, so rush your entry. Last year's teams are reminded that their priority to return to the same league expires if their entry is not in by August 24.

Several teams are still in need of one or two more bowlers - if you're interested, call G. Sabine Ext. 391. Preference seems to be for new bowlers (because of the advantage that comes with improvement over the season), but intermediate and high average bowlers are needed also.

Dates to remember: Aug. 24 - Priority for last year's teams expires; Aug. 31 - Deadline for all team entries; Sept. 17 - Season starts.

CLASSIFIED ADS

FOR SALE

1955 CHEVROLET - 2-dr. Bel Air V8 hardtop, good cond., std. trans., completely rebuilt engine. Must sell. Flying to California. \$195. Rodney Parsons, Ext. 384, or GR 5-9145.

1954 STUDEBAKER - Sports coupe, \$100. A. Campo, Ext. 2351, or SH 4-5046.

1958 PONTIAC - 2-dr. hardtop conv., r&h, power steering & brakes. Perfect cond., reason for selling: going into service. Asking \$950. Ext. 639, or SE 2-3338

1960 FIAT - 2 dr. sedan, r&h, windshield washer, w/w tires, two-tone grey/blue, 40 mpg, excell. cond. \$525. MO 5-5037

1952 CHEVROLET - Good cond., r&h, new battery, 4 good tires. \$180. Dr. B. Schultze, Ext. 301-69.

1956 CHEVROLET - 2-dr. Bel Air, auto. trans., r&h. Ext. 345 or 2776.

1956 HILLMAN CONV. - \$325. Yellow with red leather upholstery. Good condition. R. O'Rourke, AT 6-1067 or, after 5 p.m. Ext. 2120.

1955 DESOTO - Firedome Hardtop. Mechanically good, body rusted. \$100. R. Carr, Ext. 2108.

1958 RENAULT DAUPHINE - Engine, generator, front end & brakes rebuilt recently. Good tires, body & interior excellent. \$325. Charlie, Ext. 573, or SH 4-3312 after 5:30 p.m.

1958 FORD - 2 dr. sedan, 45,000 mi. one owner. Good cond. \$785. E. Gill, Ext. 2323 or JU 8-7331.

1955 MERCURY MONTCLAIR - 2-dr. hardtop coupe. Auto. trans. (recently changed), new mufflers & tail pipes. Tires, mech. good cond. Mittra, Ext. 2505.

CITROEN DS 19 REPAIR MANUAL - Dated March 1960. 150 pp of illustrated details plus all service operation instruction sheets in red hard cover binder. \$18. value for \$9. I. Winters, Ext. 2685.

1959 PLYMOUTH SAVOY CAMPER - Excell. cond., r&h, brand new tires, 2 snow tires, completely equipped for camping, folding seat, gasoline stove, table and camp stools, window screen, etc. \$850. Only for drivers with healthy legs. std. trans. Rudy, Ext. 2667, or SH 4-9694 after 5:30 p.m.

CAMP TRAILER - 16-ft. 1941 Atlantic, aluminum outside, sleeps 4, ice box, l.p. tank and stove, \$400. Fred, Ext. 2413.

PROPERTY - Lake Ronkonkoma, 100x100 corner lot at Patchogue Rd. & Chestnut St., near shopping center & schools. Ext. 567 or PA 7-3078 after 6 p.m.

BUNGALOW - 4 rms. & porch, completely furnished, with refrigerator. Gas, elect. & washer. Corner property. Asking \$3,500. Ext. 639, or SE 2-3338.

HOUSE - 3 bedroom ranch. Fully landscaped with blacktop driveway, in Bohemia. Ext. 2204, or LT 9-3689 after 6 p.m.

HOUSE - 7 rm, split-level on wooded half-acre in beautiful north shore community with

private beach rights. 3 bedrms., 1 1/2 baths, laundry & 26-ft. recreation rm., large living rm.. with stone fireplace. Custom built, many extras. SH 4-9877 evenings.

HOUSE - N. Bellport. \$93. mo. pays all. \$2,000 takes over existing mortgage of \$9,200. Aluminum siding, fenced-in, 3-bedrm. ranch. Full basement, storms & screens. AT 6-9248.

HOUSE - Patchogue, charming Cape Cod, walking distance to railroad, village, schools. 5 large bedrms; 4 downstairs, 1 upstairs with own air-conditioner. 2 full ceramic tiled baths. New furnace, gas h/w heat with separate controls for each floor. Wall to wall carpeting, 3-track storms & screens, finished playroom in basement, oversize garage & patio (incl. furniture). Professionally landscaped, with redwood fencing. Many extras. \$18,900. GR 5-5549 after 5:30 p.m.

14' RUNABOUT - Fibreglass bottom, Sea King dry as a bone. Plus: Masterchart trailer with winch, plus a 15 hp Evinrude outboard motor. Accessories include anchor and line, oar locks, oar, floor boards, 3 life cushions and Motor Manual. Everything for \$325.00 G. Sabine, Ext. 391, or JU 8-5586.

1957 18' REVEAU - Fully equipped with Navy top windshield to motor. 1959 50-hp Johnson outboard with elec. starter. 1959 Biscayne trailer, cushions, two 6-gal. gas tanks with 15' hoses, anchor & brand new steering wheel, control box and cables. \$1,100. J. Backes, GR 5-9115 after 6 p.m.

1955 23' CHRIS-CRAFT, 95 hp, sleeps 3, table, head, stove & sink on formica top with full formica back splash. Completely refinished this spring, A-1 cond. \$2,500. GR 5-7241.

14' BARBOUR SKIFF - 25 hp, 1956 Johnson motor. Boat in water. Remote controls, 6 cushions. \$200. takes all. John Cook, Ext. 567, GR 5-4580.

12' SKIMMER RUNABOUT - Plus 12 hp Sea King outboard, includes 6-gal. gas tank with gauge, motor stand, spare prop, canoe paddle, self-bailer, steering wheel, throttle and shift controls, excell. cond. \$225. MO 5-5037.

18' DORY - With Wisconsin inboard engine. Engine overhauled beginning of season. Ideal for fishing. \$125. Ferrigno, Ext. 301, or GR 5-3109.

14' PLYWOOD RUNABOUT - Hull completely fiberglassed, boat cover, controls, 30-hp Johnson, \$400. William Stars, Ext. 2407, or PEconic 4-5104 after 6 p.m.

1 1/2 HP OUTBOARD MOTOR - Evinrude, Sportsman model, good running condition. \$25. Ext. 2381.

SNIPER CLASS SAILBOAT - Old but in excell. repair. May be seen at Berth 86, Bellport Docks. \$150. Ext. 2237.

LAST TRY - Small H.D. Motorcycle and sail-fish hull. Best offer. Jeff, Ext. 322.

COMPLETE MOVIE OUTFIT - Bell & Howell 16 mm magazine camera, twin lens, sound projector, extra 1 1/2" f/1.9 projection lens, three 1600-ft reels, microphone, light bar with four floodlights, film editor viewer with rewind wheels, radiant screen. Excell. cond. Orig. cost \$1,200. Must sell - \$425. Sandy Wagner, Ext. 618.

PICKERING STEREO CARTRIDGE 381E - With .001", .0007" diamond styli and .0027" sapphire. Only .001" is slightly used. Priced \$60, will sell for \$29. Irvin Meyer, Ext. 2222.

GRETCH ELECTROMATIC GUITAR AMPLIFIER - 15 watts, more than enough volume for any size hall. List \$110., \$40 final. B. Vitale, Ext. 2114.

SURF SPIN ROD - 11 ft. custom made, Luxor reel, new. John Jost, Ext. 361.

LAWN MOWER - Reel type, Montgomery Ward, \$4. Sharpen this and you'll have a \$25-job. Frank Nichik, Ext. 623.

ELECTRIC MOTOR - Westinghouse 1/2 hp, Hevi-Duty type, 110 v, 5.6 amp. Suitable for all rugged applications. Continuous duty. \$18. Frank Nichik, Ext. 623.

BEDROOM SET, King, solid cherry. Westinghouse 9.5 cu. ft. refrigerator w/freezer compartment. Keystone 8 mm magazine movie camera. RCA 21" TV console. Gene. Ext. 2461.

TV - 21" Philco table model, good cond. \$50. GR 5-4627 after 5:30 p.m.

SINGLE BED - With box spring and mattress, \$45. Colonial double bed, maple, \$20. Two studio beds, brand new, firm innerspring mattress & matching boxspring, orig. cost, \$90. ea.; selling for \$60. ea. Ext. 664.

ROLLEIFLEX - Tessar 3.5 lens; Kodak Starflex camera and flashgun, \$8. Drafting instruments, Keuffel & Esser, excellent cond., \$18. Sadofsky, Ext. 354.

POODLE - Small Miniature male, 3 mo. old, silver, championship line, last one in litter, reasonable. HR 2-0658.

ARTIFICIAL LOGS - & Brass andirons, \$10. each set. Agnes, Ext. 301-30, or AT 1-8390 after 5:30 p.m.

DRESSES - Brand name deluxe dresses, some cottons, some wool, all drycleaned and like new. Very reasonable. Sizes 8, 9, 10. GR 5-8676.

WOMEN'S CLOTHING - Size 12-14, reasonable. EM 3-6214.

PERMOFLUX 12" HI FI SPEAKER - Will throw in older 12" speaker. \$10. Sadofsky, Ext. 354.

SOLUTION TO CHESS PROBLEM

This game was played between Yates (White) and Gunsberg, in Chester. Yates won:

WHITE	BLACK
1. P-B5	
(A good move, better than	
1. P x B	1. R x R
2. R x R	2. N-K6)
	Black fought back with
1. . . .	1. P-Q6
2. B x P	2. B x KP
3. P x B	3. Q - N3 Check
4. K - R1	Black resigned because
	4. R x P
5. R x R	5. Q x R
6. Q x Q	6. P x Q
	is capped by
7. R x B . . .	