

# the Bulletin Board

VOLUME 16, NUMBER 1

Published by the BNL Personnel Office

SEPTEMBER 11, 1962

## FREEDOM BOND DRIVE

The Treasury Department has asked that a campaign be conducted during the month of September to increase participation in the Payroll Savings Plan, which has been designated as the Freedom Bond Drive.

The Freedom Bond Drive is the most important U.S. Savings Bonds campaign since World War II, and the first nationwide Savings Bonds campaign since the Korean War.

The money that is put into Savings Bonds not only helps pay for defense, but provides the economic strength and stability without which a powerful defense is impossible.

Brookhaven National Laboratory and other organizations from coast to coast are participating in the Freedom Bond Drive. This month, all employees have been asked to consider signing up for these Bonds of Freedom through payroll savings or to increase their savings if they have already enrolled.

## BROOKHAVEN LECTURE SERIES TO RESUME SEPTEMBER 19, 1962

The nineteenth lecture of the series, and the first of this season, will be given by Walter L. Hughes of the Medical Department. The lecture is entitled "The Renewal of Cells and Molecules - The Fountain of Youth." The lecture will be held, as in the past, in the Lecture Hall, at 8:00 p.m., on September 19, 1962.

A buffet supper (\$2.75) will be served at the Brookhaven Center before the lecture, beginning at 6:00 p.m. Reservations should be made at least one day in advance by calling Ext. 2302 before 5:00 p.m., or Ext. 2453 in the evenings.

Refreshments will be available in the Research Staff Lobby following the lecture.

## DISCOUNT TICKETS

Discount coupons for "I Can Get It For You Wholesale," playing at the Shubert Theatre in New York City, are now available at the Recreation Office. This coupon is good for one or two reserved seats for the performances, Monday through Saturday, to September 22.

The Recreation Office is only open Monday, Wednesday and Friday for all ticket services.

## MEDICAL RESEARCH CENTER

## CHAPEL DEDICATED



From left to right are, Dr. Charles Falk, Reverend Frederick Smith, Rabbi Baruch Katz, Reverend John Madden, and Dr. Lewis K. Dahl.

The dedication service for the new Medical Research Center Chapel was held on Wednesday, September 5, at 11:00 a.m. Approximately fifty invited guests, patients, and members of the Medical staff attended the ceremony. The members of the clergy who participated in the program had worked closely with the staff of the Medical Department in formulating plans for the Chapel.

Greetings from the Laboratory were given by Dr. Charles E. Falk, Associate Director, and Dr. Lewis K. Dahl, Chief of the Medical Research Service, spoke on behalf of the Medical Department. The Invocation was delivered by Reverend Frederick Smith of the Bellport Methodist Church. Dr. Baruch Katz, Rabbi of the Temple Beth El of Patchogue, gave the Prayer of Dedication, and the Benediction was pronounced by Reverend John J. Madden, Pastor of St. John the Baptist Roman Catholic Church in Wading River.

The Chapel will serve to fulfill the spiritual needs of all people of all faiths through prayer and meditation. The clergymen spoke briefly on the value and purpose of the new Chapel, and expressed gratitude to all those who were instrumental in planning and bringing the Chapel into fruition.

## SOCCER

A soccer activity will be held on Field One, on Wednesday, September 12, at 5:30 p.m.

## BASEBALL TICKETS

Four box seats are still available for each of the Met games being played on Sept. 21 and 23 at the Polo Grounds.

## 1962-63 CONCERTS TO BEGIN IN OCTOBER

The BERA Concert Group has been hard at work planning the program for the 1962-63 season. The concerts will be held in the North Room of the Brookhaven Center at 8:30 p.m., as they were last season. The upcoming program is as follows:

October 23 JUILLIARD STRING QUARTET  
December 5 GARY TOWLEN, pianist  
February 26 TRIO DI BOLZANO  
March 20 DUO DI ROMA  
May 2 NEW YORK CHAMBER SOLOISTS

We urge you to make your plans now, and to remind your friends of the BERA Concerts. Season tickets will be on sale soon. Watch for a list of ticket sellers.

### SEASON TICKET

Employee or Family Member \$10.00 ea.  
Employee's Children under 18 5.00 ea.

### SINGLE ADMISSION

Employee or Family Member 3.00 ea.  
All Children under 18 1.50 ea.  
Guest (non-employee) 3.50 ea.

## ELIGIBILITY AND ENROLLMENT FOR THE MEDICAL INSURANCE PLAN

### Family Benefits

When a single employee marries and wishes to change from the Single to the Family Plan, application should be made at the Personnel Office. If the application is made within ninety days of the date of marriage, no medical examination will be necessary. After ninety days evidence of insurability will be required.

### Maternity Benefits

Maternity coverage for the wife of an employee with a Family Plan becomes effective nine months after the application for family benefits is approved.

### Student Benefits

When the child of an employee becomes 19, his coverage under the Family Plan is automatically cancelled. By payment of an extra premium equivalent to the premium paid by a single employee, children over age 19 are eligible for coverage if they fulfill all of the following conditions:

1. They are unmarried and make their home with the employee;
2. They are fully dependent upon the employee; AND
3. They are attending an accredited educational institution on a full-time basis.

## TICKETS STILL AVAILABLE FOR "INNER SPACE"



There are still some tickets available for the Brookhaven Divers Club presentation of "Explorations of Inner Space." All divers, pseudo-divers, underwater enthusiasts, photography bugs, and lovers of adventure who wish to attend are urged to get tickets in advance. There will be only a limited number of tickets sold at the door.

Mr. Owen Lee, master diver of the Calypso oceanographic expeditions, will present his full-length color film on Thursday, September 13, at 8:00 p.m., in the Lecture Hall.

With Captain Cousteau's famous Aqua-lung diving team, Owen Lee penetrates beautiful coral reefs where the fish have never known hook or spear-gun. The divers mingle peaceably with the throng of brilliantly-colored denizens of the Red Sea, the Mediterranean, the Indian Ocean and Atlantic reefs. They observe for science and bring striking new techniques to undersea exploration. Captain Cousteau's famous research ship, the Calypso, is the star of this undersea adventure.

Those who attended last year's showing of "The Silent World" will remember the beauty of Cousteau's celebrated Oscar-winning film. This year's presentation will exceed all expectations for breath-taking beauty and excitement.

Remember Thursday, September 13, at 8:00 p.m. Be there and bring your friends. Tickets are available at the Recreation Office, or from R. Young, Ext. 591, J. Lauer, Ext. 2695, or E. Forsyth, Ext. 2263.

## NEXT BERA MOVIE

### "A SUMMER TO REMEMBER"

#### Next Week

Thurs., Sept. 20 at 8:30 p.m. in Lecture Hall

"A Summer to Remember" is a 1961 film from Russia. The short subject will be Martha Graham's "Night Journey."

Series tickets are on sale at the Lecture Hall at show time.

## TUITION REFUNDS

All tuition refund requests should be submitted to the Personnel Office, 58 Brookhaven Avenue, two weeks prior to enrollment in the course.

## Arrivals and Departures

### WELCOME TO BNL

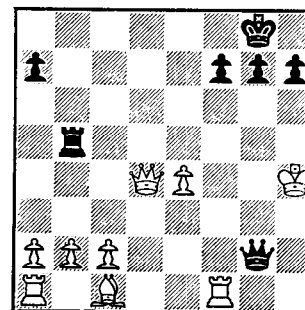
|                                  |          |
|----------------------------------|----------|
| AGS                              |          |
| Donald F. Bastedo                | Ext. 604 |
| APPLIED MATHEMATICS              |          |
| Evelyn Gottesfeld                | 2724     |
| CENTRAL SHOPS                    |          |
| Robert A. McCabe                 |          |
| CHEMISTRY                        |          |
| Srinivasan Raman                 | 2477     |
| George A. Gregoriou              |          |
| COSMOTRON                        |          |
| Frank G. Heimroth                | 2187     |
| Leonard C. Kalmar                | 2156     |
| Helen M. La Sauce                | 2114     |
| INSTRUMENTATION & HEALTH PHYSICS |          |
| Veljko Radeka                    | 618      |
| NUCLEAR ENGINEERING              |          |
| Donald H. Scharadin              | 439      |
| PHYSICS                          |          |
| Paul Craig                       | 2603     |
| Theodore E. Erickson             | 686      |
| Janet Schnecke                   | 2689     |
| Robert Stump                     | 2505     |
| PLANT MAINTENANCE                |          |
| Bernard F. Belligan              | 639      |
| Edward Malcolm                   | 2389     |
| Robert Rasmussen                 | 2389     |

### RECENT DEPARTURES

|                                  |  |
|----------------------------------|--|
| INSTRUMENTATION & HEALTH PHYSICS |  |
| Robert J. Champagne              |  |
| MEDICAL                          |  |
| Samuel D. Kaplan                 |  |
| PHYSICS                          |  |
| Frank Addressi                   |  |
| J. Thomas Conaway                |  |

John J. Cooper, who was employed as a Steamfitter in the Plant Maintenance Division since 1947, passed away on September 2.

## CHESS PROBLEM



The advice not to hover about lost pieces is shown in this problem. White is far ahead of material, still Black has a forced mate in sight. From this position it is Black's move and win. How? Answer elsewhere in this week's BULLETIN BOARD.



## BERA BOWLING

### BOWLING STARTS NEXT WEEK

The 1962-63 bowling season starts next week, with our five leagues opening up on Monday, Tuesday and Wednesday, September 17, 18, and 19 at the Port Jeff Bowl and at Maggios. All leagues start at 6:00 p.m. sharp!

Any additions to the rosters (and payments for same) should now be given to the league secretaries - not the Recreation Office. Team captains of all but the Tuesday leagues have met (Tuesday league meetings this week) and the following were elected: **Monday - Maggios**, J. Austin, Secretary, J. Kampe, League Representative; **Wednesday - Maggios**, W. Stanford, Secretary, W. Milian, League Representative. Contact L. Baker or E. Fales for information on the Port Jeff Leagues.

Remember, bowlers do not become eligible to bowl until twenty-four hours after they have been added to the roster.

Arrangements have been made for group purchases of team shirts at \$5.00 each, including lettering of team name.

Sample shirt and ordering information can be seen at the Recreation Office on Monday, Wednesday, and Friday. Also available is a catalog of bowling equipment at discount prices.

### RECREATION SCHEDULE CHANGES

**SWIMMING POOL** — Summer Season ends Aug. 31. Will remain closed during September and reopen in early October.

**GYMNASIUM** — Closed for **ALL** activities from Friday, Aug. 31 throughout the month of September. Reopens early November for evening activities.

**RECREATION BUILDING** — As of September 4 will be open on the following schedule: Mon., Tues., Wed. and Thurs. 5:00 p.m. to 11:00 p.m.

**RECREATION OFFICE** — During the first three weeks of September: Open **ONLY** on Mon., Wed., Fri. for information, BULLETIN BOARD articles and ticket services.

### KEYS TO BROOKHAVEN CENTER

If any member of the Brookhaven staff wishes to use the Center during the hours it is normally closed, please pick up a key from the Laboratory Police Headquarters, and return it after you vacate the premises.

## BRIDGE

The results of last week's game were:

### N-S

1. Ellie Hedges and Sandy Wagner
2. Harold Schwarz and Gus Allen

### E-W

1. Lee Gaynor and Jack Tillinger
2. Max Schmaeler and Jack Cassidy

One of the most interesting hands was this one:

### N

S. JXXX  
H. A J 10 XX  
D. XX  
C. AK

### W

S. K Q 9 X  
H. Q 8 XX  
D. J X  
C. 10 XX

### S

S. A 10 X  
H. X  
D. A 9 XXX  
C. 9 XXX

### E

S. XX  
H. K 9 X  
D. K Q 10 X  
C. Q J XX

Top-on-the-board went to the N-S winners when Ellie Hedges, as North, opened 1H. Her partner felt a 1NT response was unsatisfactory with a singleton heart, and yet the hand was too weak for a 2D bid. He bid 1S, was raised to 2S, and made nine tricks on a diamond lead.

At the other tables, the final contract was 2H, or 2NT, which were unmakeable. With a little cooperation from the defense, 4S can be made. A diamond is opened, declarer ducks and wins the continuation with the ace. He cashes dummy's club, plays ace of hearts, ruffs a heart, ruffs a club, ruffs a heart, ruffs another club, and ruffs another heart. That makes nine tricks. Now he plays a diamond. The J-X in trump must win a trick en passant. If West ruffs high, dummy ruffs with the jack.

The next game is this week, Thursday, September 13, at 7:45 p.m. in the Recreation Hall.

## CURIOUS ABOUT SMALL CAR ACCIDENTS?

The latest annual issue of the National Safety Council's "Accident Facts" (1962), reporting on a special study made in 1960, makes the following comparisons of fatal automobile accidents.

Small cars (under 2800 pounds) - 21.2% of all other vehicle accidents involve pedestrians, but only 9.4% of small cars get the unwary walker.

Bicycles must be quicker - 1.4% of all bicycle victims are hit by big cars - small cars show 0.0%.

Small cars run into fixed objects with fatal consequences fewer times - 11.8% vs. 16.2% for big cars.

Small cars hit fewer railroad trains, too - 1.2% vs. 5.5%, and apparently stay upright more often when run off the highway - 8.2% fatalities for small cars, 13.5% for others.

The chances are bad if a small car overturns on the highway - 8.2% fatalities in all small car accidents vs. 1.6% in accidents involving big cars.

A big difference, as might be expected, occurs when the small car collides with a large one - 60% of all small car fatalities occur in collisions with other vehicles vs. 39.5% when larger cars collide.

**Conclusion:** Since small cars can avoid pedestrians, trains, bicycles and fixed objects better than big cars can, and run off the highway better, it appears that the small car is best in an evasive action! (Evasive action - defensive driving - good with big cars, too!)

## BULLETIN BOARD CLASSIFIED AD POLICY

1. Employees only may place ads in THE BULLETIN BOARD.
2. **All items advertised for sale must be property of an employee.**
3. Real estate ads **will be accepted only when they involve change of residence by an employee, and are accompanied by a statement of ownership and change of residence.**
4. No ads for business purposes will be accepted.
5. **Ads must be submitted in writing** (preferably typed) **by 3 p.m. Friday** for inclusion in the next week's newspaper. Address the ads to THE BULLETIN BOARD, 58 Brookhaven Avenue, or deliver them to the Personnel Office. Ads must contain a signature and Laboratory telephone extension. If you do not want your name to appear when the ad is printed, put it in parentheses.
6. Ads are run on a space available basis. If your ad does not appear due to space reasons, it will be held for inclusion in the next issue of THE BULLETIN BOARD.
7. If you wish to repeat an ad, it must be resubmitted.

## SOLUTION TO CHESS PROBLEM

### WHITE

1. ....
2. K x R
3. K-N5
4. K-B4
5. K-K5

### BLACK

1. R-R4 Check
2. Q-R6 Check
3. P-R3 Check
4. P-N4 Check
5. Q-K3 Mate.

## CLASSIFIED ADS

## FOR SALE

1960 FIAT "600" - 2-dr. sedan, 40 mpg, r&h, w/w tires, extras. 35% insurance disc. when registered as second car. Ideal for traveling back and forth to the Lab. \$495. R. Kerzner, Ext. 2411 or MO 5-5037.

1956 HILLMAN MINX CONV. - Yellow with red leather uphol. Fine cond. Must sell immediately. 30 mpg. \$285. R. O'Rourke, AT 6-1067 or Ext. 2120.

1954 CHEVROLET - 4-dr. sedan, black, auto. trans., power steering, heat. Sentimentally sound. \$100. Ext. 748 or 751-0288 after 6:00 p.m.

1953 CHEVROLET - 2dr. Wonderful cond.; new brakes, tires, muffler, battery. Only \$195. Meo, Ext. 423.

1961 FORD CONV. - (Galaxie Sunliner) Pale yellow/white top. 6 cyl., auto. trans., push-button radio, best heater, deluxe interior. Perfect cond., original owner, purchased July '61. Reason for selling: large family of large dogs; Del Sieger, Ext. 2169 or GR 5-3195 evenings.

1955 VOLKSWAGEN - 54,000 mi. black, sun roof. YA 4-3492 after 5:30 p.m.

1956 T-BIRD - Black conv., low mileage, like new, 4 extra snow tires. GR 5-1516.

1957 OLDSMOBILE - Good cond., power steering and brakes, auto. trans., two-tone blue, radio. Owner leaving country on Sept. 26. Ext. 529 or 2370.

1953 PLYMOUTH COUPE - Std. trans., good transportation. \$60. Hildebrand, Ext. 2597 or HR 3-5025 evenings.

1960 SUNBEAM ALPINE - White, 2 tops, wire wheels, \$1600. Ext. 2558.

1955 MERCURY MONTCLAIRE - Two door, hard top sedan, V-8, auto. trans. Mittra, Ext. 2505.

HOUSE - 85'x125'. \$17,000 corner Cape Cod. 4 bedrms., living rm., dining rm., kitchen, finished basement, double garage. Stone & brick front, patio, landscaped, fenced. Storms and screens. Nice neighborhood, Shoreham. J. McDonald, Ext. 2245, or SH 4-3917.

HOUSE - Bellport, 2 bedrms., cement block stucco, furnished. Large utility fireplace, radiant heating, built-in TV and music center. Within village. Great South Bay view. AT 6-0348.

21' MORGAN LUHRS SEA SKIFF - Powered by 60 hp Chris Craft engine. Complete with cushions, anchor, lines, ship-to-shore radio, full winter canvas covering, new Navy top & new nautolux covering on bow. Newly painted and varnished. Must be seen to be appreciated. \$2,300. GR 5-8268 after 6 p.m.

12' SKIMMER RUNABOUT - Forward deck, includes 12 hp Sea King outboard, 6-gal. gas tank, motor stand, spare prop, canoe paddle,

self bailer, steering wheel, throttle and shift controls. \$195. Richard Kerzner, Ext. 2411, or MO 5-5037.

WOLVERINE RUNABOUT - 14', excell. cond., front and middle decks, steering, \$100. Racing Hydro, 8', good cond., \$15. Motor Scooter, Cushman, needs carburetor, manifold, otherwise perfect cond., \$50. EM 3-6290 after 6:00 p.m.

FISHING EQUIPMENT - Surf rod, 9½' black glass with Mitchell 302 spinning reel, \$25.00. Surf rod, 11½' custom glass, cork grips, \$20. Boat rod, black glass with Penn trolling reel, \$10. Bill, Ext. 2255.

BABY BATHINETTE - In very good cond. \$10. Ext. 706.

SPEED GRAPHIC - 3¼x4¼, F.4.7-127 mm lens Graflex flash gun, 9 cut film holders, 1 film pack adapter, lens shade, perfect condition, w/case. \$100. Dick Malloy, Ext. 567.

BICYCLE - 24" boy's, good riding condition. \$10. LT 9-3269.

HARTMAN SHIP-TO-SHORE RADIOTELEPHONE - 30 watt, 16' antenna and deluxe swivel base. Brand new, never operated. Mike Stone, Ext. 2520, or HR 2-0552 after 6:00 p.m.

6" TABLE SAW - In very good condition. Grinder and buffer wheel included. \$89.00 value, for \$25.00. Walt Freese, Ext. 2520.

SKID CHAINS - New, for 13" car tires, \$12. New jack lift, \$4. E. Schackow, Ext. 301-30.

21" PICTURE TUBES - For RCA television. 2 rebuilt, but in good cond. Guaranteed to work or money back. \$8.00 each. Jim, Ext. 471.

CRIB MATTRESS - Like new, not Bennett special. \$10. Jim, Ext. 471.

ARGUS 300 PROJECTOR - For slides, \$20. Girl's bicycle 24", \$6. Steamiron, \$4. Toaster, almost new, \$5. Bath scales, \$1. Owner leaving Lab. Ext. 629, or AT 6-1225.

WASHING MACHINE - Sears wringer-type, about 6 yrs. old. Good cond. \$25. Mary, Ext. 2409.

GERMAN INSTRUCTIONS GIVEN - If interested call AT 6-0147.

DINING ROOM SET - Full size, mahogany, table, 6 chairs & buffet. Good cond. AT 1-8185 after 6:00 p.m.

RECORD PLAYER - Decca portable, \$35. Electric iron, \$5. Toaster, side loading, \$2. Single burner butane picnic stove, \$5. Alan Kemp, Ext. 2649, or AT 9-1646.

CRIB & MATTRESS - In very good cond., \$15. AT 6-8849.

CAMERA - 35 mm RICOH 519 f1.9 with case, light meter, and lens hood in separate leather cases, self timer, two filters, exc. shape. \$60. Ext. 525.

TYPEWRITER - Royal de luxe. Excell. cond. \$50. Ext. 2505.

BABYSITTING - Will care for one or two preschool children between 8:00 a.m. and 5:30 p.m. Ext. 471 or AT 1-7604.

## WANTED

BICYCLE - Boy's 26". W. Lewis, Ext. 2278.

VIOLIN - Full size. W. Lewis, Ext. 2278.

DRUMS - Cy, Ext. 2708.

ROOMMATE - To share house or apartment. Ext. 772 or AT 1-7560. Steve Perry.

## FOR RENT

UNFURNISHED APARTMENT - Very nice two bedroom apartment, close to the Lab. Available Oct. 1. Jack, Ext. 2413 or YA 4-3324 evenings.

FURNISHED APARTMENT - 3½ rooms, bath, kitchen, basement, carport, ½ block from stores in East Moriches. \$85. per mon. incl. all utilities. Couples preferred. Immediate occupancy. Ted Moleff, Ext. 2314.

APARTMENT - Patchogue, 5 rooms, bath, heat, hot water, porch and private entrance. 5 min. from village. Inquire 58 Cleveland St. or call GR 5-8222. Adults only. \$85. per mo.

## CARPOOLS

Would like to join or form carpool from Bayshore-Isip area. S. Kern, Ext. 2689.

Would like to form a carpool to and from CCNY-Upton, Monday and/or Thursday evenings. Mike Rothbart, Ext. 680 or 2208.

Wish to form a carpool to Adelphi College, Garden City. Anyone interested, please call Ed Scalsky, Ext. 301-3.

Carpool would like additional member from Brentwood-Central Isip area. D. Engelberg, Ext. 2735.

Rider desires transportation from Dunton Ave., East Patchogue to the Laboratory. Ext. 2700.

Looking for riders, or would like to join or form carpool from Oakdale and surrounding area. Frank Chandler, Ext. 2380.

Anyone interested in forming a carpool from the Lab. to Hofstra on Monday and Wednesday please contact R.M. Brown, Ext. 455 or P. Montemurro, Ext. 2552.

Driver requests information concerning carpools in Deer Park, N. Babylon area. Call Jack, Ext. 2191.

## LOST &amp; FOUND

LOST - In AGS Linac area, 4 keys on a key chain with a Geneve/Suisse emblem. Mary Semerjian, Ext. 664.

LOST - Loose leaf notebook. 8½x11. R. Chrien, Ext. 429.

FOUND - Two keys in reception room of Bldg. 815 Sept. 4. Personnel Services, Ext. 2107.