

the Bulletin Board

VOLUME 16, NUMBER 3

Published by the BNL Personnel Office

SEPTEMBER 25, 1962

CHANGES IN THE CAFETERIA

A third food station was installed in the Cafeteria this week where sandwiches will be made during the lunch hour. This new sandwich line will speed-up lunch service considerably. Three coffee urns have been installed, and fresh coffee will be supplied at the new sandwich station.

Thick shakes will now be served throughout the day. A soft ice cream machine will also be installed in the near future.

BERA OPERA SEASON OPENS

The BNL Opera Club is starting its new season next week. The purpose of this club is to obtain tickets for Metropolitan Opera performances under the auspices of the Metropolitan Opera Guild Educational Division.

The Opera schedule will be made available approximately one month in advance. Orders may be placed by any employee for a limit of **four tickets per order** at any price for any performance. Immediate payment is required once it is determined that the requested tickets are available.

A special feature of the plan is that the club is entitled to up to fifty tickets per year at a 20% discount on tickets under six dollars. Discount tickets will be available on a "first come, first served" basis, although the club reserves the right to limit the number of such tickets available to any individual.

The Recreation Office will handle the Opera Club ticket service. The price list of seats, as well as the Opera schedule will be available at the Recreation Office, 3 Center Street, starting October 1. Orders may be placed on Monday, Wednesday, and Friday between the hours of 12:00 p.m. and 2:00 p.m. only. All ticket orders, accompanied by a check, must be placed **two weeks** in advance.

FOLK DANCING

TO RESUME NEXT WEEK

There will be folk dancing every Monday evening from 8:00 p.m. to 11:00 p.m. at the Recreation Hall beginning on October 1. All are welcome.

THE GROUNDS MAINTENANCE GROUP



The 80-ton crane loading shielding blocks

The Grounds Maintenance Group of the Plant Maintenance Division consists of approximately seventy-five individuals whose widely varying skills contribute toward the efficient functioning of the Laboratory. The group's several sections include; grounds, sanitation, rigging, and heavy equipment. Headquarters are located in a group of buildings on West Princeton Avenue. Motor repair, winterizing of Laboratory vehicles, and upkeep of heavy machines are handled in one building. Other buildings are used for storage of machinery, including tractors, plows, concrete mixers, bulldozers, graders, rollers, road sweepers, and bucket loaders. Group offices are also located in this area.

The various crews handle a diversity of assignments involving many types of machinery. One of the two parts of the grounds section is responsible for servicing the Laboratory's lawns, which comprise some three hundred acres, about the size of two average golf courses. In the spring, as many as eight

(Continued on page 2)

Grounds Maintenance—Cont'd.

men may be assigned to this task, but on a year-round basis five men do all the mowing. The crew also plants trees, shrubs, and grass, and keeps the site clean at all times. Various phases of maintenance are the responsibility of the other section of the grounds crew. They assist in moving buildings, constructing roads and sidewalks, and in maintaining about thirty-five miles of paved road, twenty acres of parking lot, and four miles of railroad track. This crew also does some of the concrete work on Laboratory buildings and makes specially shaped materials used in the high density shielding blocks.

The sanitation crew removes waste materials to the incinerator or dump and operates the sewage disposal plant. Insect control is another important aspect of the crew's functions.

The rigging section's five crews are charged with moving both heavy and delicate material and equipment. These crews deliver various components to the large machines, including the AGS, Cosmotron and the 80" Bubble Chamber. They assist when possible in the initial installation of these large components.

Included in the Grounds Maintenance Group are the heavy equipment operators, who are assigned to the various rigging crews. The Laboratory's motor vehicle fleet of about two hundred and fifty vehicles is maintained and serviced by these men. At present, the largest piece of equipment is an eighty-ton crane. The heavy equipment operators run and repair bulldozers, road graders, bucket loaders, tractors, and tractor trailers. Fork lifts, up to twenty-ton capacity, are used for rigging work and occasionally for moving buildings, and a four-wheel-drive fork lift is used for traveling over rough ground. The heavy equipment operators also maintain many of the motor generators throughout the site, including the set that supplies auxiliary power to the hospital.

A visitor to the Grounds Maintenance buildings would find approximately one hundred and fifty tons of salt stored for use in winter ice control, and one hundred and fifty cubic yards of screened sand ready for use on icy and snowy roads. On the next snowy morning, this group will be busy clearing snow off the roads and parking lots to make it possible for the Laboratory to continue in operation.

Arrivals and Departures**WELCOME TO BNL**

| | | |
|---------------------------|------|------|
| CHEMISTRY | | |
| Hans-Joachim Ache | Ext. | 732 |
| Thomas F. Moran | | 629 |
| Neil Purdie | | 614 |
| FISCAL | | |
| Joseph J. Wittman | | 2695 |
| MEDICAL | | |
| Katherine Conkling | | 301 |
| Marie L. Kalousek | | 301 |
| Luis Rizo-Patron | | 301 |
| PHYSICS | | |
| Treavor Bacon | | 792 |
| George Barr | | 2623 |
| Deirdre E. Bluhm | | 2600 |
| Otis R. Gilliam | | 570 |
| PLANT MAINTENANCE | | |
| William J. Hysell | | 639 |
| SUPPLY & MATERIEL | | |
| George T. Leverock | | 2704 |
| Richard Thompson | | 553 |
| Harold E. Vanderoeff, Jr. | | 2704 |

RECENT DEPARTURES

| | |
|------------------------|--|
| CHEMISTRY | |
| Helge T. Von Koch | |
| MECHANICAL ENGINEERING | |
| Gerald Soltz | |
| MEDICAL | |
| Stuart Lippincott | |
| NUCLEAR ENGINEERING | |
| Yoel Tikochinsky | |
| PHYSICS | |
| Harvey Marshak | |
| Inder S. Mittra | |
| Madan L. Sehgal | |
| Bice Zorn | |
| Gus Zorn | |
| PLANT MAINTENANCE | |
| John L. Potokin | |

VISITORS

The German Study Mission, which is made up of experts in research planning will tour the Laboratory on Wednesday afternoon, September 26.

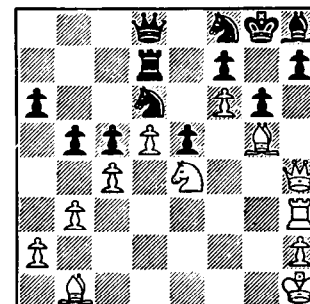
SHUTTLE BUS SERVICE

Bus A and Bus B, having served BNL employees faithfully throughout the summer months, are planning to retire from active service. The shuttle service, however, has proved extremely popular and will continue during the winter with a change in the routes and time schedules.

Buses A and B will be succeeded by Bus N and Bus S. Bus N will travel in a northerly direction, starting at the shops area, and Bus S will proceed to the south, starting at the 80" Bubble Chamber (Building 919). A new route will be in effect which will include the Critical Facility Area (Building 526). A schedule will be distributed in the near future giving the exact times the buses will arrive at the various stops, and a diagram of the routes will be shown.

CHESS PROBLEM

In this week's problem it is White's move and win. Black's position is cramped, but solid looking. White, therefore, has to decompose Black's position. Answer elsewhere in this week's BULLETIN BOARD.



Last year there were 15,500 accidents on golf courses. But it beats staying around the house, falling off ladders and sticking your finger in the mower.

SOCCER

There will be a soccer activity Wednesday evening, September 26, at 5:30 p.m., on Field One.

THEATRE GROUP MEETING

Tues., Oct. 2 — 8:30 p.m. — Recreation Hall

A prepared reading of "This Music Crept By Me On The Water," by A. MacLeish, will be presented by Jim Powell. The next production will be decided upon at this meeting. All members and interested parties are invited to attend.

BOWLING SPLIT SEASON

The question of whether or not to adopt a split season for the 1962-63 BNL bowling was hotly contested, with a final majority of two votes in favor of the split season! Votes were cast at the team captains' meetings held earlier this month. This means that each league will have a winner for the first half of the season, plus a winner for the second half. The two winners will meet at the end to determine first and second places. Details of the rules covering this arrangement will be worked out at the next Bowling Board meeting. Bowlers should make their wishes on any specific rules known to their League Secretary or Representative. Secretaries and Representatives (in that order) are: Green League - J. Austin and J. Kampe; Red League - L. Baker and E. Fales; Blue League - D. Stelmaschuk and J. Weiss; Purple League - W. Stanford and W. Milian; Pink League - V. Austin and G. Fales.

BOWLERS — Watch for announcement of BNL 666 Club!

SOLUTION TO CHESS PROBLEM

| WHITE | BLACK |
|-------------------------------|-----------|
| 1. N x N wins because | 1. R x N |
| 2. B x P | 2. RP x B |
| 3. Q x B mate if | 2. N x B |
| 3. Q x P check | 3. K-B1 |
| 4. Q x B and mate next or if | 2. BP x B |
| 3. P-B7 check and White would | |
| loose it's Queen. | |

DOUBLES OF 3NT

In his splendid book, "Why You Lose at Bridge," the late S.J. Simon cautions against doubling 3NT contracts when holding distributed high cards as in this case. You sit West holding: K Q X; A X X; A Q X; K 10 X X; and the opponents have the colossal gall (!) to bid: N-1S, S-2H. You pass to give them more rope, N-2S, S-3NT. **Double!** You soon wish you hadn't — here are the N-S hands:

| N | S |
|--------------|------------|
| A J 10 9 X X | X X |
| Q X | K J 10 X X |
| K X X | J X X X |
| X X | A Q J |

Declarer makes the contract with an overtrick.

Simon then suggests doubling 3NT when you know from the bidding that the opponents have just enough high cards for game, but that all the cards are lying wrong for them. Consider this hand from last week's game.

N-S vulnerable. (continued on page 4)

BERA CONCERT SERIES

The 1962-63 Concert Series will begin on October 23 with the performance of the Juilliard String Quartet. The program for the remainder of the season is as follows:

| | |
|-------------|---------------------------|
| December 5 | GARY TOWLEN, Pianist |
| February 26 | TRIO DI BOLZANO |
| March 20 | DUO DI ROMA |
| May 2 | NEW YORK CHAMBER SOLOISTS |

Series tickets will be available this week. A tentative list of ticket sellers is listed below.

| | |
|---|-----------------------------------|
| AGS - E. Courant | PHYSICS - P. Towey, S. Iwamoto |
| ADMINISTRATION - V. Sayre | REACTOR - J. Baldwin, B. Laskee |
| BIOLOGY - M. Wolfsberg, R. Marciello | REACTOR THEORY - N. Corngold |
| CHEMISTRY - M. Perlman, H. Schwarz | NUCLEAR ENGINEERING |
| CYCLOTRON - D. Alburger | 197 - G. Bergin, J. Stehn |
| EXPERIMENTAL REACTOR PHYSICS - E. Weinstock | 815 - J. Ridgeway |
| MEDICAL - E. Popenoe, R. Straub | HOT LAB - C. Auerbach, M. Hillman |
| PERSONNEL - M. Clasen | METALLURGY - E. Alacca |
| APPLIED MATH - Joel Pincus | |

Watch the posters on your bulletin boards for additional ticket sellers.

BERA FILM SERIES — BONUS NIGHT

GASLIGHT FOLLIES

THURSDAY — SEPTEMBER 27 — 8:30 P.M. — LECTURE HALL

Admission is free to all series ticket holders for this showing. Anyone who purchases a series ticket at the door this Thursday will also be admitted free of charge.

"Gaslight Follies" is a hilarious compilation of early silent films with narrative and music track added. The first section serves as an introduction to the "greats" of the silent era through excerpts from their films. Included are Rudolph Valentino, Mary Pickford, Marie Dressler, William S. Hart, Lon Chaney, Will Rogers, Douglas Fairbanks, Charles Chaplin, and many others. The second part consists of excerpts from early newsreels and includes such items as Edward Windsor being made the Prince of Wales, Jim Jeffries taking the boxing crown from Bob Fitzsimmons, and the 1905 Miss America Contest.

The third item is a film version of the grand old tear jerker "The Drunkard" as presented in Los Angeles for a number of years. It is a classic of the "hiss-the-villain, cheer-the-hero" type of story of the early 1900's. The final section is the complete 1912 version of "East Lynne," with Alan Hale and Madge Kirby, the epitome of exaggeration in acting.

In addition, a series of shorts starring the late Robert Benchley will be shown.

PAMPHLET AVAILABLE ON SELECTED READINGS ON ATOMIC ENERGY

A pamphlet, entitled "Selected Readings on Atomic Energy for High School Students" is available at the Information Office in Building 460. The pamphlet was compiled by Dennis Puleston, Tech-

nical and Public Information Officer at BNL.

The publications listed are grouped under the headings of General Nuclear Science, Nuclear Physics and Chemistry, Nuclear Biology and Medicine, Reactors and Nuclear Engineering, Social and Political Aspects, and Education and Careers. Price as well as a short description of the text is listed.

BRIDGE—cont'd.**N**

S. XX
H. A 10 9 8 XX
D. X
C. Q 10 9 X

W

S. XX
H. K Q J X
D. XX
C. A Q J X X

E

S. A J 10 X X
H. XX
D. A K X X
C. XX

S

S. K Q 9 X
H. X
D. A J 10 9 X X
C. XX

One South player doubled 3NT on the theory that the opponents had reached game with nothing to spare, and with the unbelievably bad suit breaks in store, nine tricks would be hard to come by. The diamond queen was opened and only seven tricks could be won by declarer. The N-S score of plus 300 won top-on-the-board.

The next game, a full master point, will be held this Thursday, September 27, at 7:45 p.m., in the Recreation Hall. Come on out — free coffee and cake this week.

BOWLING SHIRT SALE

Orders, accompanied by full payment, are now being taken for bowling shirts at the Recreation Office. The shirt selected is Royal Blue with BNL embroideries on the back as well as your team name. A sample shirt is on hand at the office. The low \$5.00 price is only available on a group purchase for a short period of time. A minimum number of orders is required. Orders will be taken through October 12.

CLASSIFIED ADS**FOR SALE**

1962 CHEVROLET - Impala. White with blue interior, V8, Radio, Heater, W/W. Six mos. old. Sacrifice. \$2,500, costs \$3,200 new. Anna Marie Czarnecki, Ext. 363.

1960 FIAT 600 - 2 dr. sedan, 40 mpg, r&h, W/W, extras. 35% insurance discount when registered as second car. Ideal for traveling back and forth to the Lab. \$495. R. Kerzner, Ext. 2411 or MO 5-5037.

1958 CHEVROLET - 2 dr. Bel Air hardtop, large V8, auto. trans., all power, very good cond. L. Adler, Ext. 2717.

1958 VW BUS - Rebuilt engine, less than 1500 mi. Excell. cond., fiber glass insulated, new tires. \$800. Ext. 622.

1957 FORD - Station wagon, 9 pass. R&h, W/W, snow tires. \$795. Good cond. Tom Fey, Ext. 2411 or MO 1-5283.

1962 CHEVROLET - Black, Std. 6, excell. cond. Has been superbly cared for. R&h, W/W. Freshly simonized. \$1850. Sandy Wagner, Ext. 618.

1961 FALCON - Auto. trans., r&h, and full undercoating. Like new. Asking \$1,595. JU 5-8322.

1956 OLDSMOBILE 88 - Trouble-free, 4 dr. sedan, auto. trans., grey & white. 4 good tires. Available end of October. M. Gailloud, Ext. 2505.

1956 FORD - 4 dr., r&h, new battery and tires. Price - \$100. AT 1-9467 after 6 p.m. or Ext. 2438.

1956 CHEVROLET - 2 door sedan, std. shift, very good cond. 3 new tires, \$450. Ext. 2539 or 706.

1956 CHEVROLET - 4 dr. Bel Air hardtop, V8, std. shift., excell. running cond. M. Roth, Ext. 488.

1955 FORD - Victoria Crown, V8, r&h, hardtop. Auto. trans., new generator, waterpump, brakes, in very good cond. Reasonable, Ext. 467 or AT 1-6825 after 6 p.m.

1955 BUICK - Super, 2 dr. hardtop. Auto. trans. Power steering and brakes, r&h, W/W. In perfect cond., has been extremely well cared for. Available end of October. D. Apers, Ext. 626 or 717.

1955 PLYMOUTH - 4 dr. sedan, auto., all tubeless & two spare tires, very good cond. \$275. Owner leaving country Sept. 30. Shigeta, Ext. 301 or 704.

1954 CHEVROLET - 2 dr. hardtop. R&h, auto. trans., good cond. \$100. G. Spatzier, Ext. 301.

1954 FORD - 2 dr. sedan, std. shift, good cond. \$230. A. Wytenbach, Ext. 625.

1953 DODGE - 6 cyl. station wagon. Std. shift, \$75. SE 2-8818 evenings or see Charley Porcaro at AGS.

2 SNOW TIRES - 670x15. Mounted. Used one season. Good cond. \$18. Casey. AT 9-1855.

21' MORGAN LUHRS SEA SKIFF - Powered by Chris Craft engine. Complete with cushions, anchor, lines ship-to-shore radio, full winter canvas covering, new navy top, and new nautolux covering on bow. Newly painted & varnished. Must be seen to be appreciated. \$2,300. GR 5-8268 after 6 p.m.

12' SKIMMER RUNABOUT - Inc. 12 hp Sea King, 6 gal. gas tank, motor stand, spare prop, canoe paddle, self-bailer, steering wheel, throttle, shift controls. \$195. Richard Kerzner, Ext. 2411 or MO 5-5037.

1956 DODGE CORONET - 51,000 miles, r&h, auto. trans., very good cond. L. Bertanza, Ext. 2505 or AT 1-6409.

GO-KART - Good cond. \$35. HR 3-3036 after 6:00 p.m.

21" TV - Motorola, table model. In very good cond. \$50. Ext. 706.

BOOTH - Pink leatherette with matching formica table. Ideal for recreation room or breakfast nook. \$15.00. Ext. 2586 or AT 9-1741.

AM-FM RADIO - G.E. Model T-210 (considered a "best buy" by Consumer Reports), almost new, \$40. Ext. 706.

2 WHEEL TRAILER - And hitch. Steel body, 4'x6'x12" deep. Spring loaded hand trip and dump body. W. Koontz, Ext. 657.

AUTO. CHANGER - Garrard RC 88 4 speed auto. changer w/sterio crystal, one yr. old, perfect. \$50. Sue, Ext. 442.

WANTED

BROWNIE UNIFORM - For a brand new Brownie. An out-grown uniform would be greatly appreciated. E. Alacca, Ext. 2192.

TRAVEL TRAILER - Self contained about 15'. R. Sollanek, Ext. 311 or LT 9-0348 after 6 p.m.

PIANO - Baby Grand, good condition and reasonable. Ext. 780.

PIANO - Upright, under \$150. Appearance unimportant. Jim Dwyer, Ext. 2560.

INFORMATION - Young couple looking for 30' to 45' boat to deliver to Florida this fall. We have experience having made this trip twice before and are willing to share expenses. Don David, Ext. 2676 or HR 3-9033.

PLANS - I'm looking for a set of plans for a DIN ice boat. Does anybody have a set or know where to get one? H. Houtsager, Ext. 2684 or 2677.

FOUND

BOWLING BALL - "High Kore Official" found between buildings 176 and 180. May be picked up at the Recreation Office.

FOR RENT

APARTMENT - 2 bedrooms. Very attractive, close to Lab., unfurnished. Jack, Ext. 2413 or YA 4-3324.

APARTMENT - 2½ rooms, nicely furnished in Bellport village. Private entrance, heat and light included in the price of \$85. per mo. Ext. 2497 or AT 6-8850.

HOUSE - Furnished in Miller Place, 4 rooms, 2 bedrooms, garage, rights to private beach. Lease to June, 1964. \$125/mo. Available Oct. 1. HR 3-0039 after 7:00 p.m.

CAR POOL

Driver wanted for car pool from East Patchogue. J. Tillinger, Ext. 2212.

Two drivers needed for car pool from West Islip. D. Stephani, Ext. 542 or A. Friedman, Ext. 2133.

Would like to join or form car pool from Babylon area. A. Tillis, Ext. 2677.

Carpool desires additional member from Wyandanch-Central Islip area. D. Engelberg, Ext. 2735.

Would like to join car pool from vicinity of Susan Lake Drive, Patchogue. M. Brooks, Ext. 2571 or GR 5-8406.

Two people would like to join or form a carpool from Sayville area. M. Keller, Ext. 2180.

Driver wishes to form or join carpool from vicinity of South Country Road, Brookhaven. William deVeer, Ext. 2229.

STAMPS - For Dr. H. Blum may now be mailed directly to his home - 1100 Grand Concourse, Bronx 56, New York.