

# *the* Bulletin Board

VOLUME 16, NUMBER 7

Published by the BNL Personnel Office

OCTOBER 23, 1962

## BACK TO STANDARD TIME

Eastern Standard Time will go into effect on Sunday, October 28. Be sure to set your clock back one hour before you go to bed on Saturday night, October 27.

## BERA DANCE

In keeping with our newly developed tradition of departments presenting (committeeing) our dances, and following in the footsteps of the Bubble Chamber, Supply and Materiel and the Medical Department:

### ELECTRONICS

is proud to present

#### "BERA'S NOVEMBER DANCE"

at the Gymnasium on Friday, November 9. Fun - Prizes - Surprises. Dancing from 9:00 p.m. to 2:00 a.m. to the twelve piece band of OPERATION GET-TOGETHER fame,

#### "THE STARLIGHTERS"

Admission - Employee and escort, \$1.50 each. Guests - \$2.00 each.

## VISITORS

An AEC Computer Information Meeting will be held at BNL on October 25 and 26.

## FOLK DANCING

There will be folk dancing every Monday evening from 8:00 p.m. to 11:00 p.m. at the Recreation Hall.

## DUPLICATE BRIDGE

A full master point game will be held this Thursday, October 25, at 7:45 p.m. in the Recreation Hall. Games end by 11:00 p.m. Coffee will be served.

## ART EXHIBIT OPENS NOV. 7

Our annual BERA Art Exhibit will open on Wednesday evening, November 7, at 8:00 p.m., at the Exhibit Hall.

The committee was extremely fortunate in acquiring an excellent collection of works by well known professional artists, through the courtesy of the Downtown Gallery of New York.

After opening night the exhibit schedule will be: November 8, 9, 12, 13, 14, 15, and 16 - 11:30 a.m. to 5:30 p.m. November 9 and 15 - open at 8:00 p.m.

## DRS. RABI AND TAPE ELECTED TO NEW POSTS IN A.U.I



I.I. RABI



G.F. TAPE

The Board of Trustees of Associated Universities, Inc. held its annual meeting at Green Bank, West Virginia, on October 19, 1962. At the meeting important changes were made in the top offices of the corporation.

Professor I.I. Rabi, who has served as President of Associated Universities, Inc. since April, 1961, was elected Chairman of the Board. He succeeds Dr. Ralph S. Halford of Columbia University. To succeed Dr. Rabi as President, the Board elected Dr. Gerald F. Tape. Dr. Tape has served as Vice President since January 18, 1962.

Dr. Rabi was one of the incorporating Trustees of Associated Universities, Inc. when it was founded in July, 1946, and has been a member of the Board ever since. In addition, he served on the Executive Committee of the Board continuously from 1946 until October, 1959, and again during his presidency. Dr. Rabi, who received the Nobel Prize in Physics in 1944, is Higgins Professor of Physics at Columbia University. Among the many positions he holds, is that of U.S. Member on the Science Committee, United Nations. He is also a member of the President's Science Advisory Committee and United States representative on the Science Committees of the International Atomic Energy Agency and the North Atlantic Treaty Organization.

Until his appointment as Vice President of Associated Universities, Inc., Dr. Tape was on the senior administrative staff of Brookhaven National Laboratory. He joined the Laboratory on July 1, 1950 as Assistant to the Director. In October, 1951, he was appointed Deputy Director. Before he came to Brookhaven, he was an Associate Professor of Physics at the University of Illinois. From 1942 to 1946, Dr. Tape served in the Radiation Laboratory of the Massachusetts Institute of Technology, where he was associated with

(please turn the page)

**DRS. RABI & TAPE—Cont'd**

the development of several airborne radar equipments, including radar relay systems. In 1944 and 1945 he was in charge of the Radiation Laboratory's airborne radar work in Europe, with headquarters in Malvern, England. These operations were primarily with the U.S. Eighth Air Force.

Other actions taken at the annual meeting include election of Dr. Ralph S. Halford as Vice Chairman of the Board, and re-election of the following officers: Mr. James S. Alexander, Treasurer; Mr. Lewis R. Burchill, Controller; Mr. Joseph F. Lord, Assistant Treasurer; Mr. Charles F. Dunbar, Secretary. Five new Trustees were also elected, namely: Dr. Allyn W. Kimball of Johns Hopkins University, Dr. Ernest F. Johnson of Princeton University, Dr. Ernest W. Caspari of University of Rochester, Dr. Vernon W. Hughes of Yale University, Dr. Thomas Gold of Cornell University.

**DAYLIGHT TIME A FRANKLIN IDEA**

Last April, millions of Americans set their clocks ahead one hour. They'll turn them back on October 28. What's this daylight saving time all about?

Credit our own Benjamin Franklin with the idea — though he was ridiculed for the brainstorm. Franklin first proposed it when he was U.S. Minister to France. The American genius, who knew a penny saved is a penny earned, figured that in the spring and summer time Parisians unnecessarily burned candles for 1.281 hours. But Paris laughed him down.

In 1907, the idea was revived by an Englishman, William Willett. His proposal was supported by the rising young statesman, Winston Churchill. Great Britain finally adopted fast time in World War I to conserve power and fuel. It is now a permanent fixture.

In this country, a Pittsburgh man, Robert Garland, also promoted the idea as a wartime measure, and Congress enacted daylight saving time in March, 1918. It lasted only two years.

The violent protests of farmers, who said their cows were giving milk an hour after the milk trains passed by, brought repeal of the law over President Wilson's veto. Daylight time did not return to the nation as a whole until World War II.

**UPTON RIFLE & PISTOL CLUB**

Roy Domish led the field in the large bore shoot held last Sunday on the BNL North Range. Roy shot a score of 343 out of a possible 400. Al Lukas was second with a 324 and Paul Hichborn was third with a 276.

Next Sunday's match will begin the last half of the Fall Tournament. With two matches down and two to go, the BNL riflemen will be out to better their previous scores. Based on previous tournament experience, the next two Sunday afternoons should produce some fine shooting.

*Arrivals and Departures***WELCOME TO BNL**

<b>AGS</b>		
John T. Keane	Ext. 2557	
Thomas A. Piekart	2410	
Thomas P. Sharkey	2504	
Frank Toldo	2410	
<b>CENTRAL SHOPS</b>		
Robert Luccioni	577	
<b>CHEMISTRY</b>		
Irwin Sponder		
<b>DIRECTOR'S OFFICE</b>		
Susan M. Boudreau	2371	
<b>FISCAL</b>		
Francis M. Enright	2695	
Viola D. Malloy	2342	
<b>MEDICAL</b>		
Patricia Lawless	301	
<b>NUCLEAR ENGINEERING</b>		
Henry A. Stratton	2406	
<b>PHOTOGRAPHY &amp; GRAPHIC ARTS</b>		
Alan R. Schmidtchen	2196	
<b>PLANT MAINTENANCE</b>		
Alfred Mohlmann	2389	
<b>PURCHASING</b>		
Jean M. Charest	2493	
<b>SUPPLY &amp; MATERIEL</b>		
Robert W. Spencer	2704	

**RECENT DEPARTURES**

<b>ARCHITECTURAL PLANNING</b>	
John M. Ruddy	

**NEXT BERA MOVIE****"A LESSON IN LOVE"**

**Next Week, November 1, 1962**

"A Lesson in Love" is one of Ingmar Bergman's purest comedies.

"A lustily ironic comedy of morals, with a bar room brawl that is probably the funniest thing of its kind since the confetti scene in Charlie Chaplin's 'City Lights'.....Time Magazine

**TO RETIRE OCTOBER 26**

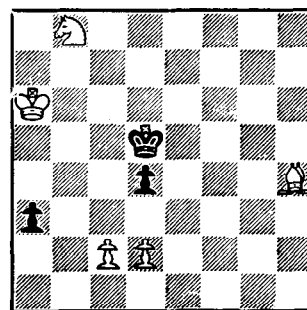
**ANSIL P. DIXON**

On October 26, Mr. Ansil P. Dixon, of the Fiscal Division, will terminate his employment here to retire. Mr. Dixon, a senior BNL employee, has been employed since September 1947.

On behalf of all BNL employees, THE BULLETIN BOARD wishes him good luck and happiness in the years to come.

**CHESS PROBLEM**

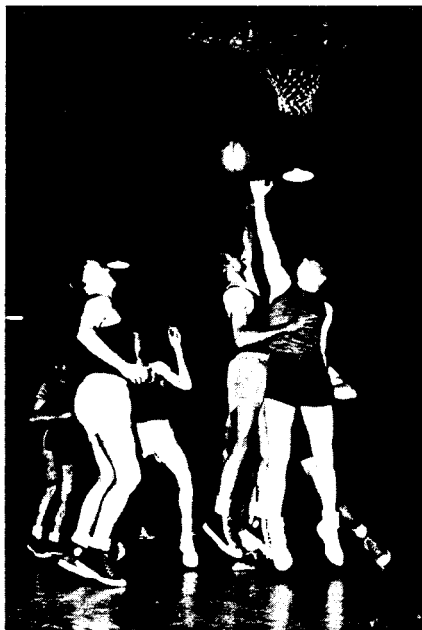
This week's problem is an end game study. It is White's move, and it seems almost impossible for White to prevent Black's R:P to Queen. Answer elsewhere in this week's BULLETIN BOARD.

**BOWLING SHIRTS**

Orders are still being accepted for our royal blue bowling shirts with "BNL" and your team name on the back **and your first name on the front pocket** for our group discount price of \$5.00 each. See G. Sabine at the Recreation Office.

**Team or individual** orders will be accepted for any number of teammates desiring shirts from one on up!

## BASKETBALL LEAGUE



Entries are now being accepted for our BNL Slo-Break Basketball League. All it takes to form a team, is a group of eight or ten players who would like to play. Games will be scheduled on Tuesday evenings at 6:15 p.m., 7:25 p.m. and 8:30 p.m. (Day and times will be dependent on number of teams entering.) The entry fee, based on a six team league, has been set at \$28.00 per team. Each team will be required to have team shirts with a six inch number.

Entries will be accepted until November 2. November 13 has been scheduled as a general practice, and it is planned to start the season on November 20.

If your department isn't going to field a team, but you would like to play, call George Sabine on Ext. 391. Your name will be placed in the player's pool and given to a team in need of additional help.

As always the Captains will review the rosters of all entering and established teams in an effort to balance the competition.

The next Captain's meeting has been set for Wednesday, October 24, at noon, in the Recreation Office. The rules will be reviewed, and officers will be elected.

## SKI CLUB

The first meeting of the BNL Ski Club will be held on Monday, October 29, at 8:00 p.m. in the Recreation Hall. A film entitled "Ski New Horizons" will be shown. Anyone who is interested in skiing with the club this season is invited.

## COME ONE — — — — COME ALL BOWLING TOURNAMENT TIME AGAIN

Another BNL Open Bowling Bout is scheduled for 3:00 p.m., Saturday, November 10, at the Port Jeff Bowl. All new bowlers are welcome; bring your wives, girlfriends, husbands, boyfriends — mother-in-laws too! Make it a day to remember. Hurry with your entries — only 64 teams can be accommodated. You don't have to be a league bowler to enter our Mixed Doubles Tournament.

Here are the rules:

1. A team shall consist of two bowlers, one male and one female. At least one member of each team must be a BNL employee (per BERA definition).
2. The tournament shall consist of three games per bowler, bowled across six lanes.
3. Handicap (per bowler per game) shall be arrived at by using the standard BNL bowling rule which is 80% of the difference between the bowler's average and 200.
  - a. Bowlers in BNL leagues last season use final BNL average.
  - b. Bowlers in BNL leagues this season, but who didn't bowl in BNL leagues last year, use BNL average as of 10/12/62. Bowler must have bowled all twelve games to use this average.
  - c. Bowlers not in BNL leagues this season or last, but who bowled in other leagues last season, use highest final league average of last year. Summer league averages will not be accepted.
  - d. All others use score of first game for first game average; use scores of first two games divided by 2 for second game average; use scores of first three games divided by 3 for third game average.
  - e. Maximum handicap allowed per game for men is 70 pins; and there is no maximum handicap for ladies.
4. Prizes will be based on scores plus handicaps and awards given as follows:
 

**1st Place Team** — Two trophies and certificates for two custom fitted bowling balls. (Team High Gross Series.)

**2nd Place Team** — Two trophies.

**3rd Place Team** — Two trophies.

**Ladies' Individual High Gross Game** — One trophy.

**Men's Individual High Gross Game** — One trophy.

The above prizes are guaranteed for the minimum number of tournament entries (30). Additional prizes will be awarded based upon the number of team entries in excess of 30, e.g., 4th and 5th place teams, 2nd place ladies' and men's individual games. No ABC or WIBC prizes!
5. Team entry fee, including the cost of bowling, is \$5.00. Entry blank and fee must be presented at the Recreation Office not later than 3:00 p.m. on Friday, November 2. No entries will be accepted after the first 64 have been received. The fee is non-refundable; only in the event that the minimum number of team entries (30) is not reached will the fee be refunded and the tournament called off. Teams not present and ready to bowl at the start of the tournament will forfeit the team fee.
6. The rules of the American Bowling Congress are adopted for this Tournament except as otherwise stated herein.
7. Decisions of the Tournament Committee (G. Sabine, E. Egler, G. Fales, and B. Bishop) will be final.
8. Matchmaker Service: B. Bishop, Ext. 2255 or G. Fales, Ext. 2164.

Submit to  
Recreation Office

## ENTRY APPLICATION

Must be accompanied by  
\$5.00 non-refundable fee

1. Lady Bowler (name) ..... BNL Employee (yes) (no)

\*Average is ..... in ..... League at ..... Lanes.

2. Man Bowler (name) ..... BNL Employee (yes) (no)

\*Average is ..... in ..... League at ..... Lanes.

Received Recreation Office .....

\*See Rule 3 above to determine average.

**MONDAY AT THE GREEN LEAGUE**

BY JERRY AUSTIN

Listen, my children, and you shall know  
Of the night that Reams made nine in a row,  
There's hardly a man who's now alive  
Who ever has gotten more than five,  
But on such a wondrous night at this  
It seemed that Walt just could not miss.

He rolled his first strike with no trouble  
And, just as easy, made it double,  
And then he went off on a spree  
The next ball made a nice big three,  
Then four and five he threw, and got 'em  
As if those pins all had round bottoms.

Then as the others stood transfixed,  
Why, Walt came up with number six,  
And he was on his way to Heaven  
The next ball hit and made it seven.  
By careful aim and sure design  
He tallied up strikes eight and nine.

The word buzzed 'round the lanes just the  
The next time up would make it ten,  
Would one of Our's be called to Fame  
By rolling off a perfect game?  
Four dozen pairs of eyes await  
Developments on Alley Eight.

The Great Man to the bar withdrew  
And slowly downed another brew  
Surprised, he was, as he observed  
A brand new set of jangling nerves,  
But then he kept his date with Fame  
Returned to finish off the game.

Without a nod or sidelong glance  
He toed his mark and took his stance,  
Careful! - lines up on the dots,  
Plotted out the pay-off shot,  
A hundred eyes all stared enthralled  
As Reams wound up and threw that ball!

The first mark passed without a hitch,  
The ball hooked toward the one-three niche,  
And then that ball, the dirty pup,  
Began to roll a bit high up!  
And when the crash of wood had quit  
Why, Walt had left a five-ten split!

The rafters shook with anguished groans,  
Our Hero, at the line alone,  
Was not just then inclined to Bless  
The Fate that left that five-ten mess!  
Nor did he feel a bit averse  
To shouting out a mighty curse!

So here's to Fame, you shameless Dame,  
So misbegotten and misnamed,  
You're just not worth it all, at all  
When you ride on a twisting ball!  
Those balls and pins - why, you can take it -  
But maybe next week I will make it.

**CLASSIFIED ADS****FOR SALE**

MG-TD - \$700, Ext. 454.

1956 FORD V8 - \$200. Jeff, Ext. 2468.

1956 MERCURY MONTCLAIR - Yellow convertible, auto. trans., p.s. & p.b., good mech. Also: 160 feet fencing and stakes. Electrical connections for clothes dryer. Olness, Ext. 627 or AT 6-0414.

1959 SIMCA - 4 dr. sedan, beautiful, r&h, only \$395. Ext. 423.

1956 PORSCHE COUPE - Very good cond., best offer takes it. E. Wagner, GR 5-8426 after 6:00 p.m.

1958 CADILLAC SEDAN - Deville, air conditioned, full power, new tires, good condition. \$1800. A. Beckwith, WA 9-4949, after 6:00 p.m.

1957 FORD STATION WAGON - 2 dr., 6 cyl., overdrive, r&h, brown and white, good cond. \$395. Bob Doering, Ext. 778.

1956 FORD - Black & white, 2 dr., r&h, has had loving care. Best offer near \$550. AT 1-8529 anytime.

1961 FALCON DELUXE - Auto., r&h, excell. full undercoating. \$1,495. JU 5-8322.

HOUSE - Bellport, 2 bedrooms, cement block stucco, furnished. Large util. fireplace, radiant heating, built-in TV and music center. Within village. Great South Bay view. AT 6-0348.

RUNABOUT - 1958 moulded mahogany, 1959 Evinrude motor, 35 hp. 1961 Tee-Nee tilt bed trailer. Completely equipped and in excellent cond. All extras. \$500. Ext. 2316.

JERSEY SHELTERED SKIFF - 25 ft. long x 10 ft. beam, "Paradise" built, lapstrake, copper riveted. 135 hp Palmer, 49 Watt s/s, depth finder, swordfish pulpit head, 12½ lb. Danforth anchor, all ¾ nylon lines, compass. 5 yrs. old, in water at Montauk. Good sea boat. Best offer over \$2500. John, Ext. 2376.

RUNABOUT - 14 ft. fiberglass bottom, mastercraft trailer with winch and a 15 hp. Evinrude outboard motor plus cruise-a-day tank, anchor, line and cushions. Fall special. \$299.99. Ext. 391 or JU 8-5586.

2 SNOW TIRES - 6.00x16, with tubes and rims, already mounted, like new, both for \$15. Also, 1 child's scooter, 2 wheels, like new, \$4. Lots of fun for children to 7 yrs old. Please call, AT 1-9638.

BICYCLE - Boys 20 in., like new. Very good buy for \$15. Please call AT 1-9638.

PORTABLE RADIO - Zenith, 6 trans., batteries, earphone & case inc. \$16. Argus C3 35mm camera, case and flashgun with batteries, \$15. I. Meyer, Ext. 2222.

BRUNING DRAFTING MACHINE - With extra scales. Make an offer. John Gries, Ext. 2249.

MAYTAG WASHING MACHINE - Ringer type, round tub, good cond. Ext. 2382 or AT 4-0227. \$25.

RIFLE - Savage model 99, 30 caliber w/6x Wever scope, case, sling box, ammo. \$115. E.J. Miller, Ext. 2382.

J. AMER. CHEM. SOC. - Back numbers 1950 - 1960, will exchange for back numbers of J. Phys. Chem. or J. Chem. Phys. A. Tench, Ext. 614.

TOURING EQUIPMENT - 1 propane burner & refill, 1 ice chest, 1 2½ gal. gas tank, 1 hurricane paraffin lamp, plastic paraffin container, cooking utensils. \$12.50 the lot, or separately. Anne, Ext. 2351.

KITCHEN EQUIPMENT - Including set of 18 small and large glasses, pyrex casseroles, pyrex measuring jug, glass dishes and cooking utensils. Ann, Ext. 2351.

TRICYCLE - Large, good cond. \$10. Ext. 535.

TREES - White pine, hemlock, yews, wholesale prices. Ext. 597 or AT 6-0436.

WEDDING GOWN - Hand made, size 14, satin, embroidered lace, tulle, net, hand beaded with pearls and crystals, new. Also: headpiece. Will sell for cost of material. GR 5-2829 after 6:00 p.m.

**FOR RENT**

HOUSE - 6½ rooms, \$85. mo., must maintain and furnish own utilities. Mastic, 10 min. from Lab. SE 2-4147.

**WANTED**

SPACE HEATER - 40,000 B.T.U. Dvorak, Ext. 618.

HOME - For puppies, 2 males, one black, one tan. Sven Wichman, Ext. 440.

FRENCH CONVERSATION LESSONS - For Intermediate. Bob Hulliger, Ext. 2485.

PROPELLERS - From 35 hp. Johnson or Evinrude outboard, 10¼ dia x 13 in. pitch. R. Meyer, Ext. 481 or LT 9-5757.

DESK & CHAIR - Large, wood, fair cond. R. Meyer, Ext. 481 or LT 9-5757.

PLAYPEN - S. Kalbitzer, Ext. 2640.

LOT - ¼ to 1 acre, with or without cottage, within 20 miles west of the Lab. Hal Costorf, Ext. 2314 or JU 1-1590 after 6:00 p.m.

1955 or 1956 CHEVROLET - In good cond. Auto. or std. trans. M. Wyer, SH 4-5061.

SNOW PLOW - In good cond., with all hardware to mount on Willy's Universal Jeep, elec. lift preferred. Gil Spira, Ext. 2522.

VACUUM CLEANER - Electrolux, any cond. Ralph, Ext. 2543.

**CARPPOOLS**

Desire punctual member for four man, one stop carpool in the vicinity of Hicksville and Huntington. Ken, Ext. 2229.

Would like to join carpool originating from a point as close to New York as possible. Irwin Sponder, Ext. 610.

Desire fourth person as a rider-driver for existing carpool from the Suassa Park area of Port Jefferson. Esther Semm, Ext. 2294.

Rider would like to join carpool from Montauk Highway & Bayport Ave., Bayport. Karin Hansen, Ext. 2438.

**SOLUTION TO CHESS PROBLEM**

Decoying the Black King from the protection of the other Pawn is the first move.

**WHITE****BLACK**

1. N-B6

1. K x N

2. B-B6

2. K-Q4

(Not to B4 because a B check on K7 would loose the Pawn)

3. P-Q3

3. P-R7

4. P-B4 Check

4. K-B4

5. K-N7 and now

5. P-R8 (Q) would

Black is helpless lead to because

6. B-K7 Mate.