

the Bulletin Board

VOLUME 16, NUMBER 8

Published by the BNL Personnel Office

October 30, 1962

ART EXHIBIT

The fourth Brookhaven Annual Art Exhibit, sponsored by BERA, will open Wednesday evening, November 7, at 8:00 p.m., at the Exhibit Hall. A cordial invitation is extended to all.

The Exhibit this year will comprise twenty paintings by twelve artists, among whom are some of the best-known American painters. Arthur Dove, Max Weber and John Marin are among the founders of contemporary art; they were included in the famous Armory Show of 1913 which marked the beginning of modern painting in the United States. Georgia O'Keeffe is known for her pure and classical abstractions. Ben Shahn is an outstanding painter and illustrator and is also well known for his wartime posters. Robert Osborn is a popular cartoonist and also is a fine painter. Jasuo Kuniyoshi, Bernard Karfiol and Abraham Rattner, three young painters, complete the list. For contrast, there will be three pieces of nineteenth century American sculpture. This exhibit is on loan from the Downtown Gallery in New York.

EVENING SCHEDULE

(BEGINNING AT 8:00 P.M.)

Wednesday (Opening)	Nov. 7
Friday	Nov. 9
Thursday	Nov. 15

DAYTIME SCHEDULE

(11:30 A.M. TO 5:30 P.M.)

Thursday	Nov. 8
Friday	Nov. 9
Monday	Nov. 12
Tuesday	Nov. 13
Wednesday	Nov. 14
Thursday	Nov. 15
Friday	Nov. 16

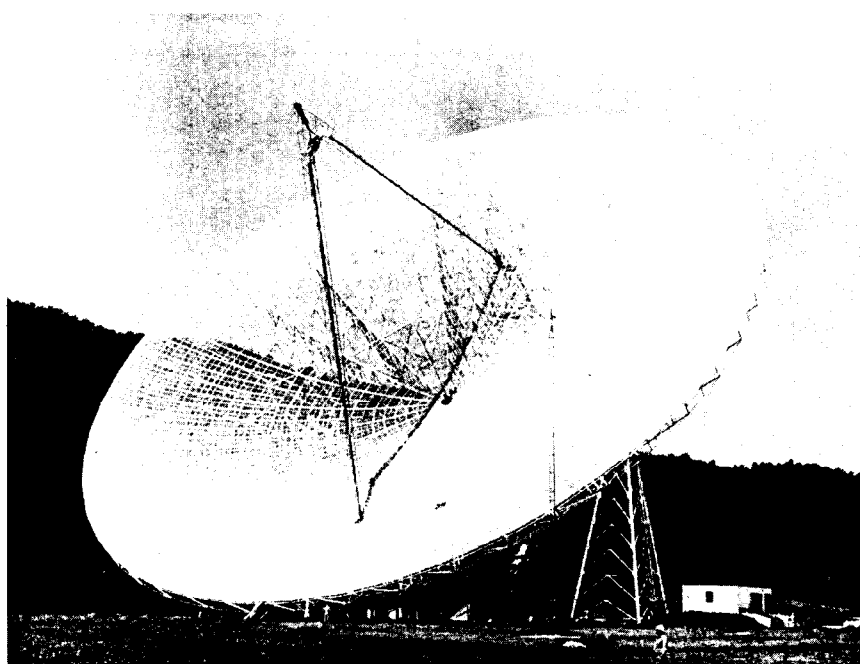
VISITORS' DAYS A SUCCESS

The three annual Visitors' Days were again an unqualified success. The visitors enjoyed the facilities and exhibits and many of them expressed their appreciation for the friendliness and courtesy of the BNL hosts. The number of visitors was 8166 on October 20, 1622 on October 26, and 4371 on October 27. We want to thank all those employees who helped so ably in this important undertaking.

CLARKE WILLIAMS, ACTING DIRECTOR

NRAO'S 300-FOOT RADIO TELESCOPE NOW IN OPERATION

On October 26 the world's largest movable radio telescope was shown to the public for the first time at an open house at the National Radio Astronomy Observatory, Green Bank, West Virginia. NRAO is BNL's sister laboratory, being operated by Associated Universities, Inc. under a contract with the National Science Foundation.



The huge telescope has an antenna with a diameter of 300 feet. The electronic feed, supported by long spars extending outward from the dish-shaped antenna, is 225 feet from the ground when the telescope is pointed at the zenith. The total weight of the telescope is 600 tons. It required only 17 months to construct, and the cost was \$850,000 exclusive of the electronic equipment.

Test observations, begun on September 20, were so successful a full program of radio astronomy research was started on September 27. The parabolic reflector of the instrument can be moved in a north-south direction only. The observing procedure is to point it at the area to be studied, and to let the earth's rotation carry the radio source through the telescope's beam. During the short period when the source is in the beam, the data is automatically recorded on paper charts, printed out, and punched at high speed onto tapes for subsequent analysis in a digital computer.

The Green Bank astronomers have begun a variety of studies utilizing the new 300-foot telescope. Plans have also been made for visiting astronomers from other institutions to bring their problems and equipment to the instrument. Among the first objects to be studied are the planets Jupiter and

(continued on next page)

COMEDY COSTUME BALL

What to wear? A costume of course, if you have one. If not, all is not lost, wear the curtains with a mask. If that doesn't fit, wear the window. We don't care what you wear; we just want you there.

This ball will be held on November 9, at the Gym, from 9:00 p.m. until 2:00 a.m. Remember the date, it's coming up fast.

The electronics group on BERA's behalf has been very busy preparing for this gala event, and certainly it could not be considered a success without a huge turnout. This huge turnout includes you. You are invited as of now — bring a guest. All are welcome.

The dance music is the finest; the fabulous Starlighters, a twelve piece orchestra designed exclusively for your dancing pleasure. We have spared no expense in hiring this band for the evening, so give your better half a full evening of entertainment by attending this carnival of laughs. As we mentioned earlier, a costume can be prefabbed in a matter of minutes, or much time and effort can be spent. Start planning today so you won't be left out next Friday.

Watch next week's BULLETIN BOARD for final details.

RADIO TELESCOPE—Cont'd.

Venus. Jupiter in particular has posed some interesting astronomical questions, in that it appears to emit radio waves that are the result of three perhaps distinct mechanisms at work on the planet:

First, there is an effect like a giant thunderstorm, which periodically emits bursts of radio waves into space. These bursts are easily detectable on earth, but only within a narrow band of wave-lengths near 30 meters. Second, Jupiter emits radio waves in the form of thermal radiation, although, relative to the earth's temperature, it is a very cold planet. Finally, it also emits radio waves that are believed to originate in belts of ionized particles trapped high in Jupiter's atmosphere, similar to our Van Allen belts.

The 300-foot telescope is being used to observe every transit of Jupiter; these measurements over such a large range of frequencies will help to determine the relative amounts of the planet's radiation from the thermal mechanism and the trapped particle belts. This will lead to a clearer knowledge of Jupiter's magnetic system and radiation belts.

If other planets, such as Uranus and Neptune, possess radiation belts these might prove to be observable with the 300-foot telescope. At the very important hydrogen line frequency of 1420 megacycles per second, the telescope will be exceptionally useful in detailed studies of the hydrogen gas in our own galaxy, the Milky Way. This should lead to a better understanding of the dynamics of the galaxy, and of the spiral arms emanating from the galactic center.

Studies of the distribution of neutral hydrogen in other nearby galaxies, such as the Andromeda, may also help clarify the internal motions of galaxies.

In addition to the neutral hydrogen clouds there also exists many large clouds of ionized hydrogen. Usually near hot bright stars, these regions emit radio waves over a wide range of frequencies. The 300-foot telescope has already been turned toward some of these regions. Also, the remnants of the catastrophic explosions that turn ordinary stars into supernovae are strong radio sources. The study of these is being continued with NRAO's new radio telescope.

VISITORS

The Chemonuclear Reactors Workshop will meet at BNL from October 29 to November 2.

**MIXED DOUBLES TOURNEY DEADLINE
FRIDAY, NOVEMBER 2, 2:00 P.M.
INFO — ENTRIES AT RECREATION OFFICE
— DON'T MISS OUT! —**

CIVIL DEFENSE EXHIBIT

IN CAFETERIA

On Thursday, November 1, the Suffolk County Civil Defense Office will display shelter supplies required in a typical home shelter. A Civil Defense representative will be in the Cafeteria to answer questions.

MOTOR VEHICLE SALE

Eighteen motor vehicles, located at the Security Parking Lot, will be available for public sale soon.

Inspection will be permitted on November 8 through 15, between the hours of 9:00 a.m. and 4:00 p.m. The bid opening will be held on November 16, at 10:30 a.m.

This sale will be a spot bid sale conducted by the General Services Administration. For further information, call Ext. 2509.

Arrivals and Departures

WELCOME TO BNL

AGS	
Rodger A. Hubbard	Ext. 406
Henry Petruele	2504
CENTRAL SHOPS	
Richard M. Cloke	566
CHEMISTRY	
Werner H. Baur	679
Lars Ostman	733 & 613
Richard Timmons	2241
NUCLEAR ENGINEERING	
M. Chandrasekharraiah	2527
Chia-Jung Hsu	2737
Stephen J. Wachtel	
PHYSICS	
Jacob Haufman	406
Jacquelyn Gannon	2438
Issachar Unna	2650
PLANT MAINTENANCE	
Walter A. Ashfield	
John Bullard	2120
Thomas J. Dorfer	2120
Nicholas F. Pisco	565
COSMOTRON	
Andre Wrzesniowski	

RECENT DEPARTURES

AGS	
Theodore Moleff	
CHEMISTRY	
Lung-Wen Chiao	

FRANK BEDNARCZUK, who has been employed in the Plant Maintenance Division since 1947, passed away on Friday, October 26, 1962.

OPERA SCHEDULE

We are now taking orders for the following performances:

November

- 14 ERNANI
- 15 FLEDERMAUS
- 16 BUTTERFLY
- 17 CHENIER (MAT.)
NONE (EVE.)
- 19 ROSEN KAVALIER
- 20 AIDA
- 21 CHENIER
- 22 ERNANI
- 23 DON GIOVANNI
- 24 AIDA (MAT.)
ROSEN KAVALIER (EVE.)
- 25 BARBER OF SEVILLE
- 26 ERNANI
- 27 ROSEN KAVALIER
- 28 BARBER OF SEVILLE
- 29 MEISTERSINGER
- 30 PELLEAS

BERA FILM SERIES

"A LESSON IN LOVE" (INGMAR BERGMAN)

Thursday, Nov. 1, 8:30 p.m., Lecture Hall

"A Lesson in Love" is one of Bergman's purest comedies, with a dazzling portrayal of homely, awkward adolescence by Harriet Anderson. The story: Eve Dahlbeck had once been engaged to marry a fellow artist, Ake Gronberg, rather a dreadful chap. After a hilarious scene at the wedding lunch Eve decided to marry Gunnar Bjornstrand instead. Now, many years later, their marriage has sailed into the middle-aged doldrums and Bjornstrand, a doctor, has begun merry philanderings with various female patients. His wife, a spirited sort, determines to take some action of her own, which stops the jolly doctor in his tracks. Their independent efforts to win each other back collide in Copenhagen, with a finish that is true slapstick.

SWIM CLASS

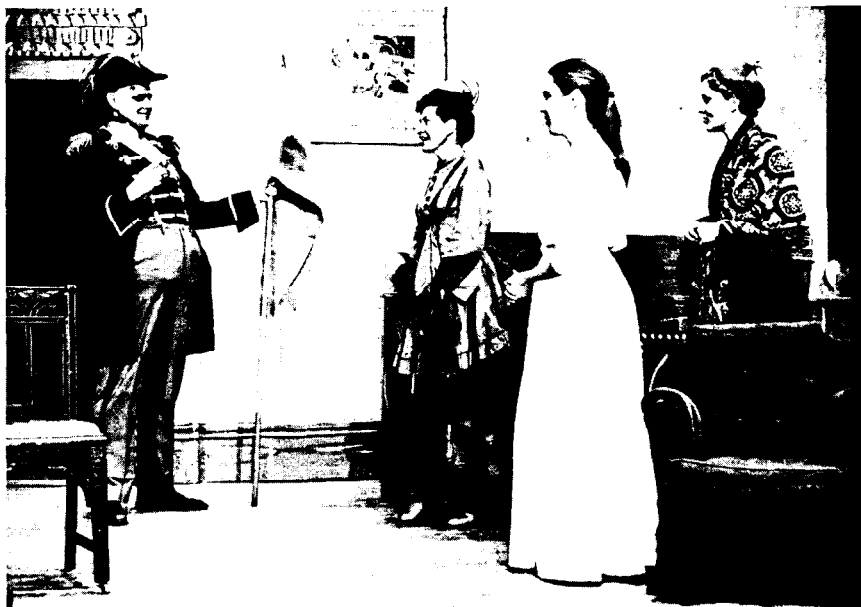
Registration will be accepted until the end of this week for our adult and children's swimming classes.

Children's Class — This class will definitely begin on Friday, November 9, at 6:30 p.m.

Adult Class — We still need additional registrants in order to begin the class as planned on Wednesday, November 7, at 5 p.m.

Both courses consist of one hour lessons, once a week for a seven week period. Registration fee is \$4.00. For information call the Recreation Office, Ext. 391.

DO YOU WANT TO BE AN ACTOR?



Scene from "The Matchmaker" in February 1960.

In 1947, with a production of that old suspense thriller "Seven Keys to Baldpate," the Theatre Group was launched. Since then almost every year the BNL family has been treated to one or more productions by this somewhat motley, somewhat distinguished organization of amateur thespians. The program credits read like a random sampling of the BNL phone book. Any production involves members of almost every department on site and every employment category. But what causes this varied and ever-changing group of people to band together, work like slaves for several months, and finally trod the boards of the Brookhaven Theatre — wearing an inch of grease paint and someone else's clothes — and do and say things that they would never dream of in real life?

Whatever the cause, the effect is very evident. The Theatre Group is, outside of sports activities, easily the most active group in BERA. By this we mean it involves more of the time of more people, for a production involves more than just the cast and the director. There are sets to be designed and built, lights to be arranged and worked, sound effects, props and costumes to be assembled, publicity material and programs to be printed and distributed, tickets to be sold, make-up put on, actors dressed, cues followed, and the back stage plumbing to be guarded during the acts. This nightmare is presided over by the producer and stage manager.

There is always lots of work for the willing. Therefore, newcomers are not merely welcomed, they are sought after. They will not necessarily be stuck with painting sets or some other menial task; in the past some of the juiciest roles have gone to new faces. Just come to tryouts and show what you can do.

In addition to the one or two major productions a year to which tickets are sold, there are prepared readings of plays given at regular business meetings. (Yes, we have those too.) At other times we meet at members' homes to sightread plays, or organize theatre parties. There is even an annual picnic at Westhampton Beach in the summer.

If you love theatre or just wearing grease paint, if you have a little ham in your character which you would like to give vent to from time to time, or if you enjoy working with congenial people on a project for the love of it, you belong in the Theatre Group. **ON STAGE.**

Casting Call:

Tryouts begin Monday and Tuesday evening, Nov. 5 and 6, at 8:00 p.m. in the Brookhaven Theatre, for a production of "Visit to a Small Planet." Among the characters needed are an army general, a television commentator, an astral visitor and a cat with stage experience. If you wish to look over a script ahead of time, call the director, Ginnie Sayre, Ext. 2345.

UPTON RIFLE—PISTOL CLUB

The ballots for the annual election of officers of the Upton Rifle—Pistol Club will be counted at this week's meeting on Thursday, November 1, at 8:00 p.m. in the Recreation Building. Also, the proposed new By Laws for the club will be discussed and a vote will be taken.

BASKETBALL LEAGUE

Entries plus the entry fee are due this Friday. A Captain's meeting will be held at noon, November 2, in the Recreation Office to review the rules and rosters.

At a meeting last week, George Latham was re-elected Chairman and Les Lawrence re-elected Secretary-Treasurer of the league.

If your department isn't going to field a team, but you would like to play, call George Sabine on Ext. 391. Your name will be placed in the player's pool and given to a team in need of additional help.

DISCOUNT COUPONS

New discount coupons are now available at the Recreation Office, 3 Center Street.

Coupons for "I Can Get It For You Wholesale" are good through November 11.

Coupons for "Sound of Music" are good through November 16.

GYMNASIUM

The Gymnasium is at the present time closed but will open shortly - November 13 - for physical activities. Watch the BULLETIN BOARD for the schedules.

CLASSIFIED ADS

FOR SALE

1956 FORD - Black & white, 2 dr., r&h, has had loving care. Best offer near \$550. Will be available about Nov. 1. AT 1-8529 anytime.
1959 RENAULT - Dauphine, good condition. R&h. \$375. Bob, Ext. 2255.

1955 DODGE - 6 cyl., 4 dr., std. shift, r&h. Good tires. Good condition. \$335. Available Nov. 21. A. Tench, Ext. 614.

1954 CHEV. CORVETTE - Runs well. Best offer over \$425. SH 4-2214 after 5:30 p.m.

1953 PONTIAC - 2 dr. sedan, std. shift, r&h, 54,000 mi., good cond. E.M. Franz, Ext. 650.

1955 STUDEBAKER - Champion, 2 dr. sedan, std. 6, blue. Very good cond. Owner leaving country end of Oct. \$150. Fujita, Ext. 366.

1958 LINCOLN CAPRI - 4 dr. hardtop, power steering, power brakes, radio, heater and automatic trans. Exell. cond. \$1250. Dotty. Ext. 2458 or GRover 5-3156.

RANCH HOUSE - East Patchogue, 6 rooms, 2 car garage, basement, enclosed patio. GR 5-3160. After 6 p.m. call GR 5-1324.

HOUSE - 7 rm., split level in beautiful North Shore community with private beach. SH 4-9877 evenings.

STORM WINDOWS - 7 ea., 32x51; 2 ea. 24x51; 1 ea. 24x39. Combination Storm Doors - 1 ea. 32x80; 1 ea. 30x80. Ext. 549.

KNITTING MACHINE - Knit-o-mat, 160 needle, single bed, row counter and tension control. Direction booklet and accessories. Cost \$80., will sell for \$45. R. Sollanek, Ext. 311 or LT 9-5469.

COMPLETE SET OF DRUMS - A good buy for a young beginner. All accessories included, \$50. takes all. F. Humphry, Ext. 451.

WESTINGHOUSE REFRIGERATOR - 6 cu. ft. Good cond. \$25. E.A. MacDougal, Ext. 2315 or AT 6-1221.

BRUNING DRAFTING MACHINE - With extra scales. Make an offer. John Gries, Ext. 2249.

SMITH & WESSON MODEL 41 - .22 cal. target pistol with extra barrel and clip in original box. Excell. cond. \$105. IVER JOHNSON - .22 cal. target pistol with holster. \$25. Jack Rothman, Ext. 2672.

22 CAL. RIFLE - pump action. Very good cond. \$20. Dick Richardson. Ext. 2212.

TARGET RIFLE - Remington Model 513T Matchmaster, 22LR, with red field sights. \$55. Robert H. McKenna, Ext. 2255.

CHILD CARE - Best of care for children in happy home while mother works. Playmates, playroom, yard, energetic young mother. Patchogue area. AT 9-0425.

WOMEN'S ROLLER SKATES - Hyde, white size 6, excell. cond. Complete with pompoms and toe stops. Cost \$18. new, asking \$10. Duke, Ext. 2698 or GR 5-3175.

RADIO-RECORD PLAYER - Philco combination, one record at a time. Blue tulle evening gown, matching stole, size 10-12. \$10. Black velvet evening dress, size 9, suitable for high school girl, \$10. RCA 45 speed record player, almost new. \$20. Wooden framed screens and storm sashes, 3 sizes, reasonable. Boosey and Hawkes clarinet, good cond. A. Olsen, AT 6-0376.

WANTED

HALLICRAFTER RECEIVER - 3-20R or S-40. Any condition. Will consider any other make of this type. B. Howard, Ext. 2314.

SPANISH LESSONS - Reasonably priced for group of on site adults. More members are acceptable to the group. Mary Phillips, Ext. 729.

HIGH CHAIR - Or low chair-table for baby. G. Dulz, Ext. 613 or WA 9-4300.

LOST - FOUND

LOST - Prescription safety glasses lost between Central Shops and Cafeteria. James Salvato, Ext. 573.

FOUND - Eyeglasses, outside Personnel Office. Womens pink. Personnel Services, Ext. 2107.

FOUND - Ring, in vicinity of Administration Bldg. Personnel Services, Ext. 2107.

FOR RENT

FURNISHED APARTMENT - 3 rms, in Mastic. Newly decorated and furnished. \$90/mo., incl. utilities. AT 1-7666.

RANCH HOUSE - East Patchogue. Rent \$125. 6 rooms, 2 car garage, basement, enclosed patio. GR 5-3160. After 6 p.m. call GR 5-1324.

HOUSE - 4 rooms, furnished, 10 min. from Lab. \$80/mo. Ext. 424.

HOUSE - Patchogue village, prime location, 2 bedrooms, Cape Cod, excell. value, lease. SE 2-3839.

CARPOOLS

Driver would like to join carpool from East Islip area. Hal Costorf, Ext. 2314 or JU 1-1590.

Driver would like to join or form carpool in the vicinity of Floyd Bennett Store & 112 N. Patchogue. Ext. 567.

Driver wanted for existing carpool originating in Deer Park area. Don, Ext. 2558.