

# the Bulletin Board

VOLUME 16, NUMBER 9

Published by the BNL Personnel Office

NOVEMBER 6, 1962

## TWENTY-FIRST BROOKHAVEN LECTURE

by R.C. ANDERSON - Director's Office

Title:

"LANDSCAPING THE GROVES OF ACADEME"

**Lecture Hall - 8:00 p.m. - Wed., Nov. 14**

A buffet supper (\$2.75) will be served at the Brookhaven Center before the lecture, beginning at 6:00 p.m. Reservations should be made at least one day in advance by calling Ext. 2302 before 5:00 p.m., or Ext. 2453 in the evenings.

Refreshments will be available in the Research Staff Lobby following the lecture.

## NUCLEAR FALLOUT RADIATION MEASURING KIT

Some time ago Personnel Services obtained Bendix Radiation Measuring Kits at the price of \$18.75 for BNL employees.

If enough interest is shown, we will again try to make them available. If you are **definitely** interested, please call Personnel Services, Ext. 2106.

## SOFT ICE CREAM MACHINE INSTALLED IN CAFETERIA

Soft ice cream is now available at the Snack Bar in the Cafeteria throughout the day.

## NEXT BERA MOVIE

**Next Week, November 15**

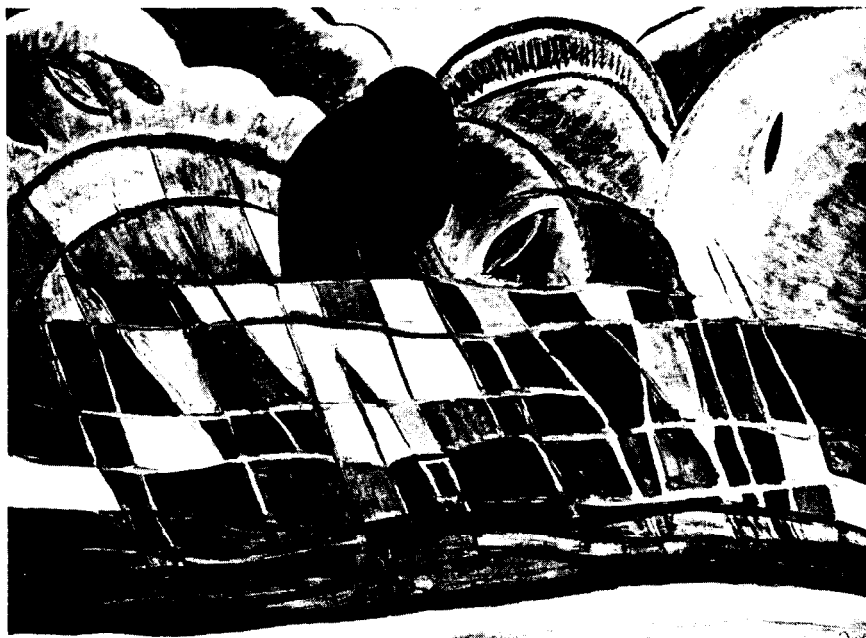
**"THE WORLD OF APU" (from India)**

"'The World of Apu' is one of the most vital and abundant movies ever made" . . . . —TIME MAGAZINE

## DON'T PUT WATER IN LAB VEHICLES

All Laboratory vehicles have been winterized with a permanent type anti-freeze. When on site, do not add water. Bring the car to the BNL Motor Repair Shop (Bldg. 423) if additional coolant is needed. If necessary to add water when off site, please notify the Motor Repair Shop upon return.

## ART EXHIBIT OPENS WEDNESDAY, NOVEMBER 7



**Brick Barge with Landscape by ARTHUR G. DOVE**

Brookhaven families and interested friends are cordially invited to the opening of the fourth Brookhaven Annual Art Exhibit on Wednesday evening, November 7, at 8:00 p.m., at the Exhibit Hall.

The Exhibit this year will comprise twenty paintings by the following artists:

Isami Doi	Jasuo Kuniyoshi	Abraham Rattner
Arthur Dove	John Marin	Ben Shahn
Seymour Drumlevitch	Georgia O'Keefe	Max Weber
Bernard Karfiol	Robert Osborn	Tseng Yu-Ho

For contrast, there will be three pieces of nineteenth century American sculpture.

### EVENING SCHEDULE (BEGINNING AT 8:00 P.M.)

Wednesday, Nov. 7	Friday, Nov. 9	Thursday Nov. 15
-------------------	----------------	------------------

### DAYTIME SCHEDULE (11:30 A.M. TO 5:30 P.M.)

Thursday, November 8	Friday, Nov. 9	Monday, Nov. 12
Tuesday, Nov. 13	Wednesday, Nov. 14	Thursday, Nov. 15
	Friday, Nov. 16	

**BERA'S COMEDY COSTUME BALL  
FRIDAY, NOVEMBER 9  
DANCING 9:00 P.M. TO 2:00 A.M.  
MUSIC BY THE STARLIGHTERS**

## FOLK DANCING

There will be folk dancing every Monday evening from 8:00 p.m. to 11:00 p.m. at the Recreation Hall.

**SNOW FOOLIN'**

The "Go" season is over and the "Snow" season is here.

Now is the time to prepare for the annual slowdown. The hazardous conditions that accompany the winter season on the road call for adequate preparation of car and driver.

Check list for car:

1. Put anti-freeze in early.
2. Tune up for winter - it means easier starts, less stalls.
3. Check battery, it's cheaper than tows or pushes.
4. Check brakes, reline or adjust.
5. Tires, make sure tread is thick and can bite into snow, use tire chains where necessary.
6. Check defroster and windshield wipers.

Check list for driver:

1. Remember in snow it's slow, start gently.
2. Apply brakes easily or pump them rapidly which allows front wheels to continue to roll naturally, **do not lock brakes.**
3. Avoid sudden changes of speed or direction.
4. In case of skids, if tires skid to the left, steer left, if tires skid right, steer right.
5. Beware of hills, shift to a lower gear if necessary, keep up your momentum, slow up at top, downhill braking is difficult.

Safety is everybody's responsibility, especially your own!

**THEATRE GROUP MEETING**

There will be a Theatre Group meeting on Tuesday evening, November 13, at 8:30 p.m. in the Recreation Building. M. Hillman will present a prepared reading of "The Boor" by Chekov. Everyone is welcome.

**SKI MEETING**

There will be a meeting of the Brookhaven Ski Club on November 19 at 8:00 p.m. in the Recreation Building. A film will be shown as usual. If you plan to ski with us, please come or call Don Gardner, at Ext. 2516.

**MICROMET SALES**

Orders for Micromet accompanied by full payment are now being taken at the Personnel Office, 58 Brookhaven Avenue. No orders will be accepted after November 30, 1962.

**BASKETBALL GROWS**

Our League, after two years experience with the new Slow-Break Rules, has now grown to a full eight team league. Entered for this season's competition are: The Old Timers (defending champions), A.D.D., Metallurgy, Applied Math., Phoubars, Biology, Blue Jays and the Bubble Chamber.

Another captain's meeting is scheduled for this Thursday, November 8, in the Recreation Office at noon. Both rules and schedules will be discussed.

League competition will probably begin on November 20. Games will be scheduled on Tuesday and Thursday evenings at 7:00 p.m. and 8:10 p.m.

**MIXED DOUBLES TOURNAMENT**

**3:00 p.m. - Port Jeff Bowl - Sat., Nov. 10**

Enough entries have been received to guarantee twenty-two prizes. Bowling balls, shoes, bags and trophies go to the winners.

Don't be late. Register at the desk when you arrive. The tourney begins at 3:00 p.m. SHARP. Please come early.

NOTE: There will not be any practice bowling on the tournament lanes after 2:30 p.m.

**VOLLEYBALL**

An opening in the Gym schedule has prompted several enthusiasts to request that volleyball be moved from Thursday to Tuesday at 5:00 p.m. in an attempt to breathe new life into the activity. So - starting next week we'll give Tuesdays a try.

If you like informality in your athletic endeavors, this is the game for you. All you need is a pair of gym shoes and your own enthusiasm to join the fun. Just drop in the Gym on Tuesday after 5 p.m. and get in the game.

**UPTON RIFLE & PISTOL CLUB**

Roy Domish closed the large bore rifle season last Sunday by shooting a 354 out of a possible 400. This brought Roy's three shoot average to a score of 341 and first prize in the tournament. Al Lukas was second with an average of 327, Pete Colombo was third with an average of 286.

The club is now looking forward to our best indoor winter season. Keep an eye on the BULLETIN BOARD for new announcements on small bore rifle shooting.

*Arrivals and Departures***WELCOME TO BNL**

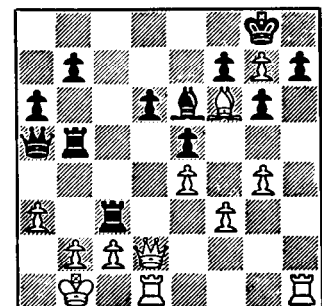
AGS	
Henry P. Noehren	Ext. 2410
APPLIED MATH.	
Roger N. Van Norton	
CENTRAL SHOPS	
Alfred Eamotte	566
CHEMISTRY	
Sandro Meloni	625
COSMOTRON	
Gerry H. Morgan	
Michael W. Sheehan	772
MEDICAL	
Arthur Sakamoto	301
NUCLEAR ENGINEERING	
Jack Fajer	2149
William Horn	
William J. Tunney	
PHYSICS	
William Hilger	
John Mellor	
Yoshiki Sato	2503
Jane Schwaner	2694
PLANT MAINTENANCE	
George E. Bryant	2120
Patrick J. Glynn	2120
Milton Jones, Jr.	2120
Donald R. Meany	639
Raymond R. Trinowski	2120
REACTOR	
Gilbert A. Johnson	692

**RECENT DEPARTURES**

CHEMISTY	
Desire J. Apers	
NUCLEAR ENGR.	
Carolyn Zatto	
PHOTOGRAPHY & GRAPHIC ARTS	
Dorothy Berg	

**CHESS PROBLEM**

In this week's problem it is White's move. Black as well as White is set for mate. But who is to win? Answer elsewhere in this week's BULLETIN BOARD.



**BERA'S COMEDY COSTUME BALL**  
**FRIDAY, NOVEMBER 9**  
**DANCING 9:00 P.M. TO 2:00 A.M.**  
**MUSIC BY THE STARLIGHTERS**

**KEGLER'S KORNER**

BY ROGER CALDWELL

Modern sports records have a short half-life and seem to be made to be broken. Not exactly broken, but well cracked is Bobby Wessel's high BNL scratch game of 277, dating from only 1960. After Walt Ream's effort of the previous week was stymied at 264 by a tenth frame 5-10 split; Art Uddman of the Screwballs tied the standing BNL record with a 277 game. Leading off with a compromising spare, modest Art then marked up nine strikes in a row. Only a light pocket hit in the second ball of the tenth frame prevented a new record from being born.

Well into the season, the BNL Leagues often turned up some interesting battles for the top spots: While the Fire Department seems to have a firm handhold on the Green League at Maggio's, the Wednesday Purple League is in a three-way tie between the Designers, Hot Shots and Phoubars. The Hot Shots have been hanging in with the higher averaged Phoubars and Designers by bowling consistently just over their averages. High handicapping is the secret for the honorable Ah So's in their finger nail and eyetooth battle with Utilities and Biology for top dog in the Port Jeff Red League.

As for the gals, the Galaxies lead the Pink League by consistently showing up with a full team. The ladies are showing a high percentage of absenteeism.

## BOWLING LEAGUE STANDINGS

**PURPLE LEAGUE**

TEAM	WON	TEAM	WON
1. Designers	16	5. Bowl Aids	11
2. Hot Shots	16	6. Hopefuls	10
3. Phoubars	16	7. Dirty Birds	9
4. Woodbutchers	12	8. Fiscal	6

**BLUE LEAGUE**

1. Alleygators	17	6. Skins	12
2. Sleepers	15	7. Bubble Finks	11
3. Techs	14	8. Splitters	11
4. Nuclides	13	9. Needlers	10
5. Screwballs	12	10. Bubble Boys	5

**RED LEAGUE**

1. Biology	19	7. Scotchies	14
2. Ah So's	18	8. Spitfires	14
3. Utilities	16	9. Dirty Sox	13
4. Cosmos	15	10. HP In	11
5. Ghotiz	14	11. HP Out	11
6. Mecca	14	12. Floorwalkers	9

**BERA'S COMEDY COSTUME BALL**

Presented by the Instrumentation Division



You saw the beginning of what could be a hilarious event this past Friday in the Cafeteria – the lovely Bride and Groom and wedding reception. This is only a starter of the fun in store for you on Friday, November 9. We are sure that it got your imagination going; let's see if you can't come up with something to top it. Prizes will be offered for costumes and here's a chance to let yourself go. Let's get in a gay mood and relax a bit. Have fun and make this dance a big success. There are lots of surprises and laughs.

**Remember the date****Friday, November 9 – Gymnasium****Music by THE STARLIGHTERS****Dancing 9:00 p.m. to 2:00 a.m.**

Employees and Escorts – \$1.50 each

Guests – \$2.00 each

**GREEN LEAGUE**

1. Fire Dept.	19½	5. Old Timers III	12½
2. Electronics	17	6. Reefers	12
3. Old Timers I	16	7. Blackbirds	11
4. Old Timers II	14½	8. Gnats	9½

**PINK LEAGUE**

1. Galaxies	18	6. Sprites	12
2. Medigals	15	7. Odds & Ends	10
3. Alley Kats	15	8. Bloopers	9
4. Nightingales	13	9. All Thumbs	9
5. Dipions	13	10. Twinkletoes	6

**SCHEDULE****Monday:**

5:00-7:00 p.m. - Tennis (by reservation)  
7:30-9:30 p.m. - Archery Club

**Tuesday:**

5:00-6:45 p.m. - Volleyball - General Activities  
6:45-9:30 p.m. - Basketball League - 2 Games  
7:00 and 8:10 p.m.  
Table Tennis

**Wednesday:**

5:00-7:00 p.m. - Tennis - Table Tennis  
7:00-9:30 p.m. - General Activities

**Thursday:**

5:00-6:45 p.m. - General Activities  
6:45-9:30 p.m. - Basketball League - 2 Games  
7:00 and 8:10 p.m.  
Table Tennis

**Friday:**

5:00-7:00 p.m. - Tennis.

**GYM OPEN NEXT WEEK**

Starting Tuesday, November 13, the Gymnasium will be open evenings (November-April). Equipment is on hand for badminton, basketball, exercising, volleyball and table tennis. Locker and shower facilities are available.

## CLASSIFIED ADS FOR SALE

1960 PEUGEOT - Beige, sunroof, radio, heater, whitewalls, std. trans., with overdrive. Very good condition. Bernie, Ext. 359.

1957 CHEVROLET - 4 door green sedan, power glide, power steering. One owner. Good cond. Ext. 2294.

1955 DODGE - 6 cylinder, std. shift, radio and heater, good tires, good cond. \$335. Avail. Nov. 21. A. Tench, Ext. 614.

1952 NASH - 2 door sedan, good riding. Heater, radio, overdrive, alarm system, 6 cyl. Good cond. \$75. L. Kopp, Ext. 2719.

1951 PLYMOUTH - Two door sedan needs some work on motor. \$40. (R&H) E. Rosavitch, EM 3-6869.

CHRIS CRAFT INBOARD - 21'9", 7' beam, 60 hp. Chris Craft, cabin, head, galley. Carl, HR 2-1761 after 6:00 p.m.

26' CHRIS CRAFT - Speed boat, Osco Ford engine. \$300. takes it. Sonny, Ext. 2154 or PA 7-4925.

TRICYCLE - Large, good cond. \$10. Ext. 535.

TABLE - 6 pc. formica set, gray wood grain. Extension leaf. Excell. cond. \$189 new. Asking \$50. GR 5-4199.

22 CAL. RIFLE - Pump action, very good cond. \$20. D. Richardson, Ext. 2212.

KITCHEN EQUIPMENT - 18 glasses, 3 casseroles, 2 vacuum flasks, cookie trays, cake tin, dish racks, etc. \$10. the lot, or separately. Anne, Ext. 2351.

GARAGE DOOR - Berry, 7'x8' overhead aluminum "swing-out" type. A. Manger, Ext. 566.

SOFA - Chippendale, 6' length, good cond. Single cushion of down and foam rubber, velvet upholstery, slip cover, asking \$65. Ext. 2365 or GR 5-3574.

PROGRAM FOR RAPID READING - Columbia Univ., complete and as new, half price. Moneti, Ext. 2657.

BICYCLE - Girl's 26" lightweight. Like new, \$35. Also mahogany step table, never used. \$45. EM 3-6219.

WATER HEATER - 30 gal., in working order. Make offer. L. Potter, Ext. 473.

ORGAN - Electric chord, like new, 34 full size keys, play by numbers. \$40. Ext. 2167.

JENCO VIBES - Portable, finished in blue pearl. Like new, hardly used. Must sell, Excell. buy. AT 1-6632 after 6 p.m.

G.E. RANGE - Electric, 4 burner. Good cond. \$30. AT 6-8952.

CRIB - and mattress, \$10. Bed frame and board \$6. TV antenna, \$10. Dinner set (50 pcs.) \$6. Swing, \$5. Odds and ends. Moneti, Ext. 501/2657.

ORGAN - Wurlitzer spinet, two manual plus full set of factory installed chord buttons. Solid walnut, Italian provincial cabinet. Cost \$1300 new. Bargain. Ext. 2512 or EM 3-6155.

REFRIGERATOR - 11 cu. ft. Westinghouse, good cond. \$25. Ext. 747 or AT 6-0269.

AMMUNITION - Have shells, calibre .300 Savage, 180 grain. 6 boxes (20 shells per box). Selling in stores for \$4.60 a box, will sell 6 boxes for \$20. or \$3.50 per box. Ext. 403 or 256.

TV - 17" Admiral (1955). Needs some work. Picture tube less than a year old. Best offer. Manny Hillman, Ext. 2561.

CEMETERY PLOT - Washington Memorial Park. Roosevelt Section. Bob, Ext. 2152 or SH 4-2574 evenings after 6:00 p.m.

### FOR RENT

STUDIO APARTMENT - Furnished with utilities included. Located in Shirley. Marlana Walker AT 1-8361.

### WANTED

STROLLER - and chair for a child. Unna, Ext. 505.

PLAYPEN - S. Mazersky, Ext. 508.

ENGLISH LESSONS - for the wife of a staff member whose native language is German. J. Victoria, Ext. 493.

FURNITURE - Double or triple dresser, chest of drawers and desk. L. Lax, Ext. 301 or WA 4-2019.

LANGUAGE LESSONS - If you are interested in teaching a language, especially English, please send information to J. Victoria, Ext. 493.

### CARPOOLS

Rider-driver wanted for existing carpool from Port Jefferson. Ext. 2294.

Paying rider would like transportation to Lab. from Garfield Ave., Sayville. C. Reich, Ext. 2700/2701.

An additional member is needed for an existing carpool originating in the Massapequa Area. Don Eversley, Ext. 2158.

Fourth driver wanted to complete existing carpool from Port Jefferson area. Carol, Ext. 2481.

### SOLUTION TO CHESS PROBLEM

WHITE	BLACK
1. QxP (prevents Black's)	1. RxP, KxR
	2. QxP Check
	2. Q-Q8 Mate
	or
1. QxP	1. R-B1
2. Q-B8 Check	2. RxQ
3. PxR (Q) Check	3. KxQ
4. RxP and mate ultimately by R-R8.	