

the Bulletin Board

VOLUME 16, NUMBER 11

Published by the BNL Personnel Office

NOVEMBER 20, 1962

PERSONNEL SERVICES GROUP BUYING

Personnel Services has provided a group buying service for employees at the Personnel Office, 58 Brookhaven Avenue.

As of Wednesday, November 21, this service will be discontinued at its present location and transferred to the Recreation Office, 3 Center Street, Ext. 2808.

Beginning Monday, November 26, Personnel Services will continue to offer the same group buying service at the new location daily from 9:00 a.m. to 1:00 p.m.

The service at present includes the sale of film and film processing, TV and radio tubes with a tube testing machine, coffee, and a rental library.

TRAFFIC HAZARDS

There are a number of spots at the Laboratory where potential hazards exist for pedestrians and vehicles. One of these is on Center Street opposite the east side of the Administration Building. On a trial basis, the parking places are being changed and their number reduced. They will be limited to **two hour parking** in order to accommodate people coming to the Administration Building and nearby buildings for short periods. The people working in the Administration Building will park their cars in the parking lot in back of the gymnasium or elsewhere.

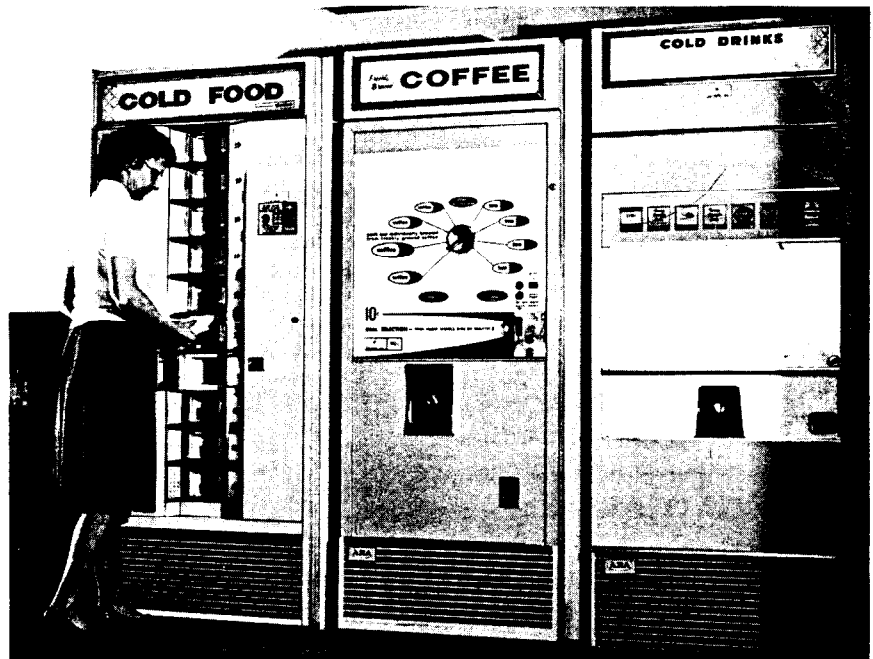
Other areas at the Laboratory that are potentially hazardous are being studied and are to be corrected one by one. Some of the changes may cause minor inconvenience to employees who have been parking in overcrowded areas. However, as there have been several rather severe auto accidents on site recently, it is necessary that on-site traffic and parking be brought into line with the standards commonly observed throughout the country.

CHESS NEWS

Entries for the Fifth United States Open Golden Knights Postal Championship open this month. \$1,000.00 is available in prizes.

For entry blanks and information, write to Martin Van Lith, 2 Center Street.

VENDING MACHINES INSTALLED IN THE CAFETERIA



Commencing Wednesday evening, November 21, the new vending machines will be in operation. As a result, food will be available in the BNL Cafeteria 24 hours a day – every day – rain or shine! The three machines, located in the East Room of the Cafeteria will be operating whenever the regular Cafeteria and Snack Bar are closed. Soup, coffee, tea and hot chocolate, as well as milk, different kinds of sandwiches, salads and deserts may now be obtained at the flick of a lever. There will be a toaster nearby for warming sandwiches.

The Cafeteria Management will do its best to make this new service perfect, but please be patient with minor faults in the food machine vending service for the first week or two until they can find out by experience how best to serve you.

ANNUAL ART EXHIBIT A SUCCESS

The Annual Art Exhibit, which came to a close last Thursday evening, had a total attendance of some 600 visitors with 150 coming to the Opening Night, November 7. This year's show was held for one more day than in other years, and was open on three evenings, which proved very successful. Among non-

Laboratory visitors there were artists and art teachers in the vicinity who were surprised and impressed to see paintings by such well-known American artists.

The Art Committee is very pleased that so many BNL employees and their families and friends came to this exhibit, and wish to thank the many people who helped in the "hanging", the supervision during the show, and the dismantling.

PIANIST HERE DECEMBER 5



Gary Towlen, brilliant nineteen year old pianist will be at the Brookhaven Center on Wednesday evening, December 5.

This will be the second in BERA's series of five concerts to be offered at the Laboratory this season. Rounding out the season are:

TRIO DI BOLZANO February 26
DUO DI ROMA March 20
NEW YORK CHAMBER SOLOISTS May 2

Season tickets are still being sold which offer a savings to you and your family. Call Clemens Auerbach, Ext. 753 and order yours now.

NEXT BERA MOVIE

"THE YOUNG AND THE PASSIONATE"

Directed by Fredrico Fellini

Thursday, Nov. 29 - Lecture Hall - 8:30 pm

OPERA CLUB NEWS

Due to the large demand for Opera tickets, all orders **must be placed at least fifteen days in advance**. Orders may be placed at the Recreation Office, 3 Center Street, Monday, Wednesday and Friday between the hours of 12:00 M. and 2:00 p.m. **only**.

DECEMBER SCHEDULE:

- 5 Don Giovanni
- 6 Pelleas
- 7 Rosen Kavalier
- 8 Cavalleria & Pagliacci (Mat.)
- 10 Pelleas
- 11 Meistersinger
- 12 Cavalleria & Pagliacci
- 13 Ballo
- 14 Rosen Kavalier
- 15 Aida (Mat.)
- Butterfly (Eve.)
- 17 Chenier
- 18 Fledermaus
- 19 Traviata
- 20 Don Giovanni
- 21 Barber of Seville
- 22 Rosen Kavalier (Mat.)
- Pelleas (Eve.)
- 24 Cavalleria & Pagliacci
- 25 Don Giovanni
- 26 Aida
- 27 Butterfly
- 28 Meistersinger
- 29 Pelleas (Mat.)
- Ariadne (Eve.)

ANNOUNCEMENT

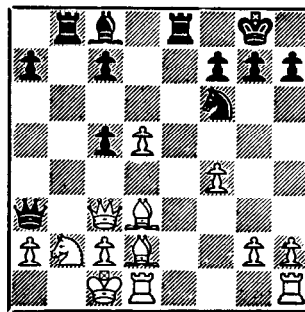
The Nimrod Archery Club will begin indoor target shooting every Monday at the Gym beginning at 7:00 p.m. through 10 p.m. Anyone interested, whether you can shoot a bow or not, is urged to come. Call J. Post, Ext. 772 for further information.

MICROMET SALES

Orders for Micromet accompanied by full payment are now being taken at the Personnel Office, 58 Brookhaven Avenue. No orders will be accepted after November 30, 1962.

CHESS PROBLEM

In this week's problem, it is Black's move and win. Black is a piece down and must make the right move to win. How? Answer elsewhere in this week's BULLETIN BOARD.



Mr. and Mrs. Ralph Perry at B.E.R.A.'s Comedy Costume Ball November 9. Ralph is on the left or on the right. . . . we think.

Arrivals and Departures

WELCOME TO BNL

ARCHITECTURAL PLANNING	
Paul V. Mohn	Ext. 2802
CENTRAL SHOPS	
Richard Balmer	2349
COSMOTRON	
Nancy Pullen	2320
DIRECTOR'S OFFICE	
Eleanor Murgatroyd	2265
MECHANICAL ENGINEERING	
George Mooney	2331
NUCLEAR ENGINEERING	
Raymond Parsick	2387
Yaw C. Tang	463
PHYSICS	
Fernando Aguillo-Lopez	
Virgil E. Barnes	
Robert A. Johnson	
Eileen Saffron	
PLANT MAINTENANCE	
Richard W. Allen	2120
Frederick J. Hill	2382
Warren F. Hulse	369
Frank Liparoto	2120
REACTOR	
George R. Smidt	692
SUPPLY & MATERIEL	
Barbara Durciansky	2164

RECENT DEPARTURES

BIOLOGY	
Anne L. Tench	
NUCLEAR ENGINEERING	
Kenneth Warren	
PHOTOGRAPHY & GRAPHIC ARTS	
Marie J. Slack	

VOLLEYBALL LEAGUE

Tuesday evening has been set aside on the Gymnasium schedule for our volleyball enthusiasts. Two courts are available for games from 5:00 p.m. to 6:45 p.m. For the past few years, play has been more or less informal with no regular scheduled competition.

However, this season several departments have indicated they would like to get an active league started with a pre-arranged schedule, team standings, and at the end of the season, trophies for members of the winning team.

Entries are now being accepted at the Recreation Office for teams wishing to enter the competition. The names of eight players will constitute a minimum roster. Games will be scheduled weekly. A meeting of team representatives will be held in the near future to draw up rules and schedules.

Entry Deadline: November 30.

For information, call G. Sabine, Ext. 391.

FOLK DANCING

There will be folk dancing every Monday evening from 8:00 p.m. to 11:00 p.m. at the Recreation Hall.

GYM SCHEDULE**Monday:**

5:00-7:00 p.m. - Tennis (by reservation)
7:30-9:30 p.m. - Archery Club

Tuesday:

5:00-6:45 p.m. - Volleyball - General Activities
6:45-9:30 p.m. - Basketball League - 2 Games
7:00 and 8:10 p.m.
Table Tennis

Wednesday:

5:00-7:00 p.m. - Tennis - Table Tennis
7:00-9:30 p.m. - General Activities

Thursday:

5:00-6:45 p.m. - General Activities
6:45-9:30 p.m. - Basketball League - 2 Games
7:00 and 8:10 p.m.
Table Tennis

Friday:

5:00-7:00 p.m. - Tennis.

**DON'T PUT WATER
IN LAB VEHICLES**

All Laboratory vehicles have been winterized with a permanent type anti-freeze. When on site, do not add water. Bring the car to the BNL Motor Repair Shop (Bldg. 423) if additional coolant is needed. If necessary to add water when off site, please notify the Motor Repair Shop upon return.

PERSONNEL RECORDS

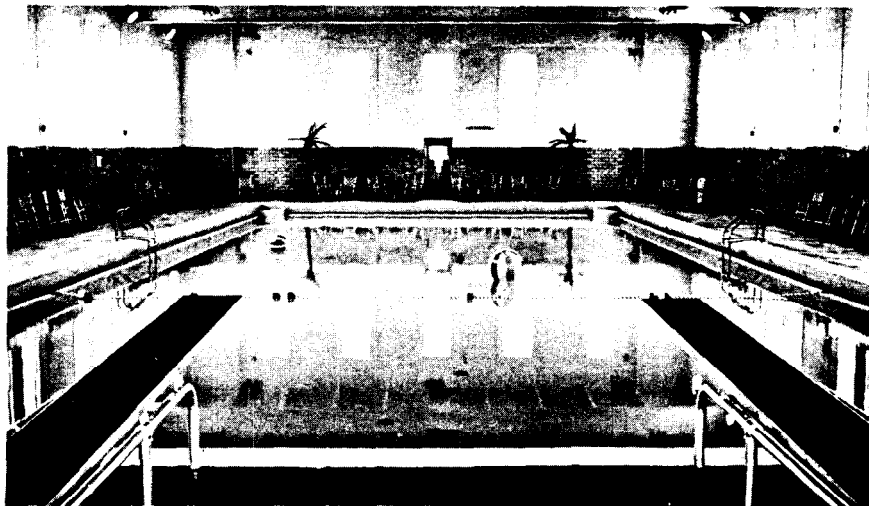
To All employees: Be sure to report any changes in home address or telephone number to Personnel Records, 58 Brookhaven Avenue.

**SOFT ICE CREAM MACHINE
INSTALLED IN CAFETERIA**

Soft ice cream is now available at the Snack Bar in the Cafeteria throughout the day.

SOLUTION TO CHESS PROBLEM

1. QxP should win for Black,
threatening 2. Q-R8 mate if
White would move the Knight -
Black's 2. R-N8 is mate
White's B-K would be defeated by
Black's R-K7
3. BxR 3. N-K5 and mate next.

**UNDERNEATH THE PALM TREES
SIT - RELAX - SWIM**

The Swimming Pool is now open full tilt - from 5:00 p.m. to 10:00 p.m. on Tuesday, Wednesday, Thursday, and Friday.

DAILY ADMISSION: Employee or Family Member \$.35. Guest \$.60

SEASON TICKET: Good for unlimited swims until mid June.

Employee or Family Member \$5.00. Guest \$10.00.

Locker and shower facilities are provided. Items for sale at the Pool include: bathing caps, nose clips, ear plugs, and combs. Towels and men's trunks are available for rental.

SEE YOU THERE



"The Blue Fairy" Don David, who won prize as Funniest Female, with unknown companion at Comedy Costume Ball.

THANKSGIVING HOLIDAYS

THURSDAY AND FRIDAY, NOVEMBER 22 AND 23

CLASSIFIED ADS

FOR SALE

1955 CHRYSLER - R&H, aut. trans., power steer., perfect cond., see it. Owner leaving country. Monet, Ext. 2657/501.

1951 FORD - V-8, std. shift, radio & heater 2 door sedan, good condition, winterized. GR 5-5894.

1960 VALIANT - Blue, 4 door sedan, auto. trans., radio & heater, very good condition. Must sell, \$950., L. Livingston, Ext. 301.

1938 PLYMOUTH - In excell cond., low mileage, 5 brand new tires. \$225. Ext. 301-38 or AT 9-1865 after 6:00 p.m.

1962 CHEVROLET 6 CYL ENGINE - Complete, has only 4,000 miles. Want to install a V-8. Also: 1955 6 cyl. engine complete, less generator. \$50. firm. Tut, Ext. 2255.

3 BEDROOM HOUSE - Roomy two story, modernized 1890 vintage, baseboard heating, aluminum siding, possibilities for expansion. 500 feet from the bay in Blue Point. EM 3-6521.

LAWSON ESTATE - Custom built brick house. 9 rooms, 2 baths. Full cellar - garage - large fireplace in living room. Over 1/4 acre beautiful grounds near stores, churches, hospital. Mastic Beach. AT 1-9808.

HOUSE - 7 room split level in beautiful Shoridge Hills. Private beach rights, many luxury features. No reasonable offer refused. SH 4-9877 evenings.

21 FOOT SLOOP - Narrasketuk, two sets of sails, (working and racing), stainless steel & brass rigging all in good shape. Bought large boat. Must sacrifice. \$550 takes all. H. Brenneis, Ext. 301-23 or HR 3-3942.

SAILBOAT - 16 ft., good cond., paddle, anchor, rigging & sails good, asking \$175. R. Meyer, Ext. 481 or LT 9-5757.

RACING HULL - Class "C" racing hull, 10 ft. all hardware for inboard engine, engine free. Would make good duck boat. Asking \$40. R. Meyer, Ext. 481 or LT 9-5757.

ENCYCLOPEDIA - Grolier's Popular Science Encyclopedia 1958 edition 10 volumes plus 3 annual supplements. Very good condition, \$25. Ext. 2466.

RIDING BOOTS - Ladies riding boots, size 6. Two pair sidewalk roller skates, metal clamp-on, AT 6-8215.

HAIR DRYER - New GE hair dryer, never used. Ideal for Christmas gift, \$15. MacKenzie, Ext. 572 or AT 6-0999.

GAS RANGE - 36 inch Hardwicke, 4 burner, oven & broiler. Simple lines, \$30. 2491 or AT 6-8517 after 5:30 p.m.

FAIRCHILD MONOPHONIC - No. 225A cartridge for LP records. Approx. 20 hrs of use, \$20. Irvin Meyer, Ext. 2222.

DESKS - Childrens desks with blackboard \$2.50 each, Radio tot playing cart \$3, bed frame and board \$6., all as new, Monet, Ext. 501 or 2657.

SHOTGUN - 16 gauge shotgun, bolt action, tubular feed, 3 shot plus 2 boxes shells and

vest, \$20. Excellent condition, call Ext. 2369 12 noon until 1 p.m.

MAHOGANY SIDEBOARD - antique sideboard, antique highboy desk, painted wood youth bed, 2 walnut beds, single, similar period but not twin, painted chest of drawers, wash stand, assorted tables, wicker porch furniture, 2 sisal rugs, pair men's English whipcord riding breeches, size 36. All at bargain prices. EM 3-6425.

35MM CAMERA - Kodak reflex camera, F2./50 mm lens, built-in light meter, l.v.s., case, lens shade, No. 2 yellow filter, No. 1 and 2 close-up lens, series 6 lens adapter excellent condition. Would make a fine Xmas gift. \$75 complete. C. Porter, Ext. 2373 or AT 4-8235.

ADAPTER - Eico multiplex, Model MX99, factory wired and tested, \$39.50. (Have changed to Scott equipment). Hallicrafter, S-38, all band receiver, \$20. Nils, Ext. 311.

PUPPY - One long-eared puppy, black with tan markings. Short-haired, 6 weeks old. Mildred, Ext. 603 - 664. Free to anyone who can give it a good home.

WHEELS - 1 pr. wheels for 1956 Mercury - \$5. R. Isler, Ext. 649, 941-4696.

AIR COMPRESSOR - 1/2 h.p. - 150 lb. pressure \$50. Kleer-Flo, metal parts washer, \$25. 1/2 ton chain hoist, \$15. J. Haufman, Ext. 406 or AT 6-8275.

JET PUMP - Complete with 1 hp. Franklin Electric motor, controls & water tank. 2 1/2 yrs. old. First offer takes all. A. Kevey, Ext. 2516.

SKATES - "Chicago" roller skates, white, shoe size 8, rubber toe stops; in good cond. T.L. Trueman, Ext. 2681.

CHAIRS - English lounge chair, Barrel chair, \$35. each, G.K. Ahlers, Ext. 440.

G.E. RANGE - Electric range, 3 burners & deep well, good cond. \$25. John, Ext. 323 or EM 3-6015 after 6 p.m.

RAPID READING - Program for rapid reading, Columbia Univ., complete and as new, half price. Monet, Ext. 2657/501.

SPEAKER ENCLOSURE - Bass reflex enclosure for 8" speaker. 3/4" plywood, glued joints. 10 1/2"x17"x22". \$2. M. Greene, Ext. 2560.

GAS HEATER - Need heat? 25,000 BTU gas heater (unvented) for bottled or natural gas, plus regulator. Ideal for workshop, etc. Like new - \$20. John Post, Ext. 772.

WASHING MACHINE - G.E. fully automatic with water saver. Good condition, \$30. F. Enright, Ext. 2390.

ELECTRIC HOT WATER HEATER - 220 volts, 30 gal., glasslined, excell. cond. \$20. Maytag Mangle, 2 speed and 2 heating elements. Good cond. \$35. Ext. 311 or LT 9-5469.

AUTO. TURNTABLE/CHANGER - Garrard Type A, with Pickering 381A stereo cartridge, complete with walnut base & connectors. Cost \$132 new, sell for \$70. Changer alone, \$50. Roger Caldwell, Ext. 301-3, 708.

ORGAN - Wurlitzer spinet, 2 manual plus full set of factory installed chord buttons. Solid walnut Italian provincial cabinet. 1 1/2 yrs old. For quick sale yours for almost half original cost. Ext. 2512 or EM 3-6155.

PUPPY - Present this ad and get a semi-St. Bernard puppy free. No jingles to write. No box tops necessary. J. Hartin, Ext. 2212 or WA 9-4890.

PALOMINO HORSE - Three quarter palomino horse ten years old. 4 gaits. Very sound. Good for children Asking \$175. R. Meyer, Ext. 481 or LT 9-5757.

OUTBOARD - 1961 40 hp manual start short shaft Johnson outboard not used in 1961. 2 six gallon gas tanks. Whitney single lever control box, 2 props, all like new. Total value \$590. Asking \$350. for all. Call R. Meyer, Ext. 481 or LT 9-5757.

FUR COAT - Silver tip gray muskrat full lgth. fur coat, size 12-14. Very good condition. Girl's white shoe roller skates like new. Chicago ball bearings. Coo-coo clock, 2 tone - German made. J.A. Bunt, Ext. 2389 or call GRover 5-1584.

GAS RANGE - Magic Chef. Good condition. \$20. G. Floyd, Ext. 2254.

DEEP WELL JET PUMP - 1/2 hp. Wayne, good. \$25. P. Delmonte, Ext. 577.

FOR RENT

6 ROOM RANCH - 2 bedrooms, 2 baths. Fully furnished - garage. Large plot, recently built, 15 mins from Lab. E. Patchogue. AT 9-0751.

FURNISHED APARTMENT - 3 rooms in Yaphank. Conveniently located near store & P.O. \$90 per month includes utilities. Ext. 301-12.

FURNISHED APARTMENT - 2 cozy rooms, elec. kitchen, refrigerator, private bath & entrance, 12 minutes to Lab., Mastic area. AT 9-8512.

LOST AND FOUND

FOUND - License plate No. 9006 RV found near Bubble Chamber, may be picked up in Personnel.

SLIDE RULE - Lost. Aristo "Studio", my name is inscribed on the rule. K. J. Foley, Ext. 2646.

CARPOOLS

Paying rider needs ride from West Avenue, Patchogue, Ext. 2466.

Paying rider needs transportation for two or three months from Association Rd., Bellport. Barbara Foley, Ext. 2245.

Anyone wishing to join carpool to New York for fencing club please get in touch with Peter Townsend, Ext. 2309.

2 drivers wanted for carpool from W. Babylon-Lindenhurst area to Lab. E. Potter, Ext. 2456.

3-man carpool from Hicksville - Huntington area desires 4th member. Contact G. Jackson Ext. 301-1-3.

Still looking for a driver from Deer Park area 8:30 to 5 p.m. shift. Prompt arrival & departure time. Don, Ext. 2558.

One carpool member has been lost between exit 32 on Southern State Parkway (where we start) and the Lab. Replacement is desired. Eileen O'Donnell, Ext. 2114.