

the Bulletin Board

VOLUME 16, NUMBER 13

Published by the BNL Personnel Office

DECEMBER 4, 1962

BERA CONCERT WEDNESDAY

A reminder that GARY TOWLEN, young Blue Point pianist, will return from his latest European tour just in time to give the second concert in the current series.

TIME: Wednesday, December 5, 8:30 pm

PLACE: Brookhaven Center.

Single and Season tickets may be purchased at the door.

DANCE CLASS

A class in dancing instruction by the Arthur Murray Studio will be organized during the month of January. Classes will be conducted Wednesday evenings, in the Recreation Building, at 8:30 pm. Make preparations now, and watch the BULLETIN BOARD for further information.

MAILING CHRISTMAS CARDS

Postmaster Garrett of the U.S. Post Office requests that you separate your Christmas cards into boxes or bundles according to city or state destination before bringing them in to be mailed.

CHESS CONTEST WINNERS

Over seventy people submitted their answers to the chess contest in last week's BULLETIN BOARD. Seven lucky people had the correct answer and received a chess set from BERA. The first three correct were N.P. Rathvon, A.O. Allen, and S. Kalbitzer.

The key move was White's King to Bishop:

- | | |
|-------------------|-----------------------|
| 1. K-B | if K x N |
| 2. Q-Q4 Mate | |
| 2. N x P Mate | if K-B8 |
| | if P-B8 (Queen) Check |
| 2. N-2 - Q Mate | |
| | if K-K6 |
| 2. NB-2 - K4 Mate | |

NEXT BERA MOVIE

"THE COUSINS"

Short Subject: "Chinese Shadow Play"
Thurs., Dec. 13, - 8:30 p.m. - Lecture Hall

GYM CLOSED DECEMBER 12

The Gymnasium will be closed for all physical activities on Wednesday, December 12, due to the scheduled Bubble Chamber Christmas Party.

DR. FRANCIS T. MILES APPOINTED TO POST WITH INTERNATIONAL ATOMIC ENERGY AGENCY IN VIENNA



Dr. Maurice Goldhaber, Director, has announced that Dr. Francis T. Miles, Deputy Chairman of the Nuclear Engineering Department, is being granted leave of absence to accept a two-year appointment as Director of the Division of Reactors in the Department of Technical Operations of the International Atomic Energy Agency in Vienna, Austria. Dr. Miles will leave Brookhaven on December 6.

Dr. Miles was born in Princeton, New Jersey, and attended Princeton University, where he received his A.B. in 1931 and his Ph.D. in inorganic chemistry in 1936. He studied at the University of Basel, Switzerland, in 1934-35.

In 1943, Dr. Miles became a staff member at the S.A.M. Laboratories of the Manhattan Project at Columbia University. In 1946 he transferred to the Clinton Laboratory (now Oak Ridge National Laboratory), and in 1948 he came to BNL as a research chemist to work on reactor chemistry.

Dr. Miles' fields of scientific interest include: separation processes connected with nuclear energy applications; fluid fuel reactors; chemistry of gaseous diffusion of uranium; phosphate titrations; and graphical calculation of vapor pressure and absorption.

TWENTY-SECOND BROOKHAVEN LECTURE

BY HENRY QUASTLER - Biology Dept.

Title:

"CHEMICAL COMMUNICATION SYSTEMS
IN THE CELL"

Lecture Hall - 8:00 p.m. - Wed., Dec. 12

A buffet supper (\$2.75) will be served at the Brookhaven Center before the lecture, beginning at 6:00 p.m. Reservations should be made at least one day in advance by calling Ext. 2302 before 5:00 pm, or Ext. 2453 in the evenings.

Refreshments will be available in the Research Staff Lobby following the lecture.

LOCAL AREA TELEPHONE CALLS

All BNL telephones have been equipped for local ("8" level) toll free area dialing. After receiving the dial tone, dial "8", wait for a second dial tone and then dial the local number. Local toll free areas are: AT-6; AT-9; GR-5; HR-3; YA-4; SE-2.

Be sure to dial "8" first before dialing the local number. By dialing GR-5, HR-3 or SE-2 prior to dialing "8" you will activate on-site extensions 475, 473 or 732.

Do not use the dial "8" procedure when placing official toll calls. They will be intercepted by the New York Telephone Company operator and denied. Dial the BNL operator and place the call accordingly.

Personal calls chargeable to a Toll Credit Card, to be charged collect, or when the charge is to be applied to a third telephone number, may be placed by dialing "8" and then dialing the (0) operator, and stating the details to the responding New York Telephone Company operator.

U.S. MAILBOX MOVED

The U.S. mailbox, formerly located in the parking lot near the side door of the Plant Maintenance Building (179), has been moved to outside the building's front door on Center Street (across the street from the Administration Building). The adjacent parking place is reserved for people mailing letters in this outdoor mailbox from their cars.

TICKET SERVICES

Discount cards for Madison Square Garden's "Ice Follies of 1963" are now available at the Recreation Office.

Tickets may be purchased with this card for evening shows only on January 8, 9, 10, 11, 14, 15, 16. The prices with discounts are \$4.00, \$3.50 and \$2.90.

Discount cards are still available for the **New York Rangers** and the **New York Knickerbockers** playing at Madison Square Garden.

All ticket services are available at the Recreation Office, 3 Center Street, daily from 9:00 a.m. to 1:00 p.m. **ONLY.**

OPERA

Orders are being taken for the following dates:

DECEMBER SCHEDULE:

- 24 Cavalleria & Pagliacci
- 25 Don Giovanni
- 26 Aida
- 27 Butterfly
- 28 Meistersinger
- 29 Pelleas (Mat.)
Ariadne (Eve.)
- 31 Fledermaus

JANUARY SCHEDULE:

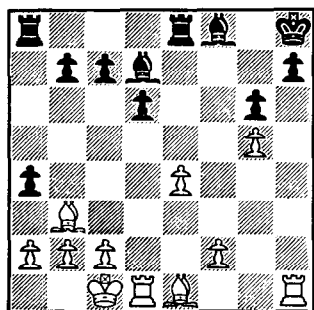
- 1 Traviata
- 2 Rosen Kavalier
- 3 Ariadne
- 4 Aida
- 5 Meistersinger (Mat.)
Barber of Seville (Eve.)
- 7 Rosen Kavalier
- 8 Ernani
- 9 Ballo
- 10 Barber of Seville
- 11 Dutchman

All orders must be placed at least **fifteen days** in advance.

Opera services are now available at the Recreation Office, 3 Center Street, **daily from 9:00 a.m. to 1:00 p.m. ONLY.**

CHESS PROBLEM

In this week's problem it is White's move and win. There is more than one way to win, so try and figure out the best. Answer elsewhere in this week's BULLETIN BOARD.



Arrivals and Departures

WELCOME TO BNL

AGS	
Casimir J. Kadow	
CENTRAL SHOPS	
Earl W. Foxwell	Ext. 577
COSMOTRON	
Richard E. Isler	772
J. Dennis Klein	772
INSTRUMENTATION & HEALTH PHYSICS	
Craig A. Goodman	2474
MECHANICAL ENGINEERING	
Anthony P. Meade	2634
John L. Wells	2556
NUCLEAR ENGINEERING	
Ann H. Miller	
PHOTOGRAPHY & GRAPHIC ARTS	
Lloyd J. McFetridge	2229
PLANT MAINTENANCE	
John Dorr	2382
SECURITY & PLANT PROTECTION	
Lewis DiPietro	

RECENT DEPARTURES

DIRECTOR'S OFFICE	
Margaret A. Gallitelli	
FISCAL	
Helen Stark	
PHYSICS	
Giancarlo Moneti	
PLANT MAINTENANCE	
Charles Seaman	

VOLLEY BALL LEAGUE FORMING

To date there are five department teams entered in the volleyball competition which is about to begin next Tuesday evening, at 5:15 p.m., in the Gymnasium. Medical, Cosmotron, Bubble Chamber, Chemistry, and a group bashfully called the Anons (from Physics) are all set to go. A couple of other teams are in the formation stages.

There will be a captain's meeting to review rules and schedules at noon in the Recreation Office, 3 Center Street, on Wednesday, December 5.

If you would like to join a team, or desire additional information, call G. Sabine, Ext. 391.

MICROMET

Employees who have placed orders for micromet may pick up their material beginning Friday, December 7, at the **Recreation Office** in the Gymnasium between the hours of 9:00 a.m. and 1:00 p.m. No new orders will be accepted at this time.

Basic research is what I am doing when I don't know what I am doing. —WERNER VON BRAUN

BUT THE SENTIMENT REMAINS THE SAME

Christmas greeting cards have advanced a giant step in the century since 1843 when the first card, designed by John C. Horsley of London at the suggestion of English educator Sir Henry Cole, made its December debut. It depicted a Victorian family party at which those present were drinking the health of the absent friend who received the card.

But the original idea of expressing Christmas greetings with fine art has remained unchanged. Americans shopping for cards this year may select, for example, a painting called "Hunting Scene"—drawn by amateur artist Sir Winston Churchill. Or they may choose paintings by the late French master, Maurice Utrillo; the Italian, Massimo Campigli; or such Americans as Norman Rockwell, Saul Steinberg and Thomas Vroman.

In the USA, the German-born Boston lithographer, Louis Prang, first offered printed Christmas cards for sale in 1875. The initial ones were fancy—decorated with apple blossoms, Killarney roses, et al. Later, he added children in the snow, fir trees, fireplaces; finally, Santa Claus came on strong.

Prang withdrew his cards from public sale in 1890, when a flood of cheap and ugly Christmas cards hit the market. But the Christmas card was here to stay. Toward the turn of the century, a Christmas postal card fad swept the country. It lasted more than a decade; it was not until 1908 that card publishers began producing Christmas cards of the type we know today. Curiously, the great Currier and Ives lithographs depicting 19th century America did not appear on Christmas cards until well into the present century, but their popularity is unflagging.

Fortunately the cards produced have improved with the years, as they have increased in popularity. Today, more than 3,000,000,000 Christmas cards are carried by the US mails yearly.

SWIMMING POOL OPEN

Tuesday, Wednesday, Thursday, Friday
5:00 p.m. to 10:00 p.m.

DAILY ADMISSION

Employee	\$.35
Family Member (immediate)	.35
Guest	.60
(Children under 6 years old - FREE)	

SEASON TICKETS:

Employee	\$ 5.00
Family Member (immediate)	5.00
Family (Employee's immediate)	10.00



KEGLER'S KORNER

GREEN LEAGUE

After nine weeks at the top of the heap, Texiera's seemingly inviolable Fire Eaters became vulnerable to Dvorak's versatile vertiginous Vulcanite Virtuosos and dropped to second place. The following week, the Electrons and Firemen met for a showdown that promised fireworks, but when the smoke cleared, the Electrons held a big 4½ game lead. With three weeks to go before everyone starts at the bottom again, the Electrons are the ones to beat in the Green League.

Of the three Old Timers' teams, Walker's Ancient Gents are the only ones making a showing. Five games off the pace, the Old Timers I are optimistic enough to dream of lightning striking at the propitious moment and walking off with the Grand Prize.

The Gnats have come all the way from the bottom to make 4th place and have held on to it for three weeks. The rarified atmosphere was almost too much for them (the last time they made 4th place was two years ago in a six-team league) but they managed to hang on, followed closely by their mortal enemies, the Blackbirds. The Gnats and Blackbirds are expected to battle to the bitter end while enjoying their traditional role of 'Spoilers' for the Big Boys.

The Reefers have been up and down all season. They have had to do without their Peerless Leader for 4 weeks now and are hurting. Lucas and Potter are trying, but what are the Reefers without Kampe?

Standings	
Electrons	30
Fire Department	25½
Old Timers I	25
Gnats	21½
Blackbirds	20
Old Timers III	18½
Reefers	18
Old Timers II	17½

ARCHERY CLUB MEETING

There will be a meeting of the Archery Club at 7:30 p.m., Monday, December 10, in the gymnasium before the regular shooting practice. This is an important meeting and we hope all the members who can will attend. Election of next year's officers will be held.

SLO-BREAKERS AWAKE

The 1962-63 Slo-Break Basketball Season got under way Tuesday, November 20, just in time to work up an appetite for turkey day.

The Bubble Boys and Biology had little to be thankful for, as they were soundly trounced by the Phoubars and Old Timers.

The Old Timers, who are defending champions, came out on the long end of a 43-10 basting of Biology. Last year's runner-up Phoubars knocked the stuffing out of the Bubble Boys 35-11.

In the games played the following Tuesday, three of the same teams were on the court again. The results were much the same, while the victory margins were slimmer. A revitalized Bubble Boy quintet almost upset the highly touted Old Timers in a squeaker 38-31. The game was tied at the two minute mark, but the ancient ones showed superior rebounding skill as their size, or perhaps mass would be a more accurate term, proved too much for the chamberites.

The Phoubars downed a short handed Metallurgy team in the finale 31-23.

Thursday's action had A.D.D. against Applied Math. The Mathmen chalked up their first win by a 38-29 margin.

The Blue Jays had no trouble with our spirited Biologists, as they won 42-18.

Next week's action has the Old Timers vs. Metallurgy and the Bubble Boys vs. the Blue Jays. On Thursday, A.D.D. vs. Biology and the Phoubars vs. Applied Math.

Games start at 7:00 and 8:10 p.m.

STANDINGS

	Won	Lost
1. Old Timers	2	0
2. Phoubars	2	0
3. Applied Math	1	0
4. Blue Jays	1	0
5. A.D.D. Beers	0	1
6. Metallurgy	0	1
7. Biology	0	2
8. Bubble Boys	0	2

SOLUTION TO CHESS PROBLEM

WHITE	BLACK
1. B-B3 check	1. B-N2
2. R x P check	2. K x R
3. R-R1 check	3. B-R3
4. R x B mate	

FOLK DANCING

There will be folk dancing every Monday evening from 8:00 p.m. to 11:00 p.m. at the Recreation Hall.



CLASSIFIED ADS

FOR SALE

1961 VW - Reg. sedan, excell. cond. Avail. Dec. 20, 1962. G. Schaeffer, AT 6-1255 after 5:00 p.m.

ENGLISH AUSTIN - A-40 4-dr sedan. New paint, tires, battery, ring job. Four speed box, bucket seats. Really stands out. Make offer. Ext. 2325.

COLONIAL HOME - Lovely white on .8 acre rolling, wooded property in village of Shoreham ½ block from private beach. Living rm. with fire place, din. rm., den, 3 bedrms., 1 full bath, 2 lavatories, porches, full basement already divided into rooms, washer, dryer, dishwasher, refrigerator. Low taxes. SH 4-3667 after 6:00 p.m. or Ext. 2610.

SAILBOAT - 16', good cond., paddle, anchor, rigging & sails good. Asking \$175. R. Meyer, Ext. 481 or LT 9-5757.

RACING HULL - Class "C" 10 ft. All hardware for inboard engine. Engine free. Asking \$40. R. Meyer, Ext. 481 or LT9-5757.

"SEA SKIFF" - 25' 1961 Owens - 185 hp, sleeps four or more. Winter storage paid. AT 6-9225 after 6:00 p.m.

1957 JAFCO - #109, gray, inboard, \$1200 firm, AN 5-9129.

ORGAN - Wurlitzer spinet, 2 manual plus full set of factory installed chord buttons. Solid walnut Italian provincial cabinet. 1½ yrs. old. For quick sale yours for almost half original cost. Ext. 2512 or EM 3-6155.

CLARINET - B flat, good condition. Best offer. LT 9-2884.

WASHING MACHINE - G.E. fully automatic with water saver. Good cond. \$30. F. Enright, Ext. 2390 (can be seen anytime at 13 Pepper Circle East, Massapequa, AM 4-5109)

AUTOMATIC CHANGER - Garrard RC 88, 4 speed with AC stereo crystal, diamond needle, one year old, perfect! \$50. Ext. 442.

ATLAS COACH - Deluxe baby carriage, like new, asking \$25. R. Meyer, Ext. 481 or LT 9-5757.

DRAFTING INSTRUMENTS - Keuffel & Esser, excellent condition, Ext. 2709.

ROLLEIFLEX - 2¼ x 2¼ Tessar 3.5 lens. No flash synch. - Older model, but in good working condition. Ext. 2709.

SHOTGUN - 16 ga. 3 shot bolt action with polly choke and rubber stock pad. Very good condition. \$20. J. Clint, Ext. 657.

CHILD'S ROCKING TOY - Good for child up to 30 lbs. \$2. Also sturdy toilet training seat, unused, cost \$6 when new, now \$2. K. Fuchel, Ext. 2446.

TURRET MOVIE CAMERA - Wollensak 8, model 23 magazine load. Zoom viewfinder, 3 lenses, 6.5mm f 1.8, 13mm f 1.9, 38mm f 2.5. Filters & lens caps for all 3. Instruction book, five speeds; 12, 16, 24, 32, 48 fps. Single frame, run, & locked run options. Complete versatility. Perfect gift for the photobug in your family. Cost us \$114.59 in Korvette's. Asking \$50. Jack Weisenbloom, Ext. 2804.

BIKES - 18", 2 wheel, girls or boys (removable bar), good condition. 24" bike, boys, in need of repair. 26" bike, English racer, in need of repairs. Train, self-propelled, 30 ft. of circular track. Make any offer. F. Walsh, Ext. 2184.

PALOMINO HORSE - Three quarter, ten yrs. old. Sound. Tack included. Asking \$175. R. Meyer, Ext. 481 or LT 9-5757.

JOHNSON OUTBOARD - 1961 40 hp manual start short shaft, not used in 1961. 2 six gallon gas tanks. Whitney single lever control box, 2 props. Total value \$590. Asking \$350 for all. R. Meyer, Ext. 481 or LT 9-5757.

RIDE ON MOWER - 24" reel type, \$75. Calif. Redwood lawn furniture - 4' sq. table & 4 benches, \$40. Settee, chair, chaise lounge, table \$60. Playpen \$7. Baby walker, \$4. Teeter-tot, \$4. Ext. 2573. After 6:00 p.m., 751-1473.

ROLLER SKATES - Women's size 7 - white Hyde shoe. Excell. cond. Cost \$24. Sell for \$10. Dobert, Ext. 439 or 464.

ACCORDIAN - 120 bass, 2 treble shifts, white with blue, case, \$95. Dobert, Ext. 439 or 464.

DOG - Thorobred Doberman - thorobred Shepard mixture, 1½ yr. old female. Housebroken, very gentle. Comes with own house. Irv Lipton, Ext. 2430.

HI-FI AMPLIFIERS - 20 watts each (Heath Co.) with built-in pre-amplifiers. Ready for stereo use. Excell. cond. \$25 each, Ext. 301-33.

AM-TUNER - (Heath Co.) - Like new - \$20. Ext. 301-33.

SPEAKER ENCLOSURE - Bass reflex type for 8" speaker. \$2 complete. M. Greene, Ext. 779 or 2560.

VIEWER - Exakta VX 11A with penta prism, & 50mm 1.9f Westrocolor lens, \$170. 35mm 2.8f Jena Flektagon lens (semi-automatic), \$46. 135mm 315f Schneider Tele-xenar lens. Automatic. \$75, case for Tele-xenar, \$3.50. Ihagee waist level viewer, \$10. Everything for \$365. Will sell all extras separately. Will not sell camera alone unless extras are previously sold. C. Porter, Ext. 2373 or AT 4-8235.

SKATES - "Ice Wing" ladies white figure skates, size 7, worn only twice. C. Lydecker, Ext. 2180.

WANTED

TV SET - 17" or 24". H. Ikegami, Ext. 2644-2307. After 7:00 p.m. Ext. 725.

BABY SITTING - Jobs. On-site residents, experienced girl. Ext. 2629 or YA 4-3104 after 6:00 p.m.

IRONING BOARD - Any condition. G. M. Courtin, Ext. 2543 or AT 6-0336.

SNOW TIRE - 8.00 x 14, used, good cond.; or will sell mine. \$10 either way. Ext. 2325.

FOR RENT

3 BEDROOM HOUSE - Furnished, 2 car garage. Excell. location, available in Jan. \$150 per month. Madison Ave., Blue Point. EM 3-6495.

COTTAGE - Year round 2½ rooms in Westhampton. \$60. per month. Utilities not included. Elaine, Ext. 301-37, EA 9-5461 after 6:00 p.m.

FURNISHED APARTMENT - Rocky Point, waterfront with view over Sound. 15 min. from Lab. 4½ large rms. Private entrance, available Dec. 1, \$110 per mon. including heating. Petry, Ext. 2212.

HOUSE - Now to June, \$100 per mo.; 4 bedrooms, liv. rm., din., kitchen, bath, oil hot air ducts. Blue Point, call EM 3-6137.

CARPOOLS

Want to form or join car pool from South Country Shores, E. Patchogue. A. Tranis, Ext. 750.

2 man carpool looking for a third member. Deer Park area. Ext. 2558.

Want to join a carpool from the East Quogue area. E. Rogers, Ext. 301-37.

BULLETIN BOARD CLASSIFIED AD POLICY

1. Employees only may place ads in THE BULLETIN BOARD.
2. **All items advertised for sale must be property of an employee.**
3. **Real estate ads will be accepted only when they involve change of residence by an employee, and are accompanied by a statement of ownership and change of residence.**
4. No ads for business purposes will be accepted.
5. **Ads must be submitted in writing** (preferably typed) **by 3 p.m. Friday** for inclusion in the next week's newspaper. Address the ads to THE BULLETIN BOARD, 58 Brookhaven Avenue, or deliver them to the Personnel Office. Ads must contain a signature and Laboratory telephone extension. If you do not want your name to appear when the ad is printed, put it in parentheses.
6. Ads are run on a space available basis. If your ad does not appear due to space reasons, it will be held for inclusion in the next issue of THE BULLETIN BOARD.
7. If you wish to repeat an ad, it must be resubmitted.