

the Bulletin Board

VOLUME 16, NUMBER 13

Published by the BNL Personnel Office

DECEMBER 11, 1962

CHRISTMAS HOLIDAYS

Monday and Tuesday, December 24 and 25, will be observed as the Laboratory's Christmas Holidays, and the last four hours of **scheduled work** preceding Monday will be observed as a pre-Christmas half-holiday.

The Peoples National Bank facility will be open from 8:00 a.m. to 12:30 p.m. on Friday, December 21. ALL weekly paychecks will be distributed at the bank during these hours.

Because of the short work weeks due to the Christmas and New Year's Holidays, supervisors are asked to deliver weekly time cards and monthly leave records in person (do not send through mail) to the Payroll Section by 9:00 a.m. on the Wednesday following the Christmas Holiday, and to deliver weekly time cards to Payroll by the same time on the Monday preceding the New Year's holiday. The Fiscal Division will not be able to guarantee that paychecks will be available for monthly and weekly employees whose time cards or leave records are received late. Therefore, all employees and their supervisors must see that they complete their time recording and approval procedures promptly and that the cards are delivered to Payroll.

The distribution of monthly paychecks that is usually made in the morning, will not be made until after 12 noon on Monday, December 31. Any employees who wish to have the checks mailed to their home may do so by leaving their name, address and life number with the Cashier not later than December 26.

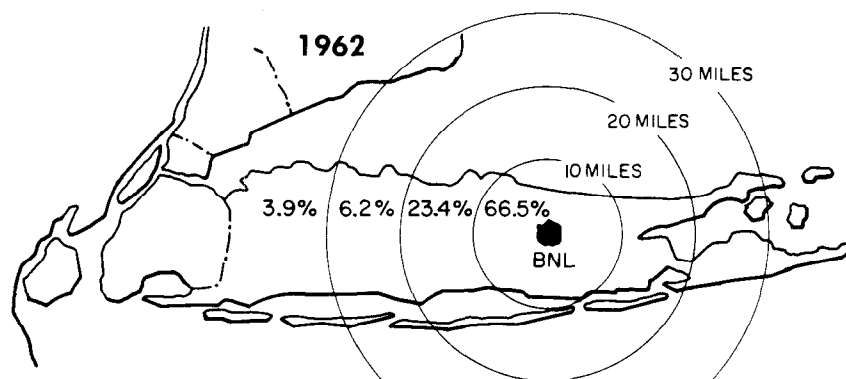
Weekly shift employees who are normally paid on Wednesday or Thursday may on the week ending December 21, pick up their checks as usual. Shift employees who will be unable to pick up their checks on Friday December 21, because of the half-holiday, may have the checks mailed to them by leaving their names, addresses and life numbers with the Fiscal Division Cashier not later than Monday, December 17. Since weekly paychecks will not be ready until Friday of both weeks following the holidays, weekly shift employees who normally receive their checks on Wednesday or Thursday may have them mailed on Friday to their home if they will leave their names, addresses

(Continued on Page 2)

BNL EMPLOYEES CENSUS OF RESIDENCE

A census of the residence of BNL employees was recently made and compared with a census made ten years ago, in 1952. The studies were made on the basis of airline miles from the West Gate of the Laboratory.

A chart showing the results of the two reports, and a map showing the 1962 results is given below.



	TOTAL EMPLOYMENT	
	10/52	10/62
0 to 10 miles	72.6%	66.5%
10 to 20 miles	21.0%	23.4%
20 to 30 miles	3.8%	6.2%
over 30 miles	2.6%	3.9%

As can be seen by the above statistics, there has been no significant change in the percentage of Laboratory employees living within the 0-10 and 10 to 20 mile radius. The number of employees living in the communities within these areas are as follows:

0 - 10 MILE RADIUS			10 - 20 MILE RADIUS		
	1952	1962		1952	1962
1. Patchogue	266	402	1. Bayport	32	85
2. Bellport	115	196	2. Riverhead	38	67
3. Moriches area	85	119	3. Sayville	35	61
4. Mastic & Mastic Beach	73	97	4. Blue Point	21	58
5. Brookhaven & Port Jefferson	32	93	5. Islip, East Islip & Central Islip	13	51
	33	92			

The greatest percent of increase in the 10 mile radius is in Shirley, which grew from one employee to eighty-one in 1962.

There has been an increase in the number of employees living within the 20 to 30 mile radius of the Laboratory. Mattituck, with nine employees in 1952, now has twenty-six. Huntington with nine, now has twenty-one. Northport and East Northport with four, now have sixteen. West Islip with none in 1952, now has fourteen employees.

In the over 30 mile radius there also is an increase. While many communities are represented in this area with one, two, three or four employees, the greatest increase is in Sag Harbor which now has nine employees as compared to one, ten years ago.

Our long distance champions include commuters from Montauk Point, Kew Gardens, Queens Village and Flushing.

AEC OFFICE GIVES AWARDS TO THREE EMPLOYEES

Mr. E.L. Van Horn, Manager of the U.S. Atomic Energy Commission's Brookhaven Office, recently presented awards to three employees. Length of service awards were presented to Paul B. Klevin and John M. Kay, and a suggestion award was presented to Ruth C. Neuss.

Mr. Klevin, Operations Division, received a service pin for completing 20 years of Federal service on May 31, 1962. Mr. Kay, Finance & Administration Division, received a service pin for completing 10 years of Federal service on May 26, 1961. Mrs. Neuss, Engineering and Construction Division, received an award for the suggestion of a more efficient procedure for the submission of certified payrolls by construction prime contractors.

SPECIAL CHRISTMAS DINNER

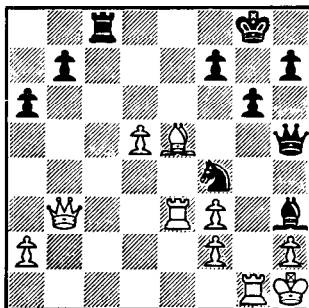
A special Christmas dinner will be served at the Cafeteria on Tuesday, December 18, between the hours of 11:30 a.m. and 7:00 p.m. There will be a choice of a complete ham or turkey dinner for a special price of \$.99.

MAILING CHRISTMAS CARDS

Postmaster Garrett of the U.S. Post Office requests that you separate your Christmas cards into boxes or bundles according to city or state destination before bringing them in to be mailed.

CHESS PROBLEM

White is well guarded at all points. So you can count yourself well satisfied if you can work out a win at all. Or who can say? It may be just such a position as this that leads to a mate. So go ahead and call it what you see it. It is Black's move and win. Answer elsewhere in this week's BULLETIN BOARD.



Christmas Holidays cont'd.

and life numbers with the Cashier not later than Wednesday, December 26, and Wednesday, January 2.

TWENTY-SECOND BROOKHAVEN LECTURE

BY HENRY QUASTLER - Biology Dept.

Title:

"CHEMICAL COMMUNICATION SYSTEMS
IN THE CELL"

Lecture Hall - 8:00 p.m. - Wed., Dec. 12

A buffet supper (\$2.75) will be served at the Brookhaven Center before the lecture, beginning at 6:00 p.m. Reservations should be made at least one day in advance by calling Ext. 2302 before 5:00 pm, or Ext. 2453 in the evenings.

Refreshments will be available in the Exhibit Hall following the lecture.

BERA FILM SERIES

"THE COUSINS"

Thurs., Dec. 13 - 8:30 p.m. - Lecture Hall

Claude Chabrol, former critic of *Cashiers du cinema*, now a leading new wave film-maker, has written and directed the much talked-about and written-about ultra-sophisticated corruption of the traditional tale of the country mouse and city mouse, starring Gerard Blain, Jean-Claude Brialy, and Juliette Mayniel. "Clear-eyed, candid and cruel . . . beautifully played, hard to forget . . . one of the year's ten best foreign films."

NEW YORK TIMES

Chabrol once wrote an exhaustive study of Hitchcock and his films abound with Hitchcock-like touches . . .

FILMS IN REVIEW

"A startlingly vivid, frequently shocking image of the face of the 'beat generation . . ."

Awarded First Prize, Berlin Film Festival.

BNL COMMEMORATES START-UP OF FIRST NUCLEAR REACTOR

A symposium entitled "Twenty Years of Nuclear Progress" was held at BNL on Saturday, December 1, and was enthusiastically attended by seventy-five members of the Suffolk County Science Teachers Association and other interested individuals. Some of the participants came from as far away as Washington, D.C. to take part in the day-long activities. The symposium, which was part of a nation-wide observance of the twentieth anniversary of the start-up of the world's first nuclear reactor in Chicago on December 2, 1942, by Enrico Fermi and his associates, reviewed the tremendous effects of the rapid development and use of nuclear reactors upon all fields of science.

SOCIAL SECURITY DEDUCTIONS INCREASE

Effective January 1, 1963, the Social Security Law requires an increase in your Social Security deductions, to 3½% of the first \$4,800 earned. This will mean an annual deduction of up to \$174, instead of \$150 under last year's maximum rate. The Laboratory, of course, must increase its contribution to match its employees', dollar for dollar.

The change in the Social Security Law was passed by Congress in the summer of 1961, when taxes on both employees and employers were raised in order to make increased Social Security benefits possible.

Booklets which describe the social security law in more detail are being distributed this week to all employees.

DR. TELLER SPEAKS AT BNL

Dr. Edward Teller gave a talk to a capacity crowd on Tuesday, December 4, in the Lecture Hall. His subject was the Plowshare Program, which is directed toward the development and use of nuclear explosives for peaceful purposes. Dr. Teller, Professor at Large, University of California, recently received the Enrico Fermi Award for his contributions to the military and peaceful development of atomic energy in the United States.

Arrivals and Departures

WELCOME TO BNL

AGS	
Frank J. Lotito	Ext. 2410
George W. Speidell	2410
BIOLOGY	
H. Robert Horton	373
INSTRUMENTATION & HEALTH PHYSICS	
William J. Johnson	588
MEDICAL	
Barbara R. Brezisky	2907
NUCLEAR ENGINEERING	
William C. Crockett	
Joseph J. Fedelem	
PHYSICS	
John H. Rapp	
Raymond Weymer	686

RECENT DEPARTURES

NUCLEAR ENGINEERING
Francis X. Nichik

FOLK DANCING

There will be folk dancing every Monday evening from 8:00 p.m. to 11:00 p.m. at the Recreation Hall.

BRIDGE

The results of last week's master point game were:

N-S

1. Lawrence & Wagner
2. Mr. and Mrs. Schermer

E-W

1. Reilly & Schmaeler
- 2/3. Cockrell & Shotkin
- 2/3 Mr. and Mrs. Sternheim

The N-S winners produced a good bidding sequence to reach 4S on the hand below, while the other teams played in 3NT.

N (LAWRENCE)

10 8 6

K 6

A K 8 7 2

Q J 6

K 4

Q J 10 3

J 10 9 6

9 5 4

A J 5

9 7 5 4

5 3

K 10 3 2

S (WAGNER)

Q 9 7 3 2

A 8 2

Q 4

A 8 7

N opened 1D, S responded 1S, and N bid 1NT. Now S bid 2H. In the method of bidding used by this partnership, this bid could not show a heart suit. When responder has both a heart and a spade suit, he must always bid hearts first regardless of which suit is longer. Thus the 2H bid was just a forward-going bid asking for more information about opener's hand. N showed his 3 card spade support and his partner bid game.

After the hand Les Lawrence made this point, "When you have a 5-3 major suit fit, and the suit is solid, 3NT will often be superior to the suit contract. However, when you are missing the top cards in that suit, game in the major is almost always the better spot."

The Open Pairs Club Championship will be held on January 3, and 17.

VOLLEYBALL LEAGUE OPENS

Rules, regulations and schedules have been completed and the volleyball season gets underway officially this week. The League will play a three round tournament of fifteen weeks ending in March. Five departments have entered, and the competition will feature two three game matches on Tuesday evenings, at 5:15 p.m. each week, in the Gymnasium. The season will be played

KURT JELLETT — FISHERMAN OF THE YEAR

Kurt Jellett, of AGS, captured the all-around fishing honors this season and became BERA's "Fisherman of the Year." This title is calculated by a point system which awards points for the individual's highest entry in each species. The species total is then added to get the total point accumulation. Among Kurt's catches were listed Blackfish, Flounder, Blue Fish and Striped Bass. Jellett has served on the Fishing Committee since its inception a few years back. I guess this newly acquired title automatically makes him Chairman of next year's committee.

Next week a trophy will be awarded to Kurt, and to the other contest winners as follows:

Highest Single Entry (Bonita, 7 lbs., 588 pts.) CARL CANTERA

Second Highest Entry (Blue, 9 lbs. 12 oz., 487 pts.) CHARLES GERLE

Third Highest Entry (Porgie, 2 lbs. 4 oz., 450 pts.) WILLIAM GLYNN

This month's award for his 8 lb. 12 oz. Bluefish, went to John Tagliavia of Mechanical Engineering.

in two halves, with the winner of each competing in a playoff for the Championship on April 2.

Entries are:

BUBBLE CHAMBER — Captain D. David

CHEMISTRY — Captain Y. Chu

COSMOTRON — Captain G. Levine

MEDICAL — Captain R. Fairchild

PHYSICS — Captain M. Sternheim

RECREATION HOLIDAY SCHEDULE

GYMNASIUM - RECREATION BUILDING - Closed
the week of December 24.

SWIMMING POOL - Open Friday, December 21. No swimming lessons.
Closed - week of December 24.

Classes - The remaining classes are scheduled as follows:

ADULT - Dec 12 (Wed.), 18 (Tues.), 19 (Wed.).

CHILDREN - Dec. 14 (Fri.), 20 (Thurs.), Jan. 4 (Fri.).

All facilities will resume normal schedules on Wednesday January 2.

COOKING EXCHANGE GROUP

The Cooking exchange Group will meet Wednesday, December 19, from 3:00 p.m. to 5:00 p.m. in the Recreation Building. Baby-sitting is available at 50 cents per mother. Call Mrs. Brishani, Ext. 719.

SOLUTION TO CHESS PROBLEM

- | | |
|----------------------|---------------------|
| 1. Black mates after | 1. B-N7 check |
| 2. R x B | 2. R-B8 check |
| 3. R-N1 | 3. Q-N4 |
| 4. Q-Q1 | 4. R x Q |
| 5. R/2-K1 | 5. R x R etc., etc. |

CLASSIFIED ADS**FOR SALE**

1957 CHEVROLET - Bel Air 2 dr. hard top with 1962 - 327 cu. in. engine with 1500 miles, two 4-barrel carbs., standard shift & overdrive, 4.11:1 rear. Ext. 41 or 2474.

1960 PONTIAC - Ventura Vista sedan. A.t., p.s., p.b., r&h, w.w. Like-new, 16,000 miles. \$1695. GR 5-5634 after 7:00 p.m.

1938 PLYMOUTH - In excellent cond. Low mileage. 5 brand new tires. \$225. Ext. 301-38 or AT 9-1865 after 6:00 p.m.

1951 FORD - V-8 2-dr., r&h., std. trans., good cond. GR 5-5894.

1954 FORD - 8 cyl., 4 dr., good cond., \$75. Tom Moffett, Ext. 627, or 941-4137 after 6:00 p.m.

1951 PLYMOUTH - \$30. EM 3-6869.

1961 VW - Reg. sedan, excell. cond. \$1300. Avail. Dec. 20, 1962. RCA 24" TV set and ant. Like new. \$180. Redwood lawn table, \$4. Storage cupboard - 36"x18". G.W. Schaeffer, Ext. 384 or AT 6-1255.

COLONIAL HOME - Lovely white on .8 acre rolling, wooded property in village of Shoreham 1/2 block from private beach. Liv. rm. with fire place, di. rm., den, 3 bedrms., 1 full bath, 2 lavatories, porches, full basement already divided into rooms, washer, dryer, dishwasher, refrig. Low taxes. \$25,000. SH 4-3667 after 6:00 p.m. or Ext. 2610.

KAYAK - With seats & paddle, new canvas. \$35. C. Reed, Ext. 2182.

25' SEA SKIFF - 1961 Owens 185 hp, less than 75 hours on motor. Sleeps 4 or more. Winter storage paid. AT 6-9225 after 6:00 p.m.

1960 OWENS - Flagship Family Cruiser - 25'. Perfect cond. 185 hp, hardtop. Sacrifice for \$3000. C. Sipe, Ext. 301 or MA 9-4592.

14' THOMPSON - 30 hp Evinrude motor, home-made trailer, controls & wheel. Good skiing boat, 30 m.p.h. Ned, Ext. 2411.

16' SAILBOAT - Good cond. Paddle, anchor, etc. \$175. R. Meyer, Ext. 481 or LT 9-5757.

ICE SKATES - Boy's figure, size 6 & boy's hockey ice skates, size 3. Boy's jacket and pants size 10-12 & winter jacket size 12. GR 5-5894.

FIGURE SKATES - Girls white, size 3, \$3. Boy's hockey skates, size 4, \$3. Both used one season. EM 3-6869.

HOTPOINT DISHWASHER - Needs impeller, otherwise in good cond. Any offer acceptable. M. McKeown, Ext. 2307.

MEN'S SKATES - Size 7, like new. Worn only twice, too small. Make offer. AT 6-0372 or Ext. 639.

BABY CARRIAGE - When new over \$30, good cond. Do not plan further use. Phil, Ext. 2339.

PIANO - Richmond upright. Works good, needs new irory. R.B. Maust, Ext. 454.

PLAYER PIANO - Hardman "Duo" mahog., 4 years old. \$600. AT 6-0606.

32 CAL. - Like new. Permit req'd. \$10. R. Meyer, Ext. 481 or LT 9-5757.

PALOMINO - Three quarter, 10 years old. Sound, English saddle, bridle, all for \$175. R. Meyer, Ext. 481 or LT 9-5757.

JOHNSON OUTBOARD - 1961 40 hp manual start, short shaft, not used in 1961, Whitney single lever control box, 2 props, two 6-gal. gas cans, all like new. Total cost, \$590. Selling for \$350. R. Meyer, Ext. 481 or LT 9-5757.

BABY COACH - Atlas carriage. Very good cond. Asking \$25. R. Meyer, Ext. 481 or LT 9-5757.

CHORD ORGAN - Electric, excellent cond. \$35. Ext. 2578.

MICROSCOPE - Leitz SM type, 3 objectives practically unused. \$350. (New price \$560.) H.R. Lutz, Ext. 466 and 507.

2 WHEELS - 6-70-15, \$5. GR 5-5428.

RCA COMBINATION - TV - radio - phono console. 14" TV, new picture tube. AM radio. 2 record changers, one 45 rpm, one 78 - 33 rpm. All in perfect cond. Mahog. cabinet with doors. \$65. R. Hildenbrand, Ext. 777.

CAMERA - Exakta VX 11A with Penta-prism Viewer and 50 mm 1.9f Westrocolor Lens (fully automatic) \$170. 35 mm 2.8f Jena Flektogon Lens (semi-automatic) \$46. 135 mm 3.5f Schneider Tele-xenar Lens (fully automatic) \$75. Case for Tele-xenar \$3.50. 400 mm 5.5f Telemegor Lens (non automatic) \$67.50. Ihagee waist level viewer \$10. Everything for \$365. Will sell extras separately. Will not sell camera alone unless extras are previously sold. C. Porter, Ext. 2373 or AT 4-8235.

ICE SKATES - Girls size 2. One antique platform rocker, black print upholstered. See W. Chornoma at Cabinet Shop or call EA 5-0567.

WESTINGHOUSE REFRIGERATOR - 6 cu. ft. Good cond., \$15. MacDougall at Ext. 776 or 2315.

SKATES - "Ice Wing" ladies white figure skates, size 7, worn only twice. C. Lydecker, Ext. 2180.

TYPEWRITER - Remington Rand Quiet-riter. 1958 deluxe portable with case, key and manual. Seldom used; in excell. cond. Asking \$65. Noel, Ext. 574.

COAT - Tuxedo style beaver with leopard down the front. Quality fur. Size 16. \$75. Ext. 454.

REFRIGERATOR - 11 cu. ft. Crosley Shelvador, very good cond., \$50. L.C. Smith standard typewriter, easy spin dry washing machine and power lawn mower - needs some work - no reasonable offer refused - call G. Kapner, Ext. 2231 or AT 1-7464 after 6 p.m.

PISTOLS - 1 Smith & Wesson model 41, 22 cal. Target Pistol with extra barrel & clip. Excellent condition - \$105. One Iver Johnson Target Pistol with holster - \$25. J. Rothmann, Ext. 2672.

PARTY DRESS - Sleeveless black velvet, size 9. Blue tulle evening gown and stole, size 11. Boosey & Hawkes B flat clarinet & case, good cond., \$75. RCA Victor, 45 speed record player with records. Old Philco combination radio and record player, plays one at a time. Andrew Olsen, AT 6-0376.

CHICAGO ROLLER SKATES - Black shoe, size 10. Excell. cond. \$10. C. Brewster, Ext. 2582.

WANTED

BABY SITTING JOBS - Reliable 16 year old. After 4:30 week-days or anytime weekends. Flannery, EM 3-6061, Ext. 301, or Ext. 105.

WORLD WAR II PIECES - German medals, orders & decorations. Please describe items. Box 403, Brookhaven.

SLIDE TROMBONE - Tenor or bass, with case and in good cond. Bob Smith, Ext. 2806, 8:30 to 5:00 p.m.

AMPLIFIER - 12 watt mono., also record player (Garrard 3hf vintage). R.B. Maust, Ext. 454.

RACING BOATS - Super Sailfish (14'), Blue Jay, or CC. Must be structurally sound: age and appearance unimportant. Ext. 379.

USED CAR - Good cond., \$300. Chandrasek-haraiah, Bid.815, Ext. 2527.

BABY'S FURNITURE - Crib and dresser. Ext. 2564, P. Corey.

FISHING ROD - Salt water, in fair cond. at a fair price. Ext. 2564. P. Corey.

INFORMATION - Will the person who ordered a package from Saks Fifth Avenue addressed only Brookhaven National Lab. please call Personnel Services. Ext. 2107.

HOMES - For three male kittens, black & gray in color. YA 4-6139.

ISSETA - Wish to contact owners concerning replacement parts. Paul Pion, Ext. 2687.

ICE SKATES - Boy's size 2, 5 & 8. Pion, Ext. 2687.

GIRL'S BICYCLE - 20", good cond. Ext. 2375.

CARPOOLS

One congenial rider desired for existing carpool emanating from Exit 32 on Southern State Parkway (Farmingdale). Ext. 2114.

FOR RENT

BELLPORT VILLAGE - 2½ rooms, fully furnished apartment, private entrance, garage and utilities included in rent of \$110. per mo. Lease not required. Ext. 2497 or AT 6-8850 evenings.

FURNISHED COTTAGE - Year round 2½ rms. in Westhampton. \$60. per mo. Elaine, Ext. 301-37 or EA 9-5461 after 6:00 p.m.

PORT JEFFERSON - 3 rooms, all utilities except gas for cooking purposes. \$70. per mo. and security. HR 3-2305.

2 BEDROOM HOUSE - Furnished, 1 car gar., available immediately, rights to private beach, Miller Place. HR 3-0039 evenings.

LOST

BIBLE - Call Personnel Services, Ext. 2107.

BULLETIN BOARD CLASSIFIED AD POLICY

1. Employees only may place ads in THE BULLETIN BOARD.
2. **All items advertised for sale must be property of an employee.**
3. Real estate ads **will be accepted only when they involve change of residence by an employee, and are accompanied by a statement of ownership and change of residence.**
4. No ads for business purposes will be accepted.
5. **Ads must be submitted in writing** (preferably typed) **by 3 p.m. Friday** for inclusion in the next week's newspaper. Address the ads to THE BULLETIN BOARD, 58 Brookhaven Avenue, or deliver them to the Personnel Office. Ads must contain a signature and Laboratory telephone extension. If you do not want your name to appear when the ad is printed, put it in parentheses.
6. Ads are run on a space available basis. If your ad does not appear due to space reasons, it will be held for inclusion in the next issue of THE BULLETIN BOARD.
7. If you wish to repeat an ad, it must be resubmitted.