

the Bulletin Board

VOLUME 16, NUMBER 19

Published by the BNL Personnel Office

JANUARY 29, 1963

NAVY HONORS THE LATE CAPTAIN CONRAD

Laboratory old-timers will no doubt be interested to learn that the first U.S. Navy ship to be constructed especially for oceanographic research has been given the name ROBERT D. CONRAD. The late Bob Conrad was one of the first members of the senior staff at Brookhaven; before his untimely death from leukemia on July 26, 1949, he was Assistant Director for Planning, and for a while also served as Acting Chairman of the Medical Department, pending the appointment of a permanent Chairman.

Before joining the Laboratory in its formative days, Captain Conrad served in the Navy, and was instrumental in formulating policies and initial research programs for the Office of Research and Inventions, which in 1946 became the Office of Naval Research.

The 209-foot ROBERT D. CONRAD, following her launching at Jacksonville, Florida, in May, 1962, was manned by a civilian crew and scientists under a contract between the Lamont Geological Observatory of Columbia University and the Office of Naval Research. She will conduct a number of basic and applied oceanographic research projects, including studies of the effects of the ocean environment on sound transmission and on scientific and naval instruments. She will also carry out investigations in oceanic areas of naval interest.

BATTERIES

Popular size batteries (for games, toys, flashlights and transistor radios, etc.) – sizes D, C, and AA have been added to the discount sales items offered to employees daily 9:00 a.m. to 1:00 p.m. by Personnel Services at the Recreation Office, 3 Center Street, Ext. 2808. Popular size transistor batteries will be available late this week.

FOLK DANCING

There will be folk dancing every Monday evening from 8:00 p.m. to 11:00 p.m. at the Recreation Hall.

ST. PATRICK'S DANCE

Friday, March 15

BERA FILM SERIES

"Zero for Conduct" and "L'Atalante"

Thurs., Jan. 31, 8:30 p.m. - Lecture Hall

BERA is proud to present this amazing double feature by Jean Vigo at his finest. Both "Zero for Conduct" and "L'Atalante" have been re-released with new prints made from newly imported masters acquired in Paris.

"Zero for Conduct"

This film is a psychological tour-de-force. Its theme of life in a French school for boys and their eventual revolt is filled with warm humor and a profound feeling for the realities of childhood. The film, Vigo's first full-length feature and an amazing work, was made in 1933 and banned in France for 16 years.

"L'Atalante"

"L'Atalante" is a tender, ironic story of a young married couple who start their wedded life on a barge on the Seine. The film has a rich vein of humor, lyric fantasy and naturalism of character flowing through it.

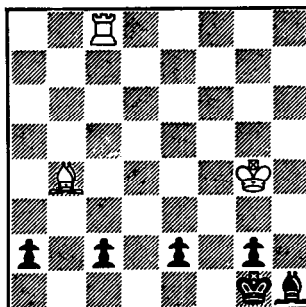
VISITORS

On Thursday, January 31, about 50 people from the American Institute of Electrical Engineers will tour BNL.

The International Institute of Nuclear Science and Engineering from Argonne National Laboratory will tour the Laboratory on Friday, February 1.

CHESS PROBLEM

In this week's problem, it is White's move and win. Here Black has not one, but four Pawns a move away from Queening, and still White has a chance to win. Could you? Answer elsewhere in this week's BULLETIN BOARD.



OPERA SCHEDULE

February 25 BALLO
26 TURANDOT
27 SONNAMBULA
28 TRAVIATA
March
1 FIDELIO
2 CHENIER (Mat.)
ARIADNE (Eve.)
4 SONNAMBULA
5 TURANDOT
6 FIDELIO
7 SONNAMBULA
8 ARIADNE
9 BARBER OF SEVILLE (Mat.)
TRISTAN (Eve.)
11 FIDELIO
12 TURANDOT
13 OTELLO
14 SONNAMBULA
15 BALLO
16 TRAVIATA (Mat.)
BORIS (Eve.)
18 OTELLO
19 SONNAMBULA
20 BORIS
21 TRISTAN
22 TRAVIATA
23 OTELLO (Mat.)
SONNAMBULA (Eve.)
25 BORIS
26 BARBER OF SEVILLE
27 BALLO
28 ADRIANA
29 BORIS
30 SONNAMBULA (Mat.)
OTELLO (Eve.)

CAFETERIA SPECIAL

This week, Thursday, January 31
Tomato or Apple Juice

Tomato or Apple Juice
Celery, Olives and Tossed Salad

Roast Turkey
Cranberry Sauce
Sweet Potatoes, Peas & Mushrooms
Coffee or Milk
Mints and Nuts
\$0.99

CAFETERIA BULLETIN BOARD

Before any announcements, notices or posters are placed on the Cafeteria bulletin board, they must have prior approval by the Personnel Office, Ext. 396 or 2375.

CAFETERIA HOURS CHANGED

Effective Monday, February 4, the Cafeteria, Snack Bar and Brookhaven Center hours will be as follows:

Cafeteria	
7:00 a.m. to 2:00 p.m.	Mon. - Fri.
5:00 p.m. to 7:00 p.m.	Mon. - Fri.
Snack Bar	
2:00 p.m. to 4:30 p.m.	Mon. - Fri.
9:00 a.m. to 5:00 p.m.	Sat. - Sun.
Vending Machines	
4:00 p.m. to 7:00 a.m.	Mon. - Fri.
24 hours service - Saturdays, Sundays and Holidays.	
Center	
5:00 p.m. to 12:00 midnight Sat. - Thurs.	
Closed Fridays	

BOWLING CALENDAR

Week of February 26 -
 Special Event - Team prize
 March 30 - Scotch Doubles Tournament
 Week of April 15 -
 Sweepstakes - League Roll-offs
 April 25 - BNL Championship at
 Port Jeff Bowl
 May 3 - Annual Awards Party

SKI CLUB

There will be a Ski Club meeting on Monday, February 4, at 8:00 p.m., in the Recreation Building. Everyone is invited to come out and help us plan another ski trip.

TABLE TENNIS TOURNAMENT

Once again it's time for our annual Table Tennis Tournament. The competition to determine our 1963 Champions will begin within the next few weeks.

The contest will be of a simple elimination nature, requiring participants to play one match a week at a mutually agreed upon time. Contests will be held in both singles and doubles if enough entries are received. Awards will be presented by B.E.R.A.

A fifty cent entry fee must accompany your registration for each tournament. Entries are now being accepted at the Recreation Office, 3 Center Street. For additional information call Ext. 391.

Deadline February 1

THE BNL THEATRE GROUP
 Will Present
"A VISIT TO A SMALL PLANET"
 February 7, 8, and 9

Arrivals and Departures

WELCOME TO BNL

APPLIED MATHEMATICS	
Kathleen F. Peters	Ext. 2589
BIOLOGY	
Nancy E. Feuerstein	367
CENTRAL SHOPS	
Salvatore Galante	573
Robert Shirley	566
COSMOTRON	
William Chu	746
FISCAL	
Emilie V. Kohut	2390
MECHANICAL ENGINEERING	
Bruce W. Bigelow	
MEDICAL	
John J. Elmore, Jr.	2924
Esther Graham	301
William S.S. Ogden	2919
Dorothy Mazurkiewicz	301
NUCLEAR ENGINEERING	
Markley H. Flom	
James W. Sutherland	
PHYSICS	
Robert N. Persson	
PLANT MAINTENANCE	
Edward C. Iberger	2159
SUPPLY & MATERIAL	
Richard A. Dickhoff	2704

RECENT DEPARTURES

AGS	
Theodore Constant	
MEDICAL	
Wenceslao Calvo	

BASKETBALL

Shrewd defenses seem to have continued from last week as the Phoubars, having been held to a 15-15 half-time tie, came out with a pressing man-to-man battle and found a well deserved 35-26 victory over the Bubble Boys. In the second encounter, the Old Timers ran up an impressive 48 point score and gained their first notch of the second half, at Biology's expense. The losers had smiles as they cracked the 20 point mark for the first time in ages.

As predicted, A.D.D. was really wielding their machetes and took the Blue Jay's piece of cake with a 27-21 victory. This team is tough, with Zguris hitting jumpers and Sheehan hitting the boards.

Speaking of machetes and boned-up elbows, Metallurgy and Applied Math had a go at each other Thursday. Nelson hit everything he threw, and it proved to make the difference in a 35-28 Applied Math victory.

BRIDGE CLUB CHAMPIONSHIP

Les Lawrence and Sandy Wagner successfully defended the open pair club championship that they won last year. The leading finishers were:

1. Les Lawrence & Sandy Wagner - 92½
2. Lee Gaynor & Ellie Hedges - 76½
3. Mr. & Mrs. Sampson - 76
4. Jack Tillinger & Bob Dvorak - 70½
5. Mr. & Mrs. Schermer - 66

There were many good plays made during the tournament such as Mr. Sampson's imaginative card reading against the ultimate winners, which brought home a 6S contract that failed at every other table.

The winners showed interesting bidding technique in reaching 3NT on a hand that was played at 4S at every other table.

	N (Lawrence)	
	A K 10 x x x	
	K x	
	K 9 x	
	9 x	
	W	E
x		x x x
Q 10 9 8 x		x x
10 x x		A Q x x
J x x x		A x x x
	S (Wagner)	
	Q J x	
	A J x x	
	J 8 x	
	K Q 10	

Lawrence opened 1S and his partner chose to respond 2C. With his 4-3-3-3 shape, he liked the idea of playing 3NT rather than 4S, but didn't like to bid 2NT with no diamond stopper. Also, if partner held A-10 or K-10 in diamonds, the hand would play better from the other side of the table. Lawrence, being too strong for a 2S rebid, bid 2NT and was raised to three. The same tricks were available in no-trump as in spades; the extra 10 points earned top on the board for the winners.

The monthly master point game will be held Thursday, January 31, at 7:45 p.m.; in the Recreation Hall. Everyone is invited.

Teams are forming now for the team-of-four championship to be held on February 14. If you wish to register your team for the event, or need another pair to join you and your favorite partner, call Bob Dvorak or Sandy Wagner on Ext. 618.

COMING

The TRIO DI BOLZANO will be at BNL on Tuesday, February 26. Watch THE BULLETIN BOARD for further details.

VISIT TO A SMALL PLANET

ATTENTION EARTH PEOPLE

Presented by the BERA THEATRE GROUP

Directed by GINNIE SAYRE

ASTRAL VISITOR EXPECTED AT BNL

February 7, 8, 9, 1963

Produced by PERK STOENNER AND GERT FRIENDLANIER



ADMISSION

- \$1.00 - Employee-Family member**
- \$1.25 - Guests**
- \$0.50 - Children (Under 18)**

Ginnie Sayre is seen above (right picture) putting some of the cast (left to right, Peggi Goldberg, Roger Galvin and Ed Sayre) through their paces at rehearsal of BERA Theatre Group's next presentation, "Visit to A Small Planet." The group has spent many hours designing and building sets, painting scenery, assembling props, fitting costumes and studying lines.

The excitement and confusion (and the fun) begin when a space ship carrying an astral visitor (Ed Sayre) lands on the lawn of the fashionable Virginia home of TV announcer Roger Spelding (Dan Schaeffer). General Tom Powers (Harold Schwarz) who is in charge of the expected "invasion," thinks he has the situation well in hand, but becomes quite bewildered and confused when he tries to match wits with this sharp visitor from outer space. The shenanigans of the Speldings' teen-age daughter with her farmer boy friend add more merriment to this three-act comedy.

Also in the cast are Peggi Goldberg as Ellen Spelding, Roger Galvin as Conrad Mayberry, the farm boy, Hildred Blewett as Reba Spelding, Bill Hilger as a military aide, Norbert Porile as Delton 4 (another space visitor). Spice, a feline ingenue, makes her debut in this play. Two TV technicians are played by Cyril Woodburn and Manny Hillman.

8:30 p.m.

THEATRE

8:30 p.m.

Tickets are now on sale in many departments. Contact one of the following people or Noel Corngold, Ext. 665.

- MARY SEMERJIAN - AGS
- ELLIE MURGATROYD - Administration
- GEORGE SABINE - Recreation
- DONALD WIMBER - Biology
- EDNA HODGES - Biology
- ED SAYRE - Chemistry
- GERT FRIENDLANDER - Chemistry
- Mildred Isold - Cosmotron
- MARIAN CHILDRESS - Graphic Arts
- HELEN COOKE - Instrumentation
- RITA STRAUB - Medical
- MARIE FOLLENIOUS - Medical
- KATHY GIAMBALVO - Nuclear Engineering
- PAT TOWEY - Physics
- DEDDIE BLUHM - Physics
- JEANNE BALDWIN, Reactor
- ROBERT FUCHS - Reactor
- PAT LAWLESS - Women's Dorm (Upton)

B.N.I.V.B.I.

On January 15, Chemistry ran over Physics, winning three out of three games. The Cosmotron took two out of three from Medical.

Cosmotron forfeited their match to Chemistry on January 22, and Medical took two from the Bubble Chamber 21-

7, 21-7, and lost one, 14-21.

With one week remaining in the first round play, the standings are:

	Won	Lost
Chemistry	12	3
Cosmotron	10	5
Medical	10	5
Bubble Chamber	3	12
Physics	1	11

CARPOLS

Paying rider needs transportation from Greene Avenue, Sayville, Ruth Kelly, Ext. 2234.

Established carpool from the Massapequa-Farmingdale area or points west is looking for fifth member. Lewis Schatzer, Ext. 2475 for details.

CLASSIFIED ADS

FOR SALE

1961 FORD - Country Squire, desert gold, r&h, w/w. \$1800. W. Stuckert, Ext. 639, or MO 5-9320 evenings.

1960 LARK - 6 cyl, 2 door, Ext. 454

1956 FORD STATION WAGON - V8, auto. trans, r&h, padded dash, 2 extra wheels & tires, excell. running cond., one owner. \$400. or best reasonable offer. Ext. 2375.

1958 CITROEN ID 19 - 4 dr. sedan, clean and in good mech. order, 50,000 miles. Orig. owner. Ride in real comfort with the famous Citroen air-oil suspension. Call C. Williams, Ext. 380 or AT 6 0130.

1959 OPEL - Good running cond., 27 mpg, body good, r&h. Best offer. Leaving country first week in February. Ext. 2388.

1956 AUSTIN HEALEY - Black, wire wheels, excell. cond., \$950. Russ, Ext. 2585.

1958 LINCOLN PREMIER - Full power, 36,000 miles, excell. cond. \$950. Ext. 455 or JU 4-5919

1956 FORD - Green, std. trans., r&h, in good cond. \$325. No reasonable offer refused. S. Bozzo, Ext. 2780 or Ext. 537 after 5:30 p.m.

1951 PONTIAC - Eight, good running cond., 3 new tires, 2 snow tires, new battery. Original owner and only driver. Asking \$150. Ext. 322

1958 OPEL - Station wagon, in good cond. \$400. R. Majestic, Ext. 686.

1961 FORD - V8, 4 dr., ranch wagon, r&h, std. shift, one owner, 15,000 original miles. Joe Bauernfiend, Ext. 772.

RANCH HOUSE - 3 bedrooms, attached breezeway and garage, located in Bohemia. Convenient to highways and stores, house is equipped with oil-hot air heating system and combination storm-screens for windows and doors. Black-topped driveway. House may be seen by appointment only. Gil Pitcher, Ext. 2204 or LT 9-3689 after 6:00 p.m.

COLONIAL HOME - Lovely white on .8 acre rolling, wooded property in village of Shoreham 1/2 block from private beach. Living rm. with fire place, din., den, 3 bedrooms, 1 full bath, 2 lavatories, porches, full basement, already divided into rooms, washer, dryer, dishwasher, refrigerator. Low taxes. \$25,000. SH 4-3667 after 6:00 p.m. or Ext. 2610.

TYPEWRITER - Underwood portable, \$30. Ext. 2672.

SAILBOAT - 17ft. National Class centerboard sloop, 2 suits of cotton sails, stainless steel

rigging, fresh coat of paint, needs second coat (paint provided at no extra cost). Save \$75. in this pre-season clearance (owners bit off more than they can chew by buying second sailboat. \$425. Enid, Ext. 373 or BR 3-2250.

GARDEN TRACTOR - Large tires & reverse with snow plow, sickle bar & lawn mower. Also belts and extras. \$115. Ron, Ext. 464.

SLIDE PROJECTOR - Argus PBB 200 in carrying case, also 5 metal slide boxes, each hold 150 slides, all in excell. cond. \$20. takes all. Carl Wingard, Ext. 2704.

VACUUM CLEANER - GE Roll-easy, 3 yrs. old, in working cond. TV - Motorola, 17" many years old but working. Any reasonable offer accepted. Joe Jach, Ext. 634 or AT 6-9260.

BOOK OF KNOWLEDGE ENCYCLOPEDIA - 1958 edition, with two annual supplements, perfect cond. Original cost \$150. Will sell for \$70. GR 5-9254.

ICE SKATES - Boy's hockey, size 5, \$5. Boy's hockey, size 6, \$6. Ladies figure skates, size 6, \$6. Like new. C. Davis, Ext. 576 or 2717.

BEDDING - (Sealey) posturepedic, box spring, mattress, like new, original cost \$150. Sacrifice. AT 9-0687.

ZENITH TV - Console model, two picture tubes, perfect condition and reception, first come first served, \$25. J.P. Palmer, Ext. 542.

SKI PANTS - Men's blue stretch, size 34R, \$16. Also: lined after ski boots, size 8-8 1/2. E. Raka, Ext. 310.

ELECTRIC IRONER MANGLE - Maytag, 2 speeds, 2 heating elements, delux model, \$30. or best offer. Ext. 311 or LT 9-5469.

PICK UP TRUCK - 1953, GMC, mech. good., with snow tires, \$150. Ext. 548 or SH 4-3926 after 6:00 p.m.

HANDY TALKIES - 2 BC 611, with instruction and maintenance book. \$20. Transistor checker, Sencore, \$12. Sonor model "E" CB transceiver, 6 sets XTALS, 12-110v, \$125. Poly Comm. - PCN12, 4 sets XTALS, 12-110v, \$135. 10 watt Hi-Fi amplifier in box, 12" speaker, \$30. William Fedrich, Ext. 548 or SH 4-3926 after 6:00 p.m.

SEMI-ELECTRIC TYPEWRITER - Smith-Corona, like new, \$95. LT 9-0997 after 6:00 p.m.

CRIB & DRESSER - Highboy, 6 draws, blonde mahogany, excell. cond., \$40. Castro convertible sofa, grey, \$35. with slip covers. F. Enright, Ext. 2390.

ELECTRIC HOT WATER HEATER - Sears Roebuck, 68 gals., glass lined, 6 yrs. old, 10 yr. guarantee, \$50. A. Losi, Ext. 2459.

RABBITS - New Zealand white, one male, two female, full grown, complete with hutch, free for the taking. Ext. 2365.

MOVIE CAMERA - Automatic, 8mm, Wollensak, three lens turret with f1.8 fixed focus lenses and automatic elec. eye exposure setting. Complete with filters, make offer. B. McRickard, Ext. 2165.

FOR RENT

RANCH HOUSE - 5 rooms, North Shirley, completely furnished, garage, available March 1. Ext. 2560.

WANTED

LADIES FIGURE SKATES - Size 7. Also: Old Lionel train equipment, "O" gauge. C. Davis, Ext. 576 or 2717.

PEOPLE - To join intermediate conversational French class to meet in Bellport one evening a week. If interested, call AT 6-9257.

1958-1960 VW, SR, Radio and Heater. Ext. 454.

LOST & FOUND

LOST - One sterling silver earring with the initial "B". Lost on January 24 somewhere between the Cafeteria and Building 459. Ext. 594.

FOUND - Black knitted gloves with leather palms. Found in parking lot in back of Post Office. Personnel Services, Ext. 2107.

SOLUTION TO CHESS PROBLEM

White	Black
1. B-B5 check	1. K-B8
2. R-B8 check	2. K-K8
3. B-N4 check	3. K-Q8
4. R-Q8 check	4. K-B8
5. B-R3 check	5. K-N8
6. R-N8 check	6. K-R8
7. B-N2 check	7. K-N8
8. B-K5 dis.ch.	8. K-B8
9. B-B4 check	9. K-Q8
10. R-Q8 check	10. K-K8
11. B-N3 check	11. K-B8
12. R-B8 check	12. K-N8
13. K-R3	13. ...
and	
14. B-R2 is mate	