

the Bulletin Board

VOLUME 16, NUMBER 20

Published by the BNL Personnel Office

FEBRUARY 5, 1963

DR. GOLDHABER TO APPEAR ON TV

On Friday, February 8, at 8:00 p.m., Dr. Maurice Goldhaber will appear on a half-hour TV program presented by the National Education Television Network, which is sponsored by the National Science Foundation. The program, one in a series under the general title **Exploring the Universe**, will be found on Channel 13. Dr. Goldhaber, will be interviewed by Dave Garroway on the question "Is there a scientific method?"

SCIENCE YOUTH DAY

On Monday, February 11, Brookhaven will hold its annual Science Youth Day program as part of the International Edison Birthday Celebration. Suffolk high schools have been invited to send their outstanding eleventh and twelfth grade students. Approximately 250 students and their teachers are expected to participate.

The single morning session, which all visitors will attend, will be devoted to high energy physics. Talks on strong interactions and weak interactions will be given in the Brookhaven Center. In the afternoon eleven discussion groups will be held simultaneously, in the fields of biology, chemistry, medicine and physics, and each student may choose the session of most interest to him. These small discussions will be conducted by BNL scientists who will present particular research problems, outline the ways in which they are seeking to solve them, and demonstrate the machines and other equipment used in the course of their work.

TWENTY-FOURTH BROOKHAVEN LECTURE

By: MAYNARD E. SMITH
Instrumentation & Health Physics Dept.
Title:

"The Use and Misuse of the Atmosphere"
**Lecture Hall - Wednesday - February 13
8:00 p.m.**

A buffet supper (\$2.75) will be served at the Brookhaven Center before the lecture, beginning at 6:00 p.m. Reservations should be made at least one day in advance, by calling Ext. 2302 before 5:00 p.m., or Ext. 2453 in the evenings.

"VISIT TO A SMALL PLANET"

STARTS THURSDAY



Harold Schwarz, Ed Sayre and Dan Schaeffer (left to right) in a scene from "Visit to a Small Planet."

ADMISSION: \$1.00-Employee-Family member-\$1.25-Guests-\$0.50-Children (Under 18)

"VISIT TO A SMALL PLANET," a three-act comedy, opens on Thursday, February 7, at 8:30 p.m., at the BNL Theatre. Tickets will be available for this and the two other performances on Friday and Saturday, February 8 and 9, in various departments listed to the right. Tickets will be sold until Thursday, February 7, after which they may be obtained at the box office only.

Visit to a Small Planet.

The director, producers, stagecrew and cast have spent many hours rehearsing to make this one of the best shows ever. Let's all turn out to show our appreciation - they deserve it. And remember - the next "ham" on the stage may be you.

MARY SEMERJIAN - AGS
ELLIE MURGATROYD - Administration
GEORGE SABINE - Recreation
DONALD WIMBER - Biology
EDNA HODGES - Biology
ED SAYRE - Chemistry
GERT FRIEDLANDER - Chemistry
Mildred Isold - Cosmotron
MARIAN CHILDRESS - Graphic Arts
HELEN COOKE - Instrumentation
RITA STRAUB - Medical
MARIE FOLLENIUS - Medical
KATHY GIAMBALVO - Nuclear Engineering
PAT TOWEY - Physics
DEDDIE BLUHM - Physics
JEANNE BALDWIN, Reactor
ROBERT FUCHS - Reactor
PAT LAWLESS - Women's Dorm (Upton)

CAFETERIA SPECIAL

THURSDAY, FEBRUARY 7

Broiled Sirloin Steak
French Fried Potatoes
Tossed Green Salad
\$.85

NEXT BERA CONCERT

The TRIO DI BOLZANO, which was enthusiastically received here during the 1958-59 season, will pay another visit to BNL this month. The concert will take place at the Brookhaven Center on Tuesday, February 26, at 8:30 p.m. Watch for details next week.

BERA EXECUTIVE BOARD ELECTION



Left to right, top to bottom: Leonard Baker, John Binnington, Kurt Jellett, Andrew Kevey, Mildred O'Neill, and David Thomas.

The terms of three members of the Executive Board of BERA will expire on March 1, 1963. The BERA Nominating Committee presents the following slate of six candidates, from which three are to be elected for a term of two years.

Ballots with voting instructions are being distributed this week to all employees. Election results will be announced in THE BULLETIN BOARD issue of February 19.

Arrivals and Departures

WELCOME TO BNL

AGS	Richard J. Andreano	Ext. 311
APPLIED MATHEMATICS	Irene R. Nicodemus	2736
	Carole J. Sawner	2448
	Lourdes Zavitsas	2549
BIOLOGY	Arthur N. Zeitlin	359
CENTRAL SHOPS	Herman O. Drews	566
	Lenore L. Towne	2596
NUCLEAR ENGINEERING	James H. Altemus III	2243
	James D. Cassidy	2718
	Richard S. Siegel	784
PERSONNEL	Eugene Collins	2812
PLANT MAINTENANCE	Curtis Chapman	2381
	Joseph F. Risley	2120

RECENT DEPARTURES

MEDICAL	Gar E. Weber
PHYSICS	Sanford E. Wolf
REACTOR	William Hoey

PERSONNEL SERVICES

At the Recreation Office - 3 Center Street
Daily - 9:00 a.m. to 1:00 p.m.

DISCOUNT TICKETS

Tickets are now available for the following shows and events:

"Sound of Music" - Playing at the Mark Hellinger Theatre. Tickets are good for the Tuesday through Friday evening performances, now through February 22.

World Series of Professional Tennis
Madison Square Garden - February 10

New York Knickerbockers
Madison Square Garden - February 13, 17, 22, 26, March 8, 12, 15.

Sixth Annual Marine Recreation Show
West Hempstead - February 9 through February 17.

Mineola Playhouse
February 10 through March 10. The plays are "A SHOT IN THE DARK," H.M.S. PINAFORE," and "THE MIKADO."

BATTERIES

Popular size batteries (for games, toys, flashlights and transistor radios, etc.,) have been added to the discount sales items offered at the office.

ST. PATRICK'S DANCE
Friday, March 15

NON-TAXABLE SICK LEAVE

The Internal Revenue Code of 1954 provides that payments made to employees for sick leave under the Laboratory sick leave policy may under certain circumstances be excluded from gross income for Federal income tax and Social Security purposes. Payments received under the following circumstances may be excluded:

1. If absence from work is caused by **sickness** extending beyond seven consecutive calendar days, sick leave payments up to a weekly rate of \$100 attributable to the eighth and all consecutive days of absence thereafter may be excluded from gross income.

2. If absence from work is caused by **sickness**, and the employee is **hospitalized** for one or more days during that absence, sick leave payments up to a weekly rate of \$100 attributable to the first day of absence thereafter may be excluded from gross income.

3. If absence from work is caused by **personal injury** (either occupational or non-occupational), sick leave payments up to a weekly rate of \$100 attributable to the first day of absence and all consecutive days of absence thereafter may be excluded from gross income.

Any employee who has sick leave payments during 1963 which fall in one or more of the above three categories should fill out form No. 989-A, obtained through your department, **immediately after the illness** and return the form to the Payroll Section. It is important to note that Form 989-A SHOULD BE COMPLETED UPON THE EMPLOYEE'S RETURN TO WORK so the information can be reported on the W-2 form next year. If you fail to report non-taxable sick leave at the time it occurs, it will be assumed that the sick leave payments are taxable.

If an employee elects to use vacation leave to provide wages while absent because of illness or injury, vacation pay may be considered in computing the amount of sick pay exclusion.

TABLE TENNIS TOURNNEY

All the entries are now in and the **Singles** competition is about to get under way. The schedule is being prepared and will be posted in the Gymnasium on Thursday, February 7. Copies of the Tournament regulations will be posted and distributed to the competitors. Competition will officially begin the week of February 11. Trophies will be presented by BERA to the winner and runner-up.

Unfortunately, because of the lack of entries, there will be **No Doubles** Tournament. Entry fees will be refunded at the Recreation Office.



KEGLER'S KORNER

Der grossen eventsenspecial vinnere: Das Nightengalers, J. O'Connell, mit 688, das Electronicker, P. Levy, rollen 675; und das Healthen Physica Outer, T. Malinowski, keglen 701.

Ve haffen vier newmembersen der clubben 666 - der starsers uppensebuv, und der Blooper D. Dioguardo mit 666.

Der vimen iss ben takender trophies like hellesegerfier, mit L. Bullinger's 201 (126 av.), G. Fales 215, und J. O'Connell's 215 (126 av.). -- Jere Austin

BOWLING AWARDS

The recipients of the engraved cigarette lighters, for bowling the high individual gross series in their respective leagues during the week of January 28, are as follows:

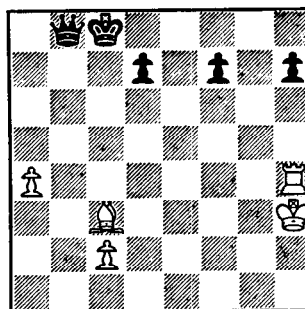
- PINK - Jody O'Connell - 688
- GREEN - Paul Levy - 675
- RED - Tom Malinowski - 701
- BLUE - Sal Sparacino - 732
- PURPLE - Walter Stanford - 657

UPTON RIFLE-PISTOL CLUB

The indoor small bore rifle tournament at the Patchogue Armory will start on Wednesday, February 13, at 7:30 p.m. All Club members are welcome. The entry fee is \$1.00 which will be put towards prizes. Ammunition and targets are free. There are .22 calibre rifles available at the club room for those Club members who would like to borrow one.

CHESS PROBLEM

In this week's problem, it is White's move. Black has a queen for a Rook and a Bishop, besides being a Pawn ahead, but is it enough to win? Answer elsewhere in this week's BULLETIN BOARD.



COOKING EXCHANGE GROUP

The Cooking Exchange Group will meet on Thursday, February 7, from 3:00 p.m. to 5:00 p.m., in the Recreation Building. French cooking will be demonstrated. Baby-sitting is available at \$.50 per mother. Call Mrs. Phillips, Ext. 724

CAFETERIA BULLETIN BOARD

Before any announcements, notices or posters are placed on the Cafeteria bulletin board, they must have prior approval by the Personnel Office, Ext. 396 or 2375.

FOLK DANCING

There will be folk dancing every Monday evening from 8:00 p.m. to 11:00 p.m. at the Recreation Hall.

NEXT BERA MOVIE

"TWO WAY STRETCH"

Thurs., Feb. 14. 8:30 p.m., Lecture Hall

FOR SALE

1958 CADILLAC - Eldorado, convertible, priced for quick sale, new tires, top, etc. \$1500. SE 2-8818 after 6:00 p.m.

1960 LARK 6 - 2 dr., 20K miles. Ext. 454.

1958 SIMCA - Aronde, r&h, new battery, still makes 28 mpg. \$300. Also: Tape recorder, Wilcox-Gay. \$30. B. Reitzner, Ext. 625.

1961 FORD - V8, 4 dr., ranch wagon, r&h, std. shift, one owner, 15,000 original miles. \$1500. Joe Bauernfiend, Ext. 772.

1959 CORVETTE - Blue and white, 230 hp, 3 speed, r&h, new w.w tires, excell. cond. L.C. Emma, Ext. 2387.

12' FIBERGLASS BEETLE CAT BOAT - Dacron sails, aluminum mast. Washburne, Ext. 395.

18' RUNABOUT - Higgins Deluxe Utility, powered by 95 hp Chrysler "ACE." Fast and seaworthy, an excellent boat for skiing, fishing or relaxing. Complete with new cushions, anchor, full cockpit cover, lights, lines, etc. All in immaculate cond. Painted, varnished and ready to go. \$850. R. Young, Ext. 591.

32' BOAT - Sedan cruiser, enclosed head, galley with bottled gas stoves (2), sleeps 6 in two cabins. Chrysler crown powered with fresh water cooling. Buy now for early Spring-in-the-water-delivery. J. Mann, Ext. 2221.

10 HP SCOTT - 1960, excell. cond. \$110. 13 hp Evinrude, 1954, good cond. \$55. 18' pen yan canoe, perfect, \$150. Kenneth Conroy, Ext. 2435 or AT 1-9956 evenings.

HOUSE - 7 rooms, wooded 1/2-acre in beautiful north shore community with private beach rights, 3 bedrms., 1 1/2 baths, large recreation room, fireplace and many extras. SH 4-9877 evenings.

RANCH HOUSE - Huntington Village, 7 rooms, garage ½ acre, fine location, hot water heat, screened patio, 23x28, lovely garden, fish pond and wishing well, full cellar. Schools, churches, shopping within one mile. Many extras. Ext. 2579 or HA 7-3809 after 6:00 p.m.

MEN'S ICE SKATES - Size 12, hockey skates, \$5. A. Czarnecki, Ext. 363.

ICE SKATES - Man's hockey, size 13. Almost new, \$7. Ext. 2325.

ORGAN - Wurlitzer spinet, 2 manual plus full set of factory installed chord buttons. Solid walnut Italian provincial cabinet. 2 yrs. old. For quick sale, yours for almost half original cost. Ext. 2512 or EM 3-6155.

VACUUM CLEANER - Electrolux, 2 yrs. old, excell. cond. \$35. Jerry, Ext. 2255.

REFRIGERATOR - Frigidaire, 1942, 6.9 cu. ft., excell. cond., \$50. At 6-8644.

FURNITURE - 1 maple finished night table or plant stand, 16"x16"x29". 1 baby chifferobe, maple, excell. cond. Has 4 small and 2 large drawers plus hanging room, 38"x16"x48". 1 telephone gossip bench, mahogany finish, 30"x15"x29". R.M. Brown, AT 6-1214.

ACCORDION - 120 bass, five switches, black and gold, with case. Very good cond., \$85. A. Timpe, Ext. 434 after 4:00 p.m.

WASHER-DRYER COMBINATION - Single unit, Westinghouse, good cond. \$90. Ext. 2543 or AT 6-0798.

TYPEWRITER - Hermes portable, very good cond. \$25. Al Lorensten, Ext. 301 or AT 9-1665.

MICROSCOPE - Leitz SM-type, monocular, \$330. Ext. 466.

CAT - Who would like a four month old black male cat? Nice, clean animal. Ext. 507.

KITTENS - Two females, grey tiger marked, 11 weeks old. Free for the taking. Vise, Ext. 467 or JU 4-9550.

ROLLEIFLEX - 3.5f with 3.5 Schneider Xenotar lens, incl. supplementary lenses, filters, case and others equal to new. \$200. Ext. 2222.

WANTED

1958-1960 VW - Sr. Ext. 454.

GAS HEATER - Suitable for bathroom, Stew, Ext. 350.

PIANO - Upright or spinet in good cond. K.W. Lai, Ext. 2663 or SH 4-9682.

OLD ELECTRIC TRAINS - Any make, manufactured before 1940, "Standard" or "O" gauge. Andrew Reichlen, Ext. 577 or HR 3-3077.

ROOMER - Male, to enjoy quiet room in Patchogue. Light breakfast included. \$15. per week. Ext. 454.

SKIERS - Wanted for auto. trip to Stowe on Washington's Birthday weekend. A. Fleitmen, Ext. 344.

TYPING - To do in my home. LT 9-3269.

IRONING BOARD - N. Purdie, Ext. 614.

EFFICIENCY APARTMENT - 1½ to 3 rooms, furnished with kitchen. Close to BNL. William Odgen, Ext. 2281 after 5:30 p.m.

SLIDE PROJECTOR - Used 2¼x2¼. Bill Rodgers, Ext. 782.

Mother will care for child of working parent by weekday or hour. LT 9-3269.

CARPOOLS

Would like to form or join carpool from North Shore (Port Jeff./Smithtown area) to Hofstra College, Monday and Wednesday, late classes (8:00 to 10:45). Max Hilgemeier, Ext. 2531 or HR 3-5172.

Established carpool from South Patchogue desires member to drive 1 day a week. We lost out 5th wheel. J. Baldwin, Ext. 798.

Paying rider needs transportation from traffic light near movies in Port Jefferson Station. Alice Trubisz, Ext. 351.

Drivers wanted for carpool from Patchogue area, south of Sunrise Highway. Pat, Ext. 610 or Elaine, Ext. 330.

Paying rider needs ride from Mt. Sinai. HR 3-3876 after 6:00 p.m.

Paying rider desires transportation from Greene Ave., Sayville. Ruth Kelly, Ext. 2234.

Fifth driver desired for carpool from Babylon, West Islip area. Bill Rodgers, Ext. 782.

Driver, living north of 27A in East Patchogue, would like to form a carpool or join an existing one. Schiellerup, Ext. 467.

FOUND

BLACK LEATHER GLOVES - Child's size 13, found in Medical Lobby, Personnel Services, Ext. 2107.

Wisdom, is neither legacy or inheritance.

-EDWARD YOUNG

SOLUTION TO CHESS PROBLEM

WHITE	BLACK
1. R-B4 check	1. K-Q8
2. B-B6 check	2. K-K1
3. R-K4 check	3. K-B1
4. B-K7 check	4. K-N2
5. R-N4 check	5. K-R3
6. B-N5 check	6. K-R4
7. B-B4	7. Q-N5
8. R-N5 check	8. K-R3
9. B-B1	9. Q-N8
10. R-N1 dis. check	10. K-R4
11. B-K3	11. Q-R7
12. R-N5 check	12. K-R3
13. K-R4	13. Q-R6
14. R-N3 dis. check	

White wins as Black must give up his Queen for the Bishop.