

the Bulletin Board

VOLUME 16, NUMBER 26

Published by the BNL Personnel Office

March 19, 1963

CAFETERIA SPECIAL

The BNL Cafeteria will serve a "steamboat roast" on Thursday, March 21, from 11:00 a.m. to 7:00 p.m. The meat will be carved to order at a cost of **\$.75** (vegetables will be extra). This meal will be served from the regular food-line, and the speed line to the left will be used to serve carved to order "steamboat roast" hot sandwiches, which will also cost \$.75.

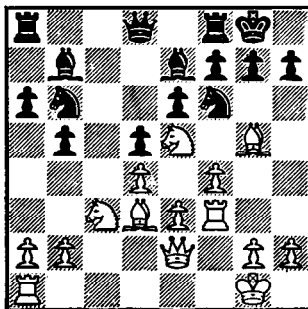
The Cafeteria has installed a Thermo Wave oven which will enable patrons to have a more varied menu. For example, those desiring steaks, chops or chicken, may have them cooked to order in less than a minute.

BERA CONCERT MARCH 20

A reminder that the Menuhin-Ryce Piano-Duo will perform music for four hands at one piano at 8:30 p.m., at the Brookhaven Center.

CHESS PROBLEM

In this week's problem, all the pieces are still on the board except for a Pawn each. It is White's move and win. How? Answer elsewhere in this week's BULLETIN BOARD.



Arrivals and Departures

WELCOME TO BNL

BUSINESS OFFICE
James J. Kelly Ext. 2429
PHYSICS
John M. Dunning, Jr.

RECENT DEPARTURES

PHYSICS
Emanuel Ferrara
Ian O. Skillicorn

HARVARD-RADCLIFFE ORCHESTRA CONCERT, MARCH 31



Miss Lily Dumont will be the featured soloist with the orchestra. She will play the Beethoven Piano Concerto #4.

Lily Dumont, pianist, brought with her a considerable European reputation when she came to the United States, having appeared widely on the continent in solo recital and with outstanding conductors like Leo Blech, Joseph Rosenstock and William Steinberg. She has continued her European successes in this country and her yearly return engagements to the continent. She has been represented in Concert Hall Society recordings.

Remember that tickets are now available on an open basis for the Harvard-Radcliffe Symphony Concert on March 31. This means that your guests are welcome as long as tickets are available.

Guest tickets.....\$1.25
Employee, family members.... 1.00
All children......75

FOLK DANCE RECESS

The Brookhaven Folk Dance Group will discontinue its activities for the next several weeks. The regular Monday night programs will resume on Monday, April 15.

BNL TURNED GREEN

Over three hundred came out last Friday evening to welcome St. Patrick at BERA's dance in the Gymnasium. A great time was had by all! The musical entertainment provided by Jerry Van and his band turned out to be one of the highlights of the affair. Proof of Jerry's reception was a packed dance floor every time he played.

Bob Whalen, our Irish tenor, put the attendees into the spirit of the occasion with his renditions of many of the Irish favorites. He also sang a few for the non-wearers of the green. The applause after each song, and the requests for encores and autographs, showed the audience's appreciation of Bob.

The decorating committee, headed by Duke Worthington (who also doubled admirably as MC), had the Gymnasium dressed beautifully in a cloak of green with a night club atmosphere. Many thanks go to Duke and his committee for an excellent job. Most of his major assistance came from John Zahra, Mike Mooney, Jack Scharpeger, Manny Pedrose and Marion Childress.

S&M did this one - who's next?

VISITORS

A meeting was held at BNL on March 18, 19 and 20, on High Flux Reactors, sponsored by the European Nuclear Energy Agency. Representatives from European countries met with members of the Nuclear Engineering Department.

Seventy cadets and officers from the U.S. Military Academy at West Point toured the Laboratory on March 18.



CHILDREN'S CONCERT APRIL 6

A children's concert will be given by The Festival Winds, made up of flute, oboe, clarinet and bassoon. The group is headed by Melvin Kaplan, who is well-known to BNL audiences of almost all ages. The concert will take place at the Brookhaven Center on Saturday, April 6, at 2:00 p.m.
Admission \$1.00 each

PERSONNEL SERVICES

**At the Recreation Office, 3 Center Street
Daily 9:00 a.m. to 1:00 p.m.**

MET BASEBALL TICKETS

Don't be among the disappointed baseball fans; hurry in for your box seats while there are still some choice dates available. We still have a few seats left for night games in April between the Mets and the ex-New Yorkers (Los Angeles), and a Sunday double-header with the Milwaukeees. Sorry, but opening day is sold out.

DISCOUNT TICKETS

Mineola Playhouse presents their Spring Festival of Musicals with three captivating shows:

Rogers and Hammerstein's **Flower Drum Song**, starring Yin Sun, playing March 26 through April 14.

Rogers and Hammerstein's **The King and I**, starring Betsy Palmer and William Chapman, playing April 16 through May 12.

Irma La Douce, starring Genevieve, playing May 14 through June 9.

Get your discount tickets now for these three shows.

Circus lovers get your tickets for the famous **Ringling Bros. Barnum & Bailey Circus**, playing at Madison Square Garden. Discount tickets are still available.

**NEXT BERA MOVIE
"A NOUS LA LIBERTE"
March 28**

**SCOTCH DOUBLES BOWLING TOURNAMENT
DEADLINE - MARCH 22 - 3:00 P.M.**

ENTRY APPLICATION

Submit to Recreation Office

Must be accompanied by \$4.50 non-refundable fee

Employee

Partner

1. Names _____
2. Average as of March 1, 1963 _____
(BNL Bowlers use current BNL average.
(Others use highest current average). _____
3. League in which average was made. _____
4. Lanes at which League bowls. _____

Entrants are responsible for familiarizing themselves with Tournament Rules.

Received at Recreation Office (Date) _____ By _____

Assigned Team No. _____ The total number of teams will be _____

SOFTBALL

Plans are now underway to get the 1963 season started. Copies of the rules and entry blanks will be sent to all last year's captains this week. New departments considering joining the ranks should start gathering their forces and pick up entry blanks and league information at the Recreation Office, 3 Center Street.

A captain's meeting has been scheduled for April 3. For additional information call the Recreation Office, Ext. 391.

COOKING EXCHANGE GROUP

The Cooking Exchange Group will meet on Thursday, March 21, from 3:00 p.m. to 5:00 p.m. in the Recreation Building. Yeast breads will be demonstrated. Baby-sitting is provided at \$.50 per mother. Call Mrs. Phillips, Ext. 724.

SUMMER BOWLING

The Bowling Executive Board has received several requests for a Mixed Summer League, and would like to know just how much demand there is for such an activity. Employee's wives or husbands would be eligible for such an activity. Interested parties should contact Grace Fales, Ext. 2164, not later than the end of March. If sufficient interest is shown, a meeting will be held at a later date to decide the type of league, date, time, lanes, etc.

BRIDGE

GAYNOR WINS INDIVIDUAL

A fine turnout of twenty-five enthusiastic players competed last Thursday evening for the Individual Championship. Lee Gaynor topped the field with 61 out of a possible 96 points to win a handsome trophy. The other leading finishers were:

2. Sandy Wagner	59½
3. Skelly Frei	58
4. Jean Kuo	55½
5. Mort Sternheim	53½
6/7. Monica Friedes	53
6/7. Bill Sampson	53
8. Bill Tunney	51½
9. Joe Friedes	50½

Good bridge was played despite the fact that each player was required to play with 24 different partners. For example, on a hand which contained only 32 high card points and exactly 13 tricks, every pair but one bid and made 7NT.

Jean Kuo, recovering from a mild state of shock after opening 1S on the hand below, and hearing her partner respond 7S, trumped the heart ace opening and set the diamonds up with a ruff. Thirteen tricks were taken at every table, but no other pair bid the grand slam.

N (Wagner)

A Q 10 9 X
-
A K X X X X
Q

W

X
A X X X
Q J 10
J X X X X

E

X X
J X X X X
X X
A X X X

S (Kuo)

K J X X X
K Q X X
X
K 10 X

Bidding

S
1S

N
7S

A club lead, of course, would have beaten the hand.

There will be a full master point game this week, Thursday, March 21, in the Recreation Hall. The game will start promptly at 7:45 p.m., and will end by 11:00 p.m. If you need a partner, call Bob Dvorak, Ext. 618.

**COMING
CHILDREN'S CONCERT
APRIL 6**

SATURDAY MARCH 30 3:00 P.M. PORT JEFF BOWL

No partner yet? Call our Matchmaker Service: L. Bartos, Ext. 2172, L. Baker, Ext. 591. or L. Lento, Ext. 411.

UPTON RIFLE AND PISTOL CLUB

PISTOL SQUAD

The BNL Pistol Squad was awarded First Place Team Trophies at a special awards dinner held in Riverhead by the Eastern Long Island Pistol League on Tuesday, March 12. This nationally registered League found our gunners in a Marshal Dillon finish with the Suffolk County Air Force Base.

Squads from various Suffolk areas which were awarded trophies were:

- | | |
|--------------|----------------|
| First Place | Upton (BNL) |
| Second Place | U.S. Air Force |
| Third Place | Mattituck |
| Fourth Place | Riverhead |
| Fifth Place | Quogue |
| Sixth Place | Southampton |

The Squad also fired the League's highest aggregate score in the League's existence, and boasted the best Squad attendance record, as well as other classic firsts, appreciated by statisticians.

Members to be congratulated on their outstanding performance in this League are: F. Baumfalk, P. Buhl, P. Colsmann, J. Diener, C. Goodzeit, P. Hichborn, J. Jesseph, M. Johnson, F. Keute, J. Kopp, J. Mazzeo, and J. Rutherford.

On Wednesday evening, March 20, a select slow-fire Squad comprised of J. Mazzeo, J. Kopp, P. Colsmann, P. Hichborn, C. Goodzeit and J. Diener will fire a nationally recognized competition at the Patchogue Armory. The competition, which is registered with the National Rifle Association and the National Industrial Recreation Association, was entered by BNL last year with a commendable showing. BERA has again sponsored our Squad in this competition, and appreciation is expressed by the Squad in the confidence shown in this honor.

Large-Bore shooting starts on the north site range on Sunday, March 31, at 2:00 p.m. Entrance fee in this tournament is one dollar. Targets and 30-06 ammo are supplied free. The club has five M1 Rifles which may be used by those who do not have rifles. For details contact A. Lukas, Ext. 769, or F. German, Ext. 2151.

The **Small-Bore** intra-club small-bore rifle tournament, held every Wednesday evening at the indoor range of the Patchogue Armory, will soon come to an end. The officers of the club wish to thank the membership for the splendid turnout, and hope that the same enthusiasm will prevail at the opening of the large-bore rifle tournament scheduled to start on March 31.

Winners of the small-bore tournament will be announced at a later date. The shooters selected to represent the U.R.P.C. in the national and regional

HELLER IS CHAMP!



Champion Sid Heller (left) and runner-up Andy Kevey (right) receive their awards from George Sabine.

In one of the most exciting Table Tennis finals we have ever had at BNL, Sid Heller defeated Andy Kevey for the 1963 Championship. The match, which was a best out-of nine encounter, was played in the Gymnasium Game Room last Thursday.

Kevey's smashing offense, both fore and backhand, took an early lead as he promptly won the first two games 21-16 and 21-14. The third and fourth saw Andy letting down a bit as Sid's tremendous defense tightened up and he made Kevey smash 4-5 times before he'd give up a point. Heller won these two 21-11 and 21-17. By the end of the fourth, both players were tiring and took a short rest, as the match was tied 2-2.

The audience was treated to a fine display of competition, as the next three games all went to deuce. Again Heller's fine defensive maneuvers kept Andy working and just a few points from victory. In the fifth game he won 23-21, the sixth 25-23 and finally in the seventh 23-21. So - after losing the first two, Heller came back with five straight wins to take the match and Championship. Both contestants are to be congratulated for their competitiveness and fine sportsmanship.

The BERA awards to the finalists were presented by George Sabine (Recreation).

small-bore tournament, sponsored by the National Rifle Association are: A. Lukas, P. Colombo, R. Domish, and F. Rumph. Last year A. Lukas took second place in the regional meets.

SOLUTION TO CHESS PROBLEM

- White wins with:
1. B x N if Black's 1. B x B or P x B he mates with
 2. B x P check 2. K x B
 3. R-R3 check and
 4. Q-R5

CLASSIFIED ADS FOR SALE

1953 MERCURY - 2 dr., hardtop, 59,000 original miles, R&H, std. trans. New snow tires, brakes, etc. No oil burner, rust-free body. Excellent dependable transportation. Reasonable. F. Kaiser, Ext. 475.

1961 BUICK SPECIAL - 4 new tires, power steering & radio. \$1600. R. Majestic, Ext. 686-2687.

1962 PONTIAC-TEMPEST - "La Mans" Sport Coupe, 166 hp, bucket seat, auto. trans., r&h, ww. Must sell, Marian, Ext. 660 or FO 8-4163.

1958 T-BIRD - Steel gray and black, auto. trans., r&h, power brakes. Excellent condition. \$1,600. M. Follenius, Ext. 301-107 days or HR 2-0449, eves.

1953 HILLMAN - Convertible heap. No prize, but good for parts and tires. Best offers will be considered. J.M. Dioguardo, GR 5-0126 after 5 p.m.

1959 VOLKSWAGEN - Cream Puff, one owner, candy-apple red, new ww, battery, brakes, r&h. \$1,050. R. Hedrick - JU 8-7989.

1956 PONTIAC - Convertible, new top, mechanically perfect. \$500. R. Rech, Ext. 360. After 5, AT 1-7844.

1955 BUICK - Auto trans., 4 new tires, r&h, \$300. Just had valve job. Roger Anderson. Ext. 2478 or SH 4-5277.

1960 MGA - Wire wheels, tonneau cover, r&h, never raced. Sacrifice. C. Goodman, Ext. 2255 or GR 5-8576.

1951 CHEVROLET - Sedan, air-conditioned by Frigette. Excell. for your trip west. Buy it here, leave it there. Body and engine like new; has been driven only by conservative scientists since new. \$125. W.C. Hamilton, Ext. 2484 or 751-1209.

1961 VW CONVERTIBLE - bright red, excell. cond. Blaupunkt radio. D. Berley, Ext. 2555 or 941-9472.

HOUSE - In St. James. Owner leaving for Calif. in 5 weeks. 3 bedrms, 16x12 kitchen with all appliances, dining rm. Separate entrance. Wall to wall carpeting. Living room with fireplace and built in bookcases. Sliding glass doors to screened in patio. Joe Montross, Ext. 362 or JU 4-6685 after 6 p.m.

HOUSE - In East Patchogue. 3 bedrms, ranch style, full basement, hot-air-oil heat, fenced in, blacktop drive. Bay Ave. school dist., convenient to stores and highways. GR 5-1706.

RANCH HOUSE - 3 bedrm, attached to one car garage. Brick and wood shingle, Roman brick artificial fire place, eat in kitchen plus dinette, Marlite kitchen, wall oven, ceramic bath, landscaped, near Patchogue schools. GR 5-1584.

RANCH HOUSE - Oversized, 3 bedrms, all appliances, recreation room, many other extras. \$15,500. Located in St. James. Ext. 563 or JU 4-6283.

RANCH TYPE HOUSE - Shirley, 6 mi. from Lab. Large living rm., with dining area. Large kitchen, 3 large bedrms. Conveniently located near school, shopping area and PO. Available now. AT 1-9767.

SPLIT-LEVEL HOUSE - 7 rms. in beautiful Shoridge Hills. Large living room plus huge recreation room; many luxury features, pvt. beach rights. SH 4-9877 evenings.

HOUSE - In Village of Bellport. 6 rms., lot 100' x 150', 2 1/2 car garage, hw oil heat, fireplace, screened porch, full cellar, attic; terra cotta construction, stucco. Close to schools & stores. \$16,500. Call AT 6-0097.

SAILBOAT - 17 ft. National class, center-board sloop, stainless steel rigging, two suits of cotton sails plus home-made boat trailer all in good condition. \$425. Enid Ext. 373

1958 WHIRLWIND - (Moulded Mahogany) 14' Boat. Also 1960 Tee-Nee Tilt Bed Trailer. All extras. \$500. Ext. 2316.

CRUISER - 21' Trojan "Sea Breeze", magnificent condition, built-in ice box, two-burner alcohol stove, stand up head, navy top, side curtains, back drop, 2 anchors, compass, 3 cabin lights plus running lights, winter tarp and support frame, boarding ladder, cushions and life jackets, etc. 1956 with 1957 35 hp Johnson. Sleeps two on foam. Best offer over \$1600. LT 9-3269.

BOAT - 22' - 8' Beam-Cabin-Sound Hull. Good family or fishing boat. Marine Chrysler 90 hp, Engine partially installed. Save money "As is" asking \$550. JU 8-2739.

BOAT - Motor - Trailer package: 12 ft. Whirlwind Jr., laminated plywood runabout with 10 hp Johnson outboard motor, trailer, anchor. \$300. firm. Ext. 423 or AT 1-9721 after 6:00 p.m.

TRACTOR - With plow in front. Good cond. YAphank 4-6374 after 5:30 p.m.

PUPPIES - German Shepherd with AKC papers. 5 weeks old. Male \$75. and female \$65. YAphank 4-6374.

COAT - Black-gray Persian lamb. Size 18-20. Almost new, \$500. HR 3-2879 after 6 p.m.

KODAK CAMERA - Adjustable safelight, swivel base, line switch on cord, 5 1/2" red filter, Wratten series 2. Perfect cond. Also 3 1/2" Decar f6.3 anastigmat lens - fits Federal photo enlarger & possibly some others. AT 6-9451.

SNOW TIRES - Two, 650x15 with tubes. Very good cond. \$10. Art, Ext. 612.

STAMP COLLECTION - Large, mainly older issues of British Commonwealth countries. Both mint and cancelled. Some very rare lots. All priced at a fraction of catalog value. Ext. 2657/356 or HR 3-3597 after 6 p.m.

EXAKTA VAREX CAMERA - Auto. Zeiss Tessar 50 mm. f/2.8 lens, u.v. filter, leather case. All in perfect cond. \$125. Ext. 2657/356 or HR 3-3597 after 6 p.m.

MOVIE CAMERA - 8 mm Bell & Howell with fixed focus f/2.5 lens, lens attachments and carrying case. Excell. cond. \$15. Mc Rickard, Ext. 2165.

VOLKSWAGEN SUPERCHARGER - Judson, fits all VW sedans from 1954 thru 1960 inclusive. Like new cond., complete with step by step installation instructions. \$25. Gene Rogers, Ext. 481.

TV - 21" RCA, table model. Good cond. \$50. Ext. 595 or HR 3-0242.

TV - 17" GE, small console. \$10. J. Mann, Ext. 2221.

TV - 21" RCA console. Good cond. \$65. Warren, Ext. 445.

FREEZER - Frigidaire Imperial upright. 15 cu. ft. (500 lb capacity) \$160. Warren, Ext. 445.

LOT - Patchogue. Private beach and boating privileges, asking \$1200. EA 5-6059 after 6 p.m.

VACUUM CLEANER - Tank type in good condition with all attachments. Asking \$20. Bob Schermer, Ext. 541 or SE 2-2498.

DORMEYER DEEP FRY - Like new. Will not turn down any reasonable offer. F. Merritt, Ext. 2373. Home LT 9-5126.

DECORATIVE FIREPLACE - With Electric logs and andirons. All in excellent condition. \$15. J. Hare. Ext. 2353.

COLLIERS ENCYCLOPEDIA - Ext. 397.

WANTED

HOME - for gentle female, 5 year old, Lassie type collie. Housebroken. Ext. 2100.

GOOD HOME - for Beagle Hound. Excell. family dog; remarkably clean and housebroken. Wonderful with children. Allergy forces disposal to someone who can offer him a good home. FREE. Ext. 475.

BUNK BEDS - 2 Sets - R. Wayte - Ext. 2233.

HOUSE FURNISHINGS - Stove, Couch, living-room chairs, bed, bookcase, upholstered bedroom chair - plain or rocking. Ext. 409. E. Gottesfeld.

FILE CABINET - One or two drawer. Ext. 2560 Margaret Greene.

TYPEWRITER - Electric, standard or portable. Pat Batt, Ext. 2174.

HOUSE TO RENT - Unfurnished 3-bedroom. On or before June 1. Must have garage or basement. Location close to either shore preferred. Call R. Masterson, Ext. 435 or YA 4-6865.

ALTERATIONS - Of womens dresses. Done by woman living on site. Margref Diehn, Ext. 2782.

WANTED TO RENT - 3-4 bedroom, unfurnished house in the Bellport, Brookhaven, E. Patchogue area. D. Filmer. Ext. 373 or AT 6-9592.

FOR RENT

HOUSE - Furnished in Blue Point. 4 bedrms, 2 baths, dining rm, living rm with fireplace. Den, patio, all appliances, w/w carpets, completely and attractively furnished. Available July 1 or August 15th through June of 1964. S. Pasternack, Ext. 2341 or EM 3-6104 after 6 p.m.

CARPOLS

Driver to join or form carpool in area of Hawkins Ave. & Hallock Rd., Lake Grove on Jericho Tpke. Nick Cipolla, Ext. 639. After 5 p.m., call JU 8-6417.

We need a fourth driver from West Islip-Babylon Area. Bill Rodgers, Ext. 782.

Paying rider needs transportation from Smithtown Bypass and Mt. Pleasant Rd., Smithtown. H. Maloney, Ext. 431.

Would like to join or form carpool from vicinity of McConnell Ave., Bayport. Joe Shaber, Ext. 2384.

Riders would like to join existing carpool from Hauppauge/Central Islip Area. Marion, Ext. 660 or FO 8-4163.

One driver wanted for existing carpool, daily, Wantagh (So. State Pkwy) to Lab. Call Bob, Ext. 2152 or Don, Ext. 543.

Paying rider needs transportation from vicinity of Sunrise Highway south, and Washington Ave. or Phyllis Drive. Carol Snee, Ext. 2795.