

# the Bulletin Board

VOLUME 16, NUMBER 37

Published by the BNL Personnel Office

JUNE 4, 1963

## STAFF LUNCHEON CLUB FORMED

A Staff Luncheon Club will start operation on June 17 at the Brookhaven Center. All A.U.I. employees, including Laboratory employees, and employees of the A.E.C. Brookhaven Office are eligible for membership.

The primary purpose of the Club is to provide an atmosphere facilitating and encouraging discussion between staff members. Lunch will cost \$1.50 and members will be billed for membership fees of \$2.00 per month and for their luncheon costs.

Listed below are some of the interim Club rules:

1) The main dining room will be open for the Luncheon Club from 11:30 a.m. to 2:30 p.m. on all regular working days.

2) All participants will be issued a numbered membership card on payment of the initial monthly \$2.00 charge, and will be expected to maintain membership for a period of one year.

3) Members have the privilege of bringing guests to the Club. However, this shall be limited to once a month for any individual guest who is eligible for membership.

Employees interested in joining should send checks, payable to A.U.I., for \$2.00 for the first month's fee to C. Hammond, Building 460.

## POOL SCHEDULE CHANGES

The Pool will remain on its winter evening schedule through Friday, June 21:

— Tues.-Wed.-Thurs.-Fri. —  
— 5:00 p.m. to 10:00 p.m. —

Beginning Monday, June 24, the summer schedule of rates and hours will be in effect as follows:

**POOL OPEN MONDAY THROUGH FRIDAY**  
2:30 p.m. to 9:30 p.m.

### DAILY ADMISSION RATES

Employee.....	\$ .35
Family member.....	.35
Guest.....	.60

### SEASON TICKETS

(June 24 to August 31)

Employee.....	\$ 5.00
Family.....	10.00

Tickets will be on sale at the Pool Office.

## VACATION CHECKS

Due to the increased workload in the Payroll Section, it is necessary that all Laboratory Departments and Divisions submit their requests for vacation checks at least one week prior to the release date of the checks. Also, once the request has been received an employee may not change his payroll deductions during the period for which he has requested vacation checks.

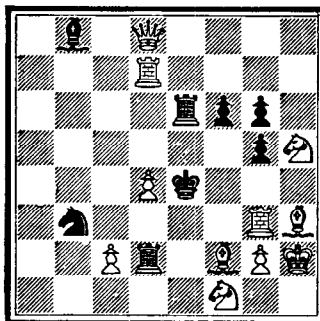
## VISITORS

The Biology Symposium is being held on June 3, 4 and 5.

Approximately twenty officers in the U.S. Air Force Reserve will tour the Laboratory on June 6.

## CHESS PROBLEM

In this week's problem, it is White's move and Mate in two. How? Answer elsewhere in this week's BULLETIN BOARD.



## FOLK DANCING

Don't miss out! There is folk dancing every Monday evening from 8:00 p.m. to 11:00 p.m. at the Recreation Hall.

## CAFETERIA SPECIAL

The Cafeteria will serve a "steamboat roast" on Thursday, June 6, from 11:00 a.m. to 7:00 p.m. The meat will be carved to order at a cost of \$.75 (vegetables will be extra). This meal will be served from the regular food-line, and the speed-line to the left will be used to serve carved to order "steamboat roast" hot sandwiches, which will also cost \$.75.

## FIRST 80-INCH BUBBLE CHAMBER PHOTOGRAPH OBTAINED

On June 2 the first photograph of nuclear interactions in the 80-inch Bubble Chamber was made. This, the world's largest operating chamber, is now available for USAEC-sponsored studies of nuclear forces and the properties of subnuclear particles, using the 33-Bev AGS as the source of bombarding particles.

The first bubble chamber, only one inch in length, was developed in 1952 by Dr. Donald A. Glaser at the University of Michigan. Since then, more than a hundred chambers, costing many millions of dollars, have been placed in operation at high energy physics laboratories in many countries. The 80-inch Bubble Chamber complex at Brookhaven, which took about four years to design and construct, cost about \$6 million.

## TWENTY-EIGHTH BROOKHAVEN LECTURE

By: DR. D.E. KOSHLAND  
Biology Department

Title:

"Catalysis in Life and in the Test Tube"

Lecture Hall — Wed., June 12 — 8:00 p.m.

A buffet supper (\$2.75) will be served at the Brookhaven Center before the lecture, beginning at 6:00 p.m. Reservations should be made at least one day in advance, by calling Ext. 2302 before 5:00 p.m., or Ext. 2453 in the evenings.

Refreshments will be available in the Exhibit Hall following the lecture.

## UPTON RIFLE AND PISTOL CLUB

There will be a meeting of the Upton Rifle-Pistol Club on Thursday, June 6, at 8:00 p.m., in the Recreation Hall.

Roy Domish was top gun in the Club's Large Bore Spring Tournament. Roy averaged 326 out of a possible 400 for the season. Al Lukas was second with a 316 average, while Pete Colombo came in third, averaging 292.

# BERA FILM SERIES

**"CARRY ON NURSE"**  
**Thursday, June 6**  
**8:30 p.m., Lecture Hall**



If there has ever been a film to prove that British humor is not necessarily subtle, droll and reserved, "Carry on Nurse" is that film. Phenomenally successful both in Britain and the U.S., this film is complete and unadulterated farcical chaos, and includes the wackiest assemblage of characters that ever appeared together on the screen. A plot, as such, doesn't really exist except insofar as it concerns the problems of the nurses in the men's ward of a hospital trying to evade the relentless pursuits of their patients. It is rather a series of vaudeville-type incidents and burlesque-type jokes put together for one purpose: to make the audience laugh. And that it will.

"An unabashed assault on the patrons' funnybones. The yocks come thick and fast and there is no concession to subtlety. . . a rollicking hospital farce that will raise laughs with all but complete eggheads. . . often risqué, it is never offensive, being done with such high humor. Between them, director Thomas, scriptwriter Hudis and a large cast have provided a fun-fest which is irresistible, even though the average patron will be able to see the gags, puns and situations coming up a mile away."

—VARIETY

## BERA FILM SERIES SUMMER PROGRAM

June 13	Disorder and the Night	JEAN SABIN
June 20	The Battle of the Sexes	PETER SELLERS
June 27	The Savage Eye - Also: The Overcoat	MARCEL MARCEAU
July 11	Left, Right and Center	TERRY THOMAS
July 18	Aparajito	INDIAN
July 25	Les Liaisons Dangereuses	GERARD PHILIPPE
August 1	A View From The Bridge	ARTHUR MILLER
August 8	This Strange Passion	
August 15	Private's Progress	IAN CARMICHAEL
August 22	The Mark	

— These films will be shown at 8:30 p.m. in the Lecture Hall. —

### BRIDGE GAME

There will be a duplicate bridge game on Thursday, June 6, at 8:00 p.m., in the Recreation Hall. Everyone is welcome.

### SOFTBALL FIELDS

The softball diamonds on Brookhaven Avenue and Princeton Avenue are to be used for scheduled league games and scheduled practice games. A field reservation schedule is maintained at the Recreation Office, 3 Center Street.

### GYM CLOSED

The Gymnasium will be closed for all physical activities the week of June 3rd. The swimming pool will remain open as scheduled.

### SOLUTION TO CHESS PROBLEM

The key to this problem is Queen to Rook 5. If Black's Knight takes Queen, 2. KxR mate, and if Black's 1. BxR check 2. KxB mate.

There are many other variations to this solution, but however Black moves, White's next move is mate.

## Arrivals and Departures

### WELCOME TO BNL

APPLIED MATHEMATICS	
Frank De Vito	Ext. 2589
BIOLOGY	
Julius M. Elias	367
Allen Rebuck	2543
FISCAL	
Theresa Marciante	2390
PHYSICS	
William H. Kollmer, Jr.	2677
Harold W. Sauter	
PLANT MAINTENANCE	
Henry G. Bornbusch	620
Stanley Kalinowski	2120

### RECENT DEPARTURES

APPLIED MATHEMATICS	
Emma Bluhm	
Eleanor Semon	
ARCHITECTURAL PLANNING	
Mildred J. Anzalone	
BIOLOGY	
Donald Wimber	
CHEMISTRY	
Hartmut Diebler	
Masayuki Hamada	
FISCAL	
Lillian Foskett	
NUCLEAR ENGINEERING	
R. Ranganathan	
PHOTOGRAPHY AND GRAPHIC ARTS	
Jane T. Olafsen	
PHYSICS	
Joseph Greener	
Marita Pallas	
Carmelo A. Spirio	
SECURITY & PLANT PROTECTION	
Robert E. Seaton	

### PERSONNEL SERVICES

At the Recreation Office, 3 Center Street  
 Daily 9:00 a.m. to 1:00 p.m.

### DISCOUNT TICKETS

Tickets are now available for "Around The World In 80 Days", playing at the Jones Beach, Marine Theatre. This ticket is good for all performances of the 1963 season **except** Saturdays, July 3 and September 1. The prices with discount are \$4.00 and \$3.20.

### MET TICKETS

Seats are still available for the following dates:  
 June 10, 21, 23, 25, July 6, 7, 14, 18;  
 August 11, 13; September 1, 2, 10, 12,  
 13, 15, 17.

### MICROMET

There is still a small supply of Micro-met on hand at the Recreation Office.

## CHILDREN'S SUMMER PROGRAM

Once again our Recreation Program will feature a "Summer Program" for children of Laboratory employees. The supervision will be provided by two experienced instructors.

Registration of each child must be made in advance, and parents will be required to sign a responsibility form agreeing to the necessary regulations of the program.

Both the On-Site Play Sessions and the Swimming Lessons will begin the week of July 8 and continue for a 7 week period through August 24. A special activities day has been planned at the Swimming Pool to climax the activities on Tuesday, August 27.

### On-Site Play Sessions

The morning portion of the program will be for children of on-site residents. Children must be at least 5 years of age. These sessions will be held each morning from 9:00 a.m. to 11:30 a.m. at the Recreation Building in the Apartment Area. Applications will be sent directly to residents.

### Swimming Instruction Classes

The afternoon segment of the program will be open to all employees' children. Classes will be conducted at the pool weekdays from 1:00 p.m. to 2:30 p.m. Each child will be scheduled for one lesson per week. Watch THE BULLETIN BOARD for all details, including registration forms, fees, schedules and other specific information.

## AROUND THE BASE PADS

By BOB CARCIELLO

Most of the action last week was in the National and Laboratory Leagues. The only game played in the Brookhaven League was won by the Blue Jays over Cosmotron 9-4.

Medical played two games last week and they won both contests by a one-run margin. They trailed the Old Timers by 8 runs until the sixth inning when 10 Medical men crossed the plate to give them the lead. Both teams scored in the seventh but the 10 runs scored by Medical in the sixth proved to be 10 too many as far as the OT's were concerned. The final score of the game; Medical 13, Old Timers 12. E.A.O. dropped the other squeaker to Medical, 9-8. In the other National League game, the Dirty Sox got into the winner's circle by defeating E.A.O., 13-4.

## OPERATION GET-TOGETHER NO. 6 COMMITTEES STARTING TO ORGANIZE FOR THE BIG DAY

AND THE BIG DAY IS JULY 27, 1963

Committees and plans were formally organized for our sixth annual picnic OPERATION GET-TOGETHER. The following departments and people have volunteered their services to help plan, organize and promote OPERATION GET-TOGETHER #6.

SECRETARY - AEC - Phyllis Mannino  
PROGRAM COORDINATION - AEC - R. Neuss  
AREA SUPERVISOR - Reactor - R. Fuchs  
AREA SUPERVISOR - Personnel - E. Collins  
PUBLICITY - Photo. - L. O Laughlin  
Nuc. Eng. - S. Feldberg  
TICKETS - Physics - I. Cole  
FACILITIES - Bub. Chamber - J. Andritz  
COMMUNICATIONS - Instrument - E. Hagelberg  
A. Torre  
SIGNS - Meteorology - R.M. Brown  
Photo. - M. Childress

REFRESHMENTS - (Purchase, Layout, Supervise)  
Chemistry - J. Walsh  
S. & M. - J. Missiano  
AEC - J. Holloway  
CARNIVAL ATTRACTIONS - Nuc. Eng. - J. Pontieri  
ENTERTAINMENT - Med. - M. Follenius  
Med. - C. Rosanski  
BEAUTY CONTEST - Physics - N. Webre  
ATHLETICS - Reactor - N. Roberts  
SPECIAL CONTESTS AND GAMES  
Instrumentation - R. Perry  
Instrumentation - J. Mead  
DECORATIONS - S. & M. - D. Worthington

**VOLUNTEER WORKERS:** BERA Executive Board

The next Picnic Committee meeting will be held at the Recreation Building, on Wednesday, June 12, at 12:00 noon. All Committee Members please attend.

Make plans now for the whole family to attend

OPERATION GET-TOGETHER NO. 6

SATURDAY, JULY 27, 1963

Over in the Laboratory League, the Odd Balls picked up two more victories. One game was forfeited by Kludge and in the other game they drubbed the Mets, 40-16. With a 40-run total one can't say that home runs hit by J. Bauernfiend and J. Post really helped win the game. The Mets dropped a second game last week to add to the now four-game winning streak of the Chamber Chaps. Joe Nardi and Paul Vosganian each hit a four bagger as the Chaps tallied 22 runs against the opposing Mets' 7.

Word has it the Kludge has picked up two good ball players to add to their roster: one from the Chamber Chaps and the other from the Bubble Boys, but we're still waiting to see them play.

With the exception of a few rained-out games, the first round of the slo-ball season will be completed at the end of this week. Watch for the standings of the teams in next week's BULLETIN BOARD.

## CAMERA CLUB

The previously announced slide lecture of wildflower and vegetable photography has been rescheduled for Wednesday, June 5, at 8:30 p.m. in the Recreation Building.

## CLASSIFIED ADS FOR SALE

VOLKSWAGEN - 1959, sedan, deluxe, black, red interior. Very clean, excell. mech. cond., served by VW dealer exclusively, one owner. New: four tires, battery, four brake linings, rear shock absorbers. 32 mpg. \$885. Andreas, Ext. 731.

1962 CORVAIR MONZA - Sports coupe, white with red vinyl interior, four speed transmission. All the extras. D. Karshick, Ext. 780 or LT 9-3056 after 6:00 p.m.

1962 RENAULT GORDINI - 40 hp engine, 4 speed gearbox, better than 30 mpg, 4 new tires, metallic grey, sliding roof. Must sell, leaving USA. Suggested price, \$900. Jean Oostens Ext. 2649.

1959 HILLMAN SEDAN - Good repair but needs a real lover. AT 6-0798.

1959 BUICK CONVERTIBLE - La Sabre, \$1495. Good cond. GR 5-8520.

1959 STUDEBAKER LARK - Black sedan, 2 dr. hardtop, 6 cyl., auto. trans. Available June 28 when owner leaves country. \$450. S. Sato, Ext. 2709 or Operator 56 after 5:00 p.m.

1957 CHEVROLET - 2 dr. sedan, straight stick, 6 cyl. Good dependable second car. Fine mechanical cond. Would like to sell before insurance becomes due. F. Rizzo, Ext. 2717.

1956 PONTIAC CONVERTIBLE - A give-away at \$400. Ext. 360.

1954 OLDSMOBILE - Power steering and brakes, very good cond. \$250. Jeane, Ext. 798 or AT 9-1568. ▽

1954 CHEVROLET - 4 dr., std. trans, clean. Short distance transportation, orig. owner, \$70. Dick Strand, Ext. 2658.

1953 STUDEBAKER - For parts only. Has excellent radio, good wheels, quite clean body. The only trouble with it is that it won't run. J. Oosting, Ext. 2543 or AT 6-9107 anytime.

1948 HUDSON - 4 dr., looks and acts half its age. Safe and reliable, \$75. C. Hedberg, Ext. 2407.

1959 OLDSMOBILE CONVERTIBLE - 88, Turquoise and white, power steering and seat, good tires, excell. cond. \$1495. GR 5-9383.

1951 PONTIAC - Eight, good cond, 3 new tires, new battery, orig. owner, only driver. Asking \$150. Ext. 322

1955 PLYMOUTH - 2 dr. sedan, r&h, auto. trans, excell. running cond. \$250. Ext. 2644 or Ext. 2611.

1963 SUNBEAM ALPINE - Convertible with heater, wire wheels and tonneau cover. White with black top. Asking \$2300. Ext. 590 or GR 5-2306 after 5:30 p.m.

HOUSE - 2 bedroom cape, hot water oil heat, alum screens and storms, large kitchen loaded with cabinets, full cellar, 60x180 beautifully landscaped plot. Abrams, Ext. 369 or LT 9-1358 after 6:00 p.m.

14 FT. SPEEDBOAT - Glasspar Marathon, elec. starting 45 hp Mercury engine. Boat cover, paddle, four jacket life preservers, fire extinguisher, anchor w/line, dock line and two 6-gallon gas tanks. Excell. cond. Must sell - owner leaving country. Best offer. M. Hess, Ext. 2902 or SH 4-2330 in the evening.

23 FT. SUMNERCRAFT - 115 hp Palmer. Inboard. Flying bridge, head, galley, monel tank with cradle. Ready to go. \$3750. AT 6-8770.

15 FT. THOMPSON - Fiberglassed. 7½ hp Elgin, used 3 times. Both for \$180. AT 6-1205.

14 FT. OUTBOARD - 1955 Olympia, 40 hp Mercury engine and fiberglassed bottom, completely overhauled, canvas top, elec. starter, motor cart, dinghy, \$500. Oakdale, LT 9-1889 after 6:00 p.m.

16 FT. LYMAN - With 40 hp outboard, fiberglassed top, lights. Good cond. Reasonable. GR 5-8898 after 5:00 p.m.

HOUSE - 3 bedroom ranch, Patchogue area. Formica kitchen cabinets, storms and screens, tub enclosure, covered patio, 5000 sq. ft. fenced in rear yard, 46'x26' basement, ww carpets, 120x100 wooded corner lot. Oil hot water heat. Walking distance to school and shopping. \$126/mo pays all. \$3300 over mortgage. Ext. 2528 or AT 9-1589 after 6:00 p.m.

HOUSE - Charming, 2 bedroom home on ¼ acre plot, located on quiet residential street in Brookhaven. Fireplace, large attached garage, oil forced hot air heat, aluminum storms and screens. Near elementary school and site of new high school. Ideal for new bride and groom or small family. For more details call Ernie, Ext. 362 or AT 6-1276 after 6:00 p.m.

COLONIAL HOME - Split level in Smithtown. 3 bedrooms, large living room, large dining room, TV den, laundry room, full bath and lavatory. Finished basement. Oil hot water heat. Storms and screens, refrigerator and washer, furniture optional. Patio. ¼ acre. Immediate occupancy, take over \$15,000 GI mortgage. Full price, \$17,500. AN 5-3484 after 6:00 p.m.

REEL LAWNMOWER - 18 in., gasoline powered. Good cond. AT 6-0798.

17 INCH TV - 3 speed record player. AM-FM radio console. 120 bass accordion with 2 shifts. Girl's 28" bicycle. HR 3-0178 after 6:00 p.m.

JIG SAW - Heavy duty, Craftsman, tilt arbor, excell. cond. Cost \$65 - will sell for \$30 or best reasonable offer. Jud Davis, Ext. 2712.

COMBINATION STEREO-TV - Macy's own, beautiful cabinet. LT 9-0997 after 6:00 p.m.

REFRIGERATOR - Old Westinghouse, runs well but too small for us. Ideal for basement rec. room. Best offer gets it. J. Oosting, Ext. 2543 or AT 6-9107 anytime.

POWER MOWER - Reel type, gasoline driven, self-propelled, 21" cut, good cond. \$25. R. Larson, Ext. 2469.

HI-FI SPEAKER SYSTEM - 36 6½ in. speakers with 2.15 oz. Alnico magnets plus 2 compression horn tweeter all mounted in a walnut stained ¾ inch braced fir plywood cabinet. Measuring 58" x 36" x 8" deep. Response 30-16,000 cps; handles 80w program material. Entire system weighs approx. 150 lbs. Asking \$150. C. Porter, Ext. 385.

FRIGIDAIRE DRYER - Brand new, all. elec. Never used, will not convert to our gas system. Paid over \$200. Will sell for \$175. Ext. 2327.

BABY CARRIAGE - Blue, \$10. Bredin, Ext. 2218.

AIRPLANE - 1940 Taylor Craft BL-65. Licensed through September, 1963. Very good cond. May be seen at Mastic Air Strip. Reasonably priced. YA 4-6304.

#### WANTED

DEEP WELL PUMP - Piston or rod electric, with or without motor. Ext. 2120 or AT 1-9070.

REFRIGERATOR - Good cond. at reasonable price. Our new house hasn't one, our old one did. J. Oosting, Ext. 2543 or AT 6-9107.

FEMALE ROOM-MATE - August 1. HR 3-3876 after 5:30 p.m.

JOB - Husky college boy wants job from June 10 through June 30. Carpenter, painter, etc. Good worker. AT 6-0682 between 6:00 and 7:00 p.m.

#### FOR RENT

HOUSE - Patchogue, North of Sunrise, furnished, 5 rooms & bath. All utilities, 2 car garage, fenced in. \$125. Al, Ext. 2419.

APARTMENT - Farmingville, 4 rooms, unfurnished, all utilities incl. Luccioni, Ext. 560 or SE 2-6342.

#### CARPOLS

Drivers needed for carpool from Wantagh Avenue and Southern State Parkway, Wantagh. Don, Ext. 543 or Bob, Ext. 2152.

Paying rider wants to join carpool from vicinity of Cumberland Road, Hicksville. WE 8-0828.