

the Bulletin Board

VOLUME 16, NUMBER 47

Published by the BNL Personnel Office

AUGUST 13, 1963

BERA FILM SERIES

BONUS MOVIE

PRIVATE'S PROGRESS

Thursday., Aug 15, 8:30 p.m., Lecture Hall

Director: John Boulting. Producer: Roy Boulting. Starring: Richard Attenborough, Dennis Price, Terry-Thomas, Ian Carmichael, Peter Jones, William Hartnell, Thorley Walters and Jill Adams.

"The funniest movie of the year" was what the American press called the Boulting Brothers' "Private's Progress." The British War Office, on the other hand, felt that the movie might ruin the Empire's prestige in the United States. Dedicated to "all those who got away with it," and dealing with sharp-witted spies, opportunists and black marketeers who made a good thing out of wartime military service, "Private's Progress" is a monument to more than one kind of individual enterprise: the producers "gratefully acknowledge the official cooperation of absolutely nobody."

Among the priceless comic characterizations are those of Richard Attenborough as a wily Cockney, Ian Carmichael as the private who drives the Army psychiatrist to his psychiatrist, Terry-Thomas as major of a unit of "absolute shirkers," and Dennis Price as chair-borne Brigadier Tracepurcel.

"This is the funniest movie of the year" . . . New York Herald Tribune; "A must, funnier than 'No Time for Sergeants' and infinitely more clever" . . . New York Daily Mirror; "A hilarious satirical comedy" . . . Cue.

Remember, this is a bonus film. All series ticket holders will be admitted free. Those who purchase series tickets at the door will also be able to see the movie free of charge. Series tickets are \$7.50 and are valid for any ten films for a period of two years from the date of purchase.

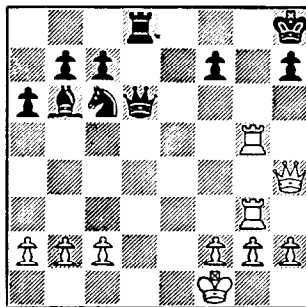
BNL VISITORS

A group of students from Rensselaer Polytechnic Institute will be spending two days, August 15 and 16, visiting the Laboratory's Nuclear Engineering Department.

A number of Air Force Reserve Officers will tour the site on August 12.

CHESS PROBLEM

In this week's problem it is white's move. White has to be careful because Q - B8 means mate. So, what to do?



Answer elsewhere in this week's BULLETIN BOARD.

BOWLING CALENDAR

AUGUST

- 23 Expiration of entry priority
- 30 Deadline for all team entries

SEPTEMBER

- 3-4 League team captain's meetings
- 10 Executive Board meeting
- 16 Season starts.

CAFETERIA SPECIAL

THURSDAY, AUGUST 15

- Cantaloupe
- Breaded Veal Cutlet with Tomato Sauce
- Mashed Potatoes & String Beans
- Tossed Green Salad
- Strawberry Shortcake
- Nuts & Mints
- Beverage
- \$.99**

NEW FIRE DEPARTMENT VEHICLE



Fire Chief William Wisnofski and Dr. Clarke Williams, Deputy Director, examine emergency equipment on new Fire Department acquisition.

Pictured above is the new Fire Emergency Vehicle which was recently delivered to the Laboratory Fire Department. It will serve as a replacement for a 1942 model truck that was converted in 1947 for emergency use.

The new vehicle, on a 1963 Ford V-8 chassis, has a semi-canopy enclosed body and is equipped to cope with possible on-site emergencies. Its special features include a resuscitator, a front-end power winch and A-frame, and a portable generator and auxiliary lights, as well as a wide variety of emergency tools and equipment

KEVEY-HONECK CAPTURE TENNIS DOUBLES

In '62 they were second-best as they lost in the finals to Merkle and Auskern (6-3, 7-5), but last Thursday Andrew Kevey and Henry Honeck went all the way and defeated the Monaro-Scott team in the final round of the 1963 BNL Men's Doubles Tournament.

The first set, won by Kevey and Honeck 7-5, led us to believe we were in for a long, close match. But the winners rolled easily over their opponents 6-0 for the second set and match. Kevey's passing alley drives and Scott's determination highlighted the match.

Trophies were awarded the winners by George Sabine on behalf of B.E.R.A.

A word of thanks goes to Jim Stangby, Walt Merkle, and Steve Feldberg, who assisted in the officiating.

Men's Singles - Thurs., Aug. 15, 5:15 p.m.

PERSONNEL SERVICES

Recreation Office - 3 Center Street

Daily 9:00 a.m. - 1:00 p.m.

DISCOUNT TICKETS AVAILABLE FOR:

- Jones Beach Marine Theater
- Westbury Music Fair
- Mineola Playhouse
- Freedomland
- Ice Capades of 1964
- Long Island Fair

METS BASEBALL TICKETS:

Sold out through the month of Aug., but some tickets still available for September dates.

CHILDREN'S SUMMER PROGRAM

This past Friday, the On-Site Children's Summer Program featured its annual Junior Olympiad. Races and contests were enjoyed by children of all ages. In the 5-6 year-old group, there were a host of winners. Among them were Danny Sandweiss, Amy Gluckstern, Neal Beshler, Maria Gerholm and Steven DiFerrante, to name a few. Greg Waugh, Jerry Margolis, Karen Kalbfleisch, Martha Purcell and Jesse Lederman were among the winners in the 7-8 year bracket. In the older division, first-place finishers included Mette Skovgaard, Tom Woods, Ellen Fireman and Barbara DiFerrante.

Next week, the Program will host badminton and ping pong tournaments for the children. And on Friday, the special attraction will be a combination treasure hunt and hike, which will leave the Recreation Building at 9:15 a.m. During the week there will also be numerous other contests and games.

Arrivals and Departures

WELCOME TO BNL

AGS	Frank Marshall	Ext. 2563
CHEMISTRY	Jonusz Gebicki	605
COSMOTRON	Stella M. Deery	2320
	George C. Warner	2511
MEDICAL	Ralph W. Boardman	2912
	Ormonde Brown	
MECHANICAL ENGINEERING	Richard W. Savage	
NUCLEAR ENGINEERING	Christopher Agritellis	2228
	John H. Petropoulos	
PHYSICS	Joseph T. Russo	

RECENT DEPARTURES

CHEMISTRY	Kenneth E. Collins
MEDICAL	Dean B. Chamberlain
NUCLEAR ENGINEERING	Carol H. Collins
SUPPLY & MATERIEL	Barbara H. Durciansky

CLOSE RACE IN ZEBRA LEAGUE

With four weeks remaining in its schedule, our summer mixed bowling league has five teams struggling for the first and second place awards. At the present time, the Maybes are narrowly leading the field by a mere two points. The current standings are as follows:

	WON
Maybes	29½
A's & B's	27½
Mistakes	26
Rinky Dinks	23
Screwballs	20
Woodsmen	15
Comets	13
Nonames	6

The last week of regular summer bowling begins September 3. On September 10, the league will conclude its season with a Sweepstakes Night featuring a buffet supper and trophy presentation by Bowling Executive Board President Jerry Weiss.

SOLUTION TO CHESS PROBLEM

White wins with . . .

WHITE	BLACK
1. R - Q5	Q x R
2. Q - B6 mate.	
or	
1. R - Q5	Q - K2
2. Q x Q etc., etc.	

POOL EVENTS

The annual Pool Penny Fetch was held on Friday afternoon, August 9. In the younger group, Jim Schwartz recovered a grand total of twenty-five pennies from the depths of the pool, with Gary Kelley a close twenty-two penny second. In the older division, Brian Roesh recovered the high total of fifty-four, and easily out-distanced his closest competitors, Jim Wegner and Eric White, who came back with twenty-three and twenty-two pennies, respectively.

In the annual Inner Tube Derby on Friday, Ernst Colsman managed to hold out on Dave Pate in a thrilling race. Behind by almost thirty-five feet at one point, Dave was behind by only inches at the end of the race.

Friday, August 16, at 3:00 p.m.: Surprise Special for Children at the pool.

BULLETIN BOARD CLASSIFIED

AD POLICY

1. Employees only may place ads in THE BULLETIN BOARD.
2. All items advertised for sale must be property of an employee.
3. Real estate ads will be accepted only when they involve change of residence by an employee, and are accompanied by a statement of ownership and change of residence.
4. No ads for business purposes will be accepted.
5. Ads must be submitted in writing (preferably typed) by 3 p.m. Friday for inclusion in the next week's newspaper. Address the ads to THE BULLETIN BOARD, 58 Brookhaven Avenue, or deliver them to the Personnel Office. Ads must contain a signature and Laboratory telephone extension. If you do not want your name to appear when the ad is printed, put it in parentheses.
6. Ads are run on a space available basis. If your ad does not appear due to space reasons, it will be held for inclusion in the next issue of THE BULLETIN BOARD.
7. If you wish to repeat an ad, it must be resubmitted.

BNL IDENTIFICATION CARDS

All employees are responsible for seeing that their BNL I.D. Cards are always in good condition. Please check yours. If the card is soiled, broken or cracked, or if your photograph is old or description inaccurate, please report to the Security Office for a replacement.

AROUND THE BASE PADS

by - Bob Carciello

The pennant race in the Brookhaven League is finally over regardless of the fact that Cosmotron handed the Blue Jays their first league defeat of this season, 10-7. The Blue Jays, however, have clinched the trophy. The situation is quite different in the National League. The Dirty Sox are 11-3 with one game left to play while Medical is 9-4 with two games left to play. A loss by Dirty Sox and two wins by Medical will send the two teams into a play-off game before the All Star Game. The Chamber Chaps extended their string to 12-0 by downing the Mets, 33-9. This victory clinched the number one spot for the Chaps in the Laboratory League

Results last week: Cosmotron 10 - Blue Jays 7; Blue Jays 14 - Phoubars 3; Metallurgy 15 - Phoubars 7; Bubble Boys 17 - Old Timers 10; E.A.O. 12 - Medical 11; Dirty Sox 17 - Upton Downers 8; Potsareebies 25 - Chasers 19; Chamber Chaps 33 - Mets 9. Neither Electronics or Untouchables showed up for their scheduled game on August 6th so both teams are charged with a loss.

BROOKHAVEN LEAGUE

STANDING	WON	LOST	Pct.
Blue Jays	12	1	.925
Cosmotron	8	5	.616
Untouchables	6	6	.500
Metallurgy	6	8	.428
Electronics	4	8	.333
Phoubars	2	12	.142

NATIONAL LEAGUE

Dirty Sox	11	3	.785
Medical	9	4	.692
Bubble Boys	8	5	.615
E.A.O.	6	7	.461
Old Timers	3	10	.230
Upton Downers	3	11	.214

LABORATORY LEAGUE

Chamber Chaps	12	0	1.000
Odd Balls	8	4	.666
Potsareebies	7	7	.500
Kludge	4	8	.333
Mets	4	9	.308
Chasers	3	10	.230

SOFTBALL

ALL-STAR GAME

5:15 P.M.

AUGUST 28



MEN - LADIES

FORM YOUR BOWLING

TEAM NOW!



BNL league bowling is one of the most enjoyable winter activities available. Our leagues bowl once a week, and there is no conflict with later social events, since the games start at 6:00 p.m. There will be leagues on both the North and South Shores, with a choice of three or more nights of the week. The cost is low - \$3.50 entry fee plus the actual cost of the games bowled. No charge for missed games. No dues. You don't need a bowling ball - the alleys have a large selection for your free use. Shoes are available for a nominal rental fee, or you can buy your own pair for as little as \$5.00. Scoring is on a handicap basis, for poor bowlers, new bowlers, or never-bowled-before bowlers are as welcome as those with pro-class averages.

Get the details now and enter early! Team entry blanks and further information are available at the Recreation Office, 3 Center Street. If you can't get enough bowlers together to form a team, give your name to George Sabine and he will put you on a list with other potential team members.

CLASSIFIED ADS

FOR SALE

1956 RAMBLER - Wagon. 1960 motor, stand. trans., r&h, 2 snow tires with wheels. \$375. Carol, Ext. 574 or 281-9467 after 6 p.m.

1959 FORD - Consul sedan. Four cyls., 30 mpg, low mileage, r&h. Ext. 2873 days; after 5 p.m., Ext. 720.

1947 FORD - Pick-up. AT 6-8712 after 6 p.m.

1958 VOLKSWAGEN - Rebuilt motor, new tires, new paint, brakes. VW serviced. Best offer over \$875. T. Moran, Ext. 570.

1954 MERCURY - Monterey, 2 dr. 1957 rebuilt Ford engine. Dual exhaust, stand. trans., r&h, 4 barrel carb. \$150. or best offer. R.G. Miller, Ext. 561 or 878-2678.

1956 CHEVROLET - Bel Aire Conv. with new top. 1962 Corvette engine, three 2-barrel carbs, full race cam., 4 speed floor shift. 4:11 posi-tract. rear end. Must sell. \$1100. or best offer. R.G. Miller, Ext. 561 or 878-2678.

1959 PEUGOT - Sunroof. Very good cond., w/w tires, 59,000 miles. Owner leaving country August 21. N. Odartchenko, Ext. 2910.

1960 HILLMAN MINX - Four door hardtop. Two tone, excell. cond. Asking 600. Ext. 2382.

1958 VOLKSWAGEN - Sunroof, in good cond. \$400. Avail. Aug. 26. G. Stocklin, Ext. 732.

1962 RENAULT - Dauphine Gordini. Reclining seats, sunroof, heater, 4 new tires. 40 hp engine. Owner leaving Lab. Offers? V. Emery, Ext. 2835 or 513 evenings.

1962 CHEVROLET - Impala hardtop. W/w tires, V-8, fully equipped with stand. trans. White with turquoise interior. A. Czarnecki, Ext. 363.

1953 FORD - Four door, excell. running cond., everything works! \$60. GR 5-7464 days or see at 32 Lewis Ave., Patchogue.

1958 BUICK - Convertible. All powered, good cond. Sacrifice. B. deSereville, Ext. 2850 or 2785.

1960 FORD - Fairlane 500. Four door sedan, 6 cycl., Fordomatic, r&h, 31,000 miles. Excell. cond. inside and out. New muffler and universal. \$1,100. 281-8253 or Ext. 639.

1959 HILLMAN MINX - Conv., excell. cond. low mileage. Avail. Sept. 3. M. Williams, Ext. 550 or SH 4-5359.

1955 PONTIAC STATION WAGON - Stand. trans., r&h; body rusting but engine good. \$250. Kuper, Ext. 542.

1960 FORD - Station wagon. Excell. cond., r&h, winter tires. First owner, leaving country. H. Cottier, Ext. 2881 or 751-1209.

1962 CHEVROLET - Biscayne station wagon. Stand. trans., 8 cycls., r&h, w/w tires. 20,500 miles. Sacrifice. Ext. 2107.

1956 RAMBLER - Sedan, 6 cyls., stand. shift, reclining seats - ideal for camping, seat belts. Good condition. Asking \$275. K. Riley, Ext. 2614.

1957 PLYMOUTH - Four door sedan. Excell. cond., owner leaving States. K. Scott, Ext. 315.

1960 VOLKSWAGEN - R&h, w/w tires, fuel gauge. Excell. cond. 33,000 miles. Ext. 616 or AT 6-9364.

1956 CHEVROLET - Engine and all mechanical parts in excell. cond. \$300. Avail. August 22. Purdie, Ext. 614.

MOTORCYCLE - 1956 BMW, twin, 500 cc 26 hp \$495. Also, 1957 Chevrolet 6 cyl. engine Complete, runs. Bell housing for stand. trans. \$50. J.R. Pappa, Ext. 2411.

ROWBOAT - Old Town 14' lapstraked, with oars, in good cond. \$90. Woods, Ext. 2259 or Ext. 729 after 5:30 pm.

OUTBOARD CRUISER - Olympia 22' with 60 hp Scott engine. Starter, generator, bailomatic, 2 bunks, enclosed head, galley, full canvas. Refinished, must sell. Asking \$1050. Call 878-1777.

RUNABOUT - 1960 M.F.G. 15' with fibreglass and mahogany construction. 1961 40 hp Johnson motor and tee-nee trailer - package deal, ready to go. Tony, Ext. 2677 or CE 4-3775.

SAILBOAT - Jet 14. New cond. molded mahogany construction, SS rigging, racelite fittings, trailer. A true planing boat. Priced to sell. B. Kehl, Ext. 2677 or SH 4-9861.

SAILBOAT - 21' Mallard-class centerboard sloop. Large cockpit, cabin with two bunks, Seagull Century outboard. \$1075. Wiswall, Ext. 2101.

SLOOP - 12'8" round bottom. C.B. Strip-built mahogany with dacron sails, SS rigging and hardware, Sitka Spars built to last a lifetime. Must sell - down to \$550. Have pictures on site. Paul, Ext. 596.

RUNABOUT - 15' M.F.G. fibreglass. Navy top, canvas cover, 40 hp elec. Mercury. Excell. cond. P. Freudenthal, Ext. 454 or PY 8-7507.

HOUSE - Cape Cod, five years old, 4 bedrms. 2 baths, full basement. Baseboard oil heat, alum. storms. Located in Miller Place ½ mile from beach and schools. HR 3-2753.

HOUSE - Patchogue Village. Six rms., screen porch, garage, elec. stove, oil heat, tile bath, walk-in pantry, oak floors. \$11,000. GR 5-2829 after 6 pm.

HOUSE - Colonial, 4 bedrms., 6 yrs old. Port Jefferson (Harbor Hills). 2½ baths, built-in range, oven, and dishwasher, matching re-frig. Dining-room, heated full cellar, combo storms and screens. Private beach rights, near school. On attractive ½ acre. Good financing avail. \$23,900. Ext. 2449 or HR 3-2281.

GAS STOVE - Magic Chef four burner. One year old, avail. September. Ext. 2107.

BROOMSTICK - Electric. \$15. K. Riley, Ext. 2614.

COMMUNICATIONS RECEIVER - Heath Mo-hican transistorized. New, much improved over original specifications. \$130. J. Llacer, Ext. 618.

ICE SKATES - Used only one week. Man's size 8, \$8.; children's single blade size 13, \$4.; children's double blade, sizes 13, 10, \$4. ea. Ext. 2873 or 720 after 5 pm.

MARINE ENGINES - Two, one 4 cyl. Palmer, \$75., and one 4 cyl. Kermath for parts, \$40. AT 6-8712 after 6 pm.

ENCYCLOPEDIA - Colliers 1962 edition with 1963 year book incl.. New \$370., asking \$250., Ext. 2258.

CLOTHES DRYER - Hotpoint, 2½ years old, excell. cond., must sell. GR 5-1584.

LAWN MOWER - Craftsman 18" with Briggs & Stratton 2½ hp motor. Good cond. GR 5-1584.

BICYCLE - Girl's 20". \$5. Ext. 2394.

TENT - 6x6' (2 center poles) with bottom and mosquito net. Complete with ice box. Both for \$20. G. Stocklin, Ext. 732.

SCUBA Tank - Voigt regulator, J-valve, backpack. Also wet suit, flippers, weight belt, SAETTA spear gun, wrist depth gauge/com-pass. \$95. B. DeVito, Ext. 2344.

TV - Radio-Phono comb. Motorola in mahogany closed-in cabinet. Phono needs small repairs. Asking \$40. GR 5-2829 after 6 pm.

WEDDING GOWN - Handmade, size 14. Satin with embroidered lace. Hand beaded with pearls and crystals. Also, head piece. Will sell for \$50. Cost of material was \$70. GR 5-2829 after 6 pm.

COLD WATER PRESSURE TANK - 82 gals. Glass water level gauge, and new air release valve float. Yours for the asking. Call G. Kiriokos, Ext. 422.

CAMPER TRAILER - 1963 Ted Williams. Includes propane stove and lamp, two aluminum beds, six sleeping bags. First owner, leaving country. H. Cottier, Ext. 2881 or 751-1209.

TYPEWRITER - Royal standard 12" carriage. Model No. KH. \$45. or best offer. B. Keck, Ext. 752.

PORTABLE RADIO - Ten transistor AM and Short Wave; brand new. \$30. Sadofsky, Ext. 2709.

PIANO - Baldwin acrosonic. \$450. Also, antique organ, \$145. Sven, Ext. 687 or LT 9-1287.

ANTIQUE FURNITURE - Empire couch, mahogany with lovely carvings. \$35. Also, Rosewood table with marble top, \$50.; mahogany dresser, \$65. All in good cond. L. Davis, Ext. 2133.

TIRES - Four 670-15 mounted on rims. Bargain priced at \$30. Tires have only 1500 miles use. J. Mead, Ext. 2212 or AT 9-1831.

TIRE - 7.50x14. Like new, tubeless, driven less than 2,000 miles. Best offer, S. Kaplen, Ext. 2732.

FOR RENT

APARTMENT - Three rooms, furnished, all conveniences. Year round rental. Private entrance. SH 4-9724.

APARTMENT - Four rooms, all utilities incl. Located in Farmingville, 9 miles from Lab. \$105 per mo. SE 2-6342.

BUNGALOW - Ideal for couple, all year round, walk to beach, nice section. WA 9-4443 after 5:00 pm.

COTTAGE - Furnished, two bedrms., situated by Yaphank Lake, 10 minutes from Lab. \$50. per mo. Avail. Sept. 9th. K. Scott, Ext. 315 or R. Bachmann, YA 4-6656.

HOUSE - Furnished, two bedrms. South Haven on Mantauk Hwy. \$125. per mo. Avail. Sept. 15th. Mrs. Bartsch, AT 6-0583.

GARDEN APARTMENT - 4½ rms., in Hauppauge-Smithtown area. Immed. occupancy, 10 mo. lease. Free air conditioning; within walking distance to school. \$156. per mo. AN 5-4925 between 5 and 7:30 pm.

HOUSE - Bellport, furnished, for year beginning Sept. 15, 1963. R.A. Beth, AT 6-8215.

HOUSE - Bellport, close to schools and stores. 7 bedrms., 3½ baths. Avail Sept. 1 through school year. AT 6-1094.

WANTED

RIDER - To share driving and expenses to Chicago, week of Sept. 9. L. Berlent, Ext. 2658.

ORGANIST - To play for local church. Tillingier, Ext. 542.

PLAYPEN - Used. T. Ludkewycz, Ext. 786 or 2200.

ROOMMATE - Single girl to share comfortable apartment in Mt. Sinai. Private entrance, 5 min. from shopping. \$50. per month, incl. utilities. Ext. 2180 or HR 3-3876 after 5:30 pm.

HOUSE TO RENT - Vicinity of Patchogue. Furnished, 1-2 bedrooms. 1-2 yr. lease, beginning Sept. 1963. Brandes, Ext. 301-37.

BABY SCALE - Call Bresciani, AT 6-0188.

RUSSIAN LANGUAGE STUDENTS - Anyone interested in taking a second year Russian course at Suffolk County Community College call Mrs. F. Bresciani, AT 6-0188.

BABYSITTING JOBS - Reliable woman will watch children of working parents in her home. 281-8287.

SMALL TENT - Suitable for two people. Ext. 2671.

RIDE - To Chicago and points N.W. around September 5. I. Zbitnoff, Ext. 2688.

HOUSE OR APARTMENT TO RENT - Furnished, two bedrooms, beginning September 1. L. Padwa, Ext. 2441 or S. Kaplan, Ext. 2732.

CAR POOLS

DRIVER - To complete existing carpool from Miller Place. Bob, Ext. 2152 or Jim, Ext. 2191.

Would like to join or form carpool from Patchogue, vicinity of So. Ocean Avenue. W. Creller, Ext. 301-38.

Would like to join or form carpool from Great Neck area. L. Meshel, Ext. 2747.

DRIVER - To join existing two-man carpool from Washington Avenue, Patchogue. M. Reynolds, Ext. 2816.

LOST

GOLD PIN - With pearls, in the shape of a branch with leaves, Nancy, Ext. 388.