

# the Bulletin Board

VOLUME 16, NUMBER 52

Published by the BNL Personnel Office

SEPTEMBER 17, 1963

## BERA FILM SERIES LAST YEAR AT MARIENBAD



Thursday, Sept. 19, 8:30 p.m., Lecture Hall

Without a doubt, "Last Year at Marienbad" is the most demanding film in many years. Director Alain Resnais has broken with all traditions of cinema chronology in telling his story: the events, as they are portrayed, are not only shown as they happened, but also as the characters would have liked them to happen. The past is fused with the present and the future, and real scenes merge with those imaginary ones in the minds of the characters.

"Be prepared for an experience such as you've never had from watching a film . . . when you stagger away from it, you will feel you have delighted in (or suffered) a unique and intense experience. The artfulness of this picture is in its brilliant photography, with its sumptuous setting and staging, in its hypnotic rhythmical flow and in the radical use of actors almost as models within the architectural frame . . . try to make some sense of it and it is likely to drive you mad." —NEW YORK TIMES

"'Marienbad' is not a movie in the accepted sense of the word; it is an enigma, the most monstrously elaborate enigma ever conceived in terms of cinema . . . From first frame to last, the film goes bouncing like a ping pong ball in washing machine . . . Even moviegoers who dislike the picture will feel irritably impelled to discuss, to analyze, to interpret what it means." —TIME MAGAZINE

"In this picture, one of the most significant this year, Resnais again reveals himself as one of the few movie makers who can make poetry of our times."

—N.Y. HERALD TRIBUNE

A short subject will also be shown.

## TWENTY-NINTH BROOKHAVEN LECTURE

by Samuel J. Lindenbaum  
Physics Department

Title:

"Collisions of 'Elementary' Particles  
With Protons at High Energies"

Lecture Hall, 8:00 p.m., Wed., Sept. 25

A buffet supper (\$2.75) will be served at the Brookhaven Center before the lecture, beginning at 6:00 p.m. Reservations should be made at least one day in advance by calling Ext. 2302 before 5:00 p.m. or Ext. 2453 in the evenings.

Refreshments will be available in the Exhibit Hall Lobby following the lecture.

## BROOKHAVEN LECTURES

The Brookhaven Lectures will resume this month. In welcoming you back to this continuing monthly series, it is appropriate to remind you that the purpose of these lectures is "to provide an intellectual meeting ground for all scientists of the Laboratory" by acquainting them with new developments and ideas not only in their own fields of specialization but also in other important fields of science, and thereby to increase awareness of the aims and potentialities of Brookhaven National Laboratory.

As in the past, the lectures will be presented on Wednesday evenings close to the middle of the month. Each lecture will be preceded by a buffet supper at the Brookhaven Center (for which advance reservations are required). The lectures have usually had a duration of about one hour and have been followed by a discussion period in the Lecture Hall and talk-over refreshments in the Exhibit Hall lobby.

Invitations to present a Brookhaven Lecture are accompanied by a request for a manuscript. Under the editorial guidance of Mrs. Margaret Dienes, these manuscripts are published by the Laboratory. Many of the previous lectures are now available in handsomely printed and bound form. They may be obtained upon request from Mrs. Maria Tasso of the Information Division. If you wish to receive copies of all the lectures as they are published, Mrs. Tasso will place you on a permanent mailing list.

(Continued Next Page)

## QUASTLER ART EXHIBIT TO BE HELD

The South Bay Art Association is sponsoring a retrospective exhibit of the works of Gertrude Quastler, who died this year on July 4. The exhibit will be held at the Bellport Community Center on Bell Street from September 26 through September 29 and will be open each day from noon until 9:00 p.m.

Gertrude Quastler was very well known as a print maker. Her work is in the permanent collections of the New York Museum of Modern Art, the Boston Fine Arts Museum, the Cambridge Fogg Museum, the Chicago Art Institute, the Library of Congress, and many others. She had one-woman and group shows in Chicago, Boston and Philadelphia. Her work has been shown in numerous exhibits throughout the country and has been included in traveling exhibits in Europe and Asia. Life Magazine has shown her woodcuts.

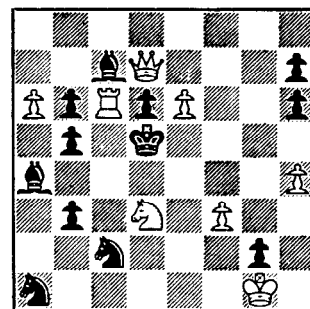
The Bellport exhibit will interest many people, since Mrs. Quastler worked in a great variety of media: oil, water color, gouache, silk screen, monoprints, textiles, wallpaper, wire and wood sculpture, wood carving and collage. Several examples of each will be shown.

Also included in the exhibit will be some gouaches and sculpture done by Mrs. Quastler's husband, Henry, who was a scientist at the Laboratory.

Part of the proceeds from the sale of the art works will be used to establish a scholarship in Mrs. Quastler's memory.

## CHESS PROBLEM

In this week's problem it is White's move. He can mate in three moves. How? Answer elsewhere in this week's BULLETIN BOARD.



**Brookhaven Lectures (continued)**

The undoubted success of the lectures has been due to the excellence of the presentations. We are naturally anxious to maintain the standards set by the previous lectures and therefore welcome any comments or criticisms you may have for the improvement of the presentations. We would also welcome any views you may have on possible topics or speakers for future lectures. Such comments and criticisms would be considered valuable help in the work of the committee.

We take pleasure in announcing the speakers for the next four Brookhaven lectures:

- Sept. - S.J. Lindenbaum, Physics
- Oct. - J. Bigeleisen, Chemistry
- Nov. - J. Chernick, Nuclear Eng'g
- Dec. - H.J. Curtis, Biology.

The Committee: M. Hildred Blewett, Accelerator Dept.; Robert L. Chase, Instrumentation and Health Physics Dept.; N. Corngold, Nuclear Engineering Dept.; Lewis K. Dahl, Medical Dept.; Gertrude Goldhaber, Physics Dept.; C.H.W. Hirs, Chairman, Biology Dept.; Robert Marr, Applied Mathematics Dept.; and Max Wolfsberg, Secretary, Chemistry Dept.

**CAFETERIA SPECIAL**

**THURSDAY, SEPTEMBER 19**

- Small Juice
- Celery & Olives
- Baked Sugar-Cured Ham
- Sweet Potatoes & Green Peas
- Strawberry Shortcake
- Nuts & Mints
- Beverage
- \$.99**

**FOLK SING**

A weekly folk sing is being held on Tuesday evenings at the Recreation Hall. Lessons are given from 7:30 to 8:30 p.m. for all grades from beginners to Baezs, with group singing afterwards. Bring your guitar, banjo, mandolin, autoharp, bass, earth bow, and/or voice for an evening of musical fun. For information, call J. Oostings, Ext. 2543, or J. Powell, Ext. 789.

**OUTING CLUB**

There will be a meeting on Thursday evening, September 19, at 8:00 p.m. in the Recreation Building for those interested in forming an Outing Club devoted to mountain climbing, canoeing, spelunking, etc. The Club will provide a place to meet and arrange trips. For further information, contact J. Powell, Ext. 789.

*Arrivals and Departures*

**WELCOME TO BNL**

BIOLOGY	Barbara A. Cartwright	Ext. 2259
INFORMATION	Madeline P. Windsor	2273
MEDICAL	Claire F. Hull	301-40
	Gail L. Iseley	301
NUCLEAR ENGINEERING	Akuchi Kigoshi	2737
PLANT MAINTENANCE	Alexander H. McCatty	586
	Charles Patrick	2389
PHYSICS	Akio Honma	2607
	Jeanne A. Simone	
REACTOR	Sonja Klimek	2204
SUPPLY & MATERIEL	Dorothy Bauer	2164

**RECENT DEPARTURES**

BIOLOGY	Roy Davies
	Yashwant Karkhanis
	Harvard Lyman
FISCAL	Mary Zuccarello
MEDICAL	Hooney C. Kahng
NUCLEAR ENGINEERING	James Dwyer
PHYSICS	Neil Webre
	Thomas J. Ypsilantis

**PERSONNEL SERVICES**

**RECREATION OFFICE - 3 CENTER STREET**  
**Daily 9:00 a.m. to 1:00 p.m.**

**RENTAL LIBRARY**

A new selection of books has arrived for your reading pleasure. Among them are:

Everything But A Husband.....	J. KAMINS
Elizabeth Appleton.....	J. O'HARA
Freedom Observed.....	G. GRIFFIN
Gabriela.....	J. AMADO
The Glass Blowers.....	D. DU MAURIER
Golden Hammer.....	S. ARNONE
The Group.....	M. MCCARTHY
Harm's Way.....	J. BASSETT
If A Man Answers.....	W. WOLFE
Jimmy Riddle.....	I. BROOK
The Living Reed.....	P.S. BUCK
The Moonflower Vine.....	J. CARLETON
No Adam In Eden.....	G. METALIOUS
The Right Line of Cerdic.....	A. DUGGAN
The Right To An Answer.....	A. BURGESS
Salt.....	H. GOLD
The Secret War.....	S. DE GRAMONT
The Shoes of The Fisherman.....	M.L. WEST
A Season of Mists.....	H. TRACY
Shapes of Clay.....	D. HALLER
Triumph.....	P. WYLIE

**SUMMER BOWLING ENDS**

The first BNL Mixed Summer Bowling League concluded its season with sweepstakes and a buffet at the Port Jeff Bowl on Sept. 10. Trophies were awarded as follows:

**First Place Team:** Maybes (Ellen and Lew Jacobsen; Terry and Bob Wessel)

**Second Place Team:** Mistakes (Flo and Ken Weiss; Madeline Keller and Jim Mallins)

**High Average:** Flo Weiss (154) and Bob Wessel (175)

**High Series:** Pat Towey (495) and Jack Austen (579)

**High Game:** Carol Baker (209) and Gerald Warner (209)

**Most Improved:** Ellen Jacobsen (26 pins) and Jim Mallins (21 pins)

**666 Club:** Pat Towey (696), Ron Dobert (691), and Jim Mallins (682).

The sweeps winners were: Elaine Daniels, 4 game gross of 793; Dolores Janes, 210 gross game; Len Baker, 4 game gross of 814; and Jim Mallins, 243 gross game.

The entire League expressed its thanks to Bill Bishop for a fine job all summer as League secretary.

**UPTON RIFLE-PISTOL CLUB**

The U.R.P.C. will have its first small-bore rifle match in the Long Island Industrial League on Wednesday evening, September 25.

All interested members are urged to be at the Patchogue Armory on Tuesday evening, September 24, between the hours of 7:00-10:00 p.m. for final instructions and match preparation.

Please call P. Colombo, Ext. 624, or A. Lukas, Ext. 769, for further information.

**BNL FLYING CLUB**

There will be an organizational meeting of the BNL Flying Club in Dave Edwards' office at 9 Center Street on September 27 at 5:00 p.m. All interested persons are invited to attend.

**SOLUTION TO CHESS PROBLEM**

WHITE	BLACK
1. Q - N7	K x R
2. Q - B3 check	K - Q4
3. N - B4 mate	
	OR
1. Q - N7	K x P
2. R x B	K - B4
3. Q - B7 mate	
	OR
1. Q - N7	N - Q5
2. Q - K5 check	P x Q
3. N - N4 mate.	

## EXPECTANT MOTHERS' CLASSES

A new series of Expectant Mothers' Classes, sponsored by the Suffolk County Department of Health, is scheduled to begin September 26 at 2:00 p.m. in the Ross Building on the grounds of the Suffolk County Community College. The series will include eight classes which will be held each Thursday afternoon through November 14. Certificates are awarded upon completion of the course.

Breathing and relaxation exercises which help facilitate delivery will be included. Any expectant mother who is past the third month of pregnancy, who wishes to participate in this portion of the class, may do so with written permission from her physician.

This is a free service. Mrs. Loretta A. Scott, R.N. will conduct the classes. Please register by calling SElden 2-3949 or write to the Suffolk County Department of Health, Box 97, Selden, New York.

## BULLETIN BOARD CLASSIFIED AD POLICY

1. Employees only may place ads in THE BULLETIN BOARD.
2. **All items advertised for sale must be property of an employee.**
3. Real estate ads **will be accepted only when they involve change of residence by an employee, and are accompanied by a statement of ownership and change of residence.**
4. No ads for business purposes will be accepted.
5. **Ads must be submitted in writing** (preferably typed) **by 3 p.m. Friday** for inclusion in the next week's newspaper. Address the ads to THE BULLETIN BOARD, 58 Brookhaven Avenue, or deliver them to the Personnel Office. Ads must contain a signature and Laboratory telephone extension. If you do not want your name to appear when the ad is printed, put it in parentheses.
6. Ads are run on a space available basis. If your ad does not appear due to space reasons, it will be held for inclusion in the next issue of THE BULLETIN BOARD.
7. If you wish to repeat an ad, it must be resubmitted.

## UPTON RIFLE & PISTOL CLUB

All those interested in large bore rifle shooting are invited to enter a tournament scheduled to start on Sunday, October 6 at 2:00 p.m. The club will provide rifles for those who don't have their own. There will be a meeting on Thursday, September 19, at 12:15 p.m. in the Recreation Building to discuss the

matches. Further information can be obtained from Robert Rasmussen, Ext. 2389.

## BULLETIN BOARD NOTICE

For all future BULLETIN BOARD questions, please contact Janet Whitehead or Marianne Clasen at the Personnel Office, Ext. 2109 or 2513.

## CLASSIFIED ADS

1957 FORD - Convertible. 6 Cyl., stand. shift, new tires, new battery, excell. cond. \$450. SE 2-3338.

1959 TRIUMPH - TR3A, r&h, w/OD, special cast aluminum sump, wire wheels, tonneau cover, \$1000. T. Schreiner, Ext. 2208, 2353 or JU 1-5581 anytime.

1958 CITROEN - New tires, paint, axle, brakes, seals, starting motor, and regulator. No rust, no rot, 56,000 miles. \$700. Ext. 622.

1953 PONTIAC - Sedan, auto. trans., r&h, \$125. or best offer. Ext. 387 or AT 6-8544 after 6:00 p.m.

1954 MERCEDES - 300S Cabriolet, a \$14,000 classic, only 210 were made. \$3000. E. Rogers, Ext. 2373 or SH 4-5626 evenings.

1957 PONTIAC - 2 door sedan. Auto trans., r&h, low mileage, very good cond. Set of winter tires incl. Hess, Ext. 2911 or 941-4269 evenings.

1960 FORD RANCH WAGON - V-8 engine, std. shift, r&h, winter tires. Orig. owner left country. Hess, Ext. 2911 or 941-4269 evenings.

1957 OLDSMOBILE - Super 88, 4-door hardtop, white, power steering, brakes. \$500. GR 5-7278 after 6:00 p.m.

1963 CHEVROLET - Belaire, 4-door sedan, stand. 6-cyl. gear shift, seat belts, radio, extras. White with red interior. 5600 miles-new car guarantee still in force. H. McNeill, JU 8-8236 after 7:00 p.m.

1958 CHEVROLET - Bel Aire, two door, V-8 engine, auto. trans., power steering, air cond. r&h, excell. cond. \$650. Ext. 2827 or AT 6-9101.

1959 VOLKSWAGEN - Sedan, Excell. cond., 41,000 miles, r&h. Ext. 798 or HR 3-2703 after 5:30 p.m.

1963 FORD - Falcon, viking blue, bucket seats, 4-speed trans., 101 engine, r&h, ww tires, Coady, Ext. 2474.

1956 PONTIAC - Station Wagon, 4-dr., 6 pass., hydromatic, r&h, ww tires and all sorts of new parts. \$550. R. Kerzner, Ext. 2411.

1961 VOLKSWAGEN - Sedan, r&h. \$1100. R. Kerzner, Ext. 2411.

1937 MG - TA, British racing green. Engine rebuilt in England in 1961. New top, side curtains, interior. Excell. running cond. Coady, Ext. 2474.

1956 PLYMOUTH - Savoy, one year old, re-conditioned engine in excell. order. New clutch, brake linings. Reliable friend for \$275. Avail. October 3. Aitchison, Ext. 2652.

1961 CADILLAC - Convertible, low mileage, excell. cond. AT 6-9260 evenings.

SLOOP - 24 ft. cabin, sleeps 4. Stainless steel galley equipment, provisions for head. 7½ h.p. outboard in well. Built-in gas tank and 30 gal. water tank, two sets of sails, boat in water. Includes 6 ft. dinghy. H. Houtsager, Ext. 2677 or AT 6-0691.

HARDTOP CRUISER - 18 ft. Skee Craft. Two bunks, 35 h.p. Mercury elec. start. motor with alternator, canvass cover, fully equipped, excell. cond. \$1,750. 281-5721 after 5:00 p.m.

RUNABOUT - 16 ft. with 1960 35 h.p. Gale engine. All accessories incl. Good cond.. 281-7595.

RUNABOUT - 15½ ft. Eldorado "Dorset", with 40 h.p. Evinrude w/pushbutton controls, electric starter. Foam rubber seats. Sells for \$2005, asking \$1550. Also, "Sunfish" fibre-glass sailboat. Asking \$450. A. Hanson, Ext. 566 or 325-9514 or 878-0118.

CABIN CRUISER - 17 ft. w/7' beam. 60 h.p. Scott used 12 hours. Navy top, lights, compass, etc. 2 - 6 gal. tanks. \$875. Ext. 322 or EM 3-6292.

CAT BOAT - 19 ft. aux. sleeps two. Head, s/s sink, 14 gal. water tank, 12 h.p. inboard Universal. In water, \$1500. Ext. 468 or 878-2348 after 6:00 p.m.

HOUSE - In Mastic, 2 bedrms., on landscaped 120x100 ft. plot. Very reasonable. M. Gross, Ext. 2172 or 281-8708.

HOUSE - 2 bedrooms, 2 car garage, fireplace, baseboard oil heat. Located in E. Moriches, 1 mile from village. Reynolds, Ext. 2389, 468, or 878-2348 after 5:30 p.m.

ORGANIC HOMESTEAD - 3 bedroom house on 1½ acre, 2 full bathrooms, lg. screened porch, fireplace. Big barn, chicken house, garden, dwarf and semi-dwarf fruit trees, etc. Included also is a dishwasher, washing machine, dryer, alum. storms and screens, \$21,500. EM 3-7032.

HOUSE - Port Jefferson (Harbor Hills). Colonial, 4 bedrms., 6 yrs old. 2½ baths, built-in range, oven, and dishwasher, matching re-frig. Dining-room, heated full cellar, combo storms & screens. Private beach rights, near school. On attractive ½ acre. Good financing avail. \$23,500. Ext. 2449 or HR 3-2281.

HOUSE - Brick cape cod. 4 bedrms., 1½ baths, separate dining room, living room, w/ fireplace, full basement, oil heat, all appliances, alum. storms and screens. 75x210 ft. lot off So. Country Rd., E. Patchogue, \$14,300. Ext. 2491 or AT 6-8517 after 5:45 p.m.

RANCH HOUSE - Medford area, 3 bedrms., 1½ baths, 1½ years old. 100x150 ft. landscaped plot 20 min. from Lab. \$17,500. Ext. 2179 or GR 5-0916 after 5:30 p.m.

HOUSE - Cape Cod, 5 years old. 4 bedrms., 2 baths, full basement. Baseboard oil heat, alum. storms. Located in Miller Place, ½ mile from schools. HR 3-2753.

PHONOGRAPH - Comp. stereo. 4 speed, auto. changer, 2 speakers, \$45. Also, Westinghouse vacuum cleaner, still with guarantee, \$25.; Frigid window fan, \$20.; electric room heater, \$8.; Kenmore washing machine, fully auto., \$60.; kitchen table, \$8.; dresser, \$5.; table fan, \$2.50; Fliedner, Ext. 2894 or 941-9206.

ACCORDIAN - 120 bass, 7 shifts, excell. cond., case included. \$125. AT 6-1057.

**MOTOR SCOOTER** - Cushman. Sells for \$305. Asking \$250. A. Hanson, Ext. 566, or 325-9514 or 878-0118.

**RECORD PLAYER** - 45 rpm RCA table model with auto. changer, plus 60 records. \$25. B. Lundgren, Ext. 782.

**PROPERTY** - Near bay and ocean in Remsenburg. 80x155 ft. - 500 ft. from Westhampton Yacht Basin. Low taxes. Priced for quick sale. Ext. 2179 or GR 5-0916 after 5:30 p.m.

**TREES** - White pine, 2' to 5', cheap. Also, Japanese black pine, spreading yews, hemlock. N.Y.S. certificate. Ext. 597 or AT 6-0436.

**HYBRID RHODODENDRONS** - Roseum Elegans, pink, \$3.50 to \$5.00 depending on size. Also, red azaleas, 10" spread, \$1.00. L. Norman, Ext. 555.

**TABLE LAMP** - Early American. Hob-nail milk glass, maple base, all brass fittings, 3 way light, white eyelet shade, 29" high, like new. Best offer, Ext. 2439.

**RECORD PLAYER** - Miraphon XM110A with base. Includes GE cartridge with diamond needle. Orig. cost \$54.90, will sell for \$25. R. Andreano, Ext. 311.

**ROTISSERIE** - Broiler, "Super Star". Like new, \$15. Paul, Ext. 2146.

**ICE SKATES** - Used one week. Man's size 8, \$8; children's single blade, size 13, \$4.; children's double blade, sizes 13 & 10, \$4. each. Ext. 2873 or Ext. 720 after 5:00 p.m.

**UTILITY TRAILER** - Marine Plywood body (size 4'x7'x18") on steel frame, steel tongue, lights, finders, tarp cover, good rubber. \$75. GR 5-7869 6 to 8 p.m.

**BOW** - Howatt Rocket, 35 lb. at 28", 66" long. Used less than one year. Excell. cond. R. Bowman, Ext. 772.

**ELECTRIC RANGE** - Four burner, 24". with clock and timer and back panel switches. Excell. cond. For sale or exchange for refrigerator. A. Hull, Ext. 595 or HR 3-0242 after 6:00 p.m.

**FURNACE** - Gas fired hot air - 140,000 B.T.U. Also, gas fired water heater - glass lined, 40 gals. Both units only one year old. \$150. C. Spelecki, Ext. 560 or SE 2-4206.

**TRACTOR** - Gravely, with snow plow, rototiller, 30" rotary mower. \$325. 301-45

**WATER PUMP** - New rebuilt 1957 Ford. Never used. \$8. Bob, Ext. 2151.

**PUPS** - English Springer Spaniel. 3 females, 9 wks. old. AKC registered, wormed, temp. shots. Sire champion, dam-obedience trained.

Excell. pets; good field stock. \$60. Ext. 367 or 878-0124.

**CASEMENT WINDOW** - 40x42 Anderson vertical double casement. Inc. alum. screen and storm. Used 6 years and removed when addition was added to house. Orig. price \$85. asking \$20. M. Kurka, Ext. 2273.

**VENETIAN BLINDS** - With valances and fixtures metal, eggshell color. 2 ea. 8'3" wide, 2 ea. 7'7" wide, 2 ea. 6'3" wide, and 1 6'5". all 54" long, \$3. each. Will sell in lot or separately. Ext. 2737 or HR 3-1154.

**BABY CARRIAGE** - Grey "Storkline". Good cond. \$18. Ben, Ext. 577 or GR 5-2873 after 6:00 p.m.

**COCKER SPANIEL** - One male, AKC registered, used to kennel not housebroken. Best with adults; free. Ben, Ext. 577 or GR 5-2873 after 6:00 p.m.

**ACCORDIAN** - Del Mar, red, with 120 cords, and 3 shifts. Music books and stand incl. \$130. Ext. 695.

**MOTOR SCOOTER** - 1963 Allstate Cruisair deluxe. Used 3 mos. Bargain at \$295. 751-0835 or Ext. 354.

**OUTBOARD MOTOR** - 1962 Johnson 5½ h.p. used once. \$150. firm. Also, Rototiller, used three seasons. Excell. cond. \$100. firm. J. Ferrer, 878-0792 after 6:00 p.m.

**PUMP** - Deep well jet Aurora ½ h.p. One year old, excell. cond. \$35. C. Goodzeit, Ext. 2682 or AT 6-0271.

**REFRIGERATOR** - GE (closed wheel on top). Excell. working cond. Porcelain inside, about 10 cu. ft. \$30. Also, Norge wringer-type washing machine, good working cond. \$10. Call 878-9528.

#### WANTED

**CAR** - 1932 to 1938 Chevrolet or Ford coupe. Reasonable. Ann, Ext. 2367.

**RIFLE** - Winchester model 94. W. Chornoma. 2382 or 325-0567.

**PUP** - Male German or Belgium Sheppard, 3-6 mos. old, full bred, gratis, or minimum cost. Good family home. J. Rose, Ext. 2800.

**LETTER OPENER** - Plastic, that was borrowed from the Medical Library last week in August. Please return. It has very little monetary value, but great sentimental value.

**BABYSITTING JOBS** - Mother of 3 small children is prepared to give day-time care in her home to an infant or to one or two small children of working mother. GR 5-7447.

**GIRL'S BIKE** - 20 or 24" in good shape. Also, sturdy car-bed baby coach. Ext. 402 or AT 6-1091.

**HOMES** - For two kittens, 12 weeks old and ready to go. AT 6-0517.

**PIANO** - Would like to rent or buy used piano. Thompson, HR 3-1920.

**TELEVISION SET** - Used, \$25.00. Ext. 2629.

#### FOR RENT

**STUDIO ROOM** - With private bath. Kitchen privileges and breakfast incl. 281-5068.

**APARTMENT** - Furnished, located in Bellport Village. 2 large rooms, pullman kitchen and bath. Private entrance; all utilities & garage incl. in rent of \$120. per mo. E. Webster, Ext. 684 or AT 6-8850 evenings.

**HOUSE** - Furnished. Beaver Dam Road, Brookhaven. 2 or 3 bedrms., Avail. October 1, 1963 to June 15, 1964. Ext. 381

**ROOM** - Use of kitchen and washer and dryer incl. AT 6-0735 or GR 5-3263.

#### LOST AND FOUND

**KEY** - Found in Recreation Building.

**JACKET** - White silk, Rensselaer. Found in Recreation Building.

**HAT** - Man's brown, size 6½. Found in Recreation Building.

**CAP** - Baby's white. Found in Recreation Building.

**TIE** - Brown wool, found in Recreation Building.

**SWEATER** - Pale green wool. Lost in Physics Building or Cafeteria. G. Goldhaber, Ext. 2277.

#### PERSONNEL SERVICES

3 Center Street

#### CARPOLS

**DRIVERS** - To form or join carpool from Greentree-Smithtown Acres area in Smithtown. Ext. 563.

**RIDE** - Paying rider from Fairview Avenue, Bayport, would like to join carpool. K. Brennan, 613 or HR 2-0436.

**SCHOOL POOL** - To Manhattan. Leave Lab. 3:00 p.m. Tuesdays and Thursdays; return that night. Riders or drivers call J. Altson, Ext. 2733.

**RIDE** - Paying rider needs ride from vicinity Ocean Avenue, C. Moriches. Bill, 878-0951.