

the Bulletin Board

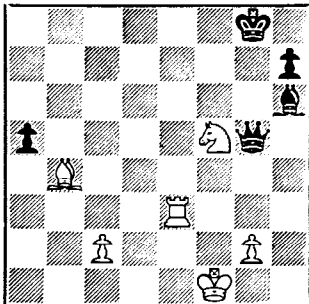
VOLUME 17, NUMBER 8

Published by the BNL Personnel Office

NOVEMBER 12, 1963

CHESS PROBLEM

This week's problem contains a psychological twist. Black has a Queen for a Rook plus a passed Pawn. But it is White's move and win. How? Answer elsewhere in this week's BULLETIN BOARD.



CAFETERIA SPECIAL COMPLETE THANKSGIVING DINNER THURSDAY, NOVEMBER 14

Apple Cider
Roast Tom Turkey with Sage Dressing
Cranberry Sauce
Whipped Potatoes
Green Peas
Tossed Green Salad
Pumpkin or Mince Pie
Beverage
Nuts & Mints
\$.99

ART EXHIBIT CONTINUES UNTIL NOVEMBER 15

The fifth annual BERA Art Exhibit will remain open weekdays from 11:00 a.m. until 5:00 p.m. through Friday, November 15. It will also be open on Thursday evening, November 14, from 8:00 to 10:00 p.m.

THEATER GROUP NOTICE

Come out and join the Theater Group for an interesting meeting in the Recreation Hall on Thursday, November 21, at 8:30 p.m. The winter production will be announced. The program for the evening will be "Two for the Seesaw", and refreshments will be served.

BRIDGE CLUB

There will be a full master point bridge game on Thursday, November 14, at 8:00 p.m. in the Recreation Hall. Everyone is invited.

THIRTY FIRST BROOKHAVEN LECTURE

by JACK CHERNICK
Nuclear Engineering Department

Title:

"The Nuclear Reactor Comes of Age"

Lecture Hall, 8:00 p.m., Wed., Nov. 13

The talk will trace the growth in peacetime uses of the nuclear reactor from Fermi's achievement of a chain reaction to the present date.

A buffet supper (\$2.75) will be served at the Brookhaven Center before the lecture, beginning at 6:00 p.m. Reservations should be made at least one day in advance by calling Ext. 2302 before 5:00 p.m. or Ext. 2453 in the evenings.

Refreshments will be available in the Exhibit Hall lobby following the lecture.

RECREATION OFFICE

The Recreation Office will be closed on Thursday, November 14. This will not affect the gymnasium or pool schedules.

CAFETERIA COMMITTEE

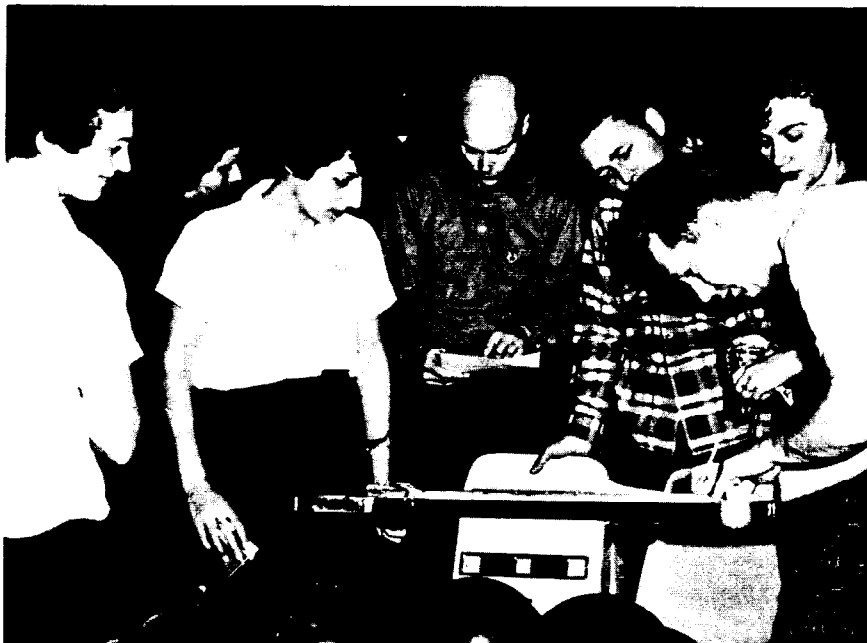
The Cafeteria Committee, organized to help maintain the high standards of the Cafeteria, invites you to contact the following members in person, by phone or by note, with any suggestions, criticisms, or comments. They will answer all communications, indicating what action can or cannot be taken.

GAR HARBOTTLE, Chemistry.....Ext. 2267
ED HUNTER, Plant Maintenance.....Ext. 2795
J. WASHBURNE, Chairman Personnel..Ext. 395

SCIENTIFIC INSTRUMENTS EXHIBIT

An exhibit of scientific and laboratory instruments will be held by the Fisher Scientific Company on Tuesday, November 19, between 10:00 a.m. and 4:00 p.m., in the Exhibit Hall, 26 Brookhaven Avenue. A new type of electron microscope will be among the devices shown. Coffee will be served and all Laboratory employees are welcome.

MIXED DOUBLES TOURNAMENT



SATURDAY, NOVEMBER 16 — 3:00 P.M. — PORT JEFF BOWL

Forty-seven teams will be competing in the annual Mixed Doubles Tournament on Saturday, with bowling balls, shoes, bags, trophies, etc., going to the top teams.

Don't be late. Register at the desk when you arrive. The tourney begins at 3:00 p.m. sharp. Please come early!

NOTE: There will be no practice bowling on the tournament lanes after 2:30 p.m.

DINNER FOR TWO!!

The BERA Board announces a contest for the design of an official Brookhaven Employees' Recreation Association seal. In addition to the normal uses of a seal, it is expected that ours will be available as an arm patch or insignia for some of BERA's member clubs. The rules are simple, so don't hesitate to give it a try:

1. Contest open to any qualified member of BERA.
2. Art work does not have to be reproducible (finished), so that any medium can be used. (It's the idea that we're after.)
3. Do not sign your work. Sign your name on a separate piece of paper, enclose it in a sealed envelop and affix to the back of your entry.
4. Seal must include Brookhaven National Laboratory and Brookhaven Employees' Recreation Association or Employees' Recreation Association. Initials can be used in either or both instances.
5. The BERA Board will act as the panel of judges and all decisions will be final.
6. Entries must be submitted by noon, Wednesday, November 27, 1963, to the Recreation Office.

**The Grand Prize For The Winner Will Be A Dinner For Two (\$25)
At A Restaurant Of Your Choice.**

The winning seal will be announced and published in the BULLETIN BOARD of December 11, 1963.

TENTATIVE METROPOLITAN OPERA SCHEDULE JANUARY - APRIL

JANUARY			
1	Ariadne	3 Rigoletto	
2	Sonnambula	4 Trovatore	
3	Magic Flute	5 Lohengrin	
4	Faust (Mat)	6 Lucia	
	Rigoletto (Eve)	7 Aida	
6	Traviata	8 Last Savage (Mat)	
7	Boheme	10 Traviata	
8	Lucia	11 Lohengrin	
9	Faust	12 Otello	
10	Ariadne	13 Aida	
11	Sonnambula (Mat)	14 Last Savage	
	Don Carlo (Eve)	15 Otello (Mat)	
13	Aida	Onegin (Eve)	
14	Lucia	17 Lohengrin	
15	Fledermaus	18 Otello	
16	Magic Flute	19 Onegin	
17	Traviata	20 Ariadne	
18	Trovatore (Mat)	21 Trovatore	
	Ariadne (Eve)	22 Rigoletto (Mat)	
20	Fledermaus	Last Savage (Eve)	
21	Traviata	24 Trovatore	
22	Aida	25 Otello	
23	Last Savage	26 Last Savage	
24	Sonnambula	27 Lohengrin	
25	Magic Flute (Mat)	28 Otello	
	Trovatore (Eve)	29 Onegin (Mat)	
26	Aida	Boheme (Eve)	
27	Lucia	MARCH	
28	Last Savage	2	Last Savage
29	Aida	3	Ariadne
30	Boheme	4	Lohengrin
31	Faust	5	Onegin
		7	Don Carlo (Mat)
			Lucia (Eve)
		9	Otello
FEBRUARY			
1	Lohengrin (Mat)	10	Lohengrin
		11	Cavalleria Rusticana & I Pagliacci
		12	Falstaff
		13	Onegin
		14	Boheme (Mat)
			Lohengrin (Eve)
		16	Falstaff
		17	Faust
		18	Otello
		19	Macbeth
		20	Cav - Pag
		21	Falstaff (Mat)
			Otello (Eve)
		22	Tosca
		23	Macbeth
		24	Onegin
		25	Falstaff
		26	Tosca
		27	Requiem
		28	Requiem (Mat)
			Cav - Pag (Eve)
		30	Tosca
		31	Onegin
		APRIL	
		1	Macbeth
		2	Cav - Pag
		3	Falstaff
		4	Macbeth (Mat)
			Otello (Eve)
		6	Onegin
		7	Falstaff
		8	Tosca
		9	Otello
		10	Boheme
		11	Cav - Pag (Mat)
			Macbeth (Eve)

MIXED DOUBLES BOWLING TOURNAMENT SATURDAY, NOVEMBER 16

PERSONNEL SERVICES

Recreation Office - 3 Center Street
9:00 a.m. - 1:00 p.m.

RENTAL LIBRARY

A new selection of books has arrived for your reading pleasure. Among them are:

Ararat	—WILCHEK
Angelique in Barbary	—S. GALON
The American Way of Death	—J. MITFORD
The Battle of the Villa Fiorita	—R. GADDEN
Caravans	—J. MICHENER
The Cape Cod Lighter	—J. O'HARA
Careful He Might Hear You	—S.L. ELLIOTT
The Foragers	—B. HAAS
A Free Agent	—F. WAKEMAN
Is There a Life After Birth	—A. KING
I Take This Land	—R. POWELL
The Moon-Spinners	—M. STEWART
Nine Hours to Rama	—S. WOLPERT
Pretty Leslie	—R.V. CASSILL
The Quality of Mercy	—M.C. BANNING
The Raider	—J. JENNINGS
Sow Not in Anger	—J. HOFFENBERG
Six-Eleven	—A. MORGAN
Voyage In - Voyage Out	—J. RIKHOFF
The Venetian Affair	H. MAC INNES
Welcome to Thebes	—G. SWARTHOUT
We Have Always Lived in The Castle	—S. JACKSON

TICKET SERVICE

Discount coupons are now available for "Stop The World I Want To Get Off", playing at the Ambassador Theater in New York City.

Arrivals and Departures

WELCOME TO BNL

BIOLOGY	
Helen M. Kalbach	Ext. 369
INSTRUMENTATION & HEALTH PHYSICS	
Donald E. McClure	2255
NUCLEAR ENGINEERING	
Alyce M. Daly	453
Dean Lee	
Salvatore H. Libertini	2209

RECENT DEPARTURES

ARCHITECTURAL PLANNING	
Richard Eaton	
INFORMATION DIVISION	
June Karle	
MEDICAL	
Carol L. Pfeleiderer	

FOLK DANCING

Don't miss out! There is folk dancing every Monday evening from 8:00 p.m. to 11:00 p.m. at the Recreation Building in the Apartment Area.

CAMERA CLUB SLIDE LECTURE

An illustrated slide lecture will be held by the Camera Club on Thursday, November 14 at 8:00 p.m. in the Recreation Building. The characteristics of the four Kodak color films will be demonstrated through 150 original color slides of excellent quality. All color slide fans can both enjoy and profit from this showing.

BOWLING NEWS FLASH!

Last week at the Centereach Lanes, the Goofballs, a team consisting of experienced and inexperienced bowlers defeated the Maltese Falcons, a team which tried hard but didn't quite make it.

The winning team, captained by H. Biesel with strong support from "Killer" Nelson, "Ringer" Mars, "One Pin" Worthington, "Strike" Patanjo, and "Slugger" Waldbauer, and the Maltese Falcons, captained by "Banana" Zahra with "1/2" DeRosa, "Stuck Fingers" Kapner, "Towel" Leverock, "Sore Arm" Gardner and "Horse" Hamlyn reside at T89 - BNL's Receiving.

A good time was had by all with pizza supplied by the losers.

LEAGUES BEGIN NOVEMBER 19

Teams entered in our BNL competition this year include:

VOLLEYBALL

Team - Captain	Ext.
1. Cosmotron, G. LEVINE.....	600
2. Bubble Techs, T. ERICKSON.....	686
3. Chemistry, Y. CHU.....	2541
4. Medical, R. FAIRCHILD.....	2889
5. Physics, L. TRUEMAN.....	2681
6. Physics, K. FOLEY.....	2646
7. Blue Jays, G. OLDHAM.....	639

BASKETBALL

1. Biology, G. LATHAM.....	373
2. Blue Jays, H. HALLER.....	639
3. Physics, A. PRODELL.....	2410
4. Chamber Chaps, T. ERIKSON.....	686
5. Runners-up, D. EASLER.....	2314
6. Nuclear Engineering, R. SMOL.....	572
7. Old Timers, J. Pontieri.....	2387
8. Applied Math, S. KAPLAN.....	2448
9. Health Physics, M. FLOM.....	2741

Both leagues are scheduled to begin their seasons in our Gymnasium beginning Tuesday, November 19.

SKI CLUB

The next meeting of the BNL Ski Club will be held on November 26 at 8:00 p.m. in the Recreation Hall. At the last meeting, a bus trip was planned for January 11 and 12. We are now trying to get club rates at local slopes for pre-trip instruction.

TELEPHONE CREDIT CARDS

To avoid the nuisance to you and to the Laboratory of those minor BNL telephone bills (as well as the 10¢ per call service charge), you are urged to take advantage of the convenience of a telephone company credit card for personal toll calls made from the Laboratory. A credit card may be readily obtained by calling the business office of your home telephone exchange.

UPTON RIFLE AND PISTOL CLUB

Weather permitting, next Sunday, November 17, will be the last day of the fall large bore tournament. The three top shooters this season are Roy Domish, Al Lukas and George Barton.

A similar rifle tournament is planned for the spring of 1964.

BNL VISITORS

Members of the American Geological Society, who will be meeting in New York, will tour the Laboratory on November 21.

**CLASSIFIED ADS
FOR SALE**

1964 VOLKSWAGEN - Blue sedan, heater; driven only 4600 miles in Europe. G. Will, Ext. 2607.

1955 BUICK - Hardtop, std. trans., excell. cond. \$230. Owner leaving country. Schielerup, Ext. 467.

1963 DODGE - Dart, r&h, ww tires, std. trans. 2-dr., black, red interior. 9000 miles. \$1600. LT 9-4247 after 4 p.m.

1956 OLDSMOBILE - 2-tone green. Power steering and brakes, r&h, needs motor tune-up and a few body patches. \$200. Ext. 2473.

1959 HILLMAN - Minx, 4-dr. sed. Good cond. Ext. 2853 or AT 6-0798.

1953 CHEVROLET - 6 cyl., good cond. \$100. AT 6-8712 after 6 p.m.

1947 PICKUP TRUCK - Fair cond. \$93.98. AT 6-8712 after 6 p.m.

1953 PLYMOUTH - Blue & white, tinted glass, r&h, good rubber, sound engine, everything works. Passed June inspection. \$85. Can be seen anytime. B. Diehn, Ext. 732 or 2782.

1957 DODGE - Coronet, auto. trans., excell. cond.; owner left country. \$495 or best offer. A. Kigoshi, Ext. 2803, 784, or 718 after 6 p.m.

1961 NSU SPORT PRINZ - Bertone fast-back coupe body; 4 speed floor shift, 17,000 mi. 35 mpg. Perf. cond. \$800. A. Enright, JU 8-7145.

1957 FORD - 9 pass. sta. wagon. Auto trans. pwr. steering, r&h, orig. owner, T-Bird eng. Excell cond. Ext. 423.

1960 CADILLAC - Conv., white w/red int. All power, w w tires, excell. cond. \$2500. Doug, Ext. 2931 or AT 6-1127 anytime.

1954 MERCEDES - Cabriolet. Only 210 made. A rare \$14,000 classic for only \$2500. SH 4-5626 evenings.

SOLUTION TO CHESS PROBLEM

- 1. R-KN3
- 2. Nx8 Check

This of course is a surprise move. You could try: 2. NxQ and after PxB struggle to find a way to win with the drawn Pawn ending.

2. K - R1
3. B - Q6!! This threatens the Black Queen. If she captures the B she goes lost to the Knight by the check on B7. And of course if she keeps an eye on the Bishop for the mate on K5, she is lost just the same if she captures the B on K5. Of course, Black could have played: 2. K-N2 but would have lost its Queen by White's

3. N-B5 Check.

COOKING EXCHANGE GROUP

The next meeting of the Cooking Exchange Group will be on Wednesday, November 20, at 3:00 p.m. in the Recreation Building. Baby sitting will be provided for a fee of 50¢ per mother. All those who are interested are welcome.

1956 BUICK - Hard top, 4 new tires. Good cond. \$300. T Schreiner, Ext. 2208.

LOVE SEAT - Recently reupholstered. McKenna, Ext. 2474 or WA 9-6047.

TRAIN SET - Complete Lionel O-gauge set mounted on 4x8 ft. board, elevated trestle crossover plus switches, transformer, engines, cars and much scenery. Inspect it and make an offer. No reasonable offer refused. Stang, Ext. 379 or LT 9-3269.

BED - Maple double bed and spring. Colonial style. \$15. Mary, Ext. 603.

BABY CARRIAGE - Folding type that converts to car bed. Navy blue, \$5. Also, electric juice squeezer, Sunkist, in excell. cond., \$5. Lorraine, Ext. 2885.

WASHING MACHINE - Kenmore, fully auto., excell. cond. Top loading, recent model. \$110. Flannery, Ext. 2314.

ENCYCLOPAEDIA - Britannica, 1958 edition plus yearbooks covering 1959-1961. Excell. cond., best offer over \$100. Trigg, Ext. 2341.

HARMONICA - 4 octave Hohner, \$10. TV - 8 in. Delmonico, \$75. or offer. Amp., 12 watt and 2 speakers, \$25. Guitar, classical. Hard top for MGA. L. Barlow, Ext. 2871.

STORM WINDOWS - Three new 55x31 in. windows, primed white. \$15. Ext. 2853 or AT 6-0798.

VACUUM CLEANER - Electrolux with attachments. 11 mos. old, orig. price \$149., selling price, \$100. Neal, Ext. 670.

AMPLIFIER - Heathkit, model W-4B. Pre-amp Heathkit model WA-P2. Asking \$35. for both. Gil, Ext. 2801.

SOFA - Three piece turquoise sectional, modern, with foam cushions, plus brand new red and white slip covers, plus set of plastic covers. All for \$300. Firm! LT 9-1614.

WARDROBE CABINET - Large fiberglass w/ walnut finish, 66x48x21 in. with top and side shelves. \$12. Also, baby car bed, \$2.50. B. Diehn, Ext. 732 or 2782.

BOWLING BALL - Ebonite, 16 lb. with bag. \$10. C. Smol, Ext. 2152.

DINING ROOM SET - Walnut table and six upholstered chairs, oval, French Provincial, comp. with 2 leaves and pads. Seats 4-10 with no problem. \$100. LT 9-1614.

FURNACE - Lennox gas hot-air furnace, 80,000 btu output, \$130. 30-gal. gas-fired hot water heater, \$25. A. Meade, Ext. 2634 or FO 8-4159 after 6 p.m.

RADIO - Portable, 6 transistor pocket size w/ earphone. Brand new. \$10. Also, drawing set, Keuffel and Esser Mercury. Excell. cond. \$12. Ext. 2709.

CAMERA - 35mm Yashica Rapide. F:2.8 with case. \$25. M. Koson, Ext. 323.

BOILER AND GUN - Oil fired, for hot water heat system, some electrical controls, good cond., 5 years old. \$50. D. Gilzinger, Ext. 2430 or JU 8-4707.

AMPLIFIER - Stereophonic Eico model AF-4. 4 watts per channel or 8 watts mono. \$25. G. Schluntz, Ext. 2314.

TRAINS - American Flyer. Diesel engine, 10 freight cars, two pair switches, track, trans-

former. \$25. Pacific engine passenger cars, track, two pair switches, talking station and transformer. \$25. Ext. 2330.

GO CART - New engine, slicks for racing, framed for dual engine mounts, low power, \$75. Ext. 2330.

HALLICRAFTERS RECEIVER - SX101 mark 111A. 80-40-20-15-10 meter bands. Add. dial calibrated use with either 2 or 6 meter converter. AM-CW-SSB, 100KC calibrator, very good cond. C. Porter, Ext. 2373.

WANTED

RECORD PLAYER - Call Micke, Ext. 2777.

BABYSITTING JOBS - Evenings and weekends. Mary, Ext. 384.

PISTON AIR PUMP - For aquarium. Ext. 664.

BIKE - Lady's; electric iron and other utensils; table or desk about 2½ ft. high. Citron, Ext. 714.

CAMERA - Press type: Linhoff, Graphic, Graflex, etc. S. Gordon, Ext. 2737.

TYPEWRITER - Used standard manual in good cond. Bob, Ext. 426.

ANDIRONS - and other fireplace tools; chest of drawers; early American dining chairs-6; 3-drawer file cabinet; desk Ext. 301-40 or SH 4-5969.

TRAILER - For 16 ft. boat. Ext. 2812.

HOUSE - To rent with 2-3 bedrms., for occupancy January or February 1964. Prefer unfurnished. Should be within 25 miles of the Laboratory. Auerbach, Ext. 753, or GR 5-3738 evenings.

POOL TABLE - Regulation size. Ext. 2866.

CARPOOLS

DRIVERS - Wanted to join existing carpool from South Country Rd., E. Patchogue vicinity. Frank, Ext. 2684.

DRIVER - Wanted to complete existing carpool from Valley Stream area. J. Rose, Ext. 2800.

DRIVER - Would like to join carpool from Pt. Jefferson, vicinity of Catholic Church. 8:30 to 5:00 shift. R. Skelton, Ext. 2950.

DRIVER - Wants to form or join carpool in Pt. Jefferson Station area. B. Hopkins, Ext. 2962.

FOR RENT

APARTMENT - Cozy, three room furnished apartment, located in Mastic Beach. Reasonable, utilities included; separate entrance. 281-8757 after 6 p.m.

LOST

PEN - Parker 61, stainless-steel barrel and cap, vicinity of 60-in. cyclotron, on Nov. 1. J. Mollenauer, Ext. 2292.