

the Bulletin Board

VOLUME 17, NUMBER 9

Published by the BNL Personnel Office

NOVEMBER 19, 1963

THANKSGIVING HOLIDAYS

Thursday, November 28, and Friday, November 29, will be observed as regular Laboratory holidays.

WEEKLY PAY CHECKS — Employees who are paid on a weekly basis will receive their checks on Wednesday, November 27. The checks will be available at the same places and the same hours as on Fridays. Weekly employees who will not be able to pick up their checks on Wednesday may have the checks mailed to them by leaving their name, address and life number with the Fiscal Division Cashier not later than Monday, November 25.

TIME CARDS — Due to the short work week, supervisors should deliver all weekly time cards to Payroll by 9:30 a.m. on Monday, November 25.

MONTHLY PERSONNEL — Employees on the monthly payroll will receive their checks on Wednesday, November 27. Since the reporting period extends to November 25, the monthly payroll will be anticipated. No requests for advance checks can be honored after Wednesday, November 20. Unless such a request has been made, no monthly checks can be distributed before Wednesday, November 27. Vacation balances reflected on the November monthly check stubs will include the vacation accrual for the month of November but not the usage. All usages for November will be incorporated with December usages. Vacation balances will be adjusted accordingly, in December.

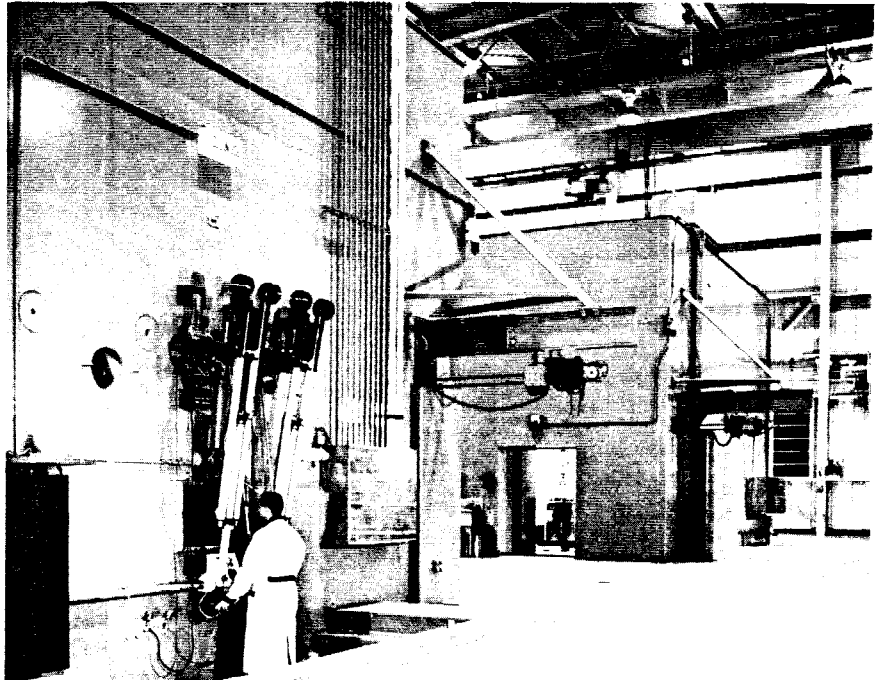
LEAVE CARDS - Monthly leave cards should be delivered to Payroll by noon on Monday, November 25.

ON-SITE BANK HOURS — The People's National Bank on site will be open during the usual hours on Friday, November 29.

LIGHTHOUSE FOR THE BLIND ORDERS ARRIVE THIS WEEK

Items ordered at the Lighthouse for the Blind Exhibit may be picked up at the Recreation Office, 3 Center Street, beginning Friday, November 22, between the hours of 9:00 a.m. and 1:00 p.m. Exact payment (in special envelopes that are being distributed by mail today) should be made at the time the items are picked up. Everyone is urged to call for the articles on Friday, or as soon thereafter as possible.

HIRDL TO BE DEDICATED ON NOVEMBER 22



Interior view of the High Intensity Radiation Development Laboratory (HIRDL).

The High Intensity Radiation Development Laboratory (HIRDL), a facility designed to advance the Atomic Energy Commission's program for process radiation development, will be dedicated next Friday, November 22.

The dedicatory address will be delivered by Dr. Gerald F. Tape, a member of the AEC. Dr. Tape was a senior member of the BNL staff from 1951 to 1962; as Deputy Director and then Acting Director of the Laboratory, he took an active interest in the development of this important new research facility. The HIRDL is designed to: 1) obtain engineering data on a variety of radiation sources in the million-curie range; 2) develop more efficient techniques for handling large-scale radiation sources; and 3) train scientists and engineers in the uses of such radiation sources for research purposes, and ultimately for industrial applications. This information is essential for the design and future irradiation facilities which would be useful in a wide variety of applications of radiation energy. Those currently under development include the production of plastics and chemicals, cold sterilization of drugs and medical supplies, and the preservation of perishable foods.

The total level of radiation to be employed in the laboratory is approximately two million curies. Most of the sources are of cobalt-60 and cesium-137. Spent reactor fuel elements will also be used as sources of radiation.

The main design features of the HIRDL are two unique cells, developed by engineers and scientists of BNL's Nuclear Engineering Department. One is an irradiation cell for experimental work with radiation sources. The other is a work preparation cell where various types of sources will be prepared for experimental use. A shielded area is provided for radiation sources not being used.

The cost of the HIRDL, including equipment, is \$1,850,000. The total area of the building is approximately 15,000 square feet. Ground was broken for the laboratory on November 28, 1960.

HIRDL is part of the AEC's Radiation Development Center, which will not only serve Brookhaven's various research programs, but will also be available on a limited basis to visiting scientists interested in the various applications of radiation technology.

BERA FILM SERIES Shoot The Piano Player



Thursday, Nov. 21, Lecture Hall, 8:30 p.m.

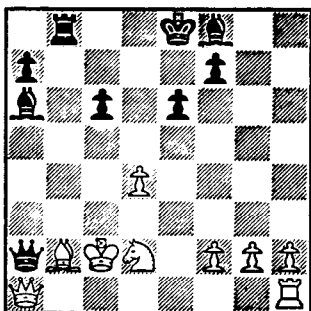
"Shoot the Piano Player" is Francois Truffaut's second film, following "The 400 Blows" and preceding "Jules and Jim." In spite of the complaint of some American critics who could not find in it a sufficient "moral," it is a brilliant film, perhaps erratic and unpredictable at times, but always refreshing and provocative. It is based on an American crime novel (Truffaut was a devotee) and, in a sense, is a "gangster" picture. It is, at the same time, a sparkling comedy and an overall compassionate statement of inescapable tragedy.

"Among the best examples of the new French picture making...Truffaut has brought his natural technical fluency to a point of true meeting with his peculiar combination of compassion and lyrical comic sense..." "Beat th Devil" may come to mind while watching "Piano Player," but in spite of his sly humor, Truffaut has not satirized his characters out of their personal reality."

Herald Tribune

CHESS PROBLEM

In this week's problem, it is Black's move and win. White is not on the verge of queening, but could his rook pawn be stopped after the queens are exchanged? Or could you avoid losing your queen's bishop after that exchange? Solution elsewhere in the BULLETIN BOARD



Arrivals and Departures

WELCOME TO BNL

AGS		
Martin Dain		Ext. 2563
William E. Davidsen		636
Stanley Gussow		2416
CENTRAL SHOPS		
Alfred M. Bjork		567
Stephen L. Hoskie		577
COSMOTRON		
Richard J. Marrin		2511
FISCAL		
Joan S. Bennett		2390
MEDICAL		
Edward J. McFadden		2912
NUCLEAR ENGINEERIG		
Suzanne Ogden		453
PHOTOGRAPHY AND GRAPHIC ARTS		
Edmund F. Henckel		2461
PHYSICS		
Carol Balling		694

RECENT DEPARTURES

MEDICAL	
Ralph W. Boardman	
NUCLEAR ENGINEERING	
Victoria May	
PERSONNEL OFFICE	
Laura M. Avent	
PHYSICS	
Mary Kammer	

PERSONNEL SERVICES

Recreation Office — 3 Center St.
9:00 a.m. - 1:00 p.m. Daily

PAPERBACKS AT A DISCOUNT

Arrangements have been made for BNL employees to purchase Dover, Rider, Cambridge University and Academic paperback books at a 20% discount. The lists of the four publishers total nearly 2,000 titles, the majority of which are in the fields of science and technology. There is, however, an excellent selection of books in the arts, recreation and literature.

An additional service offering hard cover text and trade editions at a 10% discount is also available.

FOR SALE

Royal Canadian Air Force Exercise Plan books, Adult Physical Fitness Pamphlets, batteries, film, film processing service, athletic socks, tennis balls, badminton birds, etc.

BNL VISITORS

Last Saturday, November 16, a group from the A.F.L.-C.I.O. convention in New York City toured the Laboratory.

Members of the American Nuclear Society will tour the Laboratory on November 22 in connection with the dedication of HIRDL.

CAFETERIA SPECIAL

Thursday, November 21

Small Juice
Celery & Olives
Chicken Cacciatore over Rice
Tossed Salad
Shortcake
Beverage
Nuts & Mints
\$.99

MIXED DOUBLES

BOWLING TOURNAMENT

RESULTS

First Place: C. Lento & H. Weinman
Second Place: T. Walsh & E. Walsh
Third Place: V. Svoboda & J. Svoboda
Fourth Place: N. McGovern & G. McGovern
High Gross Game (female):

M. Stelmachuk

High Gross Game (male): D. Easler
You-Know-What Award: C. Baker & L. Baker

OUTING CLUB

There will be a meeting of the Outing Club on Wednesday evening, November 20, at 8:00 p.m. in the Recreation Hall. James Powell will give a slide-illustrated talk on "Climbing in the Canadian Rockies." Trips to the Adirondacks and White Mountains will be discussed. Call Ext. 789 for details.

SAX, GUITAR, BASS AND DRUMS

The Theatre Group is looking for a Jazz Quartet, as defined above, to be part of a production of James Thurber's "A Thurber Carnival." The play is fun and so is the music.

Anyone interested in being part of this combo, please telephone the play's director, Tony Nappi, at Extension 2374.

DON'T PUT WATER IN LAB VEHICLES

All Laboratory vehicles have been winterized with a permanent type anti-freeze. When on site, do not add water. Bring the car to the BNL Motor Repair Shop (Bldg. 423) if additional coolant is needed. If necessary to add water when off site, please notify the Motor Repair Shop upon return.

FOLK DANCING

Don't miss out! There is folk dancing every Monday evening from 8:00 p.m. to 11:00 p.m. at the Recreation Building in the Apartment Area.

DINNER FOR TWO!!

The BERA Board announces a contest for the design of an official Brookhaven Employees' Recreation Association seal. In addition to the normal uses of a seal, it is expected that ours will be available as an arm patch or insignia for some of BERA's member clubs. The rules are simple, so don't hesitate to give it a try:

1. Contest open to any qualified member of BERA.
2. Art work does not have to be reproducible (finished), so that any medium can be used. (It's the idea that we're after.)
3. Do not sign your work. Sign your name on a separate piece of paper, enclose it in a sealed envelop and affix to the back of your entry.
4. Seal must include Brookhaven National Laboratory and Brookhaven Employees' Recreation Association or Employees' Recreation Association. Initials can be used in either or both instances.
5. The BERA Board will act as the panel of judges and all decisions will be final.
6. Entries must be submitted by noon, Wednesday, November 27, 1963, to the Recreation Office.

**The Grand Prize For The Winner Will Be A Dinner For Two (\$25)
At A Restaurant Of Your Choice.**

The winning seal will be announced and published in the BULLETIN BOARD of December 11, 1963.

CLASSIFIED ADS

FOR SALE

1959 ENGLISH FORD - Consul, 4-dr. sedan. Owner left country. C. Raseman, Ext. 348 or 941-4078 after 6 p.m.

1963 PONTIAC - Catalina, 2-dr. hard top. 3 carbs, 4-sd. trans., positraction, deluxe interior. Special tires & suspension. Radio and extras. Immac., must sell, will sacrifice for \$2500. G. Johnson, Ext. 652 or SH 4-2376.

1959 OPEL - Record sedan. Product of GM Germany. Excell. mechanically, clean in and out. Economical to operate and maintain. Very reasonable. Ext. 2811.

1954 FORD - Station Wagon, std./overdrive. Excell. tires, r&h, good local trans. \$75. Ext. 2674 or GR 5-3792 after 6 p.m.

1953 PLYMOUTH - 6 cyl. stand. shift. Good body and engine. \$85. B. Diehn, Ext. 732 or 2782.

1954 CHEVROLET - Station Wagon, good running cond., \$175. YA 4-3132 or Ext. 2464.

1955 BUICK - Hardtop, stand. trans., excell. cond. \$230. Owner leaving country. Schielerup, Ext. 467.

1957 VOLKSWAGON - Needs valve and tune-up job. Ext. 2579 or 2637.

1956 BUICK - Hardtop, 4 new tires, good cond., \$300. T. Schreiner, Ext. 2208.

1962 PONTIAC - Tempest LeMans, excell. cond., very low mileage. Ext. 2665 or SH 4-5210 after 5:30.

1951 PONTIAC - Clean, original owner. All tires nearly new (2 are snow tires) \$75.00. M. Dobert, Ext. 322.

1962 AUSTIN HEALEY SPRITE - Mk II. Red, wire wheels plus many options. P. Fallon, Ext. 2718 or SE 2-6746.

1960 VALIANT - Handy man's dream. A challenge to the artisan. A miserable excuse for transportation will entertain blind prospective buyers at any noisy intersection. J. Broich, Ext. 2324.

1964 VOLKSWAGEN - Blue sedan, heater, leatherette seats, driven only 4600 miles in Europe. G. Will, Ext. 2607.

1958 MERCURY - Hard top. Two door, white & yellow. R & H. Auto Trans. New Brake job. Good cond. One owner. \$550. Ann, Ext. 2367 or YA 4-3035 after 6:00 p.m.

1957 FORD FAIRLANE - 500. Four dr. with a 1961 engine 390-V8, original 22,000 miles. New tires, power brakes, std. shift. Good cond. \$475. Ext. 604 or 281-7595.

1960 MG ROADSTER - White w/black interior. W/w, white walls, tonneau cover, seat belts, r&h. 27,000 orig miles. A real clean car. \$1375. R. Meyer, Ext. 481 or LT 9-5757.

1956 PLYMOUTH - V8, auto trans., hardtop. 4 new tires. \$125. Lipton, Ext. 782.

1961 COMET - Two door station wagon. Black w/red interior. R&h, snow tires, fair cond. Ext. 2610.

ROCKER - Boston type, painted aqua. \$7. Snowsuit, child's blue, size 4. \$4. AT 6-0958.

MATTRESS - Twin inner spring & base. \$10. a pair. Excell. cond. Ahlers, Ext. 440 or JA 2-3227.

BICYCLE - Boy's, black and chrome. Basket, headlight and new tires, good cond. \$10. J. Smolski, Ext. 782.

TABLE LAMP - Early American, 30 in. tall. Hobnail milk-glass, brass and hardrock maple. White eyelet shade. Sacrifice, Ext. 2811.

BABY CARRIAGE - Converts to carbed. Blue, excell. cond. \$8. Also, Welsh stroller, fringed top, package rack on back, brake. Excell. cond. \$7. Ext. 2811.

FURNITURE - 2 cushion Lawson couch, 2 leather-top mahogany end tables, 1 leather-top lamp table. W.H. Reed, Ext. 2204.

BEAGLE PUPS - AKC Registered, avail. Dec. 19. Mac Titmus, Ext. 439 or 281-9559.

POWER HANDLE - Toro with elec. starter, 3 yrs. old with Toro Snow attachment. \$90. Also, Craftsman lawn sweeper, a yr. old. \$20. S. Mars, Ext. 2703.

SNOW TIRES - Two, mounted on Chev. rims, 6.70x15, used. \$20. GR 5-2706.

MISC. FURNITURE - Sofa, sleeps two, has slipcovers. \$20. Kitchen table and 4 chairs. \$8. Two roll-away beds. \$12. Utility cart. \$5. 9 pc. attachment kit for Eureka upright vacu-

In an attempt to break the world record, U.S. Chess Champion Bobby Fisher will play against 400 players simultaneously (200 with white and 200 with black) on November 27 at 7:30 p.m. in the Grand Ballroom of the Hotel Astor in New York City. The fee for playing is \$3.00; for on-looker, \$1.00. Anyone interested in attending should contact Martin Van Lith, Ext. 565.

THEATER GROUP NOTICE

Come out and join the Theater Group for an interesting meeting in the Recreation Hall on Thursday, November 21, at 8:30 p.m. The winter production will be announced. The program for the evening will be "Two for the Seesaw", and refreshments will be served.

um cleaner, new. \$8. Heathkit speaker SS-2. \$20. GE washer, ringer type. \$8. Ext. 509.

STEREO - With planter top. 60 in. L.x19½ H. x16 D. Modern, walnut, new, TV prize. \$675. value, will sell for best offer over \$300. Call 751-1277.

MIRROR - Antique Dolly Madison mantle type (circa 1820) Excell. cond. AT 6-0428.

BICYCLE - Boy's 20 in. Lady's red wool dress coat, size 12. Men's skis, poles & boots, size 10½. AT 6-0428.

REC. ROOM FURNITURE - 2 orange leather sofas, 3-walnut colored end tables, 1-walnut colored kidney shaped coffee table, new and in excell. cond. Sacrifice, price \$115. H. Lobe, Ext. 2285 or C. Lobe, Ext. 2260 or JU 8-1855 after 6 p.m.

TV -8in. Delmonico \$75. Harmonica, Hohner w/64 chromatic. \$10. Guitar, classical. Amplifier and speakers. \$25. Hard top for MGA. \$140. L. Barlow, Ext. 2871.

BUILDING PLOT - 100x360. Munsell Rd, E. Patchogue. AT 6-9436 after 5:30 p.m.

S.S.B. EXCITER - Phasing type. Similar K4EEU. G. Kiriokos, Ext. 422.

HOCKEY SKATES - Boy's, size 12 and 2. \$2.50 per pair. Girl's figure skates, size 2, good cond. \$5. Children's Northland skis, steel edges, 42 in. w/bamboo poles. \$10. Boots, size 1. \$6. Kneissel combi skis, 8 yrs. old, w/safety bindings, good cond. 190cm. \$30. Steel poles, 50 in. \$5. Car top ski rack, \$5. D. Christman, Ext. 731.

ICE SKATES - Woman's size 7, excell. cond. \$5. Ext. 2194.

RIFLE - Winchester model 88. 308 cal. Never used. Gun case and sling incl. \$145. value. Will sell for \$115. H. Lobe, Ext. 2285.

HIGH CHAIR - Square type. Round blonde coffee table. Baby jumper chair. Rose lamps & shades, 25 in. Green velvet gown, wedding hoop. Reasonable prices. AT 9-1754.

RECEIVER - Communications, Heath Mohican, transistorized, excell. cond. Reasonable price. G. Llacer, Ext. 618.

BED - Maple double bed and spring. Colonial style. \$15. Mary, Ext. 603.

HALLICRAFTERS RECEIVER - SX101 mark 111A. 80-40-20-15-10 meter bands. Add. dial calibrated for use w/ either 2 or 6 meter converter. AM-CW-SSB, 100 KC calibrator, very good cond. C. Porter, Ext. 2373.

MOVIE CAMERA - 8mm Sankyo 8-S with wide angle and tele lenses, zoom view finder, very good cond. \$25. German 35mm camera Robot Jr. Xenon 1:1.9, auto. film advance (can take up to 5 pics per second). Beautiful compact machine with accessories. \$65. B. Diehn, Ext. 732.

HIGH CHAIR - Like new, \$12. A 12 gal. Mirax outboard motor gas can. \$10. Plastic windshield for boat, 6 ft. wide. \$7. B. Espensen, Ext. 2287.

RADIO - Portable, 6 trans. pocket size with earphone. New. \$10. Mechanical drawing set, 8 instruments. Keuffel & Esser Mercury. Excell. cond. Ext. 2709.

SPEED GRAPHIC - 2¼x3¼ incl. case, 6 film holders, lens shade and filters. Reasonable. Ext. 2709.

MOTORCYCLE - 40 hp two cyl. 4 cycle, air cooled B.S.A. in good cond. \$70. Also, one man helicopter, two bladed rotor with control linkage. \$95. Ext. 2488.

HOUSE - Five year old Colonial Cape. 8 spacious rooms, 2 full baths. Fireplace, 2-car garage, choice location, \$27,000. HR 2-1759.

HOUSE - Three bedrm. Ranch. Dining room with sliding glass doors to enclosed patio. Fireplace. Mastic Road, ½ mi. from Firehouse and stores. Taxes about \$300. \$16,000. Ext. 2152, Bob.

HOUSE - 7 rooms, 2 baths, 75x150 ft. plot. N. Howell's Pt. Rd., Bellport. \$14,000. AT 6-8281.

HOUSE - 6 rm. Ranch. 3 bedrms., attached garage. s/s, patio, fenced corner plot 96x100. No. Brentwood area, ¾ mi. from No. 54 exit on LI Expressway. Asking \$18,000. P. Ettari, Ext. 2407 or BR 3-6436.

TRAILER - Master Craft boat trailer for 14 ft. boat with crane and stop lights. \$60. Ext. 624.

SAIL BOAT - Star class 23 ft. s/s rigging, dacron sails. All latest fittings, comp. including trailer - excellent racing cond. \$1095. MO 5-8317.

WANTED

RUBBER TREE - Cissus, ivy or other green house plants. Citron, Ext. 714.

FILE CABINET - Four drawer, reasonable price. AT 6-0428.

ALTERATIONS - On women's dresses will be done by woman living on site. M. Diehn, Ext. 2782.

ARM CHAIR - One-old, comfortable and inexpensive. Also, twin or double bed in reasonable cond. Ext. 2908.

KITTEN - In time for Christmas. Male or female, must be affectionate and pretty. Will receive much T.L.C. from 8 yr. old. Kay Paul, Ext. 731.

VIOLIN - Full size. Lipton, Ext. 782.

HOME - For automatic dishwasher in need of repair. Free. Ext. 2556.

FOR RENT

STUDIO APARTMENT - Attractively furnished. Utilities incl. Private entrance. Large bed-sitting room, comp. kitchen, shower and bath, large storage room. H. Williams, Ext. 2127 or GR 5-5094 evenings.

APARTMENT - Cozy, three room furnished apartment, in Mastic Beach. Reasonable, utilities incl.; separate entrance. 281-8757 after 6 p.m.

CARPOOLS

DRIVER - Would like to join or form carpool from Indian Head devl. in Sayville. E. Bihn, Ext. 2631.

RIDE NEEDED - From Parkview Dr., off Wm. Floyd Pkwy. E. Daw, Ext. 2589.

DRIVERS - Wanted to join carpool in Massapequa, Mass. Park or Amityville area. D. Eversley, Ext. 2158.

DRIVER - Wanted to join existing carpool from Miller Place - Sound Beach area. 8:30 to 5:00. Jack, Ext. 553.

LOST AND FOUND

FOUND - Box containing 3 lense filters.

FOUND - Key, gold, with initial B.

FOUND - Necklace, gold chain with grey stone.

FOUND - Pictures of a baby at T206.

LOST - Hubcap for Plymouth last Thurs. in new apartment area. B. Diehn, Ext. 732 or 2782.

PEN - Parker 61, stainless-steel barrel and cap, vicinity of 60-in. cyclotron, on Nov. 1. J. Mollenauer, Ext. 2292.

Personnel Services, 3 Center Street

SOLUTION TO CHESS PROBLEM

- | | |
|------------|--------------------------|
| 1. Black's | 1. RxB Check wins, e.g., |
| 2. QxR | 2. B-Q6 Check |
| 3. K-B3 | 3. B-N5 Check |