

the Bulletin Board

VOLUME 17, NUMBER 12

Published by the BNL Personnel Office

DECEMBER 10, 1963

CLARION WIND QUINTET CONCERT THIS THURSDAY

Dec. 12 - 8:30 p.m. - Brookhaven Center

The second concert of the 1963-1964 BERA Concert Series will be presented on December 12 by the Clarion Wind Quintet. The Quintet is comprised of Philip Dunigan, flute; Henry Schuman, oboe; Robert Listokin, clarinet; Howard Hillyer, horn; and Maril Poplin, bassoon.

Program

Carminas (A collection of 15th and 16th century contrapuntal music)

Sonata in B Flat Major for flute and oboe
G.P. TELEMANN

Quintet, Op. 51 W. RIEGGER

Divertimento in D Major for wind quartet
J.M. HAYDN

Quintet, Op. 43 C. NIELSEN

Ticket prices are as follows: Adults, \$3.00; children (under 18), \$1.50; and guests; \$3.50.

AEC BROOKHAVEN OFFICE AWARDS SERVICE PINS

Mr. E.L. Van Horn, Manager of the Atomic Energy Commission's Brookhaven Office, awarded service pins on December 4, 1963 to four employees who have completed twenty years of Federal service. Recipients of the awards were Gordon E. Stubbings, Director of the Operations Division; Charles G. Yax, Director of Finance and Administration; Theresa Barbato, Finance and Administration Division; and Marion C. Willigan, Patent Group.

BNL VISITORS

Ground breaking ceremonies for the Applied Mathematics wing of the Physics Building will take place on December 13. Dr. Leland J. Haworth, Director of the National Science Foundation, will be the principal speaker.

Officers and personnel of the Nuclear Ship Savannah visited the Laboratory on December 10.

SQUARE DANCE

DECEMBER 11 — 8:30 P.M.
RECREATION BUILDING
ADMISSION FREE!!

BERA SEAL CONTEST WINNER



Congratulations are due Donald A. MacCornack, of the Architectural Planning Division, who is the winner of the BERA Seal Contest. His design, pictured above, is now the official seal of the Association. The BERA Board would like to thank all those who submitted entries. Over fifty entries were received, with the final selection made among nine designs!

The tri-bow of the official seal symbolizes "Opportunity through BERA": (top) to serve, (right) to create, and (left) to compete. The colors are BNL, white in a blue field; Employees' Recreation Association, blue in a white field; and the tri-bow in red.



John Binnington (left), President of the BERA Board, presents check to Donald MacCornack for his winning entry.

NON-TAXABLE SICK LEAVE

The Internal Revenue Code of 1954 provides that payments made to employees for sick leave under the Laboratory sick leave policy may, under certain circumstances, be excluded from gross income for Federal income tax and Social Security purposes. Payments received under the following circumstances may be excluded:

1. If absence from work is caused by **sickness** extending beyond seven consecutive calendar days, sick leave payments up to a weekly rate of \$100 attributable to the eighth and all consecutive days of absence thereafter may be excluded from gross income.

2. If absence from work is caused by **sickness**, and the employee is **hospitalized** for one or more days during that absence, sick leave payments up to a weekly rate of \$100 attributable to the first day of absence thereafter may be excluded from gross income.

3. If absence from work is caused by **personal injury** (either occupational or non-occupational), sick leave payments up to a weekly rate of \$100 attributable to the first day of absence and all consecutive days of absence thereafter may be excluded from gross income.

Any employee who has sick leave payments during 1963 which fall into one or more of the above three categories should fill out Form No. 989-A, obtained through his department, **immediately after the illness** and return the form to the Payroll Section. It is important to note that Form 989-A should be completed upon the employee's return to work so that the information can be reported on the W-2 form next year. The Payroll Section **cannot** process forms received **later than December 23, 1963**, for inclusion in 1963 income tax information. If you fail to report non-taxable sick leave at the time it occurs, it will be assumed that the sick leave payments are taxable.

If an employee elects to use vacation leave to provide wages while absent because of illness or injury, vacation pay may be considered in computing the amount of sick pay exclusion.

CAFETERIA SPECIAL

THURSDAY, DECEMBER 12

- Small Juice
- Tossed Green Salad
- Celery & Olives
- Roast Sirloin of Beef**
- Mashed Potatoes & Peas
- Shortcake
- Nuts & Mints
- Beverage
- \$.99

STAFF LUNCHEON CLUB ANNOUNCEMENT

The House Committee of the BNL Staff Luncheon Club has ruled that anyone joining the Club in December, 1963 will be exempted from payment of any dues this month. The first payment of dues will be the normal one required in January, 1964. Membership cards can be obtained at the Brookhaven Center.

The Committee reminds all members that, on request, they may obtain a card, free of charge, extending Club privileges to their spouses.

THIRTY-SECOND BROOKHAVEN LECTURE

By:
HOWARD J. CURTIS, Biology Department
Title:

"THE BIOLOGY OF AGING"

Lecture Hall, Wed., Dec. 11, 8:00 p.m.

A buffet supper (\$2.75) will be served at the Brookhaven Center before the lecture, beginning at 6:00 p.m. Reservations should be made at least one day in advance by calling Ext. 2302 before 5:00 p.m. or Ext. 2453 in the evenings.

Refreshments will be available in the Exhibit Hall lobby following the lecture.

Arrivals and Departures

WELCOME TO BNL

AGS		
Alice M. Hochberg		Ext. 664
Robert L. Johnson		2410
CENTRAL SHOPS		
Robert E. Craig		566
FISCAL		
Warren Valentine		2695
MEDICAL		
Joan Trerotola		301-37
PHOTOGRAPHY & GRAPHIC ARTS		
William J. Bottinger		2191
PHYSICS		
Barbara A. Smith		574
PLANT MAINTENANCE		
Charles F. Van Valkenburgh		639
REACTOR		
Michael J. Howley		692
SECURITY		
Kenneth J. Weiss		411

RECENT DEPARTURES

CHEMISTRY	
Patricia Walsh	
PHYSICS	
Paul Kienle	
John A. Moore	
John J. Russell, Jr.	
PLANT MAINTENANCE	
Raymond R. Trinowski	
SECURITY	
Jack Impellizzeri	

PERSONNEL SERVICES

Recreation Office — 3 Center St.
9:00 a.m. — 1:00 p.m.

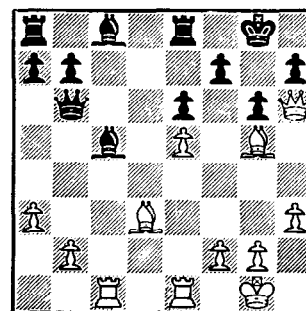


FLASHBULBS

Arrangements have been made to offer employees a 25% discount on the purchase of flashbulbs. A stock of the most popular sizes in both blue and white is now on hand for resale.

CHESS PROBLEM

In this week's problem, it is White's move. Black has a threat going, but is it strong enough to win? Solution elsewhere in this week's BULLETIN BOARD.



DANCE CLASS POSTPONED

The Arthur Murray dance class scheduled for this week has been postponed to make way for the Square Dance to be held on Wednesday, December 11. The next class will be held on Dec. 18.

MAILING CHRISTMAS CARDS

Postmaster Garret of the U.S. Post Office requests that you separate your Christmas cards into boxes or bundles according to city or state destination before bringing them in to be mailed.

CHESS TOURNAMENT POSTPONED

Due to the untimely death of President John Kennedy, and in accordance with the thirty-day period of mourning, the chess tournament against Bobby Fisher scheduled at the Astor Hotel for late November was postponed until January. Employees participating in this tournament will be notified of the exact date by mail.

The U.S. Open Golden Knight Championship opens this month. Entry fee is \$4.00.

SKI CLUB FINALE?

For several years now we've had what most would call an "active" Ski Club. We thought this year would be no different, or - if different - more active. So our ringleaders planned winter meetings with excellent films, and drew up tentative trip and instruction plans for action by the membership.

However, after two meetings it looks like we have no membership, with attendance at an all time low. Where have you been? Remember, this is your activity - a club activity - not a travel information service run by a few individuals. We're going to give it one last try this year. If you want to be part of a "Ski Club Activity" come out at **7:00 p.m. - Thursday, December 12** to the Recreation Building. Bring your ideas and your enthusiasm. If you can't possibly make it the 12th, call Don Gardner, Ext. 2516, and express your interest.

RECREATION HOLIDAY SCHEDULE

Recreation Building

Closed the week of Dec. 23 and New Years Day, Jan. 1.

Swimming Pool

Closed Dec. 24, 25, 31 and Jan. 1. Open Dec. 26, 27, 30 and Jan. 2, 3.

Gymnasium

Closed for evening activities the week of Dec. 23 and on Dec. 31 and Jan. 1.

NIMRODS ARCHERY CLUB

Every Wednesday evening from 5:00 to 7:00 p.m., the Gym is free for archers to practice. New members are very welcome. Experienced archers will be glad to give novices a hand in learning the art of target shooting - you may learn either the instinctive or the free style method of shooting.

Notices concerning the new automatic archery lanes in Hempstead are posted on bulletin boards in the Cafeteria, Gym, and Recreation Building. Anyone (Nimrods member or not) who is interested in making up a group for an evening visit to these lanes (preferably on Thursday) should call Mary Hall, Ext. 2629. We will arrange to leave directly from the Laboratory at 5:00 p.m. and pick up a bite to eat on the way. The particular date for the trip will be announced when we have a consensus of opinion from all interested persons.

FOLK DANCING

Don't miss out! There is folk dancing every Monday evening from 8:00 p.m. to 11:00 p.m. at the Recreation Building in the Apartment Area.

GYM CLOSED ON DECEMBER 11

The Gymnasium will be closed on Wednesday, December 11, for all physical activities because of the scheduled Bubble Chamber Christmas party. This will not affect the Swimming Pool, which will remain open that evening. The Gym will resume its normal schedule the following day.

SOLUTION TO CHESS

White wins with:

- | | |
|---------|---------|
| 1. RxB | 1. QxR |
| 2. B-N5 | 2. Q-B1 |

(Why not QxB is a good question, but White's B-B6 leads to mate.)

- | | |
|--------------|---------|
| 3. BxR | 3. QxB |
| 4. B-B6 | 4. Q-B1 |
| 5. QxQ Check | 5. KxQ |

6. R-Q1 and White wins a piece by threat of Rook to Queen 8 Mate.

CLASSIFIED ADS

FOR SALE

1953 PLYMOUTH - Six cyl., std. shift. Good body and engine. \$75. B. Diehn, Ext. 732 or 2782.

1961 COMET - Two door wagon. Black with red interior, new tires, r&h, std. shift. "For quick sale." Ext. 2610.

1964 VOLKSWAGEN - Blue sedan, heater. G. Will, Ext. 2607.

1959 ENGLISH FORD - Consul. 4 door sedan. Owner left country. C. Raseman, Ext. 348 or 941-4078 after 6 p.m.

1957 VOLKSWAGEN - Needs valve and tune-up job. Ext. 2579 or 2637.

1960 THUNDERBIRD - Black hardtop with red interior. Full power, air conditioned, new tires and brakes. G. Zelenka, Ext. 589 or HR 2-1096 after 6 p.m.

1955 BUICK - Hardtop, 4-dr. Power steering and brakes. Good cond. Ext. 423.

1957 FORD - Wagon. R&h, O.D., 58,000 mi. \$400. R. Taylor, Ext. 2814 or AT 6-0615.

1958 FORD - 4 dr., 8 cyls., auto trans. R&h. \$395. Bob, Ext. 691.

1957 CHEVROLET - Hardtop, 2-dr. 6 cyl., std. shift. R&h, new tires. In good mechanical cond. \$375. J. Cross, Ext. 2391.

1956 PONTIAC - Wagon. R&h, w/w, hydraulic, excellent cond. \$425. Ext. 2852 or MO 5-8137.

1961 VOLKSWAGEN - Sunliner, green, safety belts. Very clean; owner leaving for Europe. \$1150. P. Kelly, Ext. 2382 or GR 5-3516.

1962 AUSTIN HEALEY - Sprite. MkII. Red, wire wheels, many extras. P. Fallon, Ext. 2718 or SE 2-6746.

1960 MGA - White/black interior., w/w, tonneau, seat belts, r&h, adjustable steering column, clear car. \$1365. R. Meyer, Ext. 481 or LT 9-5757.

1962 PONTIAC - Tempest LeMans. Excell. cond. Very low mileage. Ext. 2665 or SH 4-5210 after 5:30 p.m.

1957 DODGE - Coronet, auto. trans. \$300. Can be seen aside Recreation Center. Ext. 2803 or 718 after 6 p.m.

1958 PONTIAC - Chief. V8, std. trans., r&h, new tires, new brakes. Tip-top cond. \$550. JU 8-1179 after 6 p.m.

1960 ENGLISH FORD - Consul. All red (good Christmas present for wife). Two new snow tires, r&h, good motor \$450. G. Hambley, Ext. 481.

1961 N S U Sports Prinz - Bertone fast-back coupe, air cooled 2 cyl. ¾ litre engine. W/w tires, 4 spd. box, 18,000 orig. miles, 35 mpg. \$700. A. Enright, Ext. 2126.

1961 MGA - Roadster. Ext. 2600 or TU 8-0822 after 6 p.m.

HOUSE - Stony Brook, spacious 3-4 bedrms., den, fireplace. Private beach. Two year old custom. Low 30's. Will consider rental. January occupancy. 751-0152.

HOUSE - No. Brentwood area. 6 room ranch with 3 bedrooms and attached garage. Storms and screens, patio, fenced corner plot 96x100. Asking \$18,000. P. Ettari, Ext. 2407 or BR 3-6436.

HOUSE - Bellport, No. Howell's Pt. Road. 7 rooms, 2 baths, 75x150 plot. \$13,000. AT 6-8281.

HOUSE - Medford area. 2 yr. old Ranch. 3 bedrms., 1½ baths. 100x150 landscaped plot. 20 min. from Lab. \$17,250. Ext. 2179 or GR 5-0916 after 5:30 p.m.

HARD TOP CRUISER - 1956 23' Crestmark, with full canvas, sleeps two. Head & galley. \$2000. AT 6-1205.

CABIN BOAT - Nova Scotia built. 38' w/12' beam. Built 1950. A. Tierney, Ext. 439.

RUNABOUT - 1961 Elgin fiberglass with 40 hp elec. motor, trailer, battery, new windshield incl. \$500. Nimmo, Ext. 2348 or 2278.

SKIFF - Hard top Jersey, 25'x10' with 135 hp Palmer. 49 watt radio, depth finder, head, etc. Out of water, John Ext. 2376.

SKIFF - Amesbury, 16' Lapstreak const. Good rough water boat. John, Ext. 2376.

CAMERA - German 35mm Robot Jr. with Xenon 1:1.9, auto. film advance (up to 5 pictures per sec.) and separate rangefinder and lightmeter. \$55. incl. accessories. B. Diehn, Ext. 732 or 2782.

FREIGHT TRAIN SET - Lionel 027 with reversing hand car and transformer, in orig. cartons, with 4 track switches, 2 uncouplers, trestle set, extra tracks, Plasticville village. \$20. Atlas H.O. Train set with large transformer, electric track switch, trestle set, extra track, Plasticville H.O. size village, enough plywood for a table. \$20. Both sets used on same table - both sets \$30. Ext. 590 or 591.

ERECTOR SET - Gilbert, No. 10½ (large size). \$12.50. Ext. 590 or 591.

CAR CHAINS - For 15 in. wheels. \$6. Child's tricycle, \$6. Remco rocking horse, \$12. Starret 64A Test indicator, \$6. Starrett 56A Surface gage, 6. L. Blum, Ext. 782.

PUPPIES - AKC registered Beagles, 6 wks. old Dec. 12. Mac Titmus, Ext. 439 or 281-9559 after 5:30 p.m.

PUMP - Deep well jet Aurora ½ hp. One year old. Excell. cond. \$35. C. Goodzeit, Ext. 493 or AT 6-0271.

SKATES - White figure skates, girl's size 2, ladies size 7, men's size 7. Remington single shot bolt action rifle, new \$15. Ext. 2866.

SANDWICH GRILL - Westinghouse electric in good cond. B. Keck, Ext. 752.

ACCORDION - Settimio Sporani Model 67. 120 bass, 7 treble switches, 2 bass switches, 17 in. keyboard, black with white pearl case. Brand new cond. Best offer. Lists for \$435. SH 4-5242.

ROOSTERS - Bantam, and hens, \$1.25 each. Decorative fowl - don't require penning in. Excellent for cleaning up lawns, gardens. Jungreis, Ext. 301-45.

BRIDGE TABLE - And four chairs. Alum. and foam rubber, excell. cond. \$50. Ext. 367.

CHILD'S CRIB - Good cond. HR 2-0215.

REFRIGERATOR - Frigidaire. Also GE refrigerator. Both good cond. HR 2-0215.

PIANO - Upright. K.W. Lai, Ext. 2663 or SH 4-9682.

TYPEWRITER - Smith Corona semi electric. 2 years old, like new. Orig. price \$170. Will sell for \$90. Ext. 2506 or AT 9-0742 after 6 p.m.

BABY EQUIP - Thayer birch crib with mattress, \$5. High chair, chrome, with plastic tray, \$3.50. Safety gates, \$1. Cohn, Ext. 2891.

TRAINS - Lionel 0 gauge, twin diesel engine, one switch engine, switches mounted on 4'x8' x¼ in. board. Extra track, two transformers, tunnels and station, etc. \$75. YA 4-6370.

ELECTRIC RANGE - GM Frigidaire, Westinghouse auto. washer, Westinghouse dryer, ea. \$30. Fireplace set and grate \$5. Ext. 2882.

DIVING OUTFIT - Scuba, slightly used. Tank, regulator, wet suit, mask, fins, snorkel, weight belt and underwater safety book. Half price. Comp. set \$110. T. Becherer, Ext. 301-12 or 281-5852 after 8 p.m.

TV - Admiral 17 in. table model with swivel table. Needs one or two small tubes. \$20. F. Enright, Ext. 2124.

STEREO SYSTEM - Comp. Garrard Type A autoturntable, Elac 220S Mag. Cart., Lafayette Stereo AM-FM tuner, Lafayette 40 watt stereo all transistor amplifier, Lafayette 12 in. Coaxial speakers in Mahogany Eliptoflex enclosures. \$450. value for \$275. D. Huene, Ext. 2338 or 281-9592.

CAMERA - 35mm SLR, Nikon F. Photomic coupled CDS Meter, 58mm F1.4 lens with hood and case. Finest single lens reflex avail. \$295. D. Huene, Ext. 2338 or 281-9592.

FOLDING BED - Steel with good mattress. \$5. Rural mail box, mounted on post. \$2. AT 9-2382.

DINING ROOM SET - Dark wood, circular table, vinyl top 42 in. Four upholstered chairs and leaf for table. \$80. Dishwasher, one year old Westinghouse, holds service for 12. \$90. Lamp, floor to ceiling with three lamps on 8 ft. brown metal pole. \$5. Ext. 624, D. Macchia.

ACCORDION - DelMar, 3 shifts, 120 bass, red. Best offer. Ext. 695.

TV - Console, 23 in. GE, Danish Modern. \$120. In good cond. See at 32 Lewis Ave., Patchogue. GR 5-7464.

BIKE - Boy's size 20" black and chrome. Good cond. \$10. Lt. 9-5699.

TRUNKS - Two large steamer traveling wardrobe type. \$5. ea. Wooden crates, typical dimensions 2½ to 3 ft. nominal cost. Tire & wh. for Oldsmobile. \$7. Ext. 2657.

SKI PANTS - Men's stretch size 34R. Blue, like new. \$15. Men's after ski boots from Austria, size 8-8½C. \$7. E. Raka, Ext. 310.

TIRES - For beach buggy. Two 820x15, two 710x15 for Jeep or Ford, mounted on 10 in. rims with four new tubes. \$45. D. Albert, Ext. 2407.

MISC. ITEMS - Double bed, 54x80 extra length firm foam-rubber mattress, box spring, metal frame, in excell. cond. \$35. Girl's bike, 26 in. \$12.50; also girl's 20 in. bike with training wheels, \$10. Tricycle, 20 in. \$7. Oak 5-drawer chest, \$15. Two pair girls figure skates sizes 4 and 6. \$4. each. Ext. 2318.

BED - Mahogany double. Chest of drawers; vanity with mirror and vanity chair. Reasonable. GR 5-5894.

MIRROR - Antique Dolly Madison mantle mirror, circa 1820. Fine cond. AT 6-0428.

MISC. ITEMS - Simmons Hide-a-bed Lawson style. Cherry Antique satin upholstery. Excell. cond. Boy's bike, 20 in., with training wheels. Men's skis, poles and boots, (10½). Ladies red wool coat, size 12. AT 6-0428.

BICYCLES - English light weight, 26 in. \$5. Boy's Schwinn 24 in., red. \$18. Also, hockey skates for 5-8 yr. old. \$3. Shaver, Ext. 315 or AT 6-0596.

REFRIGERATOR - GE, excell. cond. Being replaced by one with freezer unit. Asking \$40. Ext. 565 or 281-9528.

SKATES - Ladies, white size 5½. Very good cond. \$5. Ext. 360.

SKID CHAINS - Heavy duty, never been used. Fit 600-560-590-13 tires. \$5. T. Honnett, Ext. 566.

WANTED

FILE CABINET - 4 drawer, reasonable price. AT 6-0428.

RIFLE - Lightweight .22 cal. single shot in good cond. JU 5-8322.

CB TRANSCEIVER - With mike. Prefer a base station with at least 2 channels. Ext. 2254, Ernie.

BATTERY - Old six volt car model with two cells still working. Prefer type with terminals of all cells exposed. Ext. 2657.

TYPIST - To do 2500 words (non-technical) and carbon copy, from typed original. William Hilger, Ext. 578.

ENCYCLOPEDIA - Set for Jr. High School student. 281-7963 after 6 p.m. or Ext. 2591.

VIOLIN - Full size. Lipton, Ext. 782.

CRIB - Playpen, one or both. Mary Hall, Ext. 2629.

BIKE - Boy's model, size 26". Hope to pay \$10. maximum. John, Ext. 2376.

VOLUNTEER NURSES - Interested in working in Planned Parent-hood Clinic, Patchogue, 3 hours a week. GR 5-5705 mornings.

REFRIGERATOR - Preferably with auto. defroster. Ext. 345 or AT 9-0425.

From Dec. 27 to Jan. 5, someone to care for older women recovering from broken hip. Either days, nights or 24 hours. No special nursing care necessary. No housework other than meals for self and invalid. AT 6-0932.

CARPOLS

DRIVER - Needed to complete 3 man punctual carpool from Patchogue, between Main St. and Sunrise Highway. Ext. 734.

PAYING RIDER - Needs ride from Robinson Ave., Medford. D. Mistler, Ext. 780 or GR 5-7615 after 6 p.m.

DRIVER - Wants to join carpool from Indian Head Devp., Sayville. E. Bihn, Ext. 2631.

DRIVER - Wanted for existing carpool from Babylon-West Islip area. 8:30 to 5:00 p.m. W. Rodgers, Ext. 782.

FOR RENT

ROOM - Large furnished room, private bath, 7 miles from Lab. on a quiet road. Park Lane, Middle Island. Reasonable. YA 4-3504.

STUDIO APARTMENT - Attractively furnished. Utilities incl. Private entrance. Large bed-sitting room, comp. kitchen, shower and bath, large storage room. H. Williams, Ext. 2127 or GR 5-5094 evenings.