

# the Bulletin Board

VOLUME 17, NUMBER 14

Published by the BNL Personnel Office

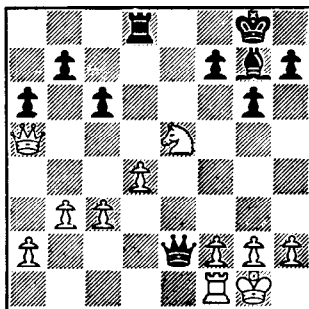
December 31, 1963

## DATE NOW SET FOR BERA ART SHOW

In the December 3 issue of the BULLETIN BOARD, artists were notified of tentative plans for a second exhibition of the artistic works of BERA members. A committee has now been formed, and the opening date has been set. The exhibit will run from Tuesday, February 11 through Thursday, February 20. At this time, it is not possible to determine the number of creations from each artist that can be exhibited; this will depend upon the number of artists wishing to enter their works. Early in January, a further announcement will appear in the BULLETIN BOARD, together with a registration blank. In the meantime, it is hoped that all BERA artists, however modest they may be about their talents, will prepare some interesting works of art. The first show, held in February 1962, was a great success. Let's have an even better exhibit in 1964!

## CHESS PROBLEM

In this week's problem, it is Black's move and win. Solution elsewhere in the BULLETIN BOARD.



## PERSONNEL SERVICES

Recreation Office - 3 Center Street  
Daily 9:00 a.m. - 1:00 p.m.

How to! - A collection of pamphlets published by the Athletic Institute, a nonprofit organization, are now available for purchase. This How To Improve Your Sports series, is written by the outstanding experts in each field. Those on hand at 50¢ per copy include: Bowling, basketball, tennis, swimming, golf, archery, fencing, volleyball and badminton.

## 1964 BNL HOLIDAYS

Listed below are the Laboratory holidays scheduled for the calendar year 1964:

|           |             |                       |
|-----------|-------------|-----------------------|
| Wednesday | January 1   | New Year's Day        |
| Friday    | February 21 | Washington's Birthday |
| Friday    | May 29      | Memorial Day          |
| Friday    | July 3      | Independence Day      |
| Monday    | September 7 | Labor Day             |
| Tuesday   | September 8 | *Holiday              |
| Thursday  | November 26 | Thanksgiving          |
| Friday    | November 27 | New Fixed Holiday     |
| Wednesday | December 23 | **Half-Holiday        |
| Thursday  | December 24 | *Holiday              |
| Friday    | December 25 | Christmas             |

\*Additional holidays.

\*\*The half-holiday for employees who work other than the normal Laboratory work week will be the last four hours of their regularly scheduled work preceding December 24.

## BERA PRESENTS THE LYRIC TRIO

TUESDAY, JANUARY 14

ROBERT MANN, Violin    LEONID HAMBRO, Piano    LUCY ROWAN, Narrator

The Program will consist of piano-violin sonatas of Mozart and Beethoven played by Messrs. Mann and Hambro, and three fairy tales, narrated by Miss Rowan to the accompaniment of Messrs. Mann and Hambro.

Robert Mann is well known to concert goers as the first-violinist of the Juilliard String Quartet. Leonid Hambro is well known to WQXR listeners, and Lucy Rowan is Mrs. Mann. The Lyric Trio has been in existence for several years and performed last month at Carnegie Hall.

TIME: 8:30 p.m.

PLACE: Brookhaven Center

ADMISSION: \$3.00 each for employee or family member

\$3.50 each for guests

\$1.50 each for persons under 18.

## BOOKMOBILE VISITS BNL

Beginning Friday, January 3, through arrangements made with the Suffolk Cooperative Library System, the "Bookmobile" will visit us on alternate Fridays, from 9:45 to 10:30 a.m. It will be stationed opposite the People's National Bank. Approximately 2000 books, fiction and nonfiction, are part of the collection which will be offered for loan to employees for a two week period without charge.

## NEXT BERA MOVIE

"THE GIRL WITH THE GOLDEN EYES"

Next week, Thursday, January 9

## CAFETERIA SPECIAL

THURSDAY, JANUARY 2

Small Juice

Celery & Olives

Tossed Salad

Baked Sugar Cured Ham

Sweet Potatoes & Peas

Shortcake

Beverage

**\$.99**

## BULLETIN BOARD NOTICE

For all future BULLETIN BOARD questions, please contact Janet Whitehead or Marianne Clasen at the Personnel Office, Ext. 2109 or 2513.

*Arrivals and Departures*

**WELCOME TO BNL**

INFORMATION DIVISION  
 Joyce Ann Bahr  
 Beth P. Clasen Ext. 2273

PERSONNEL  
 Helen L. Bianchi 2104  
 Dorothy Donlon 2104

PHYSICS  
 Kenneth C. Gray 406

PLANT MAINTENANCE  
 John-Scesny

**RECENT DEPARTURES**

AGS  
 Gary L. Schluntz

APPLIED MATHEMATICS  
 Arlene S. Larsen

MEDICAL  
 Werner Beck  
 Norman Z. Glatstein

**ARMCHAIR ADVENTURER?**



Enjoy the music and dances of far-off lands right here at home. Kolos from Yugoslavia and syrto from Greece; horas from Israel and hambos from Sweden. On Monday, January 6, we're dancing these and many others. You're probably about to protest that you don't know any of them. No excuse - we'll be teaching them. The less you know, the more you'll learn. (We even have some special left-footed dances for people with extra left feet!) If you're already a folk dancer, don't protest at all - just come.

Festive garb is not inappropriate, what with the holiday season and all, but be sure to wear comfortable shoes.

See you at the dance.

Where?

The Recreation Building at 8:15 or thereabouts.

**SOLUTION TO CHESS PROBLEM**

With 1. Rook to Queen 4 Black wins.  
 E.g.,  
 2. Q-B7 2. BxN  
 3. PxB 3. R-Q8 and after a spite check wins a Rook and Mate next.

**CLASSIFIED ADS**

**FOR SALE**

1958 KARMEN GHIA - Black coupe with w/w's. 40 mpg. Original owner. \$850. Ext. 367.

1951 JEEP - Panel truck 1956 Chevy engine, 4-wheel drive. Needs finishing work. LT 9-3006 after 6 p.m.

1949 FORD - Conv. club coupe. Orig. paint, no rust or body rot. New w/w's. 56,000 orig. miles. Every conceivable deluxe '49 accessory. Original upholstery never uncovered (brown leather). Best offer takes this jewel. F. Kaiser, Ext. 2811.

1955 HILLMAN - Sports model. 4 cyl., 4-spd. trans., bucket seats, r&h, w/w's. \$150. Ext. 2692. J. Loper.

1953 BUICK - Special conv. Good body, fair top, 3 new tires. \$50. or best offer. Bayport area, HR 2-1612.

1960 FORD - Fairlane, 6 cyls., stick shift. Asking \$750. Ext. 691. Jack.

1961 COMET - Wagon, black, 2-dr., with red interior, std. shift. \$850. Ext. 2610.

1958 BORGWARD - Station Wagon. Brakes just relined. New tires on front, fresh snow caps on back. Used as a second car. Good cond. A. Hull, Ext. 595 or SH 4-5969.

1960 ENGLISH FORD - Consul. All red. Two new snow tires, r&h, good motor, \$350. G. Hambley, Ext. 481.

1957 ANGLIA - Fair cond., inspected, asking \$125. A. Herschman, Ext. 2341 or LT 9-7561.

1957 BUICK - Special, 4 dr. sedan. Engine and body carefully maintained. \$425. Ext. 590.

1959 ENGLISH FORD - Consul, 4-dr. sedan. Owner left country. \$450. C. Raseman, Ext. 348 or 941-4078 after 6 p.m.

1957 DODGE - Coronet, auto. trans. Can be seen aside Recreation Building. Aki, Ext. 2803 or 718 after 6 p.m.

1954 FORD - Good engine, 6 cyl. stand. shift; 2 poor, 2 good snow tires. 66,000 mi. Body needs work. \$50. A. Paskin, Ext. 2707.

HOUSE - Mastic Beach. One year old, 6 room ranch, on 80x100 ft. plot. Full finished basement with 12 ft. bar. 2 full baths. Fully landscaped, large patio. Incl. furniture and appliances, alum. storms and doors. \$15,750. AT 1-5898.

HOUSE - Bellport, No. Howell's Pt. Road. Seven rooms, 2 baths, 75x150 plot. \$13,000. AT 6-8281.

HOUSE - No. Brentwood area. 6 room ranch with three bedrooms and attached garage. Storms and screens, patio, fenced corner plot 96x100. Asking \$18,000. P. Ettari, Ext. 2407 or BR 3-6436.

STEREO HI FI - Columbia portable, 4-speed, 4 speakers, 4 controls. VM changer with diamond stylus. In excellent condition. Ext. 590.

ICE SKATES - Men's size 9 figure skates, in excellent cond. \$6. Ext. 590.

TRAINS - Lionel O gauge mounted on 4x8 ft. plywood; comp. with scenery, buildings, stations, roads, etc. Several sidings and elevated

crossover. Diesel engine, hand car, operating crane and milk cars, transformer, all in good cond. \$45. Stang, Ext. 379 or LT 9-3269.

GRILL - Westinghouse, can be used open flat for pancakes or closed for sandwiches. Good cond. \$7. B. Keck, Ext. 752.

TIRES - 2 Goodyear 670x15. Like new; also 2 wheels, if you're interested. AT 6-0275 after 5:30 p.m.

BOWLING BALL - and bag. Brunswick 16 lb. men's. \$5. Ext. 2577 after 12:30 p.m.

TRANSCEIVER - Heathkit CB-1 Citizen Band. Base unit, 5 chan. transmit. All channel receiver. No mike. \$25. with all crystals. B. Howard, Ext. 2314.

ICE SKATES - Girl's figure skates, one size 2 1/2 and one 5. \$7. for both. J. Cummings, Ext. 2358.

STORM WINDOWS - And screens, new. Various sizes of each. Double thick glass, bronze screening, woodlife coated wood. Never used. All at giveaway prices. Ext. 2811.

BABY CARRIAGE - Blue, with mattress and fitted sheets. Removable car bed. Excellent cond. throughout. \$8. Ext. 2811.

PARTS - For Chrysler Crown Marine Engine. Gen., starter, manifold, etc. G. Penny, Ext. 2511.

TURNTABLE - Rek-O-Kut, model K33, Audax tone arm, and G.E. GC7 stereo cartridge. \$30. Also, chairside equipment enclosure. \$10. J. Bauerfeind, Ext. 772.

SPRINGER SPANIEL - English, one year old. All shots, AKC Reg. Ideal dog. GR 5-4199.

SCOPE - Eico model 400, and low "C" probe. \$18. Ed, Ext. 2416.

STORM WINDOW - New, 31x55 1/2 in. Two-light wood, primed white. \$6. Ext. 2853 or AT 6-0798.

SHOT GUN - J.C. Higgins 12 ga. 3-shot. 28 in. barrel. Full choke; excell. duck gun. \$20. A. Torre, Ext. 423.

**CARPOOLS**

DRIVERS - For existing carpool from Oakdale-West Sayville area. F. Chandler, Ext. 2380 or 2384.

DRIVER - Wanted to share rides from Westhampton 8:30 to 5 p.m. B. Ruppert, Ext. 2382.

DRIVERS - Wanted to form pool from West Islip-Babylon area 4:30 p.m. to 1 a.m. It's a long, lonely ride. J. Ryan, Ext. 687.

DRIVERS - To join carpool from East Meadow-Merrick-Bellmore area. C. Ruege, Ext. 451.

RIDE - Wanted from South Country Shores. Will pay or drive. Ext. 2710 or AT 9-1760 after 6 p.m.

DRIVER - Wanted to complete carpool from Huntington. I. Feigenbaum, Ext. 2207 or H. Susskind, Ext. 2270.

**FOUND**

KEYS - Two car keys in brown case.

SCARF - Blue silk.

GLOVE - Tan wool with brown leather palm.

**Personnel Services - 3 Center Street**