

the Bulletin Board

VOLUME 17, NUMBER 17

Published by the BNL Personnel Office

JANUARY 21, 1964

BERA FILM SERIES Ingmar Bergman's

THE VIRGIN SPRING



Thursday, Jan. 23, Lecture Hall, 8:00 p.m.

"The Virgin Spring" is a film based upon a medieval folk-song known as "The Daughter of Tore of Vange." The folk-song exists in several versions both in verse and in prose. It was romantic in origin, but it was in Scandinavia that it gained the character of a legend, and it is only in Scandinavia that it has been connected with a specific spring and church. According to the legend, a young maiden called Karin was on her way to church when she was molested and killed by three brutal herdsmen, and her innocence was proclaimed for all by the miracle of a spring bursting forth from the spot where she lay. And at this spring her father vowed to erect a church to absolve himself for the sin of the revenge he had taken for his daughter's death. The embellishment of the legend both broadens and intensifies the story of the folk-song. This primitive drama of violence and revenge is put in a Christian setting with the need for atonement and the assurance of the grace of God as the important message of the folk-song.

NOTE: The new BERA Film Series schedule will be published in THE BULLETIN BOARD in the near future.

TELEPHONE CREDIT CARDS

To avoid the nuisance to you and to the Laboratory of those minor BNL telephone bills (as well as the 10¢ per call service charge), you are urged to take advantage of the convenience of a telephone company credit card for personal toll calls made from the Laboratory. A credit card may be readily obtained by calling the business office of your home telephone exchange.

NEWCOMERS WELCOME PARTY IS PLANNED

The BNL Hospitality Committee is planning a Newcomers' Welcome for the wives of new staff members – scientific, professional and administrative – as well as for women who have themselves joined the staff during the past year. The date set is Wednesday, January 29, from 3:00 to 6:00 p.m. at the Brookhaven Center. Individual invitations are being sent to all newcomers and to oldtimers, selected more or less alphabetically, from geographical areas surrounding the Laboratory. However, whether or not you receive an individual invitation, please feel free to join the party if you wish to be active in helping newcomers become acclimated to their surroundings.

Again this year, the object of the party is to gather together as many Lab newcomers and oldtimers as possible (keeping the number of each about equal) for fun and conversation. Tea, coffee, sherry and goodies will be served. Staff wives who act as area chairmen in the various towns and villages, near and far, will of course be present and anxious to meet and talk with newcomers to their neighborhoods as well as to the Lab itself.

If transportation to the party is a problem, contact Mrs. Joan Victoria, Ext. 493, who will put you in touch with your area chairman.

BACKSTAGE WORKERS NEEDED FOR "A THURBER CARNIVAL"

The Theater Group is anxious to have everyone get into the act who is interested in working on its current production, **A Thurber Carnival**.

People are needed to help set up and operate the stage and lights, care for costumes, help in make-up, ticket sales, etc.

If you are interested in lending a helping hand on any of these backstage activities, please get in touch with one of the following people:

Tony Nappi	Ext. 2374
Manny Hillman	2560
Eena-Mai Franz	650
Ed Sayre	2145
Ginnie Sayre	2345

A Thurber Carnival will be presented in the Theater on the evenings of February 27, 28 and 29.

BERA BOARD ELECTION

During the early part of February, an election will be held to fill three positions on the Executive Board of the Brookhaven Employees' Recreation Association.

The Board members at the present time are John Binnington, Mildred O'Neill, Leonard Baker, Don David, Lawrence Fuller and Alf Christoffersen. The terms of the latter three members expire on March 1.

The following slate of candidates has been selected by the BERA nominating committee for election to the Board:

BUD POLLOCK
JEROME WEISS
JERE AUSTIN
RAYMOND STOENNER
GEORGE JACKSON
ALBERT PRODELL

The present Board would like to express its appreciation to the members of the BERA nominating committee for its services in selecting the slate.

BNL VISITORS

On January 27 and 28, a group of professional science reporters from Columbia University's Advanced Science Writing Program will visit the Laboratory to meet with BNL scientists and tour some of the major research facilities.

NEXT DANCE

The Physics Design Group has come forward to take its place in the line of departments presenting BERA Dances.

They're signed up to do the honors for our Saint Patrick's Dance which will be held in March. Watch the BULLETIN BOARD for exact details and the date.

BERA BASKETBALL

With three weeks to go in the first half of League games, Applied Math still boasts an unblemished win record. Nipping at their heels are Physics (5-1), Blue Jays (4-1), and Old Timers (4-2).

The rest of the teams are laying plans for a better showing in the second half – knowing that all teams start again from scratch at the midway point. Looming as the clutch game in the first half is the A.M.D. vs. Jays encounter on February 4 at 7:00 p.m.

CAMERA CLUB MEETING

The special meeting postponed from last week will be held on Thursday, January 23, at 8:00 p.m. in the Recreation Hall. The representative from Photographs Unlimited is making every effort to be at the meeting this week, so Club members and other interested parties should do the same. This promises to be an interesting evening, so let's have a good turnout.

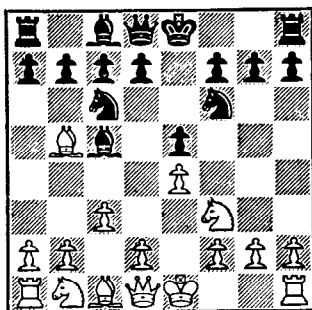
CAFETERIA SPECIAL**THURSDAY, JANUARY 23**

Small Juice
Celery & Olives
Tossed Salad
Roast Loin of Pork
Two Vegetables
Apple Pie
Beverage
\$.99

CHESS

This week we put the spotlight on openings. To a certain extent, openings are a question of fashion. A good opening is half the game won. This week we will discuss the Ruy-Lopez classical Benelux variation.

1. P-K4, P-K4. 2. N-KB3, N-QB3. 3. B-N5. Now, Black has a choice: N-Q5 leads to a lively type of game; or, without too much risk, Black could play P-KN3, or P-B4, or B-B4. The last one is known as the Benelux variation. Let's take it from Black's B-B4: White now has a choice between O-O or P-B3, the Pawn move being the better move with the possibility of securing control of the center. After Black's 4th move N-B3, we have the position as shown on the diagram. Now we continue as follows: 5. P-Q4, PxP. 6. P-K5, N-K5. 7. O-O, P-Q4. 8. NxP. 9. BxN. From the aggressive position of his king's bishop, Black disposes of good chances. Consider, for instance, 9. NxN, PxN. 10. BxP, B-R3. 11. QxP, BxR. 12. BxR, B-B5. Black now would win with the threat of mate on the back rank. Any questions about chess will gladly be answered by the BULLETIN BOARD's Chess Editor, Martin vanLith, Ext. 565.

*Arrivals and Departures***WELCOME TO BNL**

AGS	
Paul W. Neff	Ext. 2473
FISCAL	
Patricia A. Dubick	2342
Anna H. Jackson	2342
PHOTOGRAPHY & GRAPHIC ARTS	
Joseph P. Hanson	2815
PHYSICS	
Stephen D. Palermo	2677
Karen A. Roeser	2245
PLANT MAINTENANCE	
Charles E. Spillet	639
PURCHASING	
Catherine A. Mott	2495

RECENT DEPARTURES

AGS	
Ronald F. Weiss	
CHEMISTRY	
George H. Nancallas	
PERSONNEL	
William B. Braddon	
Gordon E. Haskin	

POOL SCHEDULE

TUESDAY THROUGH FRIDAY
5:00 P.M. - 10:00 P.M.

ELIGIBILITY AND ENROLLMENT FOR THE MEDICAL INSURANCE PLAN

FAMILY BENEFITS

When a single employee marries and wishes to change from the Single to the Family Plan, application should be made at the Personnel Office. If the application is made within ninety days of the date of marriage, no medical examination will be necessary. After ninety days evidence of insurability will be required.

MATERNITY BENEFITS

Maternity coverage for the wife of an employee with a Family Plan becomes effective nine months after the application for family benefits is approved.

STUDENT BENEFITS

Coverage for a dependent child is automatically cancelled on the December 31 following his 19th birthday. By payment of an extra premium equivalent to the premium paid by a single employee, children over age 19 are eligible for coverage if they fulfill all of the following conditions:

1. They are unmarried and make their home with the employee;
2. They are fully dependent upon the employee; AND
3. They are attending an accredited educational institution on a full-time basis.

PERSONNEL SERVICES

Recreation Office - 3 Center Street
Daily 9:00 a.m. - 1:00 p.m.

WORLD'S FAIR TICKETS

Reduced rates until February 29.* Industrial discount mail order coupons* are now on hand offering employees a savings on varied combination type tickets which include several of the Fair's feature attractions, such as "Dick Button's Icetravaganza," "Wonder World" at the amphitheatre, the "Dancing Waters Show," etc. Other items featured in the combo packages include food discount tickets, souvenir banners and a "One Day Itinerary." Five basic combination offers are supplemented by fifteen alternate packages.

Admission Tickets* - In addition to the above plans, single admission tickets will be sold at the Office at a reduced rate: Adults, \$1.50; * Children, \$.80.*

Tickets for the Fair will be honored on any day the Fair is open in 1964 or 1965: April 22, 1964 to October 18, 1964; and April 21, 1965 to October 17, 1965.

*On February 29, the advance sale of all Fair tickets will be concluded. Tickets offering discounts will still be available, but at an increased price.

BOAT SHOW

Discount coupons are now available for the Boat Show which is being shown indoors at Roosevelt Raceway, Westbury, February 1-9. Price with coupon is \$1.00.

DISCOUNT TICKETS

Discount tickets, good through February 1, are available for "Stop The World I Want To Get Off," playing at the Ambassador Theater in New York City.

WATCH FOR

Feb. 11-20 Employees' Art Exhibit
Feb. 18 Concert
Feb. 22 Harvard-Radcliffe Glee Club
(BERA Special)
Feb. 27-29 A Thurber Carnival
March ? Lab-wide Dance

SQUARE DANCE**WEDNESDAY, FEBRUARY 5**

Recreation Building - 8:00 p.m.
FREE ADMISSION - FREE ADMISSION

FOLK DANCING

Don't miss out! There is folk dancing every Monday evening from 8:00 p.m. to 11:00 p.m. at the Recreation Building in the Apartment Area.

BOOKMOBILE

Unfortunately, the Bookmobile was unable to be with us last week because of a scheduling difficulty. However, the unit will be at the Bank on Friday, January 31, between 9:45 and 10:30 a.m.

BERA SPECIAL EVENT**THE HARVARD-RADCLIFFE GLEE CLUB****(Featuring Ninety Voices)****SATURDAY, FEBRUARY 22****TICKETS ON SALE SOON****CLASSIFIED ADS****FOR SALE**

1962 VOLKSWAGEN - 28,000 miles, r&h, w/w's, \$1250. Must sell. Ext. 576.

1962 VOLKSWAGEN - Sun roof, red, 2-dr., w/w's, 30,000 miles. \$1300. Ext. 2511.

1961 OLDSMOBILE - Conv. 88. Power steering and brakes, r&h, auto. trans., excell. cond. \$1800. Bruce, Ext. 2376.

1955 PLYMOUTH - Good mechanical cond. R&h, standard trans., good tires, 2 batteries, inspected. Body needs work. \$75. Ext. 563.

1960 AUSTIN HEALY - Sprite. Lt. blue w/ white top, r&h, good tires, excellent gas mileage. Priced for quick sale. R. Roberts, Ext. 2137 or HR 3-1707.

1958 KARMEN GHIA - Black coupe with w/w's. 40mpg. Ext. 367.

1960 MGA - White w/black interior, w/w's, wire wheels, tonneau cover, seat belts, r&h, adjustable steering column. Under 30,000 miles. \$1300. R. Meyer, Ext. 481 or LT 9-5757.

1954 CHEVROLET - Bel Aire, 2 dr sedan. Good tires; powerglide. Best offer. Scott, Ext. 2876.

1959 ENGLISH FORD CONSUL - Four dr., sedan. Owner left country. \$395. C. Raseman, Ext. 348 or 941-4078 after 6:00 p.m.

1951 CHEVROLET - Sedan. Good running cond. Reliable transportation. \$125. J. Raynor Ext. 2692.

1957 FORD - 4-dr. sedan, Auto. trans., 2 new tires, plus 2 new snow tires. \$295. SE 2-4147.

1960 MERCURY - Station Wagon, 9 passenger. Auto. trans., power steering and brakes. \$1200. SE 2-4147.

HOUSE TRAILER - 1961. 50x10'. Two bedrms., wall to wall carpet. \$300 cash and take over payments. YA 4-6610.

MISC. FURNITURE - Two cordovan mahogany living room tables - corner table and cocktail table. Very good finish. Both \$50. Hank, Ext. 601 or LT 9-7785.

SNOW WHEELS - Two snow tires mounted on Chevy rims complete. Size 6:70x15. \$10. J. Koehler, Ext. 2687.

TABLE SAW - 8in. tilting arbor "Craftsman" with motor and switch. \$30. C. Porcaro, SE 2-8818 evenings.

PORTABLE STEREO - Ideal for teenager. In excellent cond. \$15. Also, radio, \$5. M.L. Williamson, Ext. 2812.

FURNITURE - Three piece modern living room set. Two chairs & couch with slip covers. Two modern tables (end table and coffee table). All blond wood in very good cond. Total value \$324. will sell all for \$135. R. Meyer, Ext. 481 or LT 9-5757.

TEST EQUIPMENT - Heath capacitor checker-inductance, resistance bridge, new model IT-11, perfect, \$25. Signal generator, .5 to 32MC, model RF-1, \$20. Sencore tube-tester, cost \$75. year old, perfect cond. \$50. Several electronic text books, manuals, etc. \$10. Phil Warner, Ext. 698 days or RA 8-0273 evenings.

BEDROOM SET - Roomy 5 piece mahogany set, reasonable. AT 6-0459 evenings.

SHOT GUN - J.C. Higgins 20ga. bolt action. Adj. choke, fired under 100 rounds. Price-including case-\$15. Hank, Ext. 454.

TAPE RECORDER - Sears portable, 2 track, 2 speed. Comes with microphone, reel of tape, and 6 mos. guarantee. P. Lieberman, Ext. 7732.

HOUSE - Smithtown. Six years old, eight rooms, four bedrms., lg. playroom, 2 baths, attached garage, 1/2 acre plot. Carpeting, dishwasher, storms and screens, many other extras included. \$23,500. M. Blume, Ext. 658 or AN 5-7877.

HOUSE - East Islip, opposite Heckscher Park. 7 room split level, 1 1/2 baths, 22 ft. family room, 18 ft. modern kitchen, finished basement and laundry room, large patio, fenced

in yard, wall to wall carpeting, storms and screens, 1/3 acre fully landscaped. \$21,000. Ext. 622 or 581-2877 evenings.

HOUSE - Bellport, No. Howell's Pt. Road. Seven rooms, 2 baths, 75x150 plot. \$13,000. AT 6-8281.

HOUSE - No. Brentwood area. Six-rm ranch with 3 bedrms & attached garage. Storms & screens, patio, fenced corner plot 96x100. Asking \$18,000. P. Ettari, Ext. 2407 or BR 3-6436.

WANTED

BICYCLE - Girl's 20 in. in good repair. Ext. 2853 or AT 6-0798.

HOUSE - Unfurnished to rent for visiting scientist from September, 1964 to September 1965. Four bedrooms, located in Bellport, Brookhaven or Shoreham area. Woodwell, Ext. 2853 or AT 6-0798.

STEAMER TRUNK - Large. Dr. Papavasiliou, Ext. 2875.

SUMMER HOUSE - Or cottage wanted to rent by young BNL working couple (physicists) from June 1 to August 31, 1964. Prefer wooded location or within walking distance to water. Ext. 2654 or 941-4927 evenings and weekends.

PLAYPEN - And electric typewriter, reasonably priced. Gail, Ext. 2212.

PARTS - For Indian motorcycle. James Keegan, Ext. 2257 or 878-0953.

FOR RENT

APARTMENT - Unfurnished. Private entrance. 3 rooms and bath, all utilities included at \$95. per month. One months security; located 10 minutes from Lab. YA 4-6325.

LOST

BRIEFCASE - Thin black leather, with no identifying marks. Has retractable handle. Ext. 2864.

CARPPOOLS

DRIVER - Wanted for existing carpool from Babylon-West Islip area, 8:30 to 5:00 p.m. W. Rodgers, Ext. 7782.

DRIVERS - Wanted to join carpool from Brightwaters-West Islip area. B. Manowitz, Ext. 377 or G. Demirjian, Ext. 2328.

DRIVERS - To form carpool from Hempstead area. M. Platt, Ext. 2925.