

the Bulletin Board

VOLUME 17, NUMBER 18

Published by the BNL Office

JANUARY 28, 1964

BROOKHAVEN CENTER

The Brookhaven Center is now serving a variety of entrees for dinner each evening, except Saturday, and the menus are varied from day to day.

Any groups planning to have dinner at the Center are asked to telephone in advance if possible, (by 3 p.m. preferably - Ext. 2453) in order to facilitate the service.

The hours of food service at the Center are:

LUNCHEON CLUB 11:30 a.m. to 2:30 p.m.
DINNERS 5:00 p.m. to 10:00 p.m.
SNACKS 5:00 p.m. to 11:30 p.m.

There is a Suggestion Box near the Bulletin Board in the corridor where users of the Center may place suggestions on the food, service or other aspects of the Center.

The Center is closed on Saturdays during the winter months.

ARMCHAIR ADVENTURERS (Chapter II)

Our first few folk dances of this year have been "stamping" successes - but where are all you people who already know how to dance? At our next session, which will be held on February 3, we'll emphasize the old familiar dances, such as the Gie Gordons, waltzes, etc., without detailed teaching. (Many of these dances are so easy that you'll be able to muddle through even if you've never seen them before.) Then, for those who want to learn the others - and other "others" - we'll have a mostly teaching session two weeks later on February 17.

This revised schedule for the Folk Dance Group will be in effect for the winter and spring months. Once again, it works this way: Regular sessions, will be held only on the first Monday of each month, instead of every Monday as in the past. Dances at these sessions will be taught by Walter Kane & Bob Marr. In addition there will be special evenings of folk dancing on the third Monday of each month taught by Paul Kantor! While dancers on any level are welcome at all dances, the special sessions will be aimed primarily at beginning folk dancers.

All Dances are held at the Recreation Hall, starting at 8:00 p.m. We hate to see people suffer, so wear comfortable shoes on both feet!

UNWANTED TECHNICAL BOOKS AND JOURNALS

An announcement in the BULLETIN BOARD several months ago has resulted in many generous donations by staff members of technical books and journals no longer needed by them. This material is collected and distributed to universities and libraries in the developing countries, notably in the Far and Middle East, the Balkans, and Latin America, by the Engineers and Scientists Committee of the People-to-People Program.

Thanks are due to all those at BNL who have responded to this worthy cause. The work is continuing, and those who missed the first announcement may still wish to participate. In addition to back issues of technical and scientific journals, some staff members may be willing to part with current issues, when they find these do not contain information of direct interest. In such cases, arrangements will be made to forward this current material immediately, thus enhancing its usefulness to the users overseas.

Those wishing to donate suitable technical material, whether current or not, are invited to contact D. Puleston (Ext. 2329) or J. Binington (Ext. 2294), to arrange for collection.

BERA SPECIAL EVENT

THE HARVARD-RADCLIFFE GLEE CLUB
(Featuring Ninety Voices)

Feb. 22 - 8:00 p.m. - Brookhaven Theatre

TICKETS ON SALE SOON

Employee (family member)	\$1.00
Guest	\$1.25
Child (under 18 years)	\$.75

BNL VISITORS

The participants of the current Institute for Nuclear Science and Engineering from Argonne National Laboratory will visit Brookhaven on Friday, January 31.

WITHHOLDING STATEMENTS

Form W-2 withholding tax statements for the year ended December 31, 1963, were mailed to employees home addresses during the week.

BROOKHAVEN DIVERS' CLUB

The first meeting of the 1964 season for the Brookhaven Divers' Club will be held on Monday, February 3, at 8:00 p.m. in the Recreation Building.

After an extended period of inactivity, the club is planning to get back in business. All members are urged to attend this important meeting. Slated for discussion on Monday, are: The upcoming Brookhaven Divers' Scuba Course, scheduled to begin in February; the 64-65 BERA budget; and plans for upcoming club dives.

All members who have club equipment signed out, are urged to bring it to this meeting so that the annual inventory can be completed.

Any persons wishing to join the club, or get information on club activities, are cordially invited to attend this meeting. Remember the date - Monday, Feb. 3.

PERSONNEL SERVICES

Recreation Office - 3 Center Street
Daily 9:00 a.m. - 1:00 p.m.

MICROMET

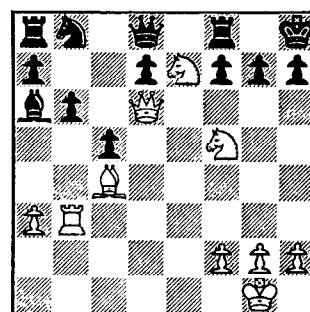
One, three, and eight pound cans of Micromet (chemical crystals designed to aid in the prevention of rusty water) are still available for purchase at the Recreation Office, 3 Center Street.

BULLETIN BOARD NOTICE

For all future BULLETIN BOARD questions, please contact Janet Whitehead or Marianne Clasen at the Personnel Office, Ext. 2109 or 2513.

CHESS PROBLEM

In this week's problem black is ahead in pieces as well as in position but is it enough to win. From this diagram it is white's move. Solution elsewhere in the BULLETIN BOARD.



*Arrivals and Departures***WELCOME TO BNL**

AGS	
Harold Peter	Ext. 2485
MEDICAL	
Judith Edwards	2877
PHYSICS	
Patricia A. Boehm	574
Steven G. Kiss	2677
Eugene A. Tomblor	2677
REACTOR	
Walter Johnson	548

RECENT DEPARTURES

NUCLEAR ENGINEERING	
Richard S. Siegel	
PLANT MAINTENANCE	
Howard Goulding	

UPTON RIFLE AND PISTOL CLUB

Inventory time is here again. All persons having equipment belonging to the club are requested to return it before the next meeting on Thursday, February 6. The award for the large bore shoot will be presented at this meeting.

Both the rifle and the pistol teams are halfway through their respective leagues, and are doing well. The pistol team has won five matches and lost two, and is in second place. The rifle team has won seven and lost three matches, and stands third in their league.

NEXT BERA CONCERT**FINE ARTS QUARTET**

Feb. 18 — 8:30 p.m. — Brookhaven Center

The program will include quartets of Mozart and Beethoven and a concertino of Stravinsky.

CAFETERIA SPECIAL

THURSDAY, JANUARY 30

Small Juice
Celery & Olives
Tossed Salad
Roast Sirloin of Beef
Two Vegetables
Strawberry Shortcake
Beverage
\$.99

STENZLER'S BACK

By popular -repeat-repeat-demand, the best band BNL has ever had, **Herman Stenzler** and his Wayne Foster Orchestra will provide your musical entertainment at our BERA St. Patrick's Dance, on Friday, March 13.

Remember the date!

FOR THE SQUARE DANCE - TAKE A RIGHT

After you've gone through the main gate, take a right, go down two blocks and take another right at York Lane. The big white building at the end of the road is the Recreation Building — that's where the **Square Dance** is going to be held on **February 5, at 8:30 p.m.** How much? That's the best part — **there's no admission charge** — it's free! You see, they've got this foursome called the "FEARSOME FOURSOME" who enjoy playing as much as we enjoy dancing, so they do it for free.

You don't have to bring your own refreshments — you can buy them there: Beer, soda, chip's and pretzels.

See you there next Wednesday!

FOLK SINGING

We're back in business after the usual holiday slump. Lessons are being given on each Tuesday night from 7:30 to 8:30 p.m. and general singing-group and individual, is the rule from 8:30 p.m. on. Bring your guitar, banjo, recorder, or viola d'amour, to the Recreation Building in the Apartment Area. For further information call J. Oosting, Ext. 2543 or J. Powell, Ext. 7789.

SOLUTION TO CHESS PROBLEM

White wins after:

1. Q-N6 e.g. 1. PxQ
 2. NxP check followed by
 3. R-R3 check or blacks
1. R-N1
2. QxR check etc.

SQUARE DANCE

WEDNESDAY, FEBRUARY 5

Recreation Building - 8:00 p.m.

FREE ADMISSION — FREE ADMISSION

JULY 25

SWIM CLASSES BEGIN

The Junior Life Saving Course will begin at the Pool on Monday, February 3, at 6:00 p.m.

The first of the Adult Corrective Swimming Classes is slated for Wednesday, February 5, at 6:00 p.m., in the Pool.

COOKING EXCHANGE GROUP

The next meeting of the Cooking Exchange Group will be held on Thursday, January 30, at 3:00 p.m. in the Recreation Building. Baby sitting will be provided at a fee of fifty cents per mother. All those who are interested are welcome.

BULLETIN BOARD NOTICE

For all future BULLETIN BOARD questions, please contact Janet Whitehead or Marianne Clasen at the Personnel Office, Ext. 2109 or 2513.

CLASSIFIED ADS

FOR SALE

1959 ENGLISH FORD - Consul, 4-dr. sedan. Owner left country. \$345. C. Raseman, Ext. 348 or 941-4078 after 6 p.m.

1962 TRIUMPH - 10,000 orig. miles. R&h, wire wheels, 2 new snow tires, excell. cond. 281-7406 after 5 p.m.

1961 OLDSMOBILE - Convertible 88. Auto. trans., power steering & brakes, r&h, excell. cond. \$1800. Bruce, Ext. 2376.

1955 PLYMOUTH - Good battery, r&h, std. trans., good tires, mechanically good, body needs work. Ext. 563.

1954 CHEVROLET - Bel Aire, 2-dr., good tires, powerglide. Best offer, Scott, Ext. 4389.

1963 AUSTIN HEALEY - Sprite. Black w/red interior, in new cond. white walls, heater. \$1495. Bolster, AT 9-0243 or Ext. 2504.

1956 CHEVROLET - Station wagon. 4 new tires. \$175. EM 3-6538.

1951 CHEVROLET - Sedan. Mech. sound, excellent second car. Many recent parts. Ext. 2692, J. Raynor.

1953 CHRYSLER - New Yorker. 4-dr., damaged in collision, has 4 first quality Atlas tires used less than 2500 miles, and new muffler. Will sell all or part. N. Kelly, Ext. 2343.

1960 AUSTIN HEALEY - Sprite. Lt. Blue, white top, r&h, good tires, and gas mileage. R. Roberts, Ext. 2137 or HR 3-1707.

1950 PLYMOUTH - 4-dr. sedan. R&h, stand. trans., body excellent, reliable trans. \$75. P. Klevin, Ext. 2745.

1962 VOLKSWAGEN - Undercoating, r&h, white walls, \$1250. Ext. 576.

1958 KARMAN GHIA - Black coupe, white walls, booster motor and supplementary heater. 40 mpg. Excell. driving cond. Ext. 367.

SPECIAL \$1.00 SALE - 1951 Olds, 4-dr., r&h, \$99. 1949 Plymouth, 4-dr., \$1.00 with purchase of Olds. Ext. 2196. Both run.

HOUSE - No. Brentwood area. 6 room ranch with 3 bedrooms and attached garage. Storms and screens, patio, fenced corner plot 96x100. Asking \$18,000. P. Ettari, Ext. 2407 or BR 3-6436.

HOUSE - Bellport, No. Howell's Pt. Road. Seven rooms, 2 baths, 75x150 plot. \$13,000. AT 6-8281.

HOUSE - New 5 room ranch with attached garage, base-board heat, full basement, wall oven, RCA refrigerator. Large front and back-yard. One block from Sunrise Highway in Patchogue. Avail. March 1. Will also rent or sublet. Ext. 2940 or GR 5-8437.

HOUSE - East Islip, opposite Heckscher Park. 7 room split level, 1½ baths, 22 ft. family rm., 18 ft. modern kitchen, finished basement and laundry room, large patio, fenced in yard, wall to wall carpeting, storms and screens, ½ acre fully landscaped \$21,000. Ext. 622 or 581-2877 after 5 p.m.

U.S. COINS - Large Cents, Indian Heads, various other coins. Willing to sell lot for sacrifice. Ext. 2495 or 281-7245 after 6 p.m.

COFFEE TABLE - Round, blonde wood. \$8. Green velvet gown, worn once, \$8. Muskrat coat, \$10. Large headboard for twin beds, like new, \$40. AT 9-1754.

END TABLES - 2, blonde wood, magazine shelf. Cocktail table, blonde. \$5. All good condition. Ext. 360.

WASHING MACHINE - Westinghouse laundromat. Good cond. \$10. H. Spiess, Ext. 2972.

TV - Magnavox 21 in. console. M. Rothbart, Ext. 2718 or 2830.

POOL TABLE - 4x8 ft. All accessories. Recently purchased, brand new. Big table - small rm. \$300. GR 5-2998.

TV - GE console 17 in. Good cond. \$20. All tubes including 10 spares. Test OK. Washing machine, Sears wringer-type. Good cond. \$15. Ext. 2242 between 9 and 10 a.m.

PERSIAN LAMB COAT - Black and gray, and mink cape, size 18-20. Perfect cond. Also, small, perfect diamond ring and gold brooch; large topaz with rubies, and diamonds. SH 4-3208.

FURNACE - Gas fired 125,000 btu forced air, and 40 gal. hot water heater, in very good cond. Asking \$75. for both. B. McRickard, Ext. 2165.

WHEEL RIMS - 15 in. Ford rims, both for \$7. Good cond. Bekuhrs, Ext. 2369.

FURNITURE - Slatted coffee table, \$5. Starburst chandelier, \$15. Mauve couch, \$50. Kitchen set, 40 in. diameter, with 4 chairs and 3 leaves. Walnut finish. AN 5-1631.

PORTABLE STEREO - HiFi phonograph, Webcor, model 1253, one year old, with new diamond needle. \$40. N. Ohta, Ext. 2479.

OSCILLATOR - Grid-dip, complete with all coils. New, \$20. Phil Warner, Ext. 698 or RA 8-0273 evenings.

AIR UNIT - Vornado 1½ ton, refrigerated. \$25. S.C. Jones, Ext. 2526.

REFRIGERATOR - Hot Point, 13 cu. ft., in good cond. Call GR 5-0037 anytime.

ELECTRIC RANGE - Hotpoint 40 in., 3 top heating elements and deepwell, plus oven. Push-button controls on back panel. 3-110 volt outlets, clock and timer. S.C. Jones, Ext. 2526.

SAILBOAT - 23 ft. Viking, double ender, centerboard sloop. 12 h.p. outboard, sleeps four, galley, head, completely equipped. Call AT 6-0651.

ALUMINUM DOOR - Storm and screen combo. with frame, 24 in. in excell. cond. \$20. GR 5-2629.

BABY BATHINETTE - In good cond. \$8. Also, play pen with pad. \$5. Baby carriage, Bilt Rite, lift out body, folding frame, like new. GR 5-2629.

MISC. BABY ITEMS - In good cond., best offer takes all or any. Bassinet, training chair, bouncer chair, sterilizer, Cosco Infant Seat. C. Brunke, Ext. 2700.

TRACTOR - Garden, National walking model, 4.3 hp, 36 in. sickle bar, disc. harrow, garden plow, cultivator, and snow plow. JU 4-5919 after 6:45 p.m.

WIRE WHEEL - One. Will fit MG, TR-3, Austin Healey, etc. No reasonable offer refused. B. Beard, Ext. 2445.

BICYCLES - Boy's 26 in. with balloon tires. \$15. Also, girl's bike, same description and size. AT 6-0652.

SHALLOW WELL - Piston pump w/mtr. \$25. Wood/coal stove, for shop. \$20. Saw filing machine/mtr. \$180. AT 6-0652.

PROTO SOCKET SET - ¾ in. drive. Proto combo. wrench set ⅜ in. through ¾ in. Williams long box-end wrenches, ½ in. through ¾ in. Misc. wrenches, all in very good cond. Metal box incl. \$15. Ext. 2179, Bobbie.

RIMS - Two 7.10x15 rims with tubes and tires. Good for a trailer. \$5. A. Rosenka, Ext. 445.

SPACE HEATERS - One single burner, just the thing to heat your boat, tool shed, cellar, etc. \$7. One double burner, ideal for small cottage, rec. room, etc. \$16. Rosenka, Ext. 445.

TYPEWRITER - Portable, Smith Corona, excell. cond. Gail, Ext. 2212.

FOR RENT

APARTMENT - Furnished. 3 rms. Ten minutes from Lab. 281-7666.

APARTMENT - Unfurnished. Private entrance. Located in residential area. 5 rooms & bath, heat & hotwater included at \$105. per mo. Avail. April 1. AT 9-1339.

APARTMENT - Unfurnished. 3½ room garden apartment. Patchogue. Occupancy February, 1964, sublet until June 30, 1964; thereafter new lease. Will bargain for rent. Pat, Ext. 2273 or after 7 p.m. GR 5-7847.

FOUND

PIPE - Black and white.

GLOVES - Men's black leather, at Gym.

GLOVE - Man's black leather left hand, at Gym.

SCARF - Green and red plaid, outside Post Office.

KEY - Gold key with initial "M", in 460.

HUB CAP - One T-Bird.

Personnel Services, 3 Center Street

CARPOOLS

DRIVER - Wanted for existing carpool from Babylon-West Islip area, 8:30 to 5:00 p.m. W. Rodgers, Ext. 7782.

RIDE - Needed from Lakeview Ave. on Montauk Highway in Bayport to Lab. 8:30 to 5 p.m. P. Dubick, Ext. 2342.

DRIVERS - To form or join carpool from North of Floyd Bennett Store & Sunrise Highway, Patchogue. 8:30 - 5 p.m. B. Johnson, Ext. 560.

DRIVERS - To form carpool from Hempstead area. M. Platt, Ext. 2925.

DRIVERS - Wanted to join existing 2 man carpool from Lake Ronkonkoma area. Sunnyside development. 8:30 to 5:00 p.m. M. Mooney, Ext. 2380 or W. Spiers, Ext. 2389.

RIDER - Would like to join carpool from Morewood Dr., Smithtown/Commack area. E. King, Ext. 2547.

WANTED

1954 CHEVROLET - 2 dr. station wagon. Tires unimportant. Standard or auto. shift. Cheap. E. Kiefer, Ext. 2692.

HUNTING DECOYS - Wooden duck. Will buy or trade cork decoys for them. AT 6-8610 after 4:30 p.m.

HOME - For Doberman Pincher dog. 5 years old, male. A.K.C. registered. GR 5-1232.

GAS STOVE - 20 in. Bottled gas, good working condition. Ext. 423.

MIMEOGRAPH - Machine. Good cond. Ext. 360.

BICYCLE - Girl's 20 in. in good repair. Ext. 2853 or AT 6-0798.