

# the Bulletin Board

VOLUME 17, NUMBER 20

Published by the BNL Personnel Office

FEBRUARY 11, 1964

## LARGE RADIATION SOURCE ARRIVES AT BNL

A 215,000-curie source of cesium-137 arrived at Brookhaven last Monday to be installed in the recently completed High Intensity Radiation Development Laboratory (HIRDL). The source was prepared at Oak Ridge National Laboratory and was shipped by truck from there on January 31.

During shipment, the sources were contained in two heavily shielded casks weighing a total of 23,000 pounds.

At Brookhaven, this cesium will become part of the several million curies of radiation sources at HIRDL, which has been designed to: 1) obtain engineering data on a variety of gamma radiation sources in the million-curie range; 2) develop more efficient techniques for handling large-scale radiation sources; and 3) train scientists and engineers in the uses of such radiation sources for research purposes, and ultimately for industrial applications. This information is essential for the design of future irradiation facilities which would be useful in a wide variety of applications of radiation energy. Those currently under development include the production of plastics and chemicals, cold sterilization of drugs and medical supplies, and pasteurization of perishable foods.

HIRDL is part of the AEC's Radiation Development Center, but will also be available on a limited basis to visiting scientists interested in the various applications of radiation technology.

## THIRTY-THIRD BROOKHAVEN LECTURE

By: DR. JAMES S. ROBERTSON  
Medical Department

Title:

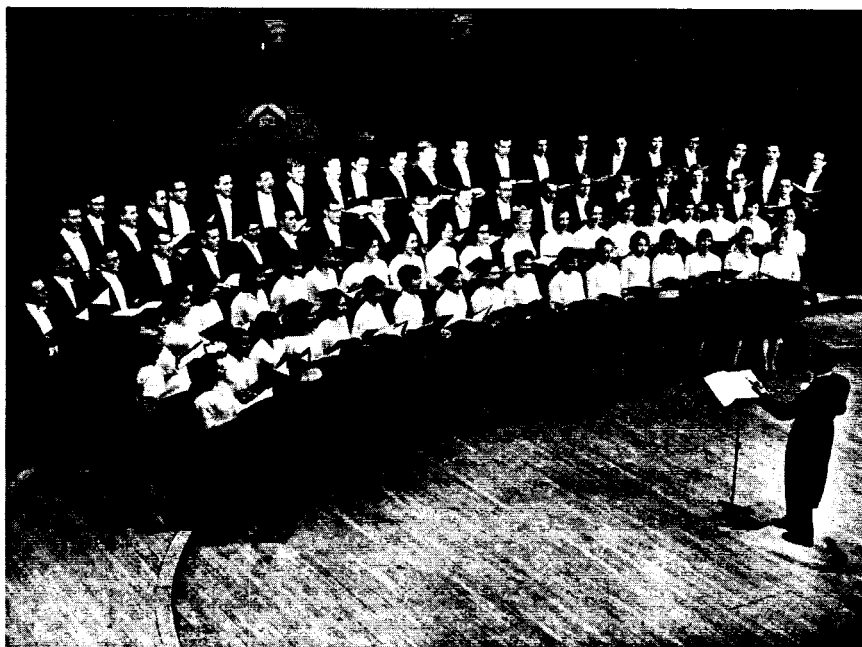
"The Impact of Radioactive Tracers on Physiological Concepts"

Lecture Hall — Wed., Feb. 12 — 8:00 p.m.

A buffet supper (\$2.75) will be served at the Brookhaven Center before the lecture, beginning at 6:00 p.m. Reservations should be made at least one day in advance by calling Ext. 2302 before 5:00 p.m. or Ext. 2453 in the evenings.

Refreshments will be available in the Exhibit Hall lobby following the lecture.

## BERA PRESENTS THE HARVARD GLEE CLUB AND THE RADCLIFFE CHORAL SOCIETY



Saturday, February 22

8:30 p.m.

The Theater

BUY YOUR TICKETS IN ADVANCE FROM TICKET SELLERS LISTED BELOW:

JOAN KREITZBERG, Reactor....Ext. 7798	HELEN JEFFERSON, Director's..Ext. 2265
BEATRICE KOHLER, Personnel.....2102	PAT TOWEY, Physics.....602
ISSAC COLE, Physics.....424	BARBARA KECK, Cosmotron.....7752
ALICE WAGNER, Medical.....310-16	GERTRUDE NEUHOFF, Nuc. Eng....2739
<b>Adults (Family), \$1.00</b>	<b>Children (Under 18 years), \$.75</b>
	<b>Guests \$1.25</b>

## CAMERA CLUB

The Brookhaven Camera Club will meet on Thursday, February 13, at 8:00 p.m. in the Recreation Hall. A model will be on hand for a "shooting session" emphasizing light and portrait techniques. Details will be given concerning the North Shore Hospital Photo Contest to be held in March. All BNL employees are invited to attend the meeting.

## EMERGENCY CLOSING INFORMATION

Information on emergency closings of the Laboratory will be broadcast from radio station WLNG, AM 1600, located at Sag Harbor, as well as from WBAB, WPAC, WRIV, WALK, WGSM, and WHLI.

## FINE ARTS QUARTET

BERA will present the Fine Arts Quartet on Tuesday, February 18, at 8:30 p.m. in the Brookhaven Center.

### PROGRAM

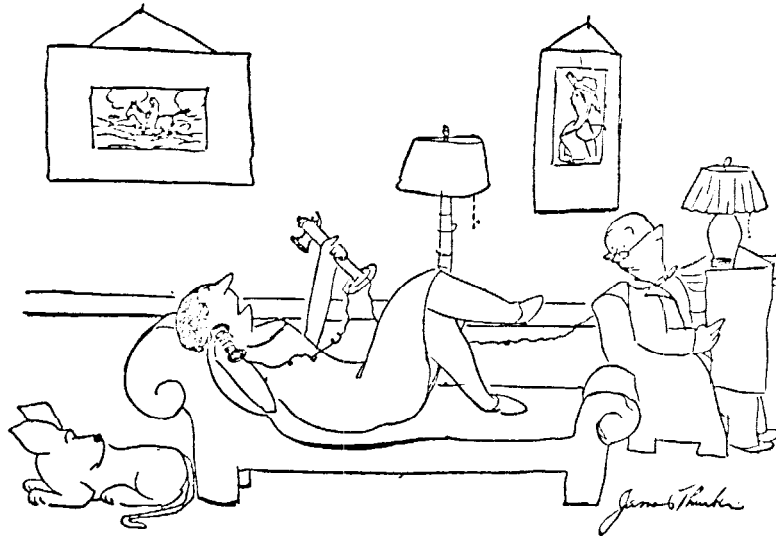
Quartet in E flat major, K. 428.....MOZART  
Concertino for String Quartet.....STRAVINSKY  
Quartet in A minor, Opus 132.....BEETHOVEN

## CAFETERIA SPECIAL

THURSDAY, FEBRUARY 13

Small Juice  
**Roast Turkey with Dressing**  
Peas  
Marshmallow Sweet Potatoes  
Blueberry Pie  
Beverage  
**\$.99**

**THE BNL THEATER GROUP  
PRESENTS  
"A THURBER CARNIVAL"  
By JAMES THURBER**



"Well, if I Called the Wrong Number, Why Did You Answer the Phone?"

**Thursday, Friday, & Saturday, February 27, 28, & 29      The Theater, 8:30 p.m.**

James Thurber was a great American humorist and comic artist who bequeathed us hundreds of enduring words and pictures. Many of them are among the funniest any writer or artist has ever produced, and the play, "A Thurber Carnival," is regarded as a fine example of the Thurber wit.

"A Thurber Carnival" is a collection of sketches woven together with music. Specific rhythms are attuned to each sketch, and the music subtly reflects changes of story pace and mood through transitions from comedy to military to madrigal-like as it accompanies the themes.

For a completely Thurberesque evening of words and music with a carnival-like setting, be sure to include the BNL production of "A Thurber Carnival" on your list of "musts!"

**Adults (Family), \$1.00      Children (Under 18 years), \$.50      Guests, \$1.25**

**SKIN DIVING CLASS**

The Brookhaven Divers' Club again plans to give its course in basic skin and scuba diving at the pool. By popular demand, the Club has decided to run the eight-week course, starting March 2.

The class is open to all BNL employees and members of their immediate families who are over sixteen years of age. Each session will be held on Monday night from 7:30 to 9:30 p.m. at the pool. Cost for the entire eight-week series will be \$8.00, which includes admission to the pool.

All employees and family members who are interested in taking the course or obtaining further information about it, are urged to attend the class orientation meeting to be held February 24 at the Recreation Building on York Lane.

Watch for further information in next week's BULLETIN BOARD.

**SOLUTION TO CHESS**

White wins a Rook at least, by BxB. If the Black Queen takes the Bishop, White would mate by, 2. Rook takes Pawn, etc., etc.

**FENCING CLUB**

MEETS AT THE GYMNASIUM  
TUESDAY EVENINGS, 5:00 P.M.  
New Members Welcome

**PERSONNEL SERVICES**

Recreation Office - 3 Center Street  
Daily 9:00 a.m. - 1:00 p.m.

**MICROMET**

We still have a small supply of Micro-met and Micromet Feeders available.

**BERA BASKETBALL LEAGUE**

The date was February 4. The schedule was: 7:00 p.m., AMD versus Blue Jays; 8:10 p.m., Biology versus Physics. The standings of the four teams were: 7-0, 5-2, 3-4, and 6-1.

Ever since AMD had knocked off an undermanned Physics team in the first week of the season, they had been tabbed as the League's Cinderella team. As each week had come and gone, they had squeaked past another team. Now Physics was in stride and sailing through the League, and the Blue Jays, with only a forfeit to their discredit, were right behind them. The two teams met. Physics maintained their momentum with a close win and calmly marked time waiting for the inevitable meeting between the Jays and the upstarts from AMD.

The Blue Jays showed up with only five men. Kaplan, AMD's leader, decided to throw up a press, expecting to either wear the Jays down or induce floor mistakes. The move paid off and the Jays gave up the ball without a shot fifty per cent of the time. This, coupled with the surprising board work and hot hands of AMD, gave the latter team leads of 5-1, 16-6, and, at half-time, 27-12.

Forced into bringing the ball up, the Jays' Haller left his corner spot and was immediately set upon by two and three men at a time. Again, Kaplan's move paid off because the free Jays failed to make their shots. The 15 point spread never changed and AMD had a first leg on the championship cup.

Haller and Stohr, with 14 and 10 respectively, amassed nearly all the Jay points, while Reeder poured in 19 for AMD.

Surprises didn't end with the first game. Biology caught the spirit of the night and stole the spotlight with a deserved 32-31 victory over Physics. Capitalizing on poor shooting by Physics, and playing their usual ball control game, Bio had a 20-10 half-time lead. They scrapped to stay in front in the second half, and - with twenty seconds to go - had a 32-26 lead. Physics caught fire with two hoops, a foul shot and three steals in a matter of fourteen seconds. But their last two shots failed to find the mark, and time ran out.

**FINAL FIRST-HALF STANDINGS**

Applied Math	8-0
Physics	6-2
Old Timers	6-2
Blue Jays	5-3
Biology	4-4
Runners' Up	4-4
Nuclear Eng'g	2-6
Health Physics	1-7
Chamber Chaps	0-8

*Arrivals and Departures*

**WELCOME TO BNL**

AGS		
Harold A. Martin	Ext. 2504	
John Mitchell	2416	
Robert M. Stelmack	2456	
MECHANICAL ENGINEERING		
Vincent Troisi, Jr.	2557	
NUCLEAR ENGINEERING		
Bernard C. Quiquemelle	439	
PHYSICS		
H. Garton Lewis, Jr.	2677	
Blanche B. Lowe	2245	
PLANT MAINTENANCE		
Stanley C. Rhodes	2120	

**RECENT DEPARTURES**

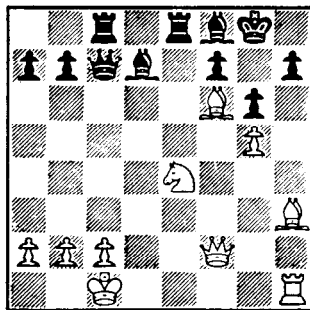
PHYSICS  
Raymond J. Bacanskas

**BNL VISITORS**

On Wednesday afternoon, a group of school administrators from Hicksville will tour the Laboratory.

**CHESS PROBLEM**

In this week's chess problem, it is White's move and win. Answer elsewhere in the BULLETIN BOARD.



**CLASSIFIED ADS**

**FOR SALE**

1951 PLYMOUTH - 4 dr. sedan. Heater, stand. trans., good mechanical cond. Dependable second car. Must sell, best offer. Ext. 2717 or 2770 after 5:30 p.m. C. Cannistrati.

1960 AUSTIN HEALEY - Sprite. Lt. blue & white. R&h, good gas mileage. \$650. R. Roberts, Ext. 2137 or HR 3-1707.

1962 OLDSMOBILE - F-85 Cutlass. Excellent cond. Auto trans., power steering, r&h, \$1850. W.L. Homer, Ext. 2260 or GR 5-4597.

1960 MGA - White with black interior. W/w's, wire wheels, seat belts, adjustable steering. Clean car, under 30,000 miles. \$1175. R. Meyer, Ext. 481 or LT 9-5757.

1956 CHEVROLET - Station wagon; 4 new tires. \$150. EM 3-6538.

1964 VALIANT - Cygnet. Fully equipped, perfect cond. Stork forces sale. \$2300. Ext. 462.

1957 MERCURY - Late model. Power brakes and steering. Excellent motor and body, with four new tires. \$495. Must sell. AN 5-7492 after 6 p.m.

1955 PLYMOUTH - Sedan. R&h, good running condition. \$50. Ext. 563.

1960 FALCON - Deluxe 4 dr. sedan. R&h, std. trans. \$600. Ext. 2430.

1959 ENGLISH FORD - Consul, 4-dr. sedan. Owner left country. \$345. C. Roseman, Ext. 348 or 941-4078 after 6 p.m.

1961 OLDS - Conv. 88. Auto. trans., power steering and brakes, r&h, excell. cond. \$1800. Will consider older car in trade. Bruce, Ext. 2137.

1957 CHEVROLET - Convertible. Red with white top. V-8, auto. trans. Dotti, Ext. 301-14 or AN 5-2097.

1959 RAMBLER - American. 6 cyl., automatic, r&h, 46,000 miles. Perfect cond. Ext. 2925 or IV 1-2843 after 7 p.m.

1955 PLYMOUTH - Sedan. Good mech. cond. New battery, good tires (2 new). \$110. Ext. 388.

1957 DODGE - 2 dr. sedan. Runs like a top. 5 near new, and 2 snow tires. Low mileage, r&h, power steering and brakes. Asking \$450. P. Lieberman, Ext. 7732.

1957 FORD - 4-dr. sedan. Auto. trans., good tires, asking \$295. SE 2-4147 after 5 p.m.

1960 MERCURY - Station wagon, 9 passenger. Fully equipped, and in excell. cond. \$1200. SE 2-4147 after 5 p.m.

1952 NASH - 2 dr. sedan. New snow tires, \$100. Ext. 2472 or 2715.

1962 VOLKSWAGEN - Undercoating, radio, w/w's, \$1150. Ext. 576.

HOUSE - Brookhaven. Colonial ranch, fireplace, 7 rooms, 1 1/2 car, attached garage. Fully landscaped and fenced 125x150 ft. lot. AT 6-0270.

HOUSE - Mastic Beach. 3 1/2 rooms, 80x100 ft. plot, 1 1/2 car garage. Good cond.; 3 blocks from bay. \$5000. 281-9033.

HOUSE - East Islip, opposite Heckscher Park. 8 room split level, 1 1/2 baths, 22 ft. family rm., 18 ft. modern kitchen, finished basement and laundry room, large patio, fenced in yard, wall to wall carpeting, storms and screens, 1/2 acre fully landscaped \$20,000. Ext. 622 or 581-2877 after 5 p.m.

HOUSE - Sacrifice. Newly decorated 5 1/2 rooms; 2 bedrooms. Garage, elec. stove, oil burner, cabinets, walk-in-pantry. 60x140 lot. Two blocks from center of Patchogue Village. GR 5-2829 after 6 p.m.

HOUSE - No. Brentwood area. Six room ranch, with attached garage. Storms and screens, two patios, gas fired hot water heat, fenced corner lot 96x100 ft. 1/4 mile fro L.I. Expressway exit. \$17,500. P. Ettari, Ext. 2407 or BR 3-6436.

1960 CHRIS CRAFT - 18 ft., 95 hp, Navy top, side curtains, fully equipped. Good cond. GR 5-0002 after 6 p.m.

1959 RUNABOUT - 16 ft. M.F.G. Windshield, steering wheel, electric controls, extras. Has 35 hp, electric starting Evinrude. \$395. Ext. 2511 or 281-7344.

OSCILLOSCOPE - Heath 5 in., model O-8. \$20. Petruk, Ext. 2142.

CONVERTER - Gonset, Super 12. \$40. B. Busch, Ext. 2152.

GO CART - Nassau model. Two mc6 engines, bored 80m. Special manifolds, 12 gears. Extra tires, etc. \$175. PA 7-2163 evenings.

SWING SET - Outgrown. Approx. 6 ft. high. 2 swings, and one teeter-totter. Hull, Ext. 595 or SH 4-5969.

TV - Table model RCA, 21 in. \$55. Wagner, AT 6-1357 anytime.

ELECTRIC RANGE - Hotpoint, 40 in. front, 3 top heating elements, deep well, oven, back panel controls, clock. Outlets, fluorescent lamp. S.C. Jones, Ext. 2526 or HR 3-4432.

MISC. FURNISHINGS - Maple dresser and mirror, with matching chest. \$50. Bleached mahogany full size bed - no bedding. \$20. Light wood, large size desk. \$25. Very good cond. 301-39 or AT 6-0630 after 5:30 p.m.

CB TRANSCEIVER - USL, with 4 transmit crystals. In excell. operating cond. \$45. W. Kalinowski, Ext. 2457 or AT 6-0246 after 5:30 p.m.

MEN'S SHIRTS - White, dacron and cotton, size 16 1/2-33. Washed, but never worn - wrong size. All three for \$15. Anne, Ext. 388.

AUTO PARTS - 4 barrel carb and a manifold and air cleaner for 283 cu. in. 1958-59 or 60 Chevrolet. Reasonable offer. G. Schmidt, Ext. 2972.

PIANO - And bench. Lester Spinet, mahogany. Has rounded keys, damp chaser. Like new, cost \$825. Ext. 2131 or SE 2-3919.

SHOT GUN - J.C. Higgins 20 ga. bolt action. Adjustable choke, fired under 100 rounds. With case, \$15. Hank, Ext. 454.

WOODEN STORM WINDOWS - And screens. Double thick glass, and bronze screening. Many assorted sizes, including picture window. They've been replaced by aluminum units. Ext. 2811.

TAPE RECORDER - Small Sears portable, 2-sp., 2 track. Comes with mike, reel of tape and 6 mos. guarantee. \$65. P. Lieberman, Ext. 7732.

RIFLE - Springfield 1903-A3 30/.06. Sporterized stock w/recoil pad & hood front sight. \$40. Also, bullet swaging set, C-H, .38 cal. w.c. New, will not fit my loading press. \$12.50. B. Buhl, Ext. 354.

ANTIQUA SPINNING WHEEL - \$50. G.E. TV, table model. \$25. AT 6-0652.

JIG SAW - And bench saw. \$30. Also, cupolas, various sizes. \$25. to \$50. AT 6-0652.

GRILL - For sandwiches, etc. Westinghouse in good cond. \$5.00 or best offer. B. Keck, Ext. 7752.

TRACTOR - John Deere Model B. \$250. YA 4-6374.

ANTIQUA RIFLE - 1870 Oberdorff Prussian army rifle. Good, clean cond. Will sacrifice for \$20. W. Kalinowski, Ext. 2457.

RUBBER STAMP MACHINE - Warner electric model. Has two sets of type and all accessories. Machine used twice. Will sacrifice. \$110. EM 3-6379.

MISC. FURNISHINGS - Chrome kitchen table with formica top, and 4 chairs. Excell. cond. Twin bed and night tables. Child's desk - roll top, excell. cond. GR 5-8128.

FIREPLACE SCREEN - Free standing, flat black finish. Hull, Ext. 595 or SH 4-5969.

FURNITURE - Three piece modern living room set. Two chairs and couch with slip covers. Very good cond. \$95. R. Meyer, Ext. 481 or LT 9-5757.

AUTO PARTS - For 1953 Plymouth - radio. 2 distrs., 1 carb., 1 gen., 1 fuel pump, 1 volt reg. \$15. takes all. Ext. 440, Harold.

REMNANTS - Of a five string banjo (neck and head). Make offer, Bruce, Ext. 2348 or 2278.

SAWS - Table and band, equipped with motors, \$80. for both, or best offer. Ext. 2152, Phil Foster.

CAMERA - Polaroid Land Model 80. Comp. with flash, leather carrying case, and arm strap. Seldom used. Cost \$110., will sell for \$50. R. Dietz, Ext. 624.

TYPEWRITER - IBM electric. 4 special keys. Types up to 10 carbons; orig. cost, \$150., will sell for \$90. R. Dietz, Ext. 624.

SCOPE - Eico No. 430. New, \$65. D. Fackre, Ext. 2324.

FURNITURE - Three piece modern living room set - 2 chairs, couch with new covers. Very good cond. \$105. R. Meyer, Ext. 481 or LT 9-5757.

BEAGLE - Three month old AKC registered male. \$35. D. Clark, Ext. 439.

STEAMER TRUNKS - Two, wardrobe type. \$18. each or both for \$30. Also, 2 suitcases, 31 and 27 in. American Tourister, blue. \$15. each. Fischer, Ext. 2373 or AT 9-0646.

TABLE - Dining room, 2 leaves, 4 chairs. \$20. Also, 2 corner tables, \$10. 281-7665 after 5 p.m.

TV - GE console, 20 in. \$45. Also, auxiliary 2 burner kerosene heater, output 20,000 btu's per hour. \$15. G. Lilja, Ext. 657 or JU 8-2328 after 6 p.m.

CLEARANCE SALE - 6 volt car battery, used 2 weeks, \$4.50. Sears 12 volt transistor manual car radio with antenna, very good cond. \$30. 12 volt elec. car clock, 3 in. diam., very good cond. \$5. Fender mirror, \$1.50. Roy's Hock Shop, Ext. 580.

#### FOR RENT

APARTMENT - Unfurnished, in Bayshore area. 3½ rooms, \$100. mo. MO 6-6327 after 5 p.m. or Ext. 2662.

APARTMENT - Unfurnished. Private entrance, located in residential area. 5 rooms & bath. Heat and hot water incl. at \$105. mo. Avail. April 1. AT 9-1339.

APARTMENT - Furnished, 3 rooms, 10 minutes from Lab. 281-7666.

APARTMENT - East Patchogue; private entrance, 3 rooms. AT 6-9524.

HOUSE - So. Bellport. 4 bedrooms, 1½ baths. Beautifully furnished. Available now until July 1, 1964. \$150. mo. AT 6-0925.

APARTMENT - Newly decorated, unfurnished. Has spacious grounds in Wading River, 8 mi. from Lab. Modern kitchen and bath, fireplace, plenty of closet space, bright rooms, garage and beach rights. \$140. mo. including all utilities. J. Nardi, Ext. 2326.

#### WANTED

DWYER UNIT - Complete with oven. Ext. 2389 or 2159.

OUTBOARD MOTOR - Evinrude or Johnson 5 - 7½ hp. JU 1-0565.

HIGH CHAIR - Or small table-chair combination. G. Liacer, Ext. 618.

PIANO ROLLS - Old, for player piano. F. Mignone, 281-9504.

#### LOST AND FOUND

WALLET - Man's brown leather, lost in locker at the Gym on February 4. A. Bono, Ext. 686.

GLOVES - Lady's green wool, ¾ length. Found Personnel Services, 3 Center Street

#### CARPOLS

DRIVERS - Wanted to join existing carpool from Deer Park. M. Manni, Ext. 7782.

RIDE - Needed desperately from Lakeview Ave., Montauk Highway, Bayport. P. Dubick, Ext. 2342.

DRIVER - Would like to join carpool from S. Huntington area. Ken, Ext. 2215.

DRIVER - Wanted for carpool from N. Heather wood development, Port Jefferson H.S. area S.C. Jones, Ext. 2526.

DRIVER - Would like to join carpool from Miller Place area. N. Kreiser, Ext. 2375.

DRIVER - Wanted for existing carpool from Babylon-West Islip area, 8:30 to 5:00 p.m. W. Rodgers, Ext. 7782.

DRIVER - Wanted from West Islip area. J.E. Curran, Ext. 2335.