

the Bulletin Board

VOLUME 17, NUMBER 28

Published by the BNL Personnel Office

APRIL 7, 1964

THIRTY-FIFTH BROOKHAVEN LECTURE

By: **Dr. Ernst W. Caspari**

Trustee of Associated Universities, Inc.
from the University of Rochester
(Department of Biology)

Title:

"The Problem of Development"

Lecture Hall — Wed., April 15 — 8:00 p.m.

A buffet supper (\$2.75) will be served at the Brookhaven Center before the lecture, beginning at 6:00 p.m. Reservations should be made at least one day in advance by calling Ext. 2302 before 5:00 p.m. or Ext. 2453 in the evenings.

Refreshments will be available in the Exhibit Hall lobby following the lecture.

RIFLE AND PISTOL CLUB

After losing to Pan American Airways 740 to 724, the Upton Rifle Club met Reeves Instrument the following night and defeated them by a score of 725-711. Top scorers for the evening were P. Colombo, 184; A. Lukas, 183; R. Domish, 182; and P. Colsman, 176.

The Club has now won eleven matches and lost eight in the eleven-team L.I. Industrial League. Plans are being made to enter a second team in next season's League shooting. Anyone interested in actively participating in .22 calibre rifle gallery competition should get in touch with P. Colombo, Ext. 624.

The spring rifle tournament started in perfect shooting weather last Sunday at the north tract range. It is still not too late to join, since only the highest four scores of each shooter will be counted. Weather permitting, the schedule will be as follows:

April 12	2:00 p.m.
April 19	11:00 a.m.
April 26	2:00 p.m.
May 3	2:00 p.m.
May 10	None
May 17	2:00 p.m.
May 24	2:00 p.m.

If bad weather interferes with this schedule, a final match will be held on May 31 at a time to be announced later.

FENCING CLUB

MEETS AT THE GYMNASIUM
TUESDAY EVENINGS, 5:00 P.M.
New Members Welcome

BOWLING AWARDS NIGHT TO BE HELD MAY 8

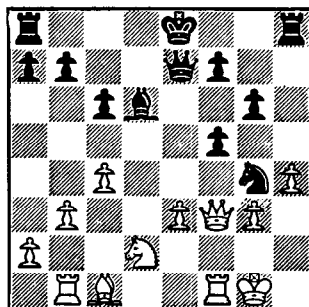
Plans are now being completed for the Bowling Awards and Presentation Party, to be held on May 8 in the Gymnasium. This annual event will wind up the bowling season with a dance and an evening of entertainment.

The Awards Committee has chosen the theme of A NIGHT IN CAMELOT, and the decorations will add to this theme.

The dance is only for those who have bowled in a BNL league this year. Tickets will be issued to team members by their captains, and these tickets are not transferable. Watch the BULLETIN BOARD for further information.

CHESS PROBLEM

In this week's problem, White and Black are even on pieces. Black's position is somewhat better than White's. But Black has not castled yet. From the diagram given, it is Black's move. Solution elsewhere in the BULLETIN BOARD.



A REMINDER

A.S.M.E. MEETING AND TOUR
Friday, April 10, 1964

Tour starts at Brookhaven Center

Tour	6:15 p.m.
Cocktails	7:15
Dinner	7:45
Lecture	8:45

LECTURE:

"Reliability and Maintainability Activities in the Aero Space Sciences."

SPEAKER:

John deS. Coutinho, Director of Reliability for Grumman's Lunar Excursion Module (LEM).

Reservations should be made in advance. Specify meat or fish preference. Dinner cost per person is \$3.50. Telephone B.M. Lomonosoff, Ext. 2488.

PERSONNEL SERVICES

Recreation Office — 3 Center St.

Daily 9:00 a.m. — 1:00 p.m.



UNITED STATES FLAGS

Is your flag out of date? Are you still flying the forty-eight? Through a special group purchase, we have available for sale a 3'x5' U.S. flag with color-fast printed stars and stripes on a 6'x3/4" bright aluminum two-piece pole with halyard, eagle ornament and a metal holder. List \$6.30; our price, \$3.95.

DO-IT-YOURSELF

We have a limited supply of T.V. Troubleshooters' Guide books on sale. This book covers the television, home and car radio and is priced at \$.50.

BRIDGE NOTICE

There will be a duplicate bridge game on Thursday, April 16, at 8:00 p.m. in the Recreation Hall. For further information, contact Les Lawrence, Ext. 2354. All are invited.

The winners of last week's game were: first, Donald Koenig and Joel Malament; second, Sandy Wagner and Les Lawrence tied with Sri Raman and Ajoy Ghatak.

Admission is \$.75 per person.

BULLETIN BOARD NOTICE

For all future BULLETIN BOARD questions, please contact Janet Whitehead or Marianne Clasen at the Personnel Office, Ext. 2109 or 2513.

SCOTCH DOUBLES

Fifty-six teams will compete in the second annual Scotch Doubles Tournament on Saturday, April 11 at the Port Jeff Bowl. The tourney will start promptly at 3:00 p.m. Alleys will be available for open bowling up to 2:30 p.m. only. Please sign up at the desk when you arrive.

FREE ENTRY. Several teams guessed that our total number of entries would be fifty-six. Prior to the tournament, an announcement at the lanes will be made disclosing the lucky pair that guessed the correct number **first!**

BERA BASKETBALL LEAGUE

Going down the stretch for second-half honors, Applied Math has been bumped to outside a couple of times. Out in front and on the rail are the Old Timers (7-0), with Physics (5-1) only a length behind. Bunched together vying for third place are runners-up Blue Jays and A.M.D.

The OT's, under Pontieri's firm hand, have shrugged off their early season's tensions and are working on a long winning streak. During this streak, the veterans showed their class: one win came in overtime and two others were gained by a total of three points. The OT's have a free lance offense which keeps pressure continually on the defense – even more so since all five starters have been in double figures during the season. That the team can adjust its defense from a normal zone to a tight man-to-man was dramatically demonstrated in their overtime win vs. A.M.D. With a quarter of the game gone, down by 12 points with the gap ever-widening, Pontieri called for time, switched defenses, and thoroughly out-played the first-half champs the rest of the way.

If these two teams meet in the play-off – and it is very probable that they will – it should be quite a game!

*Arrivals and Departures***WELCOME TO BNL**

COSMOTRON		
Theodore Carides	Ext. 2113	
MECHANICAL ENGINEERING		
Hank C.H. Hsieh	7773	
NUCLEAR ENGINEERING		
Leila G. Joiner	439	
Sophie O. Moore	453	
PERSONNEL		
M. Evonne Hammond	2513	
PHYSICS		
Jean Yoccoz	2837	
SYSTEMS & PROCEDURES		
Shelby C. Jessup	2390	

RECENT DEPARTURES

DIRECTOR'S OFFICE	
I. Marilyn Buker	
PHYSICS	
Jovan V. Jovanovic	
John R. Townsend	
REACTOR	
George R. Smidt	

SOLUTION TO CHESS PROBLEM

1. ... 1. N-R7
And Black wins in the exchange, plus a Pawn, because:
2. KxN 2. QxP Check leads to Mate.

BOWLING LEAGUE STANDINGS**4-1-64**

PLACE	TEAM	WON
RED LEAGUE		
1	HP Ins	63
2	Cosmos	61
3	Spitfires	57
4	Scotches	54
5	Dirty Sox	51
6	Ghotiz	48
7	HP Outs	43
8	Biology	39
9	Mecca	39
10	Twisters	36
11	Ah Sos	31
12	Goforbrokes	24

BLUE LEAGUE		
1	Woodbees	64
2	Nuclides	52
3	Rainmakers	52
4	Spoilers	51
5	Techs	45
6	Screwballs	44
7	Bubble Boys	42
8	Sleepers	40
9	Pinheads	39
10	Needlers	38
11	Splitters	37
12	E.A.O. Floorwalkers	33

PURPLE LEAGUE		
1	Blue Jays	63
2	Bowl Aids	60
3	Hopefuls	52
4	Designers	50
5	Floorwalkers	37
6	Phoubars	34
7	Woodbutchers	34
8	Fiscal	32

GREEN LEAGUE		
1	Fire Department	58
2	Old Timers I	48
3	Blackbirds	45
4	Old Timers II	45
5	Gnats	39
6	Old Timers III	38
7	Electrons	37
8	Reefers	34
9	Rems	20

ROSE LEAGUE		
1	Medigals	58
2	Nightingales	48
3	Bloopers	43
4	Leftovers	41
5	All Fours	35
6	Bowlerettes	27

CAFETERIA SPECIAL**THURSDAY, APRIL 9**

Small Juice
Tossed Salad
Chicken Cacciatore with Rice
Peas
Shortcake
Beverage
\$.99

TABLE TENNIS

Our doubles elimination table tennis tournament has whittled the field of contenders down to two teams who will meet in the **FINALS, WEDNESDAY, APRIL 15, 12:00 NOON** in the Gymnasium.

D. Cox and J. Smith, who recently defeated A. Christoffersen and G. Tiller, will take on A. Kevey and S. Garrett in a five-out-of-nine-game match for the doubles championship. Kevey took second place in last season's singles event.

The **SINGLES FINALS, THURSDAY, APRIL 16, 12:00 NOON** in the Gymnasium, should result in an exciting climax to this, the most competitive tourney we've had in some time. Sid Heller, defending champion, found the road to the semi-finals difficult, as he was extended in victory by his last two opponents. H. Marshall took two games from Heller before going down (21-19, 21-15, 21-18, 11-2, 18-21, 21-16). K. Fuchel also managed to win two games before dropping the match (21-15, 21-12, 18-21, 17-21, 21-14). Heller is scheduled to play his semi-finals match this week against N. Hien, who defeated R. Hambley (21-10, 21-16) and G. Rabinowitz (21-16, 21-18, 21-13).

In the other bracket, J. Smith, past champion and runner-up in this event, has swept past his opponents without giving up a game. His latest victim was F. Fanale (21-16, 21-17, 21-15). Smith is now scheduled to take on D. Cox, who's billed as the tourney's dark horse. His latest victory came at the expense of Kevey, who went down in four straight (21-6, 21-11, 21-19, 21-15).

Watch next week's **BULLETIN BOARD** for the names of the finalists.

HELP WANTED! For both matches, we need a few volunteers to help with the scoring and officiating. If you'd like to give us a hand, call George Sabine, Ext. 391.

AROUND THE BASE PADSby: **Bob Carciello**

There's still a chill in the air, and it's hard to believe that in just three and a half weeks the 1964 softball season will get underway.

Team entries are due on or before April 17. Two of last year's teams have dropped out of competition; however, one new team has been added to the roster. It looks as though at least seventeen teams will participate in the action this coming season.

There is time left to organize and enter a new team. Stop off at the Recreation Office and pick up an entry blank. But don't delay – April 17 is just around the corner!

CLASSIFIED ADS**FOR SALE**

1957 FORD - 2-dr. sedan. W/w's, r&h, auto trans., good tires, 44,000 original miles. Frank, Ext. 445 or GR 5-1475 after 6 p.m.

1952 CHRYSLER - 4-dr., 6 cyl., fluid drive. 4 new tires, new generator and voltage reg. In good cond. \$150. Ext. 541.

1956 CHEVROLET - 4-dr. hardtop. V8 engine, r&h, 4 new tires. \$350. Ext. 660 or YA 4-3842 evenings.

1957 DODGE - 2-dr. hardtop, V8 engine, power steering, 5 near new and 2 snow tires, r&h. \$450. P. Lieberman, Ext. 7732.

1963 CHEVY II - 4-dr. sedan, auto. trans., r&h. R.W. Briggs, Ext. 384 or 281-5471.

1960 RAMBLER - Wagon. 6 cyl. stand shift. 4 new tires. \$550. R. Luccioni, Ext. 577 or SE 2-3762.

1957 RAMBLER - 4 dr. Overdrive, reclining seats, r&h, back-up lights, good tires. Body and engine very good. \$400. C. Hedberg, Ext. 2677 or 288-3138.

1962 VOLKSWAGEN - Sedan. Excellent cond. Very, very clean. \$1100. Ext. 432.

1962 CHEVY II - Sport Coupe deluxe. Fully equipped, bucket seats, padded dash, new tires, like new. Steve, Ext. 7756 or AN 6-6198 after 6 p.m.

1956 CHEVROLET - 4-dr., 6 cyl., stand. shift, very good cond., almost new tires. \$250. JU 8-7145.

1958 FORD - Country sedan. 9 pass., with Thunderbird engine, standard shift, needs paint job but guaranteed for next 25,000 miles. \$450. Ext. 2509.

1957 MERCURY - Conv. Late model, power steering and brakes. \$250. Ext. 2684 or AT 6-0691.

1963 VOLVO - 122S, 4-dr. sedan. White with red interior, excellent cond., like new 14,500 miles, w/w's, bucket seats, seat belts, 4 cyl., 26 mpg. C. Constantinides, Ext. 2873 or 2763 after 5:30 p.m.

1952 ENGLISH FORD - Consul, running, good transportation. \$50. Wes, Ext. 322 or HR 2-1289 evenings.

1961 CORVAIR - Station Wagon. 4-dr., auto trans., r&h, asking \$750. H. Vanderloef, Ext. 2170; after 5:30 p.m., AT 6-0004.

1957 MERCURY - Late model. Power brakes and steering. Excellent motor and body with 4 new tires. Asking \$495. AN 5-7492 after 6 p.m.

1960 MGA - Roadster. White with black interior. Tonneau cover, w/w's, seat belts, r&h, extras. Under 30,000 miles. Very clean. \$1100. R. Meyer, Ext. 481 or LT 9-5757.

1952 CHEVROLET - ½ ton pickup truck. 4-brand new tires, new battery, 2 spares, r&h, new valve job, new brakes. \$350. R. Meyer, Ext. 481 or LT 9-5757.

1962 OLDSMOBILE - Dynamic 88. 2-dr. hardtop, white, w/w's, automatic. Clean car. Sacrifice \$1750. AT 6-9522 after 6 p.m.

1962 MERCURY - Colony Park, 9 pass. wagon. Auto. trans., power steering, r&h, padded dash, luggage rack. Excellent cond. Ext. 2709.

THE BROOKHAVEN DIVERS' CLUB, IN COOPERATION WITH BERA,**PRESENTS****"'INNER SPACE,' ANSWER TO POPULATION EXPLOSION?"**

Captain Cousteau and Owen Lee on board the Calypso.

Located on our doorstep, yet almost as unknown as outer space, inner space – the sea – may yet prove to be the answer to the population explosion. This is the theory of Owen Lee, author and underwater explorer, who is here to complete arrangements for a showing of the official color films of Captain Jacques-Yves Cousteau's daring underseas expeditions.

Theoretically, the sea contains enough mineral wealth, food, water and power to supply man's needs for centuries. Cultivating underwater farms and ranches which use trained porpoises as cowboy counterparts and controlling the climate via the sea are other possibilities that Lee foresees in man's future.

Pointing to the nine million skin divers throughout the world, Lee cites the face mask and aqua-lung, invented by his boss Captain Cousteau, as having already done much to increase our knowledge of the ocean floor.

Lee promises to expound more on these revolutionary theories when he presents and narrates the official color films of Captain Cousteau's Calypso oceanographic expeditions on Friday, April 17, at the Laboratory. Beginning with native pearl fishermen, the original skin divers, Lee will trace the history of man beneath the sea to the present-day aqua-lungers and the spectacular new Deep Diving Saucer that take two men to a depth of 1,000 feet. Exploring the beautiful coral reefs of the Red Sea with underwater electric motor scooters and capturing live fish and porpoises for Cousteau's marine museum in Monaco are also featured.

Lee, author of "The Complete Illustrated Guide to Snorkel and Deep Diving" and the only American on Cousteau's staff, will present the film at 8:00 p.m. in the Lecture Hall on Brookhaven Avenue. One of his own films, "The Treasure Divers of Vigo Bay," will also be presented in color as a special added attraction. Tickets at \$1.00 each will be sold at the door only. Get there early, as a sell-out crowd is expected and tickets will be on a first come, first served basis. Remember the date – April 17 – Lecture Hall, 8:00 p.m.

1958 BUICK - Special. V-8, 4-dr. sedan. Auto trans., power brakes and steering. Good cond. Kathy, Ext. 613 or HR 2-0436.

1963 MOTORCYCLE - Triumph T100SC. \$825. H. Peter, Ext. 2852 or HR 3-1364.

HOUSE - North Bellport, 3-bedroom ranch, attached garage, basement, partially finished playroom, cyclone fence, landscaped; walking distance to school, stores, and transportation. Carrying charges \$82.55 monthly. Price \$9,500. AT 6-8205.

HOUSE - E. Islip opposite Heckscher Park. Brick and shingle split with 3 bedrooms, 22' recreation room, den, laundry room, 18' kitchen, large patio. Storms and screens, w/w carpeting. Fenced in yard on 1/2 acre fully landscaped lot. \$21,000. Ext. 622 or 581-2877 after 5 p.m.

HOUSE - Patchogue area. 7 rooms and bath, 2-car garage, full cellar, hot water heat. \$500 down, no closing fees, and G.I. mortgage approved. 878-0743 after 6 p.m.

HOUSE - Port Jefferson (Harbor Hills). 4 bedrooms, 2 1/2 baths, built-in kitchen, storms and screens. Private beach rights. Near school. Trees and shrubs. \$22,900. Ext. 2449 or HR 3-2281.

HOUSE - N. Brentwood area. Six room ranch, with attached garage. Storms and screens, two patios, gas fired hot water heat, fenced corner plot 96' x 100' 1/4 mile from L.I. Expressway exit. P. Ettari, 2407 or BR 3-6436.

HOUSE - Private community in East Patchogue, 3-bedroom redwood siding ranch, oil baseboard hot water heat, fireplace L.R., w/w carpet and wood paneling. Beautiful 1/4 acre landscaped lot with garage, unattached covered patio with fireplace and rock garden, \$16,900. Call for appointment Paul Kelly GR 5-3516. (Taxes low)

1957 OWENS - Sport cruiser. 19 1/2 ft., 100 h.p. inboard, 2 bunks, head, complete with anchor, life preservers. \$1350. Chris, Ext. 2243 or JU 5-8140 after 6 p.m.

CRUISER - 18 ft. hardtop, with 40 h.p. Scott, all electric. Fully equipped. \$750. GR 5-3494.

CRUISER - 1962 Chris Craft Constellation. 29'. Sleeps 4 - 2 bunks, convertible dinette. Full canvas, fully equipped, galley, head. One owner. HR 2-1759.

CRUISER - 26' A.N.A. hardtop. 3 years old, mahogany planked and copper fastened. 185 hp interceptor, 85 hrs. Fresh water cooled. S/s bow rail; fiber-glass fish well, compass. Excellent cond. Ext. 339 or JA 2-3263.

RUNABOUT - 1961 Elgin 14' fiberglass runabout. Electric starting Elgin motor; trailer, battery, new windshield, paddles incl. Owner leaving Lab. must sell. \$550. Nimmo, Ext. 2348 or GR 5-8556.

CRUISER - Chriscraft 24' 1957 model, 105 hp, 2 bunks, closed head; fast, excell. cond. 149 hours. \$3,000. E. Tank, Ext. 2389 or 878-1572.

WASHING MACHINE - Moritor 5 lb. portable, handwringer. Ideal for small apartment. \$25. Also, wheel rims 15", 2 for \$3. Hank, Ext. 456 or 878-1917.

SLIDE PROJECTOR - Argus 500 automatic, for 2x2" slides, little used, new lamp. \$35. Also, Silex steam and dry iron, 1/2 year use, \$5. GE heating pad, seldom used, \$5. Table radio, Kent, AM-FM, \$20. Car radio, Motorola "500" \$10. Alarm clock, GE, \$3. Ext. 2774.

TIRE RIMS - For Falcon, 13", one has good snow tire mounted on it, and the other a regular tire. \$3.50 each; both for \$6. R. Meyer, Ext. 481 or LT 9-5757.

LAWN MOWER - Sears self-propelled reel-type. Used approximately 6 times. Yours for \$50. F. Barnes, Ext. 488.

SCUBA EQUIPMENT - Wet suit "Vogt" 3/16" neoprene, nylon lined. Jacket, pants, hood, boots. Medium size, used very little. \$30. Also,

finns, Healthways, Cressi-Gribaldi, yellow floaters, size 9-11, used very little. \$6. Ext. 301-12 or 281-5852 after 8 p.m.

RECEIVER - 2 meter. Hallicrafter radio - all band. 6 meter convertor and a 2 meter convertor. B. Howard, Ext. 2314.

RUNABOUT - 16' Dargle molded plywood, with 30 h.p. Johnson electric starting engine. Navy top, cushions, etc. \$425. Ext. 451.

TRAILER - 18 ft. Traveleze travel trailer, fully equipped, sleeps 5. \$1100. Joe Davis, Ext. 2712.

TRACTOR - Riding type for large garden. 9 h.p. Briggs & Stratton engine, electric starting. Includes 10" plow with coulter, 48" blade for pushing snow or fill, etc. 40" disc, 32" rotary mower and 26" reel mower. Mazzeo, Ext. 2829 or 878-1923.

ELECTRIC RANGE - 40" double oven, Hot-point, white with 4 burners, one for deep well. \$35. Ext. 597 or AT 6-0436.

TIRES - 670x15 with excellent tread, mounted on Ford wheels. Have 4, will sell singly or otherwise. M. Strongson, Ext. 2926.

RUG - Nylon, 10x14', in good condition. \$25. Ext. 345 or YA 4-6971 after 6 p.m.

DIVING OUTFIT - U.S. divers wet suit, regulator, tank, plus weight belt, gauge, and spear gun - all like new. \$125. complete set. EM 3-9513 after 6 p.m.

STOCK CAR - 301 Chevy. \$350 or best offer. 281-7665.

RECEIVER - Short wave and broadcast receiver. Knight kit space spanner, assembled, in good working order. Complete with antenna. \$12.50. Ext. 636.

AIR CONDITIONER - 3/4 ton Westinghouse window model. Used five years, very quiet. 110 volts. \$30. R. Hellens, Ext. 439 or 2741.

FURNITURE - Maple diningroom set - 7 pcs. \$30. 281-5756.

PROPERTY - Heavily wooded building lot. 3/8 acre at the "Tides on the Sound" in Rocky Pt. Custom homes only in this area. Paved road with curb and utilities. 5 min. walk to beach. \$5000. Mike, Ext. 2718 or 2830.

FISH TANKS - 4-ten gal. capacity and 2 five gal. capacity. Also stands, lights, pump, and filters. 878-0373.

BUNK BEDS - Twin size, maple finish. Complete, can be used separately. In good cond. \$20. Clarence, Ext. 567 or LT 9-4538 after 6 p.m.

TRUNK - Steamer wardrobe type. 40x23x22 in. \$15. Fischer, Ext. 542 or AT 9-0646.

CAMERA - Leica 111C with speeds one to 1/1000 seconds including "Bulb" and "Time." Summar 50mm, F:2 lens, flash, two cases, exposure meter with super-sensitive element, Imairet finder and 400 page Leica Manual. Best offer over \$200. AT 6-9659.

HAIR DRYER - G.E. Model 2HD, brand new in white pillbox carrying case. Original price \$29.95. Will sell for \$20 (never used). Milton Gustavson Ext. 2257.

TV SET - and girl's bicycle and sled. Package deal \$25. F. Klein Ext. 2432 or 7729.

RECORD PLAYER - Garrard TMKII 4 speed manual player with Electro-Voice EV-21D stereo ceramic cartridge with diamond stylus. 4 pole motor, automatic start and stop. In

mahogany base and mounting board, with extra plug-in head. Call Ext. 2631.

TENNIS RAQUET - Woman's Wilson pro model, 4 3/8" handle, medium, nylon strings. Call Ext. 2270.

WANTED

HOME - For 7-month old beagle pup, a real cutie. Wish we could take her with us when we move. Prefer seeing her get a home with love than destroyed. Please call 281-5678.

HOUSE - For long-term rental. A nice 3 bedroom house on the North Shore or in Bellport. Preferable furnished. Must enter before July 1. Ext. 2948.

WASHING MACHINE - Maytag, older type, not auto. Ext. 2387 or AT 6-8712 after 6 p.m.

C.B. TRANSCEIVER - 6 volt, 12 volt, or A.C. power. Ext. 2387 or AT 6-8712 after 6 p.m.

PRESOLITE OUTFIT - Used, including torch, hose, regulator, and tank. Livant, Ext. 2168.

TOOLS - Wood carving tools. E. Miller, Ext. 2381, 2382, or HR 2-1646.

A SWAP - My 1958 Ford 9 passenger station wagon for your 1958 or 1959 Volkswagen. Ext. 2509.

TYPING JOBS - Secretary available for stenography and typing at home. IBM machine. Please phone evenings. H. Williams, GR 5-5094.

FLUTE - Open hole French flute. D. Gurinsky, Ext. 349 or 555 or 878-1013 after 6 p.m.

FOR RENT

STUDIO APARTMENT - Large living room-bedroom, kitchen, bath. Furnished, utilities incl. Secluded location. June 15 through September 15 - \$400. AT 6-0682 after 6 p.m.

HOUSE - North Patchogue, completely furnished. 3 bedrooms, kitchen, dinette, etc. and 2 full baths. Large backyard, garage, washing machine, dryer. Avail. August 16, 1964 to June 30, 1965. GR 5-4038 after 6 p.m.

APARTMENT - Bayport, furnished. 4 rooms. \$115. mo. includes all utilities. HR 2-0753 after 5:30 p.m.

HOUSE - Shirley. 3 bedrooms, on 1/2 acre fenced property. McKeever, FO 8-1278.

FOUND

KEYS - Three on chain with charge plate.

Personnel Services, 3 Center Street

CARPOOLS

DRIVER - Wanted for reliable on time existing carpool. Exit 32 So. State Parkway, Rt. 110 Amityville. Frank Enright Ext. 2120.

WANTED - Rider for 2 man carpool from Selden, Beachwood City Holliday Park area. Merkert, Ext. 2639.

RIDER - Would like to join pool from Connetquot Ave., Central Islip. Shelby Jessup, Ext. 2340.

DRIVER - Wanted to complete carpool from Huntington. Call I. Feigenbaum, Ext. 2207 or H. Susskind, Ext. 2270.