

# the Bulletin Board

VOLUME 17, NUMBER 32

Published by the BNL Personnel Office

MAY 5, 1964

## TWISTERS — DIAMONDS ARE CHAMPS!

Last Friday evening at the Patchogue Recreation bowling alleys, the final matches of the BNL bowling season were rolled to determine the all men's and all women's championships.

The Rose League winners, the Bloopers, went into their contest against the Pink League victors, the Diamonds, as slight underdogs because of their lower averages. When they lost the first four-game match, it looked as if the predictions were accurate. But the Bloopers rallied to take the second and third games, and, going into the final game, they led the Diamonds by two games to one and thirty-three pins. The Diamonds, not bowling their averages, finally came alive as anchor-lady Lois Bartos put forth her best effort, a 210 game, to take the game, match and title, "Champion BNL Ladies Leagues."

On the adjoining alleys, the Twisters came from behind, after losing their first game to the Phoubars, to slaughter the Fire Department and the Woodbees in their second and third games. Not only did they win these games, but also accumulated a great number of Petersen Points by virtue of their high wood totals.

In the final game, the Twisters took on the Woodbees, who had won two games, but narrowly. If they stayed close in the wood department, the Twisters could afford to lose the game and still take the championship. That's exactly what happened; champions by a mere two pins!

While all of this was going on, the Phoubars were making their last bid for the honors. They were led by Captain Frank Walsh, who threw eight strikes in a row, resulting in a tremendous 268 game. But his teammates couldn't supply the extra fifty pins needed to overtake the leaders, and his team fell short by one Petersen Point.

### FINAL RESULTS

Ladies	Petersen Pts.	Total Wood
Diamonds	65	3069
Bloopers	63	2973
<b>Men</b>		
Twisters	83 (+18 pins)	3968
Woodbees	83 (+16 pins)	3866
Phoubars	82 (+19 pins)	3919
Fire Dept.	79 (+36 pins)	3866

## MAY 8 IS BOWLING AWARDS AND PRESENTATION NIGHT

Beginning promptly at 8:30 p.m. on Friday, May 8, the prize committee will draw a number and present the winner a prize. This door prize is just the beginning of a terrific evening: The Bowling Awards and Presentation Night. Free food and beverages (beer, soda, ginger ale, etc.), free chips, free pretzels, free dancing — everything for this event will be presented free. The refreshment committee will have on hand one bottle of cheer for each team captain to divvy up.

The gymnasium will be decorated and highlighted with the colors of red, white and gold to carry out the theme of the evening — A Night at Camelot. On hand will be Sire Jerry Van and his three Squires to provide the dancing music.

Presentation of awards and trophies will begin at 8:45 p.m. The awards will be made by Dr. G. Norris Glasoe and Mr. Joseph S. Washburne, assisted by George Sabine. Dancing will begin at 9:30 p.m., immediately following the presentations.

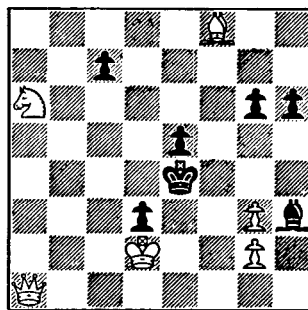
Our prize committee has promised to keep everyone on his toes by pulling several door prizes during the night. The main prize will go at midnight. In addition, there will be awards for the best-decorated tables.

Do come early, and plan to stay with us until 2:00 a.m. Saturday morning. Your committee has worked very hard — and for just one reason — that you might have an excellent time. The committee, by the way, consists of: Lloyd O'Laughlin (Chairman), Thomas Lee, Ed Walsh, Arden Neber, Pat Cooper, Marie Follenius, Carol Rozanski, Jere Austin, Belmont Sylvester, Dan Stelmaschuk, Sandy Earle, Al Nicholson and Len Emma. The group, with valuable assistance from other bowling league members and George Sabine, will endeavor to make this evening one you will long remember.

TABLE RESERVATIONS — Beginning Wednesday, May 6, team members may stop by the gym to reserve and decorate their tables.

## CHESS PROBLEM

This week, we have a mate-in-three problem. It is White's move and win. There are many ways of mating, but not in less than three.



## DIVERS' CLUB MEETING ON MAY 11

There will be a meeting of the Brookhaven Divers' Club on Monday, May 11, at 8:30 p.m. in the Recreation Building on York Lane. Plans will be made for a dive in the near future. All persons interested in joining the Club are urged to attend this meeting. Remember the date: Monday, May 11.

## TIAA — CREF

Participants in the Laboratory Retirement Plan may elect to have all premiums applied to TIAA, the fixed annuity, or may elect to have a percentage of premiums applied to TIAA and the remainder (up to 50%) to CREF, the variable annuity.

These percentages may be changed once a year, effective July 1. All participants who wish to change current percentages must make application at the Personnel Office **prior to June 1, 1964.**

## EXPECTANT PARENTS CLASSES

A series of expectant parents classes is scheduled to begin on Thursday, May 7, at the Suffolk County Community College. The eight sessions of the course, which will feature discussions, demonstrations and films, will be held at 8:00 p.m. in the Ross Building, College Road, Selden.

There is no charge for the classes, and registration is open to all expectant parents. For more information, contact Mrs. Sheridan, SE 2-3949.

## BRIDGE NOTES

There will be a duplicate bridge game on Thursday, May 7, at 8:00 p.m. **sharp** in the Recreation Hall. Admission is **\$ .75**, and all are invited.

The winners of the last game were Drs. Schwarz and Allen of the Chemistry Department.

The following hand, played at a recent laboratory duplicate match, is an interesting example of how even the most seasoned players sometimes get bamboozled by the unorthodox play of their opponents:

**N** (L. LAWRENCE)

S AKx

H 10, 9x

D K8x

C AQxx

**W** (MRS. DVORAK)

S Jx

H Jxx

D J, 10xx

C Jxxx

**E** (B. DVORAK)

S Q, 10xxx

H xx

D Ax

C Kxxx

**S** (S. WAGNER)

S xxx

H AKQxx

D Q, 9xx

C x

The contract was 4H by South; West led the diamond 10.

The unorthodox lead of the diamond 10 caused Wagner to go wrong from the beginning. Thinking that the diamond jack was at his right (the lead of the 10 denies the jack), he played the king from the dummy. Dvorak took the ace and returned a diamond. Declarer, still under his misconception, played small, planning to win the trick with dummy's 8. But Mrs. Dvorak won the jack (!) and led back a diamond for her partner to ruff. A spade return was won in dummy, and declarer, visibly shaken, stopped to plan the rest of the hand. He felt that his best chance was to set up a ruff for his losing spade. So he played another high spade, two rounds of trump and the diamond queen, pitching dummy's last spade. He now tried to ruff the last spade in his hand with dummy's last heart, but the wily Mrs. Dvorak trumped with her jack! Down one on an absolutely cold hand! (It was cold comfort for declarer to note that the club finesse would have failed also.)

## SOFTBALL FIELDS

The softball diamonds on Brookhaven Avenue, Princeton Avenue, and Upton Road are to be used for scheduled league games and for scheduled practice games. The field reservation schedule is maintained at the Recreation Office, 3 Center Street.

## PERSONNEL SERVICES

**Recreation Office — 3 Center Street**

**Daily 9:00 a.m. — 1:00 p.m.**

### TENNIS RACKETS

A stock of rackets is now on hand for resale at a discount.

### METS TICKETS

Seats are still available for the following dates: May 12, Milwaukee; June 2, Houston; June 9 and 10, Chicago; June 21, Philadelphia; June 23, Pittsburgh. We also have some choice dates still open for July, August and September games.

### DISCOUNT TICKETS

Discount coupons good through May 13, are available for "Mary, Mary" playing at the Helen Hayes Theatre in New York City.

## ATTENTION ALL ARCHERS!

Now is the time to come out and join the Nimrods Archery Club. All archers are welcome, whether they are beginners or experienced, and members of the Club will be available to give instructions to anyone who might want them. The regular meeting night is Wednesday at 5:00 p.m. at the outdoor archery range. The range can be found by crossing the railroad tracks on Brookhaven Avenue and making a right turn on Fifth Street. We look forward to seeing you on Wednesday!

## CHORISTERS ATTENTION

A small enthusiastic nucleus of song lovers has met in the interest of forming a choral group. Current plans indicate that variety will be the keynote in the selection of music. The time is Wednesday evenings at 5:15 p.m. by the grand piano in the Brookhaven Center. The welcome mat is out for all who are interested. For further information, call Lois Jones, Ext. 2200, or Dick Miller, Ext. 686.

## THIRTY-SIXTH BROOKHAVEN LECTURE

**By: William B. Fowler**

Physics Department

**Title:**

**Bubble Chambers: Instruments for  
High Energy Physics Experiments**

**Lecture Hall — Wed., May 6 — 8:00 p.m.**

A buffet supper (\$2.75) will be served at the Brookhaven Center before the lecture, beginning at 6:00 p.m. Reservations should be made at least one day in advance by calling Ext. 2302 before 5:00 p.m. or Ext. 2453 in the evenings.

Refreshments will be available in the Exhibit Hall lobby following the lecture.

## Arrivals and Departures

### WELCOME to BNL

AGS	
William R. Frisken	Ext. 2982
BIOLOGY	
Marvin R. Alvarez	388
Om K. Ghei	359
Anne D. Gounaris	386
CENTRAL SHOPS	
Merrill V. Hughes	566
NUCLEAR ENGINEERING	
David K. McGuire	7753
PHYSICS	
Lance R. Persson	
PLANT MAINTENANCE	
Francis A. Gomer	2389
Helen Plisko	2105
PURCHASING	
Sylvia Murray	
SUPPLY & MATERIEL	
Frank L. DeRosa	

### RECENT DEPARTURES

INSTRUMENTATION & HEALTH PHYSICS	
Luis Tepper	
MEDICAL	
Maria S. Weynand	
PHYSICS	
Robert W. Bekuhrs	
Elizabeth Medd	
PURCHASING	
Catherine A. Mott	

## SUMMER BOWLING MIXED LEAGUE

Entry blanks are now available at the Recreation Office, 3 Center Street, for those wishing to join our summer mixed bowling leagues.

It is planned to start the season the week of June 1, if enough team entries are forthcoming. Teams will consist of four regular bowlers and it is recommended that each team have two substitutes. Each bowler must be a B.N.L. employee or the spouse of an employee.

The league will be handicapped so that newcomers can join the fun. The season will run fourteen weeks and end the week of August 31. The entry fee has been set at \$2.50 per bowler. Trophies will be awarded for first place and individual highs. Last season's league bowled at Port Jefferson on Tuesday evenings at 6:30 p.m. However, the entry blank offers a selection of your preference for night and bowling alley. If necessary, a meeting of team captains will be called to determine the time and place.

Entry blanks, accompanied by the proper fees, must be submitted by May 22.

## CAFETERIA SPECIAL

Small Juice  
Tossed Salad  
Celery & Olives  
Corned Beef & Cabbage  
Boiled Potato  
Shortcake  
Nuts & Mints  
Beverage  
**\$.99**

## SOLUTION TO CHESS

The key is 1. Q-Q1 which threatens 2. Q-B3 Check and 3. QxP Mate. Or 1... BxP 2. Q-N4 Check and 3. N-N4 Mate. Or 1... K-Q4 2. Q-N3 Check, K-B3 3. N-N8 Mate. Or 1... K-B4 2. Q-B3 Check, K-K3 3. N-B5 Mate. Or 1... K-Q5 2. Q-N3 (threat: 3 QxP Mate), P-K5 3. B-N7 Mate.

## BULLETIN BOARD CLASSIFIED AD POLICY

1. Employees only may place ads in THE BULLETIN BOARD.
2. **All items advertised for sale must be property of an employee.**
3. Real estate ads **will be accepted only when they involve change of residence by an employee, and are accompanied by a statement of ownership and change of residence.**
4. No ads for business purposes will be accepted.
5. **Ads must be submitted in writing** (preferably typed) **by 3 p.m. Friday** for inclusion in the next week's newspaper. Address the ads to THE BULLETIN BOARD, 58 Brookhaven Avenue, or deliver them to the Personnel Office. Ads must contain a signature and Laboratory telephone extension. If you do not want your name to appear when the ad is printed, put it in parentheses.
6. Ads are run on a space available basis. If your ad does not appear due to space reasons, it will be held for inclusion in the next issue of THE BULLETIN BOARD.
7. If you wish to repeat an ad, it must be resubmitted.

## CLASSIFIED ADS

### FOR SALE

1940 FORD - 1/2 ton pickup with 1953 Mercury engine, new clutch, battery, rebuilt transmission, good tires, good cond. Asking \$300. HR 3-1658 after 5:30.

1954 FORD - Station wagon. AT 6-8712 after 6:00.

1957 T-BIRD - Two tops and tonneau cover, r/h, Fordomatic, good condition. Best offer over \$1000. E. Raka, Ext. 310.

1953 WILLYS - 4-dr. sedan. Running. \$15. Ext. 2874 or AT 6-1145.

1962 CHEVROLET - Impala convertible, r/h, w/w's, V-8 engine, standard transmission, excellent condition. \$1,850. R. Thompson, Ext. 2384 or GR 5-4992.

1962 HAWK - "Gran Turisimo" 4 speed, synchromesh transmission, positraction, bucket seats, white with red interior, excellent cond. Ext. 2866.

1957 PONTIAC - 2-dr. hard top, auto. trans., r/h. Asking \$350. Ext. 451.

1959 FORD - Galaxie, 4-dr. sedan, power steering, auto. trans., r/h, very clean. \$795. AN 5-1931.

1956 FORD - Station wagon, Thunderbird engine, excellent mechanical condition, new battery, good tires. \$295. E. Schairer, Ext. 388 or AT 6-1024.

1963 CHEVY II - 6 cyl., stand. trans., r/h, good economy. \$1,450. J. Fontana, Ext. 624 or SH 4-2821.

1961 MERCURY - Meteor, 2-dr., 8 cyl., auto. trans., r/h. Jake, Ext. 2211.

1957 OLDSMOBILE - Original owner, fully equipped, rubber like new. \$375. SH 4-2821.

1957 FORD - Station wagon, V-8, Fordomatic, r/h, good tires. \$495. YA 4-3522 after 5:30.

1957 FORD - Convertible, black & white, 6 cyl., good tires, very good running cond. Asking \$375. See to appreciate. Ext. 639 or SE 2-3338.

1953 CADILLAC - 4 dr. sedan, auto. trans., p/s, r&h. Body clean, motor good, recently repainted. \$225. Ray, Ext. 2196 after 5 p.m. or 878-1975 before 5 p.m.

1958 PONTIAC - Chieftain, 2 door hardtop conv., V-8, auto. trans., r&h, motor sound. Ext. 2196 or GR 5-5394.

1963 OLDSMOBILE - Conv., r/h, power steering and brakes, low mileage, perfect cond. \$2,700. L. Mingino, Ext. 2296.

1957 MERCURY - Late model power brakes & steering. Excellent motor and body with 4 new tires. \$495. AN 5-7492 after 6 p.m. Must sell.

1954 CHEVROLET - Bel Air, 6 cyl., 2-dr., auto. trans., r/h, runs well. \$100. Ext. 322.

1956 T-BIRD - 1963 Ford synchromesh 3-speed trans., "390" clutch assembly & bell housing, completely resuspended. 430 cu. in. 1960 Lincoln eng. completely rebuilt. Completely instrumented, reupholstered, etc. 4 new 7.10-15 (3000 miles) Atlas Bucrons. Car orig. cost \$1300, over \$2500 above this invested. Never raced. Immaculate. \$1,800. Pat, Ext. 2198.

1957 DODGE - Hardtop, V-8, 5 new plus 2 snow tires, low mileage, r/h, p/s. \$450. P. Lieberman, Ext. 7732.

1958 NASH - Metropolitan. 878-0071 after 6.

1964 BUICK - Special, 2-dr., std. shift, V-6, 155 hp, w/w, r/h, back-up lights, remote side view mirror, 9000 miles. Asking \$2,050. F. Dimino, Ext. 2410 or HR 3-5304.

1955 CADILLAC - 2-tone green, excellent condition. \$400. J. Costanzo, Ext. 548 or AT 9-0876.

1952 CHEVROLET - 4-dr. sedan, 6 cyl., std. shift. Good transportation, presentable ap-

pearance, best offer. E. Reilly, Ext. 434 or AT 6-1192.

1957 PONTIAC - 9-passenger wagon. Excellent cond., low mileage. \$350. Ext. 344 or AN 5-7726.

CABIN CRUISER - 28 foot 1962 Pembroke. Used 1 season, completely equipped. 185 hp Chrysler engine. Will sacrifice for quick sale. S. Pollis, Ext. 2677 or GR 5-0916 after 5:30.

BOAT & MOTOR - 12 foot runabout. Completely fibre glassed plywood hull. 14 hp Evinrude. Asking \$150. Mac, Ext. 439 or 281-9559 after 5:30.

1958 OWENS - 31 foot twin screw, 440 hp, 95 hours. Sleeps 6. 878-2517 after 5:30.

SAILBOAT - 8 foot in very good condition. Ext. 2912 or HR 2-0982.

SAILBOAT - Bulls-eye fiberglass 16 foot keel sailboat with dacron mainsail, jib and jenny. Excellent condition. \$1,475 firm. Ext. 2876.

OUTBOARD MOTOR - Evinrude, 36 hp. Runs and looks like new. Two props and 6-gallon gas tank included. Tut, Ext. 2255.

1956 CRESTMARK CRUISER - 23 foot hardtop with full canvas. Sleeps two. Head & galley. 95 hp Chrysler Ace. In water, ready to go. \$2,000. 878-1484.

DINGHY - Plywood, 6 foot, with oars. Fine condition. \$25. JU 5-8322.

NOVA SCOTIA FISHING BOAT - 1950, 38 ft., 12 ft. beam, head and sink, 55 Dodge engine conversion. \$2,400. Ext. 2285 or AT 9-1003.

CRUISER - 21 foot inboard, 1958, hardtop with full canvas, sleeps two. Head & galley, 66 hp Gray Marine. Must sell. \$1,200. Gail, Ext. 2340 or SE 2-4031.

RUNABOUT - 14 foot fiberglass bottom boat with 1960 Scott 30 hp engine, manual start, paddles and extras included. Also trailer. Must sell. \$325. Gail, Ext. 2340 or SE 2-4031.

SLOOP - 18 foot centerboard sloop, dacron sails, SS rigging. \$700. LT 9-5741.

BOAT - 17 foot Picnic in parts. Fiberglass hull, deck, etc. Ready to assemble. Bob, Ext. 2485.

1947 TEAL CABIN CRUISER - 24 foot, inboard 100 hp Ford conversion, 2 bunks, head, electric bilge pump, new battery, cushions. \$750. Mac, Ext. 7776 or 2315 or AT 6-0927 after 5.

RUNABOUT - 1959 Fiberglass, 16 ft. 1956 30 hp Evinrude, trailer incl. Very reasonable. Andy, Ext. 323.

1961 PARSONS - 14 foot Fiberglass boat. Electric 40 hp Mercury, navy top incl. Shipmate trailer. Excellent ski boat. Andy, Ext. 323.

HYDRO-PLANE - 8 foot Mini-Most. All seams Fiberglassed, complete with speedometer, steering wheel and cables. Takes 3 to 10 hp outboard. \$80. D. Oakley, Ext. 2158.

SPEEDBOAT - 12 foot, with Fiberglassed bottom. \$40. firm. 281-8253.

SPEEDBOAT - 14 foot Barbour with 1960 18 hp motor and trailer. Complete with accessories for \$500. Ext. 639 or 281-6695 after 7.

1959 ELGIN OUTBOARD MOTOR - 7 1/2 hp, less than 10 hours use, must sell. \$125 includes 6 gallon reserve tank. Tom, Ext. 2971.

CHRIS CRAFT - 35 foot, sleeps 6, dinette, head, 2 145 hp Chris Crafts completely rebuilt

1963. Flying bridge, 2 new stainless steel gas tanks, 1 new monel water tank 1963. Depth finder. AT 6-9390 after 5 or AT 6-0312.

CUSTOM CRUISER - 24 foot, 95 hp Nordberg in good condition, sleeps 2, galley, dinette, complete with canvas. Good boat for fishing. AT 6-9390 after 5 or AT 6-0312.

RUNABOUT - 16 foot yellow jacket runabout, 18 hp Johnson outboard motor, windshield, navy top and accessories. \$350. Keith Thompson, Ext. 2148.

CABIN CRUISER - 21 foot with 60 hp Gray. Sleeps 3 adults plus 2 children. Fresh water sink, head, ice box, new paint, navy top, fuel pump. Extras and accessories. Ext. 2528.

HOUSE - Sayville-Oakdale area 2 blocks south Bianco VW dealer. 2-bedroom ranch, carport, ½ acre wooded, storms and screens, refrigerator. 234-5295.

HOUSE - 9-rm. ranch in Mastic. Living room, dining room, 4 bedrooms, rec. room, utility room, enclosed porch, 2 baths, oversized garage, cellar, fully landscaped, alum. storms and screens. 10 minutes from Lab. \$20,000. 281-9411 after 5 or Ext. 574.

HOUSE - Port Jefferson (Harbor Hills). 4 bedrooms, 2½ baths, built-in kitchen, storms and screens. Private beach rights. Near school. Trees and shrubs. \$22,900. Ext. 2449 or HR 3-2281.

HOUSE - N. Brentwood area. Six room ranch, with attached garage. Storms and screens, two patios, gas fired hot water heat, fenced corner plot 96x100 ft., ¼ mile from L.I. Expressway exit. P. Ettari, 2407 or BR 3-6436.

PROPERTY - Heavily wooded building lot, ¾ acre at Tides on the Sound, Rocky Point. Custom homes only in this area. On cul-de-sac. Road paved with curb. Utilities at curb. 5 minute walk to private beach. Mike, Ext. 2718 or 2830.

HOUSE - Patchogue Village. 6 rooms, screen porch, garage, elec. stove, oil heat, tile bath, kitchen cabinets & walk-in pantry, oak floors, 60x140 plot. GR 5-2829 after 6.

HOUSE - Choice 1-acre location high on secluded court in one of the most desirable sections of Huntington. Winter view of harbor, close to beaches and marina. 4 bedrooms, 3 bath units, paneled family room, paneled dining room, full basement, laundry room, 23' living room, eat-in kitchen, screened porch, 2-car garage. Price in low 30s. HA 7-5733.

HOUSE - Mastic Beach. Cape Cod with 4 bedrooms, kitchen, living room, partial cellar. \$9000. C. Martins, 281-6809.

TV SET - Philco 24 in. model custom 440 "Miss America." Good condition, modern, blond oak console. \$90. Refurnishing home to Early American. GR 5-1232.

SHETLAND SHEEPDOGS - (Miniature Collies) AKC, champion-sired, inoculated, paper-trained, 2 mos., male and female for pet \$65. Female show prospect, \$100. L. Joiner, Ext. 439 or JU 4-7271.

REFRIGERATOR - Admiral, 8 cu. ft. \$25. Ext. 464.

POWER MOWER - Gemco 21 in. reel type, slightly used. Also used 18 in. Scotts spreader. C. Turner, Ext. 7744.

WOOD SCREENS & WINDOWS - Used. 12 storm windows and 7 screens 28x54 plus several miscellaneous sizes. Free for the taking. D. Kassner, Ext. 2659.

REFRIGERATOR - Frigidaire, with top freezer. Very good condition. \$60. Maple kitchen set, table light gray formica top. Chair seats newly covered. \$25. 325-0567.

BABY CARRIAGE - Biltrite, like new. \$15. Lorraine, Ext. 2885.

MISCELLANEOUS - Hedstrom baby carriage, baby stroller, crib, car seat. All in good condition. \$15. Two sets of 3 cushion couch covers, like new. \$5. One pair 760-15 snow tires, \$4. One pair rims for 1956 Chevy, \$4. PA 7-5134.

REFRIGERATOR - Westinghouse, 6 cu. ft. In good condition. \$25. Ext. 2185.

TENNIS RACQUET - Wilson Pro Model, 4½ in. medium handle, nylon strings. Susskind, Ext. 2270.

BICYCLE - 16 in. convertible. Can be used for boys and girls. Has removable bar and training wheels. Excellent condition. \$13. AT 6-8849.

AMPLIFIER - Fisher mono amplifier. Excellent condition. Ext. 2876.

DIVING TANK - U.S. divers wet suit, regulator, tank, plus weight belt, gauge, and spear gun - all like new. \$125. complete set. EM 3-9513 after 6 p.m.

FURNITURE - Imported Danish, oiled teak. Large china cabinet (77x59x16 in.), in excellent condition. Best offer over \$390. Ext. 2908 or GR 5-7447 after 6.

2 TICKETS - Brookhaven Community Concerts Assn., Virginia Symphony Orch., for 3 p.m. of May 10, 1964. \$2.50 each. L. Lax, Ext. 2885.

CHAIN LINK FENCE - 40 ft., 4 ft. high, 5 posts, top rail and fittings, like new. First \$25. takes it. Brems, Ext. 2191.

HUB CAPS - Set of four Cadillac hub caps. Fit 15 in. rims. Very good cond. \$15.00. Ext. 2196 after 5 p.m.

THEATER TICKETS - 2 for "Dylan" on Saturday evening, May 9, 1964. Balcony @ \$5.75. Ext. 659 or 281-6502 after 6.

GO KART - Royal Norseman with wheels, assembled, never used. \$25. C. Boulon, Ext. 618 or AT 6-8631.

ELECTRIC HOT WATER HEATER - 21x25x36 in. high. 30 gal. tank. Excellent condition. Converting to oil heat. C. Quappe, Ext. 351 or AT 6-9385.

NYLON LINE - 37 feet of ¾ inch. Columbia braided line. Excellent for main sheet. Original \$18/ft. Price \$5. E. Raka, Ext. 310.

SNOW TIRES - Six 700x15 tires. Used only 350 miles. Ext. 2319.

#### CAR POOLS

DRIVER - Wishes to join carpool from Bklyn. area (vicinity of Bensonhurst) starting mid June. Ext. 648.

DRIVER - Wanted for existing carpool, Exit 32 So. State Pkwy., Rt. 110, Amityville. F. Enright, Ext. 2124.

RIDE - Wanted from Setauket or Port Jefferson. Billie, Ext. 2409.

DRIVER - Wanted to join existing carpool. Meet in public parking field on Wantagh Ave. near So. State Pkwy. (Wantagh Ave. exit). Leave parking field 7:20 a.m. sharp. A. Laurine, Ext. 448.

DRIVER - Wishes to join or form carpool from vicinity of Islip train station May 18 or later. S. Jones, Ext. 2526 or HR 3-4432.

#### FOR RENT

HOUSE - In North Patchogue, convenient to schools and shopping. Completely furnished, three bedrooms, kitchen, dinette, living room, fireplace, and two full baths. Large backyard, garage, washing machine, dryer. Available Aug. 16, 1964 to June 30, 1965. Phone GR 5-4038 after 6 p.m.

SUMMER BUNGALOW - Completely furnished, 500 feet from Lake Ronkonkoma, use of private beach, living room, kitchen, 2 bedrooms, bath & screened-in porch. Available June 1. JU 8-8618.

HOUSE - Fully furnished 3 bedroom ranch. Fireplace, attached garage, semi-finished playroom in basement. Large grounds in desirable location, Village of Patchogue. J. Hare, Ext. 691.

APARTMENT - Unfurnished in Center Moriches. 3 rooms and bath, \$90 per month, utilities included. 878-1944.

BOAT TRAILER - Can handle anything up to and including 20'. Reasonable rates. GR 5-7275 after 5:30.

HOUSE - Unfurnished hi-ranch in North Heatherwood developed near Port Jefferson. 3 bedrooms, 1½ baths, attached garage, built-in kitchen. Available May 16, 1964. S. Jones, Ext. 2526.

#### WANTED

SANDBOX & WADING POOL - Large enough for two growing girls. M.L. Williamson, Ext. 2812.

UNFURNISHED HOUSE - To rent in Bellport, Brookhaven, Shoreham. Four bedrooms. For scientist visiting Sept. 1964 to Sept. 1965. AT 6-0798 or Ext. 2853.

BED - Single or double folding bed in good condition. Bill, Ext. 2560 or HR 3-5820.

LITTLE LEAGUE WORKER - Anyone living on the North Shore between Wading River and Mt. Sinai who is interested in working with boys 9-12 for the North Shore Little League contact J. Fontana, Ext. 624.

6" TELESCOPE - In good condition. Ext. 351 or HR 3-0178 after 6.

BABY STROLLER & 20" GIRL'S BICYCLE - With training wheels. T. Ludkewycz, Ext. 2200.

GOLF CLUBS & BAG - Need not be full set. J. Mayeski, Ext. 2187.

FURNISHED ROOM - Located within 10 mile radius of Lab beginning around May 20. A rental of about \$50 per month is desired. L. Schatzer, Ext. 2263 Mon. or Fri. PY 8-2688 after 6 on Tues. through Thurs. and Sat. and Sun.

#### FOUND

CAR KEY - On ring. Found outside Bldg. 510.

Personnel Services - 3 Center Street